

DIST	COUNTY	ROUTE	POST MILES	SHEET NO.	TOTAL SHEETS
07	L.A.	5	21.9/22.1	1	2

Anthony
 DEPUTY DISTRICT ENGINEER
 DATE Aug. 7, 1967

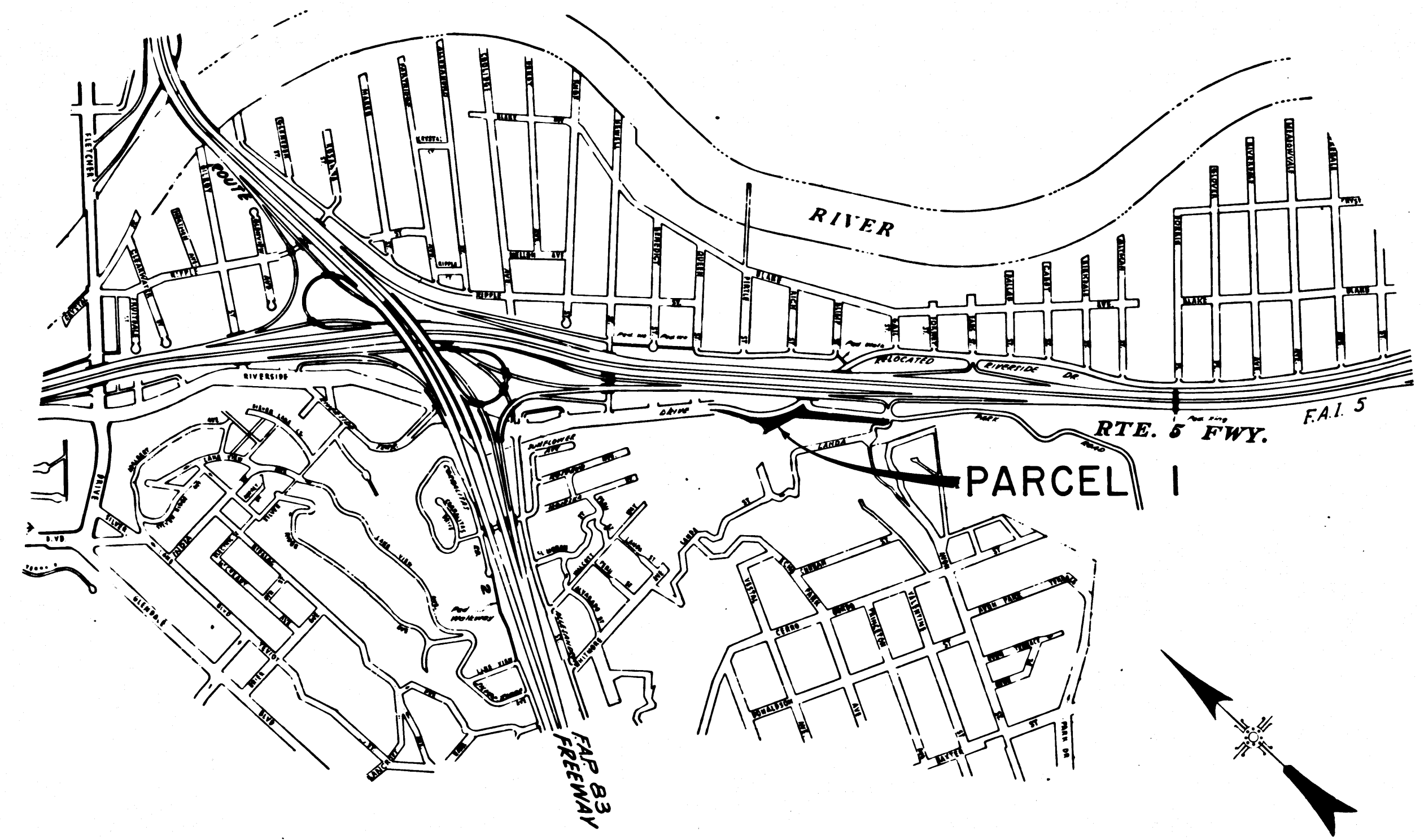
STATE OF CALIFORNIA
 TRANSPORTATION AGENCY
 DEPARTMENT OF PUBLIC WORKS
 DIVISION OF HIGHWAYS

RIGHT OF WAY MAPS OF
STATE HIGHWAY

In Los Angeles County between
 Landa Street and Queen Street

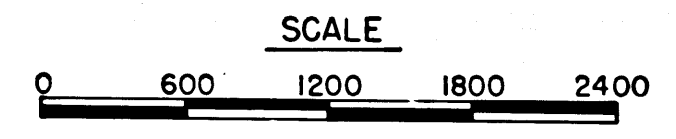
3172

RECORDED
 AT REQUEST OF
 DEPT. OF PUBLIC WORKS
 AUG. 9, 1967
 2 MIN. PAST 2 P.M.
 IN BOOK 6
 AT PAGE 14
 OF STATE HIGHWAY MAPS
 LOS ANGELES COUNTY, CALIF.
 RAY E. LEE
 COUNTY RECORDER
 BY *[Signature]* fpe



CITY OF LOS ANGELES

INTERSTATE
 STATE OF CALIFORNIA
 TRANSPORTATION AGENCY
 DEPARTMENT OF PUBLIC WORKS
 DIVISION OF HIGHWAYS
 PROPOSED RELINQUISHMENT



REL-612
 DRN BY M.A.C.
 C.L.C. BY G.D.W.
 CK'D BY S.L.T.
 BASE MAP NO'S -
 F-1287
 REF. MAP NO'S -
 AS BUILT NO'S -

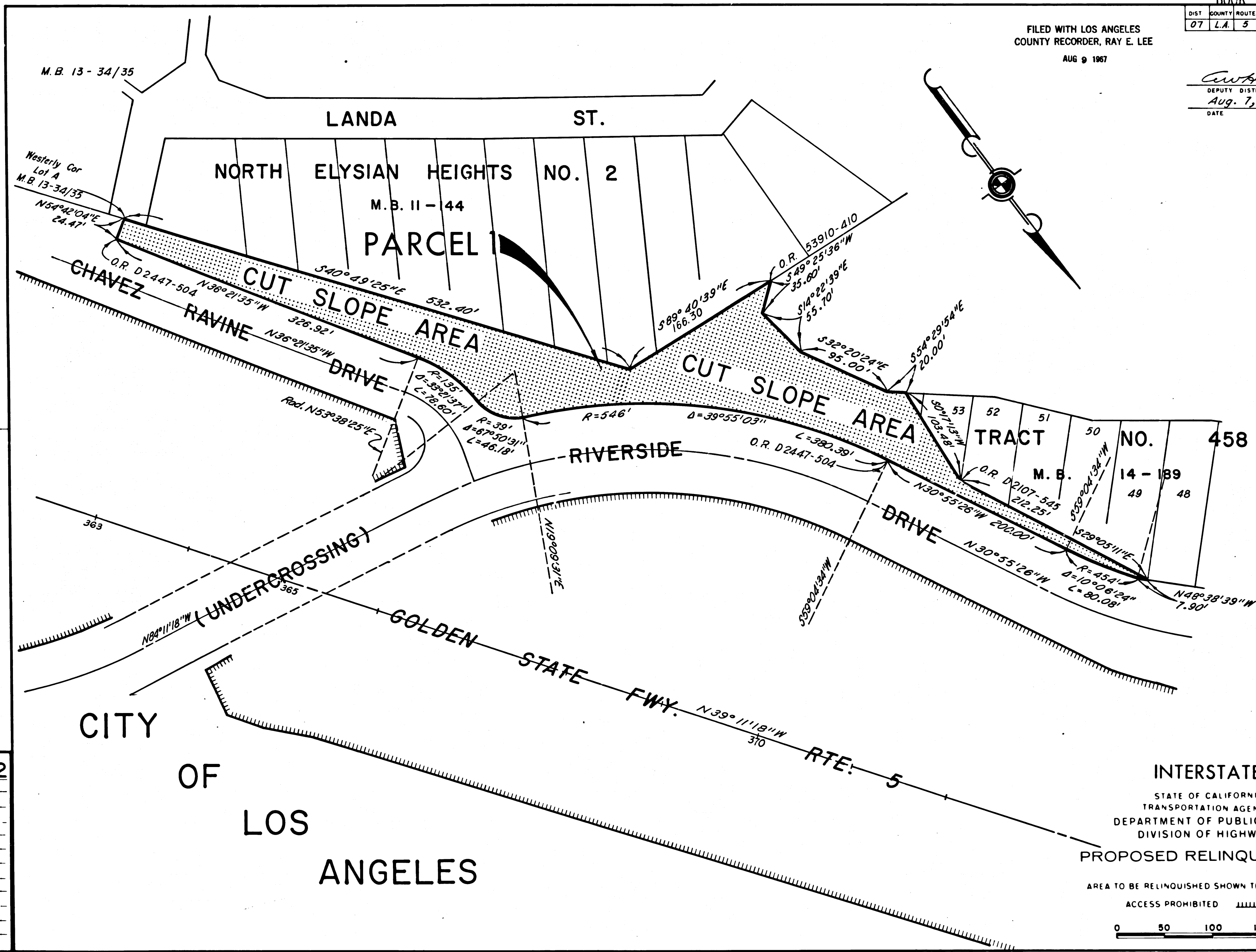
6/14-15

FILED WITH LOS ANGELES COUNTY RECORDER, RAY E. LEE

AUG 9 1967

DIST	COUNTY	ROUTE	POST MILES	SHEET NO.	TOTAL SHEETS
07	L.A.	5	21.9/22.1	2	2

C. W. A. B. Y.
 DEPUTY DISTRICT ENGINEER
 Aug. 7, 1967
 DATE



REL- 612
 DRN BY M.A.C.
 C.L.C BY G.D.W.
 CK'D BY S.L.T.
 BASE MAP NO'S
 F-1287
 REF. MAP NO'S
 AS BUILT NO'S

INTERSTATE
 STATE OF CALIFORNIA
 TRANSPORTATION AGENCY
 DEPARTMENT OF PUBLIC WORKS
 DIVISION OF HIGHWAYS
 PROPOSED RELINQUISHMENT

AREA TO BE RELINQUISHED SHOWN THUS [stippled pattern]
 ACCESS PROHIBITED [hatched pattern]
 0 50 100 150 200

107M 957

107M 957