

DIST.	COUNTY	ROUTE	POST MILES	SHEET NO.	TOTAL SHEETS
7	LA	405	16/28	1	3

STATE OF CALIFORNIA
 TRANSPORTATION AGENCY
 DEPARTMENT OF PUBLIC WORKS
 DIVISION OF HIGHWAYS

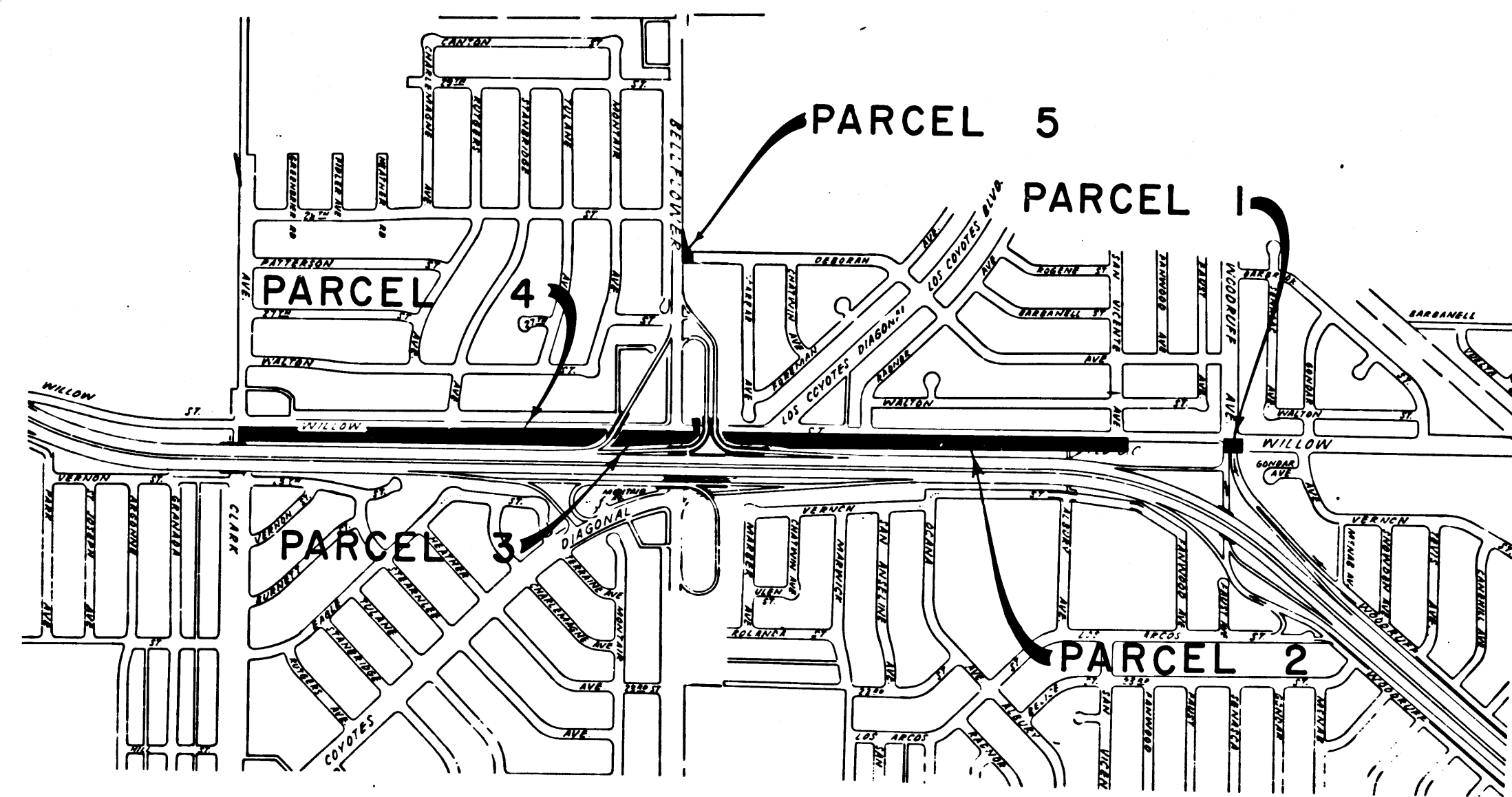
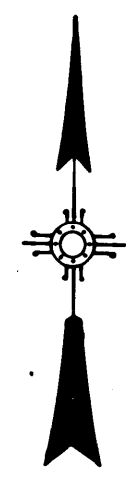
Anthony
 DEPUTY DISTRICT ENGINEER
 Aug. 11, 1967
 DATE

RIGHT OF WAY MAPS OF
STATE HIGHWAY

In the City of Long Beach between
 Woodruff Ave. and Clark Ave.

3084

RECORDED
 AT REQUEST OF
 DEPT. OF PUBLIC WORKS
 AUG. 15, 1967
 30 MIN. PART 12 P.M.
 IN BOOK 6
 AT PAGE 16
 OF STATE HIGHWAY MAPS
 LOS ANGELES COUNTY, CALIF.
 RAY E. LEE
 COUNTY RECORDER
Free
 Deputy



6/16-23

REL-487
 DRN BY L.R.A.
 C/LC BY S.L.T.
 CK'D BY G.D.M.
 BASE MAP NO'S
 F-1900
 REF. MAP NOS.
 AS BUILT NO'S
 150-10

CITY OF LONG BEACH

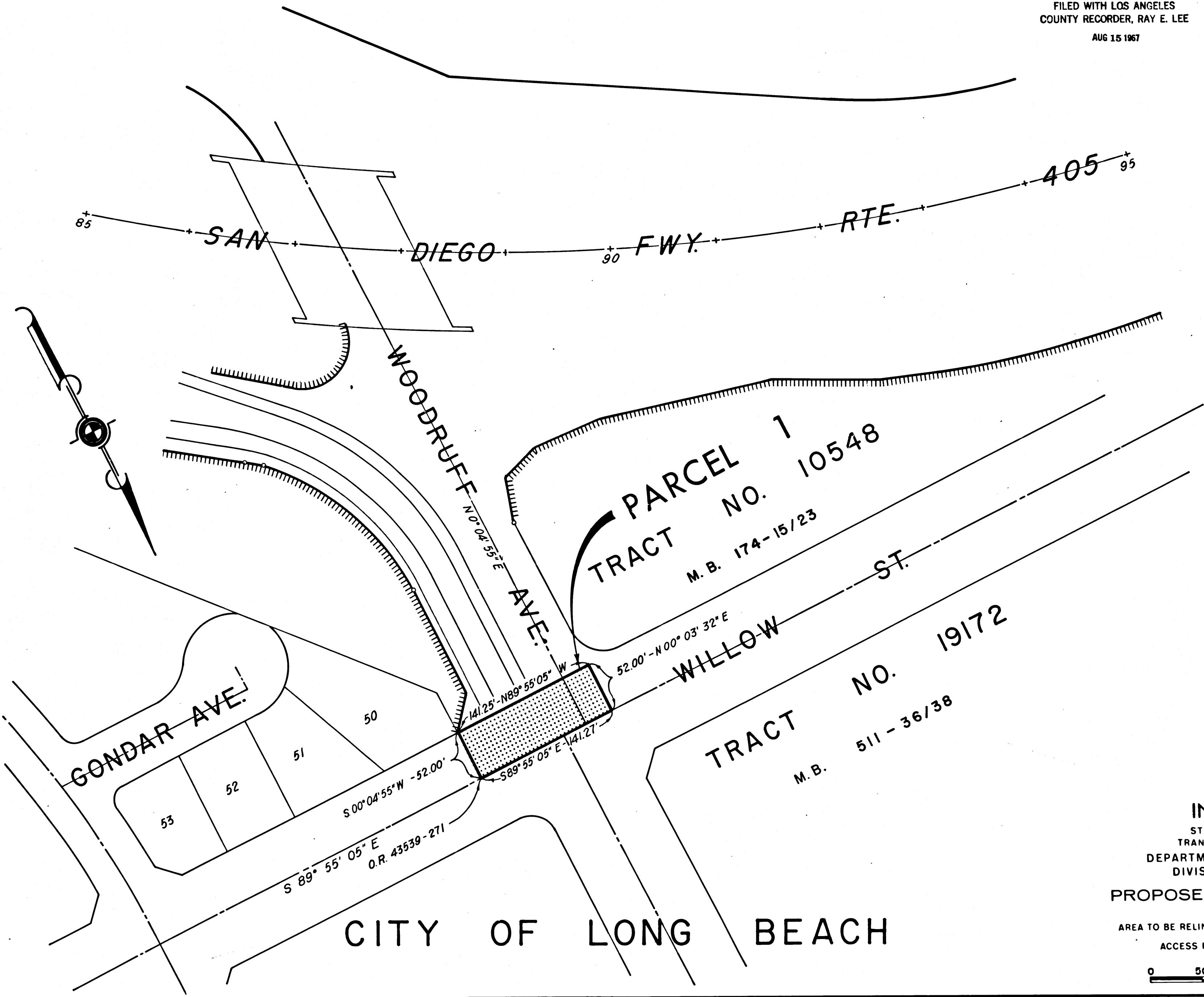
INTERSTATE
 STATE OF CALIFORNIA
 TRANSPORTATION AGENCY
 DEPARTMENT OF PUBLIC WORKS
 DIVISION OF HIGHWAYS
 PROPOSED RELINQUISHMENT



FILED WITH LOS ANGELES
COUNTY RECORDER, RAY E. LEE
AUG 15 1967

DIST.	COUNTY	ROUTE	POST MILES	SHEET NO.	TOTAL SHEETS
7	LA	405	16/28	2	8

Anthony
DEPUTY DISTRICT ENGINEER
DATE Aug. 11, 1967



REL-487
 DRN BY L.R.A.
 C'LC BY S.L.T.
 CK'D BY G.D.W.
 BASE MAP NO'S
 F-1900
 REF. MAP NO'S
 AS BUILT NO'S
 150-10

INTERSTATE
 STATE OF CALIFORNIA
 TRANSPORTATION AGENCY
 DEPARTMENT OF PUBLIC WORKS
 DIVISION OF HIGHWAYS
 PROPOSED RELINQUISHMENT

AREA TO BE RELINQUISHED SHOWN THUS

ACCESS PROHIBITED

0 50 100 150 200

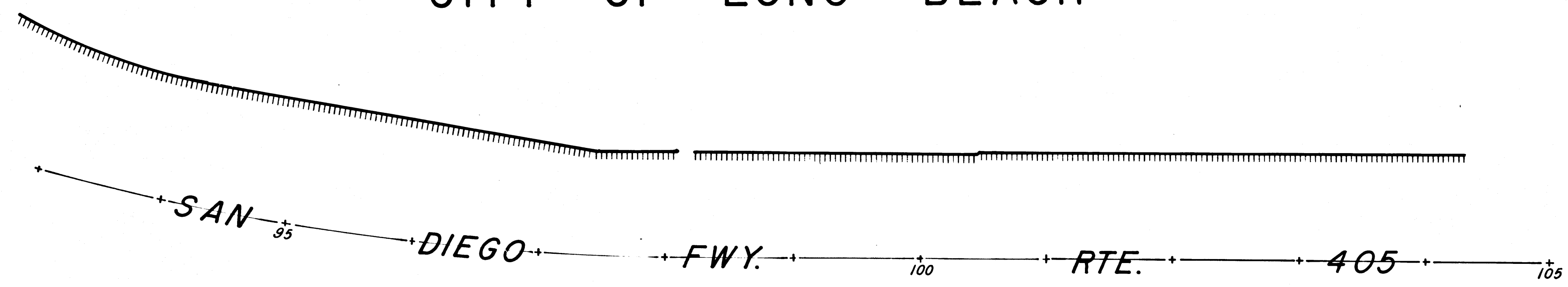
CITY OF LONG BEACH

FILED WITH LOS ANGELES
COUNTY RECORDER, RAY E. LEE
AUG 15 1967

DIST	COUNTY	ROUTE	POST MILES	SHEET TOTAL
7	LA	405	16/28	3 8

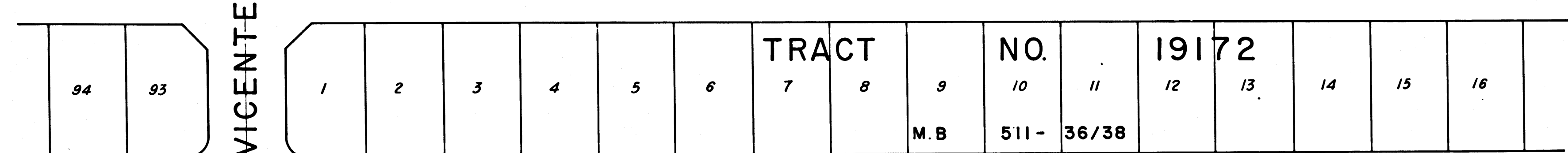
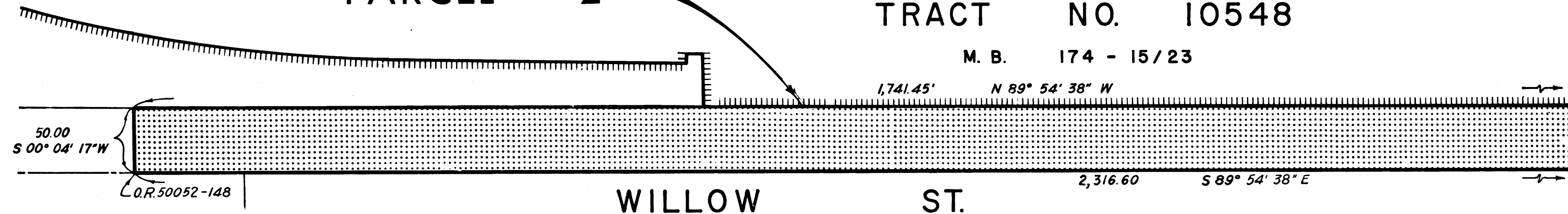
G. D. W.
DEPUTY COUNTY ENGINEER
Aug. 11, 1967
DATE

CITY OF LONG BEACH

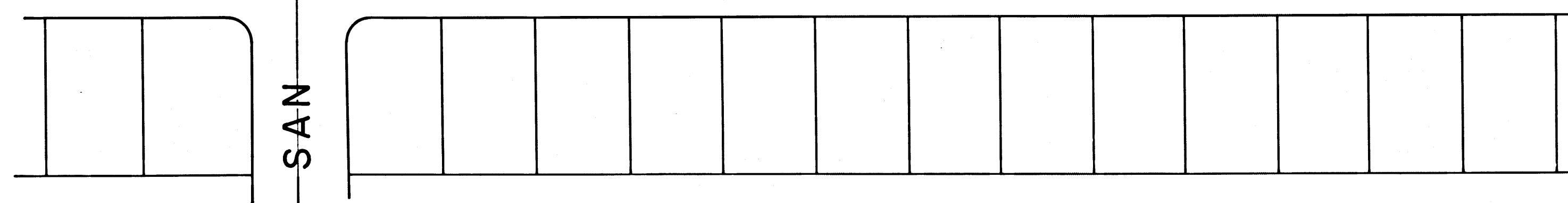


PARCEL 2 TRACT NO. 10548

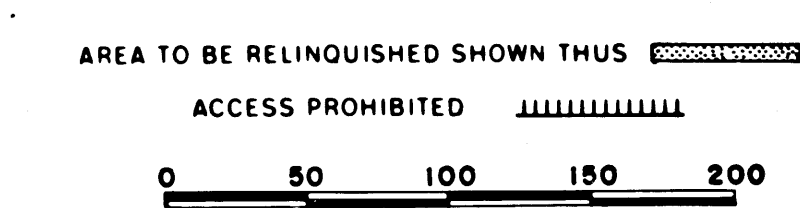
M. B. 174 - 15/23



WALTON ST. N 89° 47' 11" W



INTERSTATE
STATE OF CALIFORNIA
TRANSPORTATION AGENCY
DEPARTMENT OF PUBLIC WORKS
DIVISION OF HIGHWAYS
PROPOSED RELINQUISHMENT



REL-487
ORN BY L.R.A.
C'LC BY S.L.T.
CK'D BY G.D.W.
BASE MAP NO'S
F-1900
REF. MAP NO'S
AS BUILT NO'S
150-10
3

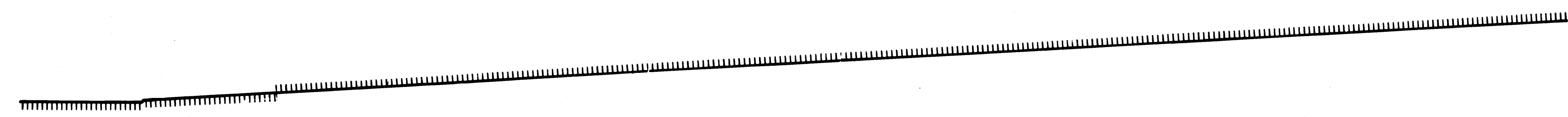
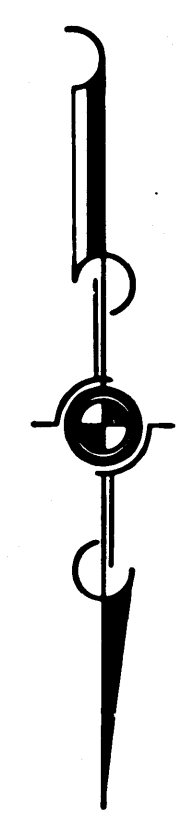
FILED WITH LOS ANGELES COUNTY RECORDER, RAY E. LEE

AUG 15 1967

CITY	COUNTY	ROUTE	POST MILES	SHEET No.	TOTAL SHEETS
7	LA	405	16/28	4	8

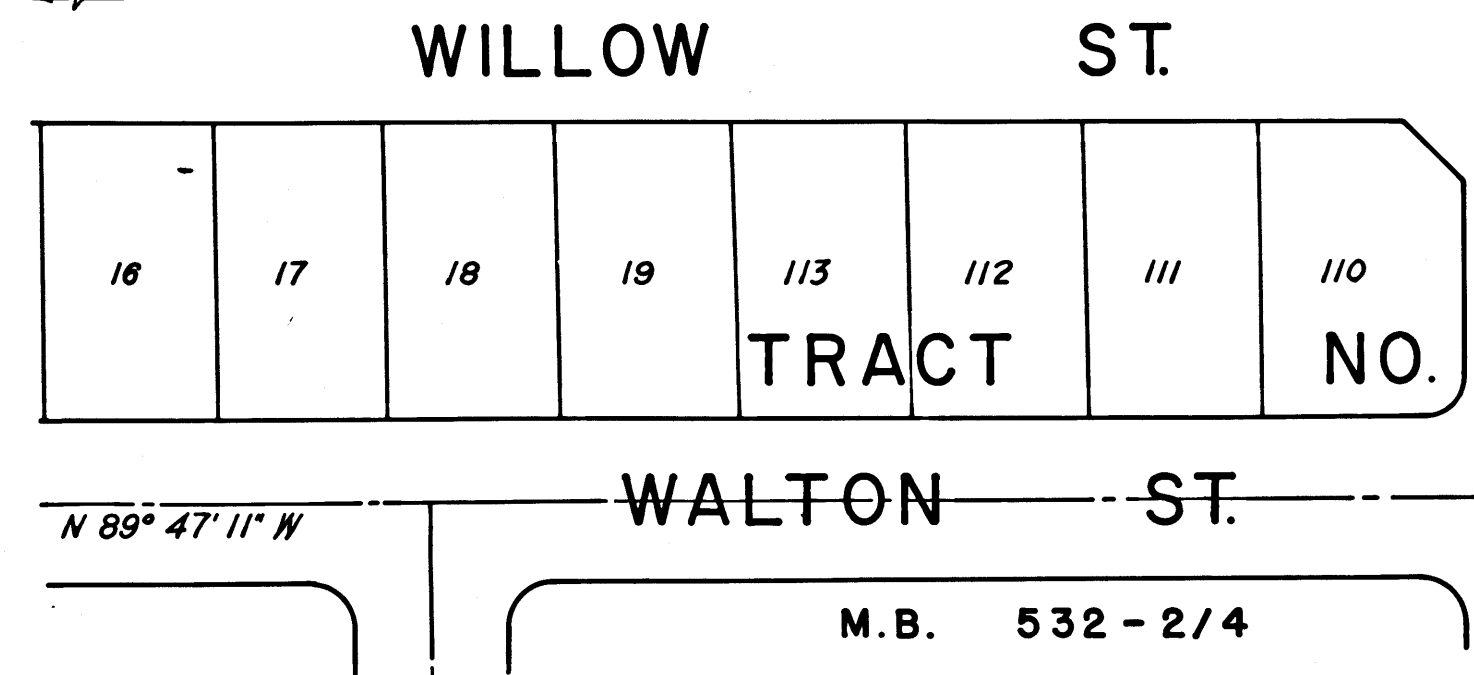
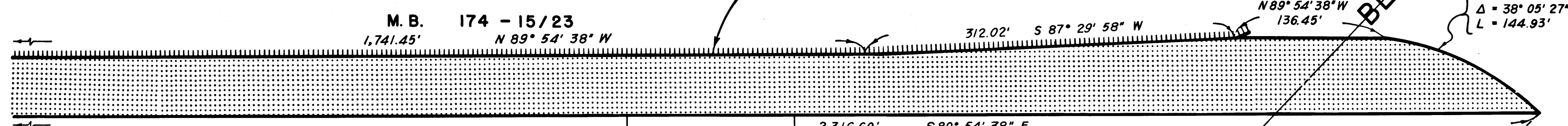
Authy
 DEPUTY DISTRICT ENGINEER
 Aug. 11, 1967
 DATE

CITY OF LONG BEACH

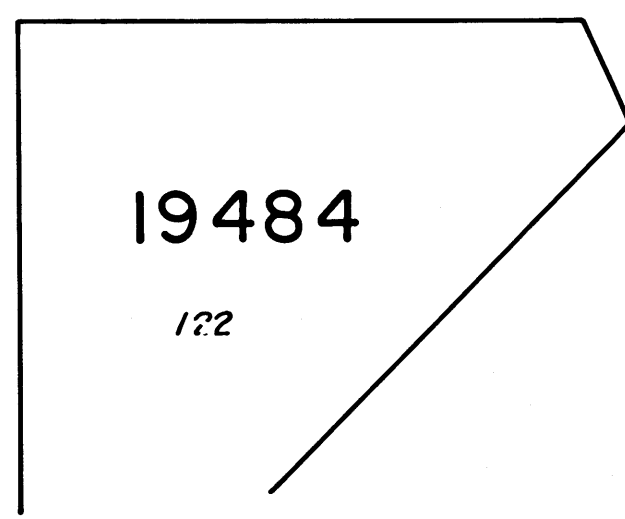
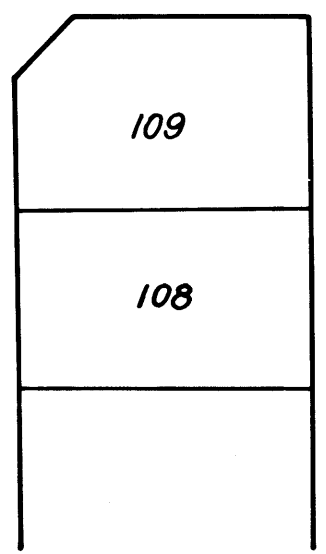


105 SAN DIEGO FWY. RTE. 115 405

TRACT NO. 10548 PARCEL 2



RADNOR AVE.



LOS COYOTES
 N 45° 05' 05\"/>

INTERSTATE
 STATE OF CALIFORNIA
 TRANSPORTATION AGENCY
 DEPARTMENT OF PUBLIC WORKS
 DIVISION OF HIGHWAYS

PROPOSED RELINQUISHMENT

AREA TO BE RELINQUISHED SHOWN THUS

ACCESS PROHIBITED

0 50 100 150 200

REL-487
 DRN BY L.R.A.
 C'LC BY S.L.T.
 C'KD BY G.D.W.
 BASE MAP NO'S F-1900
 REF. MAP NOS. _____
 AS BUILT NO'S 150-10

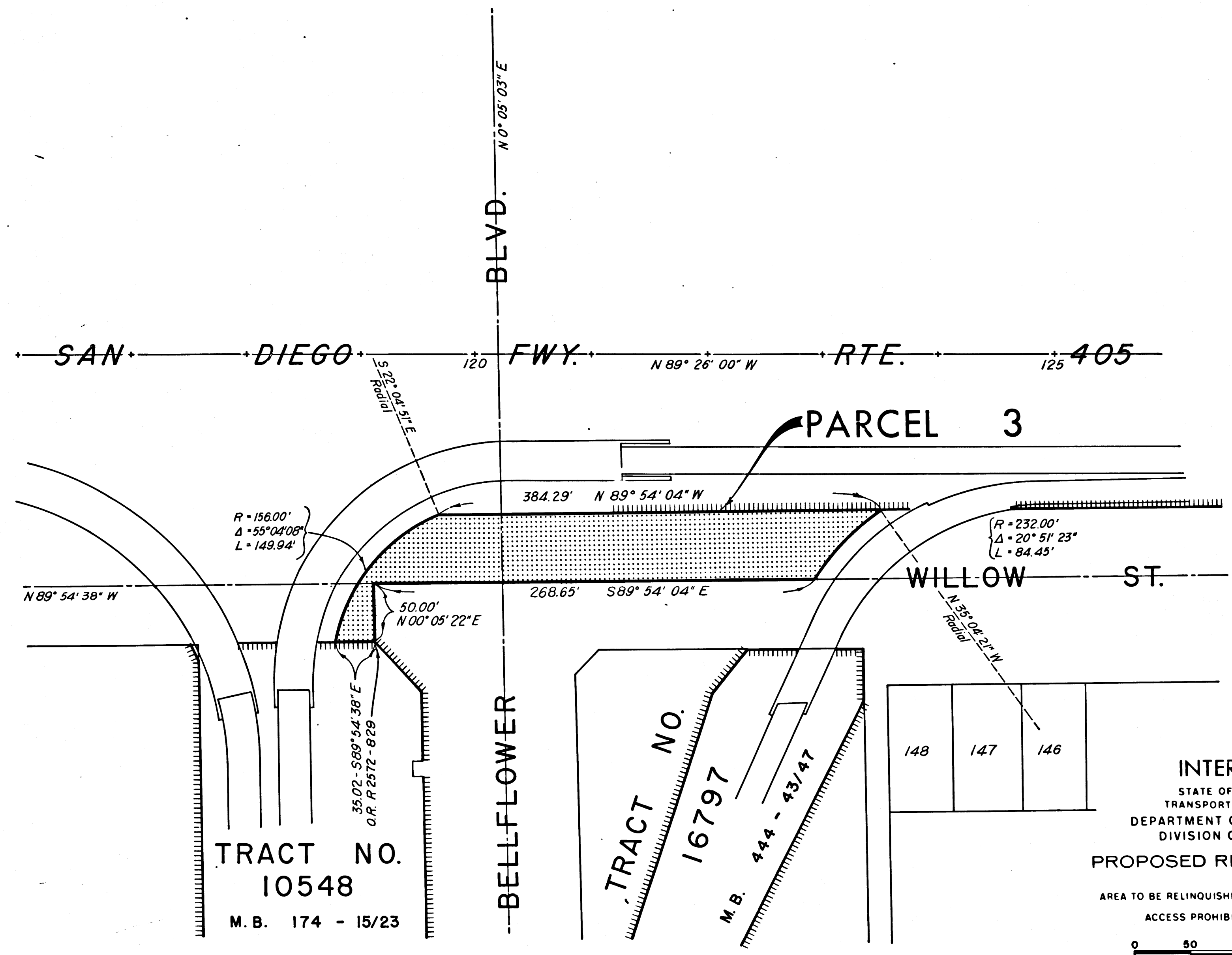
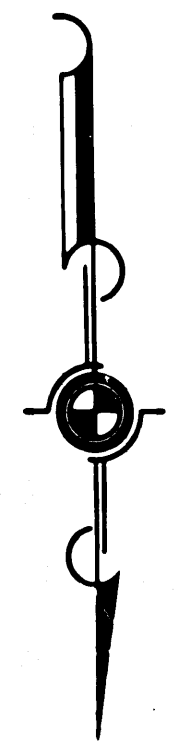
FILED WITH LOS ANGELES COUNTY RECORDER, RAY E. LEE

AUG 15 1967

DIST	COUNTY	ROUTE	POST MILES	SHEET No.	TOTAL SHEETS
7	LA	405	1.6/2.8	5	8

Anthony
DEPUTY DISTRICT ENGINEER
Aug. 11, 1967
DATE

CITY OF LONG BEACH



REL-487
 DRN BY L.R.A.
 C.L.C. BY S.L.T.
 CK'D BY G.D.W.
 BASE MAP NO'S F-1900
 REF. MAP NO'S _____
 AS BUILT NO'S 150-10

INTERSTATE
 STATE OF CALIFORNIA
 TRANSPORTATION AGENCY
 DEPARTMENT OF PUBLIC WORKS
 DIVISION OF HIGHWAYS

PROPOSED RELINQUISHMENT

AREA TO BE RELINQUISHED SHOWN THUS

ACCESS PROHIBITED

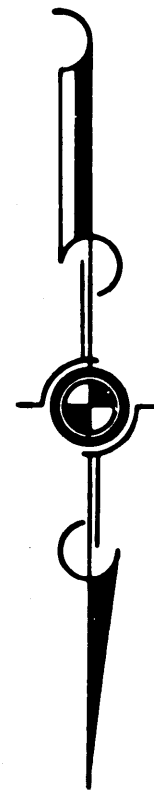
0 50 100 150 200

FILED WITH LOS ANGELES
COUNTY RECORDER, RAY E. LEE
AUG 15 1967

DIST	COUNTY	ROUTE	POST MILES	SHEET No.	TOTAL SHEETS
7	LA	405	16/28	6	8

Anthony
DEPUTY DISTRICT ENGINEER
Aug 11, 1967
DATE

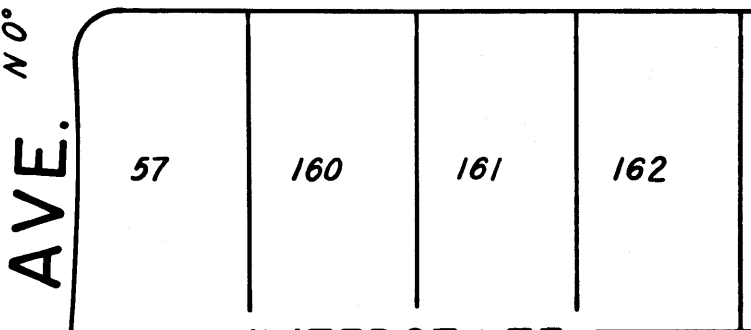
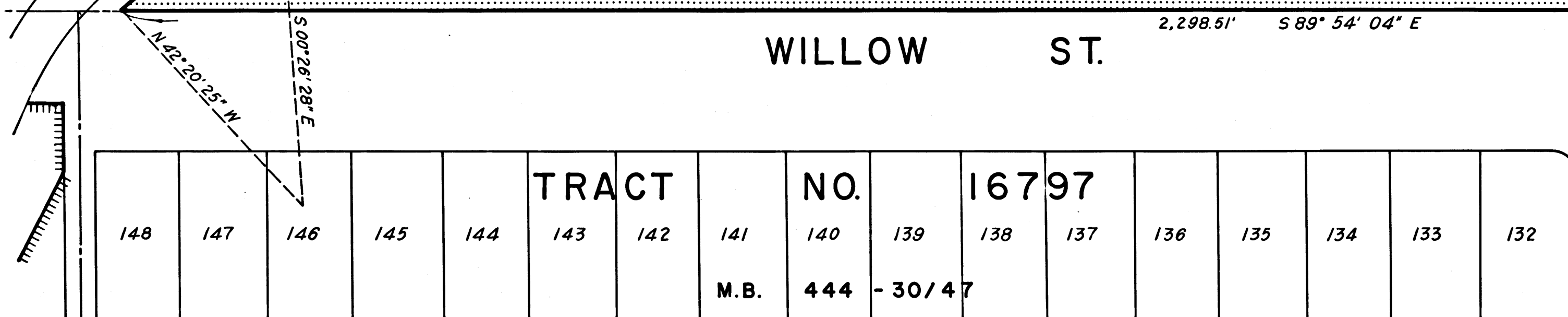
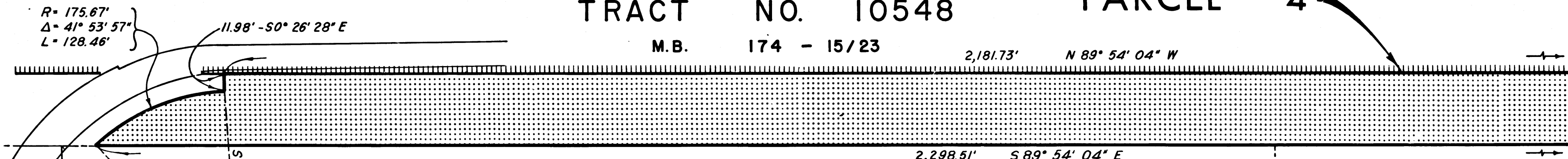
CITY OF LONG BEACH



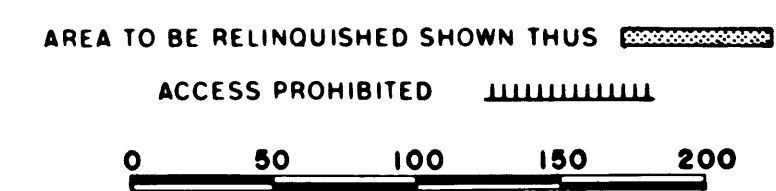
125 SAN + DIEGO + FWY. 130 N 89° 26' 00" W + RTE. + 405 135

TRACT NO. 10548
M.B. 174 - 15/23

PARCEL 4



INTERSTATE
STATE OF CALIFORNIA
TRANSPORTATION AGENCY
DEPARTMENT OF PUBLIC WORKS
DIVISION OF HIGHWAYS
PROPOSED RELINQUISHMENT



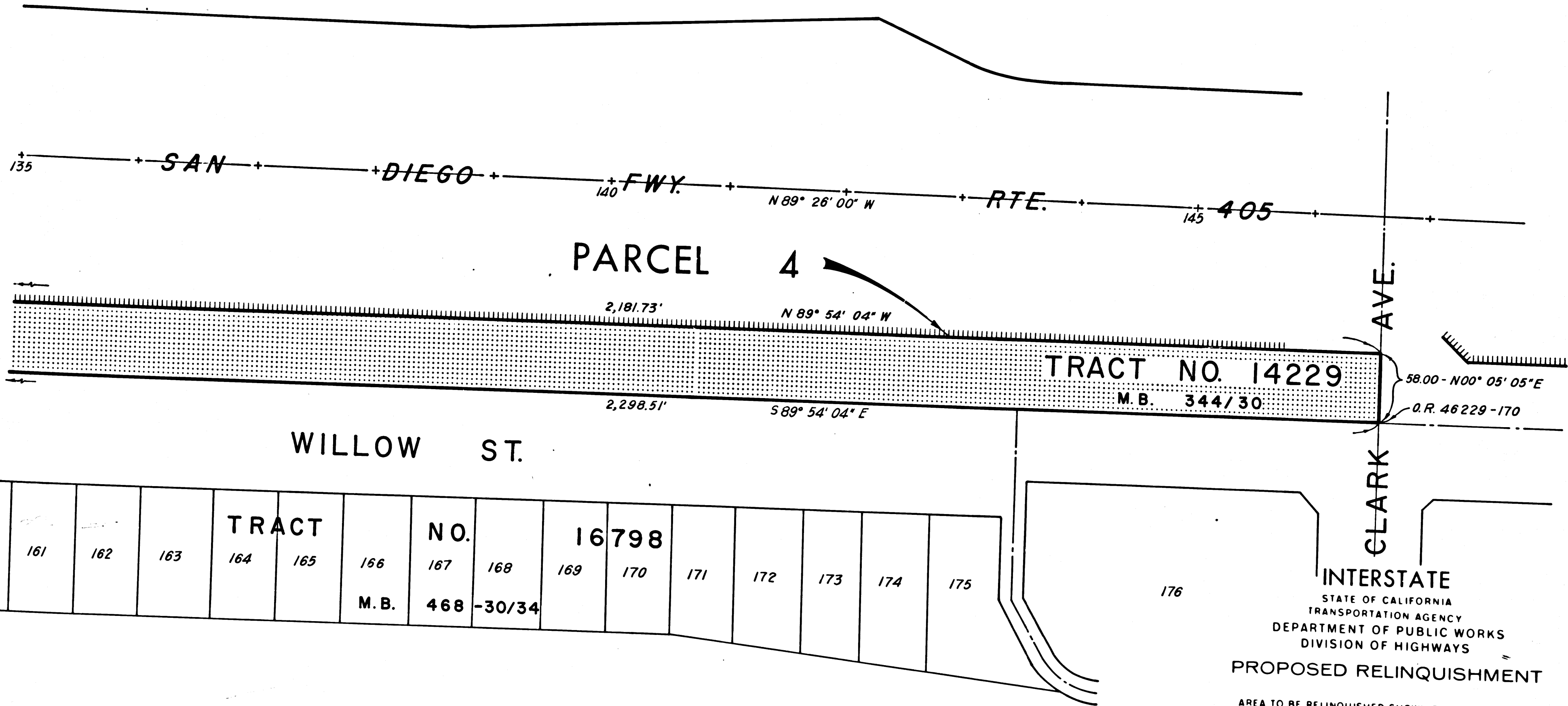
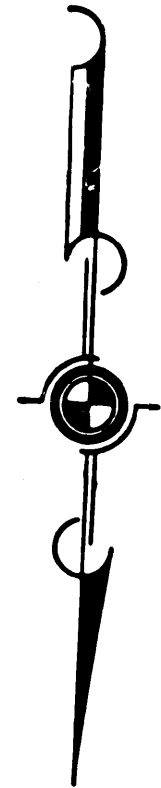
REL-487
DRN BY L.R.A.
C/LC BY S.L.I.
CK'D BY G.D.W.
BASE MAP NO'S
F-1900
REF. MAP NO'S
AS BUILT NO'S
150-10

FILED WITH LOS ANGELES COUNTY RECORDER, RAY E. LEE	DIST.	COUNTY	ROUTE	POST MILES	SHEET NO.	TOTAL SHEETS
	7	LA	405	164/2.76	7	8

AUG 15 1967

CITY OF LONG BEACH

Arthur
DEPUTY DISTRICT ENGINEER
Aug 11, 1967
DATE



REL-487
 DRN BY L.R.A.
 C.L.C. BY S.L.T.
 CK'D BY G.D.W.
 BASE MAP NO'S F-1900
 REF. MAP NO'S
 AS BUILT NO'S 150-10
 7

TRACT										NO.					M.B.	
161	162	163	164	165	166	167	168	169	170	171	172	173	174	175	16798	468 - 30/34

AREA TO BE RELINQUISHED SHOWN THUS [shaded box]
 ACCESS PROHIBITED [hatched box]
 0 50 100 150 200

INTERSTATE
 STATE OF CALIFORNIA
 TRANSPORTATION AGENCY
 DEPARTMENT OF PUBLIC WORKS
 DIVISION OF HIGHWAYS
 PROPOSED RELINQUISHMENT

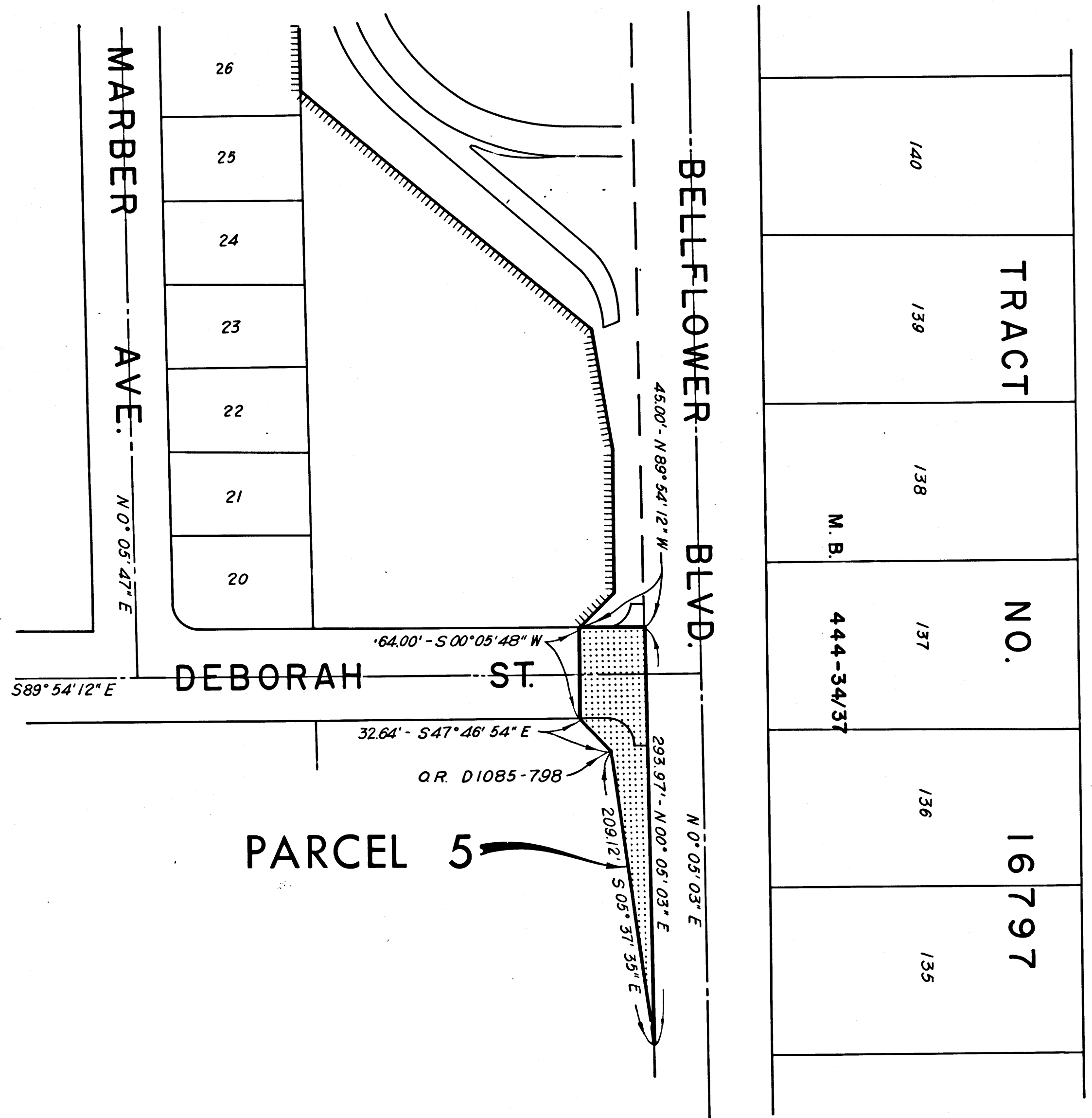
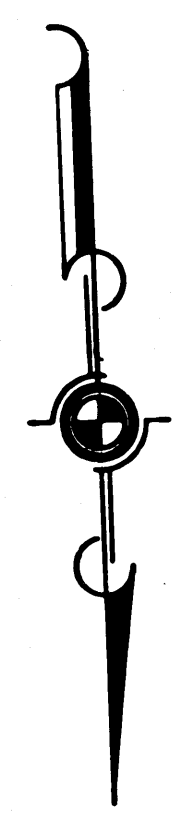
FILED WITH LOS ANGELES COUNTY RECORDER, RAY E. LEE

DIST.	COUNTY	ROUTE	POST MILES	SHEET NO.	TOTAL SHEETS
7	L.A.	405	164/276	8	8

AUG 15 1967

Anthony
DEPUTY DISTRICT ENGINEER
Aug. 11, 1967
DATE

115 --- SAN DIEGO FWY. 120 N 89° 26' 00" W RTE. 405 ---



TRACT	NO.	16797
140		
139		
138	M. B.	
137	444-34/37	
136		
135		

REL-487
 DRN BY L.R.A.
 C'LC BY S.L.T.
 CK'D BY G.D.W.
 BASE MAP NO'S
 F-1900
 REF. MAP NO'S
 AS BUILT NO'S
 150-10
 8

CITY OF LONG BEACH

INTERSTATE
 STATE OF CALIFORNIA
 TRANSPORTATION AGENCY
 DEPARTMENT OF PUBLIC WORKS
 DIVISION OF HIGHWAYS
 PROPOSED RELINQUISHMENT
 AREA TO BE RELINQUISHED SHOWN THUS [stippled pattern]
 ACCESS PROHIBITED [hatched pattern]
 0 50 100 150 200