

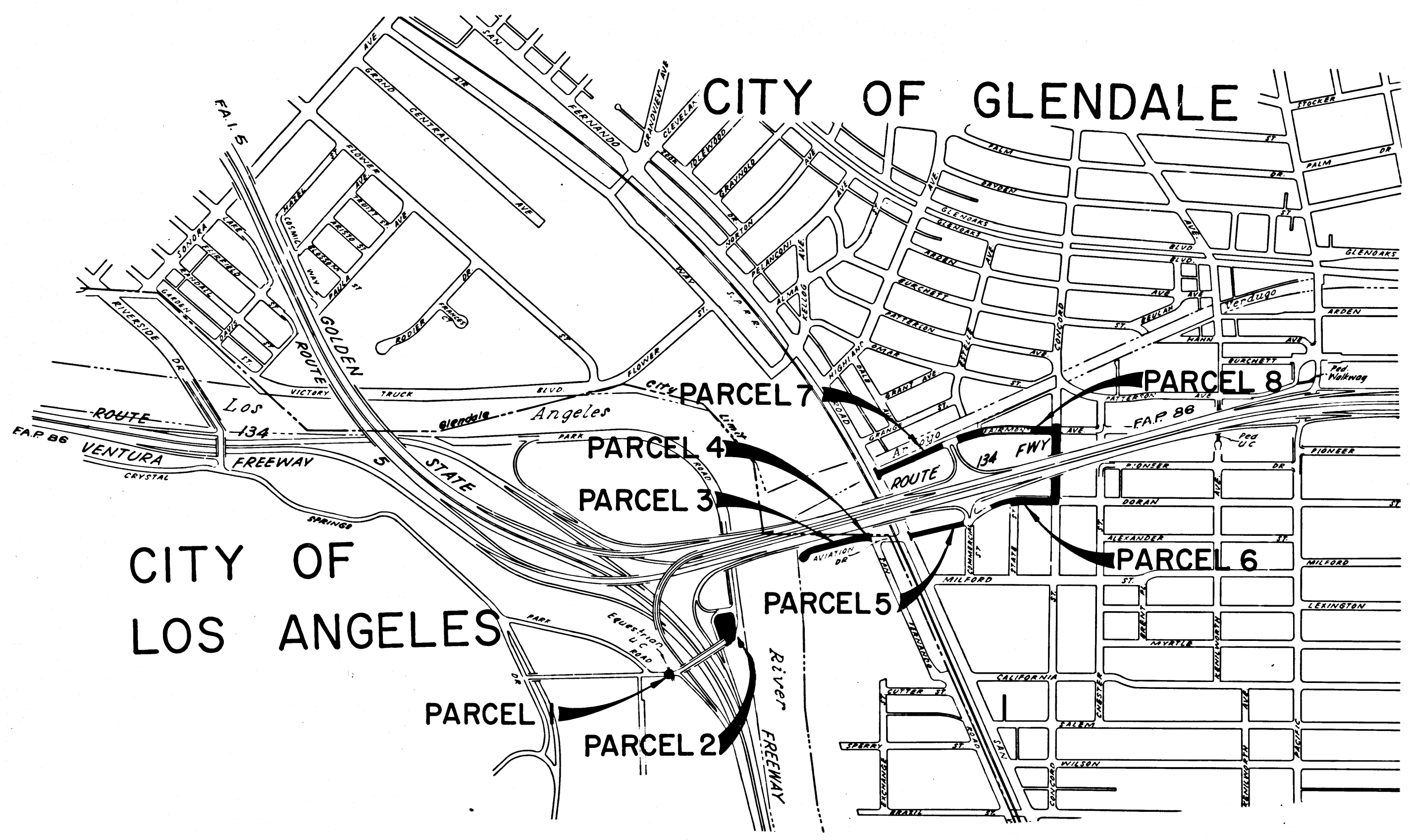
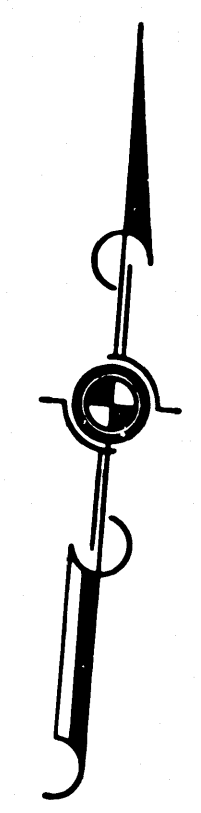
C. H. Lee
 DEPUTY DISTRICT ENGINEER
 DATE August 14, 1967

STATE OF CALIFORNIA
 TRANSPORTATION AGENCY
 DEPARTMENT OF PUBLIC WORKS
 DIVISION OF HIGHWAYS

RIGHT OF WAY MAPS OF
STATE HIGHWAY

In the County of Los Angeles between
 Route 5/134 Interchange and Concord Street.

3219
 RECORDED
 AT REQUEST OF
 DEPT. OF PUBLIC WORKS
 AUG. 16, 1967
 18 MIN. 38 PM.
 IN BOOK 6
 AT PAGE 24
 OF STATE HIGHWAY MAPS
 LOS ANGELES COUNTY, CALIF.
 RAY E. LEE
 COUNTY RECORDER
 BY *Free*



3/18

REL-613
 REL-614
 DRN BY M.A.G.
 C/LC BY M.M.
 C/K'D BY S.L.T.
 BASE MAP NO'S
F1162
F1292
 REF MAP NO'S
GCM 172-11
 AS BUILT NO'S
171-4

STATE OF CALIFORNIA
 TRANSPORTATION AGENCY
 DEPARTMENT OF PUBLIC WORKS
 DIVISION OF HIGHWAYS
 PROPOSED RELINQUISHMENT

SCALE
 0 600 1200 1800 2400

CITY OF LOS ANGELES

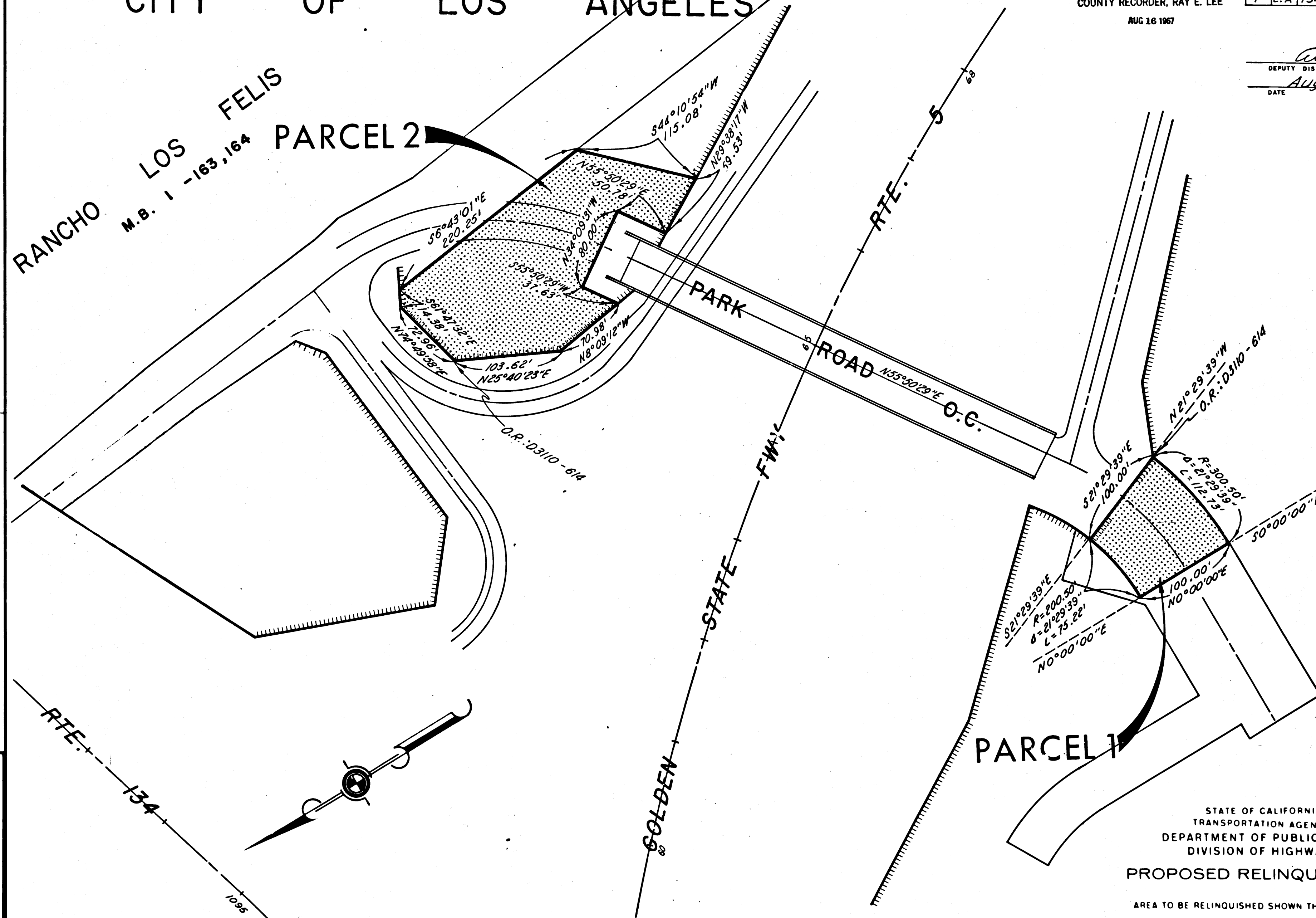
BOOK 6 PAGE 25

FILED WITH LOS ANGELES COUNTY RECORDER, RAY E. LEE
AUG 16 1967

DIST.	COUNTY ROUTE	POST MILES	SHEET NO.	TOTAL SHEETS
7	L.A. 134	5.3/8.0	2	5

C. W. Hoy
DEPUTY DISTRICT ENGINEER
DATE AUGUST 14, 1967

RANCHO LOS FELIS
M.B. 1 - 163,164 PARCEL 2



613
REL- 614
DRN BY M.A.C.
CLC BY M.M.
CK'D BY S.L.T.
BASE MAP NO'S F1290
REF. MAP NO'S CCM 172.11
AS BUILT NO'S 171-4

STATE OF CALIFORNIA
TRANSPORTATION AGENCY
DIVISION OF PUBLIC WORKS
DIVISION OF HIGHWAYS
PROPOSED RELINQUISHMENT

AREA TO BE RELINQUISHED SHOWN THUS

ACCESS PROHIBITED

0 50 100 150 200

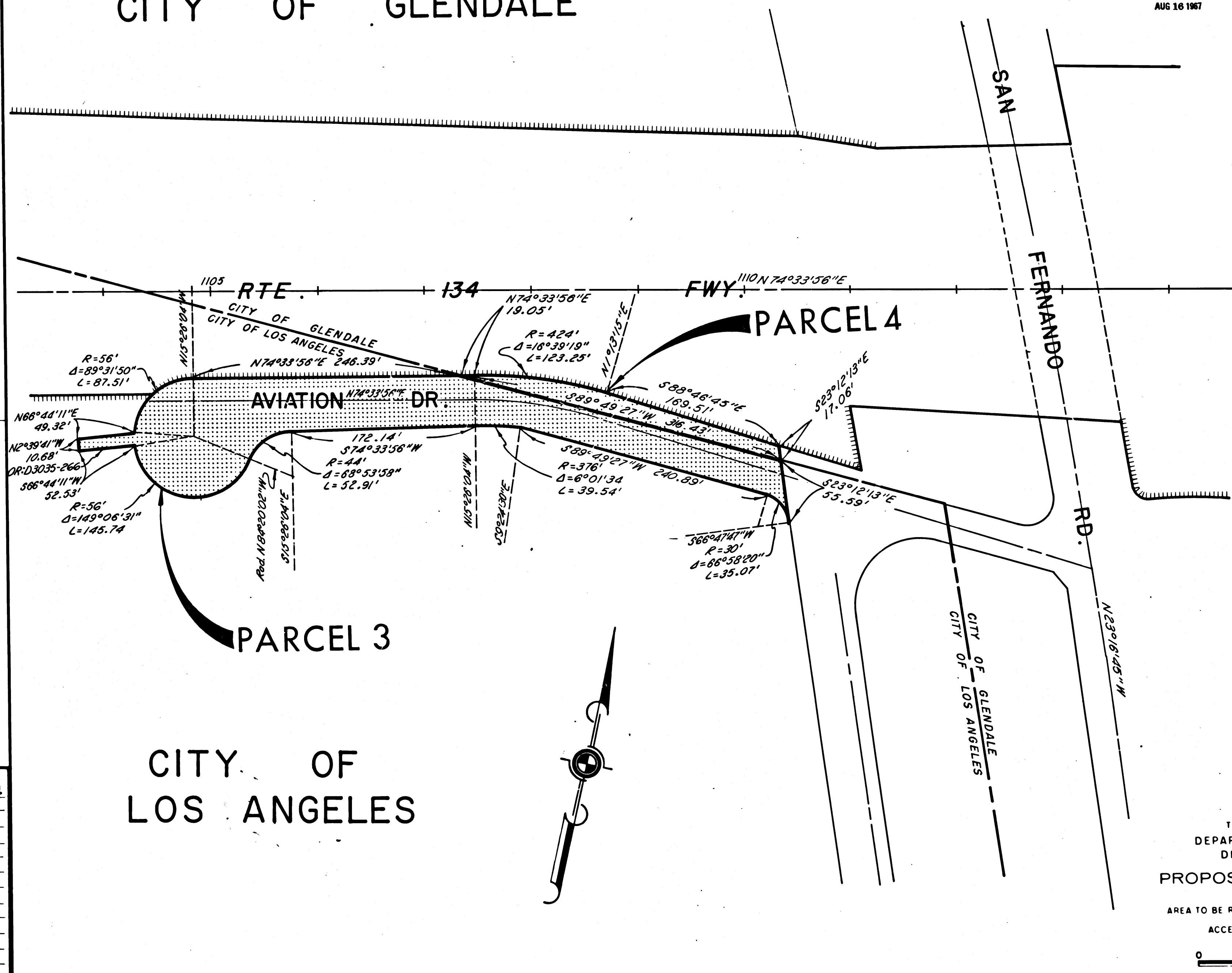
CITY OF GLENDALE

FILED WITH LOS ANGELES
COUNTY RECORDER, RAY E. LEE
AUG 16 1967

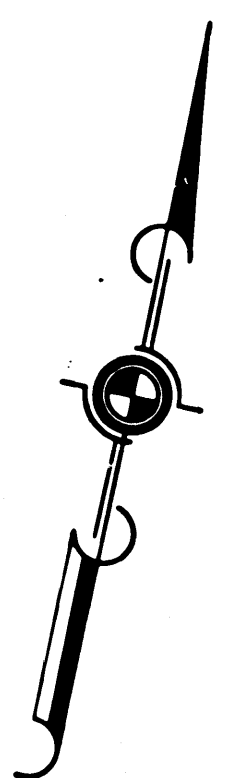
BOOK 6 PAGE 26

DIST.	COUNTY	ROUTE	POST MILES	SHEET NO.	TOTAL SHEETS
7	C.A.	134	5.3/6.0	3	5

Anthony
DEPUTY DISTRICT ENGINEER
August 14, 1967
DATE



CITY OF LOS ANGELES



REL- 613
614
DRN BY M.A.G.
C/LC BY M.M.
CHK'D BY S.L.T.
BASE MAP NO'S F 1102
REF. MAP NO'S CCM 172.11
AS BUILT NO'S 171-4

STATE OF CALIFORNIA
TRANSPORTATION AGENCY
DEPARTMENT OF PUBLIC WORKS
DIVISION OF HIGHWAYS
PROPOSED RELINQUISHMENT

AREA TO BE RELINQUISHED SHOWN THUS

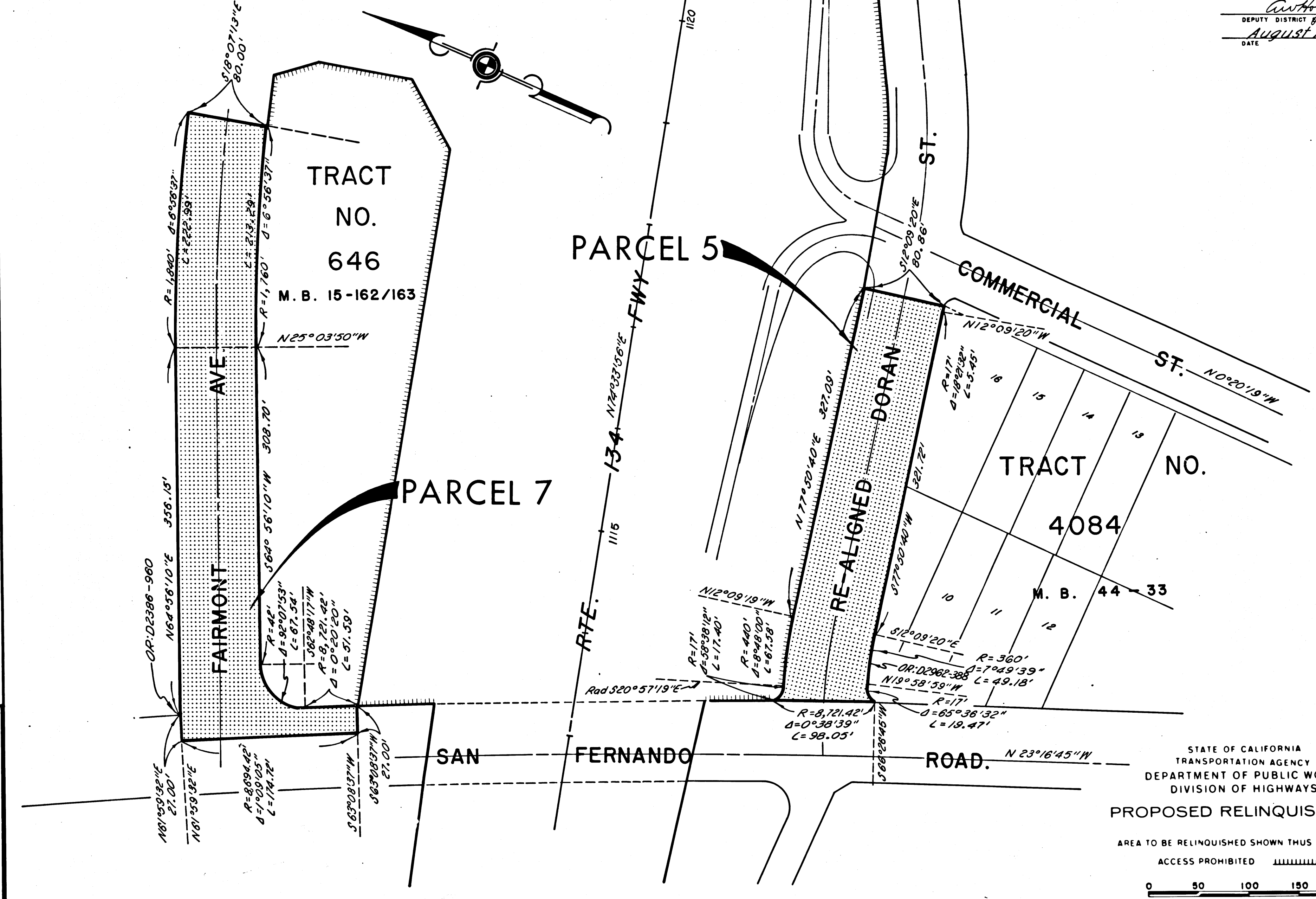
ACCESS PROHIBITED

0 50 100 150 200

AUG 16 1967

Anthony
 DEPUTY DISTRICT ENGINEER
 August 14, 1967
 DATE

CITY OF GLENDALE



TRACT NO. 646
 M. B. 15-162/163

PARCEL 5

PARCEL 7

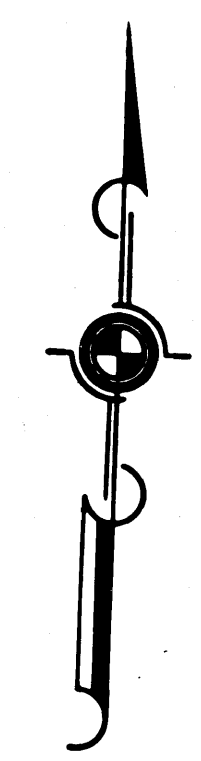
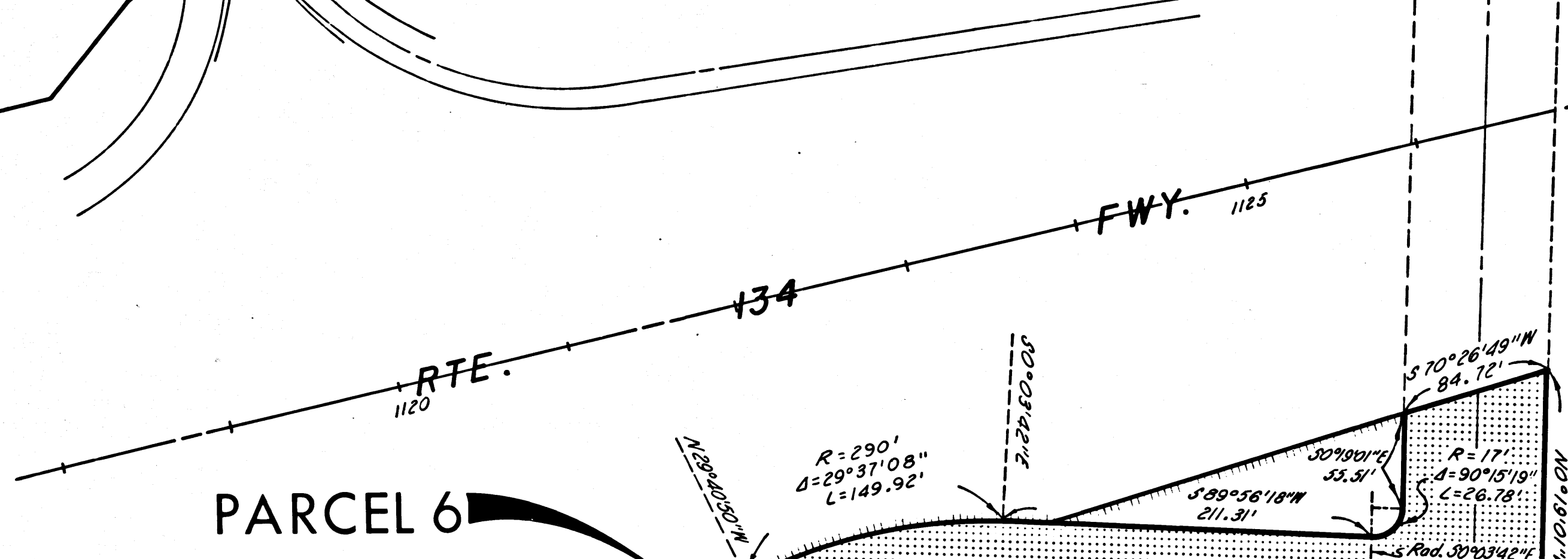
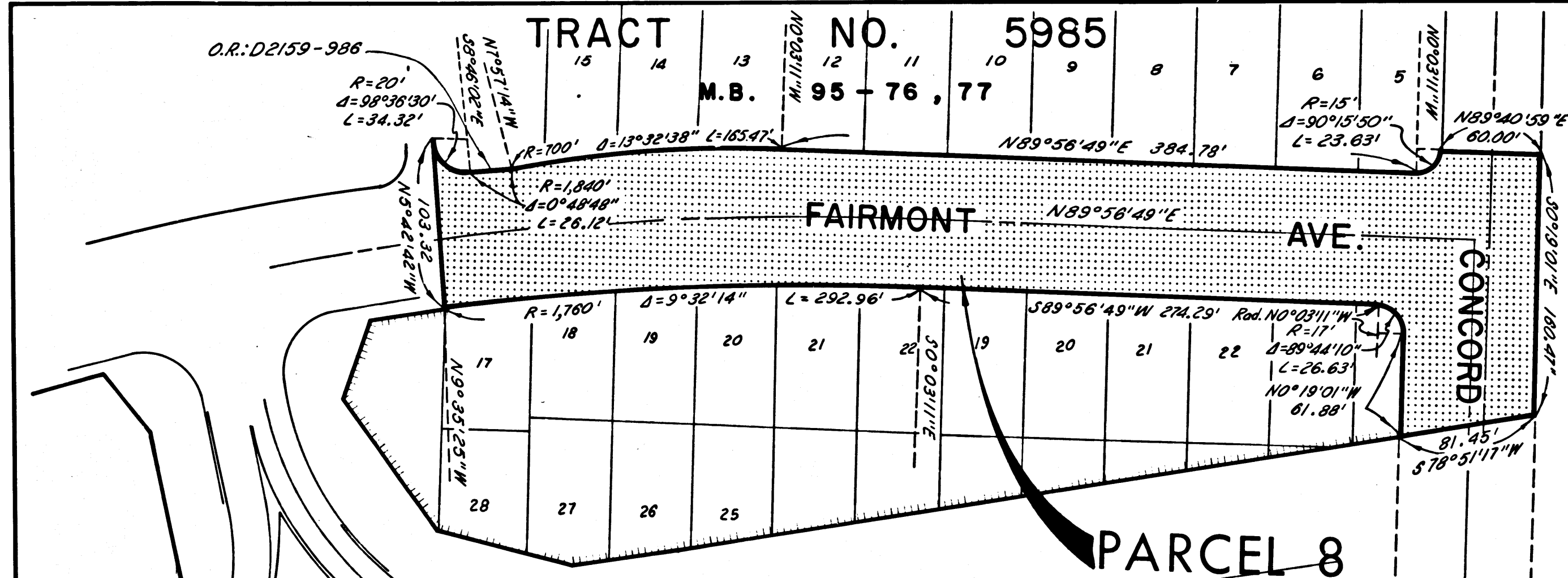
TRACT NO. 4084
 M. B. 44-33

REL- 613
 614
 DRN BY M.A.C.
 C.L.C. BY M.M.
 CK'D BY S.L.T.
 BASE MAP NO'S F1162
 REF MAP NOS CCM 172.11
 AS BUILT NO'S 171-4

STATE OF CALIFORNIA
 TRANSPORTATION AGENCY
 DEPARTMENT OF PUBLIC WORKS
 DIVISION OF HIGHWAYS
 PROPOSED RELINQUISHMENT
 AREA TO BE RELINQUISHED SHOWN THUS [hatched box]
 ACCESS PROHIBITED [hatched box]
 0 50 100 150 200

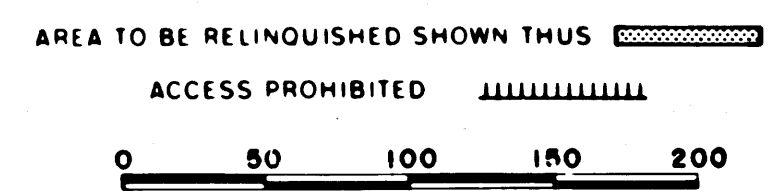
FILED WITH LOS ANGELES COUNTY RECORDER, RAY E. LEE
DIST. COUNTY ROUTE POST MILES SHEET NO. TOTAL SHEETS
7 L.A. 134 5.3/6.0 5 5
AUG 16 1967

Anthony
DEPUTY DISTRICT ENGINEER
August 14, 1967
DATE



REL- 613
614
DRN BY M.A.C.
C.L.C. BY M.M.
CK'D BY S.L.T.
BASE MAP NO'S F1162
REF MAP NO'S CCM 172.11
AS BUILT NO'S 171-4

STATE OF CALIFORNIA
TRANSPORTATION AGENCY
DEPARTMENT OF PUBLIC WORKS
DIVISION OF HIGHWAYS
PROPOSED RELINQUISHMENT



CITY OF GLENDALE