

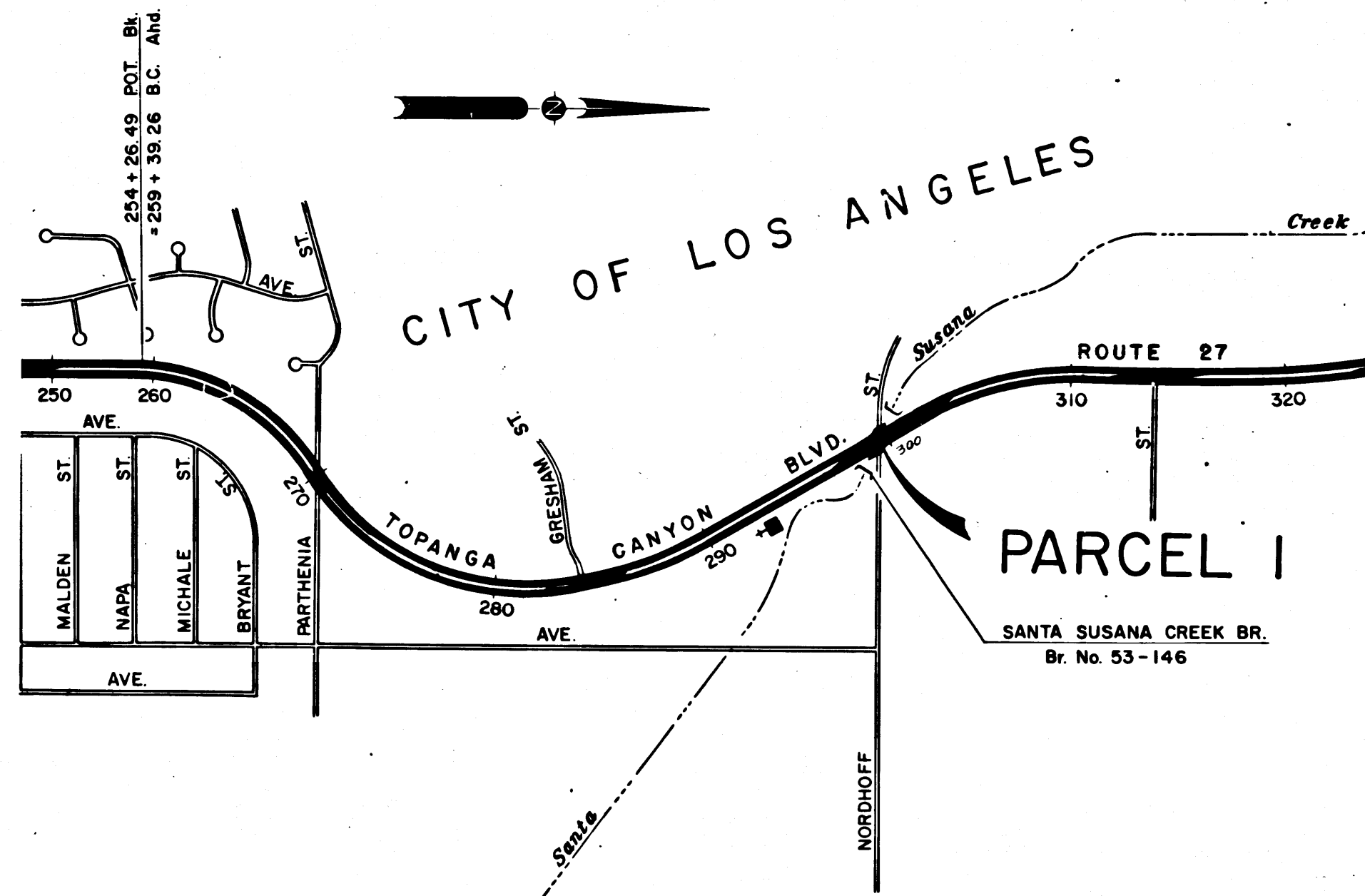
DIST	COUNTY	ROUTE	POST MILES	SHEET NO.	TOTAL SHEETS
07	LA	27	17.0	1	2

STATE OF CALIFORNIA  
 TRANSPORTATION AGENCY  
 DEPARTMENT OF PUBLIC WORKS  
 DIVISION OF HIGHWAYS

*Anthony*  
 DEPUTY DISTRICT ENGINEER  
 Aug. 11, 1967  
 DATE

RIGHT OF WAY MAPS OF  
**STATE HIGHWAY**

In the City of Los Angeles at Nordhoff St.



1242  
 6/9-30

REL-629  
 DRN BY L.S.  
 C'LC BY G.D.W.  
 CK'D BY S.L.T.  
 BASE MAP NO'S  
6765  
 REF. MAP NO'S  
 AS BUILT NO'S

2847

RECORDED  
 AT REQUEST OF  
 DEPT. OF PUBLIC WORKS  
 AUG. 17, 1967  
 4:22 P.M.  
 IN BOOK 6  
 AT PAGE 29  
 OF STATE HIGHWAY MAPS  
 LOS ANGELES COUNTY, CALIF.  
 RAY E. LEE  
 COUNTY RECORDER  
 BY *[Signature]* Free  
 Deputy

STATE OF CALIFORNIA  
 TRANSPORTATION AGENCY  
 DEPARTMENT OF PUBLIC WORKS  
 DIVISION OF HIGHWAYS  
**PROPOSED RELINQUISHMENT**

SCALE  
 0 600 1200 1800 2400

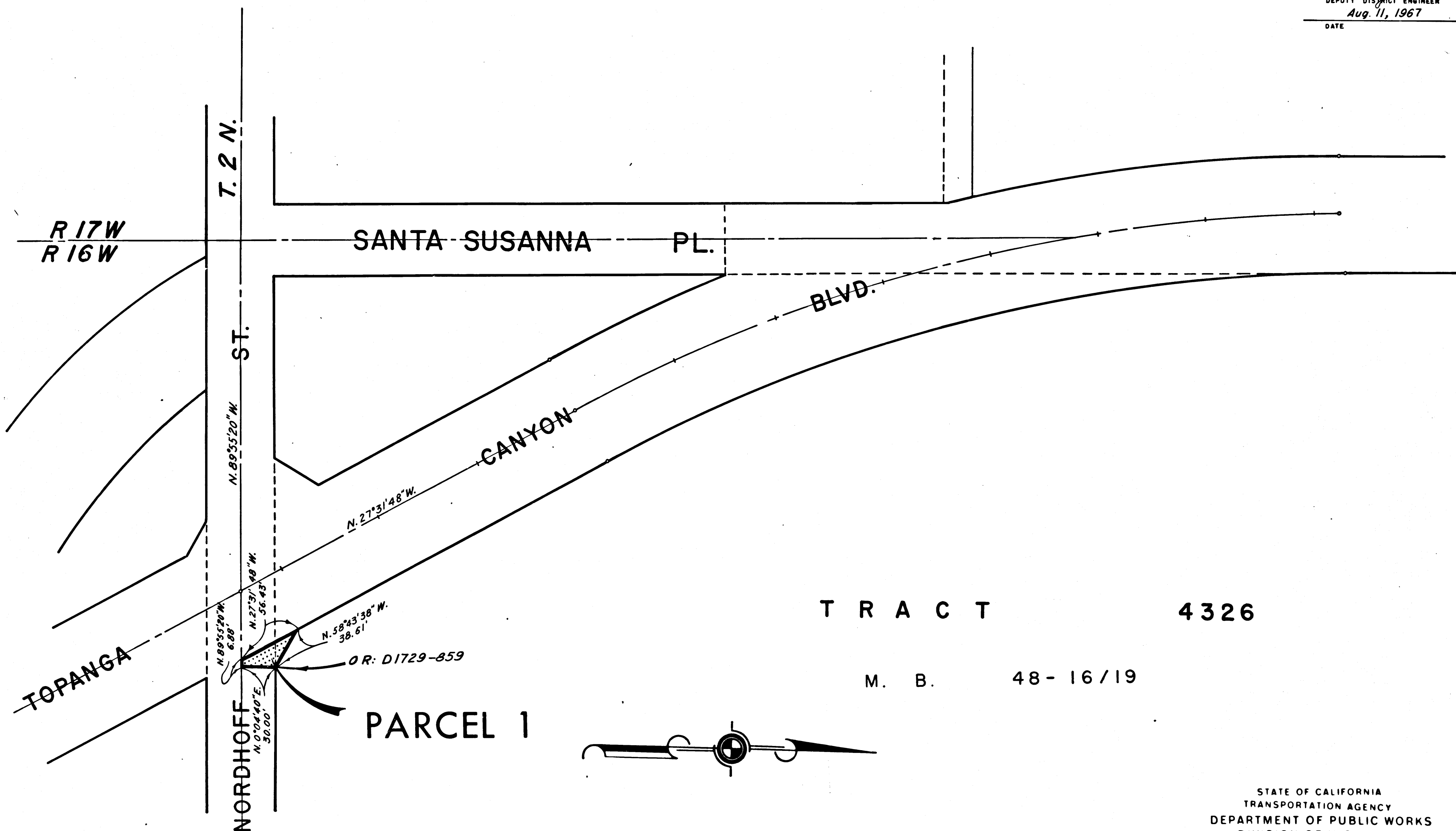
# CITY OF LOS ANGELES

BOOK 6 PAGE 30

FILED WITH LOS ANGELES  
COUNTY RECORDER, RAY E. LEE  
AUG 17 1967

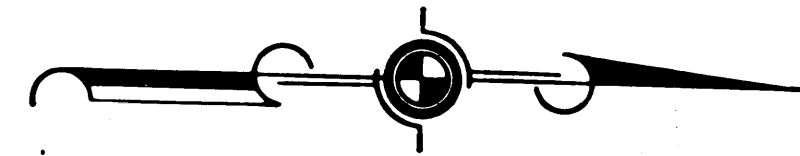
DIST.	COUNTY	ROUTE	POST MILES	SHEET NO.	TOTAL SHEETS
07	LA	27	17.0	2	2

*Autby*  
DEPUTY DISTRICT ENGINEER  
Aug. 11, 1967  
DATE



TRACT 4326

M. B. 48-16/19



REL-629  
DRN BY L.S.  
C'LC BY G.D.W.  
CK'D BY S.L.T.  
BASE MAP NO'S  
6765  
REF. MAP NO'S  
AS BUILT NO'S

STATE OF CALIFORNIA  
TRANSPORTATION AGENCY  
DEPARTMENT OF PUBLIC WORKS  
DIVISION OF HIGHWAYS  
PROPOSED RELINQUISHMENT

AREA TO BE RELINQUISHED SHOWN THUS

