

DIST	COUNTY	ROUTE	POST MILES	SHEET NO.	TOTAL SHEETS
7	L.A.	170	14.5/17.9	1	10

STATE OF CALIFORNIA
 TRANSPORTATION AGENCY
 DEPARTMENT OF PUBLIC WORKS
 DIVISION OF HIGHWAYS

C.W. Harty
 DEPUTY DISTRICT ENGINEER
 DATE Aug. 11, 1967

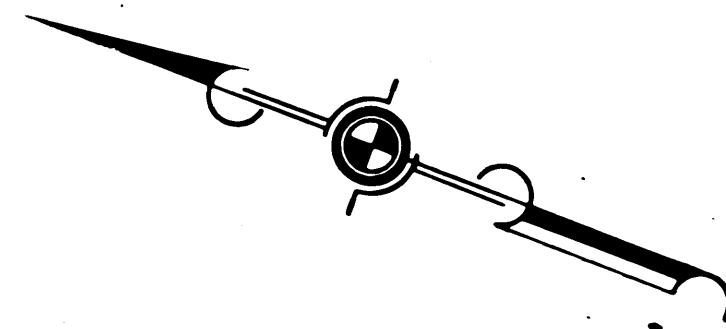
RIGHT OF WAY MAPS OF
STATE HIGHWAY

In the City of Los Angeles between
 Magnolia Blvd. and Vanowen St.

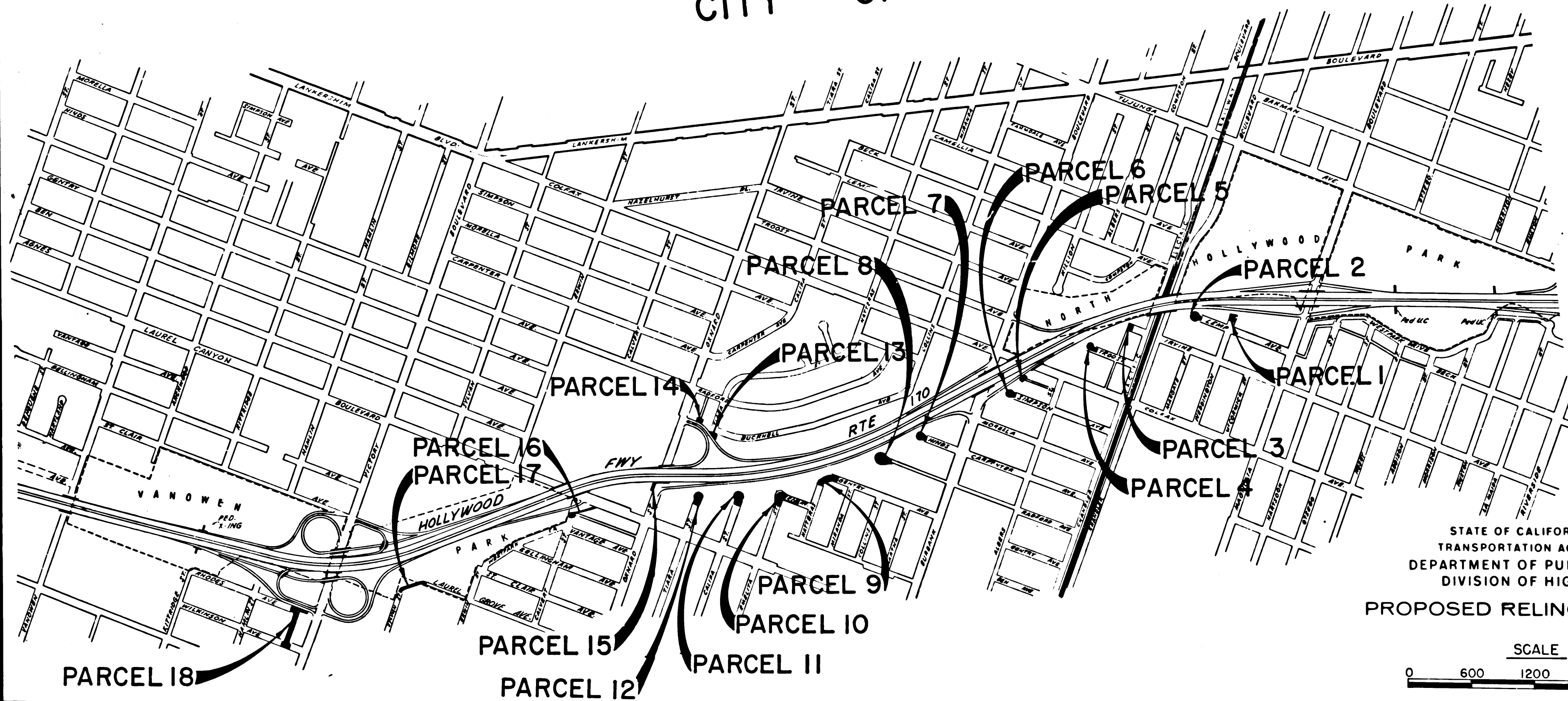
3700

RECORDED
 AT REQUEST OF
 DEPT. OF PUBLIC WORKS
 AUG. 18, 1967
 15 MIN. PAST 2 P.M.

IN BOOK 6
 AT PAGE 31
 OF STATE HIGHWAY MAPS
 LOS ANGELES COUNTY, CALIF.
 RAY E. LEE
 COUNTY RECORDER
 BY *C.W. Harty* Deputy *Free*



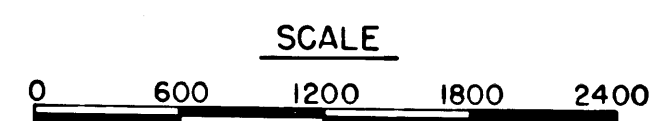
CITY OF LOS ANGELES



6/31-40
 2:15

REL-574
 DRN BY M.A.C.
 C/LC BY M.M.
 CK'D BY S.L.T.
 BASE MAP NO'S
F-1384, F-1385
F-1386
 REF. MAP NO'S
CCM 168.2
 AS BUILT NO'S
163-5

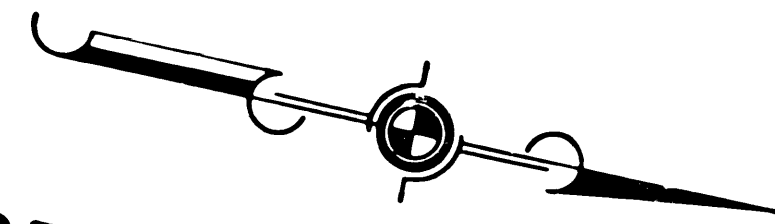
STATE OF CALIFORNIA
 TRANSPORTATION AGENCY
 DEPARTMENT OF PUBLIC WORKS
 DIVISION OF HIGHWAYS
 PROPOSED RELINQUISHMENT



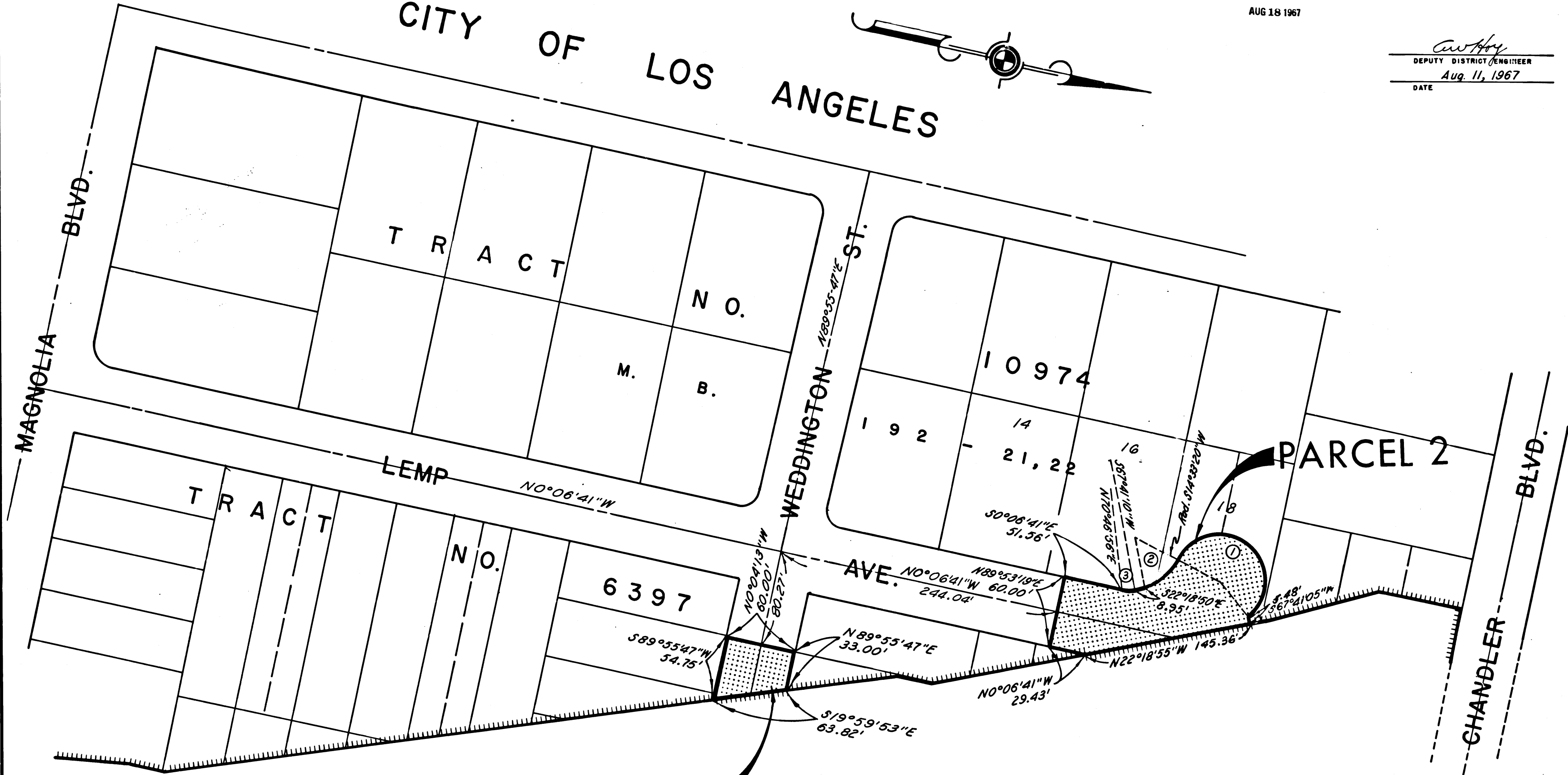
FILED WITH LOS ANGELES COUNTY RECORDER, RAY E. LFE
AUG 18 1967

DIST.	COUNTY	ROUTE	POST MILES	SHEET NO.	TOTAL SHEETS
7	L.A.	170	14.5/17.9	2	10

Anthony
DEPUTY DISTRICT ENGINEER
Aug. 11, 1967
DATE



CITY OF LOS ANGELES



PARCEL 1

PARCEL 2

REL-574
DRN BY M.A.C.
C/LC BY M.M.
CK'D BY S.L.T.
BASE MAP NO'S
F 1384
REF. MAP NO'S
CCM 188.2
AS BUILT NO'S
163-5

HOLLYWOOD F.W.Y. N19°56'19"W RTE. 170

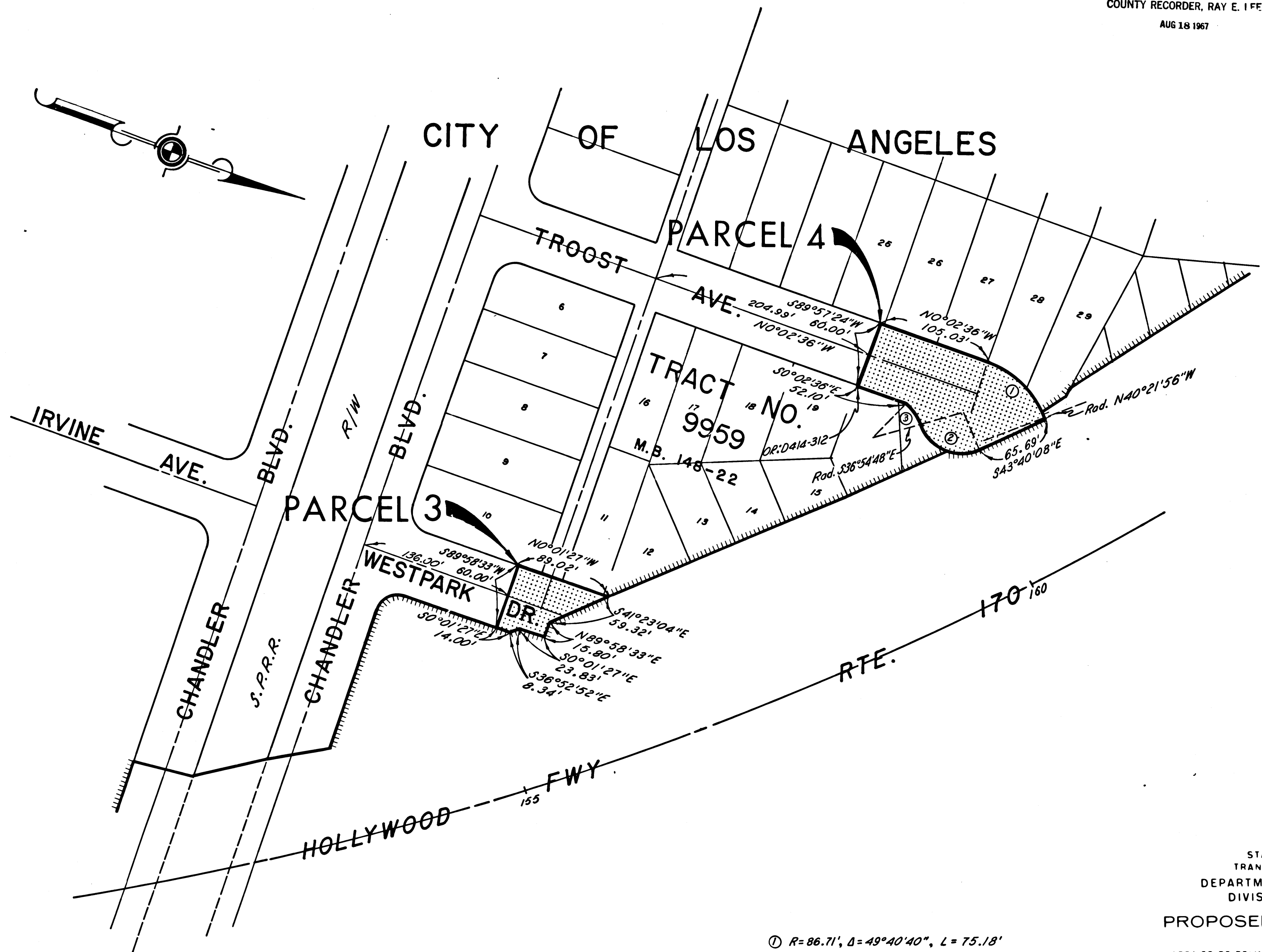
- Curve Data
- ① R=40', Δ=205°45', L=143.65'
 - ② R=45', Δ=53°07'50", L=41.73'
 - ③ R=127', Δ=3°05'46", L=6.86'

STATE OF CALIFORNIA
TRANSPORTATION AGENCY
DEPARTMENT OF PUBLIC WORKS
DIVISION OF HIGHWAYS
PROPOSED RELINQUISHMENT
AREA TO BE RELINQUISHED SHOWN THUS ACCESS PROHIBITED
0 50 100 150 200

FILED WITH LOS ANGELES
COUNTY RECORDER, RAY E. IFF
AUG 18 1967

DIST.	COUNTY ROUTE	POST MILES	SHEET NO.	TOTAL SHEETS
7	L.A. 170	14.5/17.9	3	10

C. W. H. G.
DEPUTY DISTRICT ENGINEER
Aug. 11, 1967
DATE



REL-574
DR'N BY M.A.C.
C'LC BY M.M.
CK'D BY S.L.T.
BASE MAP NO'S
F-1384
REF. MAP NO'S
CCM 168.2
AS BUILT NO'S
163-5

- ① R=86.71', Δ=49°40'40", L=75.18'
- ② R=40.00', Δ=96°45'20", L=67.55'
- ③ R=45.00', Δ=20°44'33", L=18.29'

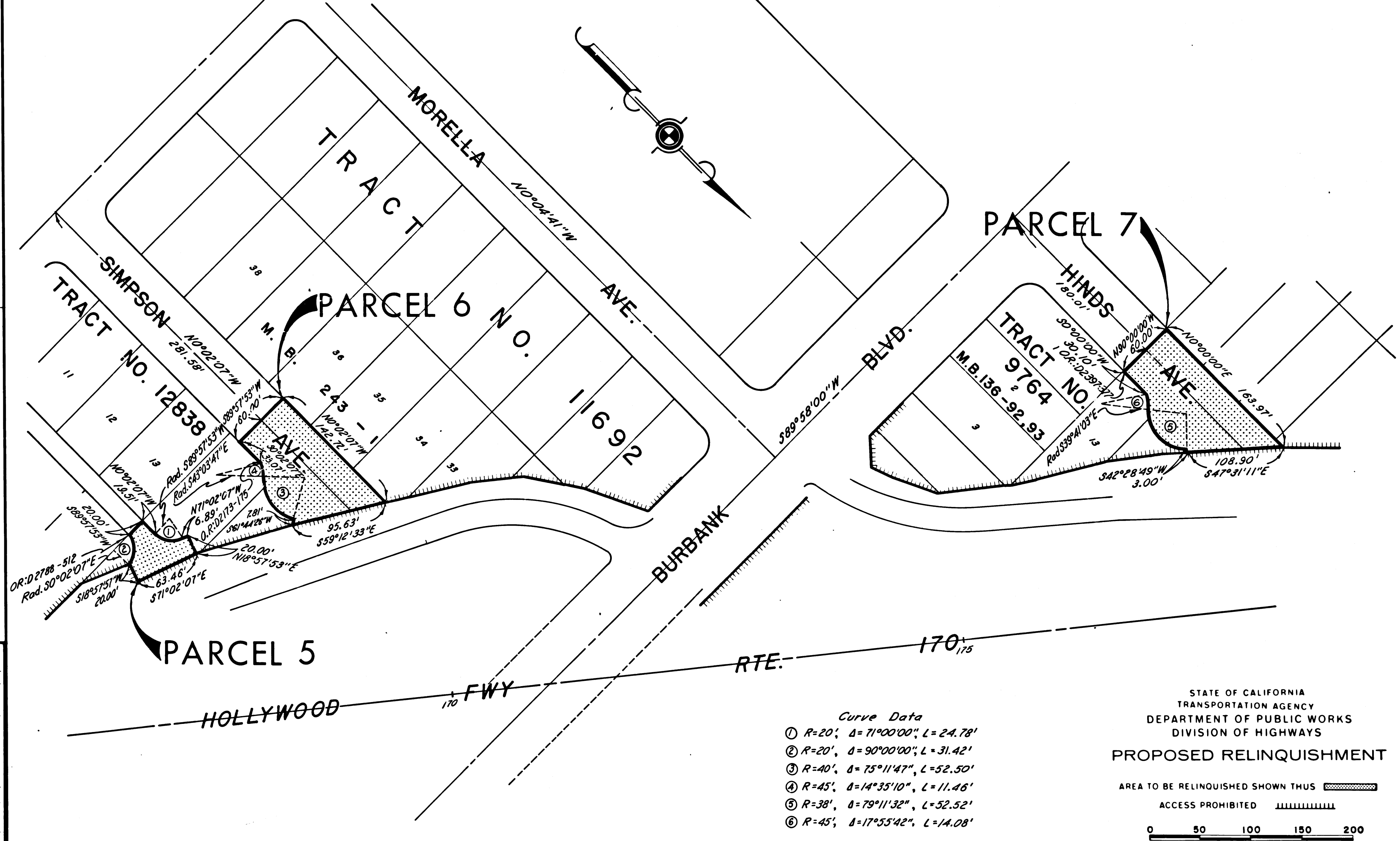
STATE OF CALIFORNIA
TRANSPORTATION AGENCY
DEPARTMENT OF PUBLIC WORKS
DIVISION OF HIGHWAYS
PROPOSED RELINQUISHMENT
AREA TO BE RELINQUISHED SHOWN THUS
ACCESS PROHIBITED
0 50 100 150 200

FILED WITH LOS ANGELES
COUNTY RECORDER, RAY E. LEE
AUG 18 1967

DIST.	COUNTY	ROUTE	POST MILES	SHEET NO.	TOTAL SHEETS
7	L.A.	170	14.5/17.9	4	10

Anthony
DEPUTY DISTRICT ENGINEER
Aug 11, 1967
DATE

CITY OF LOS ANGELES



REL-574
DR'N BY M.A.C.
C'LC BY M.M.
CK'D BY S.L.T.
BASE MAP NO'S
F-1384
F-1385
REF. MAP NO'S
CCM 163-2
AS BUILT NO'S
163-5

Curve Data

①	R=20'	Δ=71°00'00"	L=24.78'
②	R=20'	Δ=90°00'00"	L=31.42'
③	R=40'	Δ=75°11'47"	L=52.50'
④	R=45'	Δ=14°35'10"	L=11.46'
⑤	R=38'	Δ=79°11'32"	L=52.52'
⑥	R=45'	Δ=17°55'42"	L=14.08'

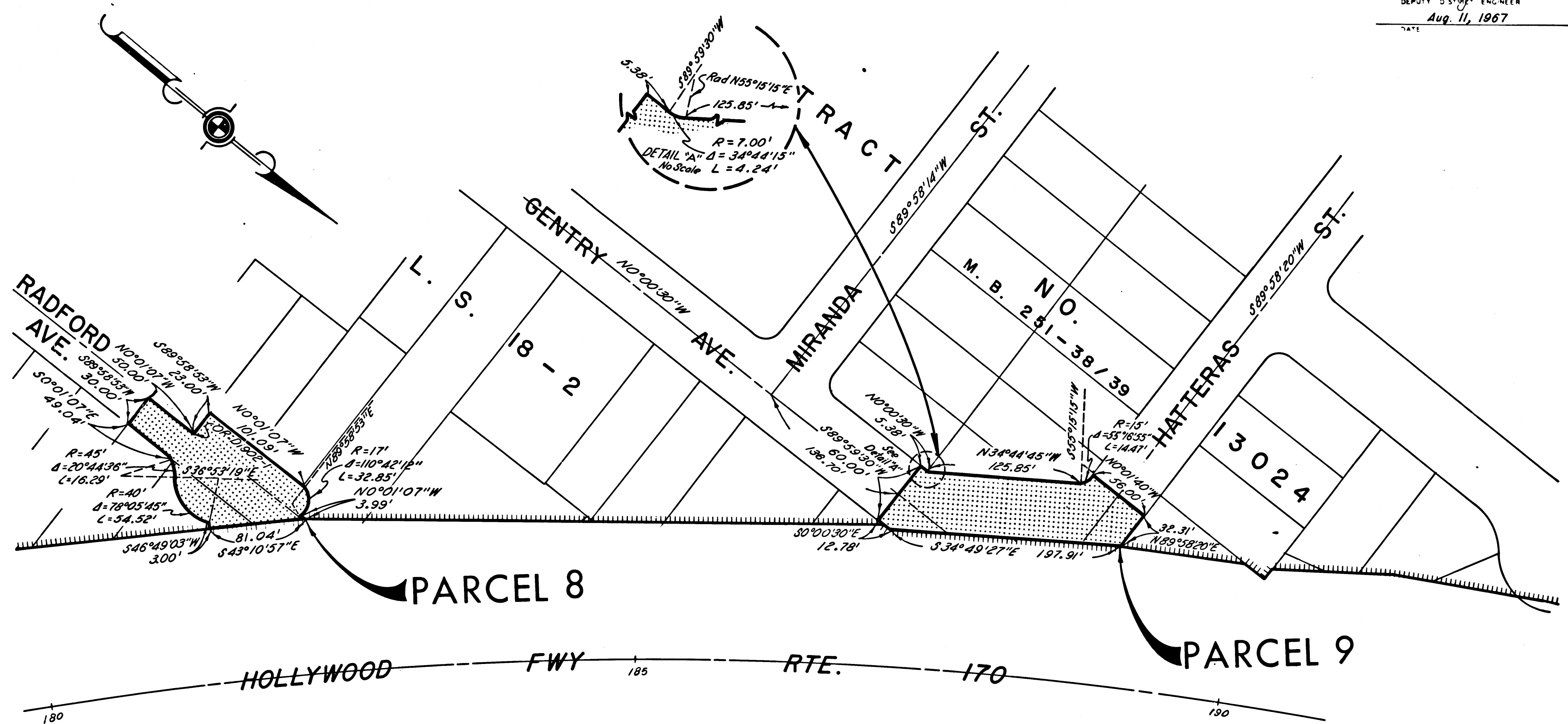
STATE OF CALIFORNIA
TRANSPORTATION AGENCY
DEPARTMENT OF PUBLIC WORKS
DIVISION OF HIGHWAYS
PROPOSED RELINQUISHMENT
AREA TO BE RELINQUISHED SHOWN THUS [stippled pattern]
ACCESS PROHIBITED [hatched pattern]
0 50 100 150 200

CITY OF LOS ANGELES

FILED WITH LOS ANGELES
COUNTY RECORDER, RAY E. LEE
AUG 18 1967

BOOK 6 PAGE 35				
DIST	COUNTY	ROUTE	POST MILES	SHEET TOTAL SHEETS
7	L.A.	170	14.5/17.9	5 / 10

C. W. Hoy
DEPUTY DISTRICT ENGINEER
DATE Aug. 11, 1967



REL-574
DWN BY M.A.C.
C'LC BY M.M.
CK'D BY S.L.T.
BASE MAP NO'S
F-1385
REF. MAP NO'S
CCM 102.8
AS BUILT NO'S
163-5

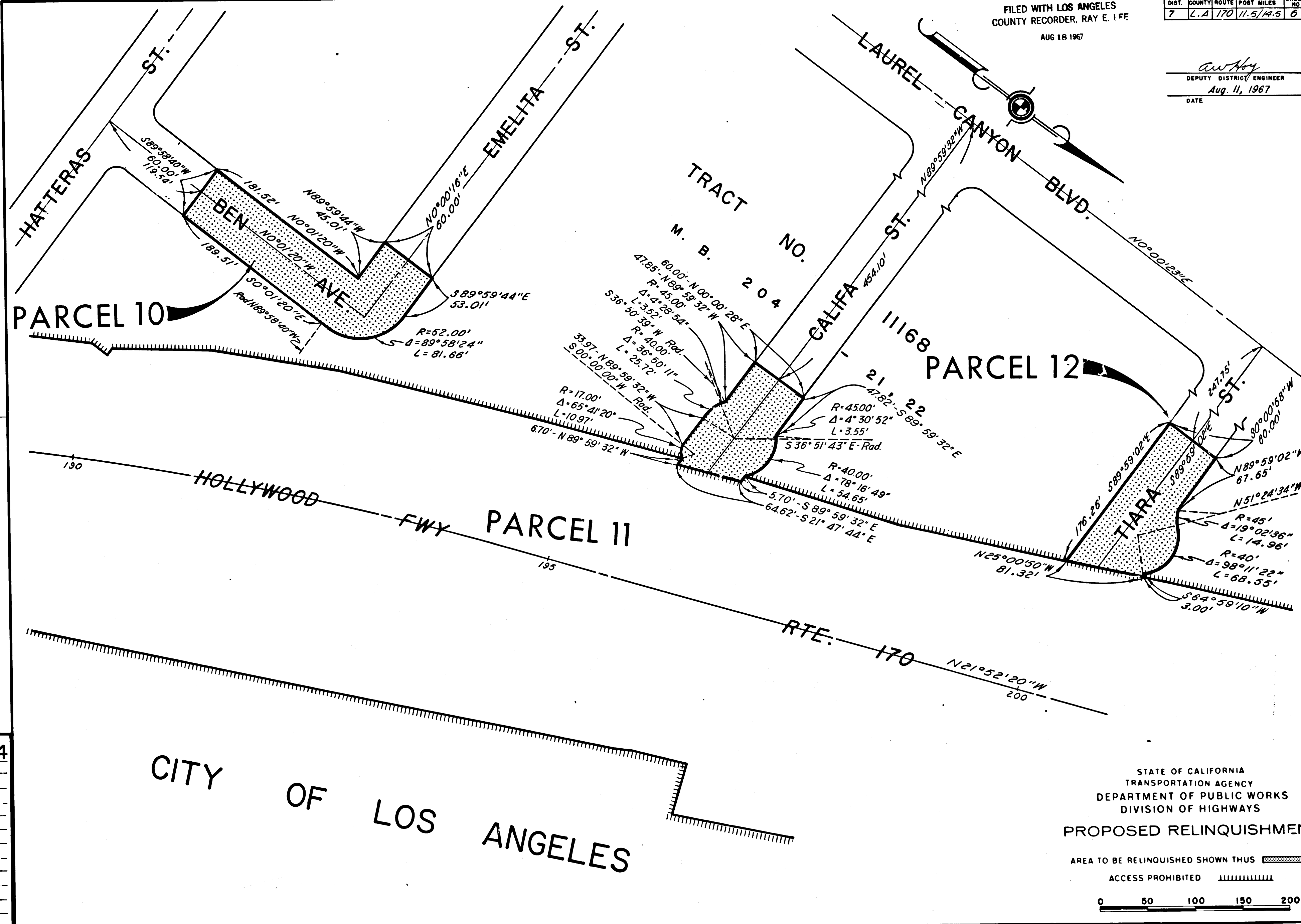
STATE OF CALIFORNIA
TRANSPORTATION AGENCY
DEPARTMENT OF PUBLIC WORKS
DIVISION OF HIGHWAYS
PROPOSED RELINQUISHMENT
AREA TO BE RELINQUISHED SHOWN THUS [stippled pattern]
ACCESS PROHIBITED [hatched pattern]
0 50 100 150 200

FILED WITH LOS ANGELES COUNTY RECORDER, RAY E. IFF

AUG 18 1967

DIST.	COUNTY	ROUTE	POST MILES	SHEET NO.	TOTAL SHEETS
7	L.A.	170	11.5/14.5	6	10

aw Hy
 DEPUTY DISTRICT ENGINEER
 Aug. 11, 1967
 DATE



REL-574
 DRN BY M.A.C.
 C.L.C. BY M.M.
 CK'D BY S.L.T.
 BASE MAP NO'S
 L-1385
 REF. MAP NOS
 AS BUILT NO'S

CITY OF LOS ANGELES

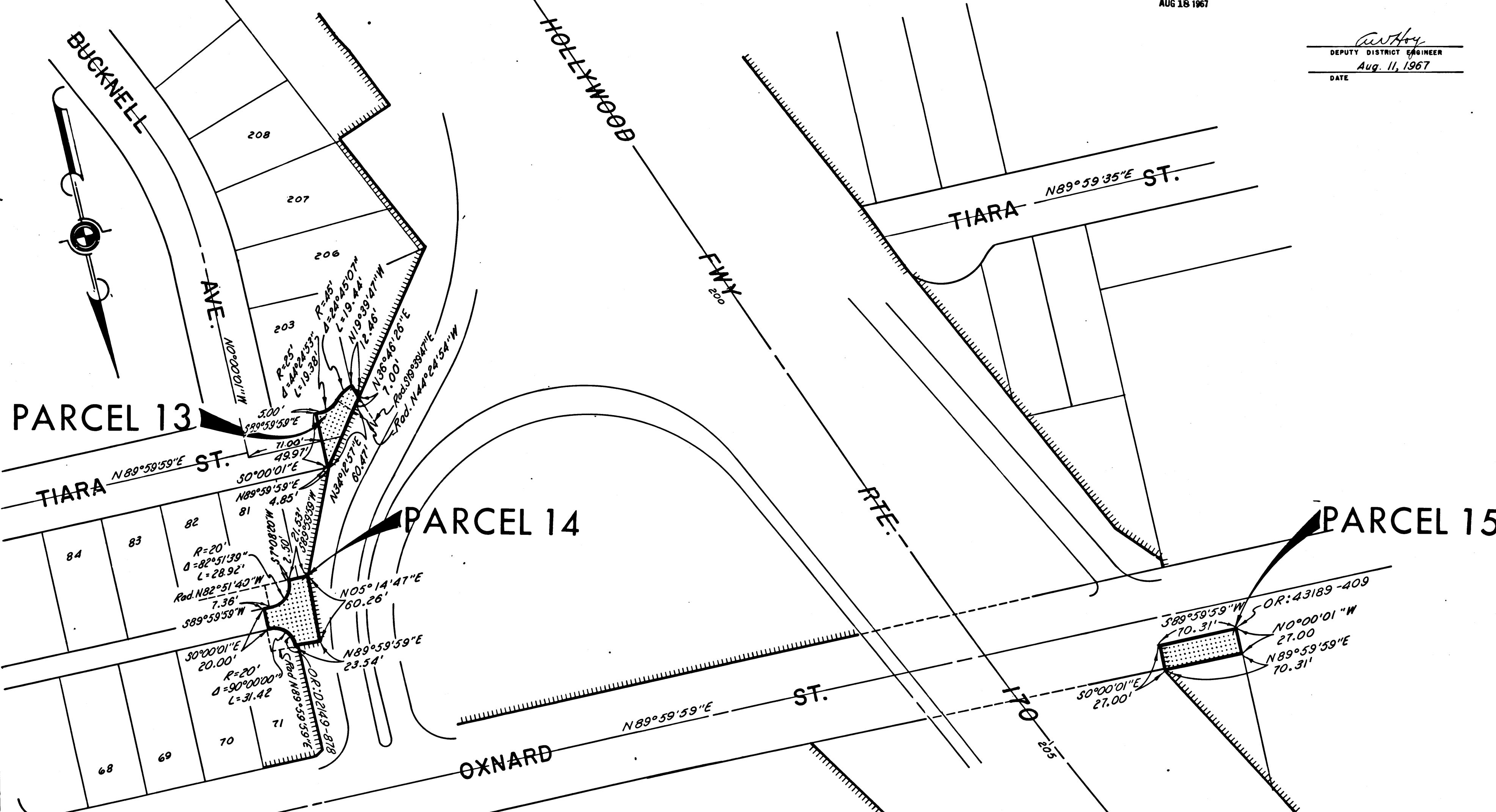
STATE OF CALIFORNIA
 TRANSPORTATION AGENCY
 DEPARTMENT OF PUBLIC WORKS
 DIVISION OF HIGHWAYS
 PROPOSED RELINQUISHMENT
 AREA TO BE RELINQUISHED SHOWN THUS [hatched pattern]
 ACCESS PROHIBITED [dashed line pattern]
 0 50 100 150 200

FILED WITH LOS ANGELES COUNTY RECORDER, RAY E. LEE

AUG 18 1967

DIST.	COUNTY	ROUTE	POST MILES	SHEET NO.	TOTAL SHEETS
7	L.A.	170	4.5/17.9	7	10

W. H. H. H.
 DEPUTY DISTRICT ENGINEER
 Aug. 11, 1967
 DATE



PARCEL 13

PARCEL 14

PARCEL 15

CITY OF LOS ANGELES

STATE OF CALIFORNIA
 TRANSPORTATION AGENCY
 DEPARTMENT OF PUBLIC WORKS
 DIVISION OF HIGHWAYS
 PROPOSED RELINQUISHMENT

AREA TO BE RELINQUISHED SHOWN THUS

ACCESS PROHIBITED

0 50 100 150 200

REL-574
 DRN BY M.A.C.
 C.L.C. BY M.M.
 CK'D BY S.L.T.
 BASE MAP NOS F-1385

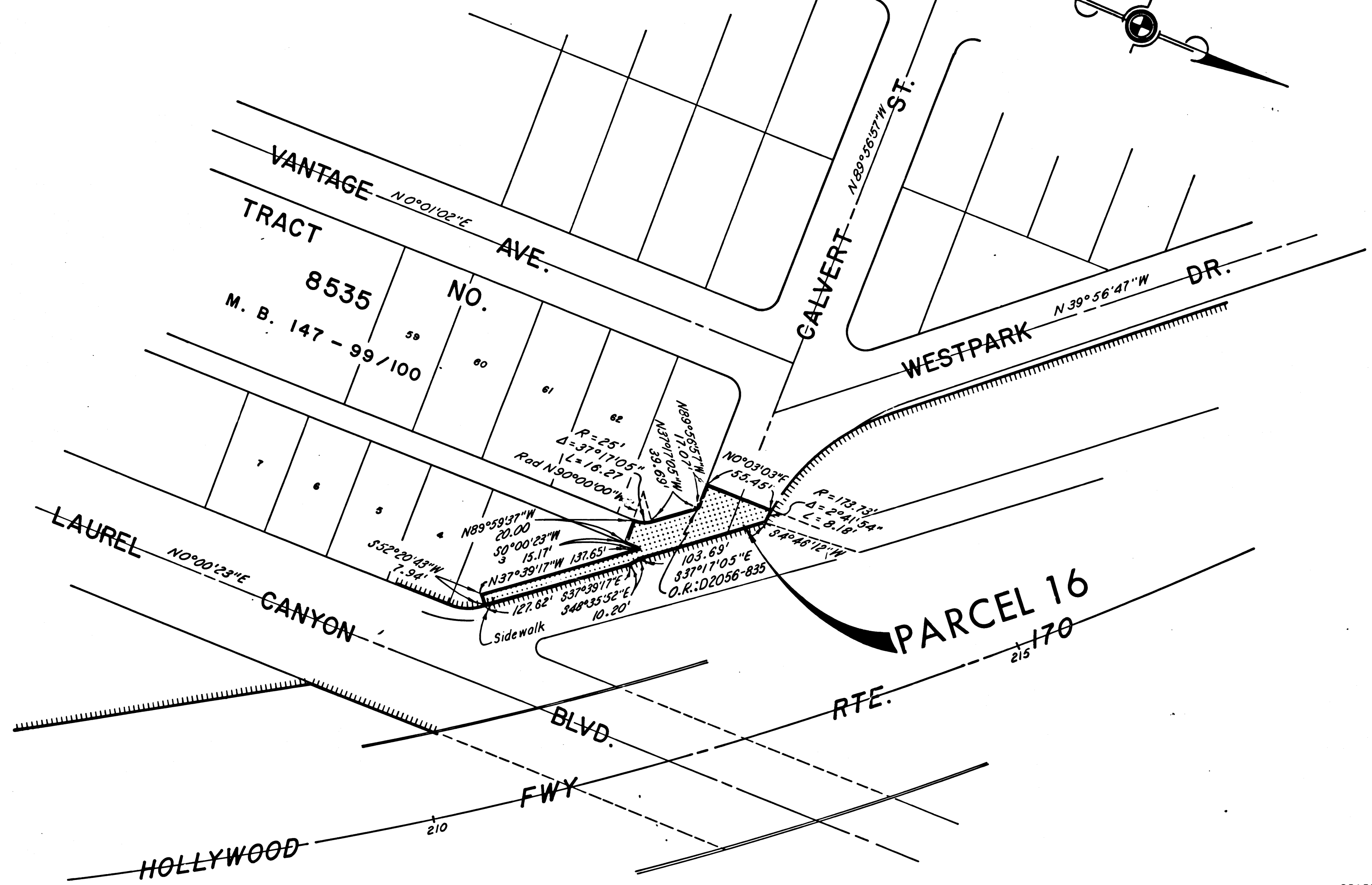
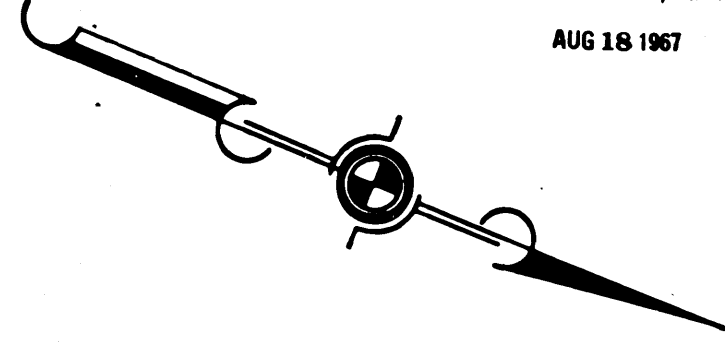
REF. MAP NOS CCM 162.8

AS BUILT NOS 183-5

FILED WITH LOS ANGELES COUNTY RECORDER, RAY E. LEE
AUG 18 1967

DIST	COUNTY	ROUTE	POST MILES	SHEET NO.	TOTAL SHEETS
7	L.A.	170	14.5/17.9	8	10

C. W. Hoy
DEPUTY DISTRICT ENGINEER
Aug. 11, 1967
DATE



REL-574
DRN BY M.A.C.
C'LC BY M.M.
CK'D BY S.L.T.
BASE MAP NO'S
F-1385
REF. MAP NO'S
CCM 162.8
AS BUILT NO'S
163-5

CITY OF LOS ANGELES

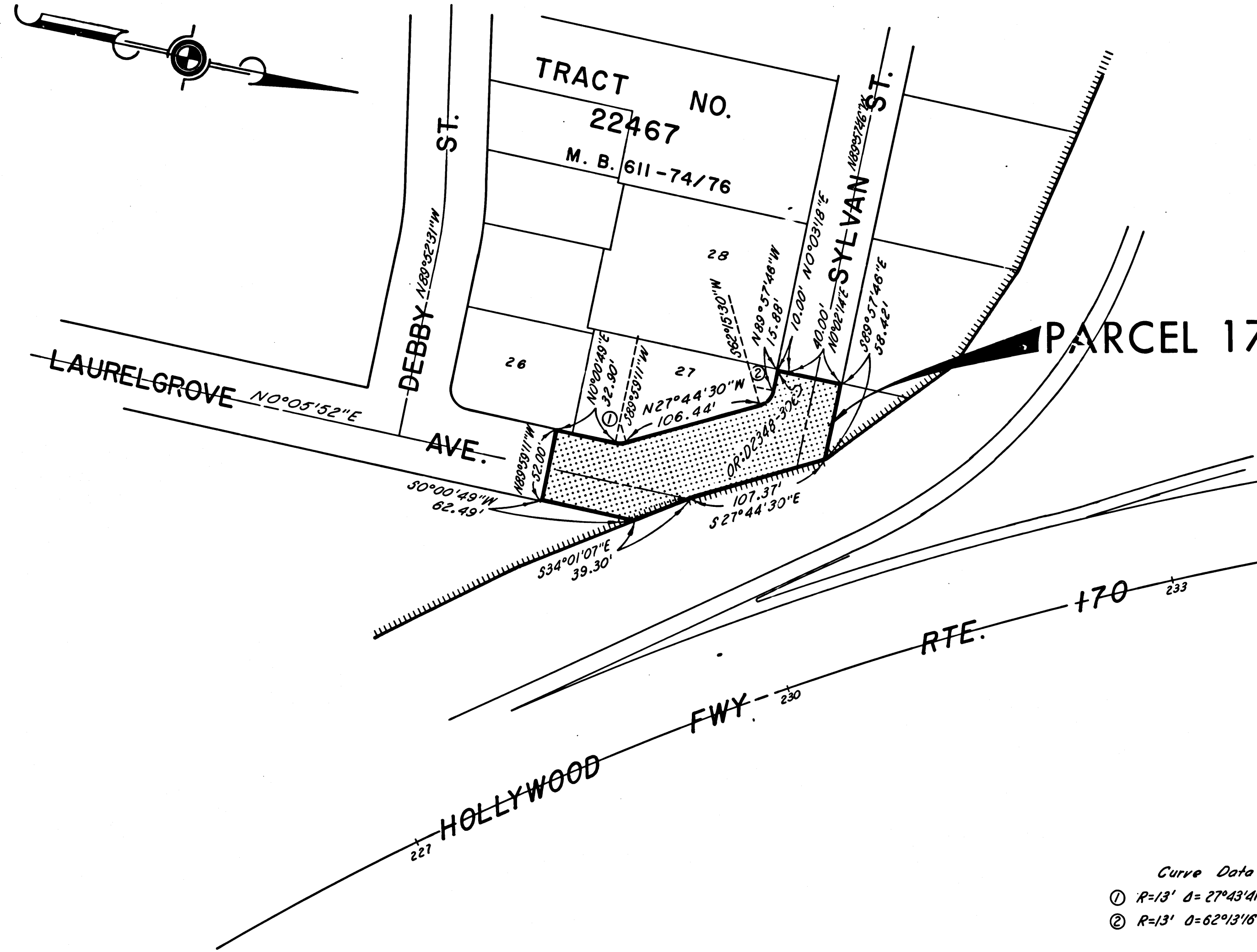
STATE OF CALIFORNIA
TRANSPORTATION AGENCY
DEPARTMENT OF PUBLIC WORKS
DIVISION OF HIGHWAYS
PROPOSED RELINQUISHMENT
AREA TO BE RELINQUISHED SHOWN THUS
ACCESS PROHIBITED
0 50 100 150 200

FILED WITH LOS ANGELES
COUNTY RECORDER, RAY E. LEE
AUG 18 1967

DIST.	COUNTY	ROUTE	POST MILES	SHEET NO.	TOTAL SHEETS
7	L.A.	170	14.5/17.9	9	10

Anthony
DEPUTY DISTRICT ENGINEER
Aug. 11, 1967
DATE

CITY OF LOS ANGELES



REL-574
DR'N BY M.A.C.
C'LC BY M.M.
C'KD BY S.L.T.
BASE MAP NO'S
F-1385
REF. MAP NO'S
CCM 162.B
AS BUILT NO'S
163.-5

Curve Data
① $R=13'$ $\Delta=27^{\circ} 43' 41''$ $L=6.29^{\lambda}$
② $R=13'$ $\Delta=62^{\circ} 13' 16''$ $L=14.12'$

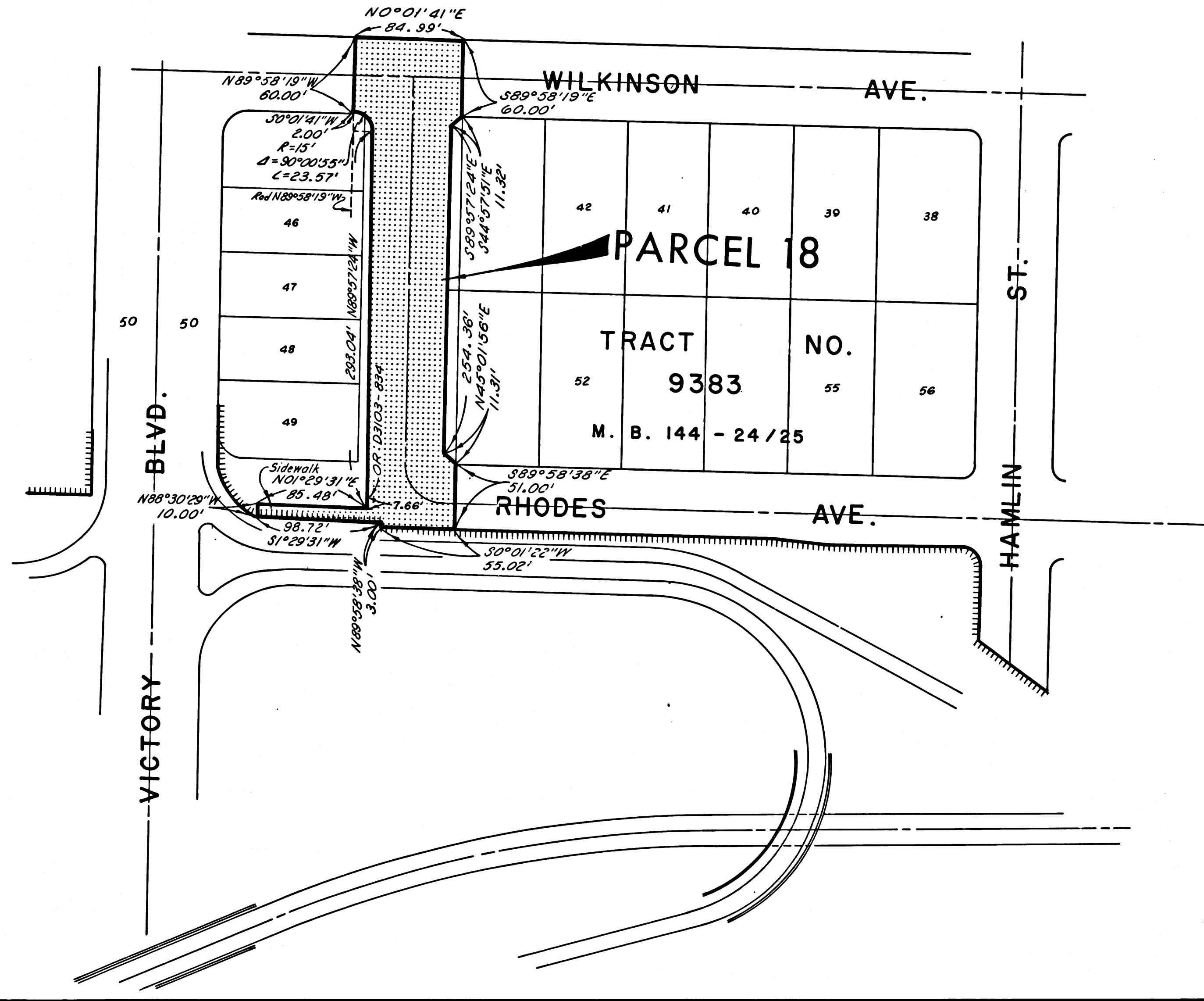
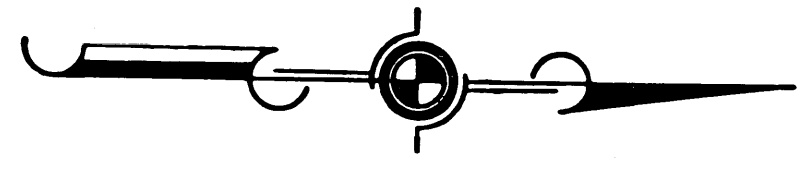
STATE OF CALIFORNIA
TRANSPORTATION AGENCY
DEPARTMENT OF PUBLIC WORKS
DIVISION OF HIGHWAYS
PROPOSED RELINQUISHMENT
AREA TO BE RELINQUISHED SHOWN THUS
ACCESS PROHIBITED
0 50 100 150 200

FILED WITH LOS ANGELES
COUNTY RECORDER, RAY E. LFE
AUG 18 1967

DIST.	COUNTY ROUTE	POST MILES	SHEET NO.	TOTAL SHEETS
7	C.A. 170	14.577.9	10	10

Anthony
DEPUTY DISTRICT ENGINEER
Aug. 11, 1967
DATE

CITY OF LOS ANGELES



REL-574
 DRN BY M.A.C.
 C'LC BY M.M.
 CK'D BY S.L.T.
 BASE MAP NO'S F-1386
 REF. MAP NO'S _____
 AS BUILT NO'S _____

STATE OF CALIFORNIA
 TRANSPORTATION AGENCY
 DEPARTMENT OF PUBLIC WORKS
 DIVISION OF HIGHWAYS

PROPOSED RELINQUISHMENT

AREA TO BE RELINQUISHED SHOWN THUS

ACCESS PROHIBITED

0 50 100 150 200