

DIST.	COUNTY	ROUTE	POST MILES.	SHEET NO.	TOTAL SHEETS
CT	L.A.	101	30.7/30.9	1	2

Anthony
DEPUTY DISTRICT ENGINEER

August 31, 1967
DATE

STATE OF CALIFORNIA
 TRANSPORTATION AGENCY
 DEPARTMENT OF PUBLIC WORKS
 DIVISION OF HIGHWAYS

RIGHT OF WAY MAPS OF
STATE HIGHWAY

In Los Angeles County near
 Las Virgenes Road O.C.

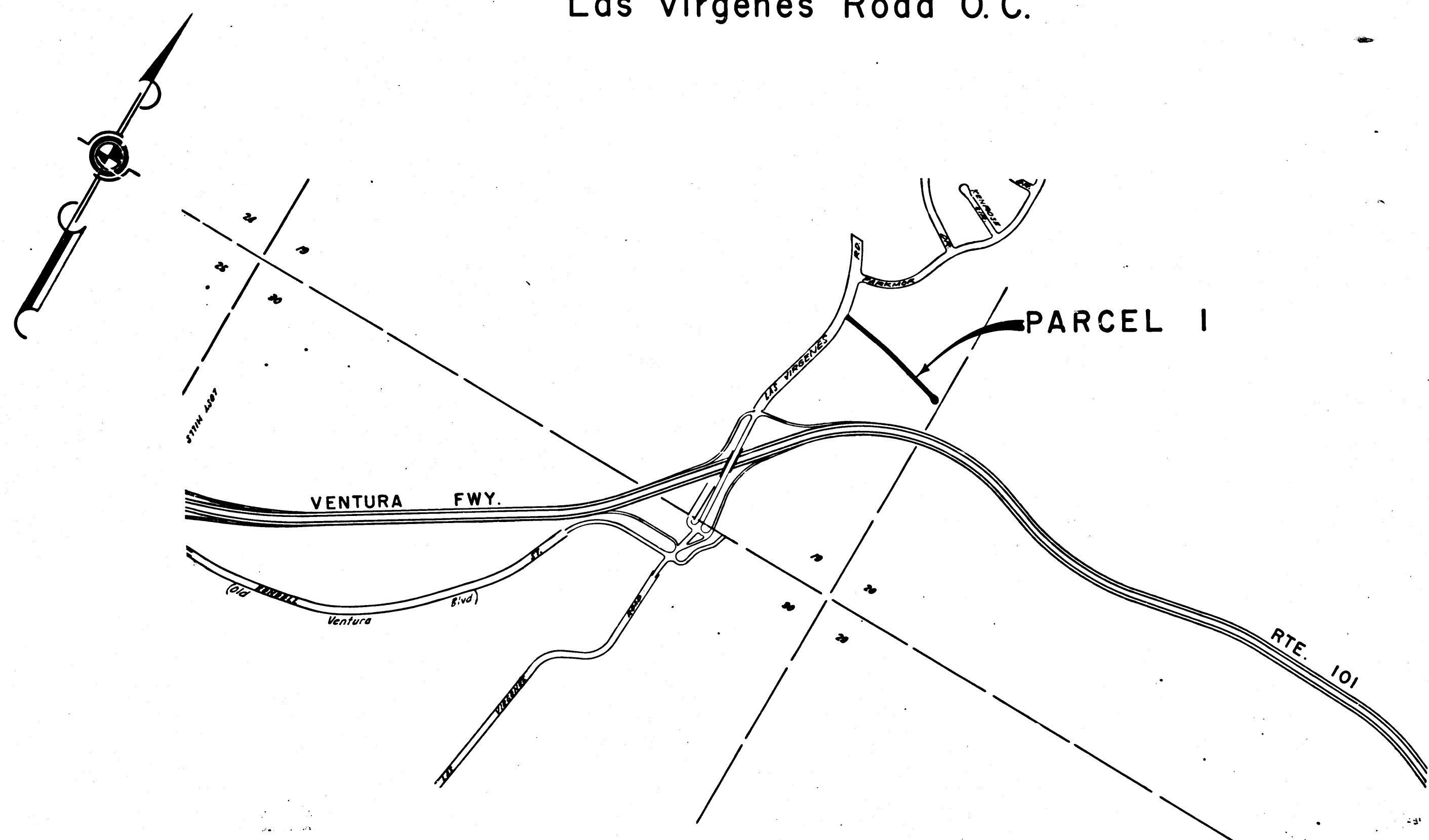
2229

RECORDED
 AT REQUEST OF
 DEPT. OF PUBLIC WORKS
 SEPT. 5, 1967
 57 MIN.
 PAST 10 A.M.

IN BOOK 6
 AT PAGE 43

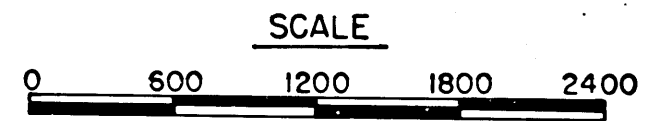
OF STATE HIGHWAY MAPS
 LOS ANGELES COUNTY, CALIF.
 RAY E. LEE
 COUNTY RECORDER

Free
 Deputy



LOS ANGELES COUNTY

STATE OF CALIFORNIA
 TRANSPORTATION AGENCY
 DEPARTMENT OF PUBLIC WORKS
 DIVISION OF HIGHWAYS
PROPOSED RELINQUISHMENT

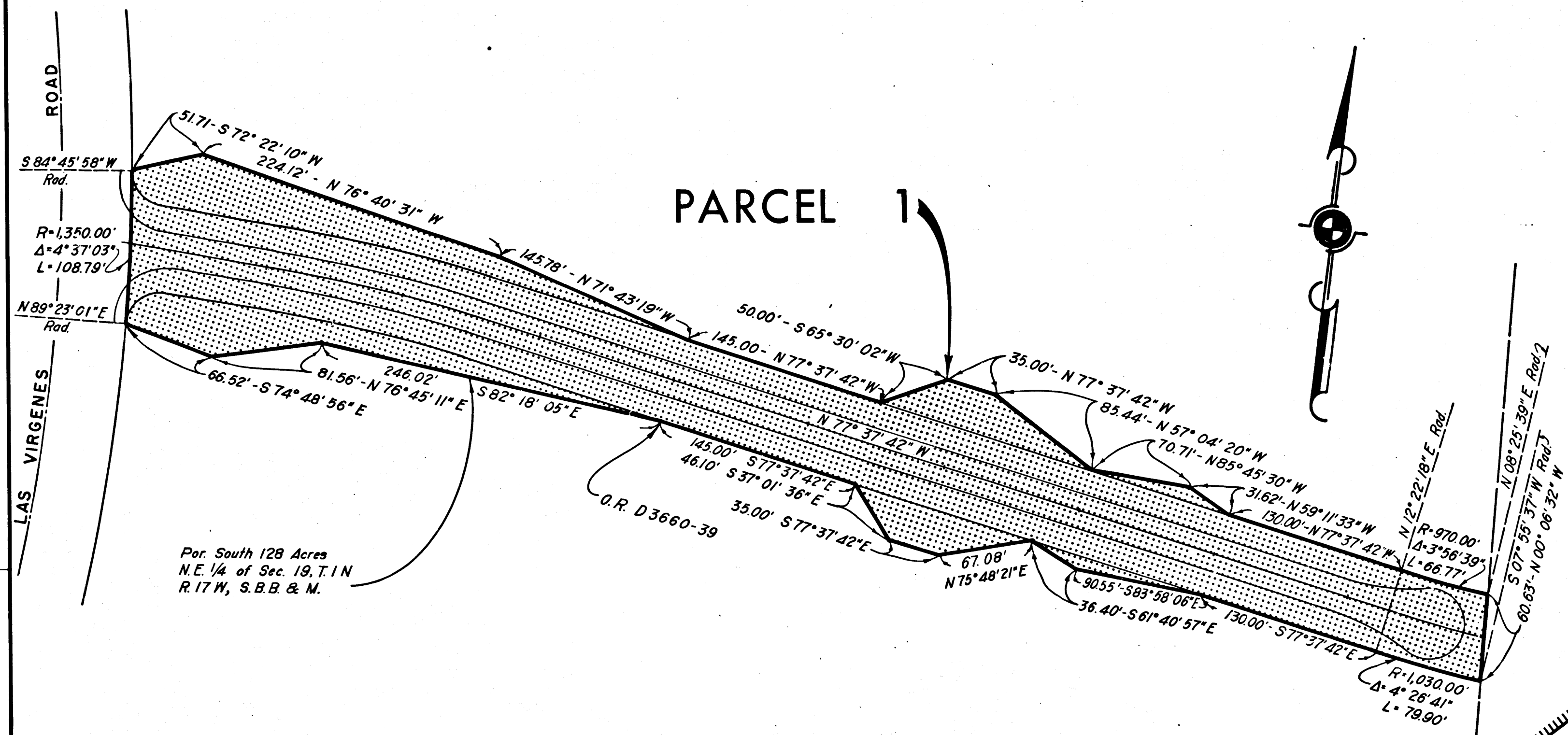


REL-631
 DRN BY L.R.A.
 C.L.C. BY G.D.W.
 C.K'D BY D.L.P.
 BASE MAP NO'S
F-2216
 REF. MAP NOS.
 AS BUILT NO'S
171-11

DIST.	COUNTY	ROUTE	POST MILES	SHEET NO.	TOTAL SHEETS
07	L.A.	101	30.7/30.9	2	2



Anthony
 DEPUTY DISTRICT ENGINEER
 DATE AUGUST 31, 1967

FILED WITH LOS ANGELES
 COUNTY RECORDER, RAY E. LEE
 SEP 5 1967



LOS ANGELES COUNTY

REL-631
 DRN BY L.R.A.
 C.L.C. BY G.D.W.
 CK'D BY D.L.P.
 BASE MAP NO'S
 F-2216
 REF. MAP NO'S
 AS BUILT NO'S
 171-11

STATE OF CALIFORNIA
 TRANSPORTATION AGENCY
 DEPARTMENT OF PUBLIC WORKS
 DIVISION OF HIGHWAYS
PROPOSED RELINQUISHMENT
 AREA TO BE RELINQUISHED SHOWN THUS 
 ACCESS PROHIBITED 
 0 50 100 150 200

