

DIST	COUNTY	ROUTE	POST MILES	SHEET NO.	TOTAL SHEETS
7	L.A.	60	6.2/6.4	1	2

STATE OF CALIFORNIA  
 TRANSPORTATION AGENCY  
 DEPARTMENT OF PUBLIC WORKS  
 DIVISION OF HIGHWAYS

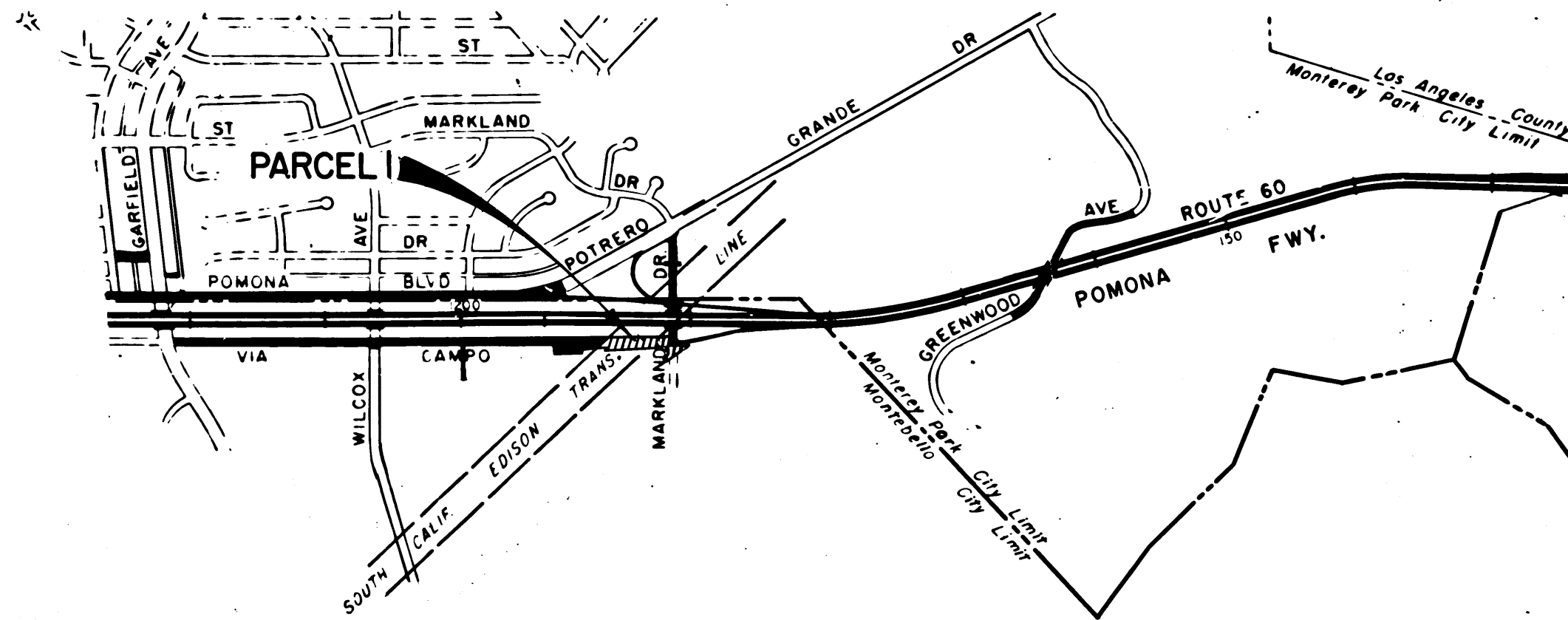
*C.W. Hoy*  
 DEPUTY DISTRICT ENGINEER  
 October 3, 1967  
 DATE

RIGHT OF WAY MAPS OF  
**STATE HIGHWAY**

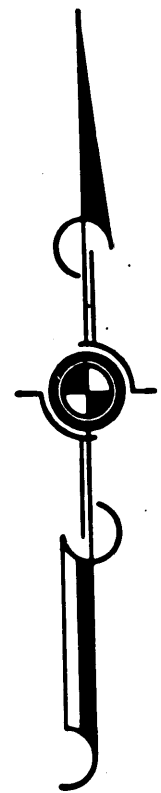
In the City of Montebello at Markland Drive

3172  
 RECORDED  
 AT REQUEST OF  
 DEPT. OF PUBLIC WORKS  
 OCT. 9, 1967  
 MIN. 36 PAST 3 P.M.  
 IN BOOK 6  
 AT PAGE 45  
 OF STATE HIGHWAY MAPS  
 LOS ANGELES COUNTY, CALIF.  
 RAY E. LEE  
 COUNTY RECORDER  
 BY *C.W. Hoy* *FRP*

M O N T E R E Y P A R K

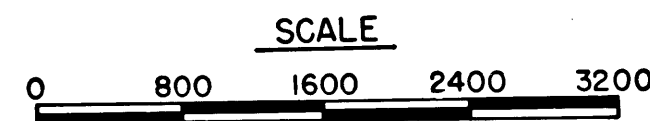


M O N T E B E L L O



6/10-66  
 236

REL- 633  
 DRN BY *M.A.C.*  
 C'LC BY *G.D.W.*  
 CK'D BY *S.L.T.*  
 BASE MAP NO'S *F-1785*  
 REF. MAP NO'S *CC.M.258*  
 AS BUILT NO'S



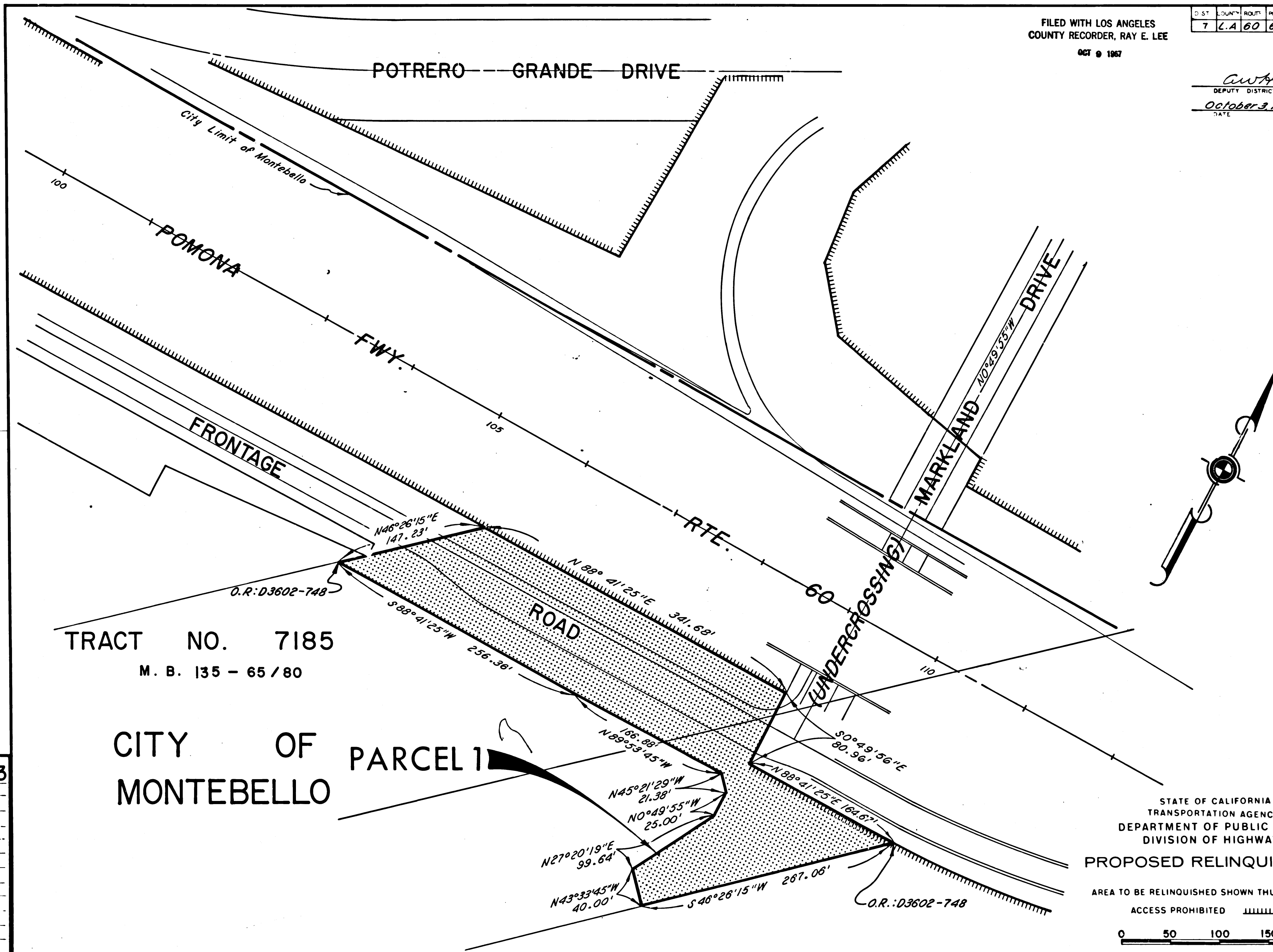
STATE OF CALIFORNIA  
 TRANSPORTATION AGENCY  
 DEPARTMENT OF PUBLIC WORKS  
 DIVISION OF HIGHWAYS  
**PROPOSED RELINQUISHMENT**

FILED WITH LOS ANGELES  
COUNTY RECORDER, RAY E. LEE

OCT 9 1967

DIST.	COUNTY	ROUTE	POST. MILES.	SHEET No.	TOTAL SHEETS
7	L.A.	60	6.2/6.4	2	2

*awhy*  
DEPUTY DISTRICT ENGINEER  
October 3, 1967  
DATE



TRACT NO. 7185  
M. B. 135 - 65 / 80

CITY OF MONTEBELLO  
PARCEL 1

REL- 633  
DRN BY *M.A.C.*  
C.L.C. BY *G.D.W.*  
CK'D BY *S.L.T.*  
BASE MAP NO'S  
*F-1785*  
REF. MAP NO'S  
*C.C.M. 215.8*  
AS BUILT NO'S

STATE OF CALIFORNIA  
TRANSPORTATION AGENCY  
DEPARTMENT OF PUBLIC WORKS  
DIVISION OF HIGHWAYS  
**PROPOSED RELINQUISHMENT**  
AREA TO BE RELINQUISHED SHOWN THUS   
ACCESS PROHIBITED   
0 50 100 150 200