

DIST.	COUNTY	ROUTE	POST MILES.	SHEET NO.	TOTAL SHEETS
07	LA	107	5.5/67	1	2

STATE OF CALIFORNIA
 TRANSPORTATION AGENCY
 DEPARTMENT OF PUBLIC WORKS
 DIVISION OF HIGHWAYS

C. W. Hoy
 DEPUTY DISTRICT ENGINEER
 OCT. 23, 1967
 DATE

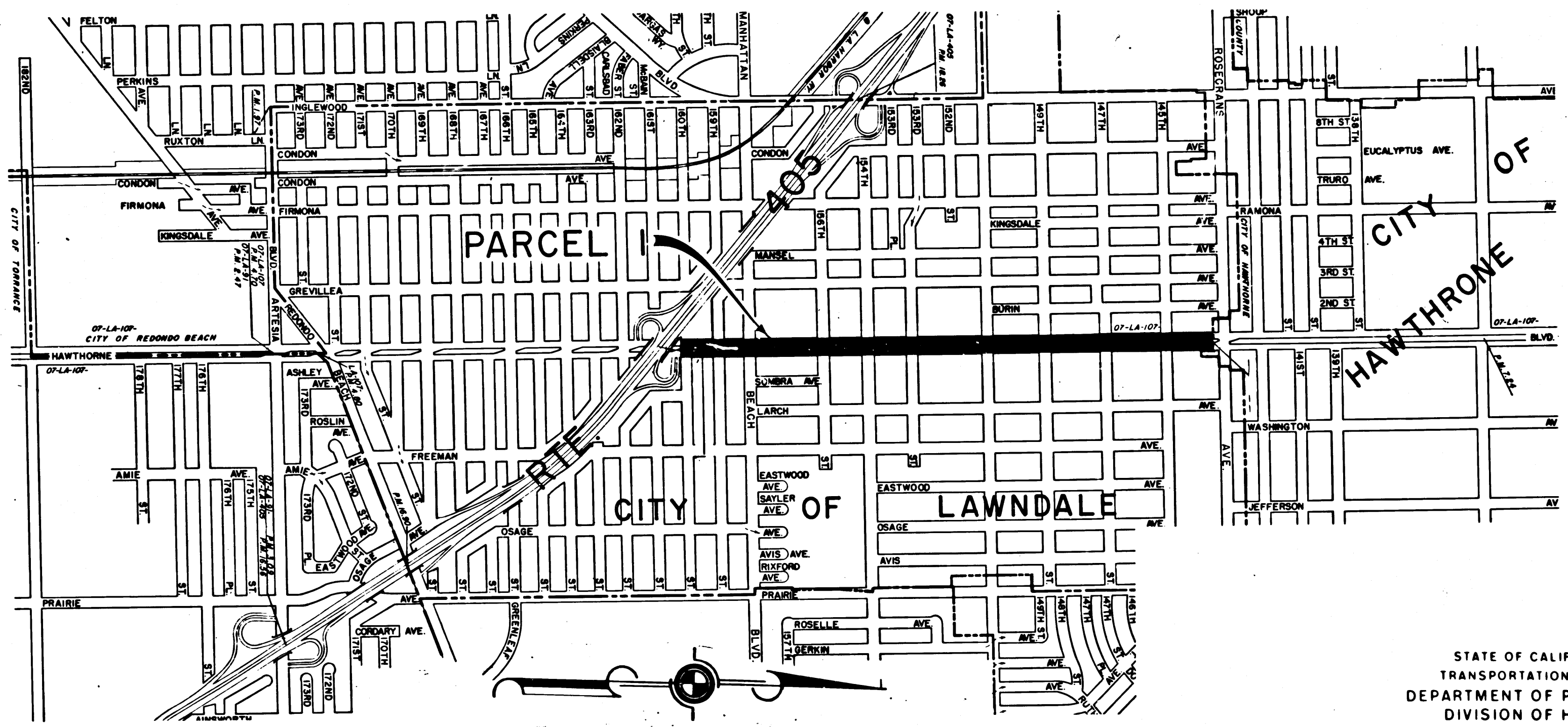
RIGHT OF WAY MAPS OF
STATE HIGHWAY

In the City of Lawndale between
 Route 405 and Rosecrans Avenue

2652

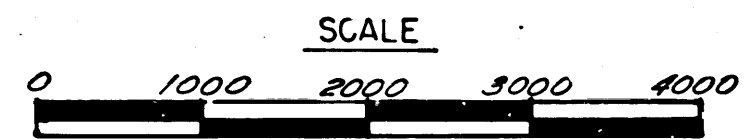
RECORDED
 AT REQUEST OF
 DEPT. OF PUBLIC WORKS
 OCT. 24, 1967
 5:33 MIN. 10 A.M.
 PAST

IN BOOK 6
 AT PAGE 47
 OF STATE HIGHWAY MAPS
 LOS ANGELES COUNTY, CALIF.
 RAY E. LEE
 COUNTY RECORDER
 BY *Chasing* Deputy



REL-455
 DRN BY L.R.A.
 C.L.C. BY D.L.P.
 C.K'D BY S.L.T.
 BASE MAP NO'S
 E 1914 P 26808
 P 26808-1
 REF. MAP NO'S
 AS BUILT NO'S

STATE OF CALIFORNIA
 TRANSPORTATION AGENCY
 DEPARTMENT OF PUBLIC WORKS
 DIVISION OF HIGHWAYS
PROPOSED RELINQUISHMENT

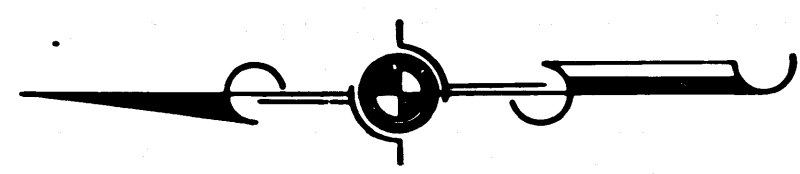
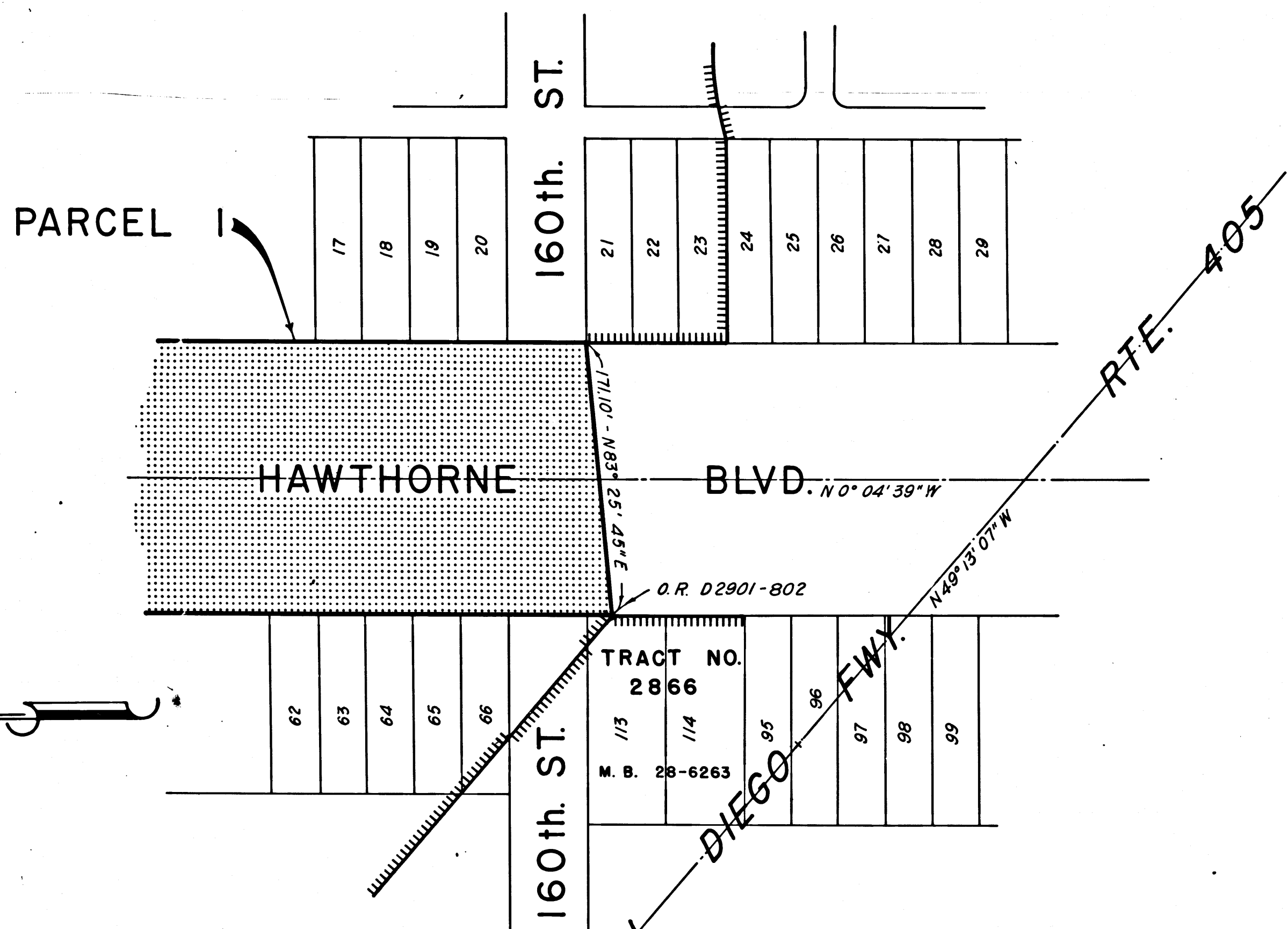


DIST.	COUNTY	ROUTE	POST MILES	SHEET NO.	TOTAL SHEETS
07	LA	107	3.3/6.7	2	2

FILED WITH LOS ANGELES COUNTY RECORDER, RAY E. LEE

OCT 24 1967

aw Hoy
 DEPUTY DISTRICT ENGINEER
 OCT. 23, 1967
 DATE



REL-455
 DRN BY L.R.A.
 C'LC BY D.L.P.
 CK'D BY S.L.T.
 BASE MAP NO'S E-191A
 REF. MAP NO'S _____
 AS BUILT NO'S _____

CITY OF LAWNSDALE

STATE OF CALIFORNIA
 TRANSPORTATION AGENCY
 DEPARTMENT OF PUBLIC WORKS
 DIVISION OF HIGHWAYS
 PROPOSED RELINQUISHMENT

AREA TO BE RELINQUISHED SHOWN THUS

ACCESS PROHIBITED

0 50 100 150 200