

DIST.	COUNTY	ROUTE	POST MILES	SHEET No.	TOTAL SHEETS
07	LA	163	0.1/3.3	1	3

STATE OF CALIFORNIA
 TRANSPORTATION AGENCY
 DEPARTMENT OF PUBLIC WORKS
 DIVISION OF HIGHWAYS

Anthony
 DEPUTY DISTRICT ENGINEER
 Oct. 30, 1967
 DATE

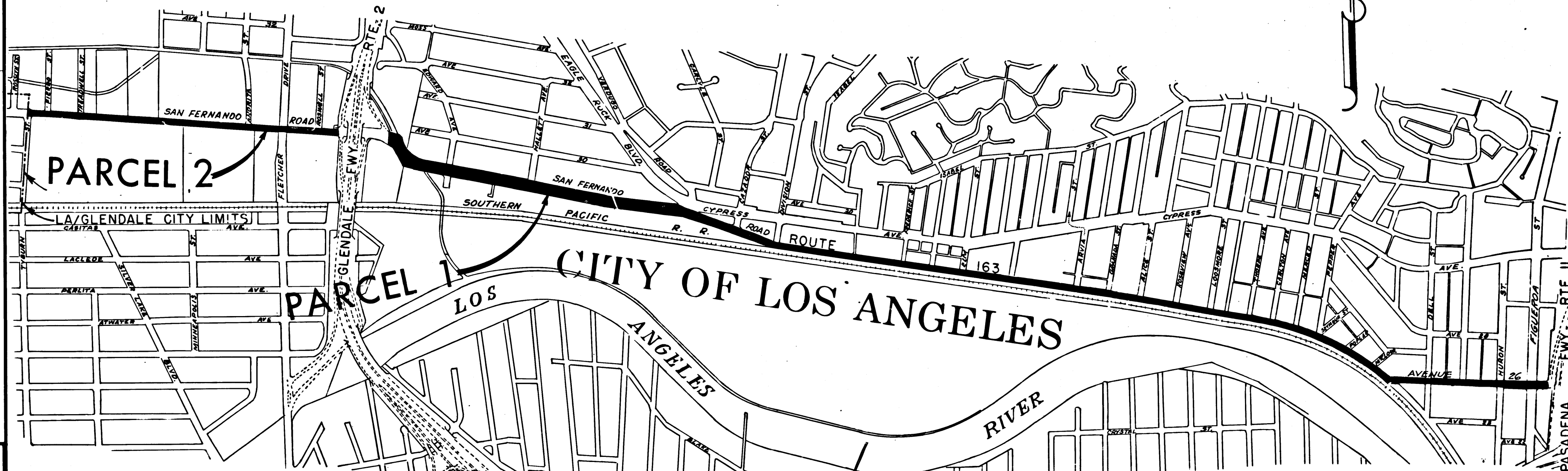
RIGHT OF WAY MAPS OF
STATE HIGHWAY

AVENUE 26 & SAN FERNANDO ROAD IN THE CITY OF LOS ANGELES
 BETWEEN THE PASADENA FREEWAY & TYBURN STREET

3730

RECORDED
 AT REQUEST OF
 DEPT. OF PUBLIC WORKS
 OCT. 31, 1967
 52 PM
 PART 12 P.M.

IN BOOK 6
 AT PAGE 49
 OF STATE HIGHWAY MAPS
 LOS ANGELES COUNTY, CALIF.
 RAY E. LEB
 COUNTY RECORDER
 BY *[Signature]* *Free*



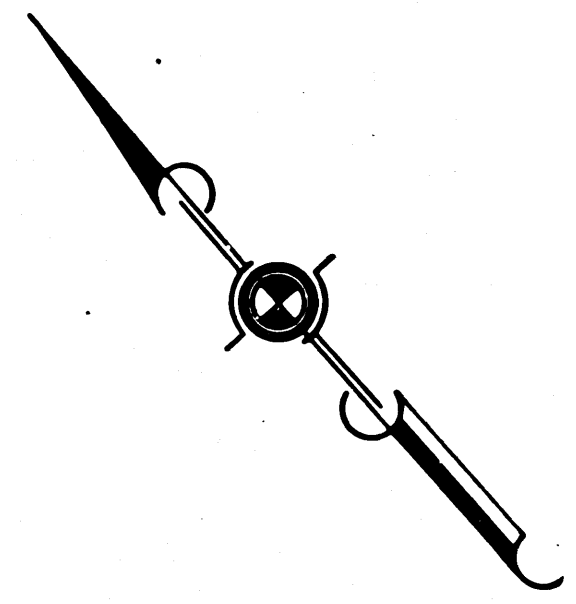
REL- 451
 DRN BY *BSD*
 C'LC BY *RSD*
 CK'D BY *GDM*
 BASE MAP NO'S
F 1765
P 42/3
 REF. MAP NO'S
 AS BUILT NO'S

STATE OF CALIFORNIA
 TRANSPORTATION AGENCY
 DEPARTMENT OF PUBLIC WORKS
 DIVISION OF HIGHWAYS
PROPOSED RELINQUISHMENT

AREA TO BE RELINQUISHED SHOWN THUS



CITY OF LOS ANGELES

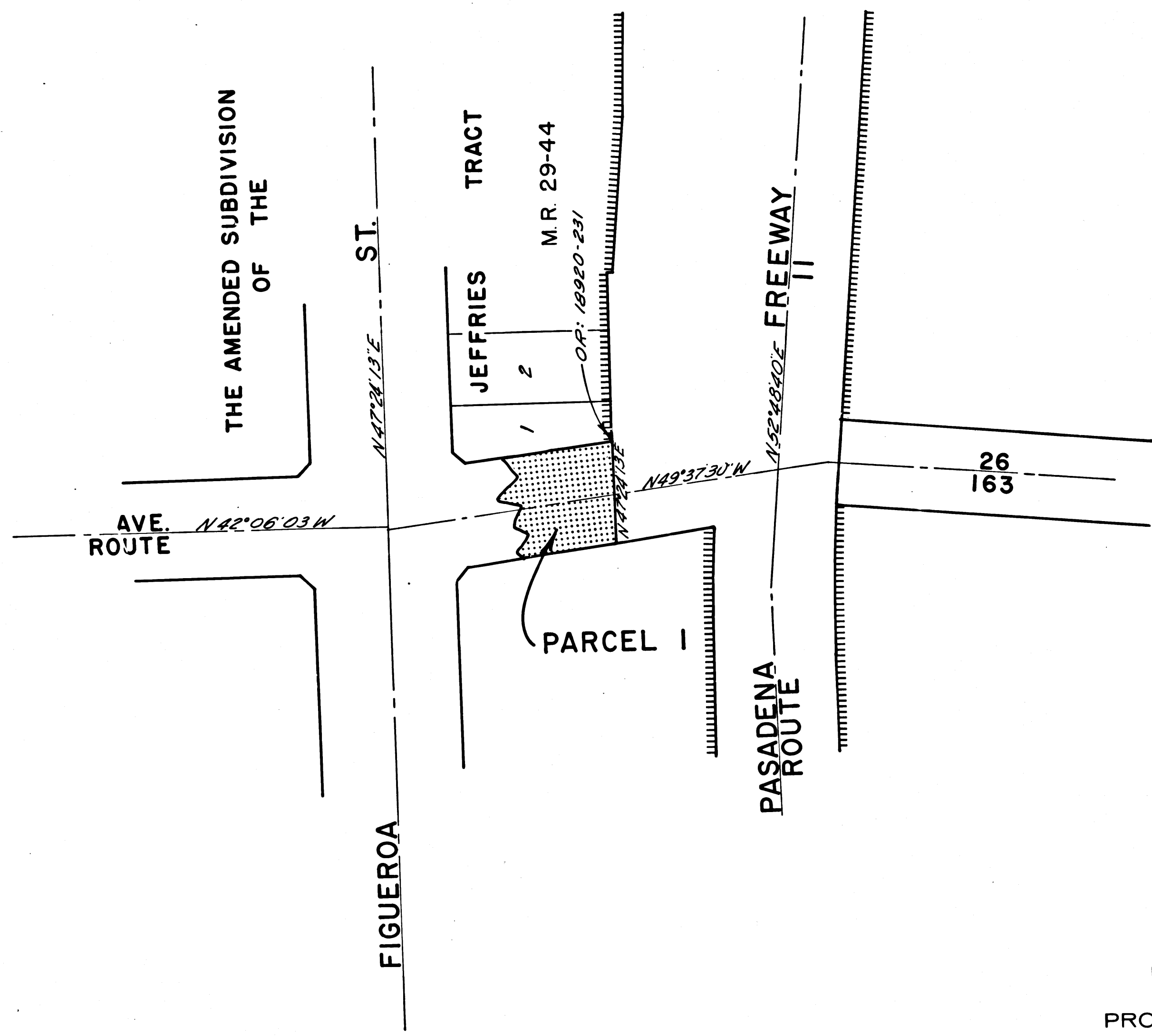


FILED WITH LOS ANGELES
COUNTY RECORDER, RAY E. LEE

OCT 31 1967

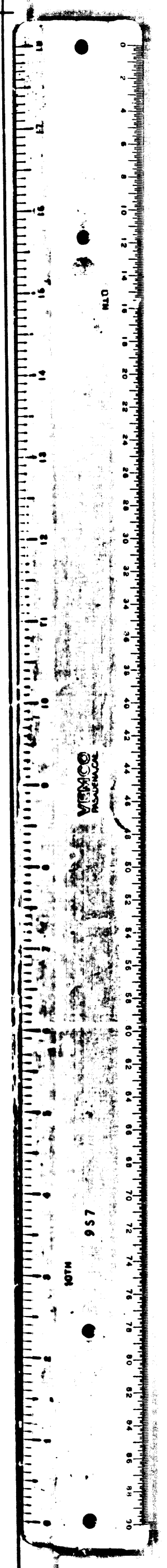
DIST.	COUNTY	ROUTE	POST MILES	SHEET NO.	TOTAL SHEETS
7	LA	163	0.1/3.3	2	3

C. W. Hoy
DEPUTY DISTRICT ENGINEER
DATE Oct. 30, 1967



REL-451
DRN BY D.L.P.
C'LC BY S.L.T.
CK'D BY G.W.
BASE MAP NO'S
F-1765
REF. MAP NO'S
AS BUILT NO'S
135-3
155-1

STATE OF CALIFORNIA
TRANSPORTATION AGENCY
DEPARTMENT OF PUBLIC WORKS
DIVISION OF HIGHWAYS
PROPOSED RELINQUISHMENT
AREA TO BE RELINQUISHED SHOWN THUS
ACCESS PROHIBITED
0 50 100 150 200

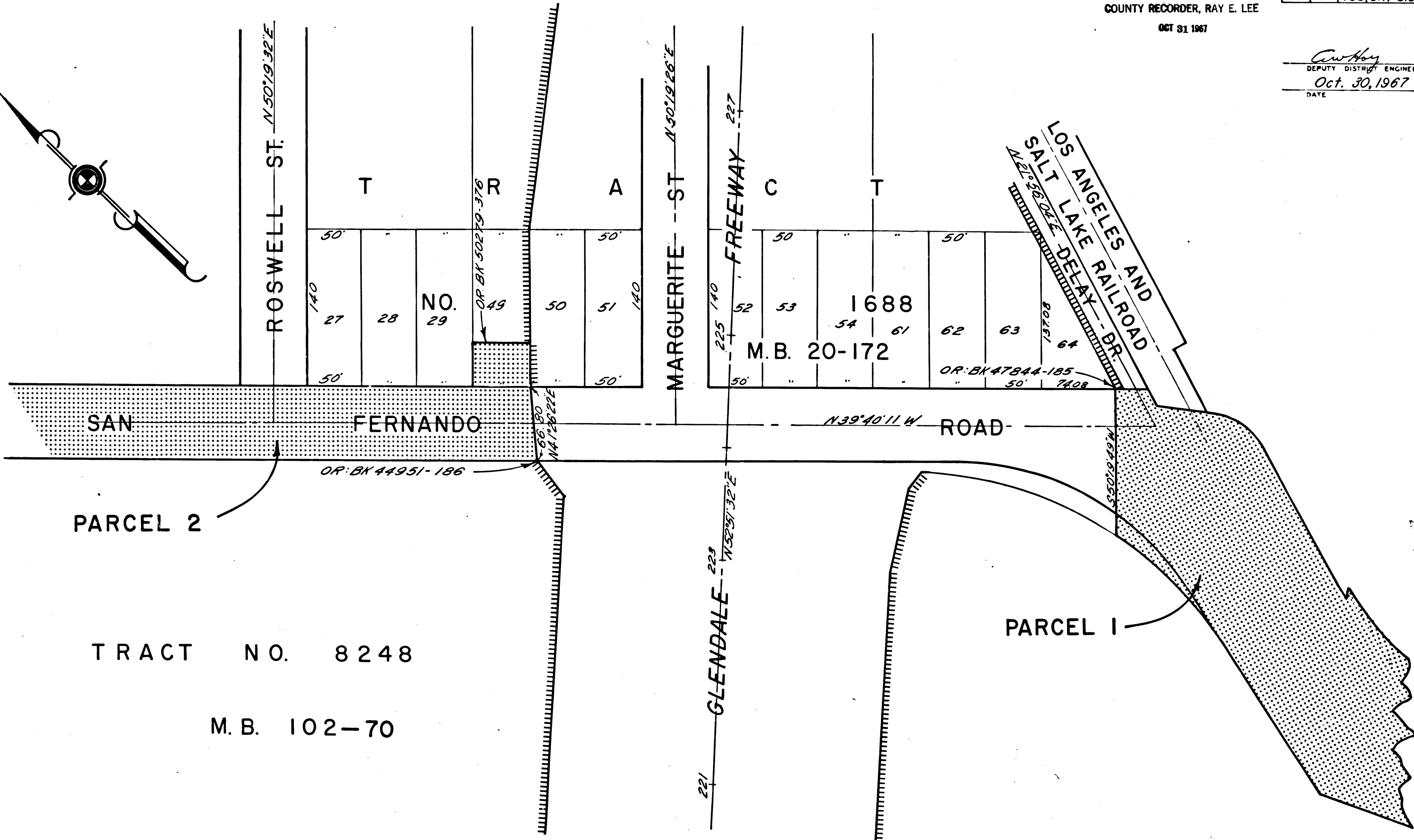
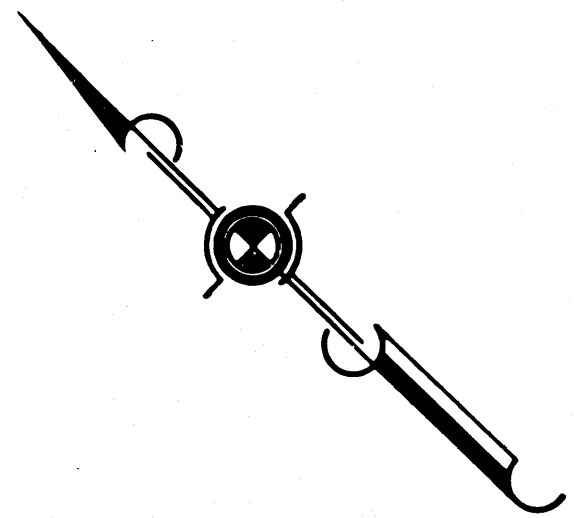


FILED WITH LOS ANGELES COUNTY RECORDER, RAY E. LEE

OCT 31 1967

DIST.	COUNTY	ROUTE	POST MILES	SHEET No.	TOTAL SHEETS
7	LA	163	0.1/3.3	3	3

Anthony
 DEPUTY DISTRICT ENGINEER
 Oct. 30, 1967
 DATE



PARCEL 2

TRACT NO. 8248

M. B. 102-70

PARCEL 1

CITY OF LOS ANGELES

REL-451
 DRN BY *D.L.P.*
 C.L.C. BY *S.L.T.*
 CK'D BY *G.D.W.*
 BASE MAP NO'S
E-1165
E-1266
 REF. MAP NO'S
CCM 180.6
 AS BUILT NO'S
135-3
155-1

STATE OF CALIFORNIA
 TRANSPORTATION AGENCY
 DEPARTMENT OF PUBLIC WORKS
 DIVISION OF HIGHWAYS
PROPOSED RELINQUISHMENT

