

DIST	COUNTY	ROUTE	POST MILES	SHEET No.	TOTAL SHEETS
07	LA.	163	3.3/5.2	1	2

STATE OF CALIFORNIA
 TRANSPORTATION AGENCY
 DEPARTMENT OF PUBLIC WORKS
 DIVISION OF HIGHWAYS

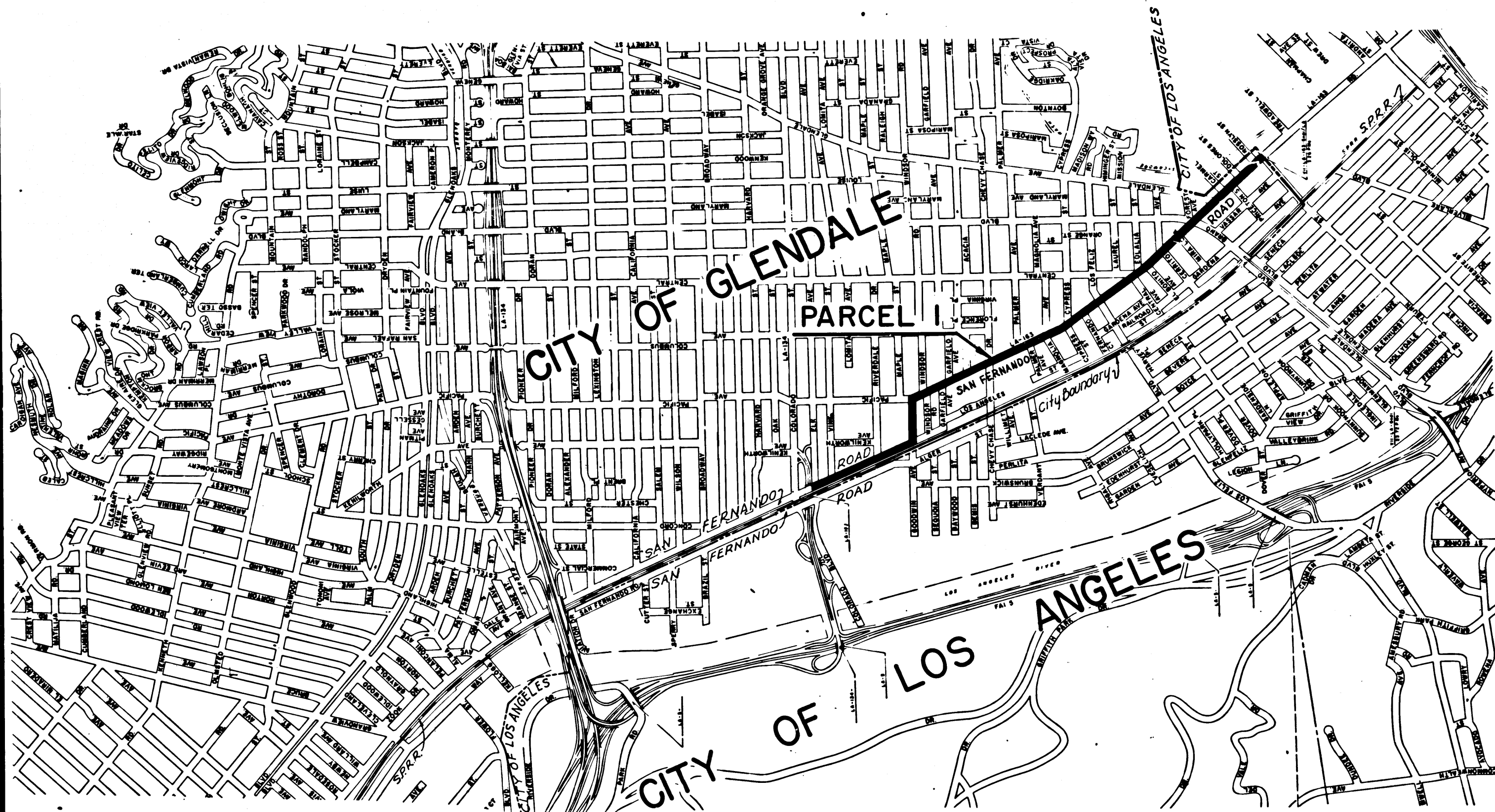
Anthony
 DEPUTY DISTRICT ENGINEER
 DATE *November 2, 1967*

RIGHT OF WAY MAPS OF
STATE HIGHWAY

In the City of Glendale between
 Los Angeles City Limits and Colorado Blvd.

**CITY
 OF
 LOS ANGELES**

2888
 RECORDED
 AT REQUEST OF
 DEPT. OF PUBLIC WORKS
 NOV. 6, 1967
 18 PAST 1 P.M.
 IN BOOK 6
 AT PAGE 53
 OF STATE HIGHWAY MAPS
 LOS ANGELES COUNTY, CALIF.
 RAY E. LEE
 COUNTY RECORDER
 BY *Chapman* Deputy



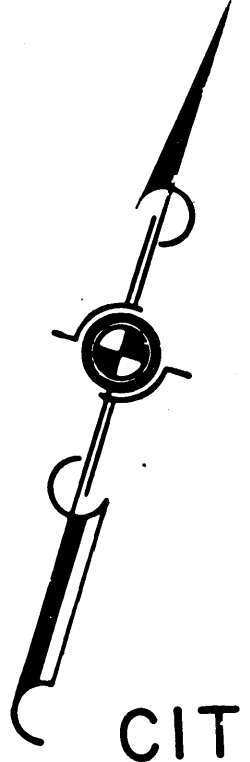
REL-452
 DWN BY *RSD*
 CLC BY *RSD*
 CTD BY *GDM*
 BASE MAP NO'S
 REF. MAP NO'S
 AS BUILT NO'S

STATE OF CALIFORNIA
 TRANSPORTATION AGENCY
 DEPARTMENT OF PUBLIC WORKS
 DIVISION OF HIGHWAYS
PROPOSED RELINQUISHMENT
 AREA TO BE RELINQUISHED SHOWN THUS
 SCALE
 0 1200 2400 3600 4800

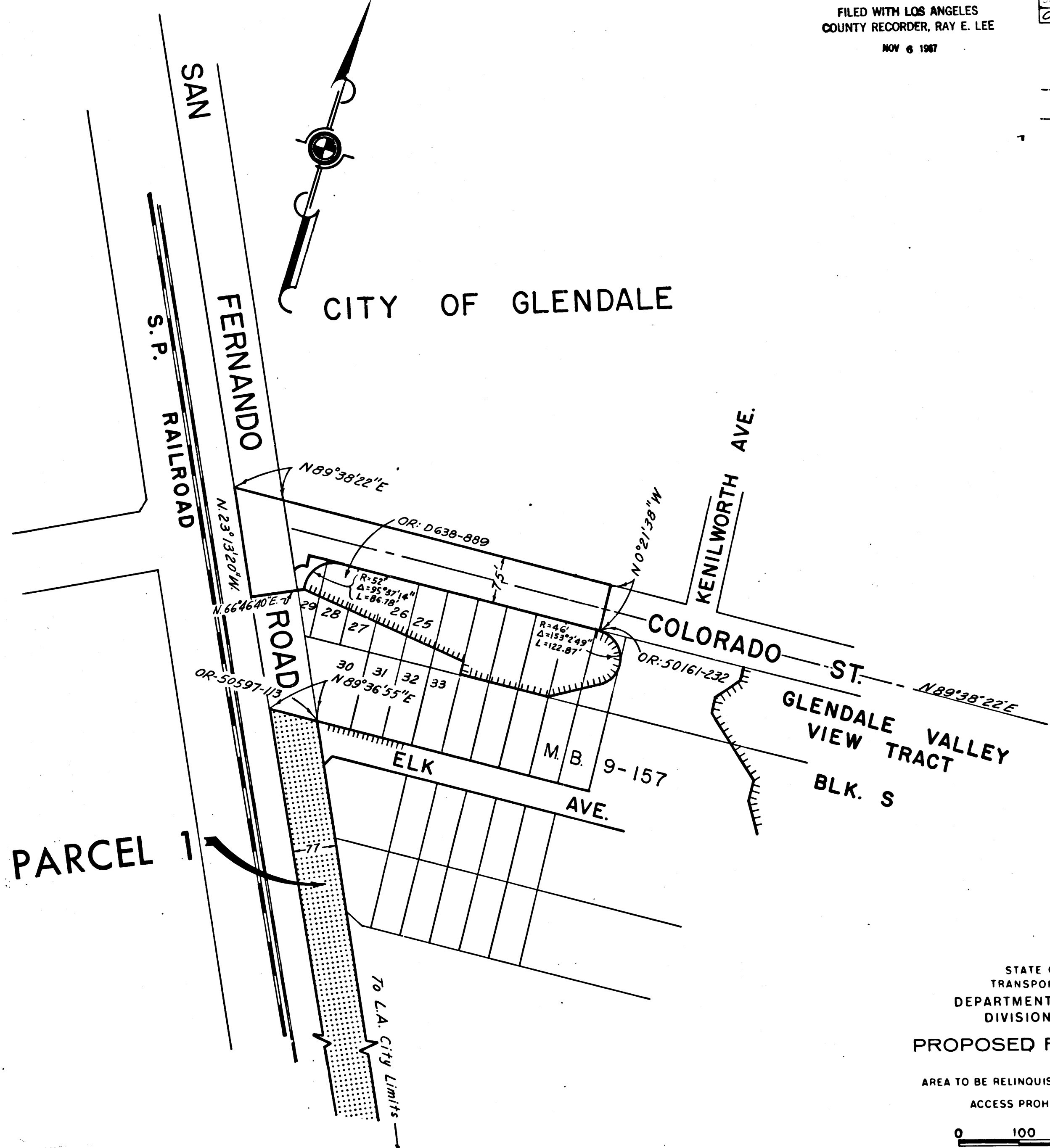
FILED WITH LOS ANGELES COUNTY RECORDER, RAY E. LEE
NOV 6 1967

DIST	COUNTY	ROUTE	POS. MILES.	SHEET No.	TOTAL SHEETS
07	LA	163	33/52	2	2

awh
DEPUTY DISTRICT ENGINEER
November 2, 1967
DATE



CITY OF GLENDALE



STATE OF CALIFORNIA
TRANSPORTATION AGENCY
DEPARTMENT OF PUBLIC WORKS
DIVISION OF HIGHWAYS

PROPOSED RELINQUISHMENT

AREA TO BE RELINQUISHED SHOWN THUS

ACCESS PROHIBITED

0 100 200 300 400

REL-452
BY D.L.P.
BY S.L.T.
BY G.R.W.
BASE MAP NO'S
E-1160
REF. MAP NO'S
S BUILT NO'S