

DIST	COUNTY	ROUTE	POST MILES	SHEET NO.	TOTAL SHEETS
7	LA	10	35.3/35.4	1	2

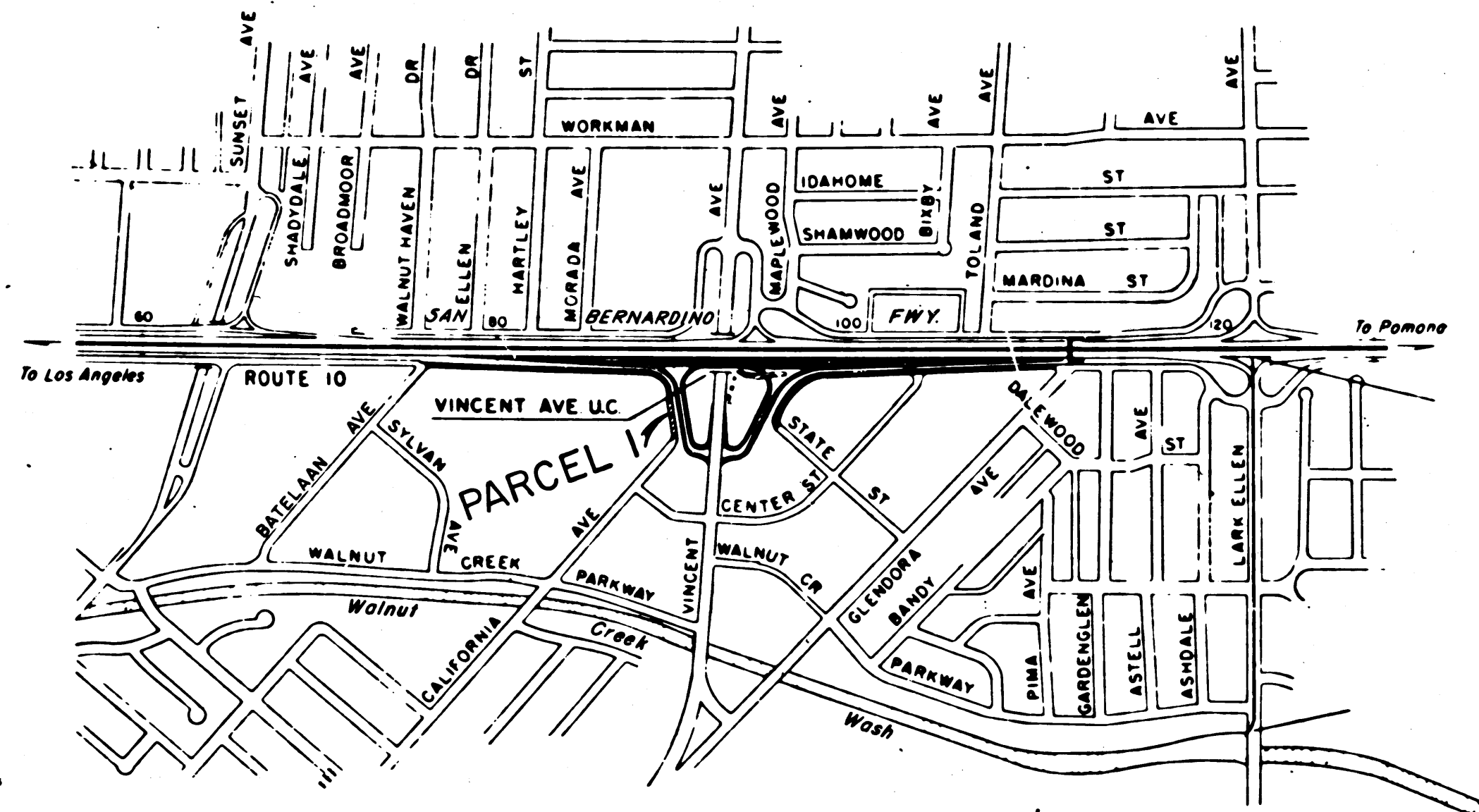
STATE OF CALIFORNIA
 TRANSPORTATION AGENCY
 DEPARTMENT OF PUBLIC WORKS
 DIVISION OF HIGHWAYS

RIGHT OF WAY MAPS OF
STATE HIGHWAY
 PORTION OF CALIFORNIA AVE.
 NEAR VINCENT AVE. U.C.

Anthony
 DEPUTY DISTRICT ENGINEER
 November 2, 1967
 DATE

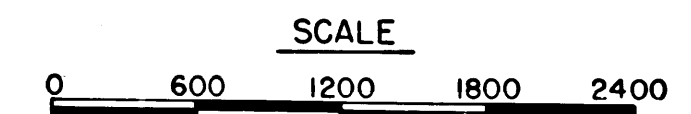
2505
 RECORDED
 AT REQUEST OF
 DEPT. OF PUBLIC WORKS
 NOV. 7, 1967
 35 MIN. 10 AM
 PAST

IN BOOK 6
 AT PAGE 55
 OF STATE HIGHWAY MAPS
 LOS ANGELES COUNTY, CALIF.
 RAY E. LEE
 COUNTY RECORDER
Free



CITY OF WEST COVINA

INTERSTATE
 STATE OF CALIFORNIA
 TRANSPORTATION AGENCY
 DEPARTMENT OF PUBLIC WORKS
 DIVISION OF HIGHWAYS
 PROPOSED RELINQUISHMENT



REL-524
 DRN BY L.S.
 C'LC BY M.M.
 CR'D BY D.L.P.
 BASE MAP NO'S
 F-1863
 REF. MAP NO'S
 AS BUILT NO'S
 160-4

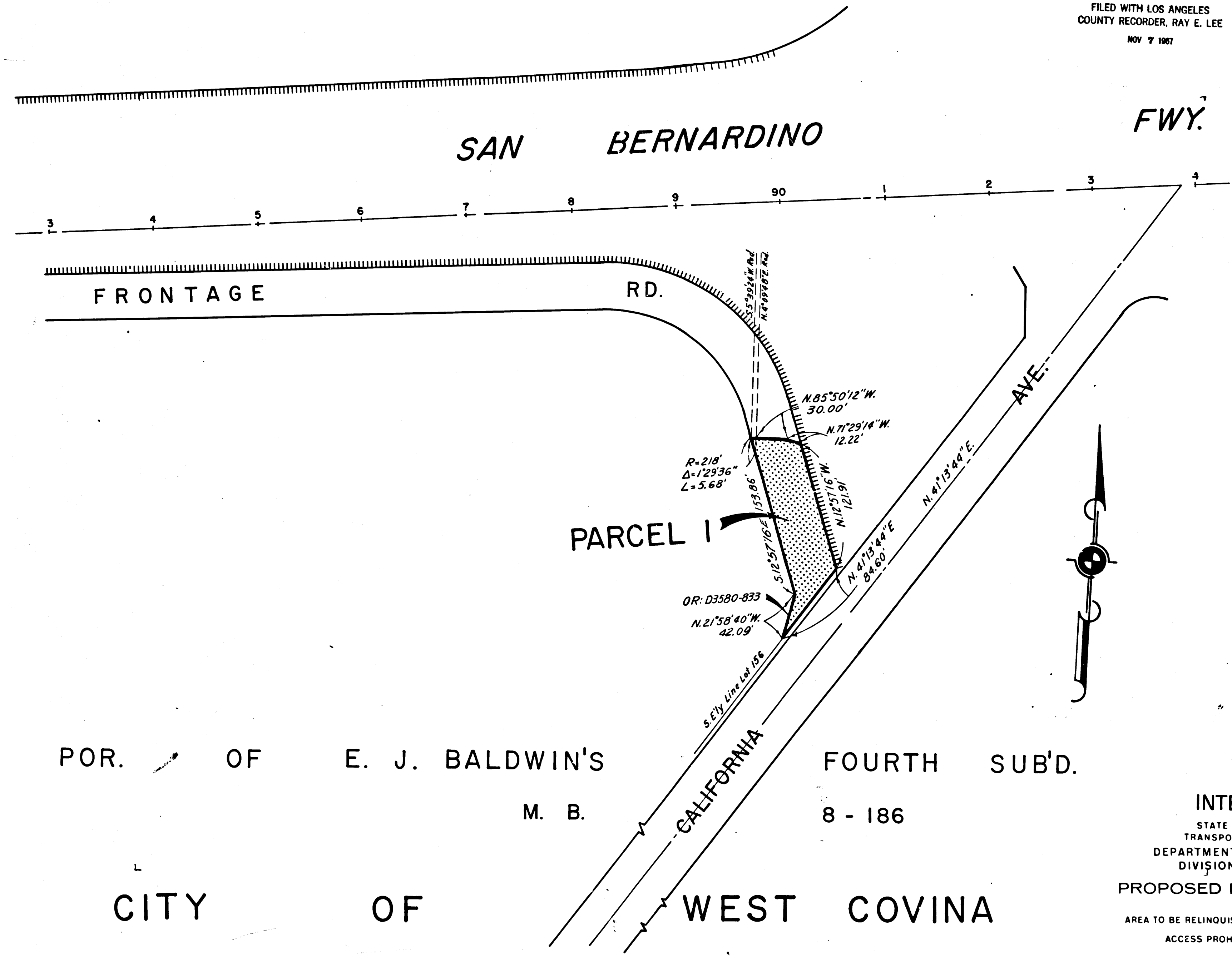
0.35
 35

FILED WITH LOS ANGELES COUNTY RECORDER, RAY E. LEE

DIST	COUNTY	ROUTE	POST MILES	SHEET No.	TOTAL SHEETS
7	LA	10	35.3/35.4	2	2

NOV 7 1967

antfoj
 DEPUTY DISTRICT ENGINEER
 November 2, 1967
 DATE



REL-524
 DRN BY L.S.
 C'LC BY M.M.
 CK'D BY D.L.P.
 BASE MAP NO'S
 F-1863
 REF. MAP NO'S
 AS BUILT NO'S
 160-4

INTERSTATE
 STATE OF CALIFORNIA
 TRANSPORTATION AGENCY
 DEPARTMENT OF PUBLIC WORKS
 DIVISION OF HIGHWAYS
 PROPOSED RELINQUISHMENT

AREA TO BE RELINQUISHED SHOWN THUS

ACCESS PROHIBITED

0 50 100 150 200