

DIST	COUNTY	ROUTE	POST MILES	SHEET TOTAL
7	LA	60	29/30	1 2

*C. H. H. H.*  
 DEPUTY DISTRICT ENGINEER  
 Nov. 24, 1967  
 DATE

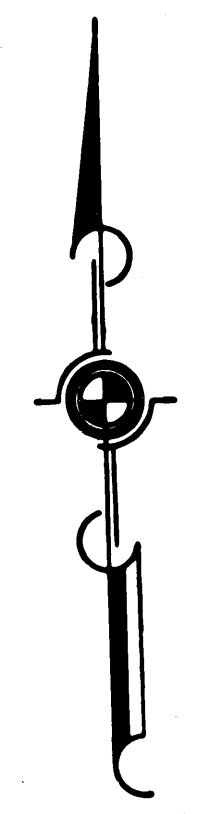
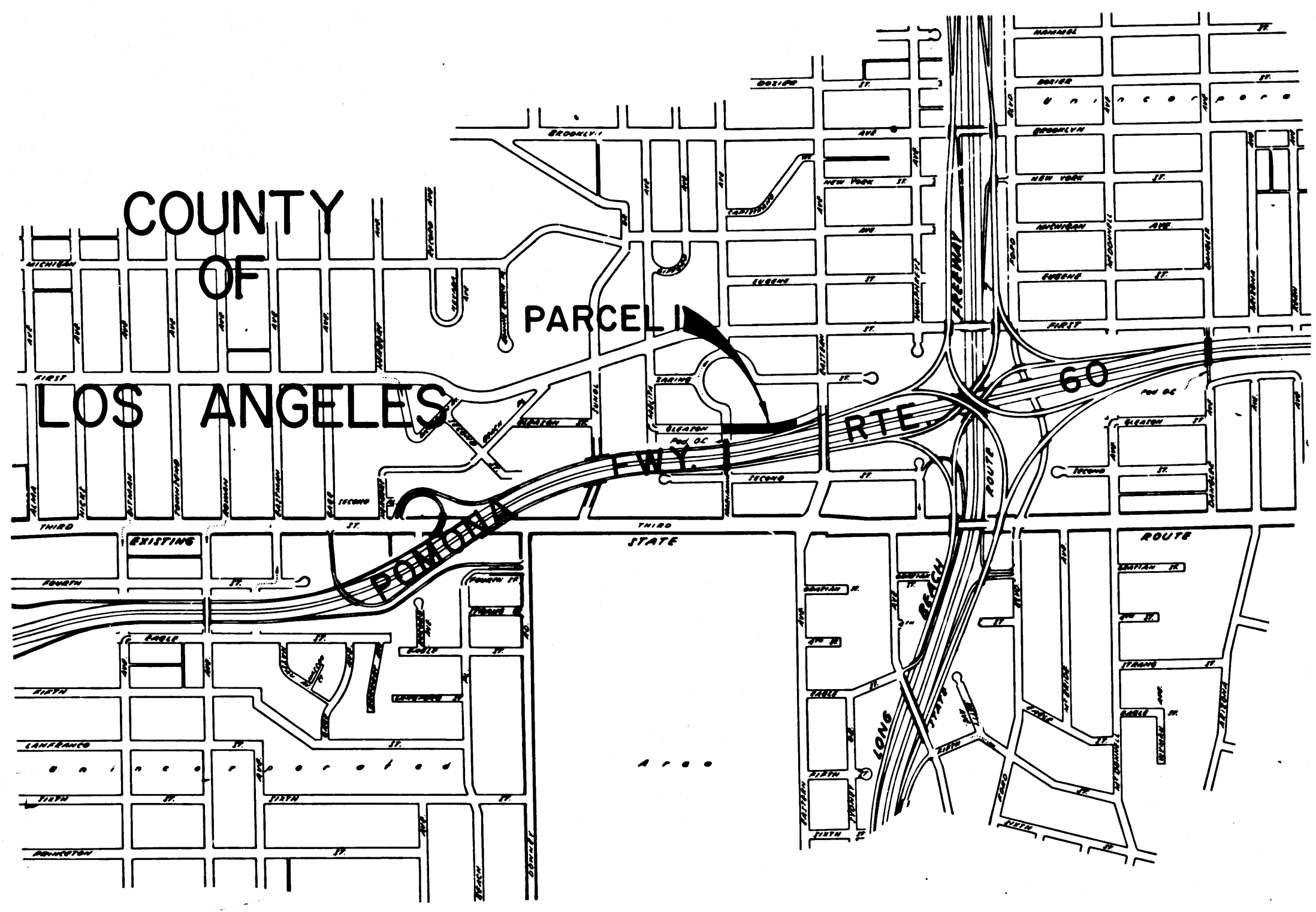
3020

FILED  
 AT REQUEST OF  
 DEPT. OF PUBLIC WORKS  
 Nov. 29, 1967  
 40 PAST 1 P.M.

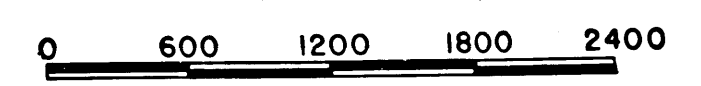
IN BOOK 6  
 AT PAGE 57  
 OF STATE HIGHWAY MAPS  
 LOS ANGELES COUNTY, CALIF.  
 RAY E. LEE  
 COUNTY RECORDER  
 BY *C. H. H. H.* Free  
 Deputy

STATE OF CALIFORNIA  
 TRANSPORTATION AGENCY  
 DEPARTMENT OF PUBLIC WORKS  
 DIVISION OF HIGHWAYS

RIGHT OF WAY MAPS OF  
**STATE HIGHWAY**  
 In the County of Los Angeles  
 on Gleason St. at the Pomona Fwy.



STATE OF CALIFORNIA  
 TRANSPORTATION AGENCY  
 DEPARTMENT OF PUBLIC WORKS  
 DIVISION OF HIGHWAYS  
**PROPOSED RELINQUISHMENT**



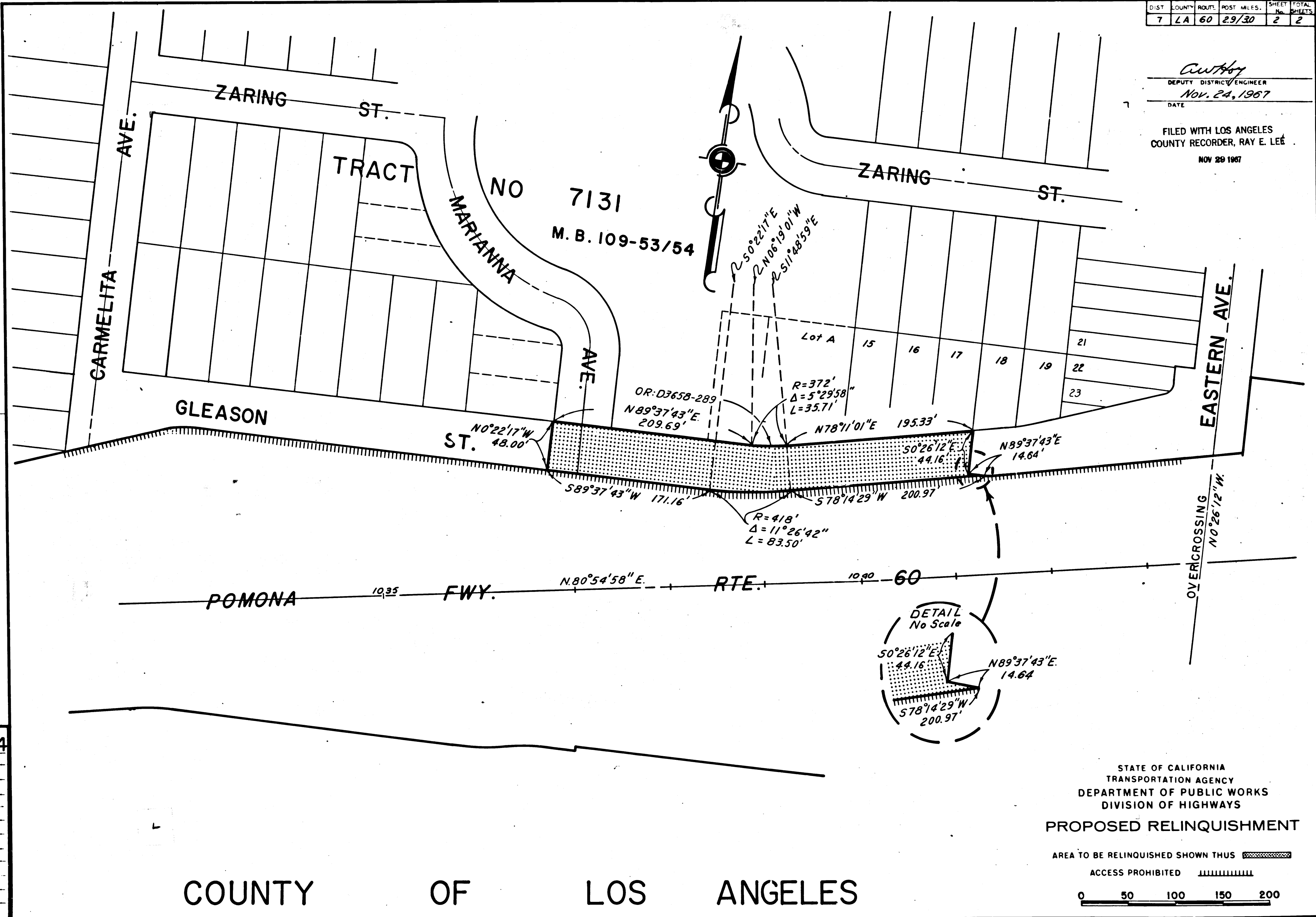
REL-634  
 DRN BY M.A.C.  
 C'LC BY M.M.  
 CK'D BY G.D.W.  
 BASE MAP NO'S  
 F-1780  
 REF. MAP NO'S  
 AS BUILT NO'S  
 159-12

6/14/67  
 6/17/67

DIST.	COUNTY	ROUTE	POST. MILES.	SHEET NO.	TOTAL SHEETS
7	LA	60	29/30	2	2

*Anthony*  
 DEPUTY DISTRICT ENGINEER  
 Nov. 24, 1967  
 DATE

FILED WITH LOS ANGELES  
 COUNTY RECORDER, RAY E. LEE  
 NOV 29 1967



REL-634  
 DRN BY M.A.C.  
 C.L.C. BY M.M.  
 CK'D BY G.D.M.  
 BASE MAP NO'S  
 F-1780  
 REF. MAP NO'S  
 C.C.M. 215.7  
 AS BUILT NO'S  
 159-12

COUNTY OF LOS ANGELES

STATE OF CALIFORNIA  
 TRANSPORTATION AGENCY  
 DEPARTMENT OF PUBLIC WORKS  
 DIVISION OF HIGHWAYS  
**PROPOSED RELINQUISHMENT**  
 AREA TO BE RELINQUISHED SHOWN THUS   
 ACCESS PROHIBITED   
 0 50 100 150 200