

DIST	COUNTY	ROUTE	POST MILES	SHEET NO.	TOTAL SHEETS
07	L.A.	5	50.3	1	2

STATE OF CALIFORNIA
 TRANSPORTATION AGENCY
 DEPARTMENT OF PUBLIC WORKS
 DIVISION OF HIGHWAYS

RIGHT OF WAY MAPS OF
STATE HIGHWAY

In the County of Los Angeles
 on Lyons Ave. at Rte. 5

C. W. Hoy
 DEPUTY DISTRICT ENGINEER
 Dec. 28, 1967
 DATE

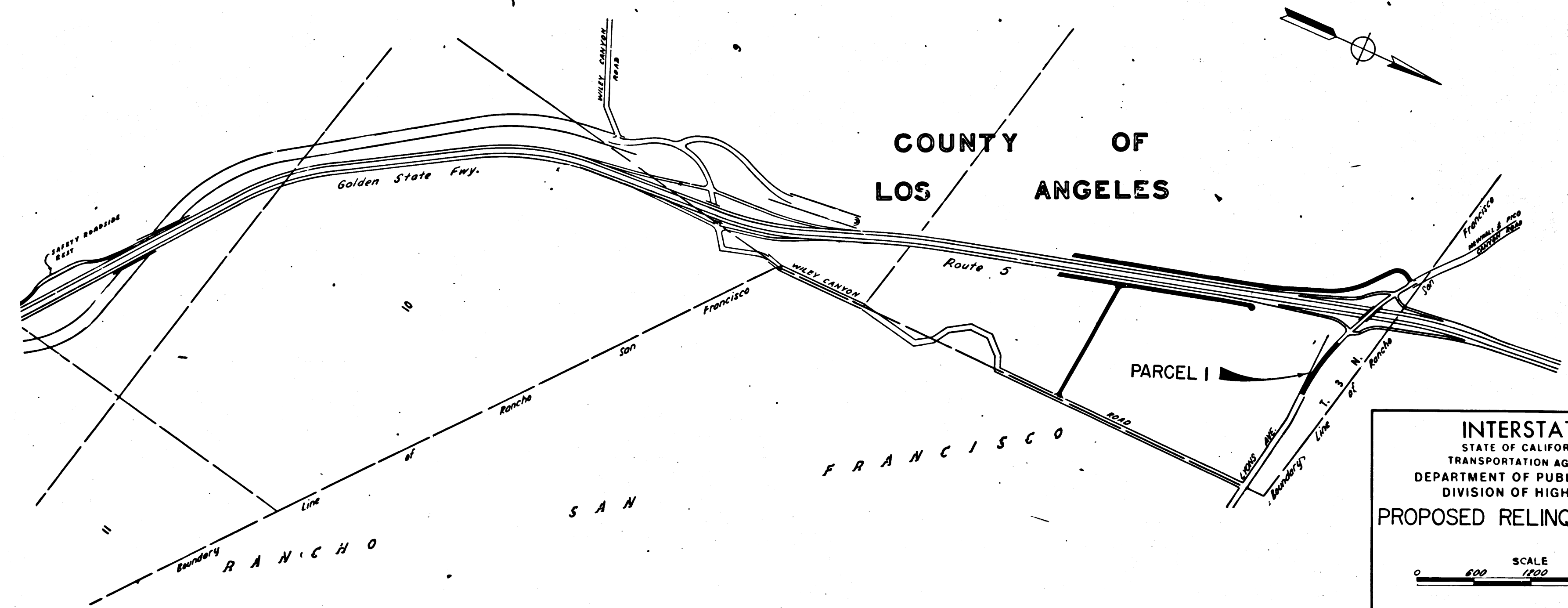
3383

FILED
 AT REQUEST OF
 DEPT. OF PUBLIC WORKS
 DEC. 28, 1967
 MIN. 40 PAST 2 P.M.

IN BOOK 6
 AT PAGE 59

OF STATE HIGHWAY MAPS
 LOS ANGELES COUNTY, CALIF.
 RAY E. LEE
 COUNTY RECORDER
Free

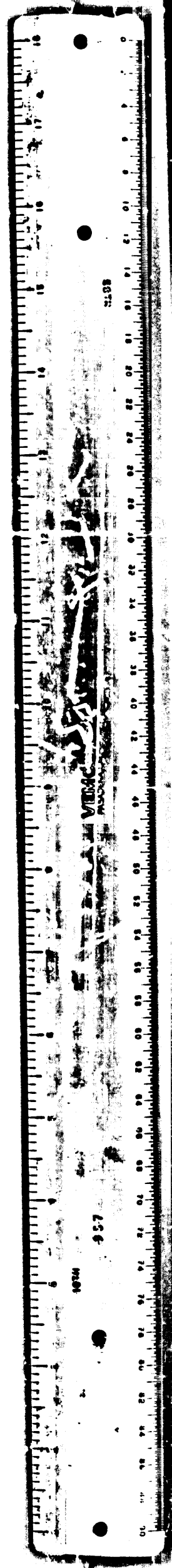
2140
 6-5960



INTERSTATE
 STATE OF CALIFORNIA
 TRANSPORTATION AGENCY
 DEPARTMENT OF PUBLIC WORKS
 DIVISION OF HIGHWAYS
PROPOSED RELINQUISHMENT

SCALE
 0 500 1000 1500

DR'N BY	M. A. C.	R/W MAP NO.	F-1307
C'LC BY	E. J. P.	REF. MAP NO.	
C'K'D BY	S. L. T.	REL-	643
REVISED			

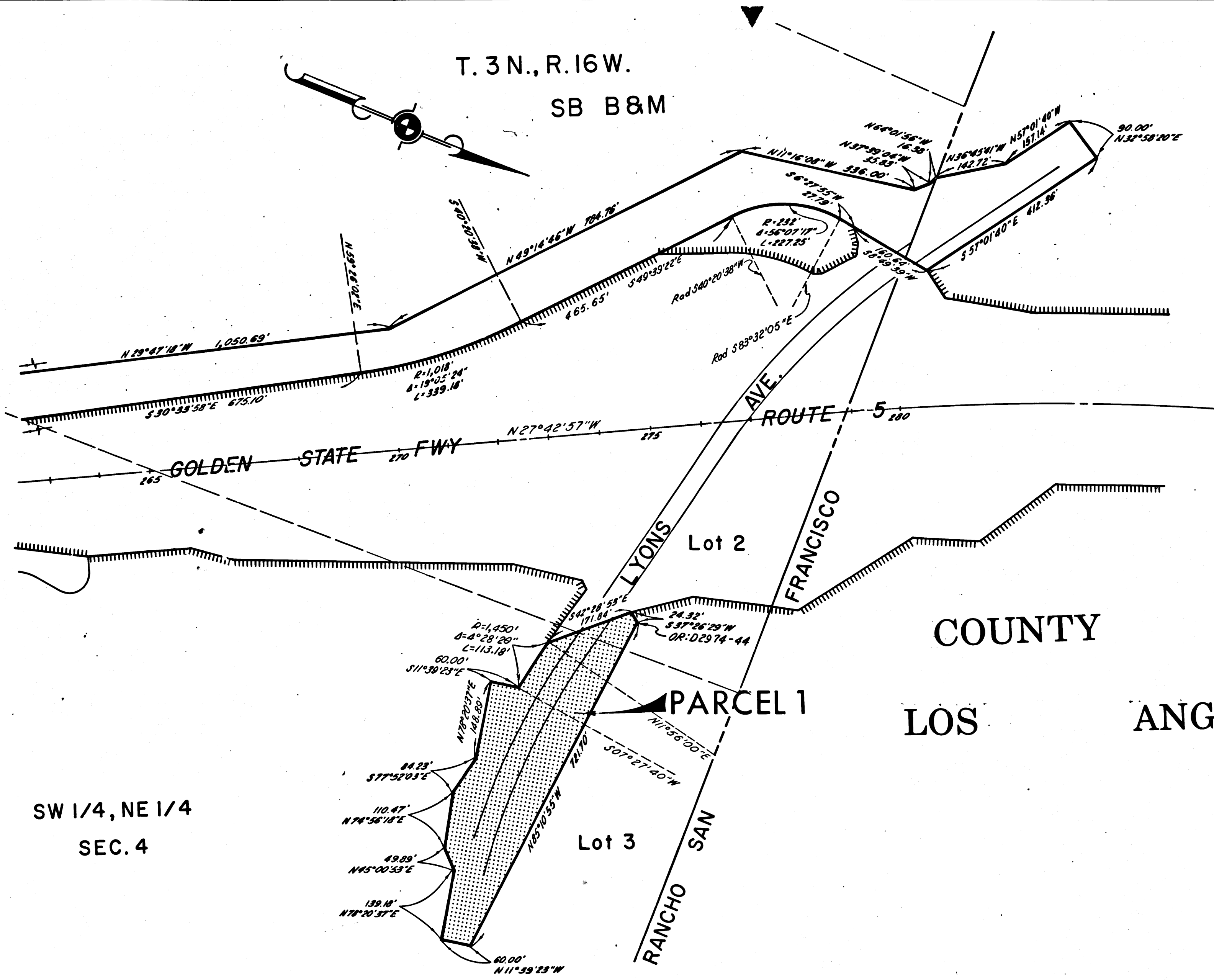


DIST	COUNTY	ROUTE	POST MILES	SHEET NO.	TOTAL SHEETS
07	L.A.	5	50.3	2	2

Curtis
 DEPUTY DISTRICT ENGINEER
 Dec. 26, 1967
 DATE

FILED WITH LOS ANGELES
 COUNTY RECORDER, RAY E. LEE
 DEC 28 1967

T. 3 N., R. 16 W.
 SB B & M



SW 1/4, NE 1/4
 SEC. 4

COUNTY OF
 LOS ANGELES

INTERSTATE
 STATE OF CALIFORNIA
 TRANSPORTATION AGENCY
 DEPARTMENT OF PUBLIC WORKS
 DIVISION OF HIGHWAYS

PROPOSED RELINQUISHMENT

0 50 100 150 200

AREA TO BE RELINQUISHED SHOWN THUS

ACCESS PROHIBITED

DR'N BY	M.A.C.	R/W MAP NO.	F-1307
C'LC BY	E.J.P.	REF. MAP NO.	
C'KD BY	S.L.T.	REL-	643
REVISED			