

DIST.	COUNTY	ROUTE	POST MILES	SHEET NO.	TOTAL SHEETS
07	L.A.	213	—	1	3

STATE OF CALIFORNIA
 TRANSPORTATION AGENCY
 DEPARTMENT OF PUBLIC WORKS
 DIVISION OF HIGHWAYS

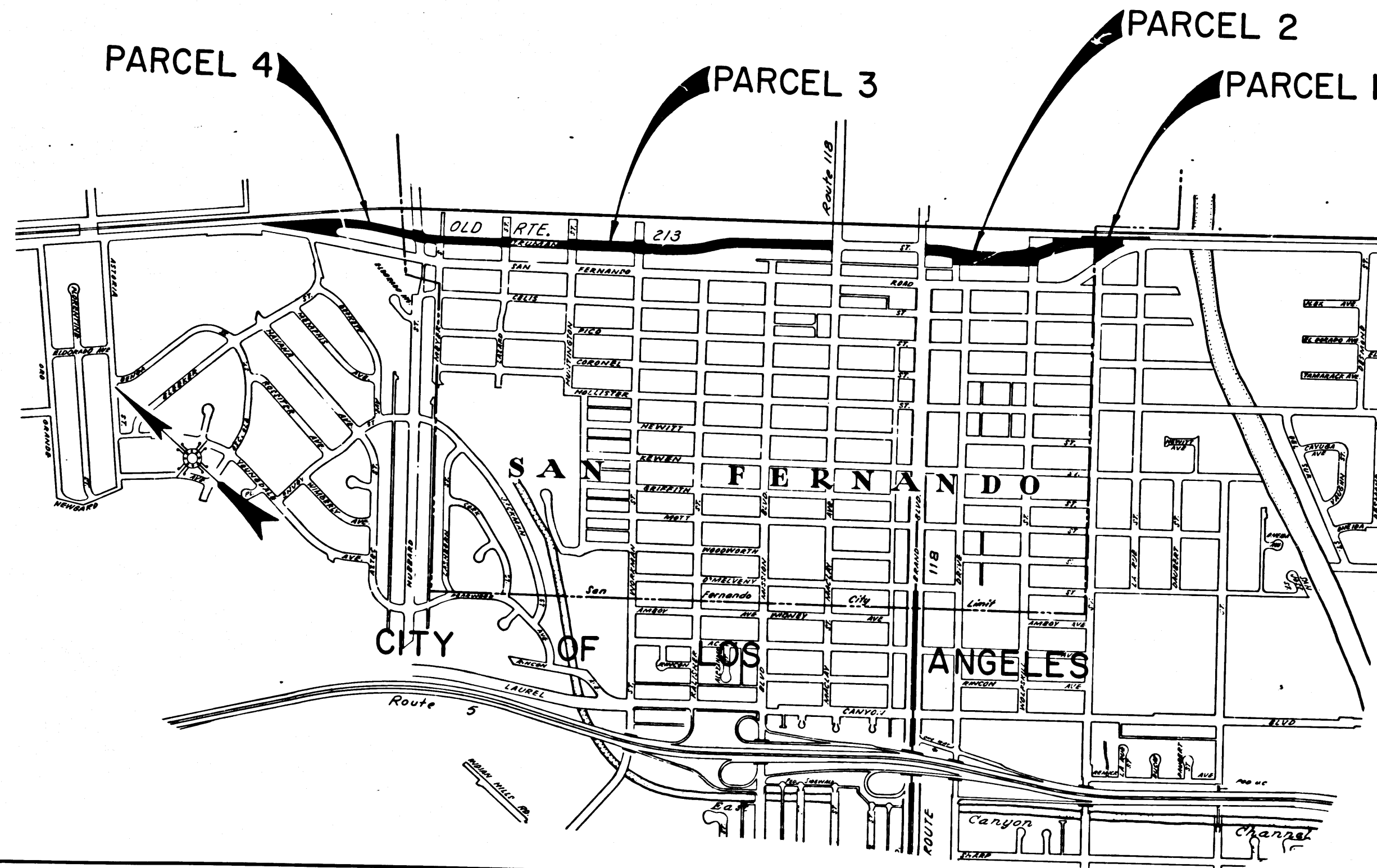
RIGHT OF WAY MAPS OF
STATE HIGHWAY

In the County of Los Angeles on
 Truman St. adjacent to San Fernando Rd.

Anthony
 DEPUTY DISTRICT ENGINEER
 DATE *March 7, 1968*

2328

FILED
 AT REQUEST OF
 DEPT. OF PUBLIC WORKS
MAR. 11, 1968
 4:38 P.M.
 IN BOOK *6*
 AT PAGE *65*
 OF STATE HIGHWAY MAPS
 LOS ANGELES COUNTY, CALIF.
 BY *FILED*
 COUNTY RECORDER *Free*



STATE OF CALIFORNIA
 TRANSPORTATION AGENCY
 DEPARTMENT OF PUBLIC WORKS
 DIVISION OF HIGHWAYS
PROPOSED RELINQUISHMENT

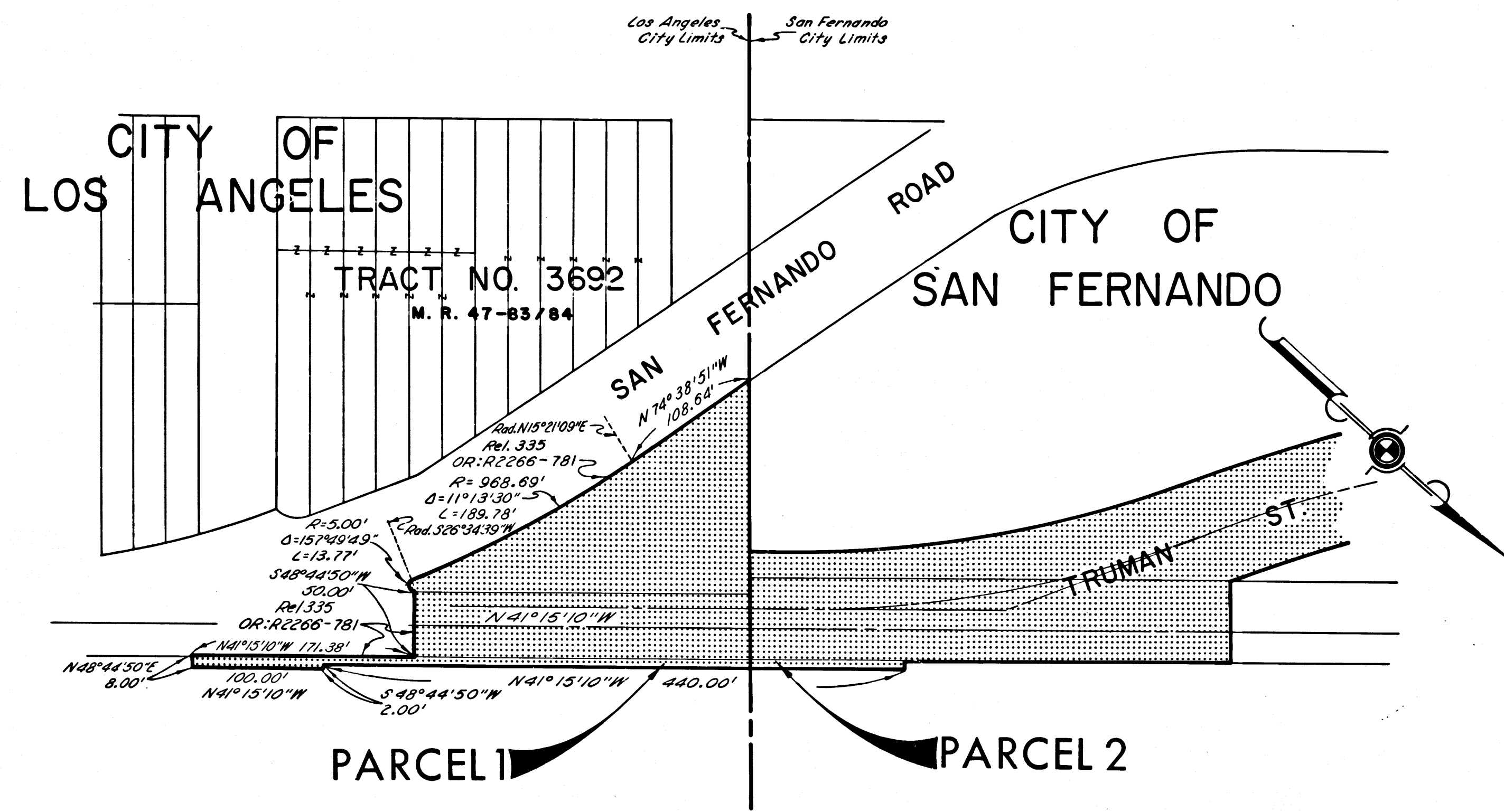
SCALE
 0 600 1200 1800 2400

DR'N BY <i>M.A.C.</i>	R/W MAP NO. <i>P25446</i>
C'LC BY <i>G.D.W.</i>	REF. MAP NO. <i>P25446-1</i>
C'K'D BY <i>S.L.T.</i>	REL- 648
REVISED	649

DIST	COUNTY	ROUTE	POST MILES	SHEET NO.	TOTAL SHEETS
07	L.A.	213		2	3

C.W. Hoy
 DEPUTY DISTRICT ENGINEER
 March 7, 1968
 DATE

FILED WITH LOS ANGELES
 COUNTY RECORDER, RAY E. LEE
 MAR 11 1968



STATE OF CALIFORNIA
 TRANSPORTATION AGENCY
 DEPARTMENT OF PUBLIC WORKS
 DIVISION OF HIGHWAYS

PROPOSED RELINQUISHMENT

0 50 100 150 200

AREA TO BE RELINQUISHED SHOWN THUS

ACCESS PROHIBITED

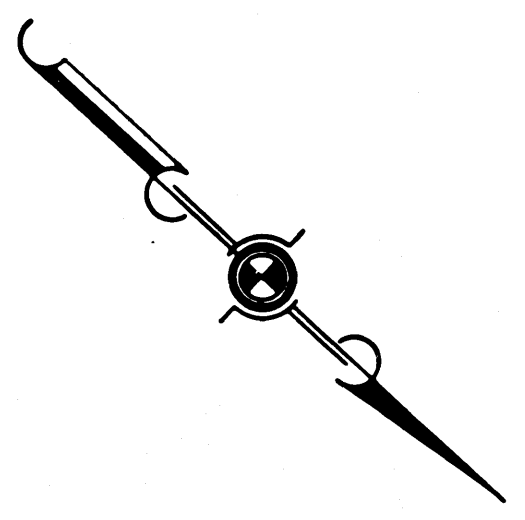
DR'N BY <i>M.A.C.</i>	R/W MAP NO. <i>P25448</i>
C'LC BY <i>G.D.W.</i>	REF. MAP NO.
C'K'D BY <i>S.L.T.</i>	REL- 648
REVISED	649

DIST	COUNTY	ROUTE	POST MILES	SHEET NO.	TOTAL SHEETS
07	L.A.	213		3	3

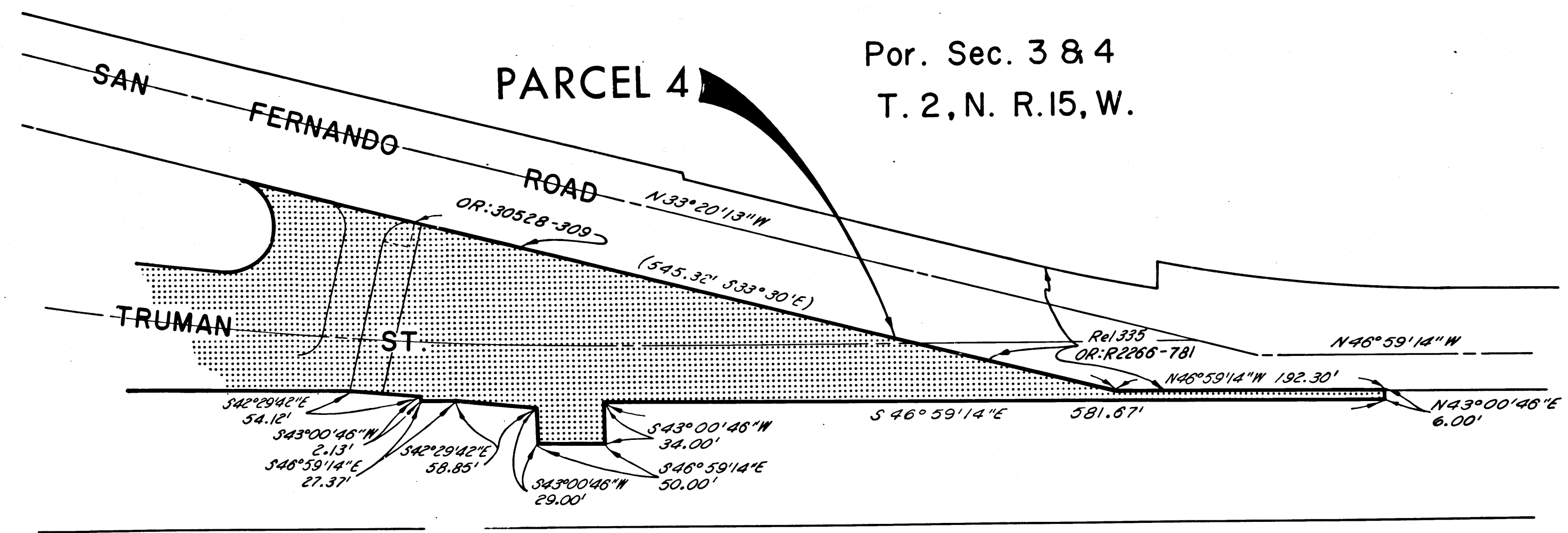
Anthony
 DEPUTY DISTRICT ENGINEER
 DATE March 7, 1968

FILED WITH LOS ANGELES
 COUNTY RECORDER, RAY E. LEE
 MAR 11 1968

CITY OF
 LOS ANGELES



Por. Sec. 3 & 4
 T. 2, N. R. 15, W.



STATE OF CALIFORNIA
 TRANSPORTATION AGENCY
 DEPARTMENT OF PUBLIC WORKS
 DIVISION OF HIGHWAYS

PROPOSED RELINQUISHMENT

0 50 100 150 200

AREA TO BE RELINQUISHED SHOWN THUS

ACCESS PROHIBITED

DR'N BY <i>M.A.C.</i>	R/W MAP NO. <i>P25446-1</i>
C'LC BY <i>G.D.W.</i>	REF. MAP NO.
C'k'D BY <i>S.L.T.</i>	REL- 648
REVISED	649