

DIST	COUNTY	ROUTE	POST MILES	SHEET NO	TOTAL SHEETS
07	L.A.	14	70.0/77.0	1	6

STATE OF CALIFORNIA
 TRANSPORTATION AGENCY
 DEPARTMENT OF PUBLIC WORKS
 DIVISION OF HIGHWAYS

RIGHT OF WAY MAPS OF
STATE HIGHWAY

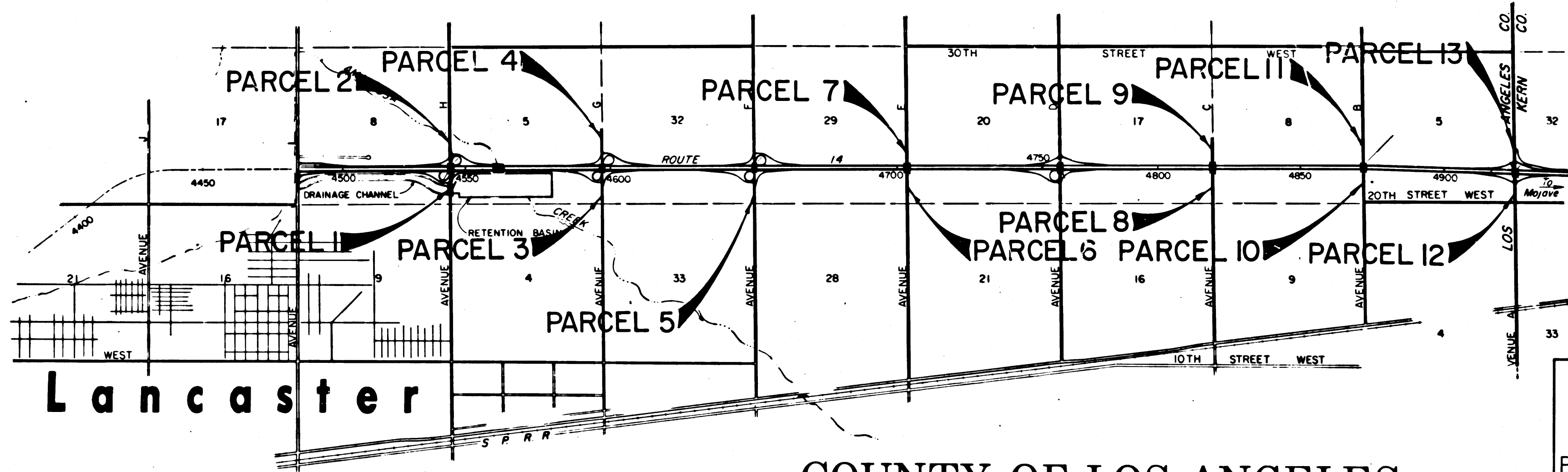
In Los Angeles County on Rte. 14 Fwy.
 between Ave. H and the Kern Co. Line

[Signature]
 DEPUTY DISTRICT ENGINEER
 Mar. 14, 1968
 DATE

2112

FILED
 AT REQUEST OF
 DEPT. OF PUBLIC WORKS
 MARCH 24, 1968
 52 MIN. 12 PM
 PAST
 IN BOOK 6
 AT PAGE 68
 OF STATE HIGHWAY MAPS
 LOS ANGELES COUNTY, CALIF.
 RAY E. LEE
 COUNTY RECORDER
 BY *[Signature]*
 Deputy
 FREE

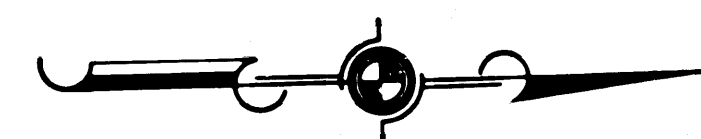
2112
 12 52 PM



STATE OF CALIFORNIA
 TRANSPORTATION AGENCY
 DEPARTMENT OF PUBLIC WORKS
 DIVISION OF HIGHWAYS
PROPOSED RELINQUISHMENT

SCALE IN FEET
 5000 2500 0 5000

DR'N BY	M. A. C.	R/W MAP NO.	F-1080, F1081, F1082, F1083
C'LC BY	G. D. W.	REF. MAP NO.	172-12
C'K'D BY	S. L. T.	REL-	644
REVISED			



BOOK 6 PAGE 69

DIST	COUNTY	ROUTE	POST MILES	SHEET NO.	TOTAL SHEETS
07	L. A.	14	70.0/77.0	2	6

296
2969

J. D. Williams
DEPUTY DISTRICT ENGINEER
Mar. 14, 1968
DATE

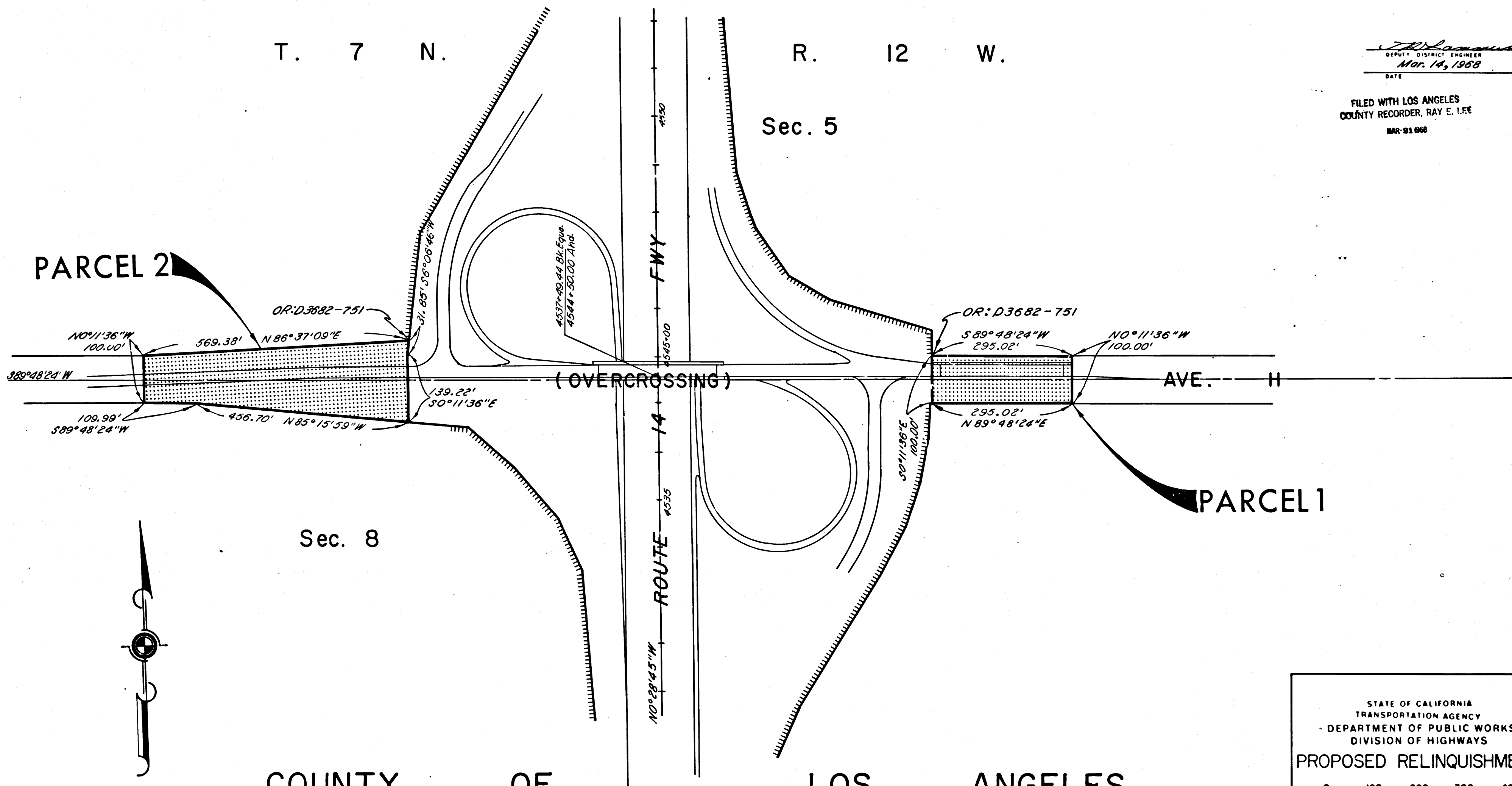
FILED WITH LOS ANGELES
COUNTY RECORDER, RAY E. LEE
MAR 21 1968

T. 7 N. R. 12 W.

Sec. 5

Sec. 8

COUNTY OF LOS ANGELES



STATE OF CALIFORNIA
TRANSPORTATION AGENCY
DEPARTMENT OF PUBLIC WORKS
DIVISION OF HIGHWAYS

PROPOSED RELINQUISHMENT

0 100 200 300 400

AREA TO BE RELINQUISHED SHOWN THUS

ACCESS PROHIBITED

DR'N BY <i>M.A.C.</i>	R/W MAP NO. <i>F1080</i>
C'LC BY <i>G.D.W.</i>	REF. MAP NO. <i>172-72</i>
C'K'D BY <i>S.L.T.</i>	REL- 644
REVISED	

DIST	COUNTY	ROUTE	POST MILES	SHEET NO.	TOTAL SHEETS
07	L.A.	14	700/770	3	6

346
70

COUNTY OF LOS ANGELES

T. 8 N. R. 12 W.

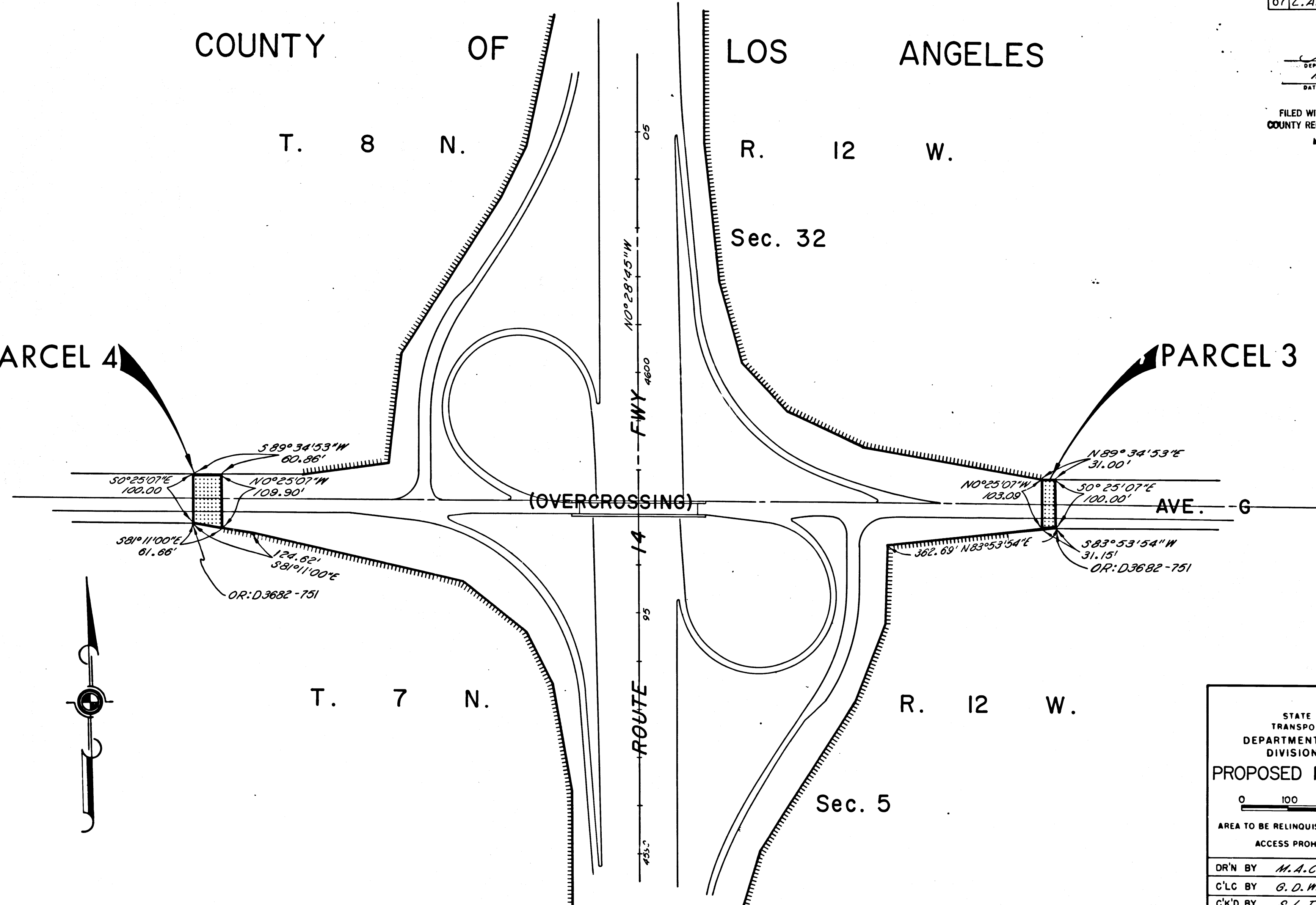
Sec. 32

M. L. ...
DEPUTY DISTRICT ENGINEER
Mar. 14, 1968
DATE

FILED WITH LOS ANGELES
COUNTY RECORDER, RAY E. LEE
MAR 21 1968

PARCEL 4

PARCEL 3



STATE OF CALIFORNIA
TRANSPORTATION AGENCY
DEPARTMENT OF PUBLIC WORKS
DIVISION OF HIGHWAYS

PROPOSED RELINQUISHMENT

0 100 200 300 400

AREA TO BE RELINQUISHED SHOWN THUS [Hatched Box]

ACCESS PROHIBITED [Dashed Line]

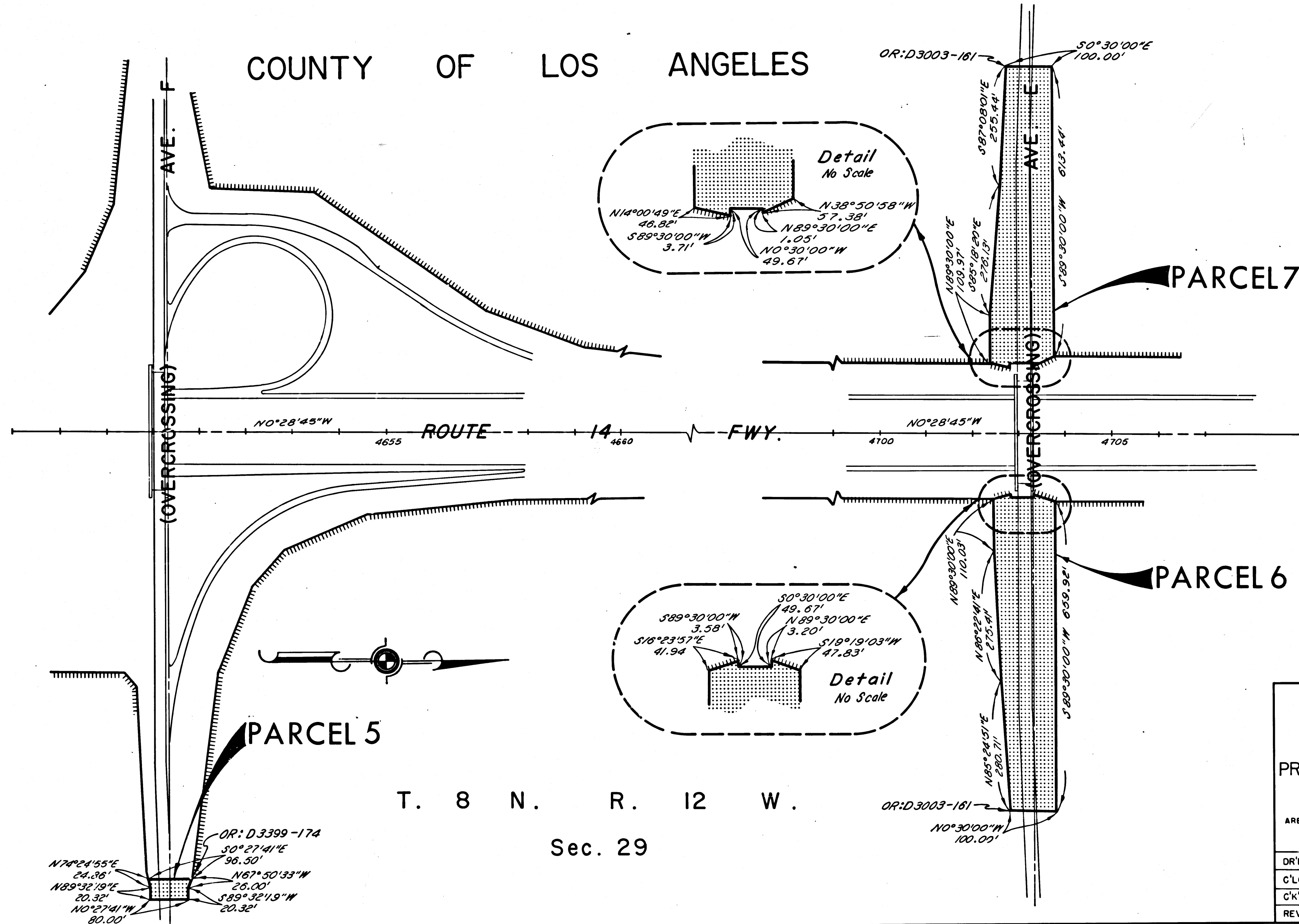
DR'N BY	M.A.C.	R/W MAP NO.	F1081
C'LC BY	G.D.W.	REF. MAP NO.	172-12
C'K'D BY	S.L.T.	REL-	644
REVISED			

DIST	COUNTY	ROUTE	POST MILES	SHEET NO.	TOTAL SHEETS
07	L.A.	14	70.0/77.0	4	6

6 of 6
71

COUNTY OF LOS ANGELES

[Signature]
DEPUTY DISTRICT ENGINEER
Mar. 14, 1958
DATE
FILED WITH LOS ANGELES
COUNTY RECORDER, RAY E. LEE
MAR 21 1958



STATE OF CALIFORNIA
TRANSPORTATION AGENCY
DEPARTMENT OF PUBLIC WORKS
DIVISION OF HIGHWAYS

PROPOSED RELINQUISHMENT

0 100 200 300 400

AREA TO BE RELINQUISHED SHOWN THUS

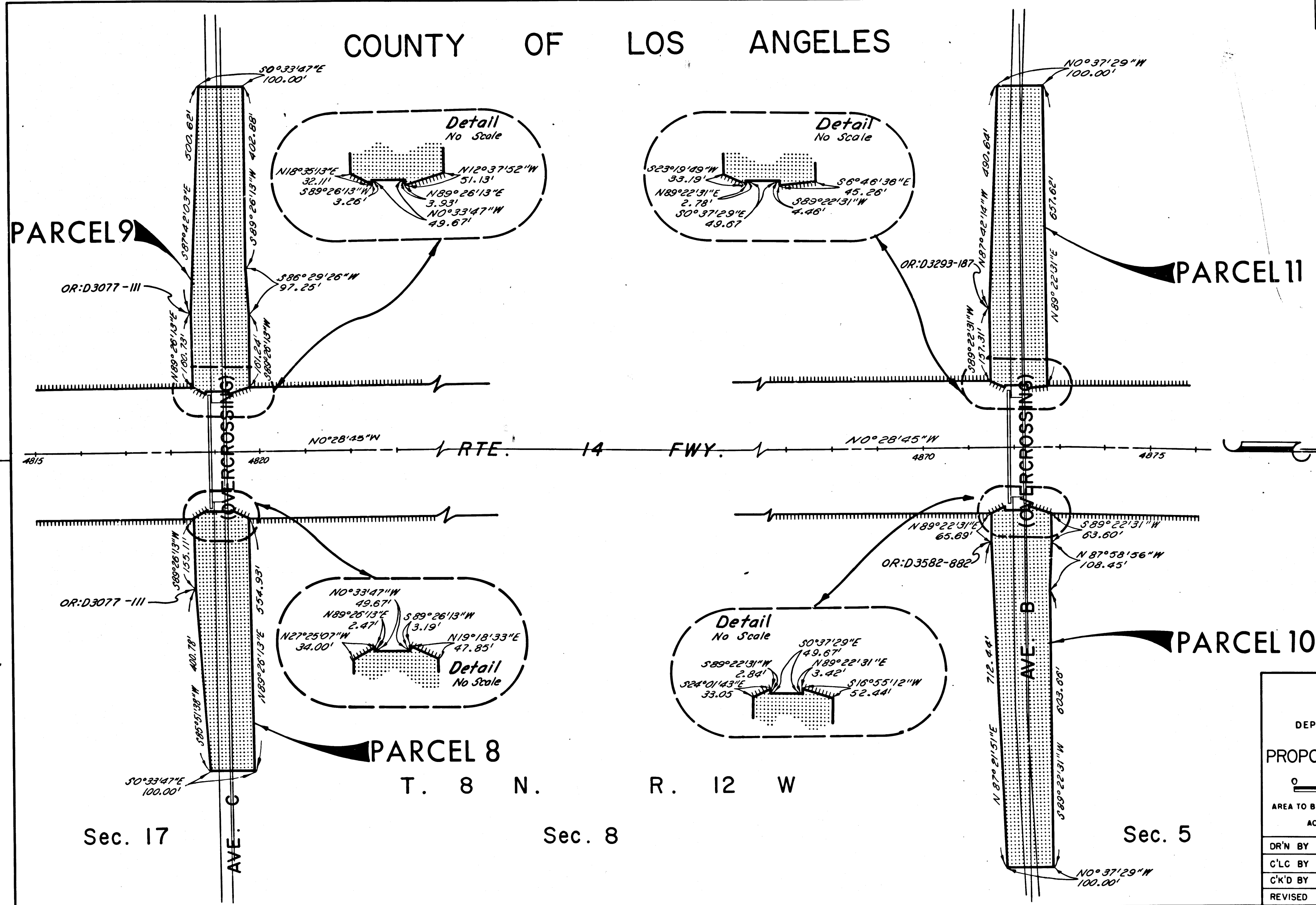
ACCESS PROHIBITED

DR'N BY	M.A.C.	R/W MAP NO.	F1081
C'LC BY	G.D.W.	REF. MAP NO.	172-12
C'K'D BY	S.L.T.	REL- 644	
REVISED			

DIST	COUNTY	ROUTE	POST MILES	SHEET NO.	TOTAL SHEETS
07	L.A.	14	70.0/77.0	5	6

COUNTY OF LOS ANGELES

J. L. Hammond
 DEPUTY DISTRICT ENGINEER
 DATE Mar. 14, 1968
 FILED WITH LOS ANGELES
 COUNTY RECORDER, RAY E. LEE
 MAR 21 1968



STATE OF CALIFORNIA
 TRANSPORTATION AGENCY
 DEPARTMENT OF PUBLIC WORKS
 DIVISION OF HIGHWAYS
PROPOSED RELINQUISHMENT

0 100 200 300 400

AREA TO BE RELINQUISHED SHOWN THUS

ACCESS PROHIBITED

DR'N BY <i>M. A. C.</i>	R/W MAP NO. <i>F1082</i>
C'LG BY <i>G. D. W.</i>	REF. MAP NO. <i>172-12</i>
C'K'D BY <i>S. L. T.</i>	REL- 644
REVISED	

Sec. 17

T. 8 N. R. 12 W

Sec. 8

Sec. 5

DIST	COUNTY	ROUTE	POST MILES	SHEET NO.	TOTAL SHEETS
07	L.A.	14	70.0/77.0	6	6

pg 73

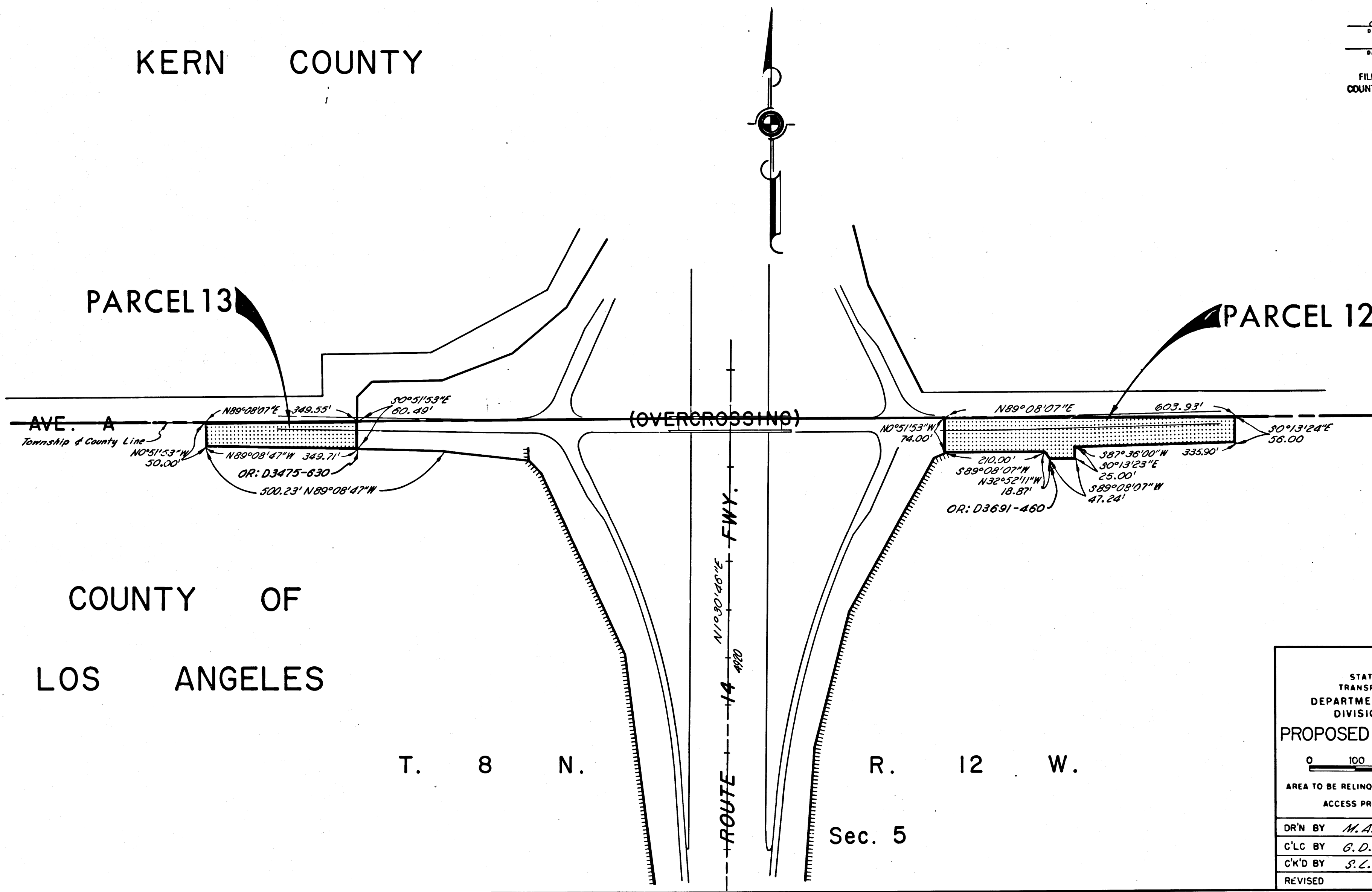
KERN COUNTY

J.W. Hamman
DEPUTY DISTRICT ENGINEER
MAR. 14, 1968
DATE

FILED WITH LOS ANGELES
COUNTY RECORDER, RAY E. LEE
MAR 21 1968

PARCEL 13

PARCEL 12



COUNTY OF
LOS ANGELES

T. 8 N.

R. 12 W.

Sec. 5

STATE OF CALIFORNIA
TRANSPORTATION AGENCY
DEPARTMENT OF PUBLIC WORKS
DIVISION OF HIGHWAYS

PROPOSED RELINQUISHMENT

0 100 200 300 400

AREA TO BE RELINQUISHED SHOWN THUS

ACCESS PROHIBITED

DR'N BY	M.A.C.	R/W MAP NO.	F1083
C'LC BY	G.D.W.	REF. MAP NO.	172-12
C'K'D BY	S.L.T.	REL-	644
REVISED			