

DIST	COUNTY	ROUTE	POST MILES	SHEET NO.	TOTAL SHEETS
07	L.A.	10	21.7/24.8	1	16

STATE OF CALIFORNIA
 TRANSPORTATION AGENCY
 DEPARTMENT OF PUBLIC WORKS
 DIVISION OF HIGHWAYS

**RIGHT OF WAY MAPS OF
 STATE HIGHWAY**

J. J. Lammick
 DEPUTY DISTRICT ENGINEER
 Apr. 4, 1968
 DATE

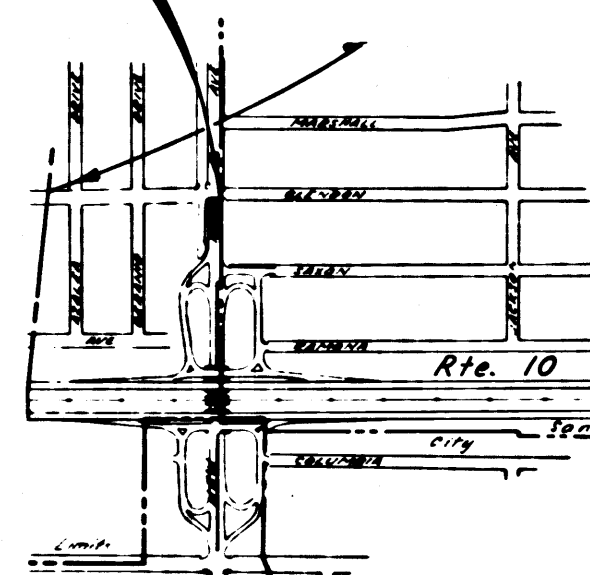
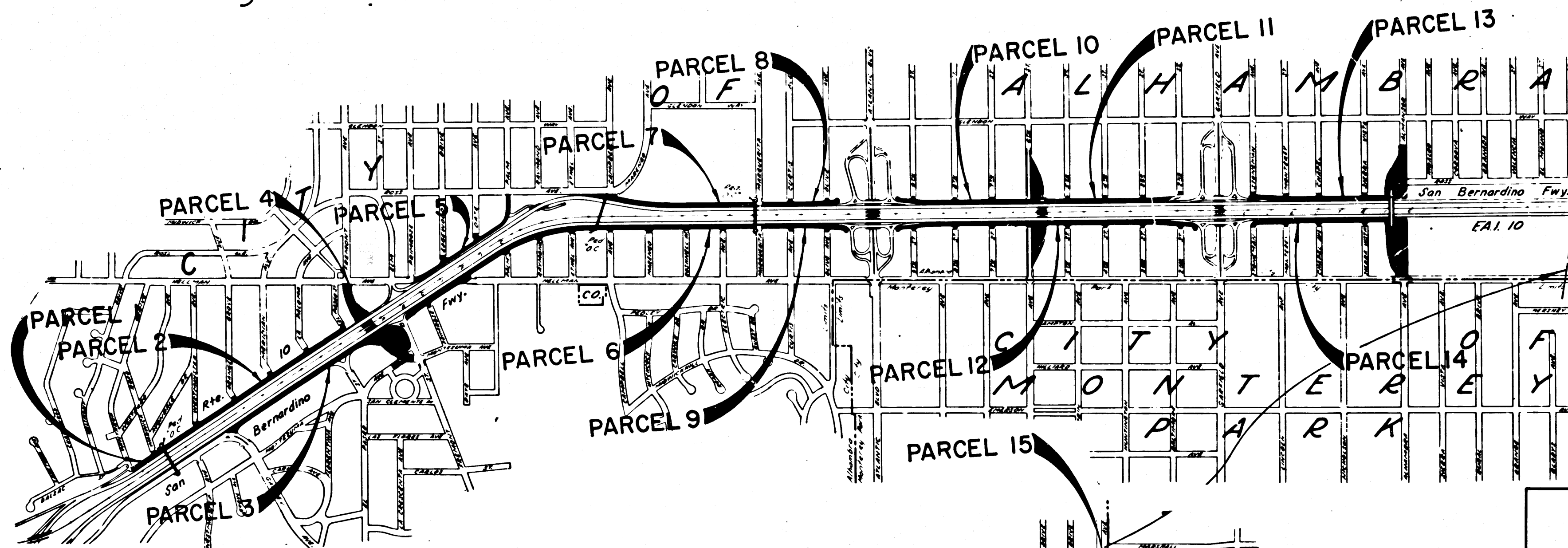
1896

FILED
 AT REQUEST OF
 DEPT. OF PUBLIC WORKS
 APR. 8, 1968
 58 MIN. 9 AM.

IN BOOK 6
 AT PAGE 76

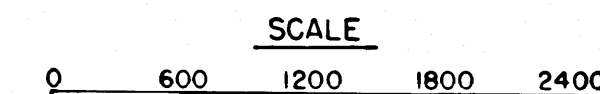
OF STATE HIGHWAY MAPS
 LOS ANGELES COUNTY, CALIF.
 RAY E. LEE
 COUNTY REGISTRAR

In the City of Alhambra between
 Winthrop Drive and New Ave.



STATE OF CALIFORNIA
 TRANSPORTATION AGENCY
 DEPARTMENT OF PUBLIC WORKS
 DIVISION OF HIGHWAYS

PROPOSED RELINQUISHMENT



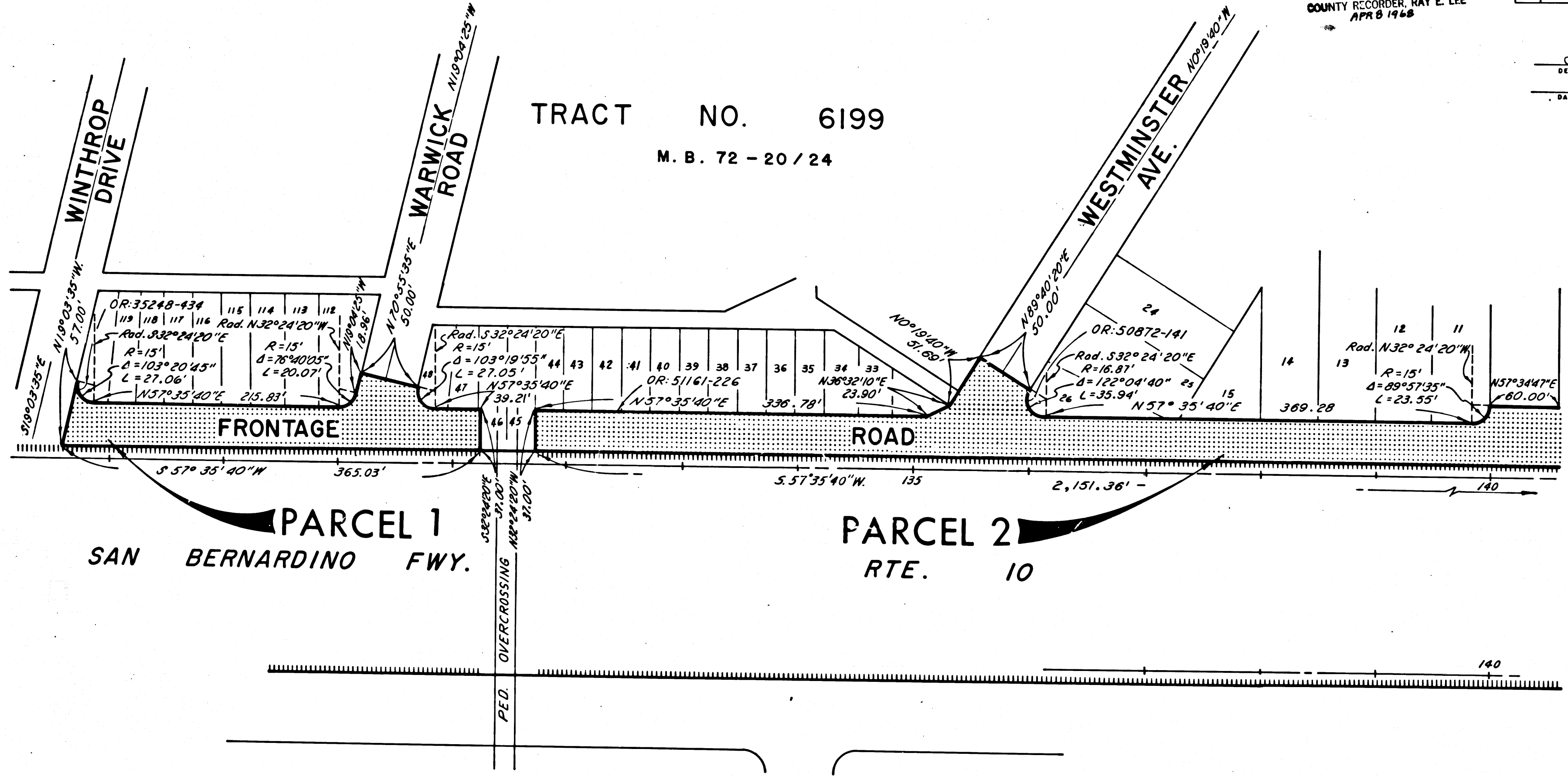
DR'N BY	M.A.C.	R/W MAP NO. F-1852, F-1853 F-1854, F-1855
C'LC BY	M.M.	REF. MAP NO. 108-12 109-6 110-20
C'K'D BY	S.L.T.	REL- 619
REVISED		

DIST	COUNTY	ROUTE	POST MILES	SHEET NO.	TOTAL SHEETS
07	L.A.	10	21.7/24.8	2	16

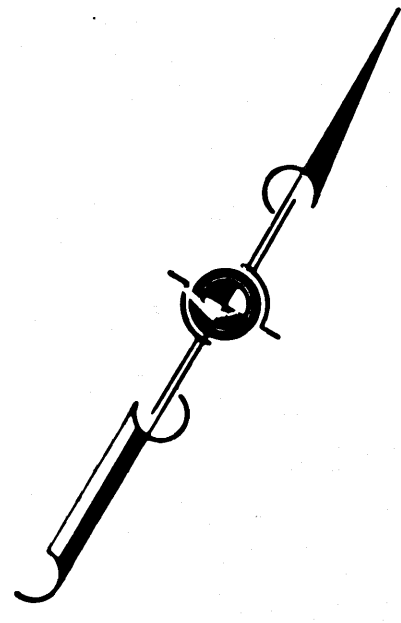
FILED WITH LOS ANGELES COUNTY RECORDER, RAY E. LEE
APR 8 1968

[Signature]
DEPUTY DISTRICT ENGINEER
DATE Apr. 4, 1968

TRACT NO. 6199
M. B. 72 - 20 / 24



CITY OF ALHAMBRA



INTERSTATE
STATE OF CALIFORNIA
TRANSPORTATION AGENCY
DEPARTMENT OF PUBLIC WORKS
DIVISION OF HIGHWAYS

PROPOSED RELINQUISHMENT

0 50 100 150 200

AREA TO BE RELINQUISHED SHOWN THUS

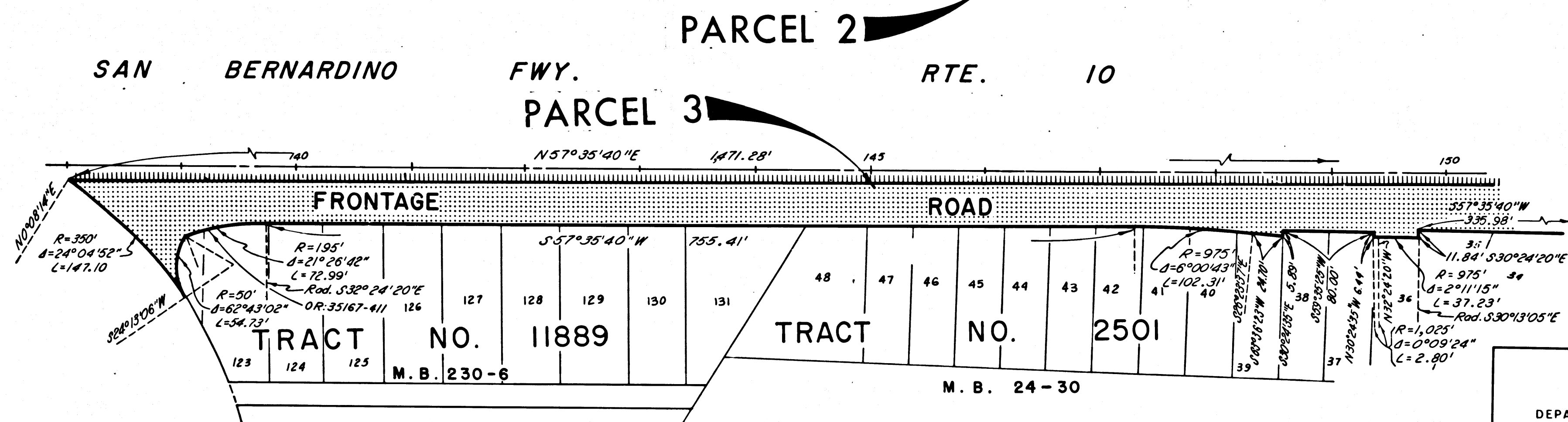
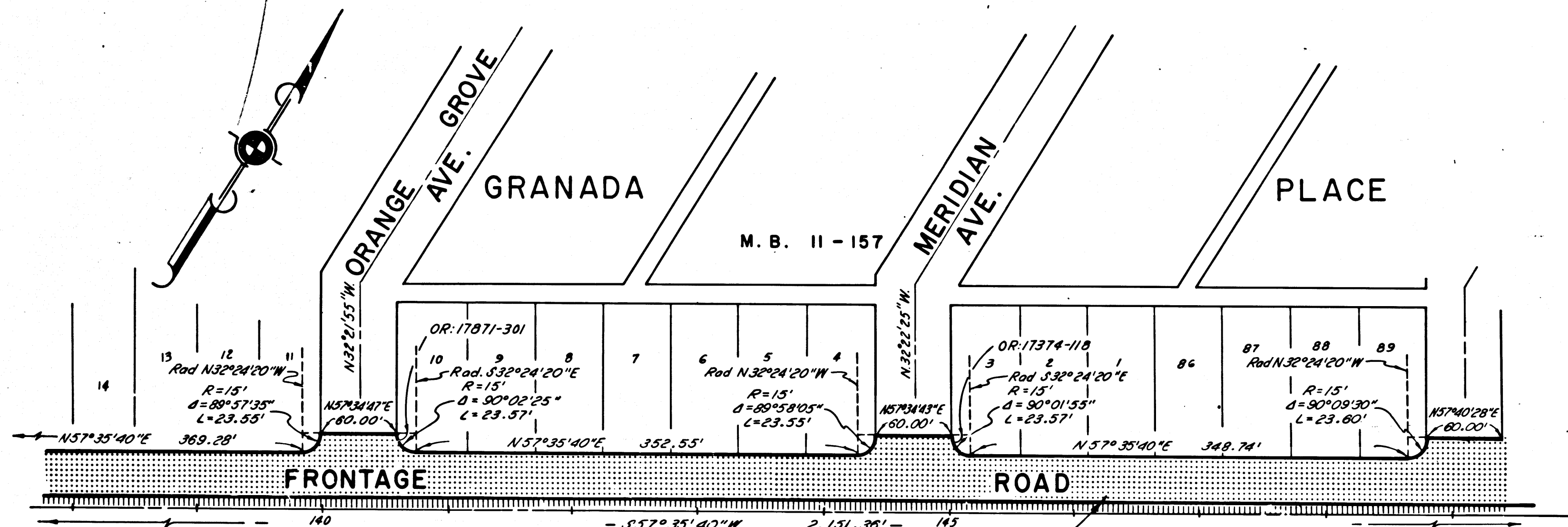
ACCESS PROHIBITED

DR'N BY M.A.C.	R/W MAP NO. F-1852
C'LC BY M.M.	REF. MAP NO. 108-12
C'K'D BY S.L.T.	REL- 619
REVISED	

DIST	COUNTY	ROUTE	POST MILES	SHEET NO.	TOTAL SHEETS
07	L.A.	10	21.7/24.8	3	16

J. H. Lamm
 DEPUTY DISTRICT ENGINEER
 DATE Apr. 4, 1968

FILED WITH LOS ANGELES
 COUNTY RECORDER, RAY E. LEE
 APR 9 1968



CITY OF ALHAMBRA

INTERSTATE
 STATE OF CALIFORNIA
 TRANSPORTATION AGENCY
 DEPARTMENT OF PUBLIC WORKS
 DIVISION OF HIGHWAYS

PROPOSED RELINQUISHMENT

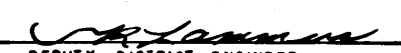
0 50 100 150 200

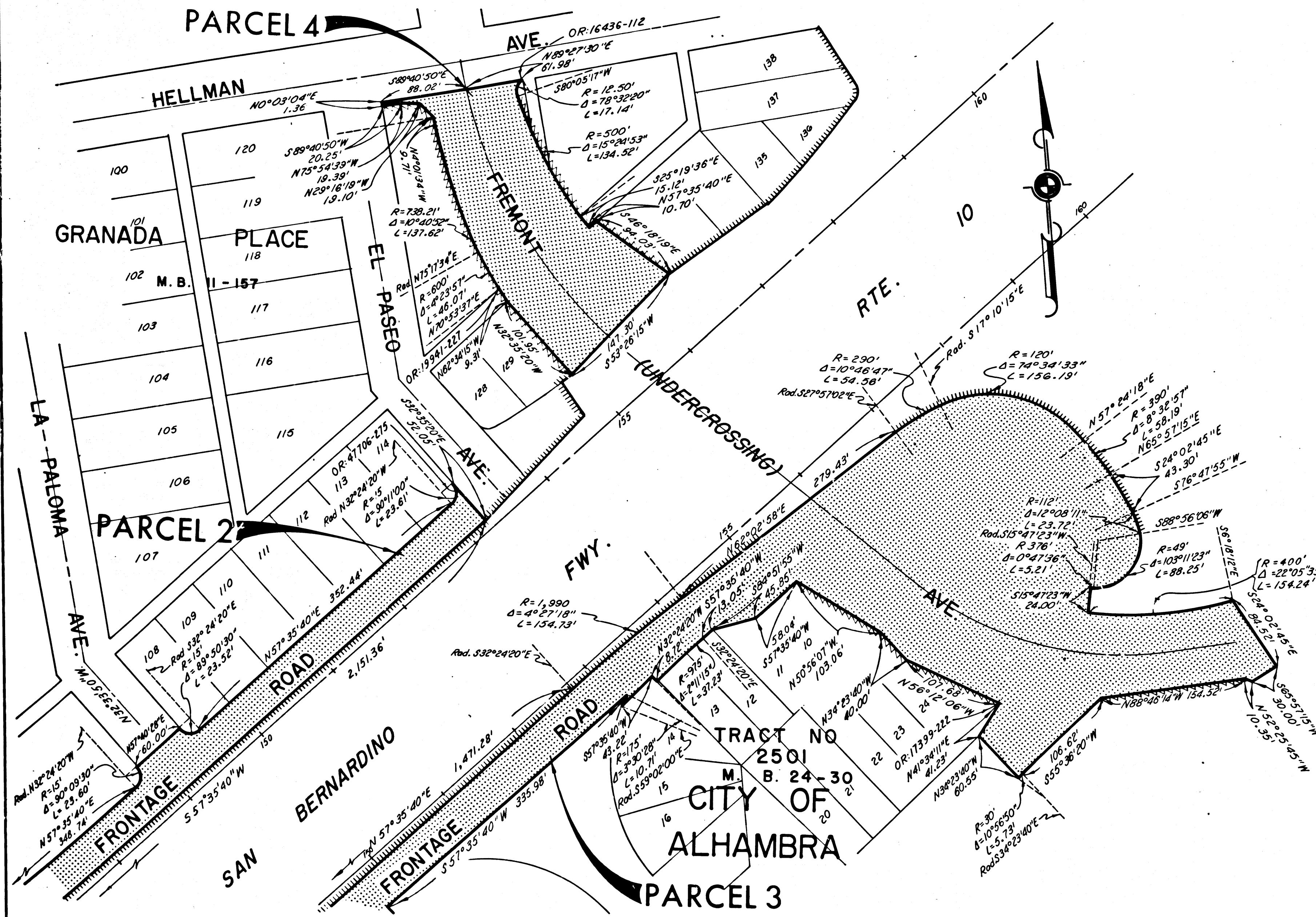
AREA TO BE RELINQUISHED SHOWN THUS

ACCESS PROHIBITED

DR'N BY <i>M.A.C.</i>	R/W MAP NO. <i>F-1852</i>
C'LC BY <i>M.M.</i>	REF. MAP NO. <i>108-12</i>
C'K'D BY <i>J.L.T.</i>	REL-619
REVISED	




DIST	COUNTY	ROUTE	POST MILES	SHEET NO.	TOTAL SHEETS
07	L.A.	10	21.7/24.8	4	16


 DEPUTY DISTRICT ENGINEER
 DATE Apr. 4, 1968
 FILED WITH LOS ANGELES COUNTY RECORDER, RAY E. LEE
 APR 8 1968



INTERSTATE
 STATE OF CALIFORNIA
 TRANSPORTATION AGENCY
 DEPARTMENT OF PUBLIC WORKS
 DIVISION OF HIGHWAYS
PROPOSED RELINQUISHMENT

0 50 100 150 200

AREA TO BE RELINQUISHED SHOWN THUS 
 ACCESS PROHIBITED 
 RELINQUISHED ACCESS RIGHTS 

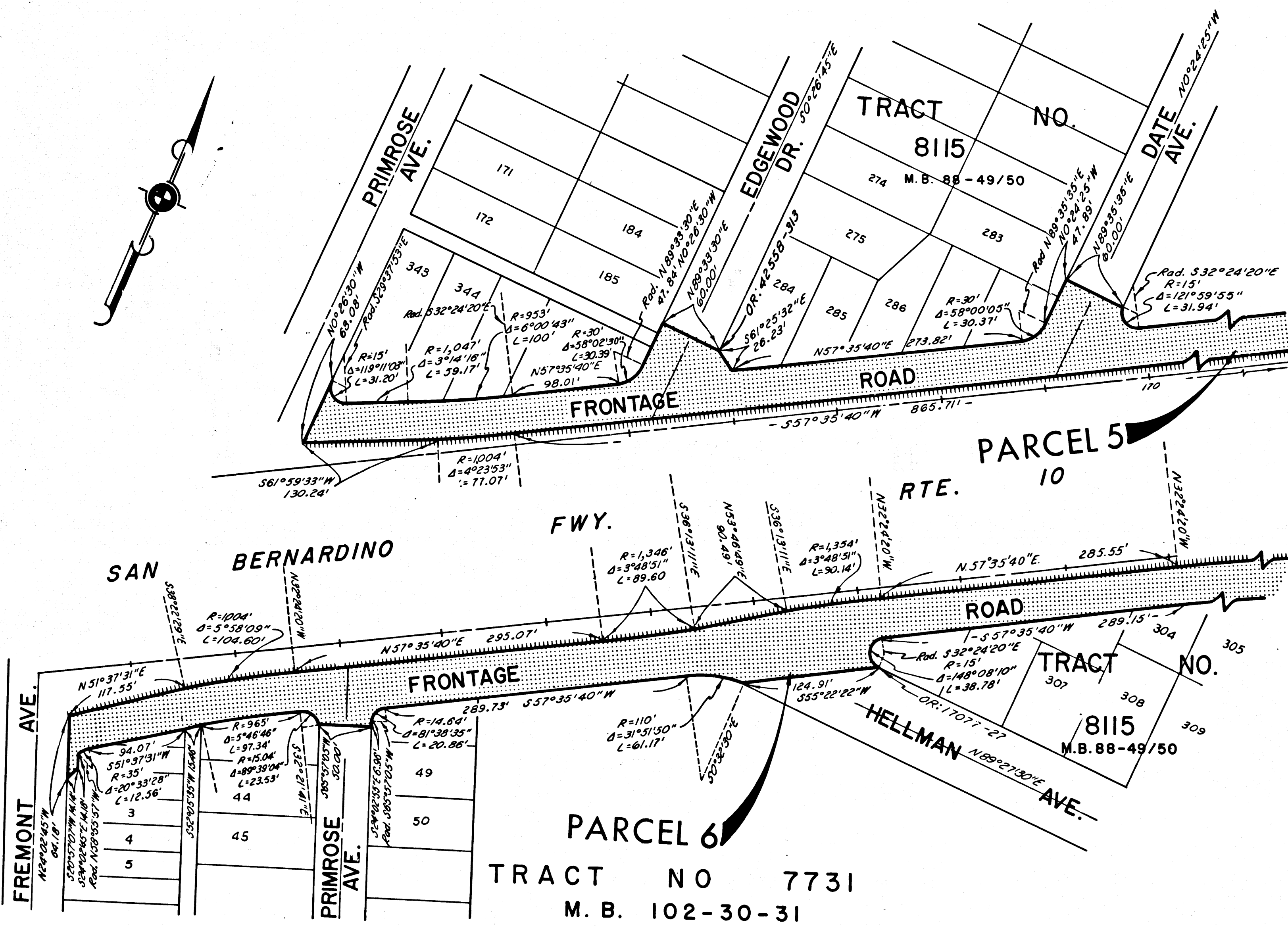
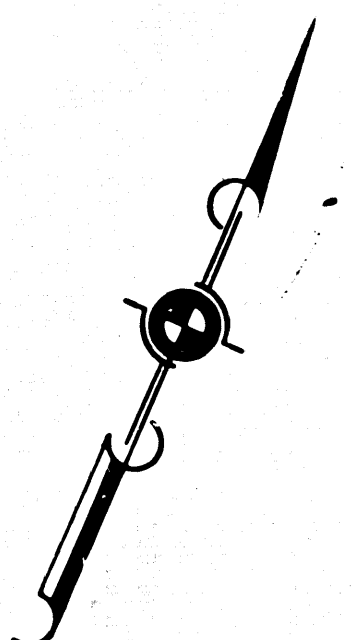
DR'N BY <i>M.A.C.</i>	R/W MAP NO. <i>F-1052</i>
C'LC BY <i>M.M.</i>	REF. MAP NO.
C'K'D BY <i>S.L.T.</i>	REL-619
REVISED	

DIST	COUNTY	ROUTE	POST MILES	SHEET NO.	TOTAL SHEETS
07	L.A.	10	21.7248	5	16

CITY OF ALHAMBRA

John J. ...
 DEPUTY DISTRICT ENGINEER
 DATE *Apr. 4, 1968*

FILED WITH LOS ANGELES
 COUNTY RECORDER, RAY E. LEE
 APR 6 1968



INTERSTATE
 STATE OF CALIFORNIA
 TRANSPORTATION AGENCY
 DEPARTMENT OF PUBLIC WORKS
 DIVISION OF HIGHWAYS

PROPOSED RELINQUISHMENT

0 50 100 150 200

AREA TO BE RELINQUISHED SHOWN THUS

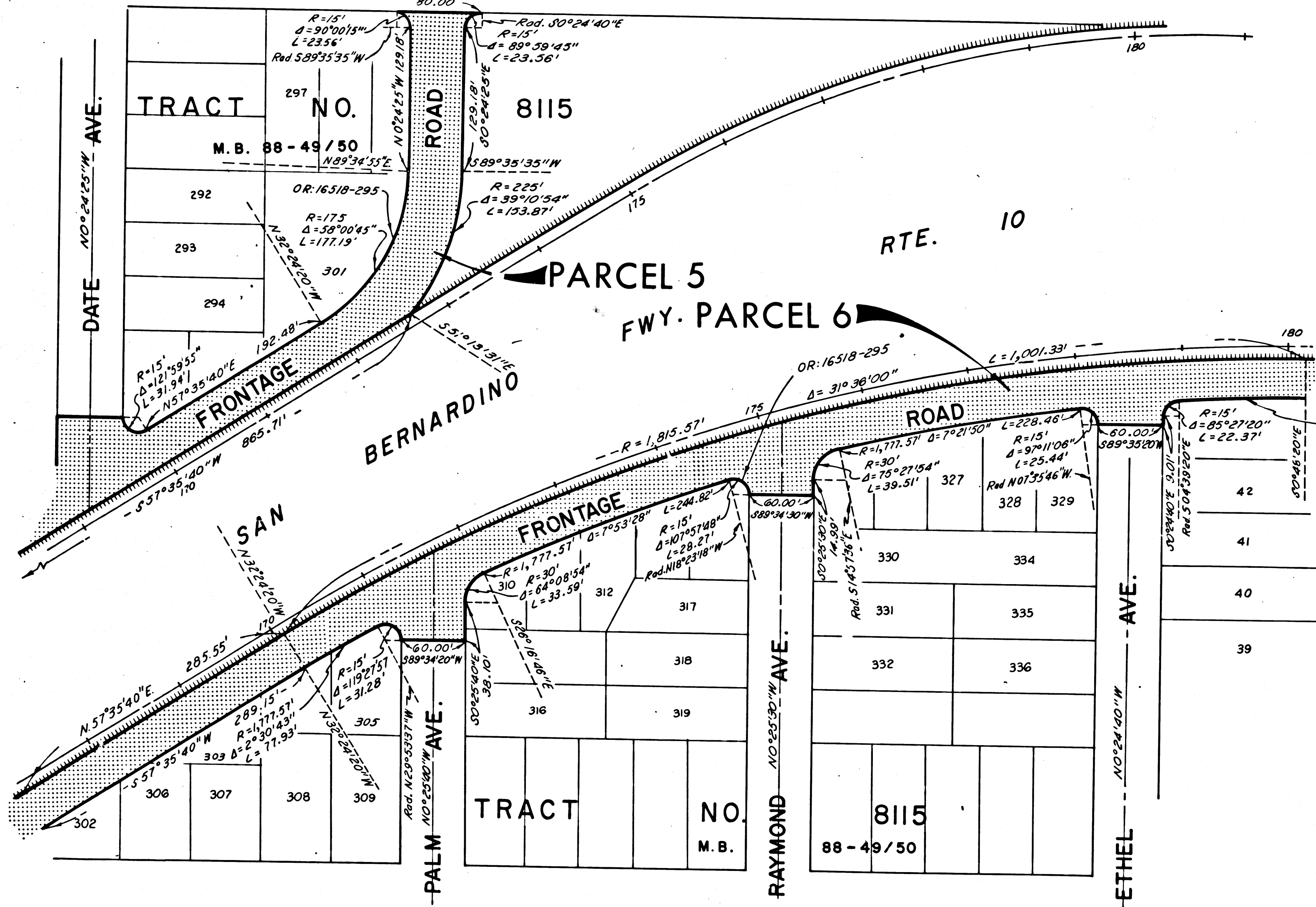
ACCESS PROHIBITED

DR'N BY M.A.C.	R/W MAP NO. F-1853
C'LC BY M.M.	REF. MAP NO. 108-12 109-6
C'K'D BY S.L.T.	REL-619
REVISED	

DIST	COUNTY	ROUTE	POST MILES	SHEET NO.	TOTAL SHEETS
07	L.A.	10	21.7/24.8	6	16

CITY OF ALHAMBRA

ROSS AVE. N 89° 35' 20" E 80.00



J.H. [Signature]
DEPUTY DISTRICT ENGINEER
DATE Apr. 4, 1968

FILED WITH LOS ANGELES
COUNTY RECORDER, RAY E. LEE
APR 8 1968



INTERSTATE
STATE OF CALIFORNIA
TRANSPORTATION AGENCY
DEPARTMENT OF PUBLIC WORKS
DIVISION OF HIGHWAYS

PROPOSED RELINQUISHMENT

0 50 100 150 200

AREA TO BE RELINQUISHED SHOWN THUS [Stippled Box]

ACCESS PROHIBITED [Hatched Box]

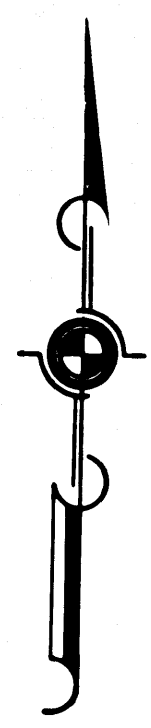
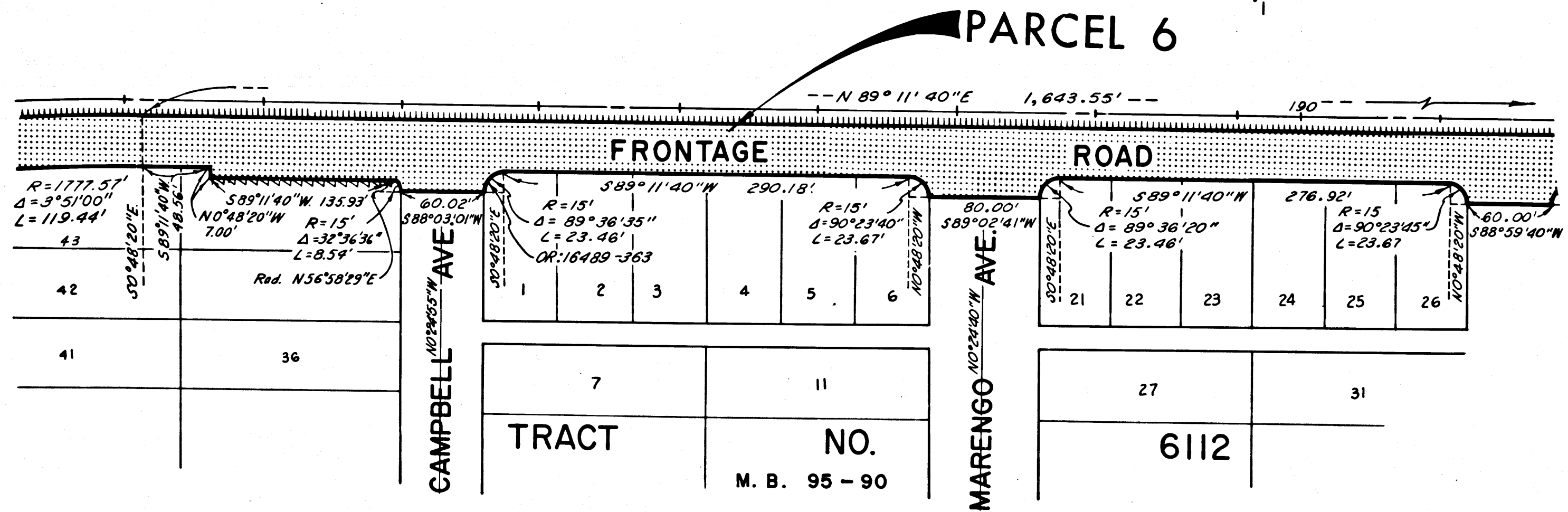
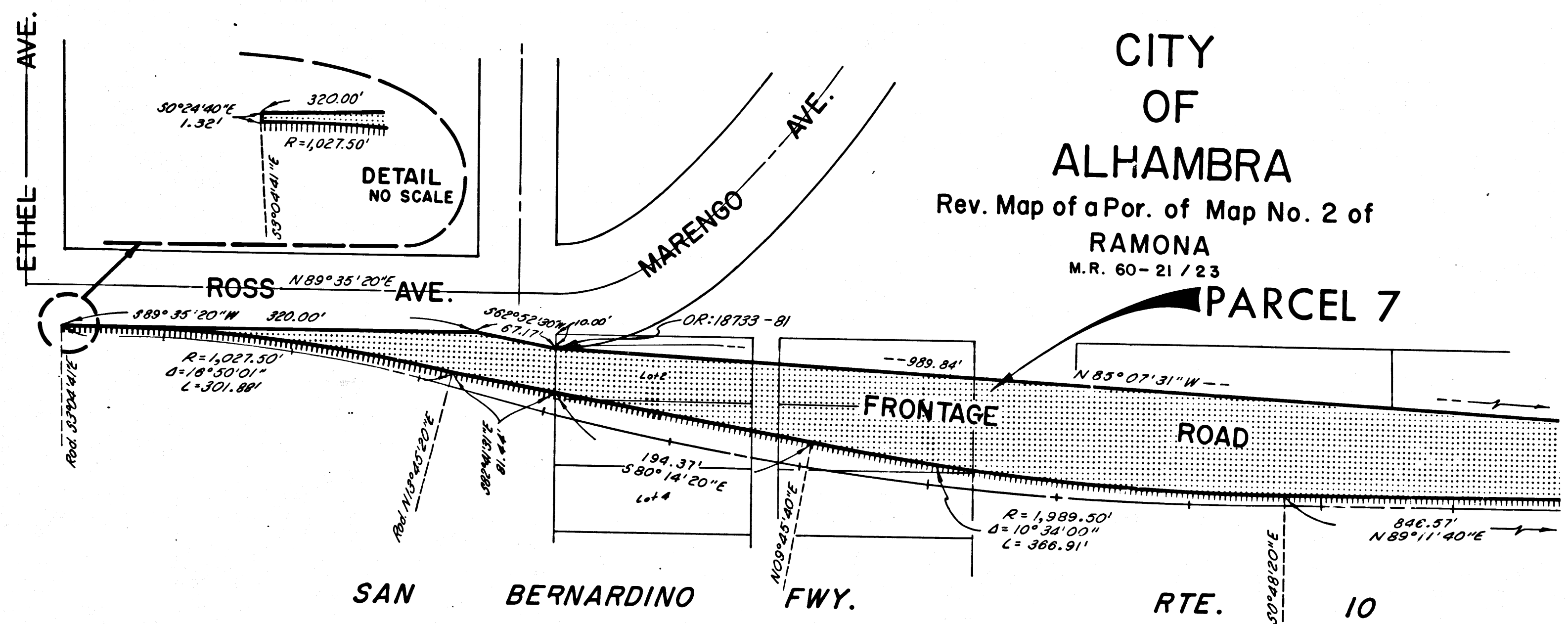
DR'N BY M.A.C.	R/W MAP NO. F-1853
C'LC BY M.M.	REF. MAP NO. 109-6
C'K'D BY S.L.T.	REL-619
REVISED	

DIST	COUNTY	ROUTE	POST MILES	SHEET NO.	TOTAL SHEETS
07	L.A.	10	21.7/24.8	7	16

J. M. Samuel
 DEPUTY DISTRICT ENGINEER
 DATE Apr. 4, 1968

FILED WITH LOS ANGELES
 COUNTY RECORDER, RAY E. LEE
 APR 8 1968

CITY OF ALHAMBRA
 Rev. Map of a Por. of Map No. 2 of RAMONA
 M.R. 60-21/23



INTERSTATE
 STATE OF CALIFORNIA
 TRANSPORTATION AGENCY
 DEPARTMENT OF PUBLIC WORKS
 DIVISION OF HIGHWAYS

PROPOSED RELINQUISHMENT

0 50 100 150 200

AREA TO BE RELINQUISHED SHOWN THUS

ACCESS PROHIBITED

RELINQUISHED ACCESS RIGHTS

DR'N BY M.A.C.	R/W MAP NO. F-1853
C'LC BY M.M.	REF. MAP NO. 109-6
C'K'D BY S.L.T.	REL-619
REVISED	

TRACT	NO.
7	11
21	22
23	24
25	26
27	31

M. B. 95 - 90

DIST	COUNTY	ROUTE	POST MILES	SHEET NO.	TOTAL SHEETS
07	L.A.	10	21.7/24.8	8	16

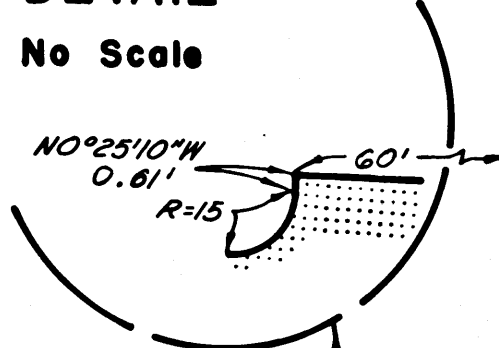
CITY OF ALHAMBRA

Rev. Map of a Por. of Map No. 2 of
RAMONA
M. R. 59-41

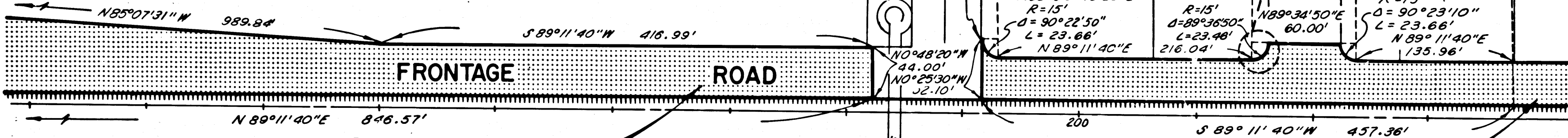
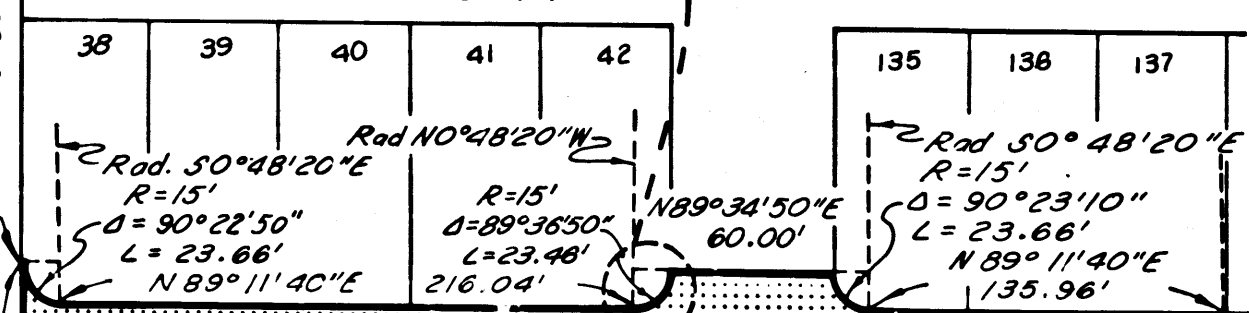
J. L. Lee
DEPUTY DISTRICT ENGINEER
Apr. 4, 1968
DATE

FILED WITH LOS ANGELES
COUNTY RECORDER, RAY E. LEE
APR 8 1968

DETAIL
No Scale



TRACT NO 6129 M.R. 63-77

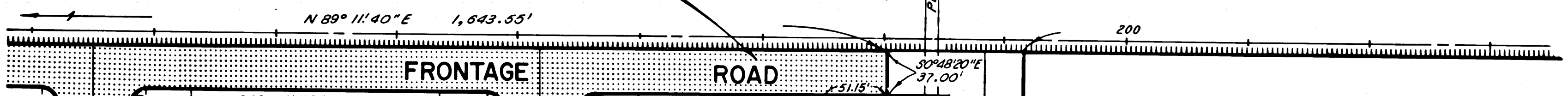


PARCEL 7

PARCEL 8

SAN BERNARDINO F.W.Y. RTE. 10

PARCEL 6

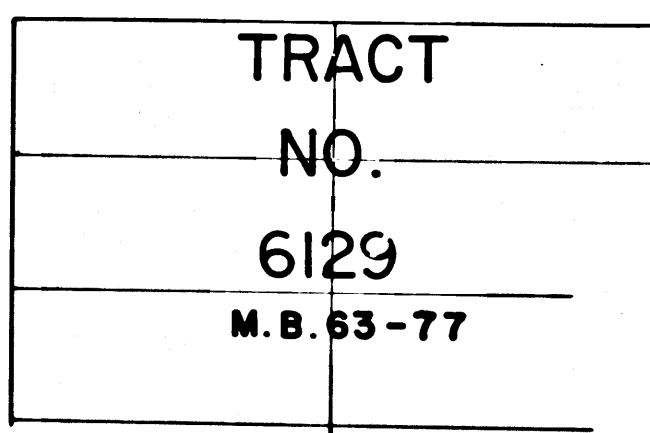
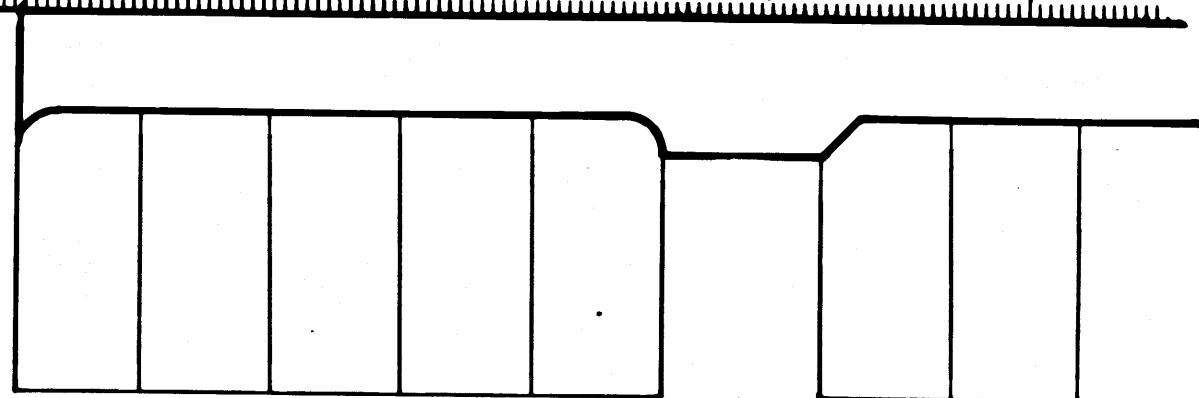
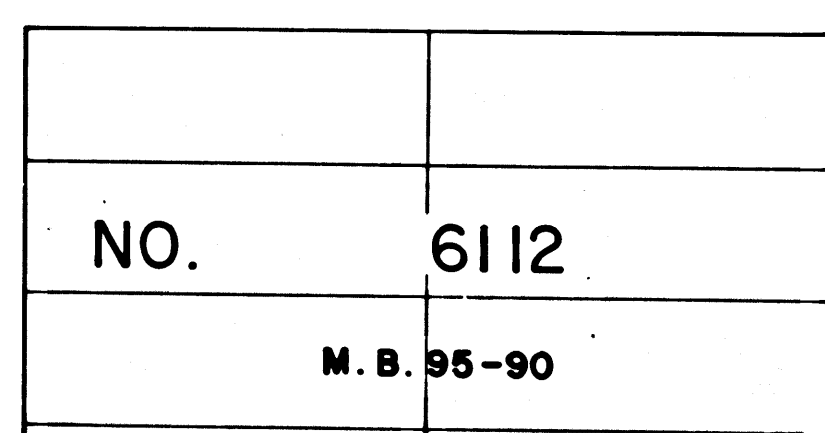
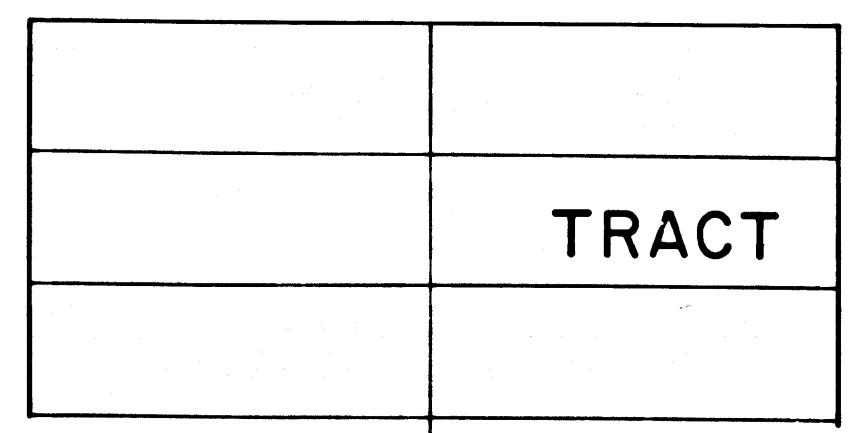
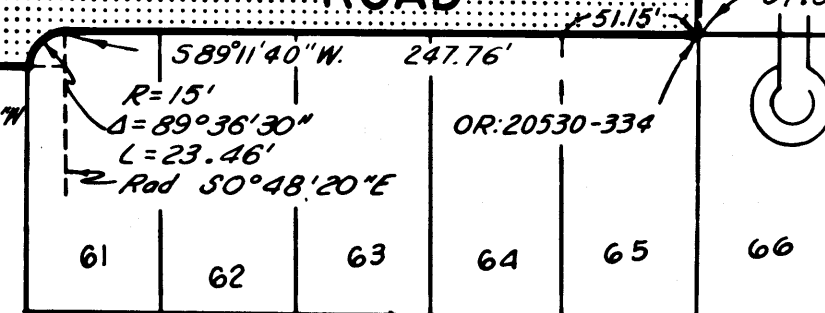
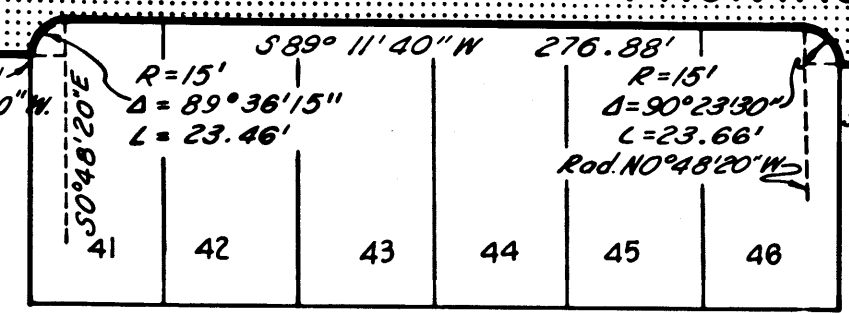


FRONTAGE ROAD

BUSHNELL AVE.

ELECTRIC AVE.

MARGUERITA AVE.



INTERSTATE
STATE OF CALIFORNIA
TRANSPORTATION AGENCY
DEPARTMENT OF PUBLIC WORKS
DIVISION OF HIGHWAYS

PROPOSED RELINQUISHMENT

0 50 100 150 200

AREA TO BE RELINQUISHED SHOWN THUS

ACCESS PROHIBITED

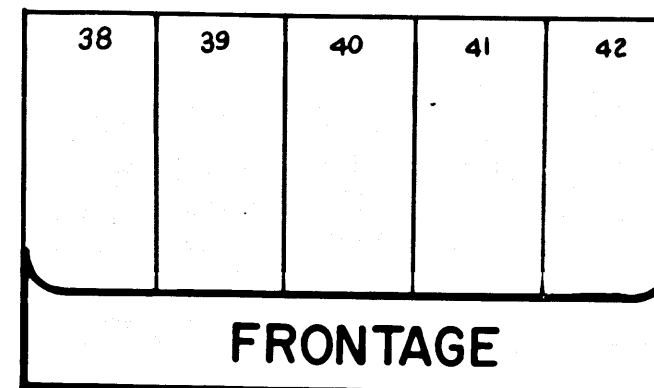
DR'N BY M.A.C.	R/W MAP NO. F-1853
C'LC BY M.M.	REF. MAP NO. 109-6
CK'D BY S.L.T.	REL-619
REVISED Rev. 10-31-67	

DIST	COUNTY	ROUTE	POST MILES	SHEET NO.	TOTAL SHEETS
07	L.A.	10	21.7/24.8	9	16

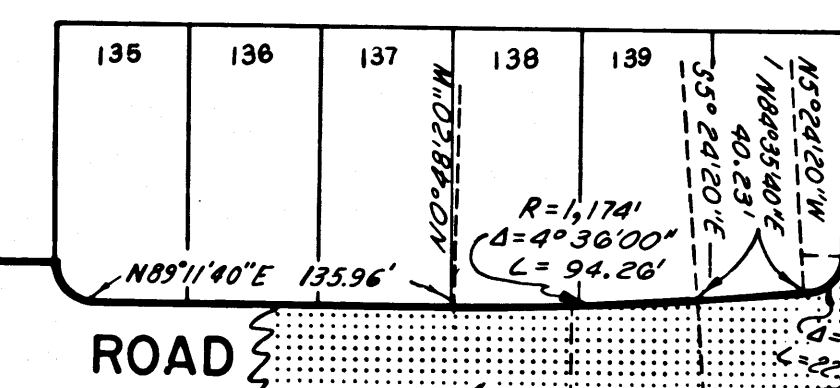
CITY OF ALHAMBRA

TRACT NO 6129

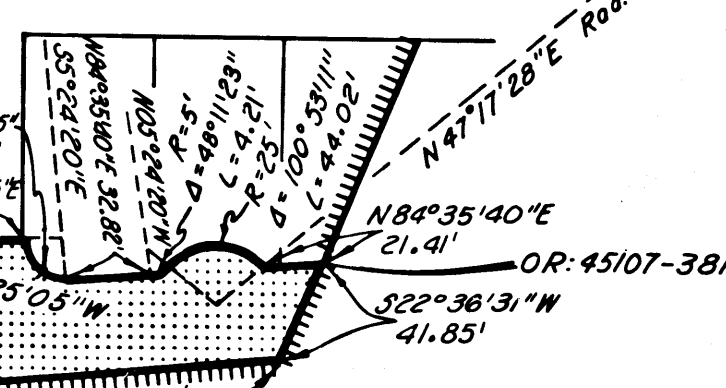
M. R. 63-77



AVE.



AVE.



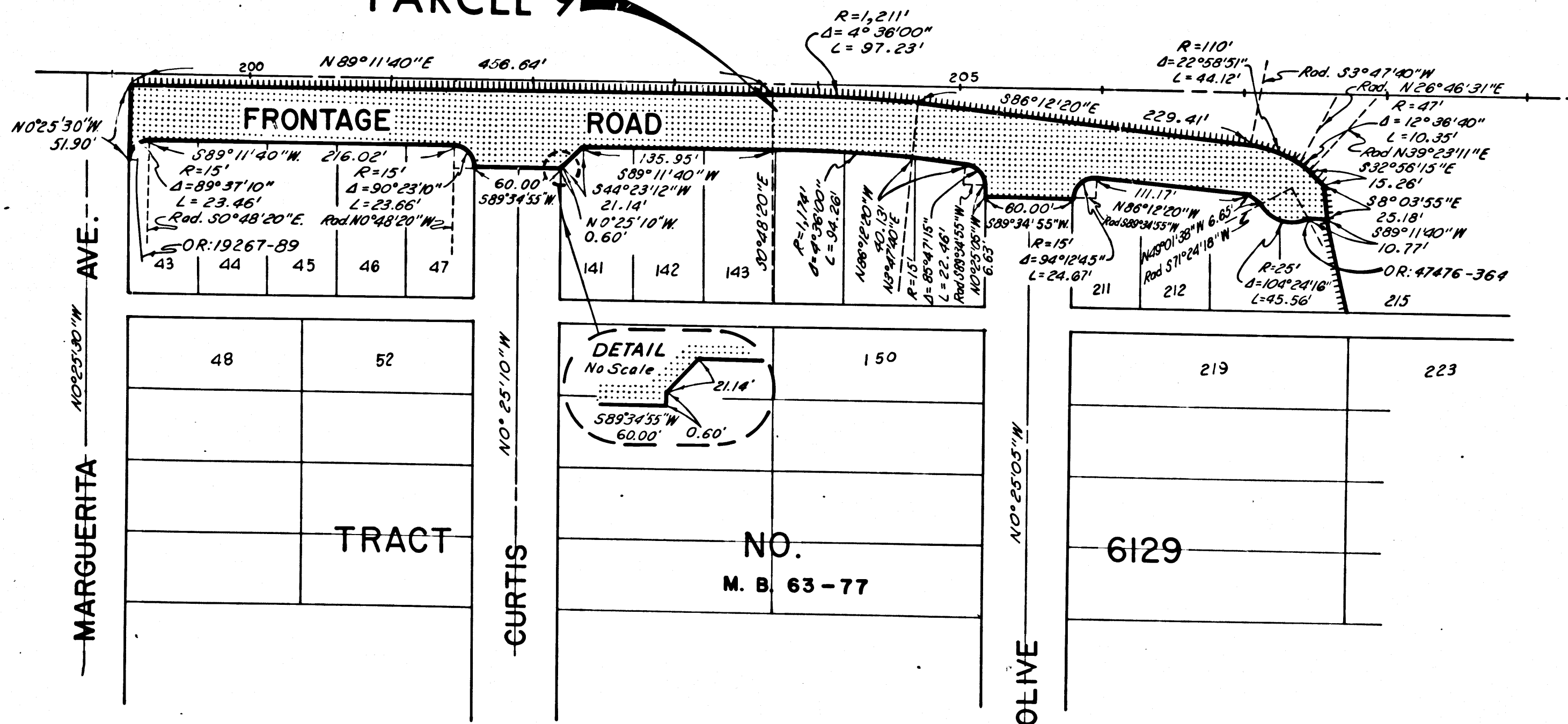
FRONTAGE ROAD

FRONTAGE ROAD

PARCEL 8

SAN BERNARDINO F.WY. ROUTE 10

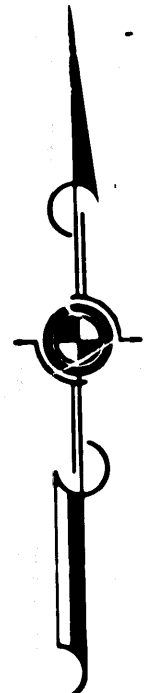
PARCEL 9



MARGUERITA AVE.

CURTIS

OLIVE



INTERSTATE
STATE OF CALIFORNIA
TRANSPORTATION AGENCY
DEPARTMENT OF PUBLIC WORKS
DIVISION OF HIGHWAYS

PROPOSED RELINQUISHMENT

0 50 100 150 200

AREA TO BE RELINQUISHED SHOWN THUS ACCESS PROHIBITED

DR'N BY	M.A.C.	R/W MAP NO.	F-1853
C'LC BY	M.M.	REF. MAP NO.	109-B
C'KD BY	S.L.T.	REL-619	
REVISED			

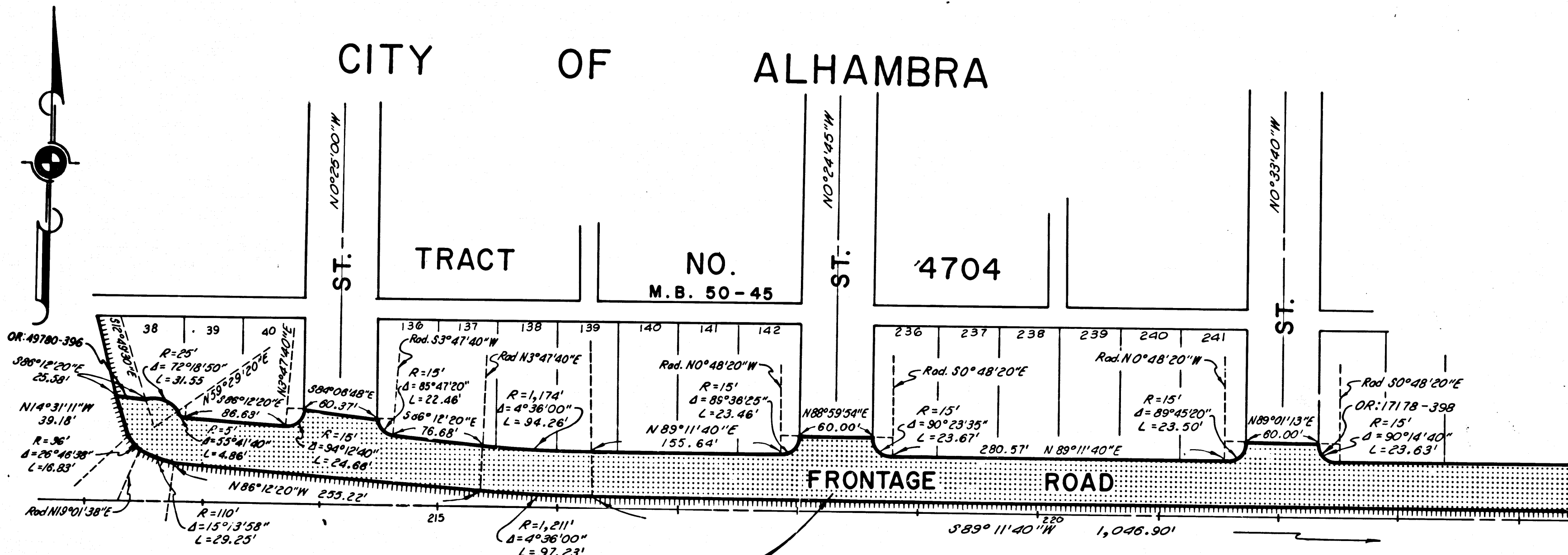
DIST	COUNTY	ROUTE	POST MILES	SHEET NO.	TOTAL SHEETS
07	L.A.	10	21.7248	10	16

[Signature]
 DEPUTY DISTRICT ENGINEER
 Apr. 4, 1968
 DATE

FILED WITH LOS ANGELES
 COUNTY RECORDER, RAY E. LEE
 APR 8 1968

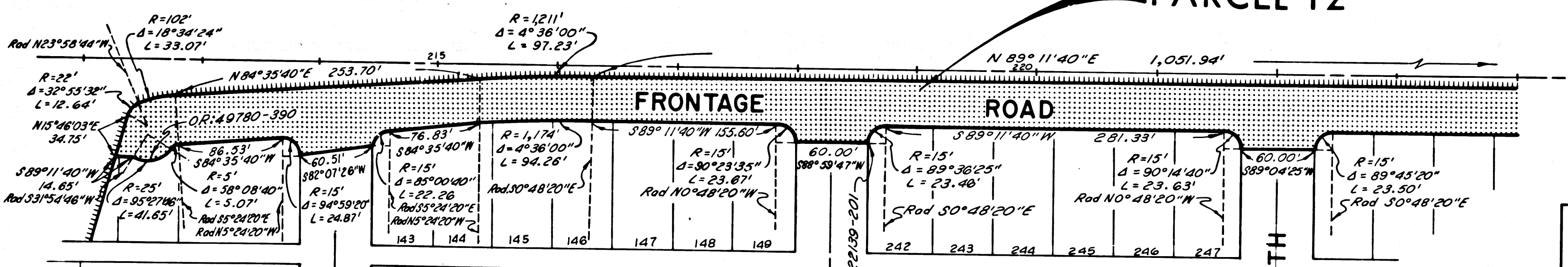
CITY OF ALHAMBRA

TRACT NO. 4704
 M.B. 50-45



SAN BERNARDINO ROUTE 10 PARCEL 12

TRACT NO. 4704
 M.B. 50-45



INTERSTATE
 STATE OF CALIFORNIA
 TRANSPORTATION AGENCY
 DEPARTMENT OF PUBLIC WORKS
 DIVISION OF HIGHWAYS

PROPOSED RELINQUISHMENT

0 50 100 150 200

AREA TO BE RELINQUISHED SHOWN THUS [Dotted Pattern]

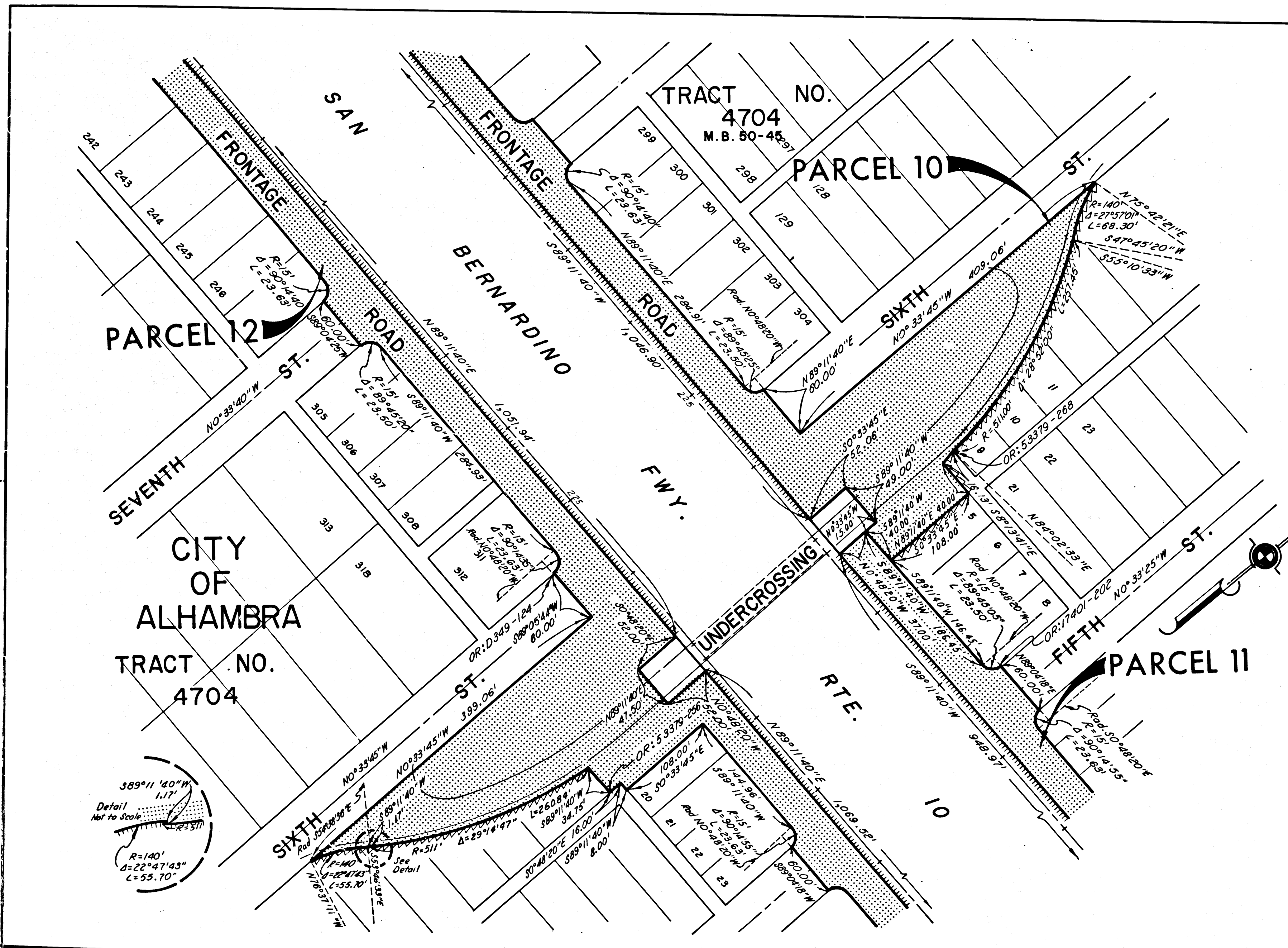
ACCESS PROHIBITED [Hatched Pattern]

DR'N BY	M.A.C.	R/W MAP NO.	F-1854
C'LC BY	M.M.	REF. MAP NO.	110-20
C'K'D BY	S.L.F.	REL-	619
REVISED			

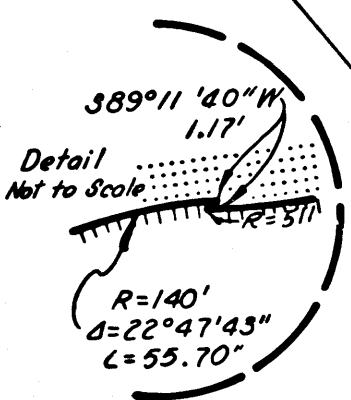
DIST	COUNTY	ROUTE	POST MILES	SHEET NO.	TOTAL SHEETS
07	L.A.	10	21.7/24.8	11	16

M.A.C.
 DEPUTY DISTRICT ENGINEER
 Apr. 4, 1968
 DATE

FILED WITH LOS ANGELES
 COUNTY RECORDER, RAY E. LEE
 APR 6 1968



CITY OF ALHAMBRA
 TRACT NO. 4704



INTERSTATE
 STATE OF CALIFORNIA
 TRANSPORTATION AGENCY
 DEPARTMENT OF PUBLIC WORKS
 DIVISION OF HIGHWAYS

PROPOSED RELINQUISHMENT

0 50 100 150 200

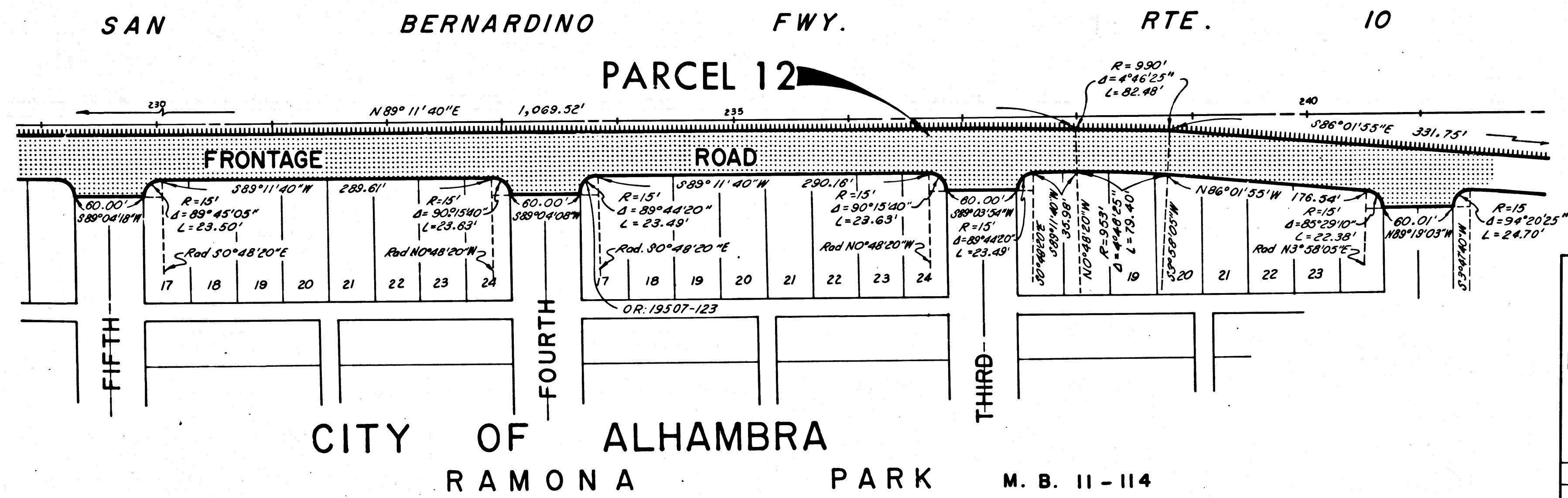
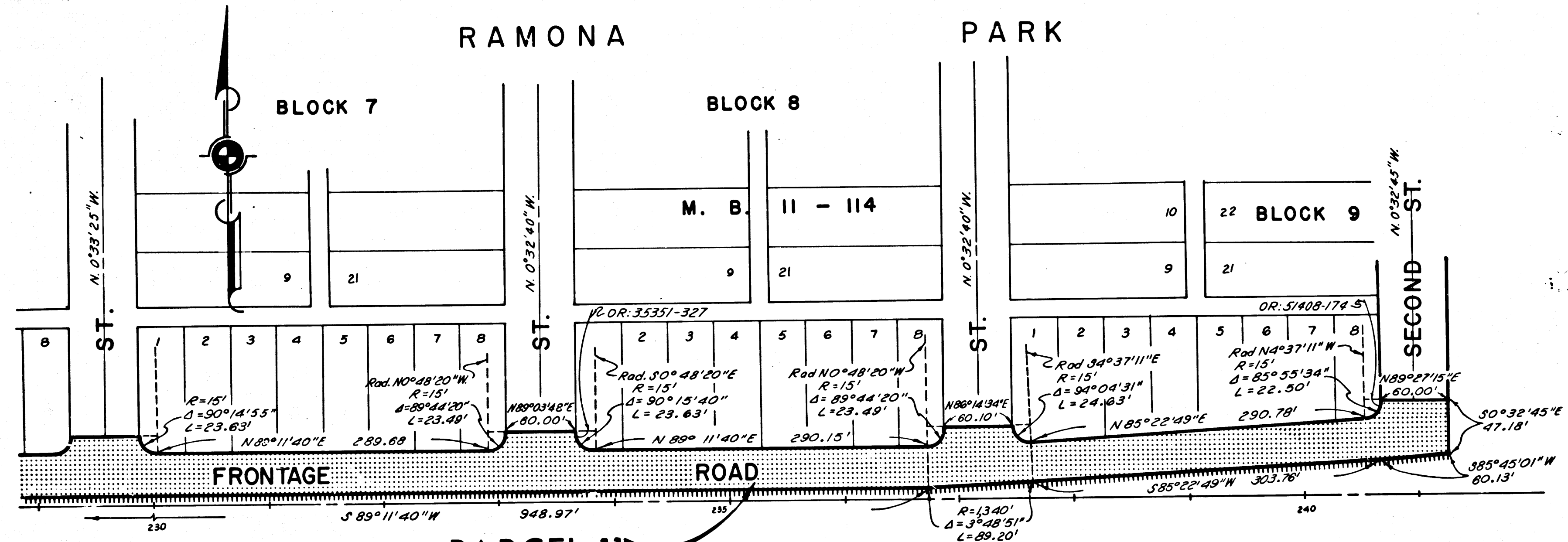
AREA TO BE RELINQUISHED SHOWN THUS [Stippled Area]
 ACCESS PROHIBITED [Hatched Area]
 RELINQUISHED ACCESS RIGHTS [Dashed Line]

DR'N BY	M.A.C.	R/W MAP NO.	F-1864
C'LG BY	M.M.	REF MAP NO.	110-20
C'K'D BY	S.L.T.	REL	619
REVISED			

DIST	COUNTY	ROUTE	POST MILES	SHEET NO.	TOTAL SHEETS
07	L.A.	10	21.7/24.8	12	16

J. L. ...
 DEPUTY DISTRICT ENGINEER
 Apr. 4, 1968
 DATE

FILED WITH LOS ANGELES
 COUNTY RECORDER, RAY E. LEE
 APR 6 1968



INTERSTATE
 STATE OF CALIFORNIA
 TRANSPORTATION AGENCY
 DEPARTMENT OF PUBLIC WORKS
 DIVISION OF HIGHWAYS

PROPOSED RELINQUISHMENT

0 50 100 150 200

AREA TO BE RELINQUISHED SHOWN THUS [Dotted Pattern]

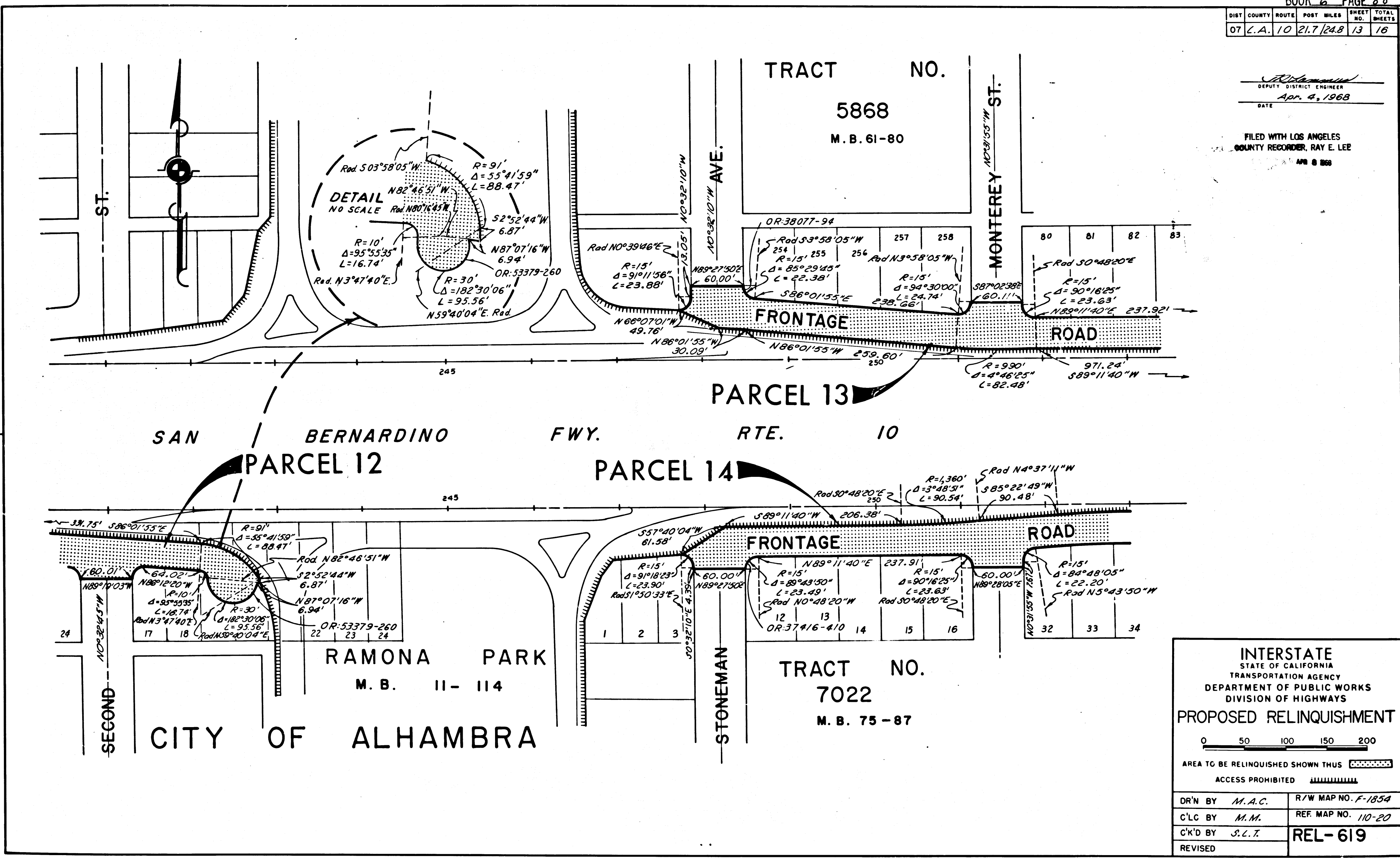
ACCESS PROHIBITED [Hatched Pattern]

DR'N BY	M. A. C.	R/W MAP NO.	F-1854
C'LC BY	M. M.	REF. MAP NO.	110-20
C'K'D BY	S. L. T.	REL-619	
REVISED			

DIST	COUNTY	ROUTE	POST MILES	SHEET NO.	TOTAL SHEETS
07	L.A.	10	21.7	24.8	13 16

W. J. ...
 DEPUTY DISTRICT ENGINEER
 Apr. 4, 1968
 DATE

FILED WITH LOS ANGELES
 COUNTY RECORDER, RAY E. LEE
 APR 8 1968



INTERSTATE
 STATE OF CALIFORNIA
 TRANSPORTATION AGENCY
 DEPARTMENT OF PUBLIC WORKS
 DIVISION OF HIGHWAYS

PROPOSED RELINQUISHMENT

0 50 100 150 200

AREA TO BE RELINQUISHED SHOWN THUS

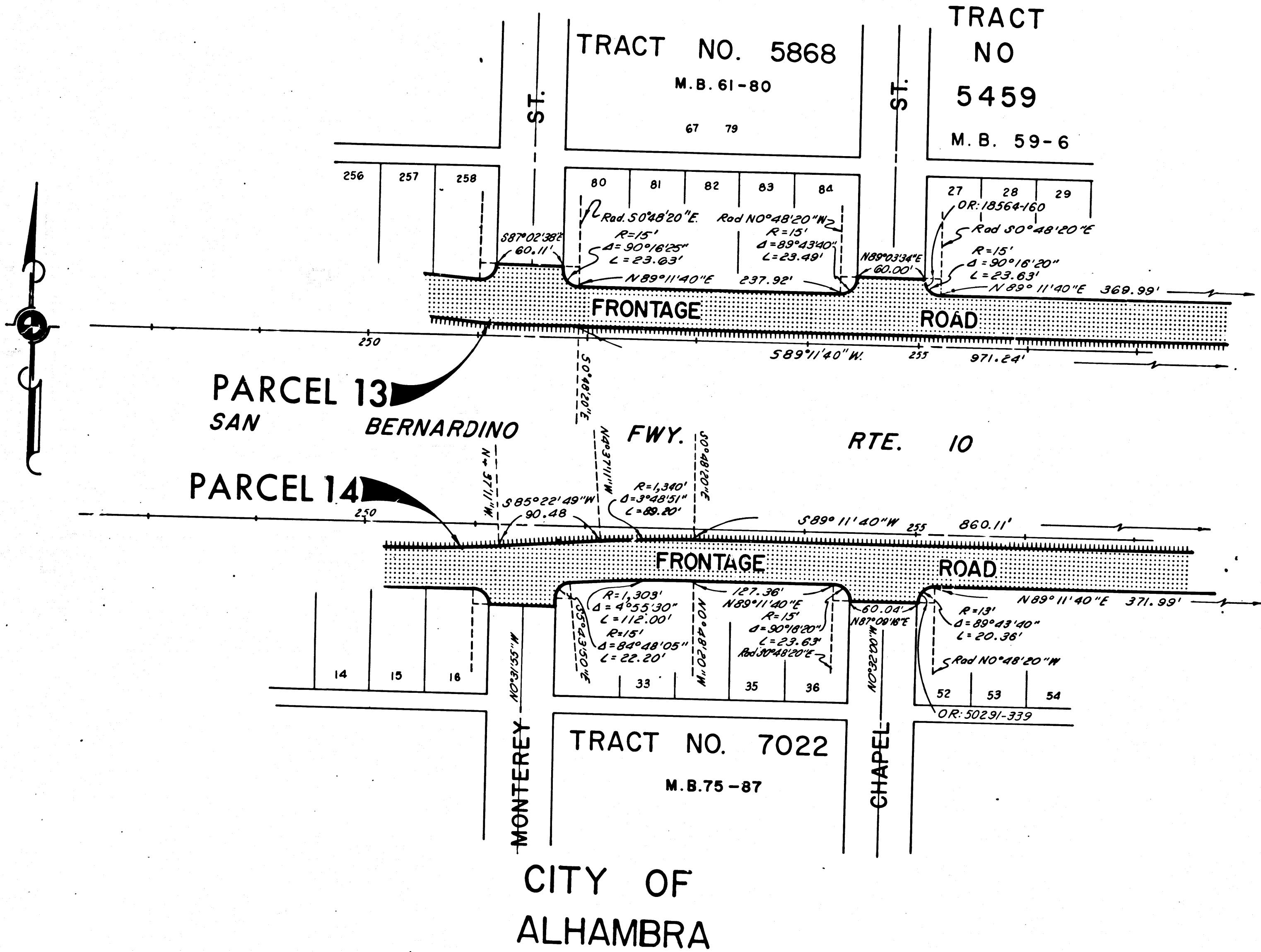
ACCESS PROHIBITED

DR'N BY	M.A.C.	R/W MAP NO.	F-1854
C'LC BY	M.M.	REF. MAP NO.	110-20
C'K'D BY	S.L.T.	REL-	619
REVISED			

DIST	COUNTY	ROUTE	POST MILE	SHEET NO.	TOTAL SHEETS
07	L.A.	10	21.7/24.8	14	16

DEPUTY DISTRICT ENGINEER
 DATE: Apr. 4, 1968

FILED WITH LOS ANGELES
 COUNTY RECORDER, RAY E. LEE
 APR 6 1968



INTERSTATE
 STATE OF CALIFORNIA
 TRANSPORTATION AGENCY
 DEPARTMENT OF PUBLIC WORKS
 DIVISION OF HIGHWAYS

PROPOSED RELINQUISHMENT

0 50 100 150 200

AREA TO BE RELINQUISHED SHOWN THUS [Dotted Pattern]

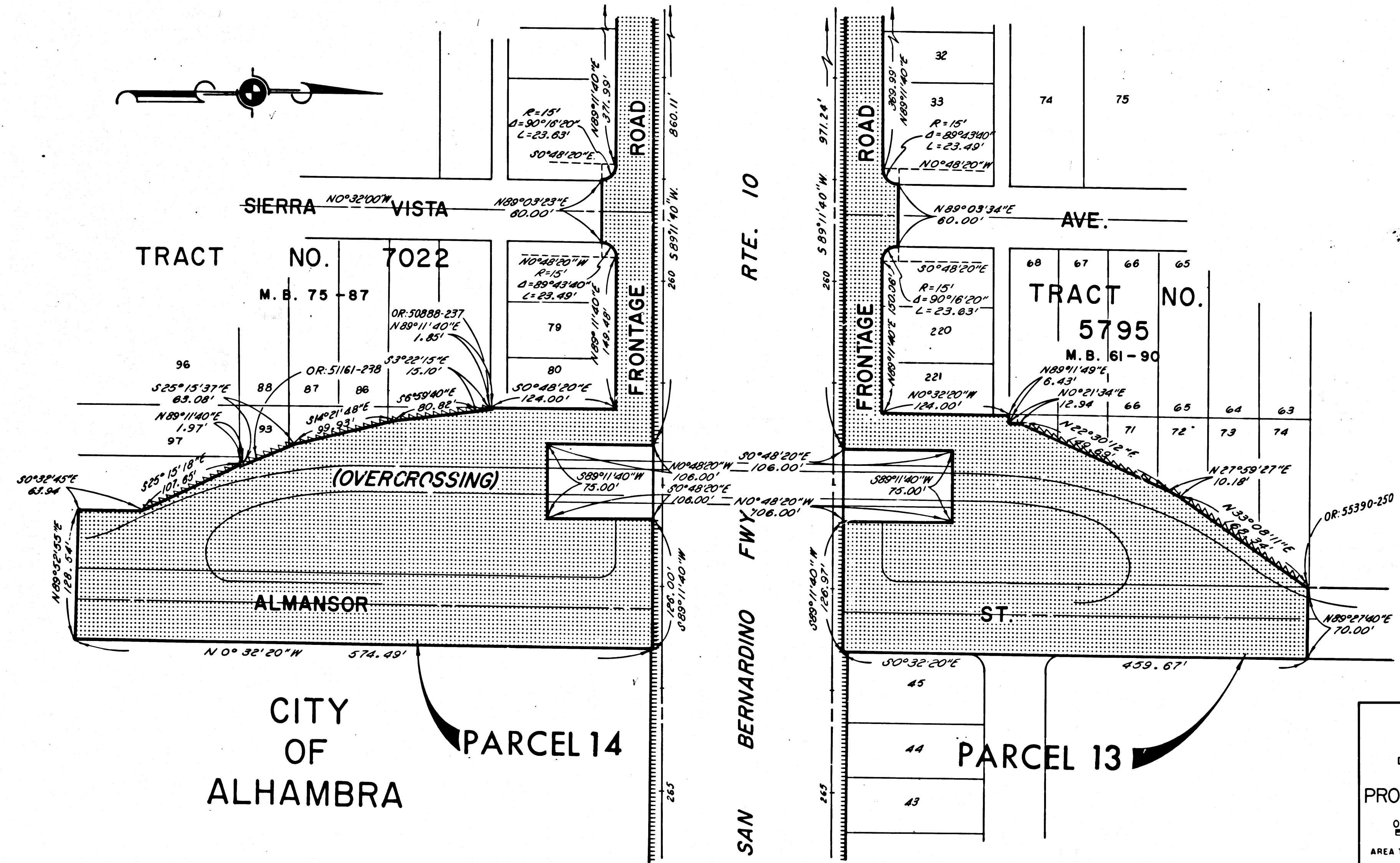
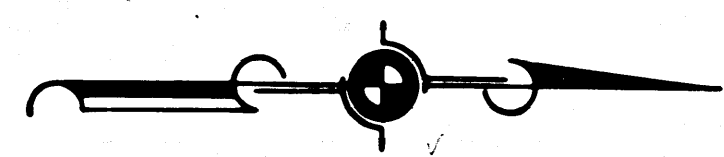
ACCESS PROHIBITED [Hatched Pattern]

DR'N BY M.A.C.	R/W MAP NO. F-1854
C'LC BY M.M.	REF. MAP NO. 110-20
C'K'D BY S.L.T.	REL-619
REVISED	

DIST	COUNTY	ROUTE	POST MILES	SHEET NO.	TOTAL SHEETS
07	L. A.	10	21.7/24.8	15	16

Richard
DEPUTY DISTRICT ENGINEER
DATE Apr. 4, 1968

FILED WITH LOS ANGELES
COUNTY RECORDER, RAY E. LEE
APR 8 1968



INTERSTATE
STATE OF CALIFORNIA
TRANSPORTATION AGENCY
DEPARTMENT OF PUBLIC WORKS
DIVISION OF HIGHWAYS

PROPOSED RELINQUISHMENT

0 50 100 150 200

AREA TO BE RELINQUISHED SHOWN THUS

ACCESS PROHIBITED

RELINQUISHED ACCESS RIGHTS

DR'N BY	M. A. C.	R/W MAP NO.	F-1854
C'LC BY	M. M.	REF. MAP NO.	110-20
C'K'D BY	S. L. T.	REL-	619
REVISED			

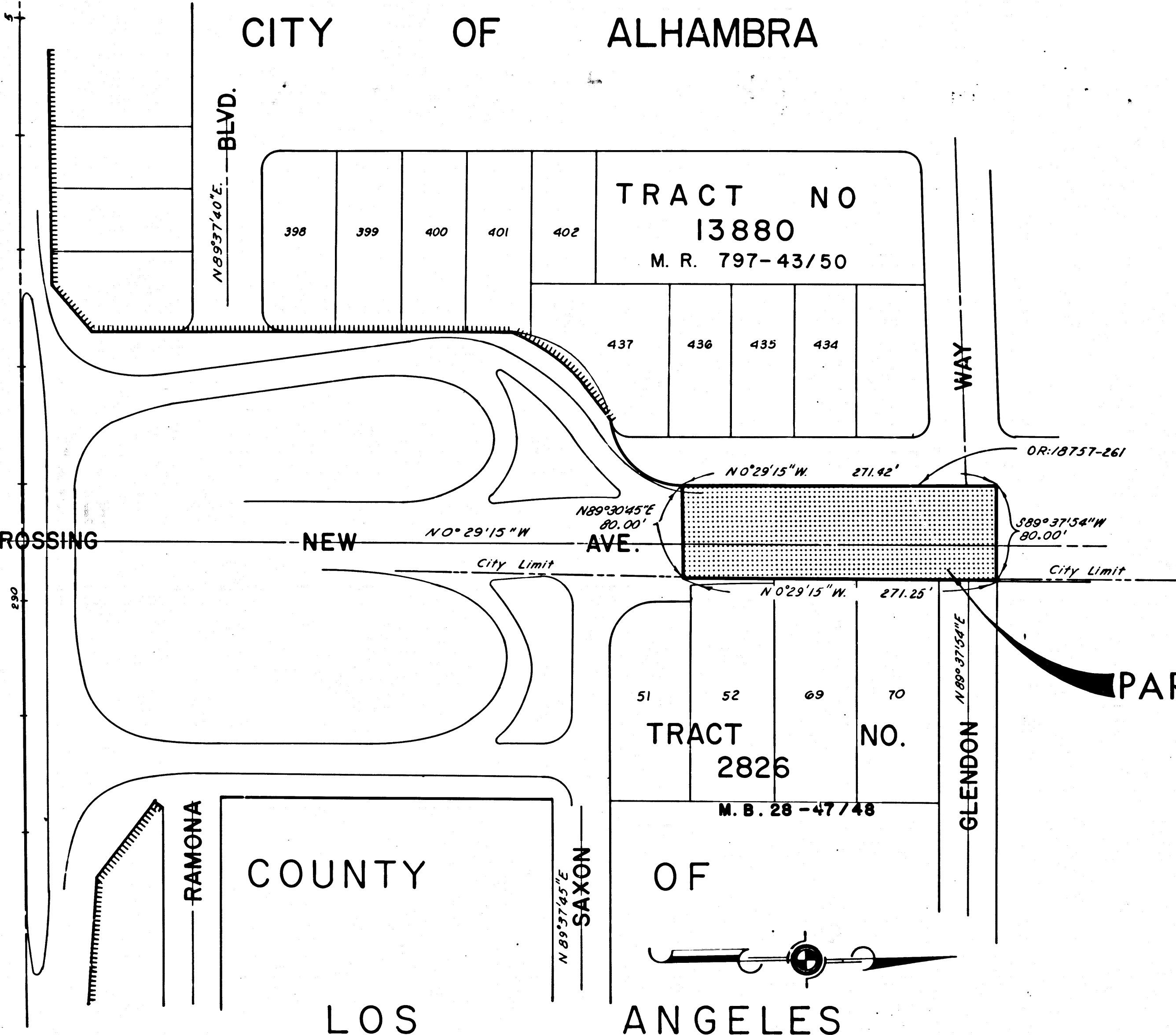
DIST	COUNTY	ROUTE	POST MILES	SHEET NO.	TOTAL SHEETS
07	L.A.	10	21.7/24.8	16	16

[Signature]
 DEPUTY DISTRICT ENGINEER
 Apr. 4, 1968
 DATE

FILED WITH LOS ANGELES
 COUNTY RECORDER, RAY E. LEE
 APR 8 1968

CITY OF ALHAMBRA

SAN BERNARDINO
 F.W.Y.
 R.I.E.
 10



PARCEL 15

COUNTY OF LOS ANGELES

INTERSTATE
 STATE OF CALIFORNIA
 TRANSPORTATION AGENCY
 DEPARTMENT OF PUBLIC WORKS
 DIVISION OF HIGHWAYS

PROPOSED RELINQUISHMENT

0 50 100 150 200

AREA TO BE RELINQUISHED SHOWN THUS [Dotted Pattern]

ACCESS PROHIBITED [Hatched Pattern]

DR'N BY M.A.C.	R/W MAP NO. F1855
C'LC BY M.M.	REF. MAP NO. 110-20
C'K'D BY S.L.T.	REL-619
REVISED	