

DIST	COUNTY	ROUTE	POST MILES	SHEET NO.	TOTAL SHEETS
07	C.A.	10	31.3	1	2

STATE OF CALIFORNIA
 TRANSPORTATION AGENCY
 DEPARTMENT OF PUBLIC WORKS
 DIVISION OF HIGHWAYS

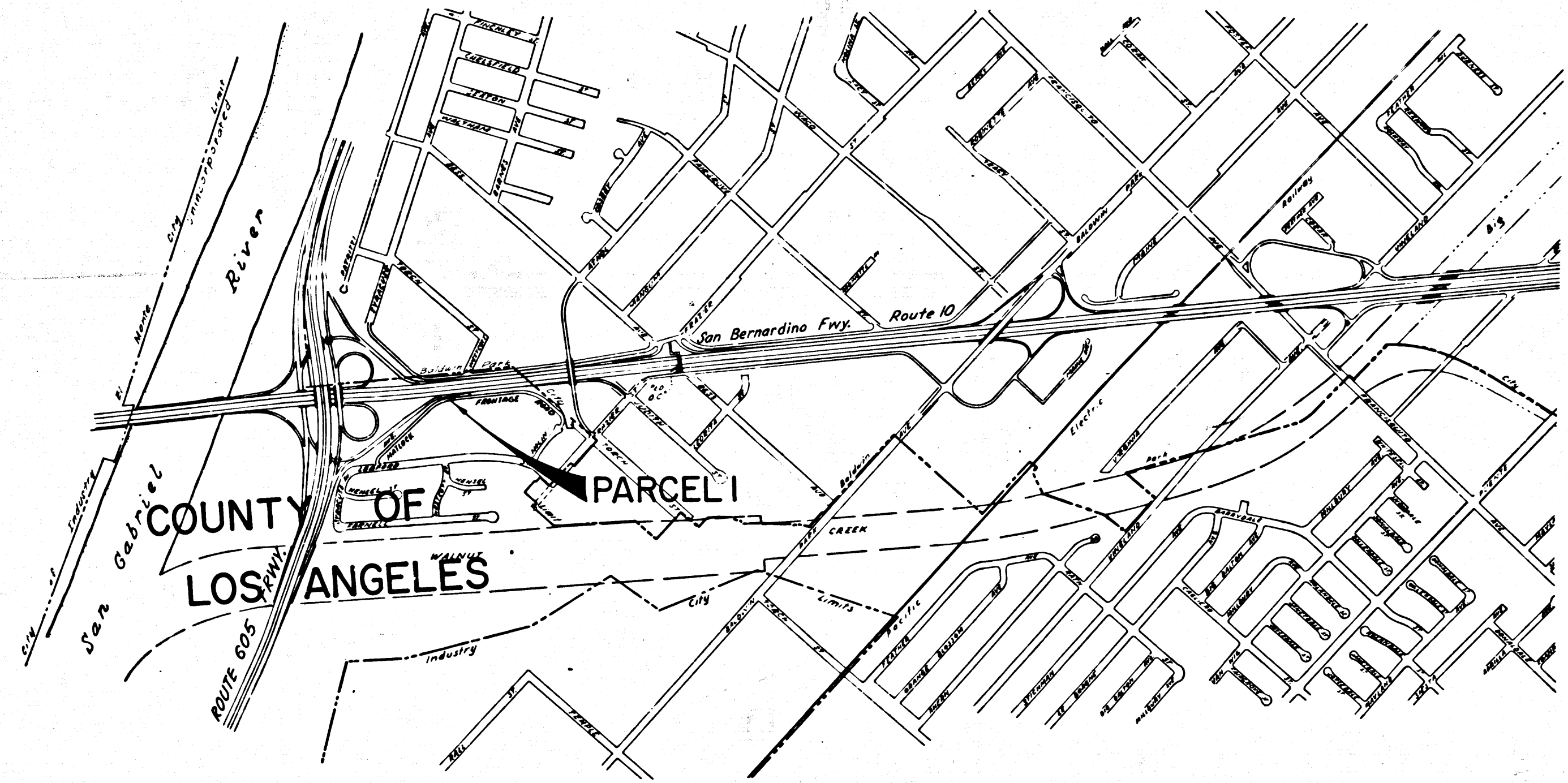
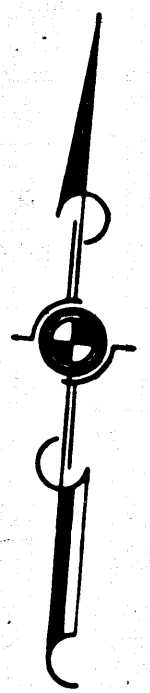
Anthony
 DEPUTY DISTRICT ENGINEER
 Apr. 25, 1968
 DATE

RIGHT OF WAY MAPS OF
STATE HIGHWAY

3873

On the San Bernardino Fwy. 0.1 mile
 East of the San Gabriel River Fwy. (Rte. 605)

FILED
 AT REQUEST OF
 DEPT. OF PUBLIC WORKS
 MAY 1, 1968
 4:11 PM
 IN BOOK 6
 AT PAGE 92
 OF STATE HIGHWAY MAPS
 LOS ANGELES COUNTY, CALIF.
 COUNTY RECORDER
 BY *Fee*
 Deputy



INTERSTATE
 STATE OF CALIFORNIA
 TRANSPORTATION AGENCY
 DEPARTMENT OF PUBLIC WORKS
 DIVISION OF HIGHWAYS
PROPOSED RELINQUISHMENT

SCALE
 0 600 1200 1800 2400

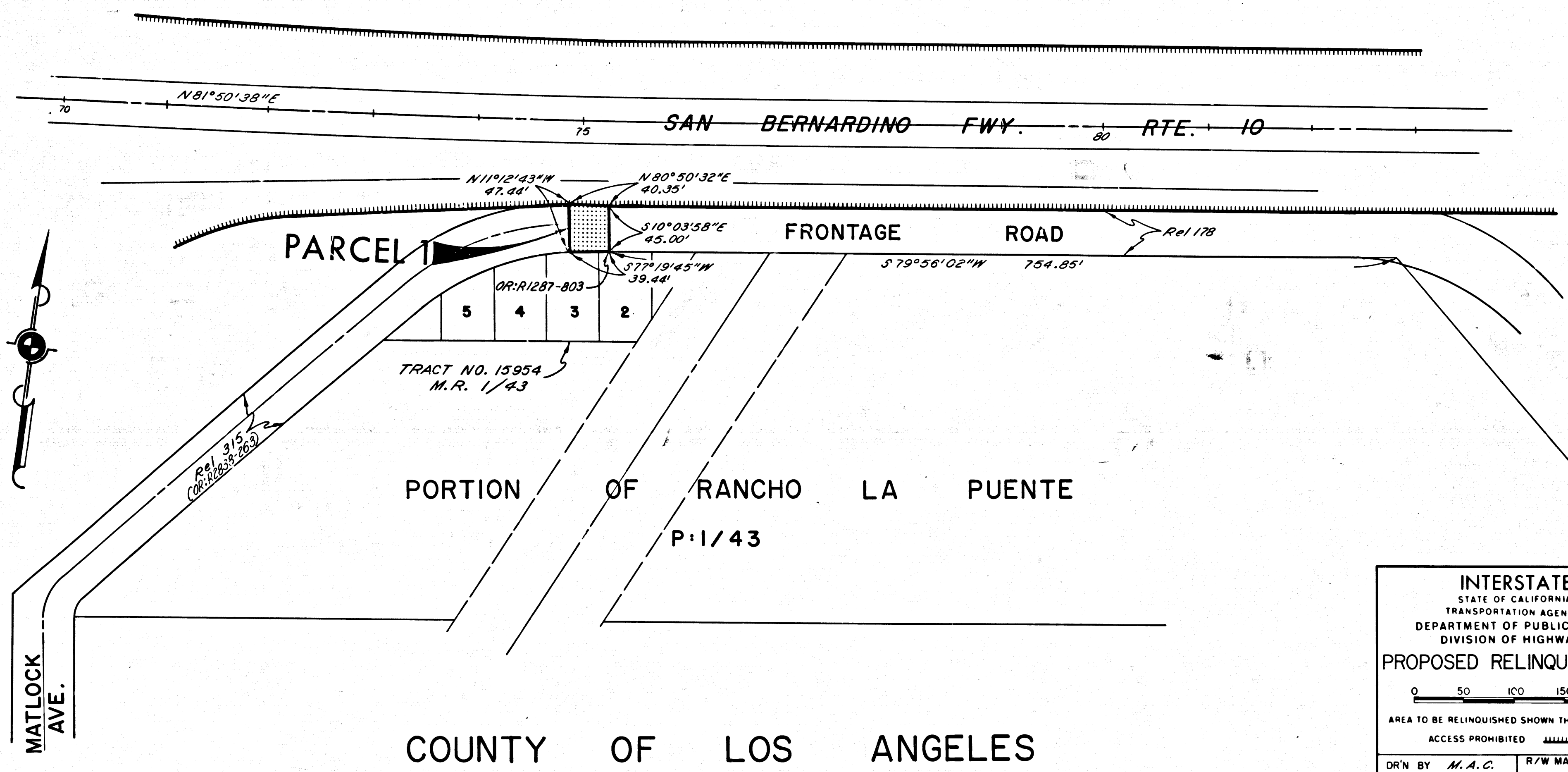
DR'N BY	M.A.C.	R/W MAP NO.	F-1860
C'LC BY	S.L.T.	REF. MAP NO.	
C'K'D BY	M.M.	REL-	659
REVISED			

6/1/68
 1:41
 1/23

DIST	COUNTY	ROUTE	POST MILES	SHEET NO.	TOTAL SHEETS
07	C.A.	10	31.3	2	2

Anthony
 DEPUTY DISTRICT ENGINEER
 Apr. 25, 1968
 DATE

FILED WITH LOS ANGELES
 COUNTY RECORDER, RAY E. LEE
 MAY 1 1968



INTERSTATE
 STATE OF CALIFORNIA
 TRANSPORTATION AGENCY
 DEPARTMENT OF PUBLIC WORKS
 DIVISION OF HIGHWAYS

PROPOSED RELINQUISHMENT

0 50 100 150 200

AREA TO BE RELINQUISHED SHOWN THUS [Stippled Box]

ACCESS PROHIBITED [Hatched Box]

DR'N BY M. A. C.	R/W MAP NO. F-1880
C'LG BY S. L. T.	REF. MAP NO.
C'K'D BY M. M.	REL- 659
REVISED	

COUNTY OF LOS ANGELES