

DIST	COUNTY	ROUTE	POST MILES	SHEET NO.	TOTAL SHEETS
07	L.A.	605	4.5/4.9	1	3

STATE OF CALIFORNIA
 TRANSPORTATION AGENCY
 DEPARTMENT OF PUBLIC WORKS
 DIVISION OF HIGHWAYS

Anthony
 DEPUTY DISTRICT ENGINEER
 May 2, 1968
 DATE

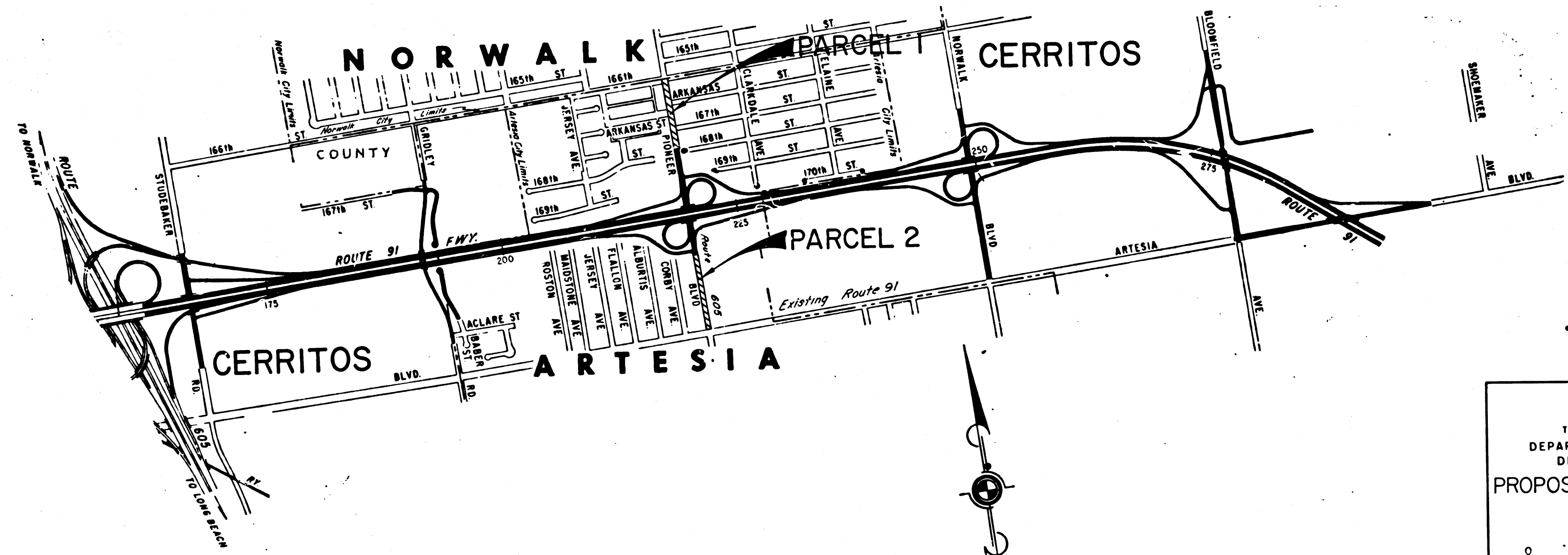
RIGHT OF WAY MAPS OF
STATE HIGHWAY

3060

FILED
 AT REQUEST OF
 DEPT. OF PUBLIC WORKS
 MAY 6, 1968
 53 MIN. 12 P.M.

IN BOOK 6
 AT PAGE 94
 OF STATE HIGHWAY MAPS
 FOR LOS ANGELES COUNTY, CALIF.
 RAY E. LEE
 COUNTY RECORDER
Free

In the County of Los Angeles on Pioneer Blvd.
 between Artesia Blvd. and I66th. St.



STATE OF CALIFORNIA
 TRANSPORTATION AGENCY
 DEPARTMENT OF PUBLIC WORKS
 DIVISION OF HIGHWAYS

PROPOSED RELINQUISHMENT

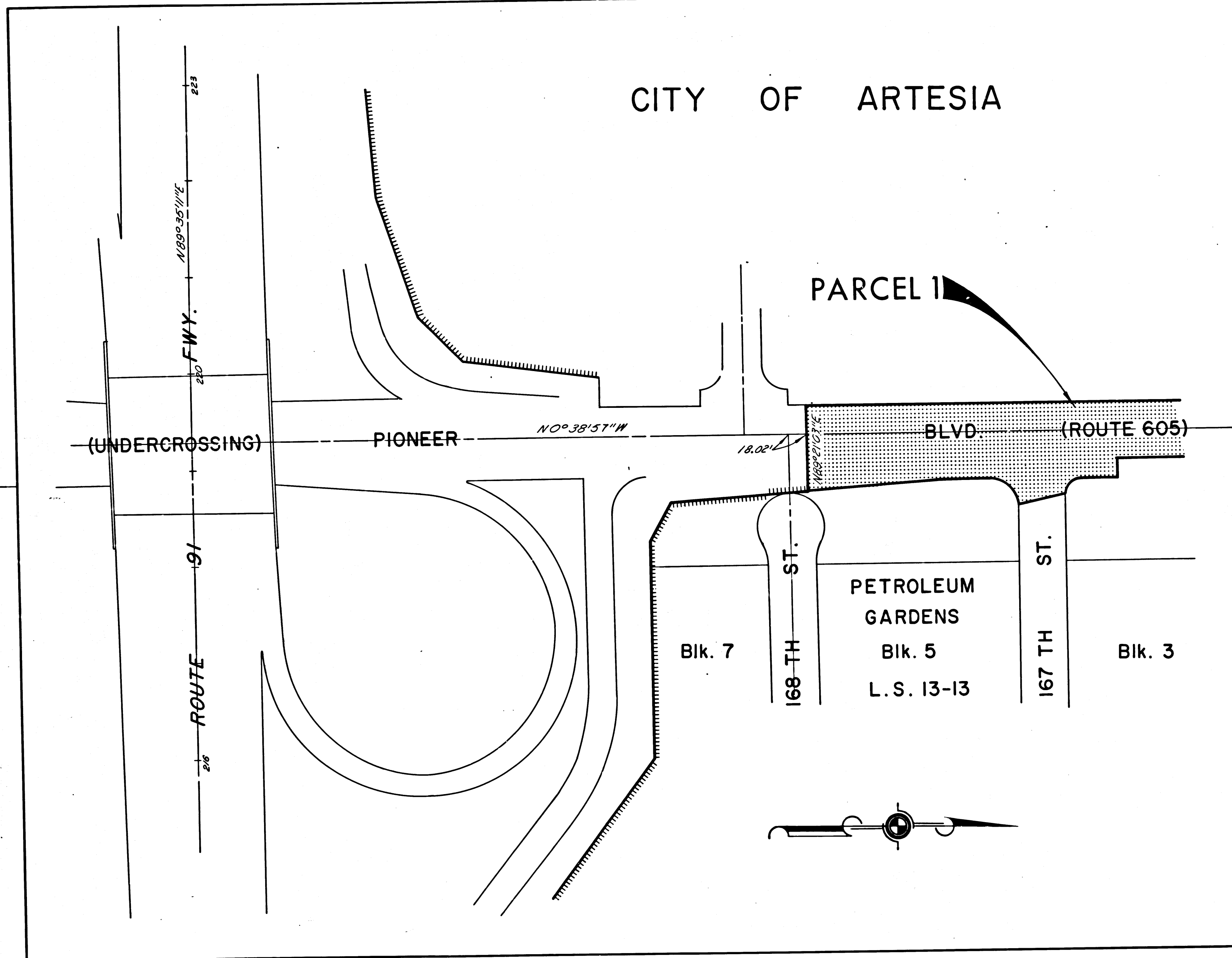
SCALE
 0 600 1200 1800 2400

DR'N BY	M.A.C.	R/W MAP NO.	F-1096
C'LC BY	G.D.W.	REF MAP NO.	177-1
C'K'D BY	S.L.T.	REL-	654
REVISED			

DIST	COUNTY	ROUTE	POST MILES	SHEET NO.	TOTAL SHEETS
07	L.A.	605	4.5/4.9	2	3

G.W. Hoy
DEPUTY DISTRICT ENGINEER
May 2, 1968
DATE

CITY OF ARTESIA



STATE OF CALIFORNIA
TRANSPORTATION AGENCY
DEPARTMENT OF PUBLIC WORKS
DIVISION OF HIGHWAYS

PROPOSED RELINQUISHMENT

0 50 100 150 200

AREA TO BE RELINQUISHED SHOWN THUS ACCESS PROHIBITED

DR'N BY <i>M.A.C.</i>	R/W MAP NO. <i>F-1096</i>
C'LC BY <i>G.D.W.</i>	REF. MAP NO. <i>177-1</i>
C'K'D BY <i>S.L.T.</i>	REL- 654
REVISED	

FILED WITH LOS ANGELES
 COUNTY RECORDER RAY E. LEE
 MAY 8 1968

BOOK 6 PAGE 96

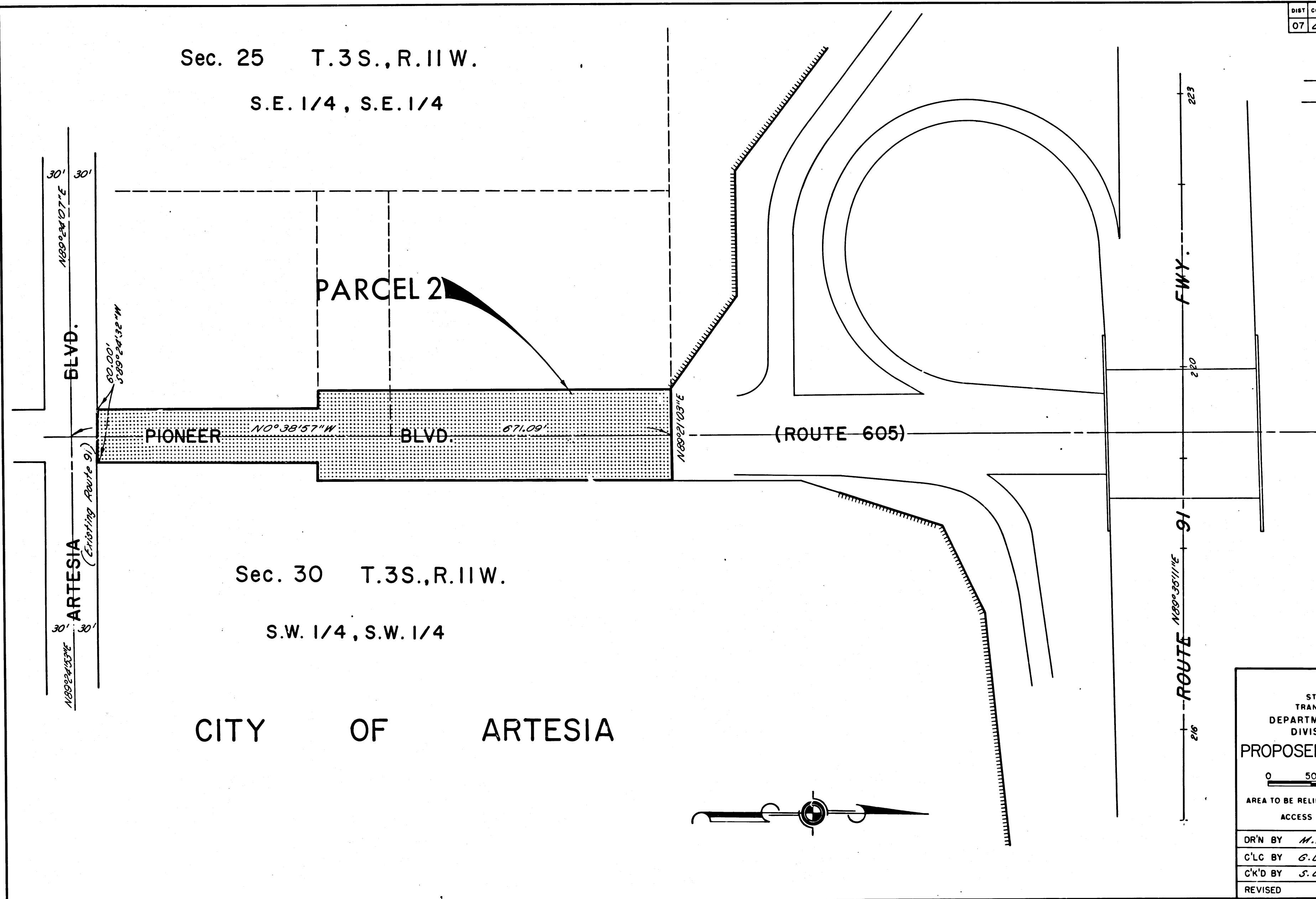
DIST	COUNTY	ROUTE	POST MILES	SHEET NO.	TOTAL SHEETS
07	L.A.	605	4.5/4.9	3	3

Anthony
 DEPUTY DISTRICT ENGINEER
 May 2, 1968
 DATE

Sec. 25 T.3S.,R.IIW.
 S.E. 1/4, S.E. 1/4

Sec. 30 T.3S.,R.IIW.
 S.W. 1/4, S.W. 1/4

CITY OF ARTESIA



STATE OF CALIFORNIA
 TRANSPORTATION AGENCY
 DEPARTMENT OF PUBLIC WORKS
 DIVISION OF HIGHWAYS

PROPOSED RELINQUISHMENT

0 50 100 150 200

AREA TO BE RELINQUISHED SHOWN THUS

ACCESS PROHIBITED

DR'N BY	M.A.C.	R/W MAP NO.	F-1006
C'LC BY	G.D.W.	REF. MAP NO.	177-1
C'K'D BY	S.L.T.	REL- 654	
REVISED			