

DIST	COUNTY	ROUTE	POST MILES	SHEET NO.	TOTAL SHEETS
07	LA	605	10.3	1	2

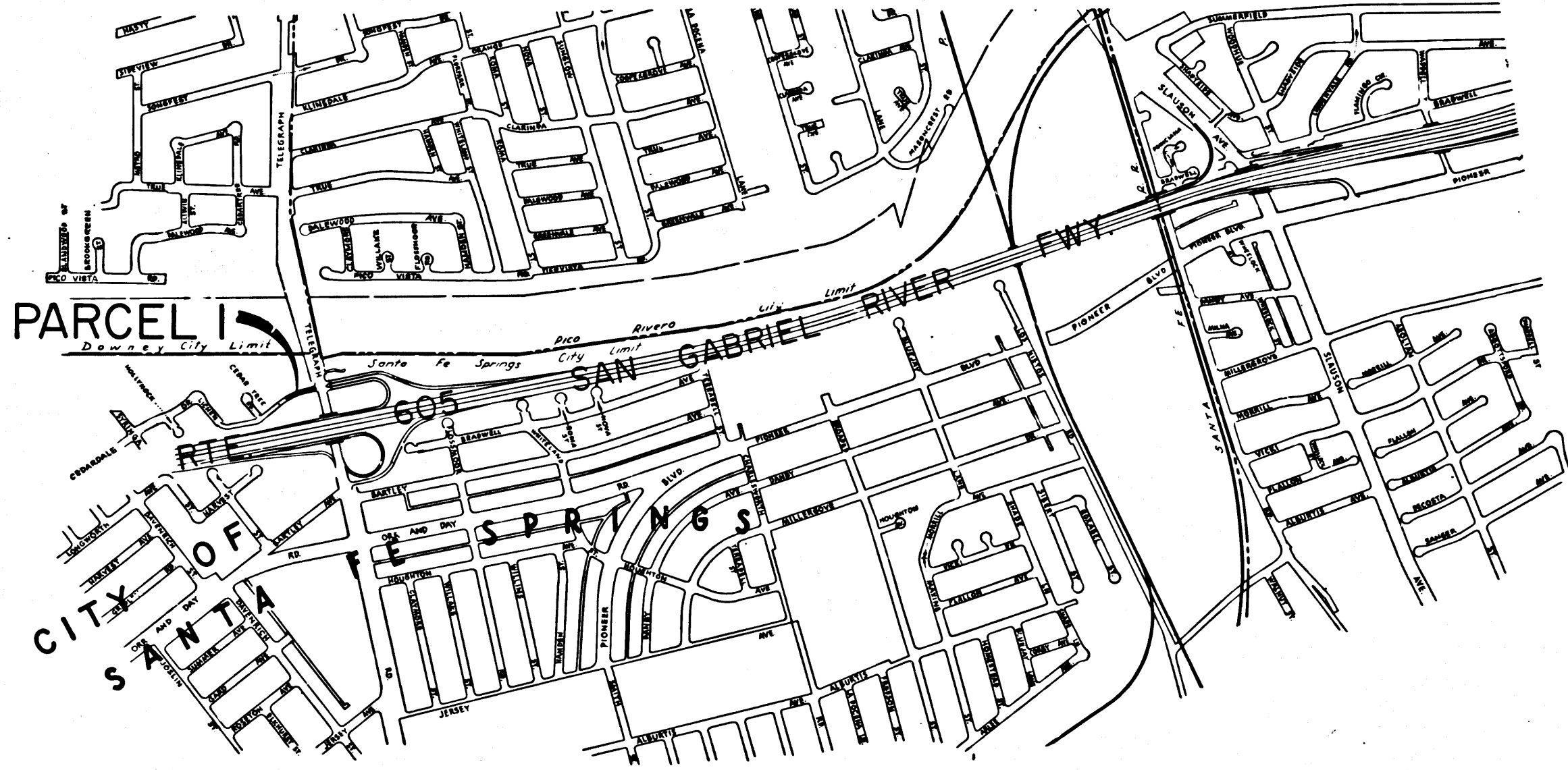
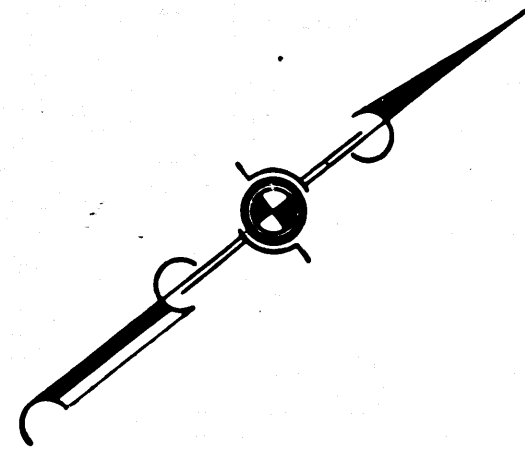
STATE OF CALIFORNIA
 TRANSPORTATION AGENCY
 DEPARTMENT OF PUBLIC WORKS
 DIVISION OF HIGHWAYS

RIGHT OF WAY MAPS OF
STATE HIGHWAY
 CEDARDALE DRIVE EXTENSION
 ADJACENT TO RTE. 605 FREEWAY

Ray E. Lee
 DEPUTY DISTRICT ENGINEER
 May 6, 1968
 DATE

3052

FILED
 AT REQUEST OF
 DEPT. OF PUBLIC WORKS
 MAY 9, 1968
 5:00 PAST 1 P.M.
 IN BOOK 6
 AT PAGE 97
 OF STATE HIGHWAY MAPS
 LOS ANGELES COUNTY, CALIF.
 RAY E. LEE
 COUNTY REGISTER
Ray E. Lee Free
 Deputy



1156
 4/17/98

INTERSTATE
 STATE OF CALIFORNIA
 TRANSPORTATION AGENCY
 DEPARTMENT OF PUBLIC WORKS
 DIVISION OF HIGHWAYS
PROPOSED RELINQUISHMENT

0 600 1200 1800 2400

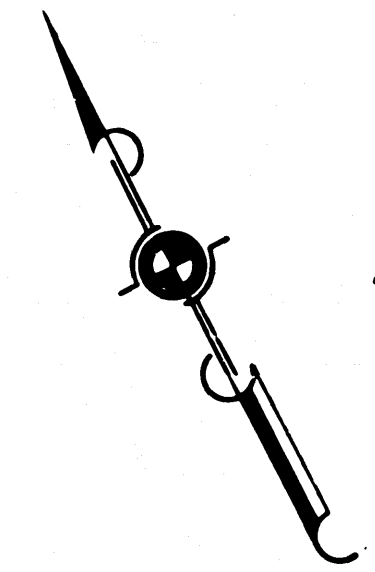
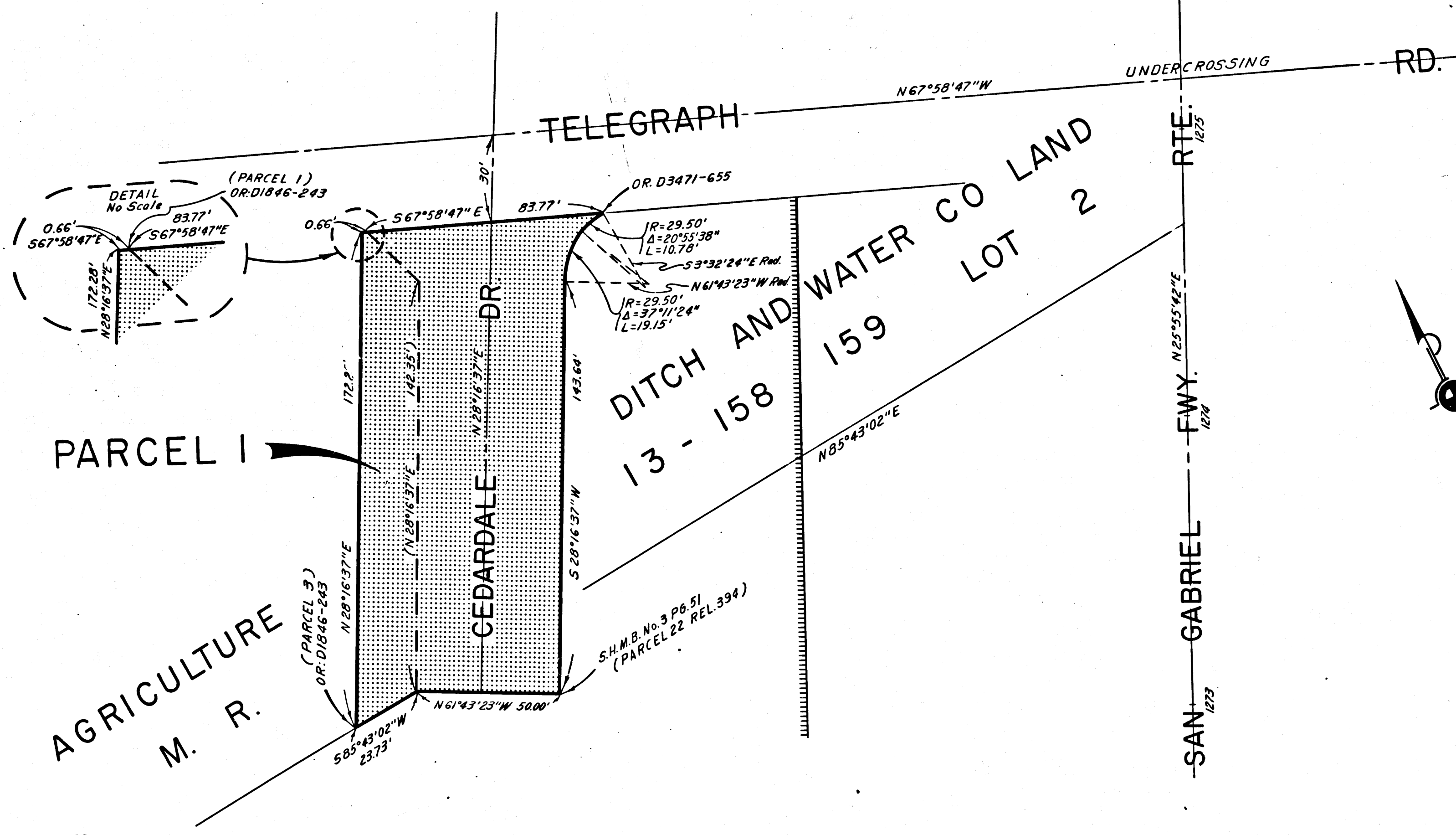
DR'N BY L.S.	R/W MAP NO. F-1962
C'LC BY M.M.	REF. MAP NO.
C'K'D BY S.L.T.	REL- 497
REVISED	

DIST	COUNTY	ROUTE	POST MILES	SHEET NO.	TOTAL SHEETS
07	LA	605	10.3	2	2

CITY OF SANTA FE SPRINGS

Ray Hoy
 DEPUTY DISTRICT ENGINEER
 May 6, 1968
 DATE

FILED WITH LOS ANGELES
 COUNTY RECORDER, RAY E. LEE
 MAY 9 1968



INTERSTATE
 STATE OF CALIFORNIA
 TRANSPORTATION AGENCY
 DEPARTMENT OF PUBLIC WORKS
 DIVISION OF HIGHWAYS

PROPOSED RELINQUISHMENT

0 20 40 60 80

AREA TO BE RELINQUISHED SHOWN THUS [Dotted Pattern]

ACCESS PROHIBITED [Hatched Pattern]

DR'N BY L.S.	R/W MAP NO. F-1962
C'LC BY M.M.	REF. MAP NO.
C'k'D BY S.L.T.	REL- 497
REVISED	

BOOK 6 PAGE 99

DIST.	COUNTY	ROUTE	POST MILES	SHEET NO.	TOTAL SHEETS
07	L.A.	10	3.9	1	2

STATE OF CALIFORNIA
 TRANSPORTATION AGENCY
 DEPARTMENT OF PUBLIC WORKS
 DIVISION OF HIGHWAYS

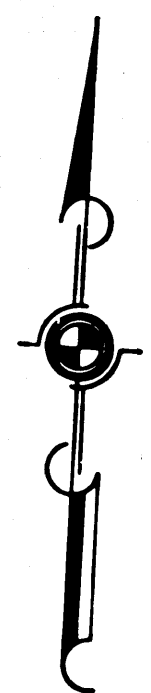
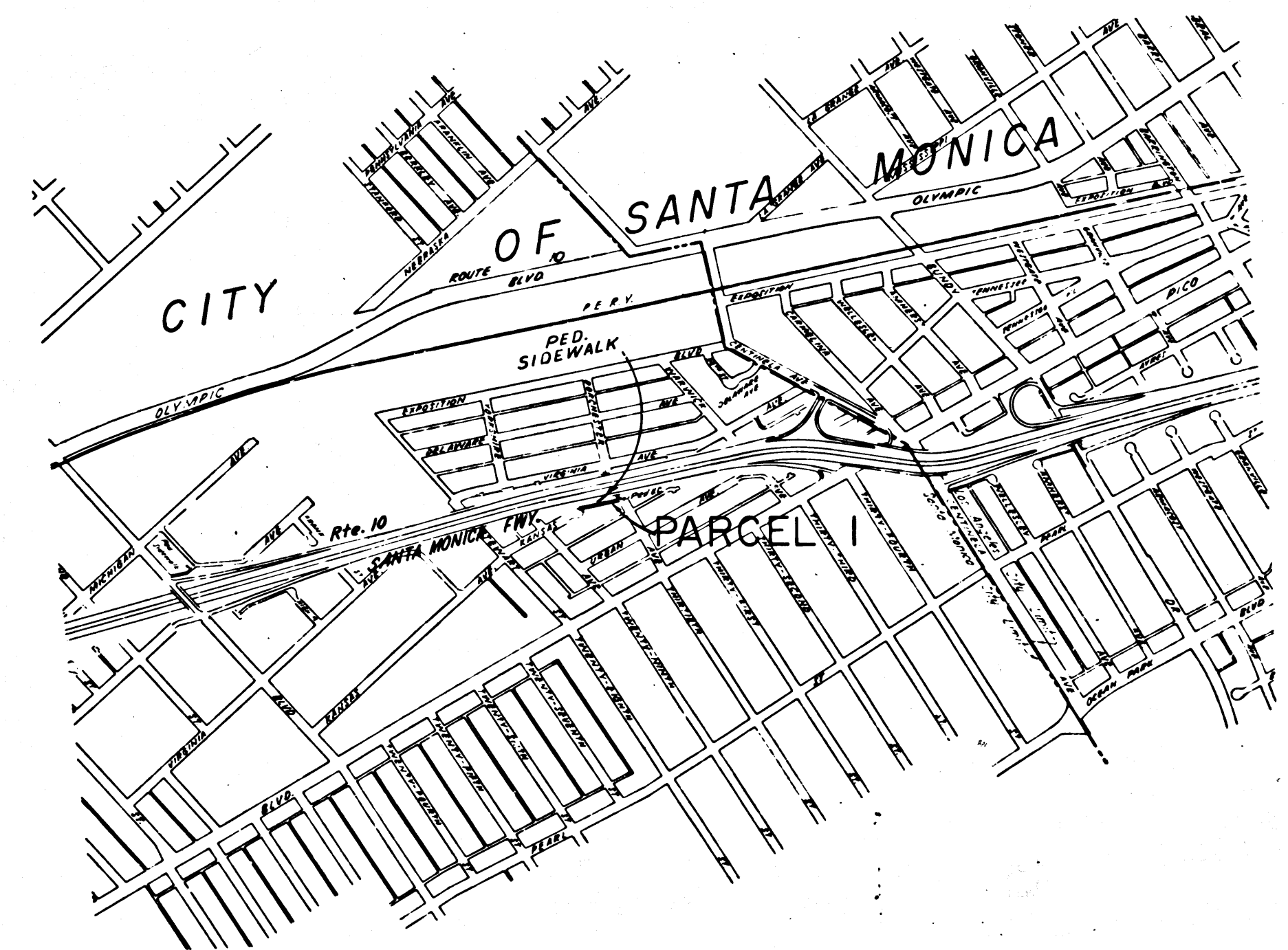
Anthony
 DEPUTY DISTRICT ENGINEER
 May 9, 1968
 DATE

RIGHT OF WAY MAPS OF
STATE HIGHWAY

2188

In The City of Santa Monica
 Between Yorkshire Ave. and Dorchester Ave.

FILED
 AT REQUEST OF
 DEPT. OF PUBLIC WORKS
 MAY 13, 1968
 3:00 P.M.
 IN BOOK 6
 AT PAGE 99
 OF STATE HIGHWAY MAPS
 FOR THE COUNTY OF CALIF.
 COUNTY RECORDER
F.P.P.



INTERSTATE
 STATE OF CALIFORNIA
 TRANSPORTATION AGENCY
 DEPARTMENT OF PUBLIC WORKS
 DIVISION OF HIGHWAYS
PROPOSED RELINQUISHMENT

SCALE
 0 600 1200 1800 2400

DR'N BY <i>M.A.C.</i>	R/W MAP NO. <i>F-2085</i>
C'LC BY <i>G.D.W.</i>	REF. MAP NO.
C'k'D BY <i>S.L.T.</i>	REL- 592
REVISED	

G.P.W.

1/30