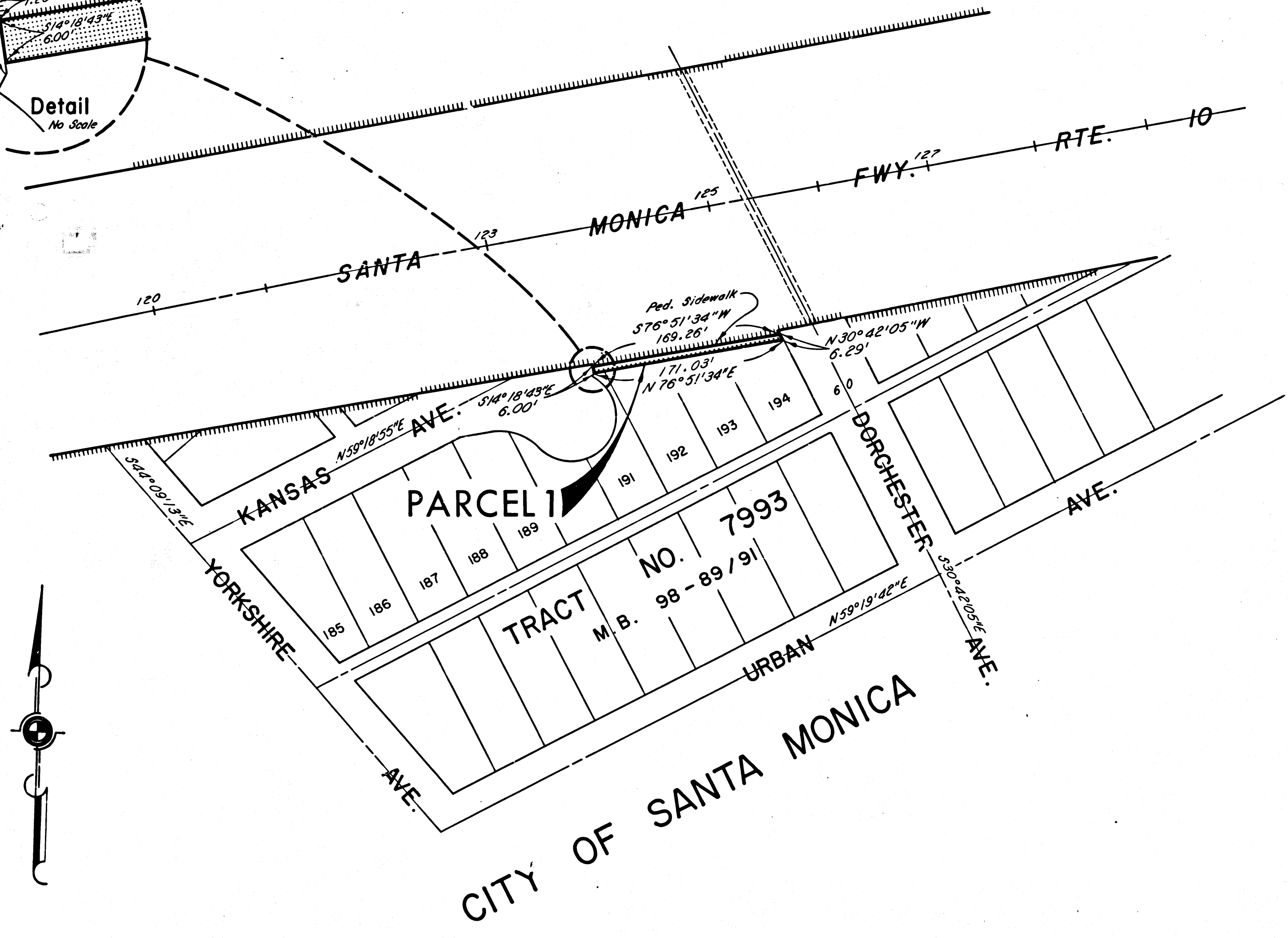
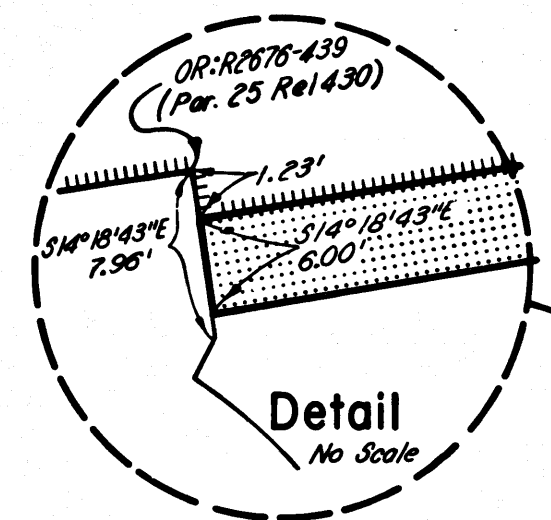


FILED WITH LOS ANGELES  
COUNTY RECORDER, RAY E. LEE  
MAY 18 1968

DIST	COUNTY	ROUTE	POST MILES	SHEET NO.	TOTAL SHEETS
07	L.A.	10	3.9	2	2

*Anthony*  
DEPUTY DISTRICT ENGINEER  
May 9, 1968  
DATE



INTERSTATE  
STATE OF CALIFORNIA  
TRANSPORTATION AGENCY  
DEPARTMENT OF PUBLIC WORKS  
DIVISION OF HIGHWAYS

PROPOSED RELINQUISHMENT

0 50 100 150 200

AREA TO BE RELINQUISHED SHOWN THUS

ACCESS PROHIBITED

DR'N BY	M.A.C.	R/W MAP NO.	F-2065
C'LC BY	G.D.W.	REF. MAP NO.	
C'K'D BY	B.L.T.	REL-	592
REVISED			