

DIST	COUNTY	ROUTE	POST MILES	SHEET NO.	TOTAL SHEETS
07	L.A.	101	28.1/29.9	1	5

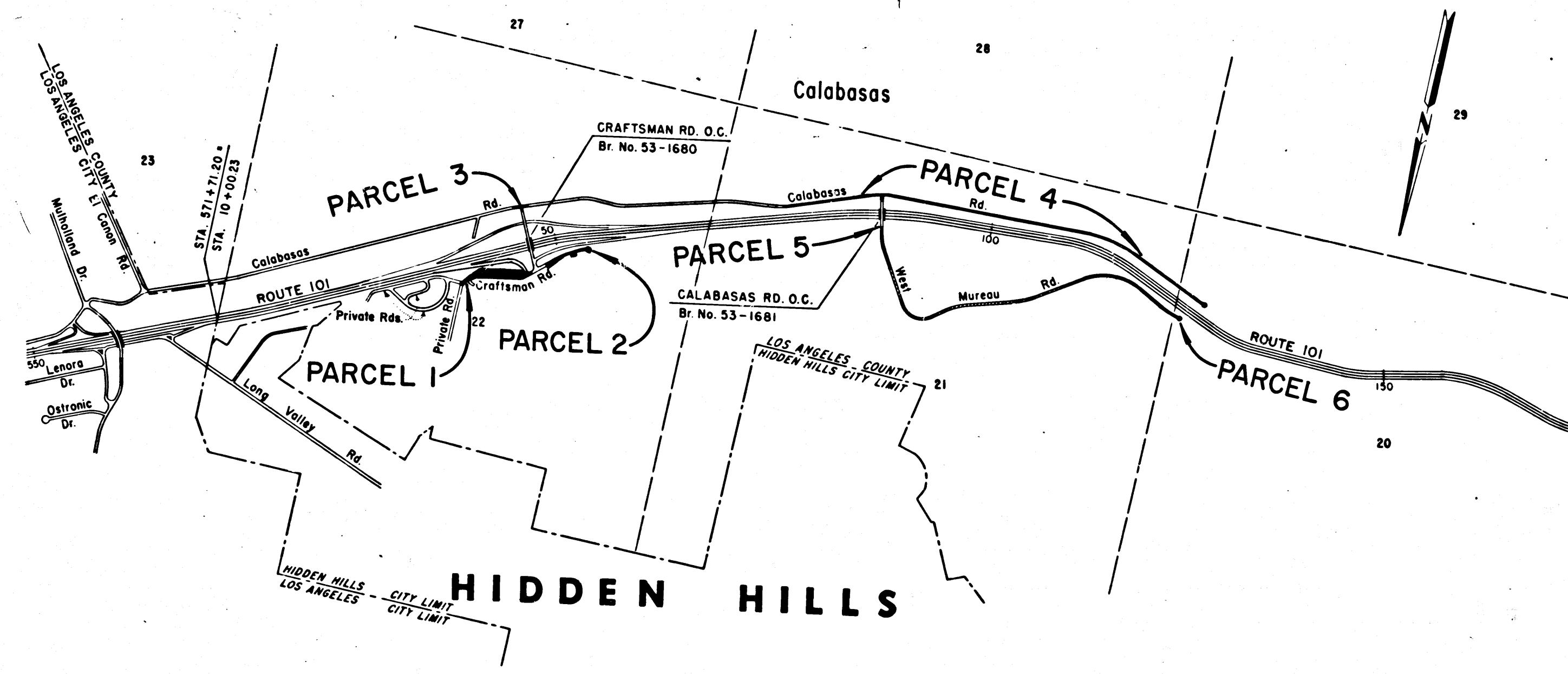
STATE OF CALIFORNIA  
 TRANSPORTATION AGENCY  
 DEPARTMENT OF PUBLIC WORKS  
 DIVISION OF HIGHWAYS

*Anthony*  
 DEPUTY DISTRICT ENGINEER  
 DATE *May 9, 1968*

RIGHT OF WAY MAPS OF  
**STATE HIGHWAY**

In the County of Los Angeles  
 Between 0.2mi.E. Craftsman Rd. O.C.  
 and 0.8mi.W. of Calabasas Rd. O.C.

2189  
 FILED  
 AT REQUEST OF  
 DEPT. OF PUBLIC WORKS  
*MAY 13, 1968*  
 30 PAST 1 PM  
 BY BOOK 7  
 AT PAGE 1  
 OF STATE HIGHWAY MAPS  
 LOS ANGELES COUNTY, CALIF.  
 RATE KEPT  
 COUNTY RECORDER  
*Free*  
 BY *[Signature]*  
 Deputy



STATE OF CALIFORNIA  
 TRANSPORTATION AGENCY  
 DEPARTMENT OF PUBLIC WORKS  
 DIVISION OF HIGHWAYS  
**PROPOSED RELINQUISHMENT**

SCALE IN FEET  
 0 1000 2000 3000

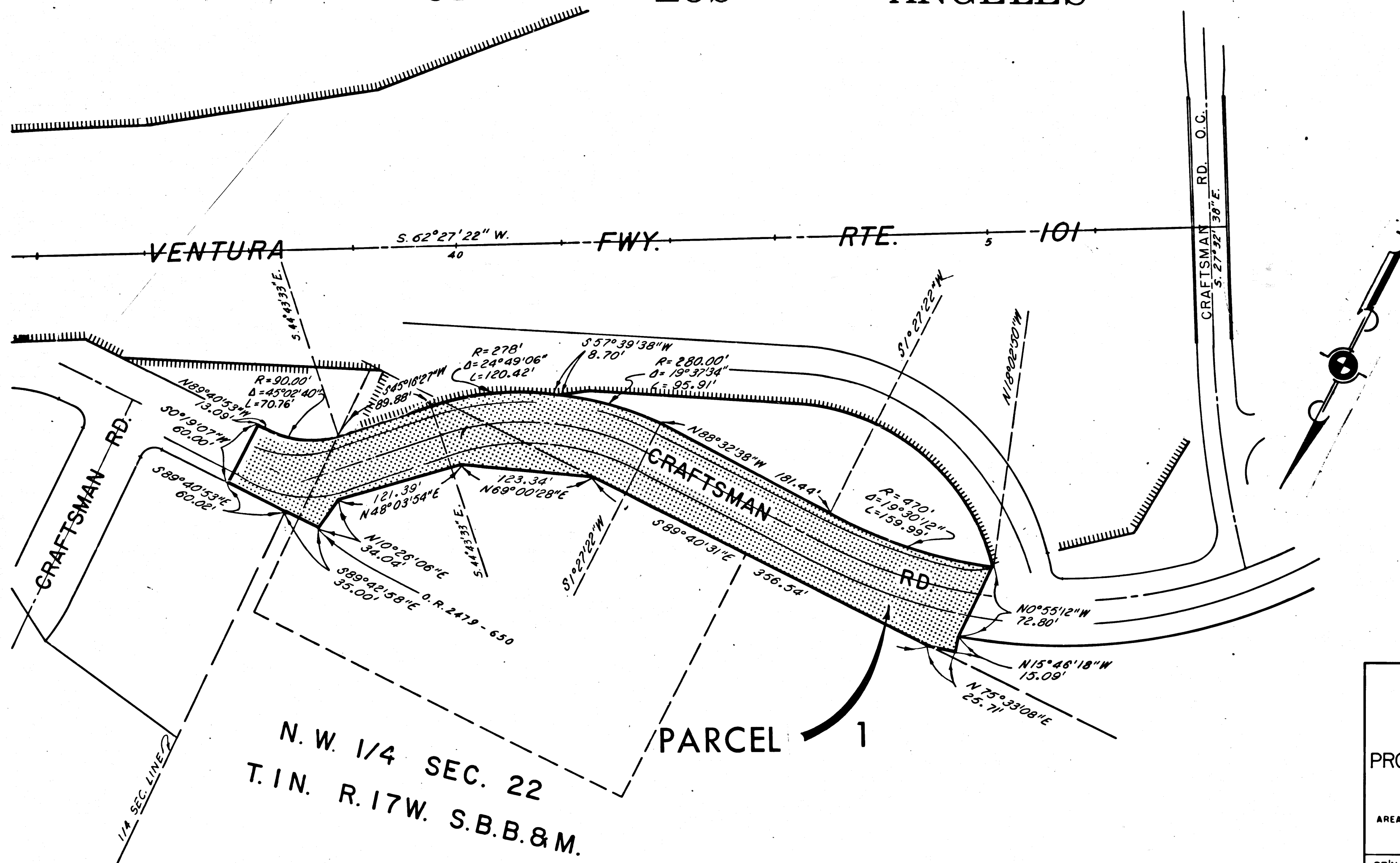
DR'N BY <i>C.S.</i>	R/W MAP NO. <i>F-2214</i>
C'LC BY <i>J.F.F.</i>	<i>F-2215 F-2216</i>
CK'D BY <i>S.C.T.</i>	REF MAP NO. <i>103-7</i>
REVISED	<b>REL-600</b>

FILED WITH LOS ANGELES  
COUNTY RECORDER, RAY E. LEE  
MAY 13 1968

DIST	COUNTY	ROUTE	POST MILES	SHEET NO.	TOTAL SHEETS
07	L.A.	101	28.1/29.9	2	8

*Anthony*  
DEPUTY DISTRICT ENGINEER  
May 9, 1968  
DATE

COUNTY OF LOS ANGELES



N. W. 1/4 SEC. 22  
T. 1 N. R. 17 W. S. B. B. & M.

STATE OF CALIFORNIA  
TRANSPORTATION AGENCY  
DEPARTMENT OF PUBLIC WORKS  
DIVISION OF HIGHWAYS

**PROPOSED RELINQUISHMENT**

0 50 100 150 200

AREA TO BE RELINQUISHED SHOWN THUS

ACCESS PROHIBITED

DR'N BY <i>L.S.</i>	R/W MAP NO. <i>F-2214</i>
C'LC BY <i>J.F.F.</i>	REF MAP NO. <i>163-7</i>
C'K'D BY <i>S.L.T.</i>	REL- 600
REVISED <i>4-29-68</i>	

COUNTY

OF

LOS ANGELES

FILED WITH LOS ANGELES  
COUNTY RECORDER, RAY E. LEE  
MAY 18 1968

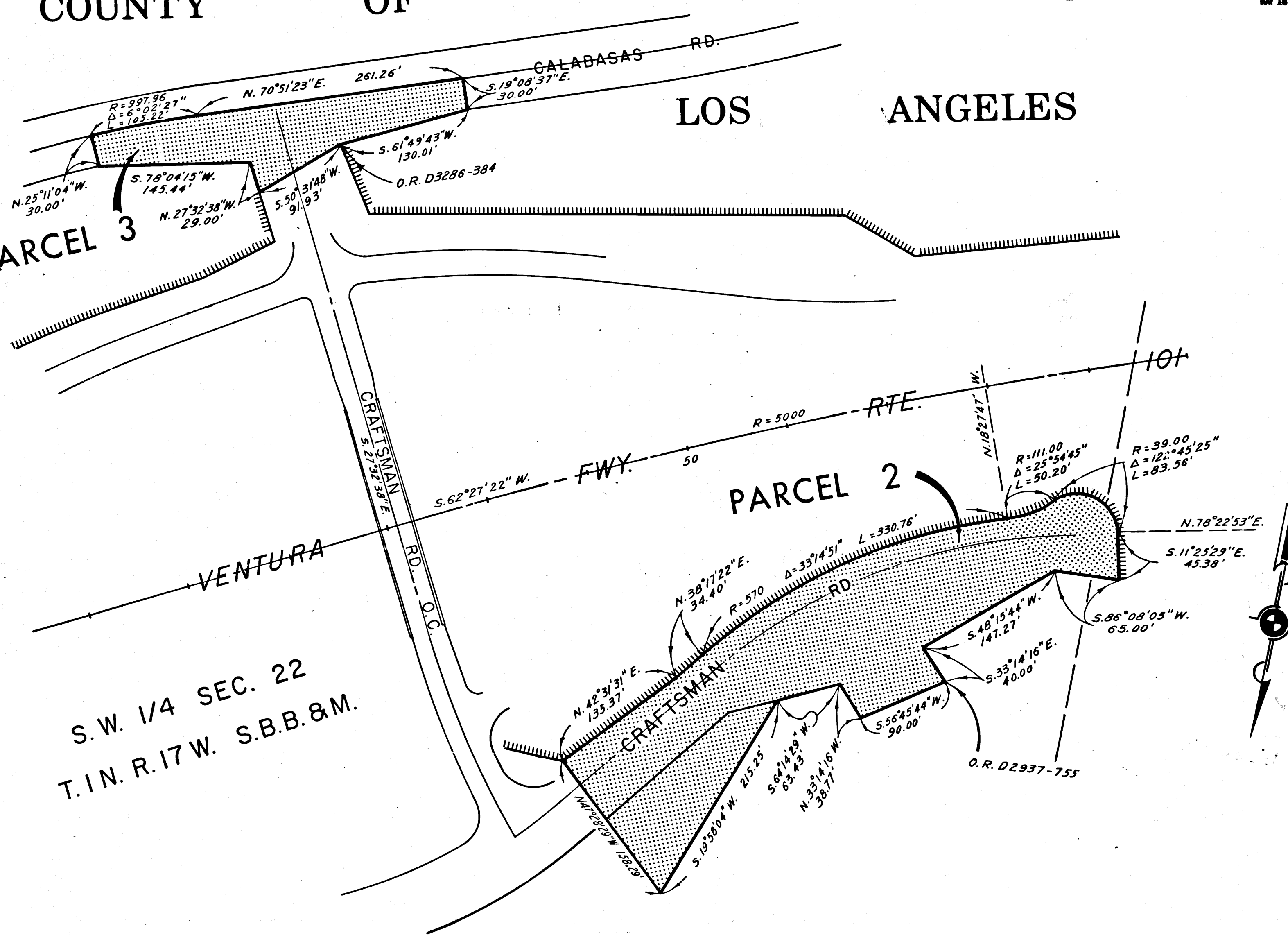
DIST	COUNTY	ROUTE	POST MILES	SHEET NO.	TOTAL SHEETS
07	L.A.	101	28.1/29.9	3	8

*aw Hoy*  
DEPUTY DISTRICT ENGINEER  
May 9, 1968  
DATE

PARCEL 3

PARCEL 2

S.W. 1/4 SEC. 22  
T.1N. R.17W. S.B.B. & M.



STATE OF CALIFORNIA  
TRANSPORTATION AGENCY  
DEPARTMENT OF PUBLIC WORKS  
DIVISION OF HIGHWAYS

**PROPOSED RELINQUISHMENT**

0 50 100 150 200

AREA TO BE RELINQUISHED SHOWN THUS

ACCESS PROHIBITED

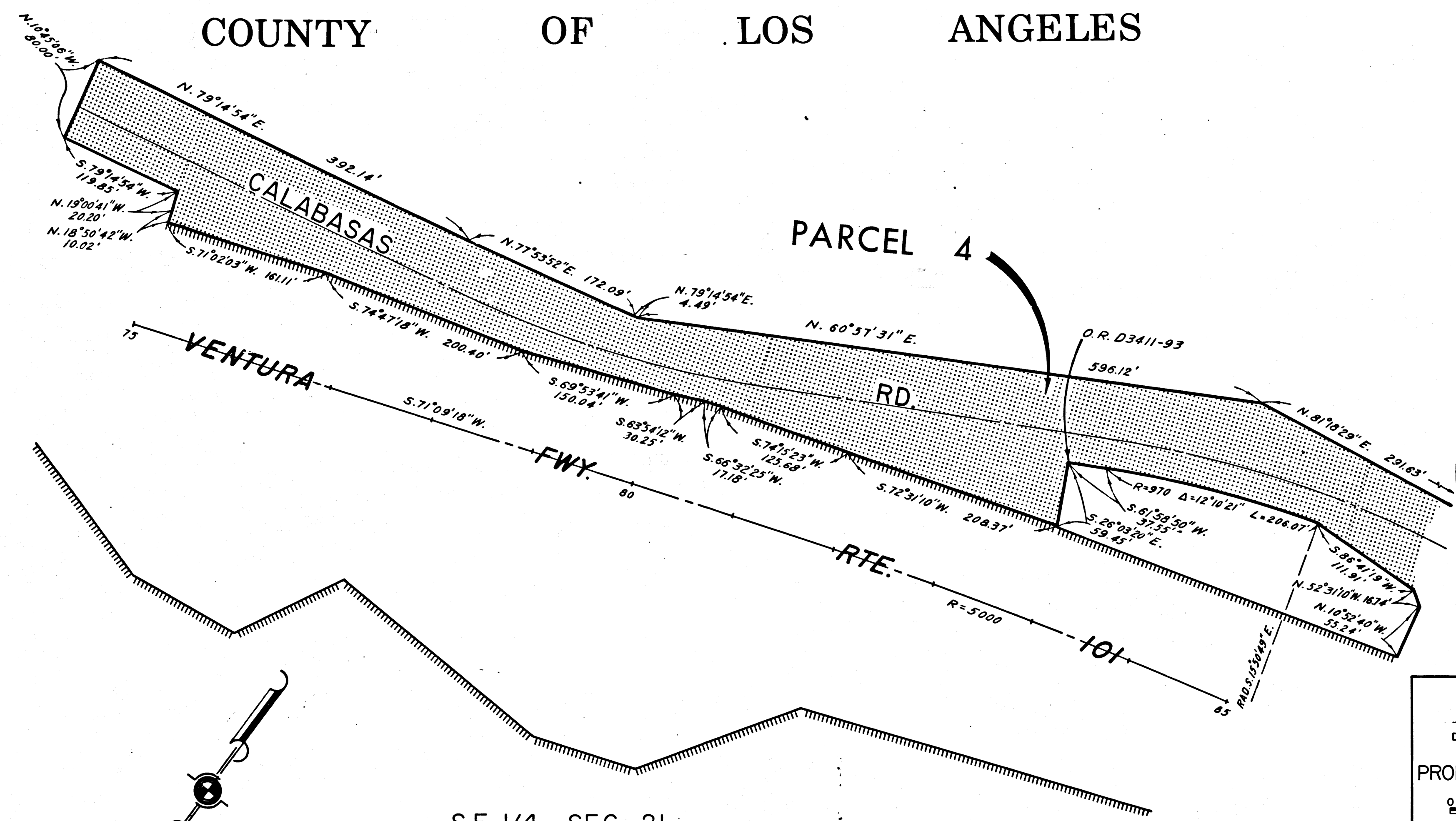
DR'N BY <i>L.S.</i>	R/W MAP NO. <i>F-2214</i>
C'LG BY <i>J.F.F.</i>	REF. MAP NO. <i>163-7</i>
C'K'D BY <i>S.L.T.</i>	<b>REL- 600</b>
REVISED	

FILED WITH LOS ANGELES  
COUNTY RECORDER, RAY E. LEE  
MAY 18 1968

DIST	COUNTY	ROUTE	POST MILE	SHEET NO.	TOTAL SHEETS
07	L.A.	101	28.1/29.9	4	8

*C. W. H. H.*  
DEPUTY DISTRICT ENGINEER  
May 9, 1968  
DATE

COUNTY OF LOS ANGELES



S.E. 1/4 SEC. 21  
T.1N. R.17W. S.B.B.&M.

STATE OF CALIFORNIA  
TRANSPORTATION AGENCY  
DEPARTMENT OF PUBLIC WORKS  
DIVISION OF HIGHWAYS

**PROPOSED RELINQUISHMENT**

0 50 100 150 200

AREA TO BE RELINQUISHED SHOWN THUS

ACCESS PROHIBITED

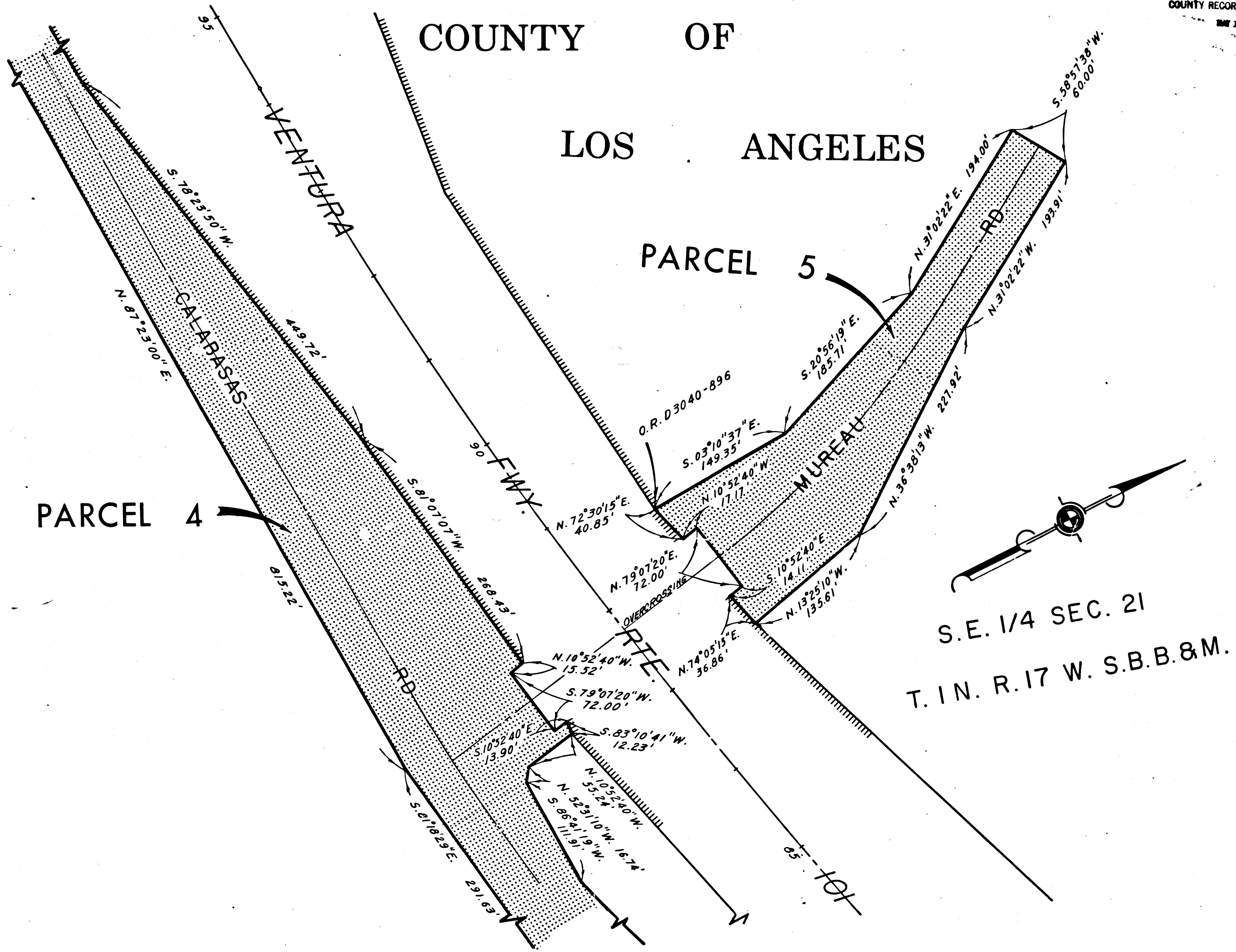
DR'N BY <i>L.S.</i>	R/W MAP NO. <i>F-2214</i>
C'LC BY <i>J.F.F.</i>	REF MAP NO. <i>163-7</i>
C'K'D BY <i>S.L.T.</i>	<b>REL- 600</b>
REVISED	

FILED WITH LOS ANGELES  
COUNTY RECORDER, RAY E. LEE

DIST	COUNTY	ROUTE	POST MILES	SHEET NO.	TOTAL SHEETS
07	L.A.	101	28.1/29.9	5	8

*Anthony*  
DEPUTY DISTRICT ENGINEER  
May 9, 1968  
DATE

COUNTY OF  
LOS ANGELES



S.E. 1/4 SEC. 21  
T. 1 N. R. 17 W. S.B.B.&M.

STATE OF CALIFORNIA  
TRANSPORTATION AGENCY  
DEPARTMENT OF PUBLIC WORKS  
DIVISION OF HIGHWAYS

**PROPOSED RELINQUISHMENT**

0 50 100 150 200

AREA TO BE RELINQUISHED SHOWN THUS

ACCESS PROHIBITED

DR'N BY L.S.	R/W MAP NO. F-2218
C'LC BY J.F.F.	REF. MAP NO. 163-7
C'K'D BY S.L.T.	<b>REL-600</b>
REVISED	

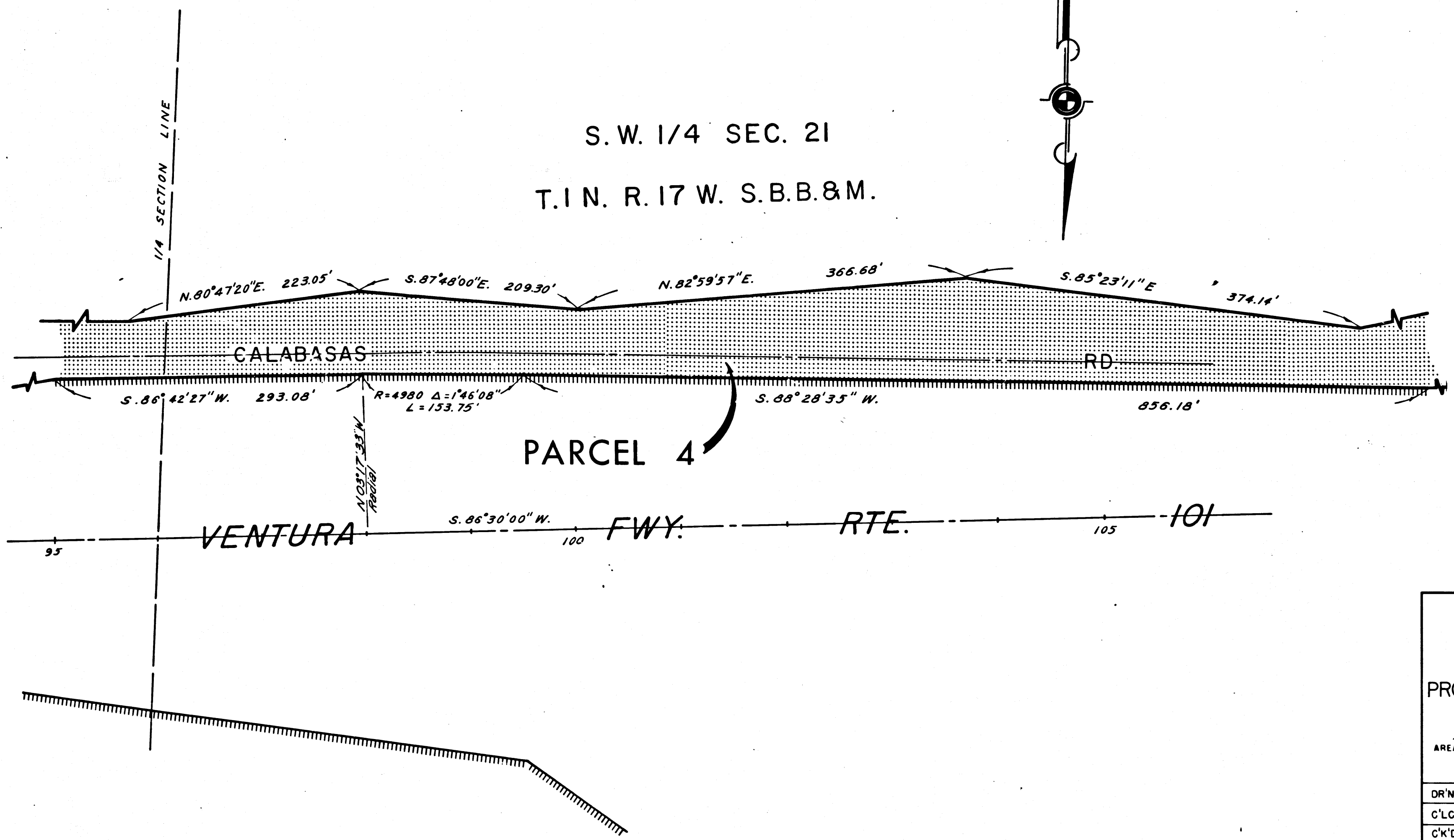
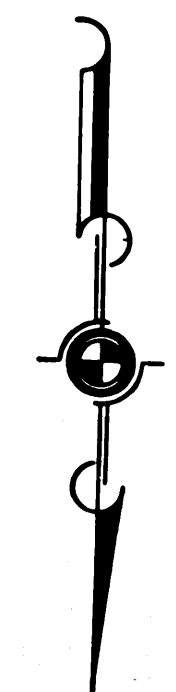
FILED WITH LOS ANGELES  
 COUNTY RECORDER, RAY E. LEE  
 MAY 18 1968

DIST	COUNTY	ROUTE	POST MILES	SHEET NO.	TOTAL SHEETS
07	L.A.	101	28.1/29.9	6	8

*Anthony*  
 DEPUTY DISTRICT ENGINEER  
 May 9, 1968  
 DATE

COUNTY OF LOS ANGELES

S. W. 1/4 SEC. 21  
 T.1 N. R.17 W. S.B.B.&M.



STATE OF CALIFORNIA  
 TRANSPORTATION AGENCY  
 DEPARTMENT OF PUBLIC WORKS  
 DIVISION OF HIGHWAYS

PROPOSED RELINQUISHMENT

0 50 100 150 200

AREA TO BE RELINQUISHED SHOWN THUS [Dotted Box]

ACCESS PROHIBITED [Hatched Box]

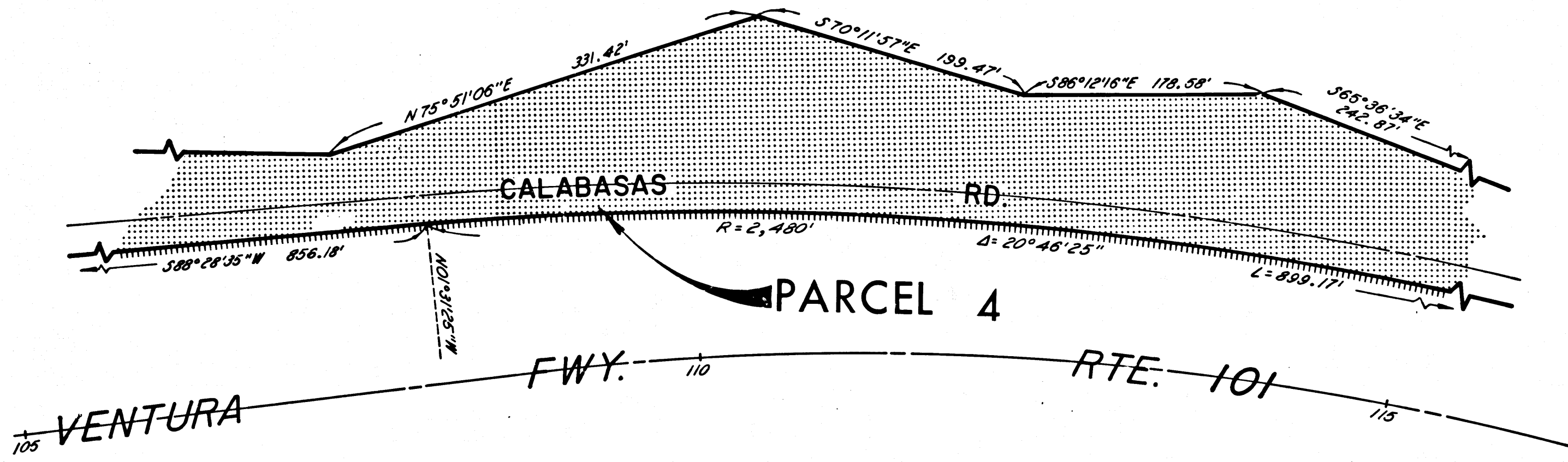
DR'N BY L.S.	R/W MAP NO. F-2218
C'LC BY J.F.F.	REF. MAP NO. 163-7
C'K'D BY S.L.T.	REL-600
REVISED	

FILED WITH LOS ANGELES  
COUNTY RECORDER, RAY E. LEE  
MAY 18 1968

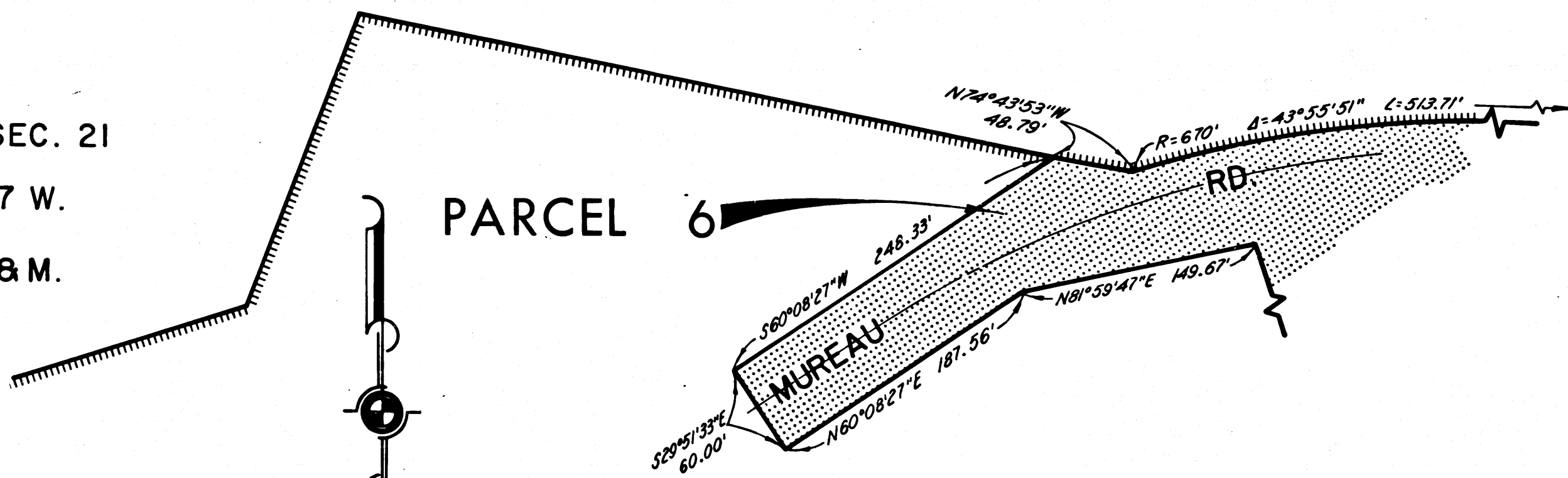
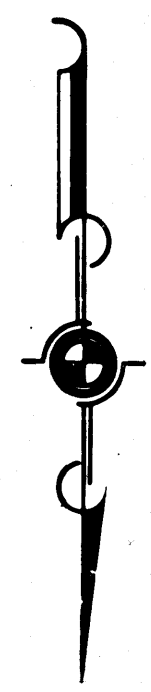
DIST	COUNTY	ROUTE	POST MILES	SHEET NO.	TOTAL SHEETS
07	L.A.	101	23.1/29.9	7	8

*Anthony*  
DEPUTY DISTRICT ENGINEER  
DATE *May 9, 1968*

COUNTY OF LOS ANGELES



SW 1/4 SEC. 21  
T.1N. R.17 W.  
S.B.B.&M.



STATE OF CALIFORNIA  
TRANSPORTATION AGENCY  
DEPARTMENT OF PUBLIC WORKS  
DIVISION OF HIGHWAYS

**PROPOSED RELINQUISHMENT**

0 50 100 150 200

AREA TO BE RELINQUISHED SHOWN THUS

ACCESS PROHIBITED

DR'N BY <i>L.S.</i>	R/W MAP NO. <i>F-2218</i>
C'LC BY <i>J.F.F.</i>	REF. MAP NO. <i>183-7</i>
C'K'D BY <i>S.L.T.</i>	<b>REL-600</b>
REVISED	

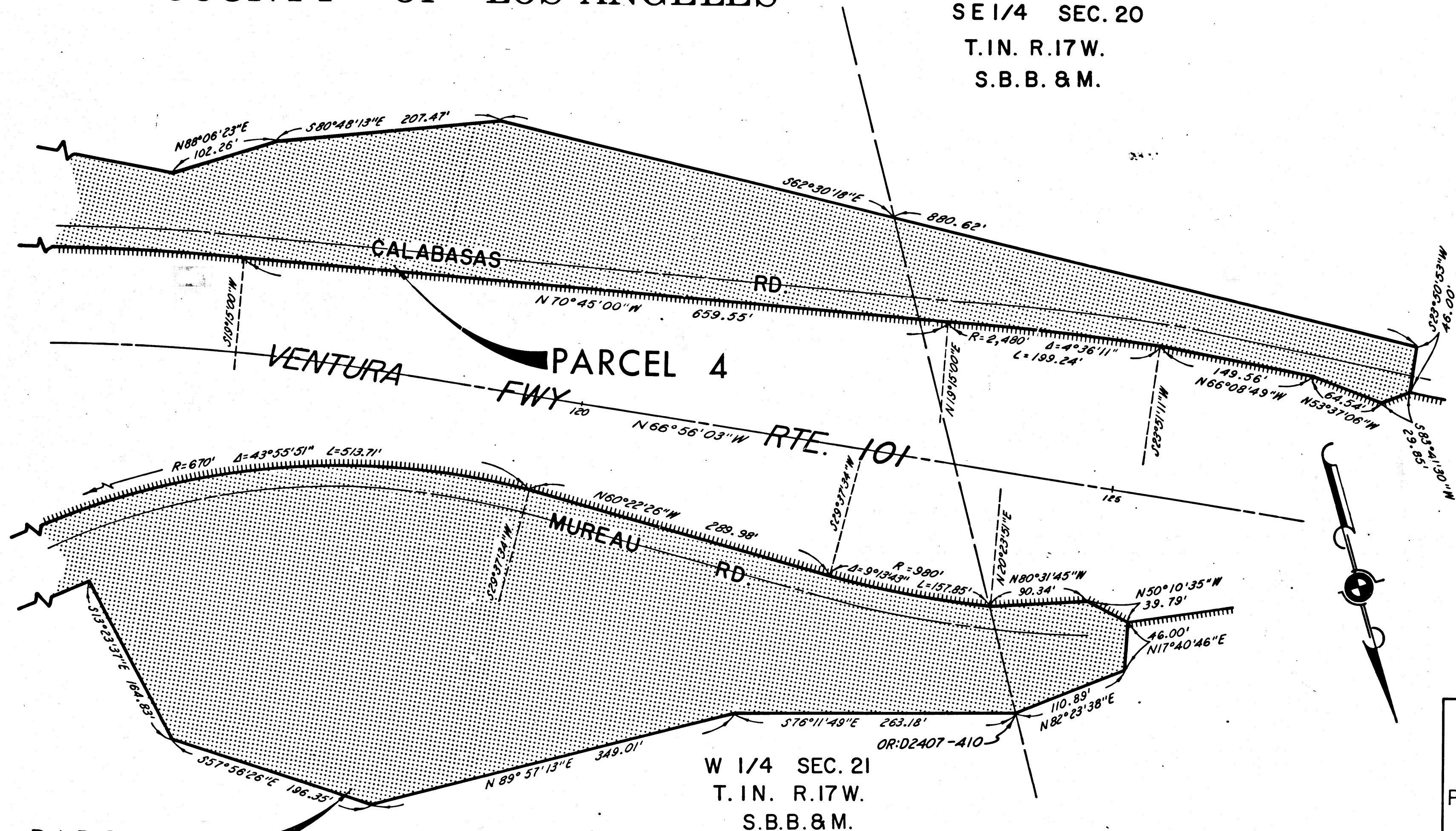
FILED WITH LOS ANGELES  
COUNTY RECORDER, RAY E. IFE  
MAY 18 1968

DIST	COUNTY	ROUTE	POST MILES	SHEET NO.	TOTAL SHEETS
07	L.A.	101	28.1/29.9	8	8

COUNTY OF LOS ANGELES

SE 1/4 SEC. 20  
T.1N. R.17W.  
S.B.B. & M.

*C. S. Anthony*  
DEPUTY DISTRICT ENGINEER  
May 9, 1968  
DATE



STATE OF CALIFORNIA  
TRANSPORTATION AGENCY  
DEPARTMENT OF PUBLIC WORKS  
DIVISION OF HIGHWAYS

**PROPOSED RELINQUISHMENT**

0 50 100 150 200

AREA TO BE RELINQUISHED SHOWN THUS

ACCESS PROHIBITED

DR'N BY C.S.	R/W MAP NO. F-2215
C'LC BY J.F.F.	F-2216
C'K'D BY S.L.F.	REF MAP NO. 183-7
REVISED	REL-600