

DIST	COUNTY	ROUTE	POST MILES	SHEET NO.	TOTAL SHEETS
07	L.A.	91	17.1/194	1	10

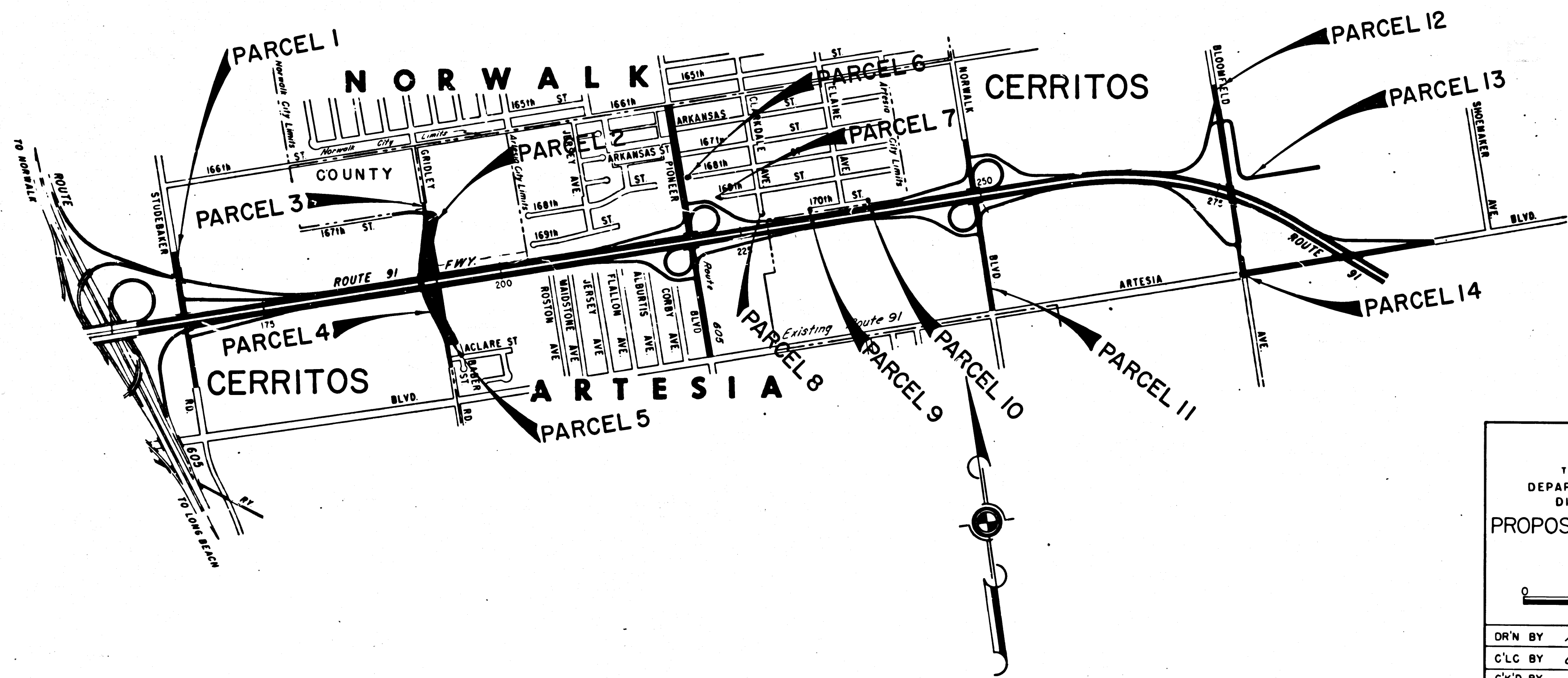
STATE OF CALIFORNIA  
 TRANSPORTATION AGENCY  
 DEPARTMENT OF PUBLIC WORKS  
 DIVISION OF HIGHWAYS

*Anthony*  
 DEPUTY DISTRICT ENGINEER  
 June 25, 1968  
 DATE

RIGHT OF WAY MAPS OF  
**STATE HIGHWAY**

In the County of Los Angeles on Route 91 Fwy.  
 between Studebaker Rd. to Artesia Blvd.

3507  
 FILED  
 AT REQUEST OF  
 DEPT. OF PUBLIC WORKS  
 July 1, 1968  
 29 PAST 2 P.M.  
 IN BOOK 7  
 AT PAGE 9  
 OF STATE HIGHWAY MAPS  
 LOS ANGELES COUNTY, CALIF.  
 RAY E. LEE  
 COUNTY RECORDER  
*Free*



STATE OF CALIFORNIA  
 TRANSPORTATION AGENCY  
 DEPARTMENT OF PUBLIC WORKS  
 DIVISION OF HIGHWAYS  
**PROPOSED RELINQUISHMENT**

SCALE  
 0 600 1200 1800 2400

DR'N BY	M.A.C.	R/W MAP NO. F-1095, F-1096, F-1097
C'LC BY	G.D.W.	REF. MAP NO. 177-1
C'K'D BY	E.J.P.	REL-660,661, 662
REVISED		

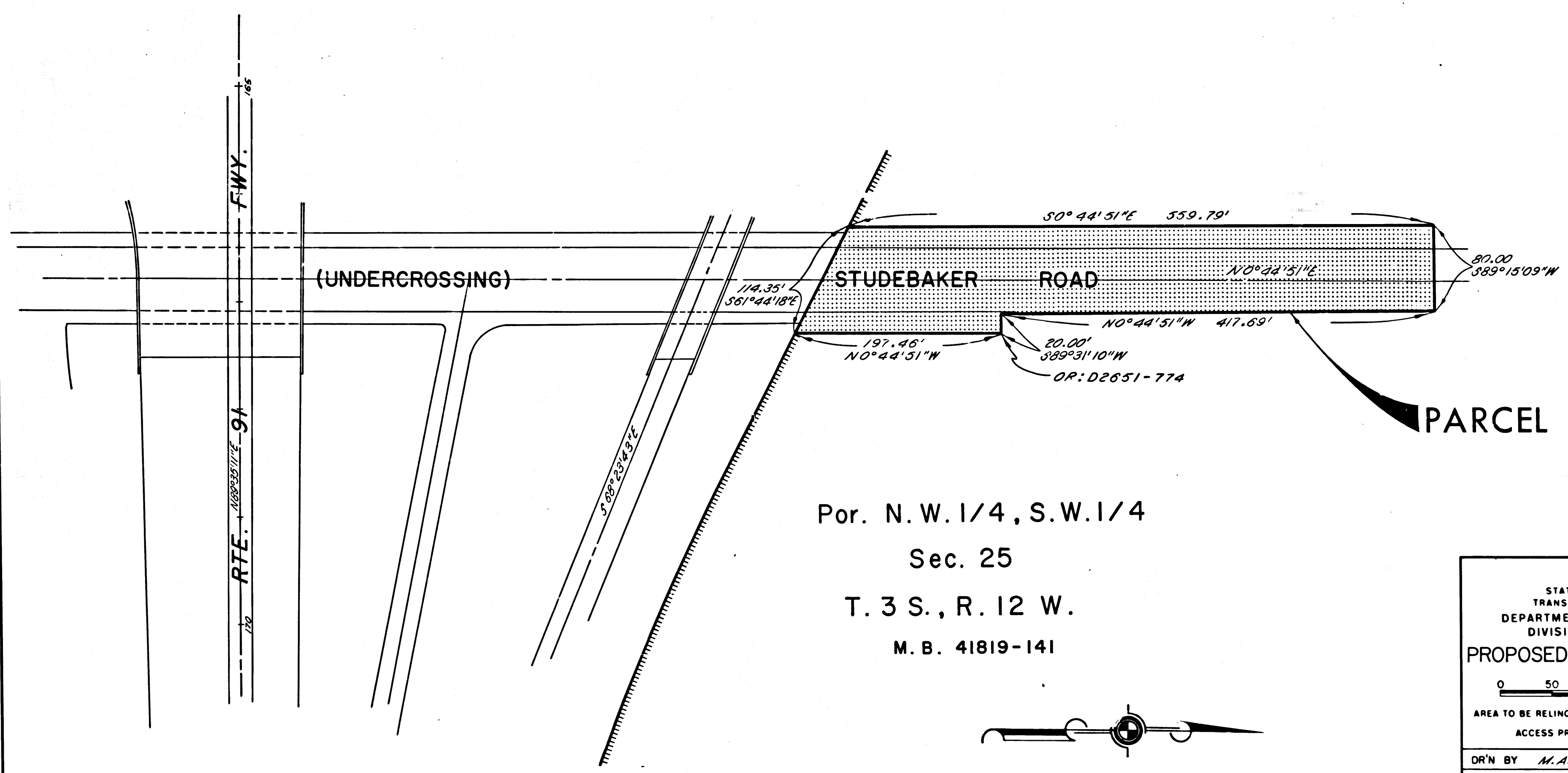
COUNTY ENGINEER'S COPY

FILED WITH LOS ANGELES  
COUNTY RECORDER, RAY E. LEE  
JUL 1 1968

DIST	COUNTY	ROUTE	POST MILES	SHEET NO.	TOTAL SHEETS
07	L.A.	91	17.1/19.4	2	10

# CITY OF CERRITOS

*Anthony*  
DEPUTY DISTRICT ENGINEER  
June 25, 1968  
DATE



STATE OF CALIFORNIA  
TRANSPORTATION AGENCY  
DEPARTMENT OF PUBLIC WORKS  
DIVISION OF HIGHWAYS

**PROPOSED RELINQUISHMENT**

0 50 100 150 200

AREA TO BE RELINQUISHED SHOWN THUS

ACCESS PROHIBITED

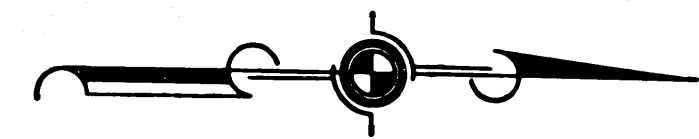
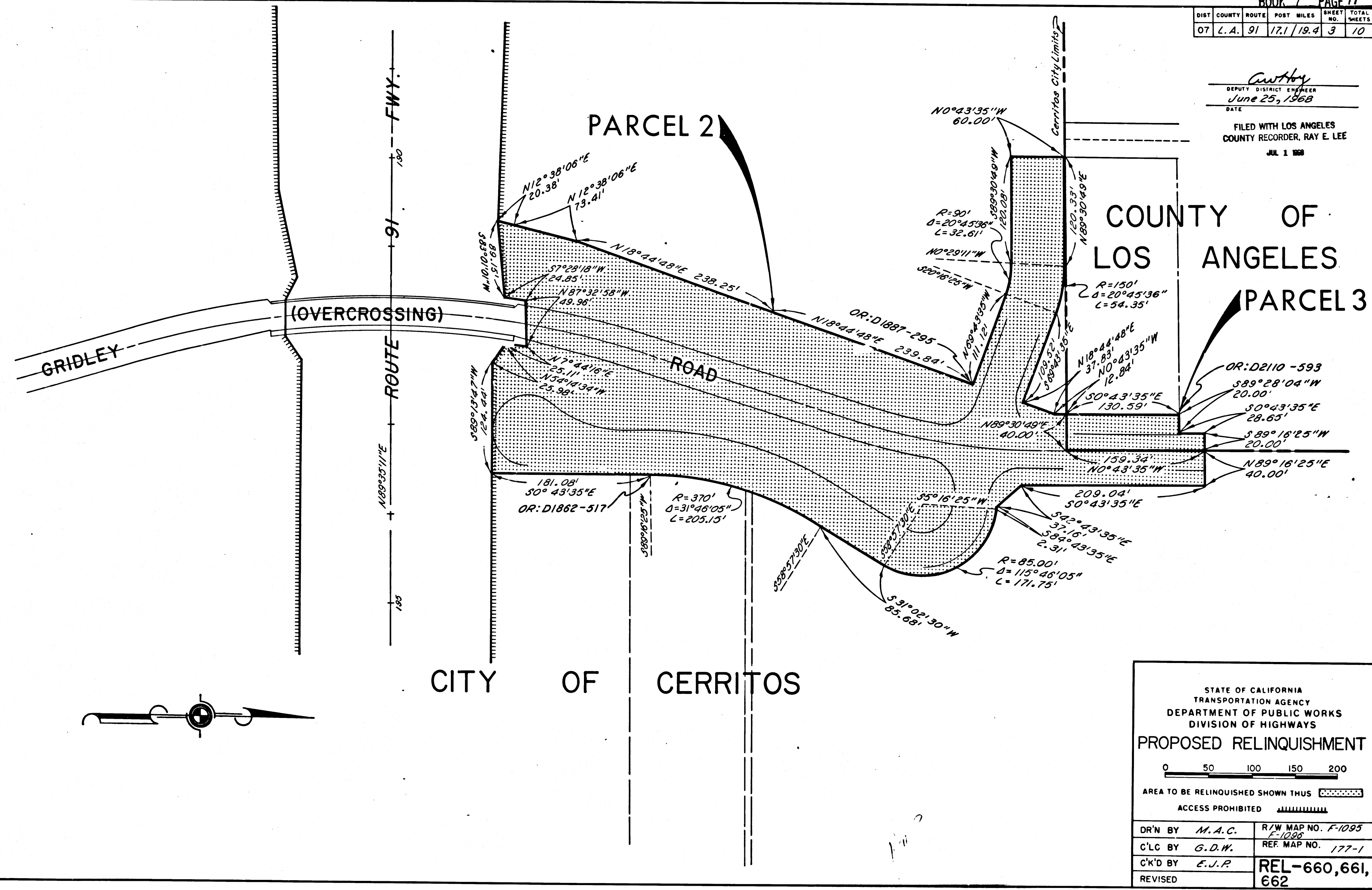
DR'N BY	M.A.C.	R/W MAP NO.	F-1095
C'LC BY	G.D.W.	REF MAP NO.	177-1
C'K'D BY	E.J.P.	REL-	660, 661, 662
REVISED			

COUNTY ENGINEER'S COPY

DIST	COUNTY	ROUTE	POST MILES	SHEET NO.	TOTAL SHEETS
07	L.A.	91	17.1/19.4	3	10

*Curtley*  
 DEPUTY DISTRICT ENGINEER  
 June 25, 1968  
 DATE

FILED WITH LOS ANGELES  
 COUNTY RECORDER, RAY E. LEE  
 JUL 1 1968



STATE OF CALIFORNIA  
 TRANSPORTATION AGENCY  
 DEPARTMENT OF PUBLIC WORKS  
 DIVISION OF HIGHWAYS

**PROPOSED RELINQUISHMENT**

0 50 100 150 200

AREA TO BE RELINQUISHED SHOWN THUS

ACCESS PROHIBITED

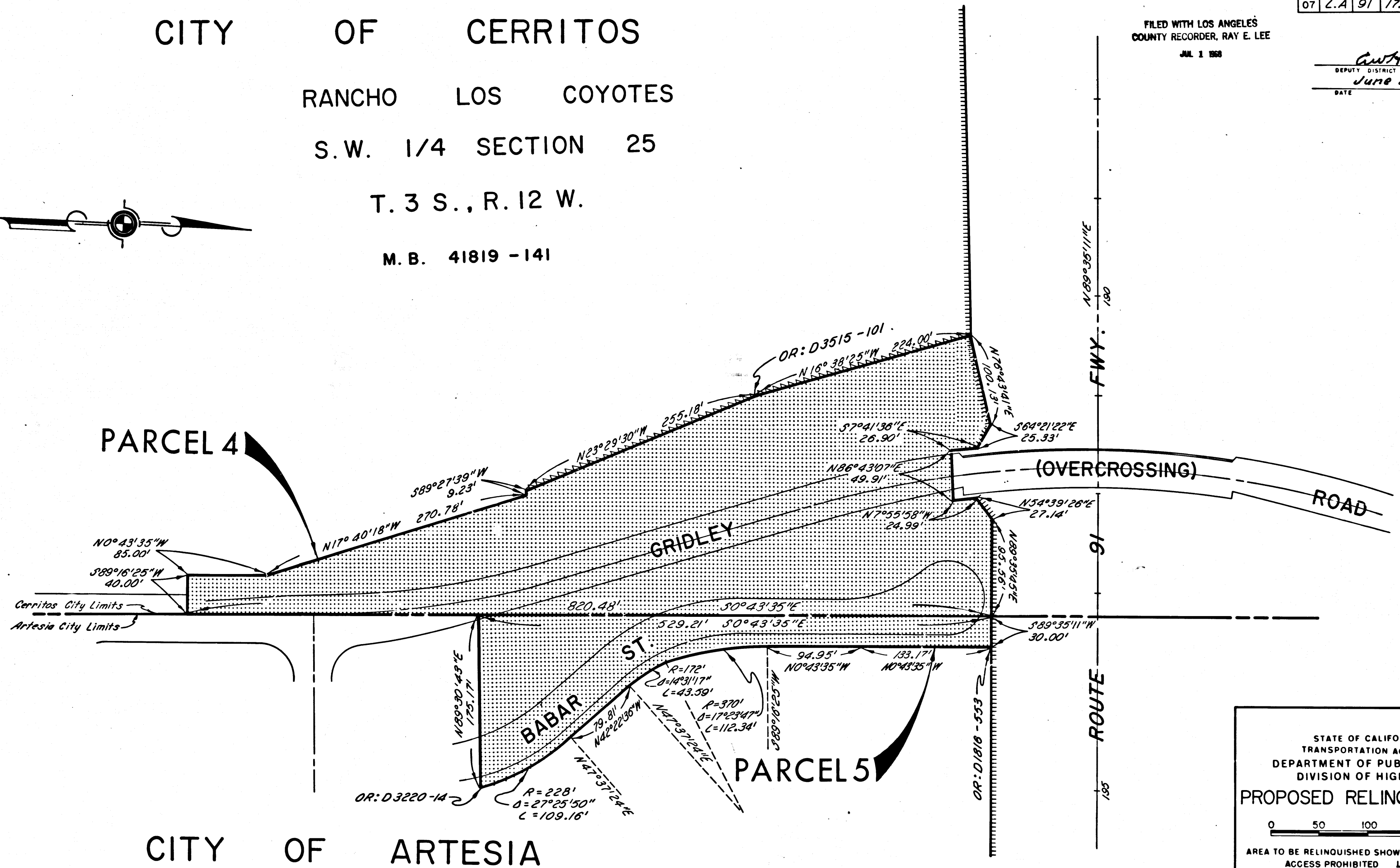
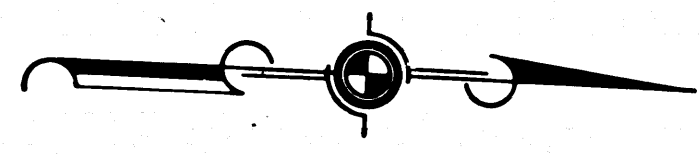
DR'N BY	M.A.C.	R/W MAP NO. F-1095
C'LC BY	G.D.W.	REF. MAP NO. 177-1
C'K'D BY	E.J.P.	REL-660,661,
REVISED		662

DIST	COUNTY	ROUTE	POST MILES	SHEET NO.	TOTAL SHEETS
07	L.A.	91	17.11/84	4	10

CITY OF CERRITOS  
 RANCHO LOS COYOTES  
 S.W. 1/4 SECTION 25  
 T. 3 S., R. 12 W.  
 M. B. 41819 - 141

FILED WITH LOS ANGELES  
 COUNTY RECORDER, RAY E. LEE  
 JUL 1 1968

*Anthony*  
 DEPUTY DISTRICT ENGINEER  
 June 25 1968  
 DATE



STATE OF CALIFORNIA  
 TRANSPORTATION AGENCY  
 DEPARTMENT OF PUBLIC WORKS  
 DIVISION OF HIGHWAYS

**PROPOSED RELINQUISHMENT**

0 50 100 150 200

AREA TO BE RELINQUISHED SHOWN THUS

ACCESS PROHIBITED

RELINQUISH ACCESS RIGHTS

DR'N BY	M. A. C.	R/W MAP NO.	F-1095
			F-1098
C'LC BY	G. D. W.	REF. MAP NO.	177-1
C'K'D BY	E. J. R.		
REVISED			REL-660,661, 662

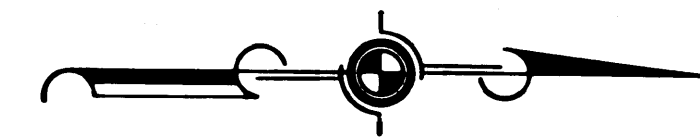
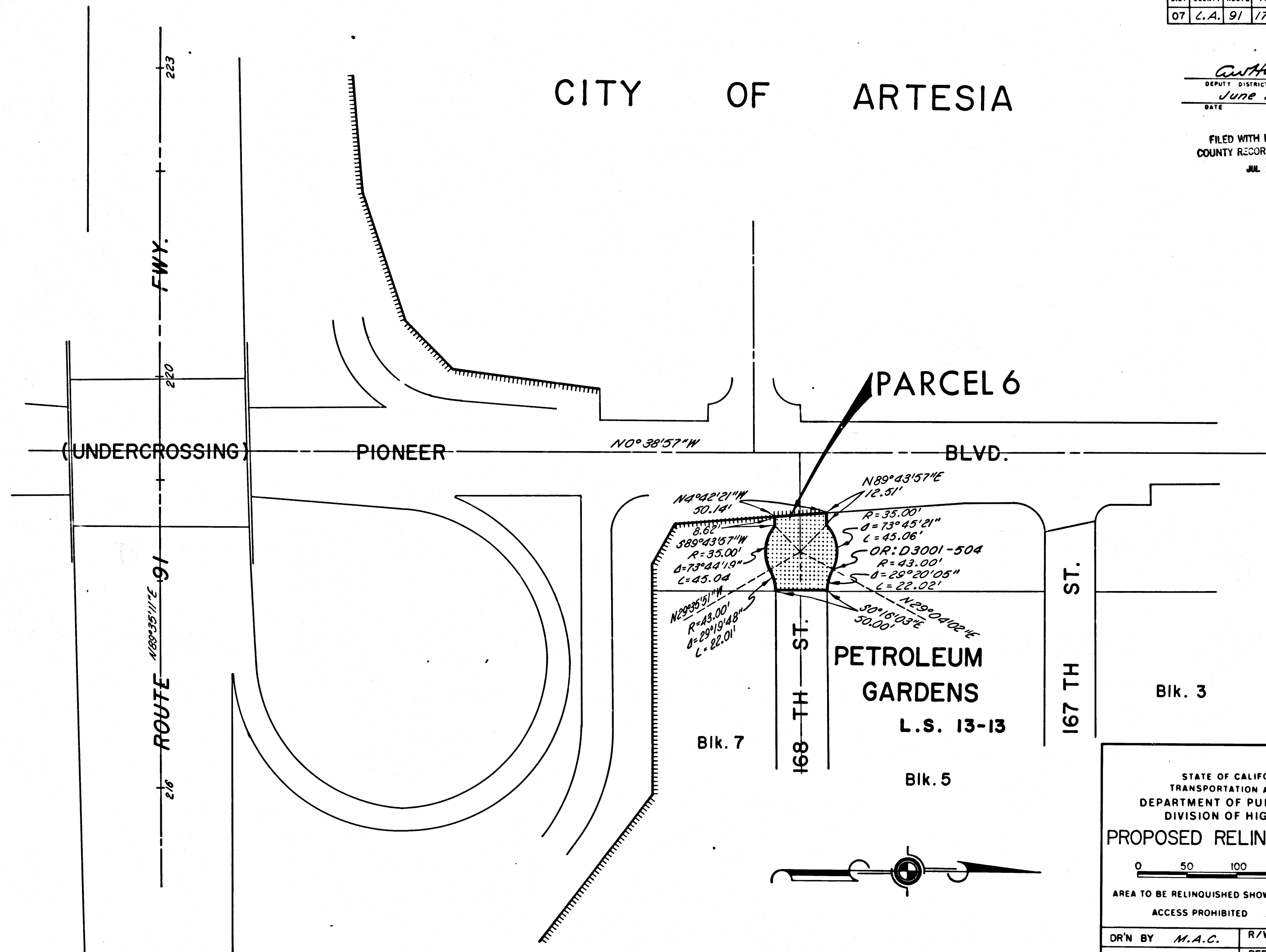
COUNTY ENGINEER'S COPY

DIST	COUNTY	ROUTE	POST MILES	SHEET NO.	TOTAL SHEETS
07	L.A.	91	17.1/19.4	5	10

*Anthony*  
 DEPUTY DISTRICT ENGINEER  
 June 25, 1968  
 DATE

FILED WITH LOS ANGELES  
 COUNTY RECORDER, RAY E. LEE  
 JUL 1 1968

CITY OF ARTESIA



STATE OF CALIFORNIA  
 TRANSPORTATION AGENCY  
 DEPARTMENT OF PUBLIC WORKS  
 DIVISION OF HIGHWAYS

**PROPOSED RELINQUISHMENT**

0 50 100 150 200

AREA TO BE RELINQUISHED SHOWN THUS [Hatched Box]  
 ACCESS PROHIBITED [Hatched Line]

DR'N BY	M.A.C.	R/W MAP NO.	F-1096
C'LC BY	G.D.W.	REF. MAP NO.	177-1
C'K'D BY	E.J.R.	REL-	660, 661, 662
REVISED			

DIST	COUNTY	ROUTE	POST MILES	SHEET NO.	TOTAL SHEETS
07	L.A.	91	17.1/19.4	6	10

CITY OF ARTESIA

PETROLEUM GARDENS

L.S. 13-13

BLOCK 7

PARCEL 7

CLARKDALE AVE.

169 th. ST.

BLOCK 10

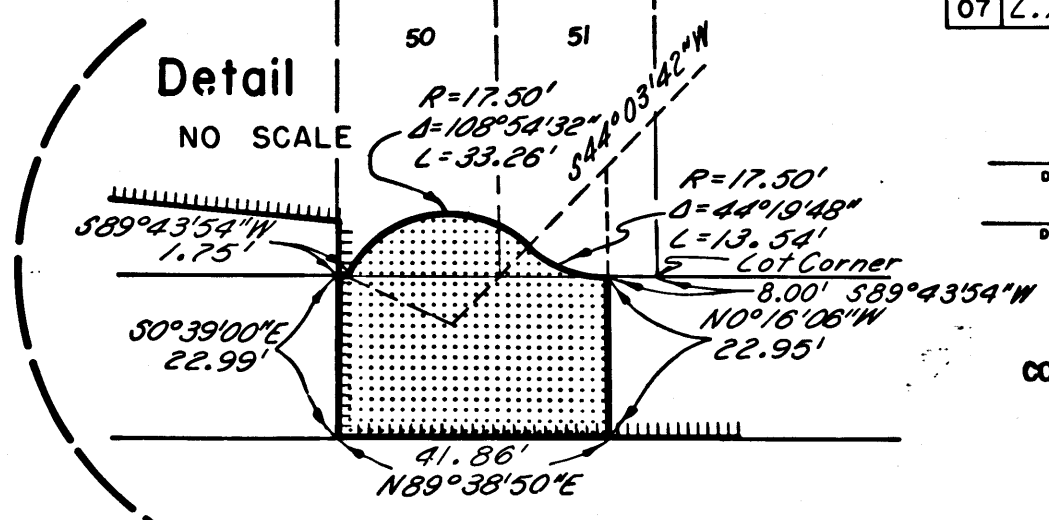
PARCEL 9

PARCEL 8

PIONEER BLVD.

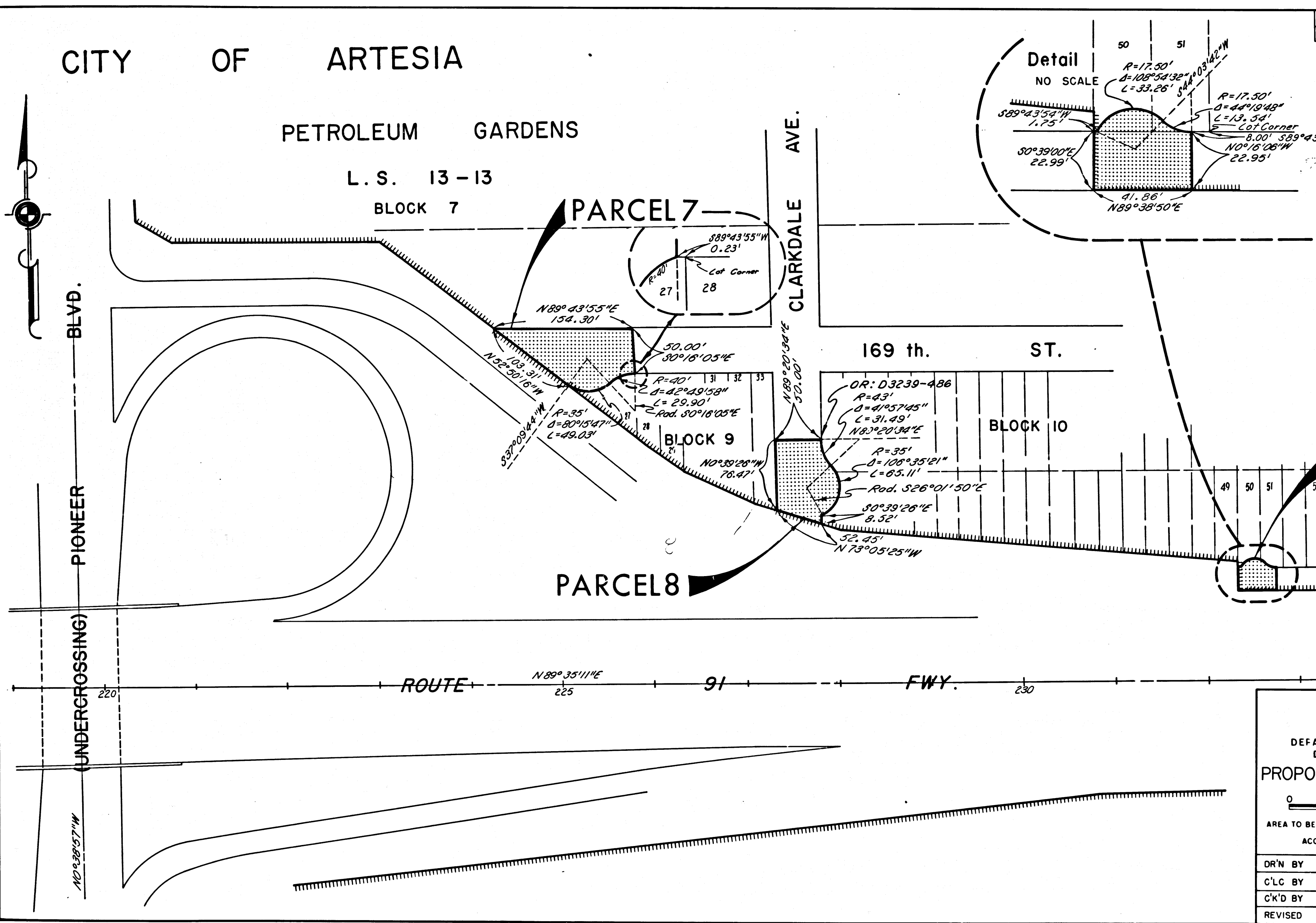
(UNDERCROSSING)

ROUTE 91 FWY.



DEPUTY DISTRICT ENGINEER  
 DATE June 25, 1968

FILED WITH LOS ANGELES COUNTY RECORDER, RAY E. LEE  
 JUL 1 1968



STATE OF CALIFORNIA  
 TRANSPORTATION AGENCY  
 DEPARTMENT OF PUBLIC WORKS  
 DIVISION OF HIGHWAYS

**PROPOSED RELINQUISHMENT**

0 50 100 150 200

AREA TO BE RELINQUISHED SHOWN THUS [stippled pattern]

ACCESS PROHIBITED [hatched pattern]

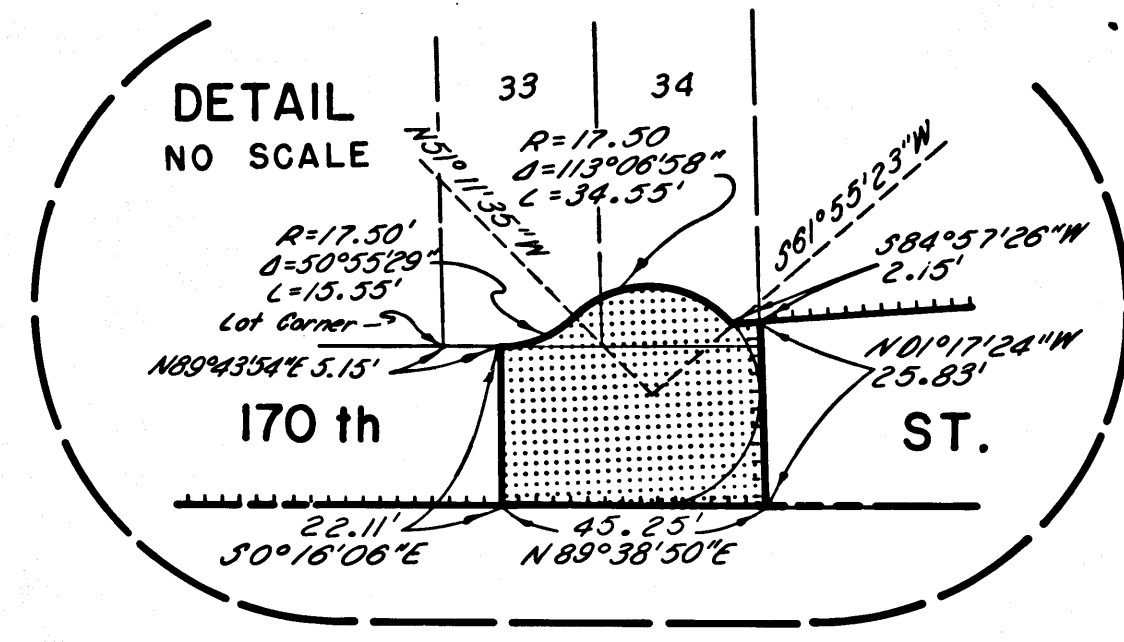
DR'N BY	M.A.C.	R/W MAP NO.	F1096
C/LC BY	G.D.W.	REF. MAP NO.	177-1
C/K'D BY	E.J.R.	<b>REL-660,661,662</b>	
REVISED			

COUNTY ENGINEER'S COPY

DIST	COUNTY	ROUTE	POST MILES	SHEET NO.	TOTAL SHEETS
07	L.A.	91	17.1/19.4	7	10

*Anthony*  
 DEPUTY DISTRICT ENGINEER  
 June 25, 1968  
 DATE

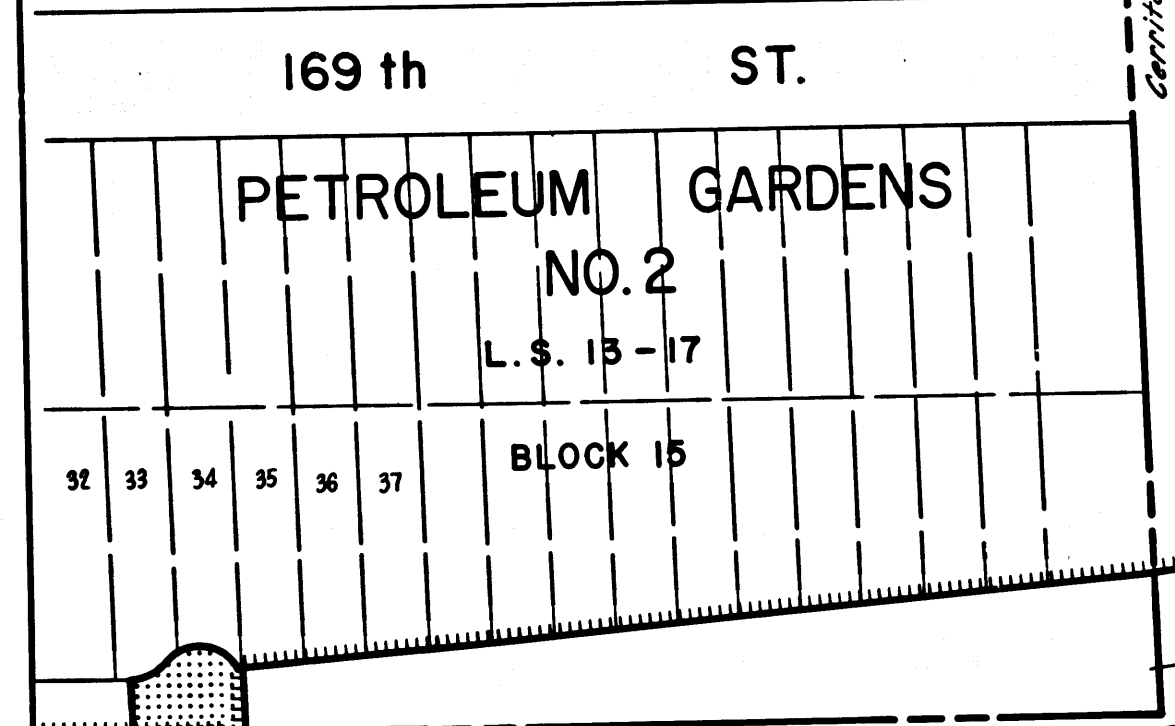
FILED WITH LOS ANGELES  
 COUNTY RECORDER, RAY E. LEE  
 JUL 1 1968



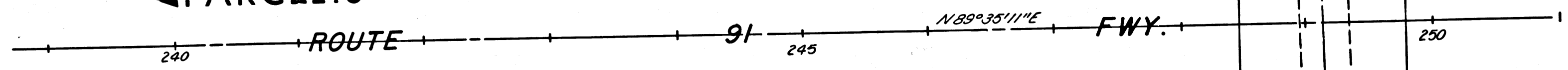
RANCHO LOS COYOTES  
 SEC. 30, T. 3 S., R. 11 W.  
 M. B. 41819 - 141

CITY OF  
 ARTESIA

CITY OF  
 CERRITOS



PARCEL 10



STATE OF CALIFORNIA  
 TRANSPORTATION AGENCY  
 DEPARTMENT OF PUBLIC WORKS  
 DIVISION OF HIGHWAYS

**PROPOSED RELINQUISHMENT**

0 50 100 150 200

AREA TO BE RELINQUISHED SHOWN THUS

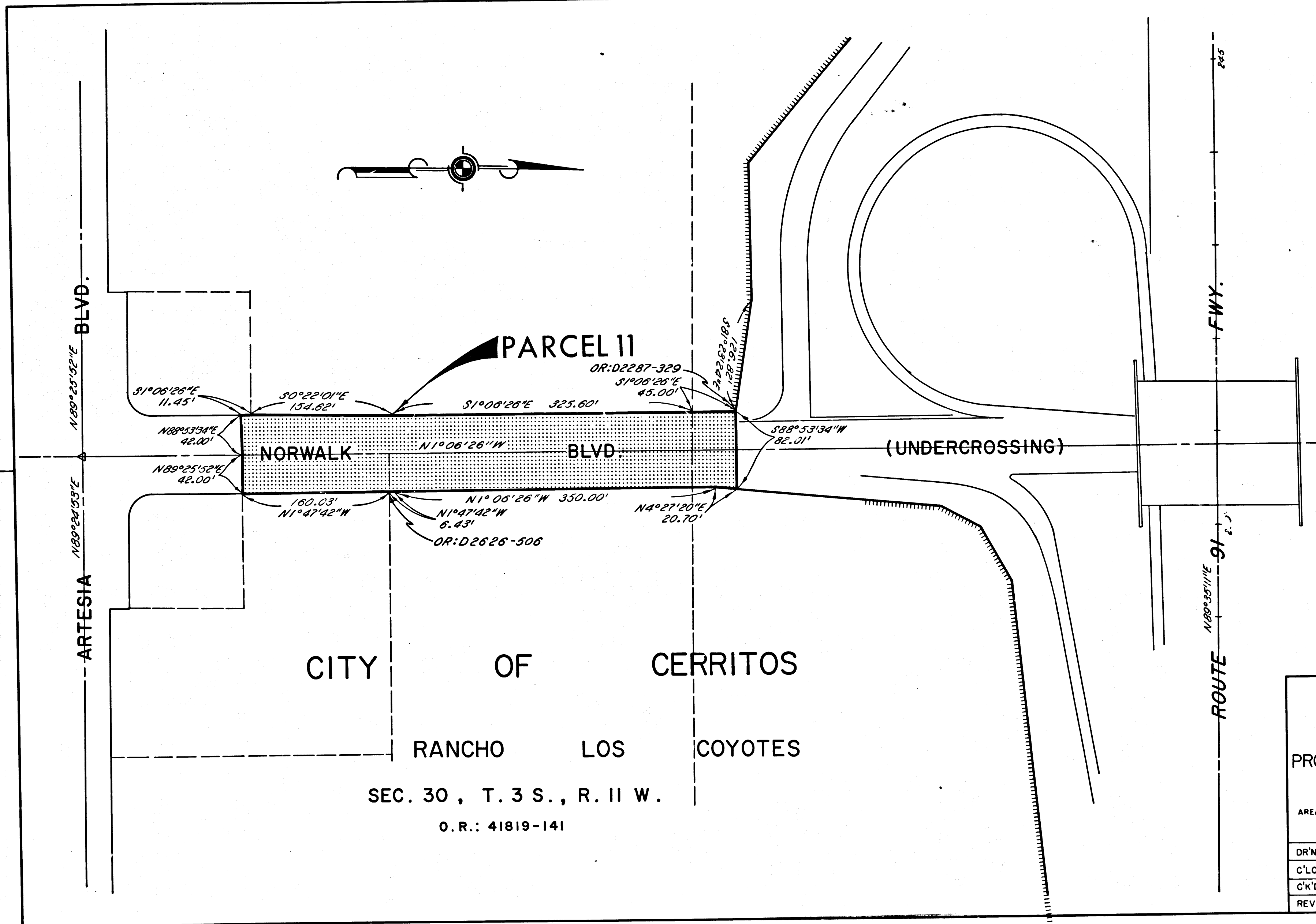
ACCESS PROHIBITED

DR'N BY	M. A. C.	R/W MAP NO.	F1098
C'LC BY	G. D. W.	REF. MAP NO.	177-1
C'K'D BY	E. J. P.	REL-	660, 661, 662
REVISED			

DIST	COUNTY	ROUTE	POST MILES	SHEET NO.	TOTAL SHEETS
07	L.A.	91	17.1/19.4	8	10

*G. D. W.*  
 DEPUTY DISTRICT ENGINEER  
 June 25, 1968  
 DATE

FILED WITH LOS ANGELES  
 COUNTY RECORDER, RAY E. LEE  
 JUL 1 1968



STATE OF CALIFORNIA  
 TRANSPORTATION AGENCY  
 DEPARTMENT OF PUBLIC WORKS  
 DIVISION OF HIGHWAYS

**PROPOSED RELINQUISHMENT**

0 50 100 150 200

AREA TO BE RELINQUISHED SHOWN THUS

ACCESS PROHIBITED

DR'N BY <i>M. A. C.</i>	R/W MAP NO. <i>F-1096</i>
C'LC BY <i>G. D. W.</i>	REF. MAP NO. <i>177-1</i>
C'K'D BY <i>E. J. P.</i>	<b>REL-660,661,662</b>
REVISED	

COUNTY ENGINEER'S COPY



DIST	COUNTY	ROUTE	POST MILES	SHEET NO.	TOTAL SHEETS
07	L.A.	91	17.1/19.4	9	10

*Anthony*  
 DEPUTY DISTRICT ENGINEER  
 June 25, 1968  
 DATE

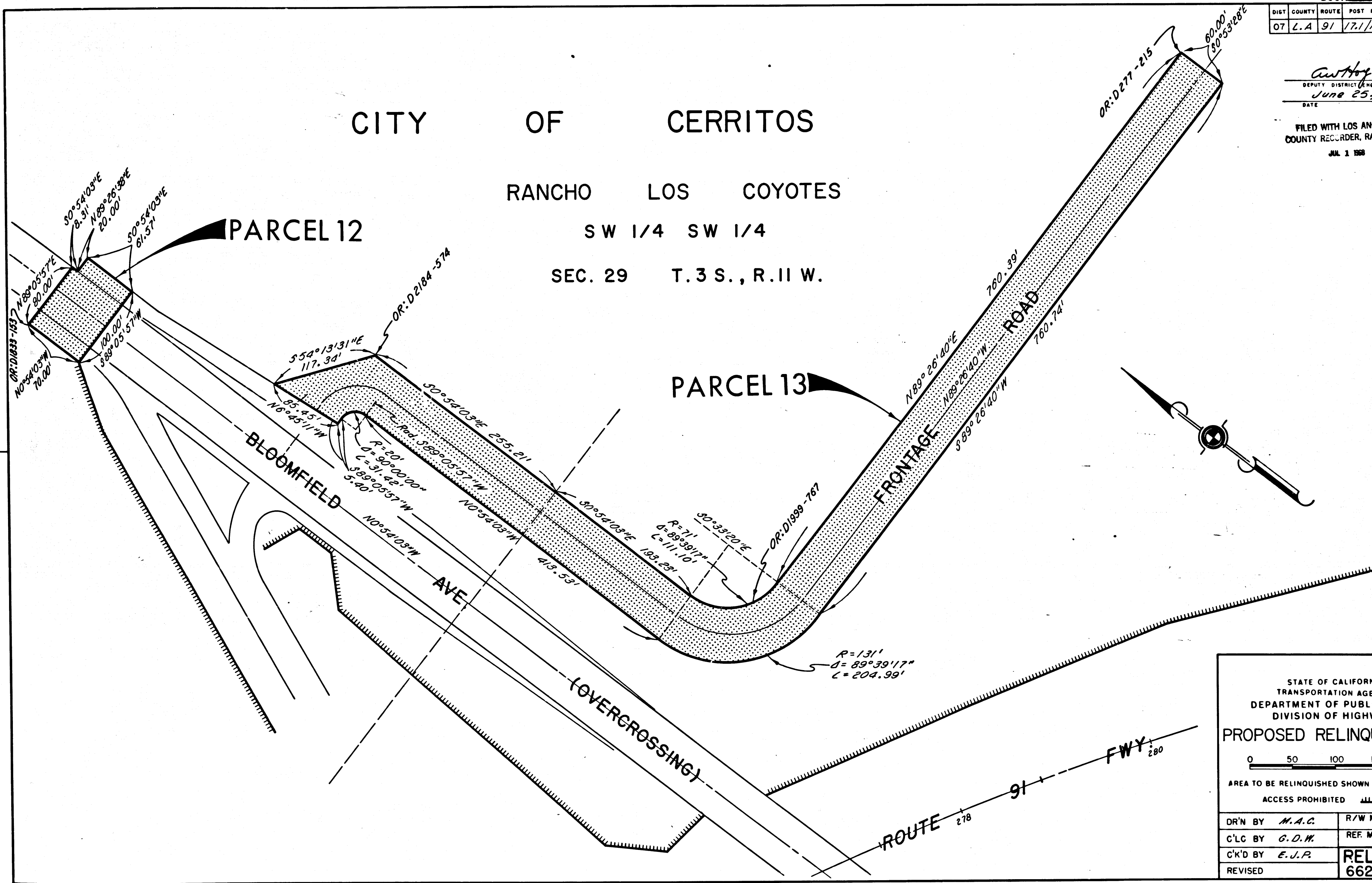
FILED WITH LOS ANGELES  
 COUNTY RECORDER, RAY E. LEE  
 JUL 1 1968

CITY OF CERRITOS

RANCHO LOS COYOTES

SW 1/4 SW 1/4

SEC. 29 T.3 S., R.11 W.



STATE OF CALIFORNIA  
 TRANSPORTATION AGENCY  
 DEPARTMENT OF PUBLIC WORKS  
 DIVISION OF HIGHWAYS

**PROPOSED RELINQUISHMENT**

0 50 100 150 200

AREA TO BE RELINQUISHED SHOWN THUS

ACCESS PROHIBITED

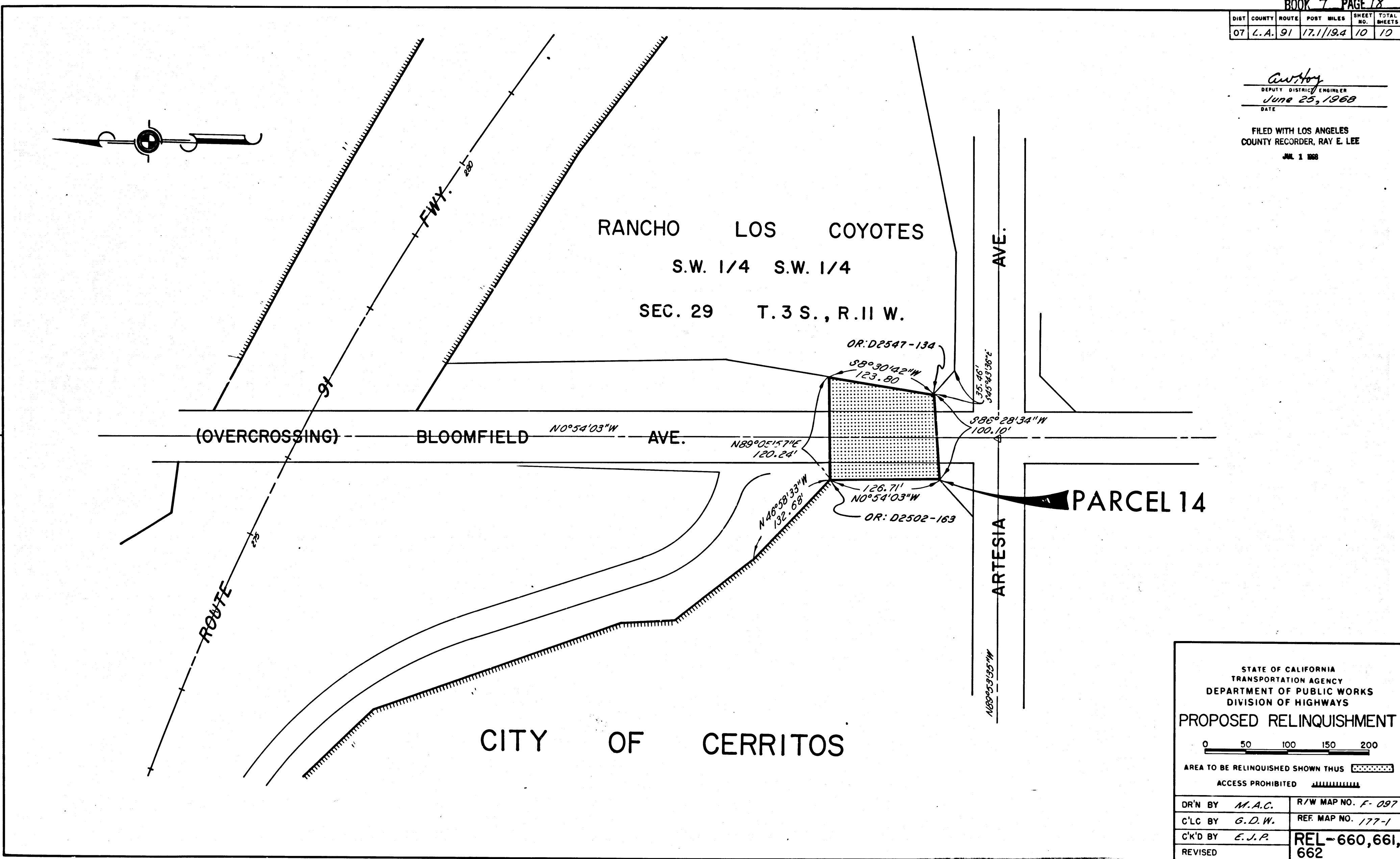
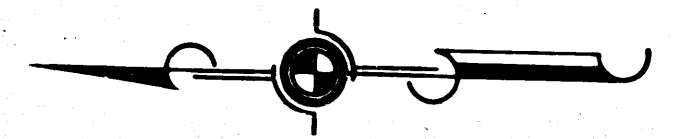
DR'N BY <i>M.A.C.</i>	R/W MAP NO. <i>F-1097</i>
C'LC BY <i>G.D.M.</i>	REF. MAP NO. <i>177-1</i>
C'K'D BY <i>E.J.R.</i>	REL-660,661, 662
REVISED	

COUNTY ENGINEER'S COPY

DIST	COUNTY	ROUTE	POST MILES	SHEET NO.	TOTAL SHEETS
07	L.A.	91	17.1/19.4	10	10

*Anthony*  
 DEPUTY DISTRICT ENGINEER  
 June 25, 1968  
 DATE

FILED WITH LOS ANGELES  
 COUNTY RECORDER, RAY E. LEE  
 JUL 1 1968



STATE OF CALIFORNIA  
 TRANSPORTATION AGENCY  
 DEPARTMENT OF PUBLIC WORKS  
 DIVISION OF HIGHWAYS

**PROPOSED RELINQUISHMENT**

0 50 100 150 200

AREA TO BE RELINQUISHED SHOWN THUS

ACCESS PROHIBITED

DR'N BY	M.A.C.	R/W MAP NO.	F-097
C'LC BY	G.D.W.	REF. MAP NO.	177-1
C'K'D BY	E.J.P.	REL-	660,661, 662
REVISED			