

DIST	COUNTY	ROUTE	POST MILES	SHEET NO.	TOTAL SHEETS
07	L.A.	5	3.0/3.4	1	2

STATE OF CALIFORNIA
 TRANSPORTATION AGENCY
 DEPARTMENT OF PUBLIC WORKS
 DIVISION OF HIGHWAYS

Ray E. Lee
 DEPUTY DISTRICT ENGINEER
 June 28, 1968
 DATE

RIGHT OF WAY MAPS OF
STATE HIGHWAY

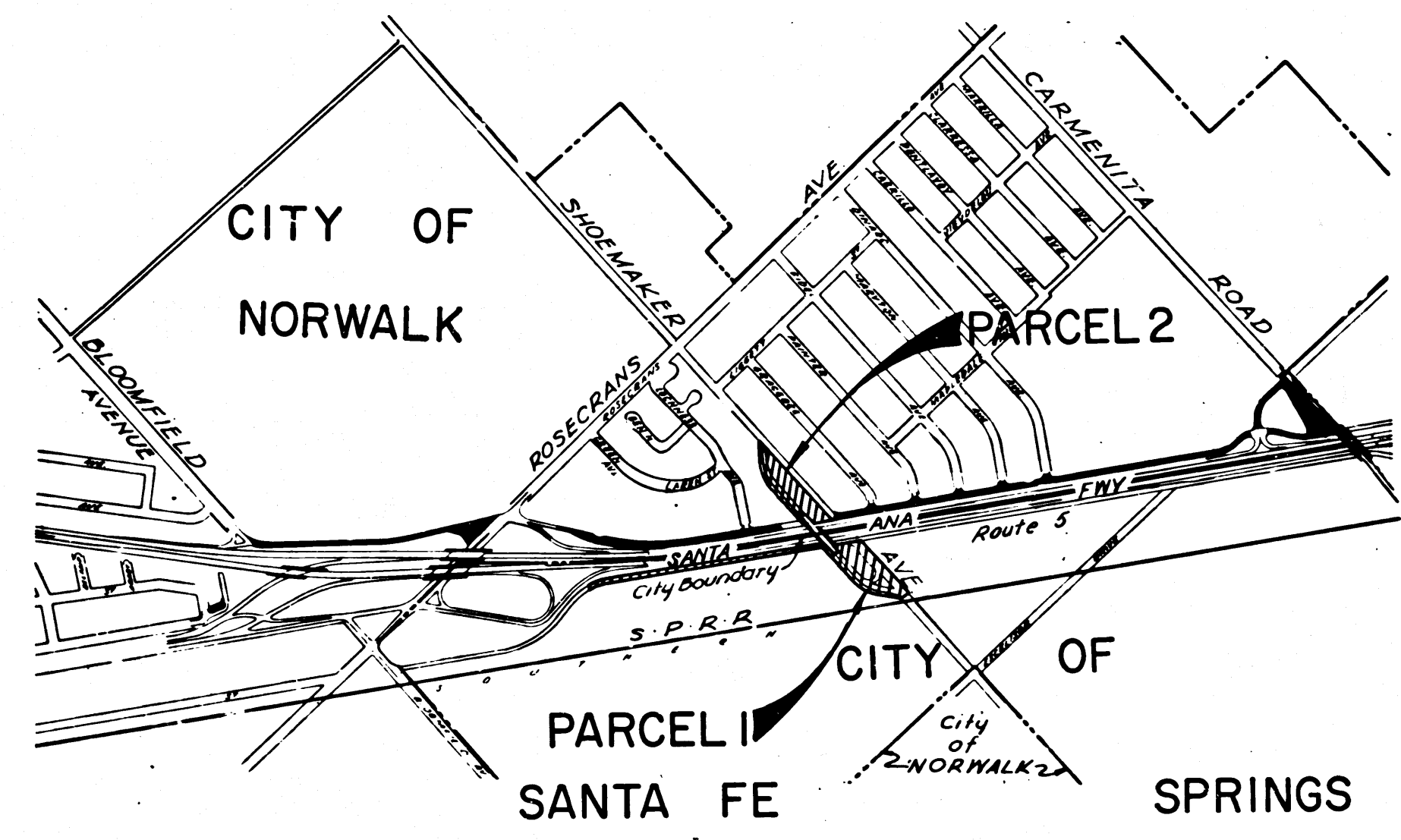
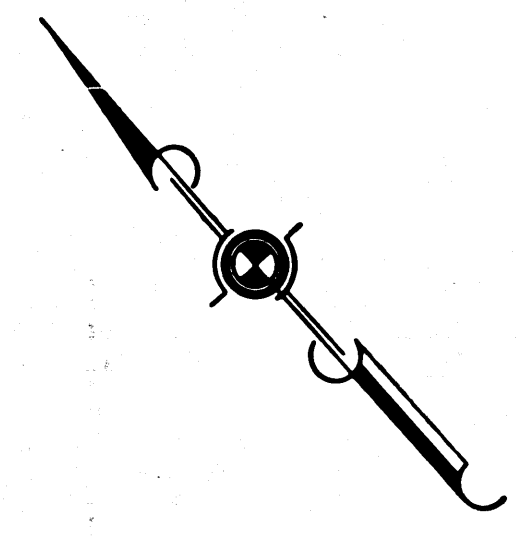
In the County of Los Angeles at
 Shoemaker Ave. and Route 5

3144

FILED
 AT REQUEST OF
 DEPT. OF PUBLIC WORKS
 JULY 2, 1968
 4:44 PAST 2 P.M.
 IN BOOK 7
 AT PAGE 19
 OF STATE HIGHWAY MAPS
 LOS ANGELES COUNTY, CALIF.
 RAY E. LEE
 COUNTY RECORDER
Free

2144

7/19-20



INTERSTATE
 STATE OF CALIFORNIA
 TRANSPORTATION AGENCY
 DEPARTMENT OF PUBLIC WORKS
 DIVISION OF HIGHWAYS
PROPOSED RELINQUISHMENT

SCALE
 0 600 1200 1800 2400

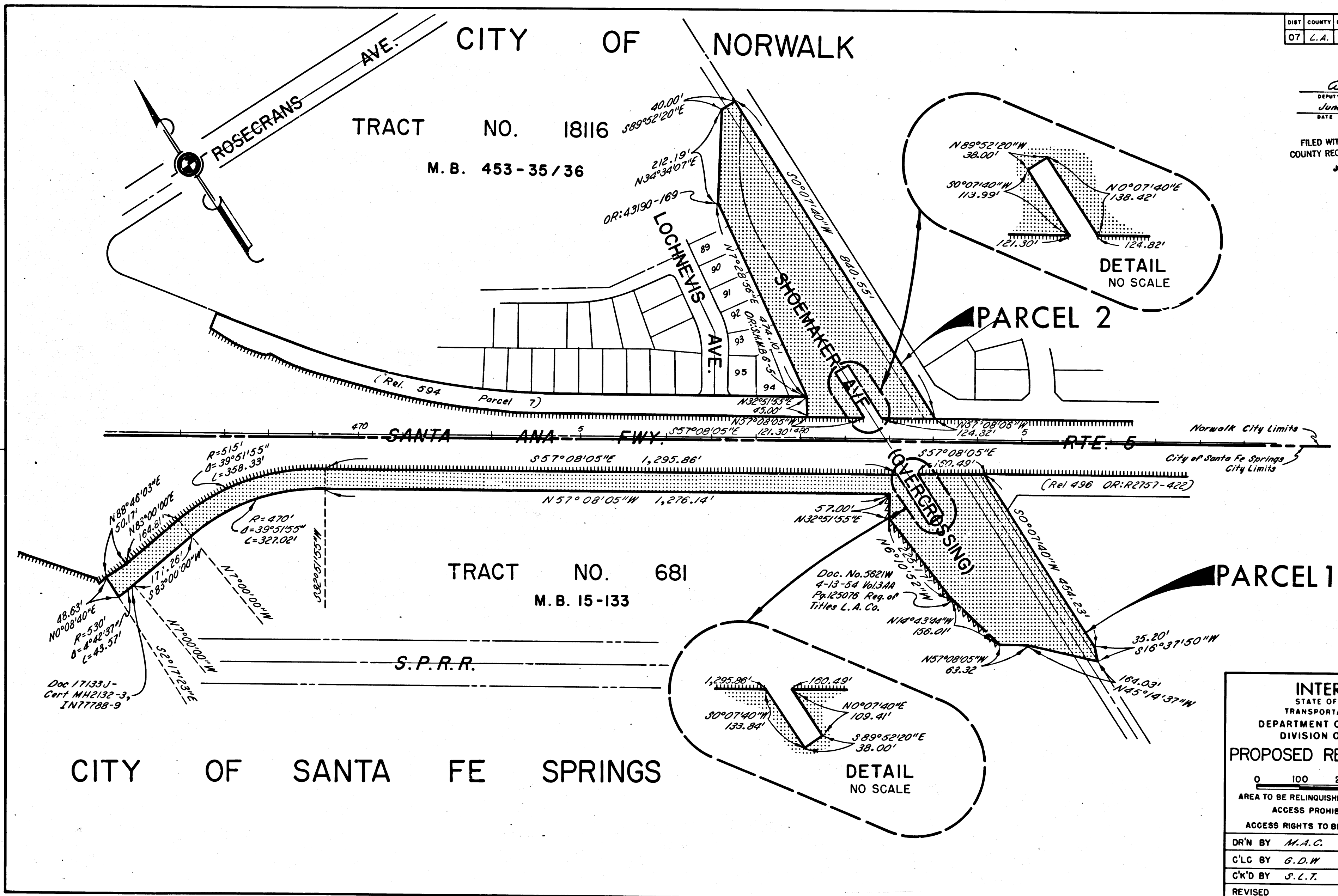
DR'N BY	M.A.C.	R/W MAP NO.	F-2000
C'LC BY	G.D.M.	REF. MAP NO.	
JK'D BY	S.L.T.	REL-595,620	
REVISED			

COUNTY ENGINEER'S COPY

DIST	COUNTY	ROUTE	POST MILES	SHEET NO.	TOTAL SHEETS
07	L.A.	5	3.0/3.4	2	2

Ray E. Lee
 DEPUTY DISTRICT ENGINEER
 June 28, 1968
 DATE

FILED WITH LOS ANGELES
 COUNTY RECORDER, RAY E. LEE
 JUL 2 1968



INTERSTATE
 STATE OF CALIFORNIA
 TRANSPORTATION AGENCY
 DEPARTMENT OF PUBLIC WORKS
 DIVISION OF HIGHWAYS

PROPOSED RELINQUISHMENT

0 100 200 300 400

AREA TO BE RELINQUISHED SHOWN THUS [Symbol]

ACCESS PROHIBITED [Symbol]

ACCESS RIGHTS TO BE RELINQUISHED [Symbol]

DR'N BY <i>M.A.C.</i>	R/W MAP NO. <i>F-2000</i>
C'LC BY <i>G.D.W.</i>	REF. MAP NO.
C'K'D BY <i>S.L.T.</i>	REL-595,620
REVISED	