

DIST	COUNTY	ROUTE	POST MILES	SHEET NO.	TOTAL SHEETS
07	LA	27	17.6	1	2

STATE OF CALIFORNIA
 TRANSPORTATION AGENCY
 DEPARTMENT OF PUBLIC WORKS
 DIVISION OF HIGHWAYS

Curtis
 DEPUTY DISTRICT ENGINEER
 July 22, 1968
 DATE

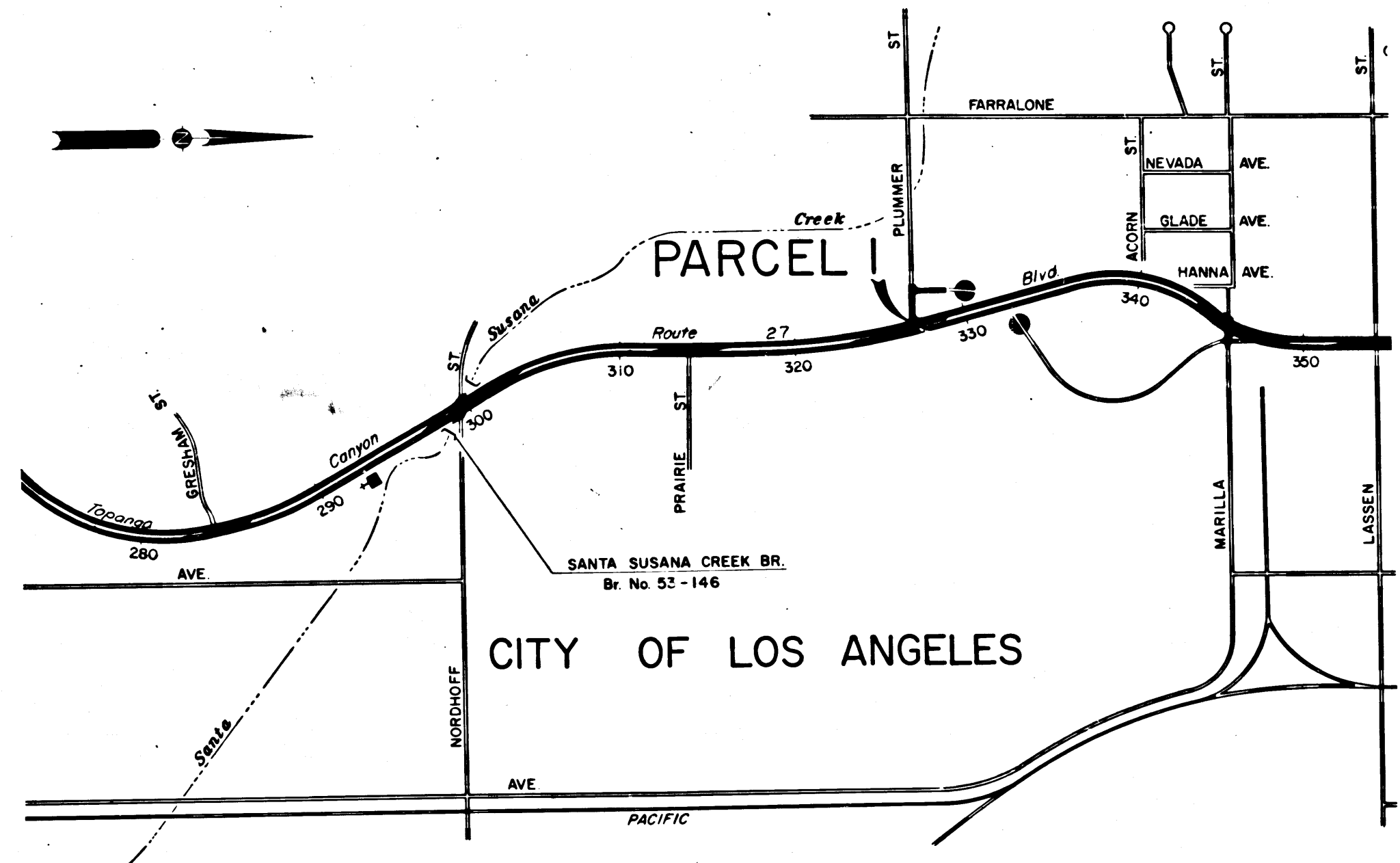
RIGHT OF WAY MAPS OF
STATE HIGHWAY

2792

FILED
 AT REQUEST OF
 DEPT. OF PUBLIC WORKS
 JULY 24, 1968
 36 MIN. PAST 1 P.M.

In Los Angeles on Topanga Canyon Boulevard at Plummer St.

IN BOOK 7
 AT PAGE 22
 OF STATE HIGHWAY MAPS
 LOS ANGELES COUNTY, CALIF.
 BY E. LEE
 COUNTY RECORDER
Free



134
 7/22/68

STATE OF CALIFORNIA
 TRANSPORTATION AGENCY
 DEPARTMENT OF PUBLIC WORKS
 DIVISION OF HIGHWAYS
PROPOSED ABANDONMENT

SCALE
 0 500 1000 1500 2000

DR'N BY L.S.	R/W MAP NO.
C'LC BY M.M.	REF. MAP NO. 6765
C'K'D BY S.L.T.	ABD-77
REVISED 7-10-68	

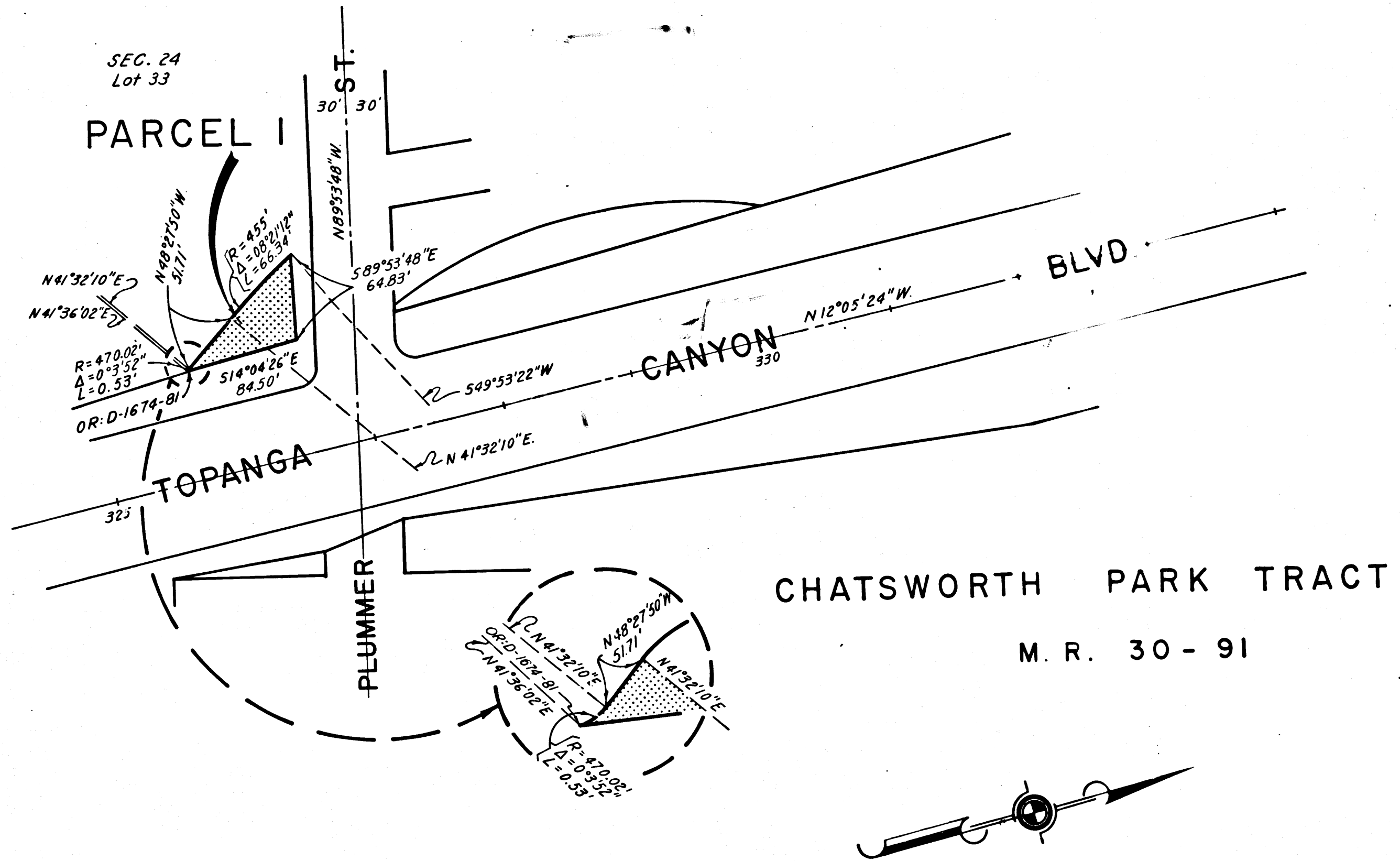
COUNTY ENGINEER'S COPY

DIST	COUNTY	ROUTE	POST MILES	SHEET NO.	TOTAL SHEETS
07	LA	27	17.6	2	2

CITY OF LOS ANGELES

Anthony
 DEPUTY DISTRICT ENGINEER
 July 22, 1968
 DATE

FILED WITH LOS ANGELES
 COUNTY RECORDER, RAY E. LEE
 JUL 24 1968



STATE OF CALIFORNIA
 TRANSPORTATION AGENCY
 DEPARTMENT OF PUBLIC WORKS
 DIVISION OF HIGHWAYS

PROPOSED ABANDONMENT

AREA TO BE ABANDONED SHOWN THUS

ACCESS PROHIBITED

0 50 100 150 200

DR'N BY	L.S.	R/W MAP NO.	
C'LC BY	M.M.	REF. MAP NO.	6765
C'K'D BY	S.L.T.		ABD.-77
REVISED	7-9-68		

COUNTY ENGINEER'S COPY