

DIST	COUNTY	ROUTE	POST MILES	SHEET NO.	TOTAL SHEETS
07	L.A.	170	17.8/19.7	1	5

STATE OF CALIFORNIA
 TRANSPORTATION AGENCY
 DEPARTMENT OF PUBLIC WORKS
 DIVISION OF HIGHWAYS

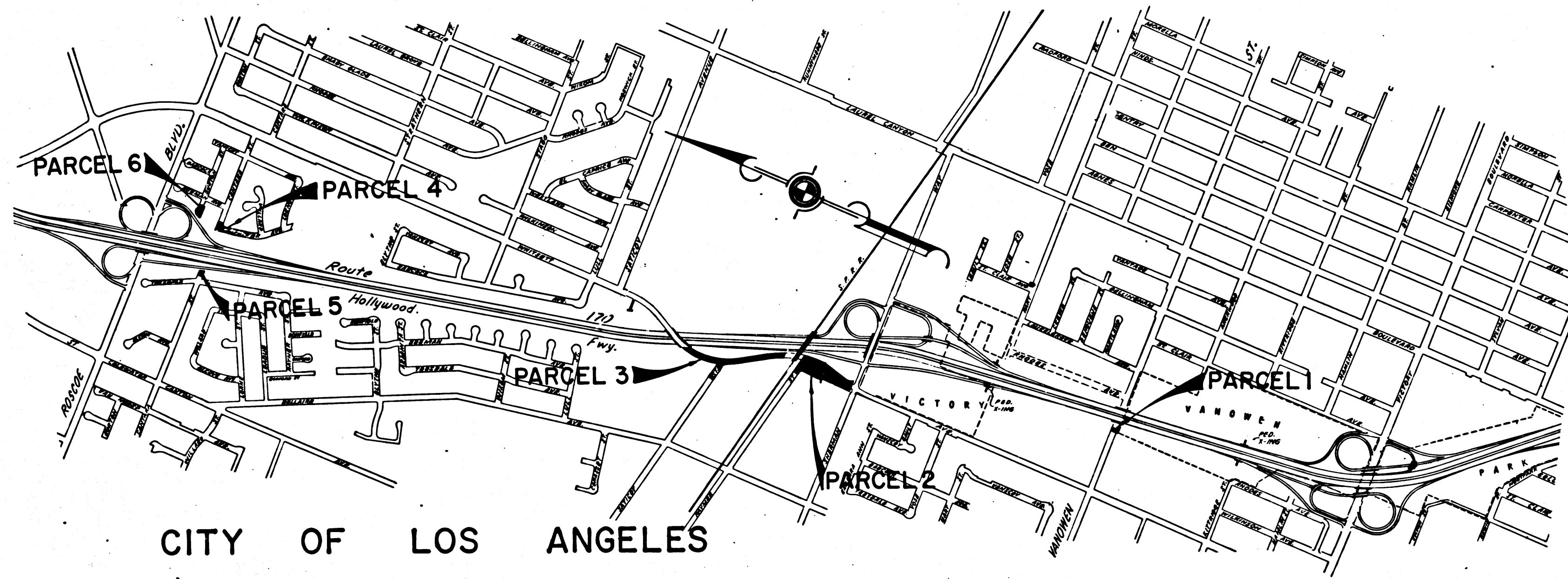
C. H. Lee
 DEPUTY DISTRICT ENGINEER
 Sept. 24, 1968
 DATE

RIGHT OF WAY MAPS OF
STATE HIGHWAY

In the City of Los Angeles on Route 170
 between Vanowen St. and Roscoe Blvd.

2701

FILED
 AT REQUEST OF
 DEPT. OF PUBLIC WORKS
 SEP. 26, 1968
 15 PAST 12 P.M.
 IN BOOK 7
 AT PAGE 27
 OF STATE HIGHWAY MAPS
 LOS ANGELES COUNTY, CALIF.
 RAY E. LEE
 COUNTY RECORDER
C. H. Lee Free
 Deputy



STATE OF CALIFORNIA
 TRANSPORTATION AGENCY
 DEPARTMENT OF PUBLIC WORKS
 DIVISION OF HIGHWAYS
PROPOSED RELINQUISHMENT

SCALE
 0 600 1200 1800 2400

DR'N BY M.A.C.	R/W MAP NO. F-1386
C'LC BY E.J.P.	F-1387
C'K'D BY M.M.	REF. MAP NO. 17A-15
REVISED	17A-16
	REL- 676

7/27-31 12/15

DIST	COUNTY	ROUTE	POST MILES	SHEET NO.	TOTAL SHEETS
07	L.A.	170	17.8/19.7	2	5

LANKERSHIM RANCH LAND and WATER CO.

M.R. 31 - 39

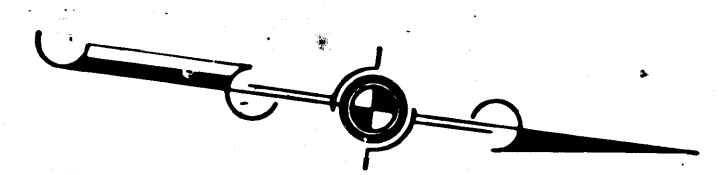
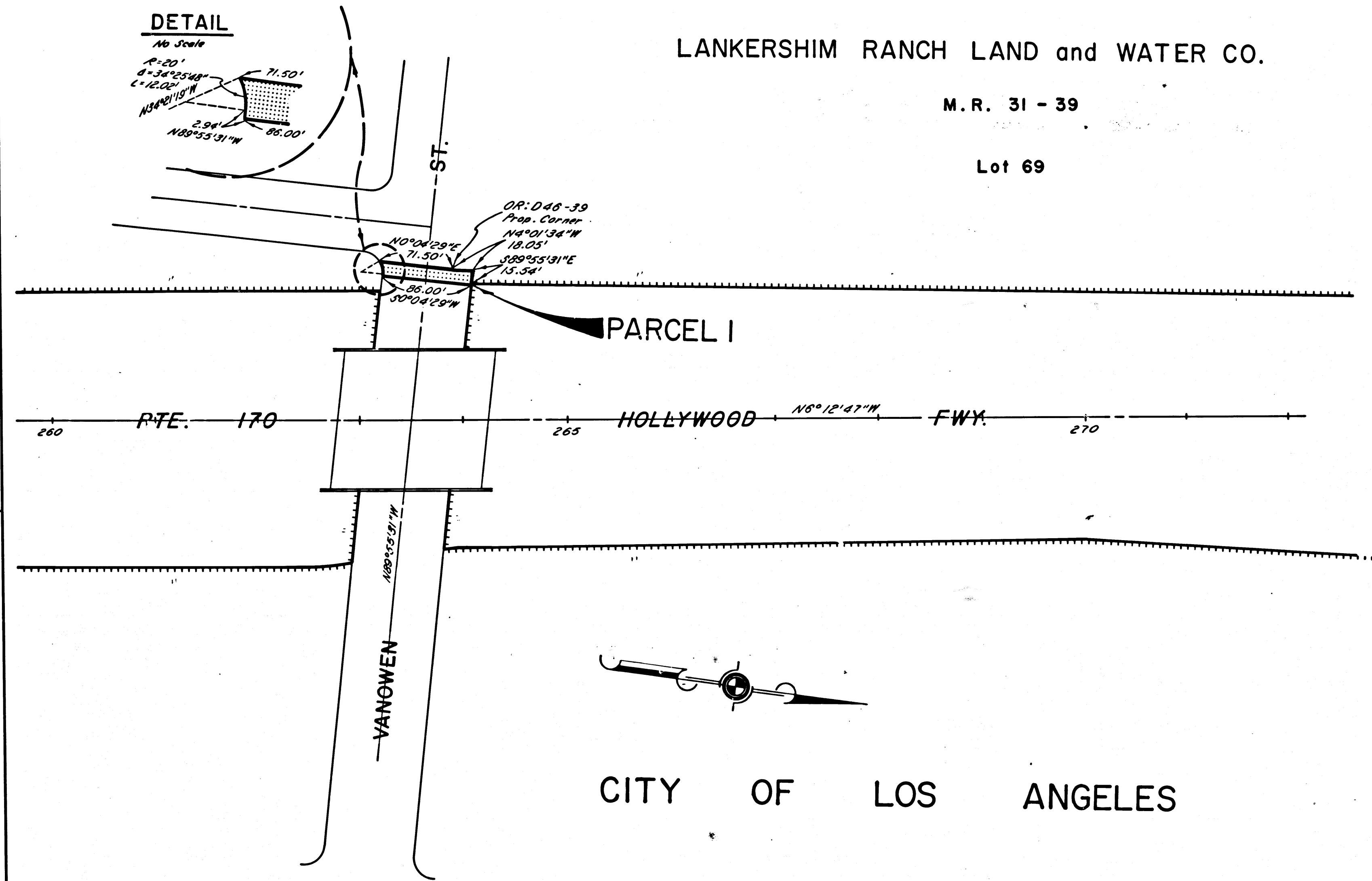
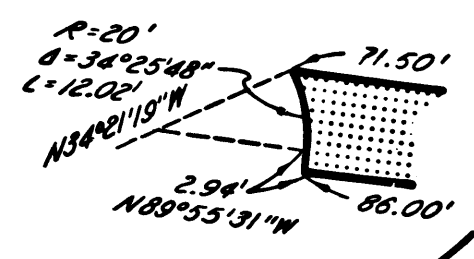
Lot 69

Anthony
 DEPUTY DISTRICT ENGINEER
 Sept. 24, 1968
 DATE

FILED WITH LOS ANGELES
 COUNTY RECORDER, RAY E. LEE
 SEP 26 1968

DETAIL

No Scale



CITY OF LOS ANGELES

STATE OF CALIFORNIA
 TRANSPORTATION AGENCY
 DEPARTMENT OF PUBLIC WORKS
 DIVISION OF HIGHWAYS

PROPOSED RELINQUISHMENT

0 50 100 150 200

AREA TO BE RELINQUISHED SHOWN THUS [Dotted Line]

ACCESS PROHIBITED [Hatched Area]

DR'N BY <i>M.A.C.</i>	R/W MAP NO. <i>F-1386</i>
C'LC BY <i>E.J.P.</i>	REF. MAP NO. <i>174-15</i>
C'K'D BY <i>M.M.</i>	REL- 676
REVISED	

DIST	COUNTY	ROUTE	POST MILES	SHEET NO.	TOTAL SHEETS
07	L.A.	170	17.8/19.7	3	5

TRACT NO. 1081

M. B. 17 - 130 / 131

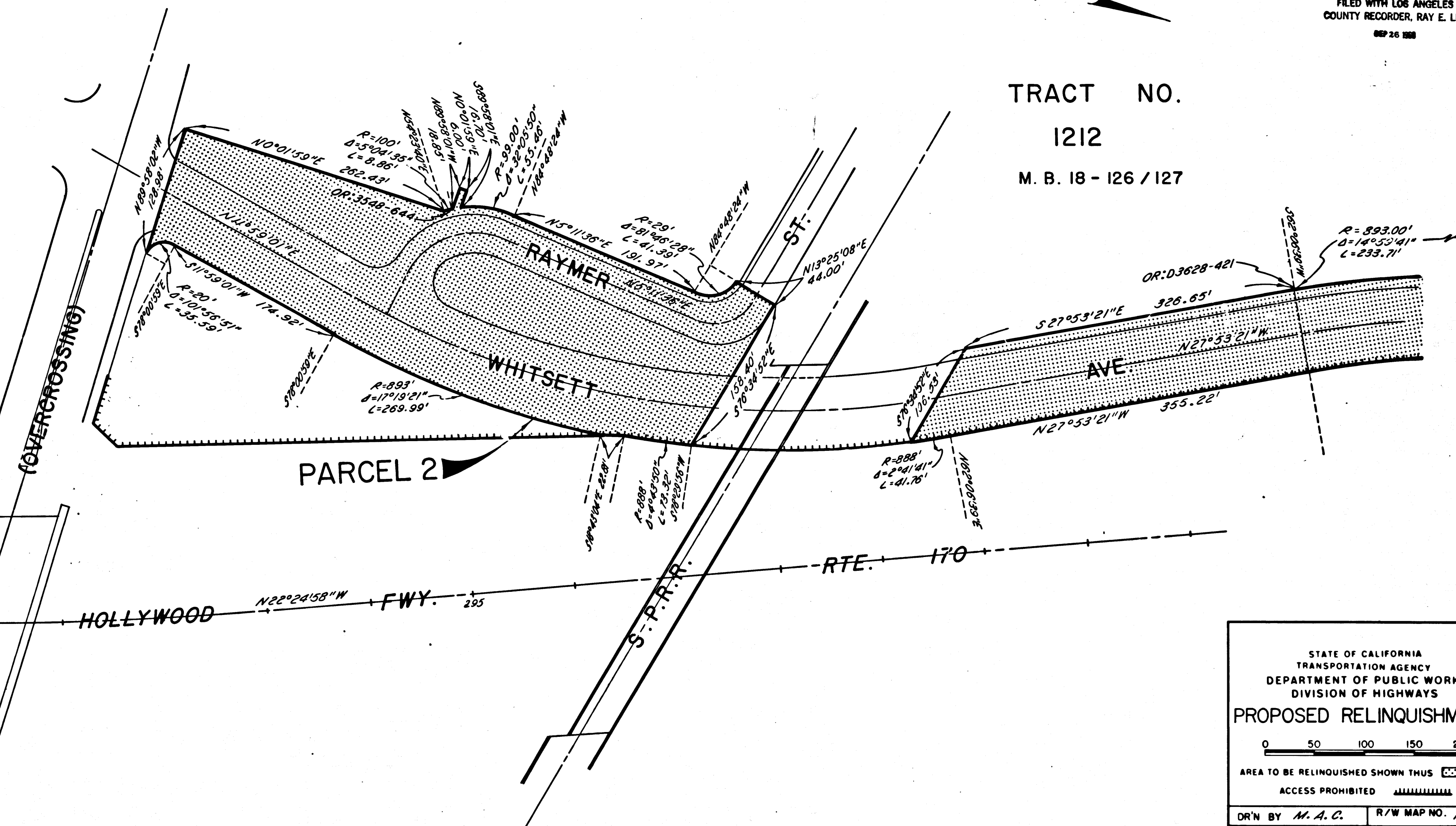
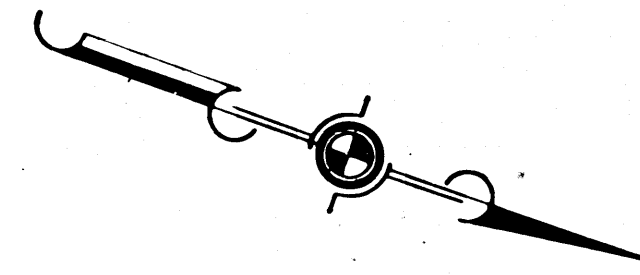
TRACT NO.

1212

M. B. 18 - 126 / 127

C. W. H. H.
DEPUTY DISTRICT ENGINEER
DATE Sept. 24, 1968

FILED WITH LOS ANGELES
COUNTY RECORDER, RAY E. LEE
SEP 26 1968



CITY OF LOS ANGELES

STATE OF CALIFORNIA
TRANSPORTATION AGENCY
DEPARTMENT OF PUBLIC WORKS
DIVISION OF HIGHWAYS

PROPOSED RELINQUISHMENT

0 50 100 150 200

AREA TO BE RELINQUISHED SHOWN THUS ACCESS PROHIBITED

DR'N BY <i>M. A. C.</i>	R/W MAP NO. <i>F-1387</i>
C'LC BY <i>E. J. P.</i>	REF. MAP NO. <i>174-18</i>
C'K'D BY <i>M. M.</i>	REL-676
REVISED	

DIST	COUNTY	ROUTE	POST MILES	SHEET NO.	TOTAL SHEETS
07	L.A.	170	17.8/18.7	4	5

Lot 112
PARCEL 3

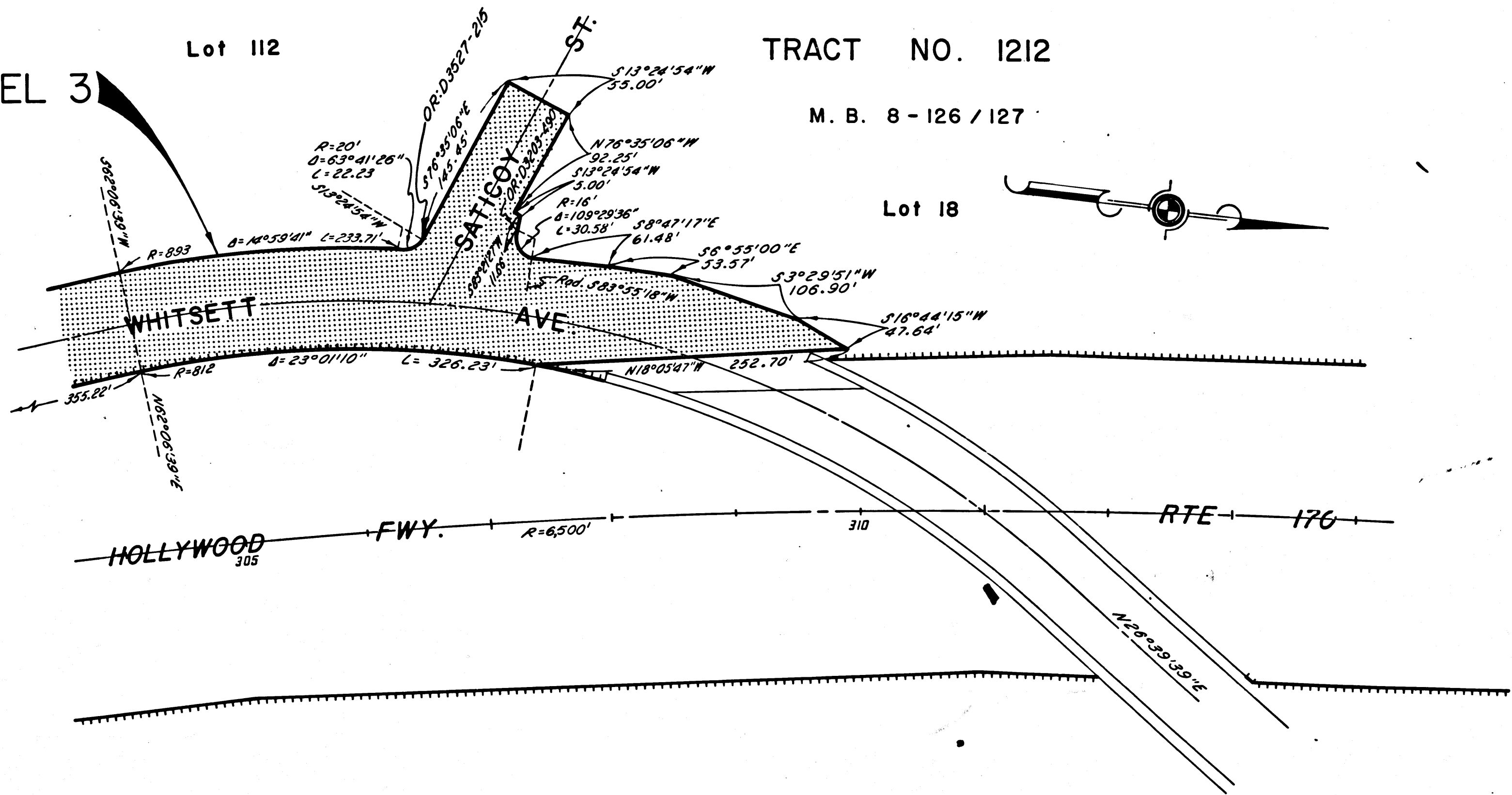
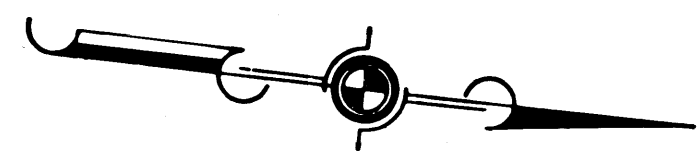
TRACT NO. 1212

M. B. 8 - 126 / 127

Lot 18

AWH
DEPUTY DISTRICT ENGINEER
Sept. 24, 1968
DATE

FILED WITH LOS ANGELES
COUNTY RECORDER, RAY E. LEE
SEP 26 1968



CITY OF LOS ANGELES

STATE OF CALIFORNIA
TRANSPORTATION AGENCY
DEPARTMENT OF PUBLIC WORKS
DIVISION OF HIGHWAYS

PROPOSED RELINQUISHMENT

0 50 100 150 200

AREA TO BE RELINQUISHED SHOWN THUS [Stippled Box]

ACCESS PROHIBITED [Hatched Box]

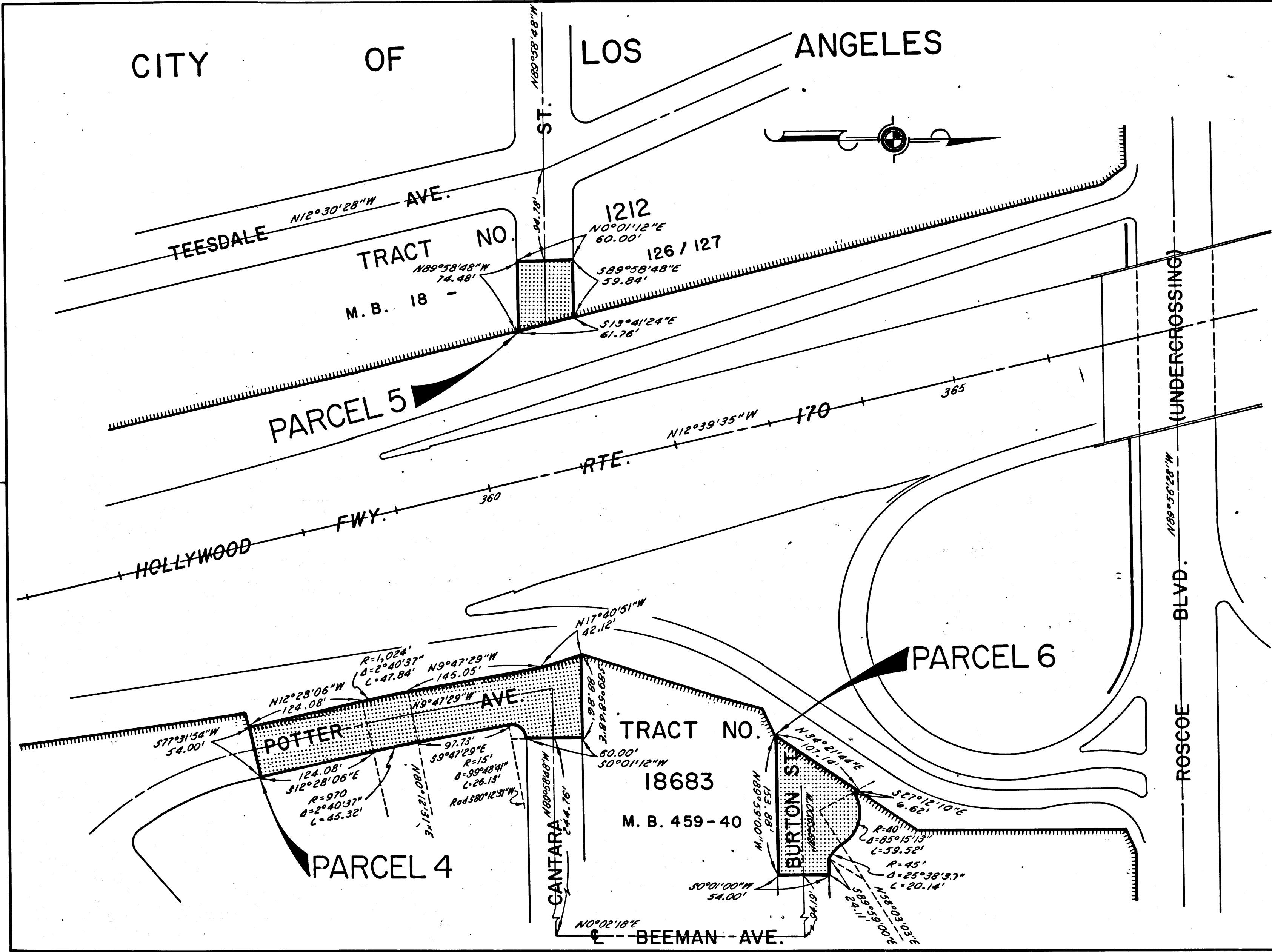
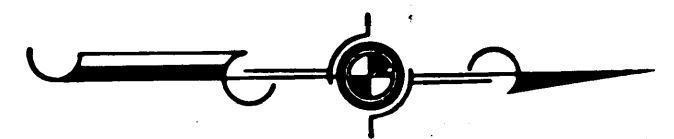
DR'N BY M. A. C.	R/W MAP NO. F-1387
C'LG BY E. J. P.	REF. MAP NO. 17A-18
C'K'D BY M. M.	REL- 676
REVISED	

DIST	COUNTY	ROUTE	POST MILES	SHEET NO.	TOTAL SHEETS
07	L.A.	170	17.8/19.7	5	5

Anthony
 DEPUTY DISTRICT ENGINEER
 Sept. 24, 1968
 DATE

FILED WITH LOS ANGELES
 COUNTY RECORDER, RAY E. LEE
 88726 888

CITY OF LOS ANGELES



STATE OF CALIFORNIA
 TRANSPORTATION AGENCY
 DEPARTMENT OF PUBLIC WORKS
 DIVISION OF HIGHWAYS

PROPOSED RELINQUISHMENT

0 50 100 150 200

AREA TO BE RELINQUISHED SHOWN THUS [Dotted Pattern]

ACCESS PROHIBITED [Hatched Pattern]

DR'N BY <i>M. A. C.</i>	R/W MAP NO. <i>F-1387</i>
C/LC BY <i>E. J. P.</i>	REF. MAP NO. <i>174-18</i>
C/K'D BY <i>M. M.</i>	REL- 676
REVISED	