

DIST	COUNTY	ROUTE	POST MILES	SHEET NO.	TOTAL SHEETS
07	L.A.	210	32.9/35.9	1	14

STATE OF CALIFORNIA
 TRANSPORTATION AGENCY
 DEPARTMENT OF PUBLIC WORKS
 DIVISION OF HIGHWAYS

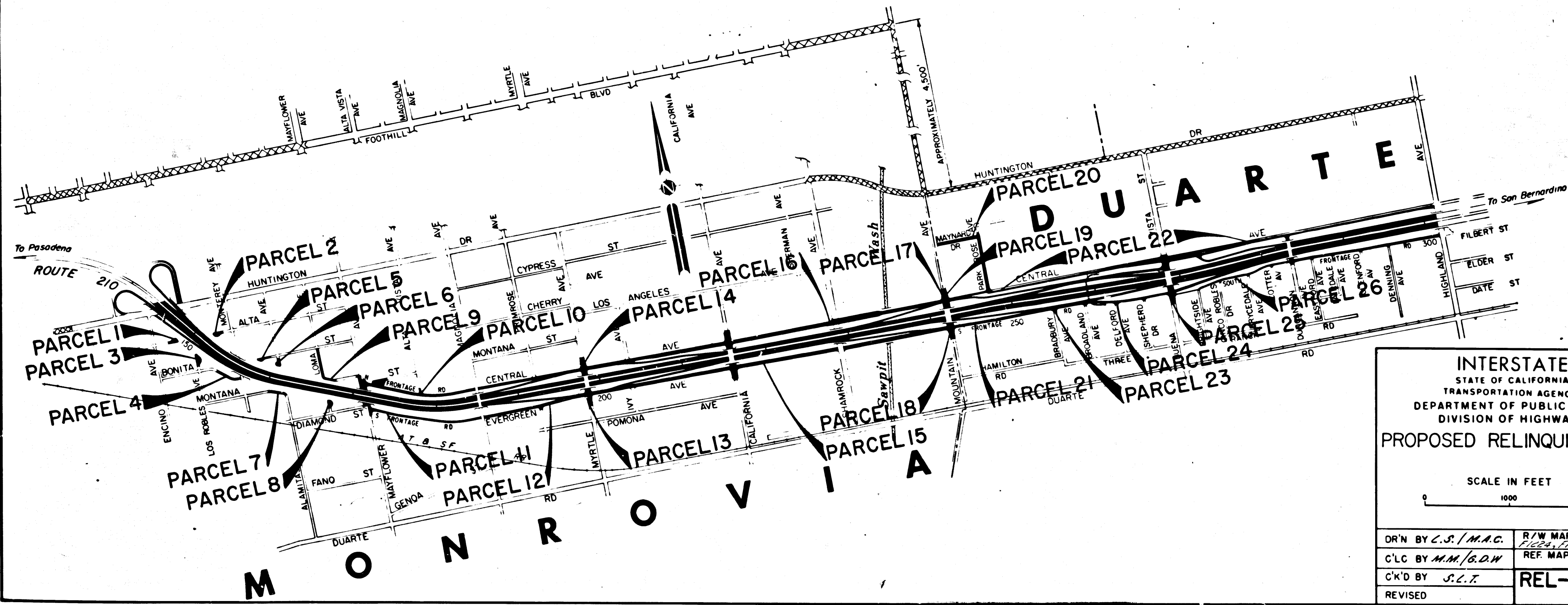
Arthur
 DEPUTY DISTRICT ENGINEER
 Sept. 30, 1968
 DATE

RIGHT OF WAY MAPS OF
 STATE HIGHWAY

1973

FILED
 AT REQUEST OF
 DEPT. OF PUBLIC WORKS
 OCT. 9, 1968
 20 MIN. PAST 10 AM
 IN BOOK 7
 AT PAGE 32
 OF STATE HIGHWAY MAPS
 LOS ANGELES COUNTY, CALIF.
 RAY F. JEE
 COUNTY RECORDER
 Deputy
 Free

In Los Angeles County in Monrovia and Duarte between
 Huntington Drive and Highland Avenue



FILED WITH LOS ANGELES
 COUNTY RECORDER, RAY F. JEE
 OCT 9 1968

INTERSTATE
 STATE OF CALIFORNIA
 TRANSPORTATION AGENCY
 DEPARTMENT OF PUBLIC WORKS
 DIVISION OF HIGHWAYS
 PROPOSED RELINQUISHMENT

SCALE IN FEET
 0 1000 2000

DR'N BY C.S./M.A.C.	R/W MAP NO. F1222, F1223, F1224, F1225, F1226, F1227
C'L.C. BY M.M./G.D.W.	REF. MAP NO. 175-6
C'K'D BY S.C.T.	REL-668
REVISED	669

BOOK 7 PAGE 32

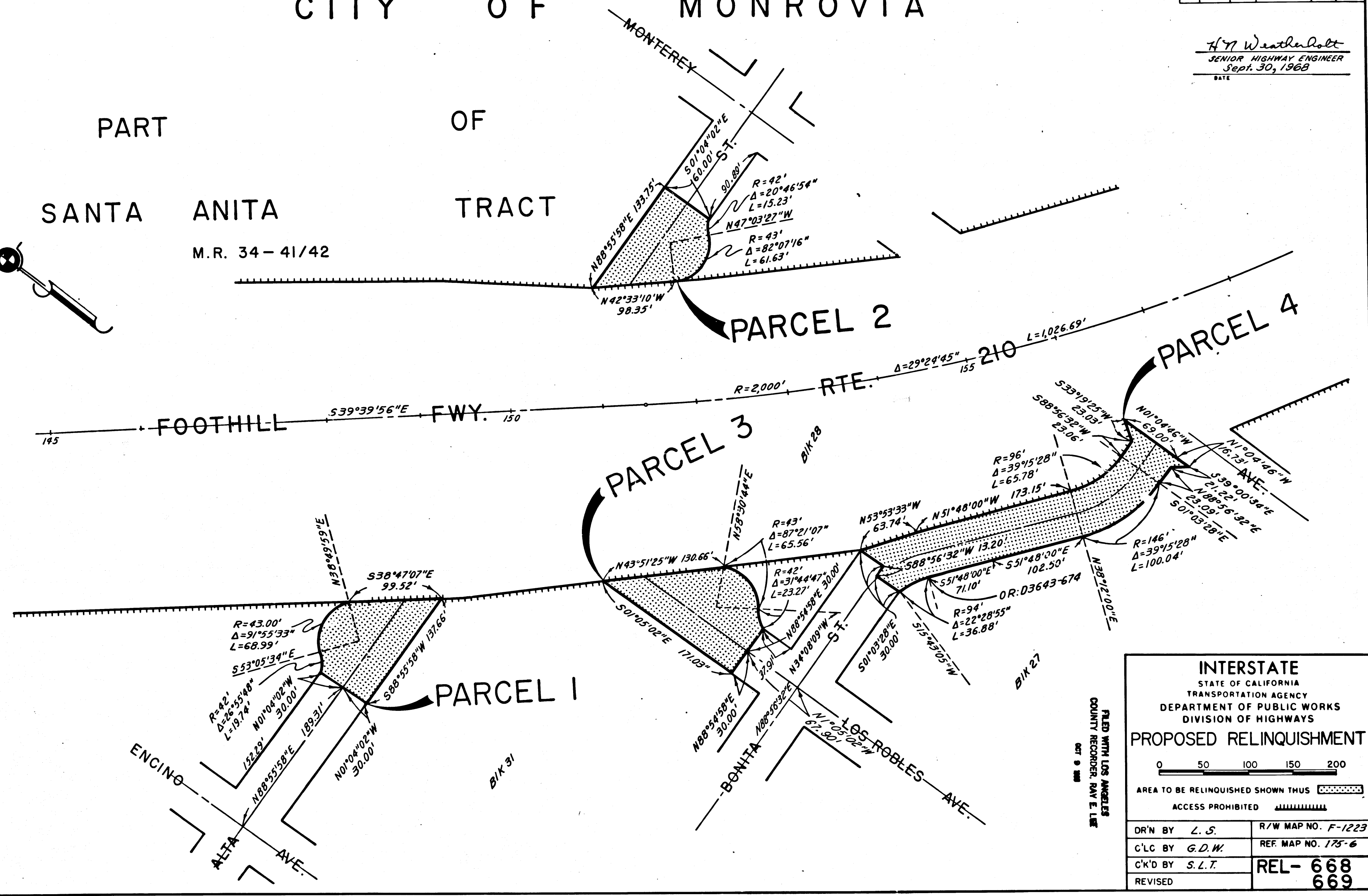
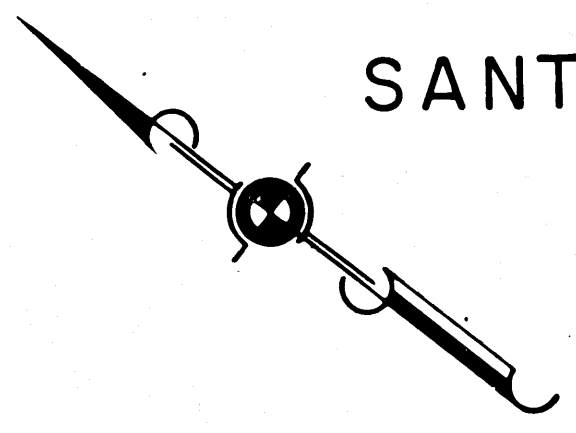
COUNTY ENGINEER'S COPY

DIST	COUNTY	ROUTE	POST MILES	SHEET NO.	TOTAL SHEETS
07	LA	210	32.9/35.9	2	14

H. Weatherholt
 SENIOR HIGHWAY ENGINEER
 Sept. 30, 1968
 DATE

CITY OF MONROVIA

PART OF TRACT
 SANTA ANITA
 M.R. 34-41/42



INTERSTATE
 STATE OF CALIFORNIA
 TRANSPORTATION AGENCY
 DEPARTMENT OF PUBLIC WORKS
 DIVISION OF HIGHWAYS

PROPOSED RELINQUISHMENT

0 50 100 150 200

AREA TO BE RELINQUISHED SHOWN THUS

ACCESS PROHIBITED

DR'N BY <i>L. S.</i>	R/W MAP NO. <i>F-1223</i>
C'LC BY <i>G. D. W.</i>	REF. MAP NO. <i>175-6</i>
C'KD BY <i>S. L. T.</i>	REL- 668
REVISED	669

FILED WITH LOS ANGELES COUNTY RECORDER, NAV E. LIB. OCT 9 1968

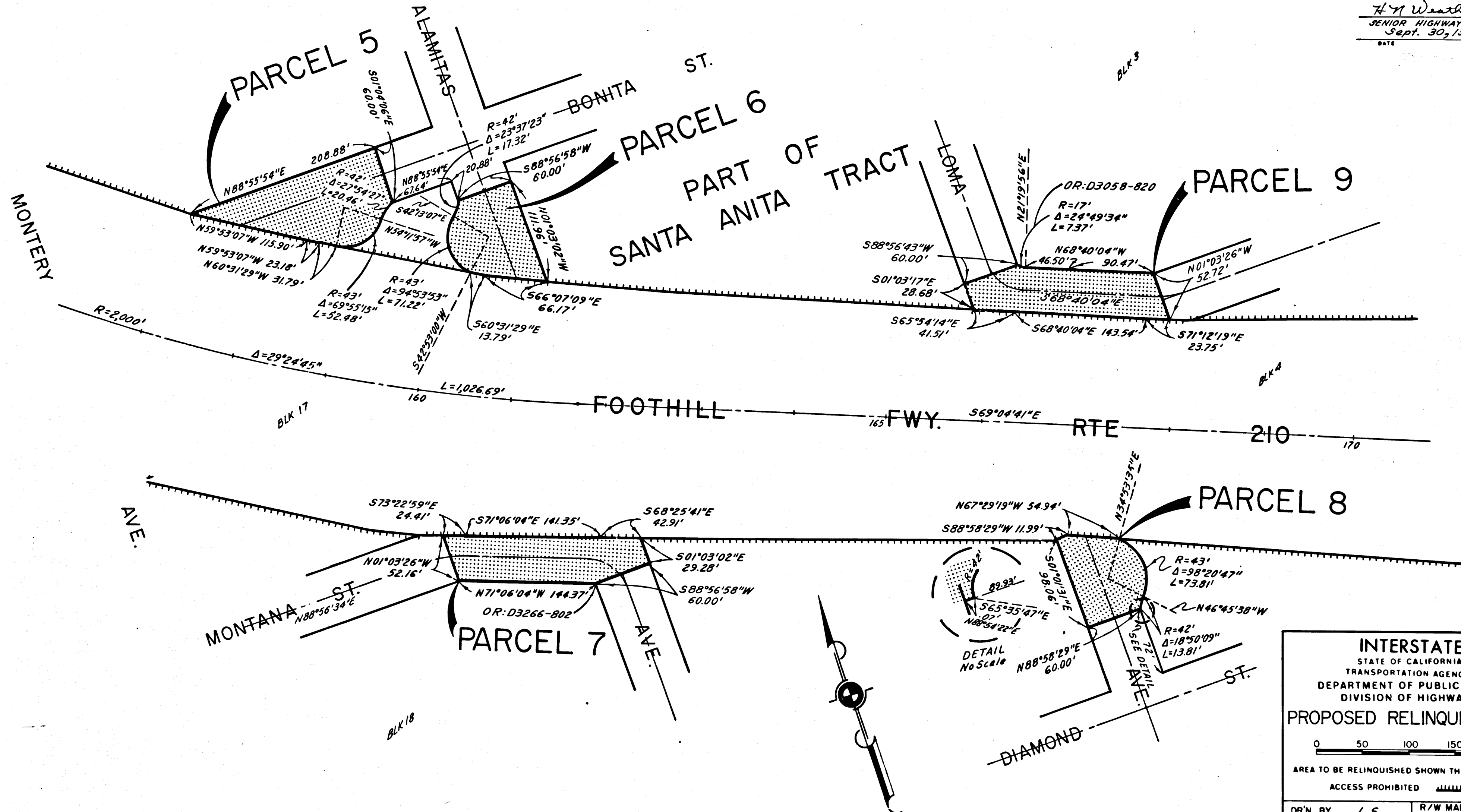
COUNTY ENGINEER'S COPY

BOOK 7 PAGE 33

DIST	COUNTY	ROUTE	POST MILES	SHEET NO.	TOTAL SHEETS
07	LA	210	329/35.9	3	14

CITY OF MONROVIA

H. Weatherholt
 SENIOR HIGHWAY ENGINEER
 Sept. 30, 1968
 DATE



FILED WITH LOS ANGELES
 COUNTY RECORDER, RAY E. LEE
 OCT 9 1968

INTERSTATE
 STATE OF CALIFORNIA
 TRANSPORTATION AGENCY
 DEPARTMENT OF PUBLIC WORKS
 DIVISION OF HIGHWAYS

PROPOSED RELINQUISHMENT

0 50 100 150 200

AREA TO BE RELINQUISHED SHOWN THUS

ACCESS PROHIBITED

DR'N BY	L.S.	R/W MAP NO.	F-1223
C'LC BY	G.D.W.	REF. MAP NO.	175-6
C'K'D BY	S.L.T.	REL-	668
REVISED			669

COUNTY ENGINEER'S COPY

BOOK 7 PAGE 34

DIST	COUNTY	ROUTE	POST MILES	SHEET NO.	TOTAL SHEETS
07	L.A.	210	32.9/35.9	4	14

H. J. Weatherholt
 SENIOR HIGHWAY ENGINEER
 Sept. 30, 1968
 DATE

TRACT NO. 15567
 M.B. 387-47/48

MONROVIA TRACT

Blk 12

M. R. 9-73/74

Lot K

CITY OF MONROVIA

INTERSTATE
 STATE OF CALIFORNIA
 TRANSPORTATION AGENCY
 DEPARTMENT OF PUBLIC WORKS
 DIVISION OF HIGHWAYS

PROPOSED RELINQUISHMENT

0 50 100 150 200

AREA TO BE RELINQUISHED SHOWN THUS [Dotted Pattern]

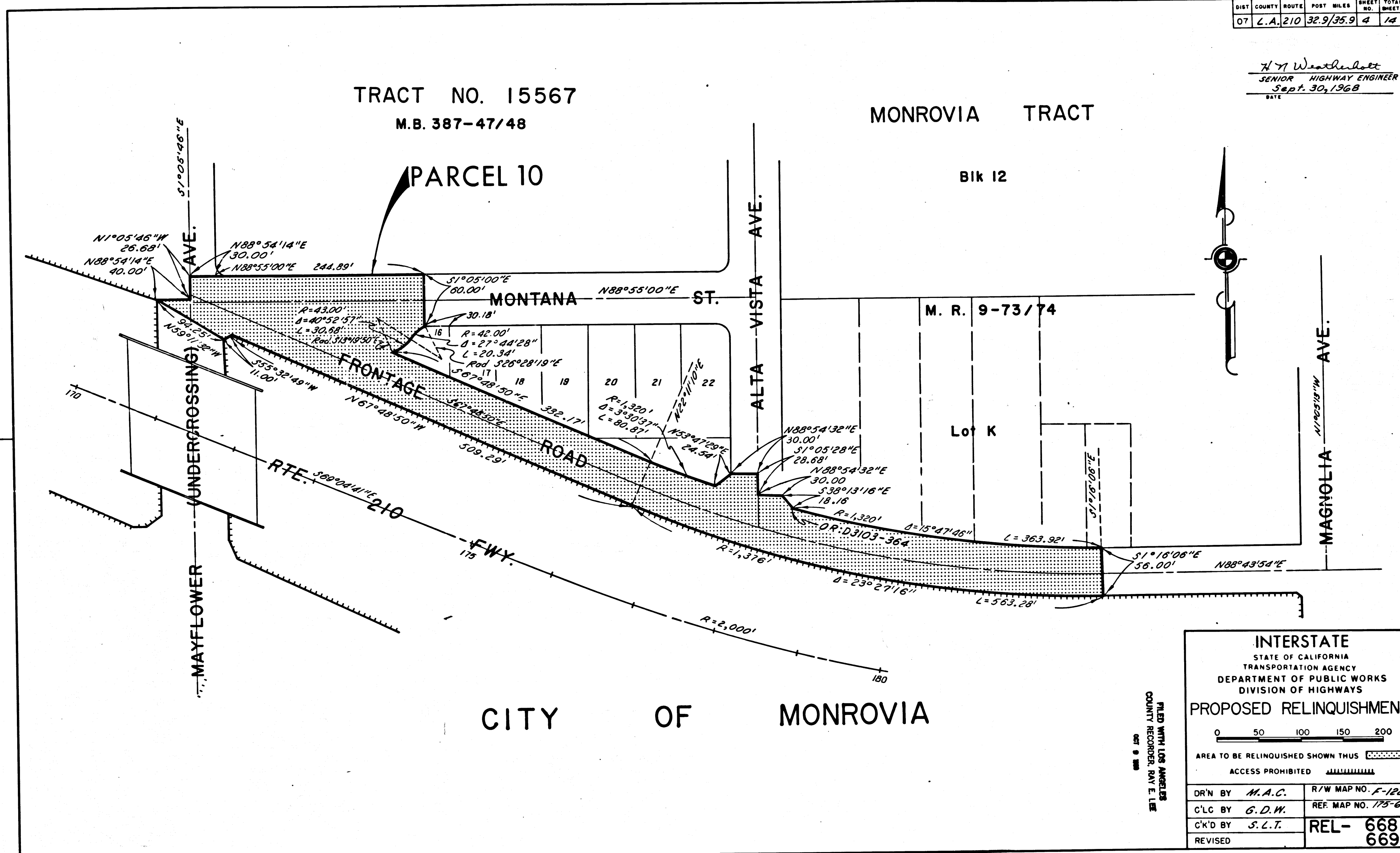
ACCESS PROHIBITED [Hatched Pattern]

DR'N BY	M.A.C.	R/W MAP NO.	F-1224
C'LC BY	G.D.W.	REF. MAP NO.	175-6
C'K'D BY	S.L.T.	REL-	668
REVISED			669

FILED WITH LOS ANGELES
 COUNTY RECORDER, RAY E. LEE
 OCT 9 1968

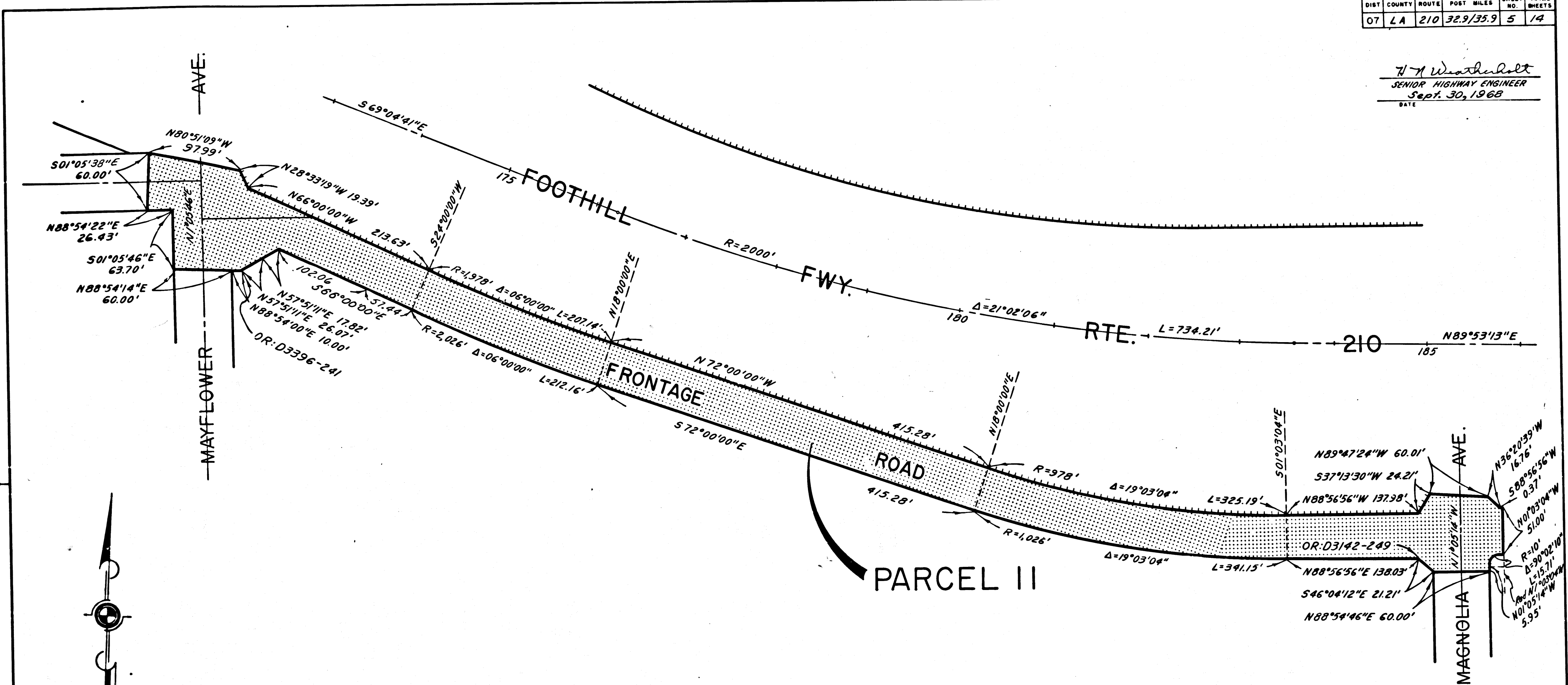
BOOK 7 PAGE 35

COUNTY ENGINEER'S COPY



DIST	COUNTY	ROUTE	POST MILES	SHEET NO.	TOTAL SHEETS
07	LA	210	32.9/35.9	5	14

H. A. Weatherholt
 SENIOR HIGHWAY ENGINEER
 Sept. 30, 1968
 DATE



MONROVIA TRACT

M.R. 9-73/74

BLK. 15

CITY OF MONROVIA

INTERSTATE
 STATE OF CALIFORNIA
 TRANSPORTATION AGENCY
 DEPARTMENT OF PUBLIC WORKS
 DIVISION OF HIGHWAYS

PROPOSED RELINQUISHMENT

0 50 100 150 200

AREA TO BE RELINQUISHED SHOWN THUS [Stippled Box]

ACCESS PROHIBITED [Wavy Line]

DR'N BY L. S.	R/W MAP NO. F-1224
C'LC BY G. D. W.	REF MAP NO. 175-6
C'K'D BY S. L. T.	REL- 668
REVISED	669

FILED WITH LOS ANGELES
 COUNTY RECORDER, RAY E. LEE
 OCT 9 1968

BOOK 7 PAGE 36

COUNTY ENGINEER'S COPY

DIST	COUNTY	ROUTE	POST MILES	SHEET NO.	TOTAL SHEETS
OT	LA	210	32.9/35.9	6	14

CITY OF MONROVIA

H. W. Weatherholt
 SENIOR HIGHWAY ENGINEER
 Sept. 30, 1968
 DATE

TRACT NO. 15031
 M.B. 322- 25/26

PARCEL 14

190 Foothill FWY. RTE. 210 200

PARCEL 13

TRACT NO. 15646
 M.B. 351- 23/24

PARCEL 12

BLOCK F
 M.R. 43-86, M.R. 52-19

INTERSTATE
 STATE OF CALIFORNIA
 TRANSPORTATION AGENCY
 DEPARTMENT OF PUBLIC WORKS
 DIVISION OF HIGHWAYS

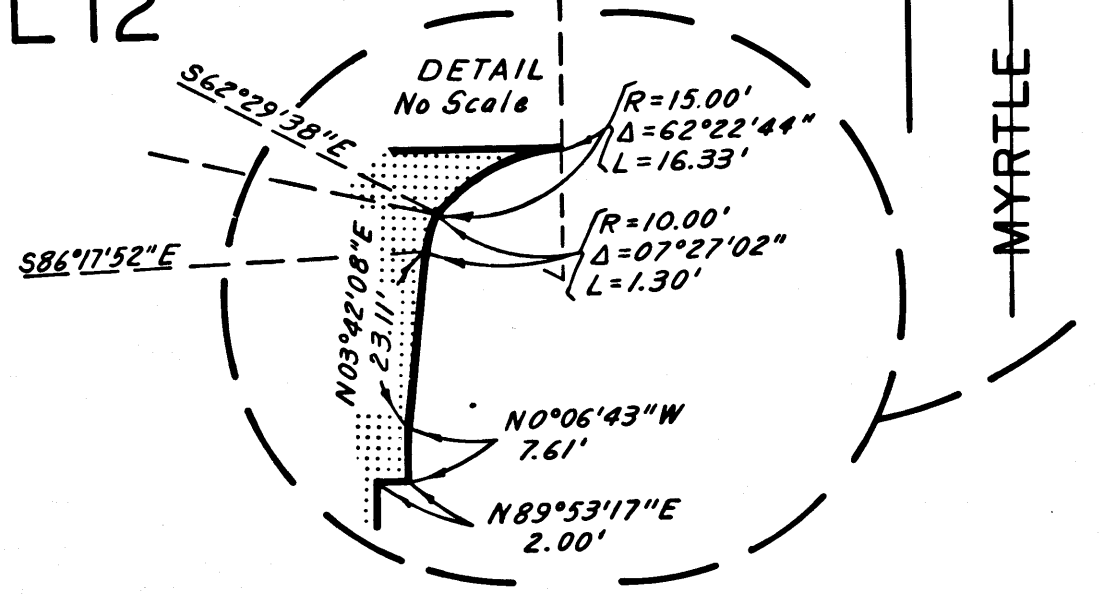
PROPOSED RELINQUISHMENT

0 50 100 150 200

AREA TO BE RELINQUISHED SHOWN THUS [Stippled Area]

ACCESS PROHIBITED [Hatched Area]

DR'N BY	L. S.	R/W MAP NO.	F-1224
C/LG BY	G.D.W.	REF MAP NO.	175-6
C/K'D BY	S.L.T.	REL-	668 669
REVISED			



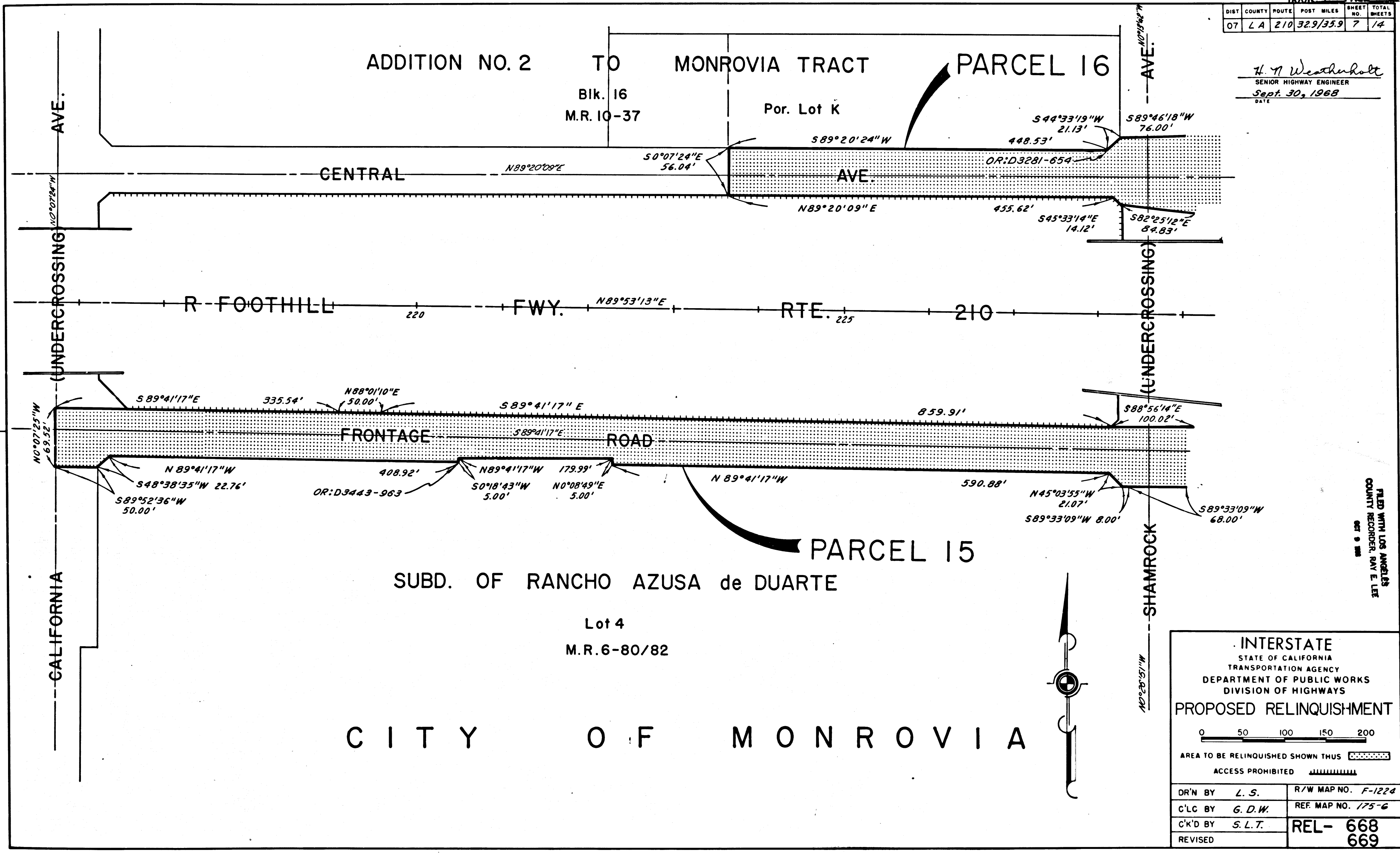
COUNTY ENGINEER'S COPY

FILED WITH LOS ANGELES
 COUNTY RECORDER RAY E. LEE
 OCT 9 1968

BOOK 7
 PAGE 37

DIST	COUNTY	ROUTE	POST MILES	SHEET NO.	TOTAL SHEETS
07	LA	210	329/359	7	14

H. H. Weatherholt
SENIOR HIGHWAY ENGINEER
Sept. 30, 1968
DATE



FILED WITH LOS ANGELES COUNTY RECORDER, RAY E. LEE OCT 9 1968

INTERSTATE STATE OF CALIFORNIA TRANSPORTATION AGENCY DEPARTMENT OF PUBLIC WORKS DIVISION OF HIGHWAYS PROPOSED RELINQUISHMENT	
0 50 100 150 200 AREA TO BE RELINQUISHED SHOWN THUS	
ACCESS PROHIBITED	
DR'N BY L. S.	R/W MAP NO. F-1224
C'LC BY G. D. W.	REF. MAP NO. 175-6
C'K'D BY S. L. T.	REL- 668
REVISED	669

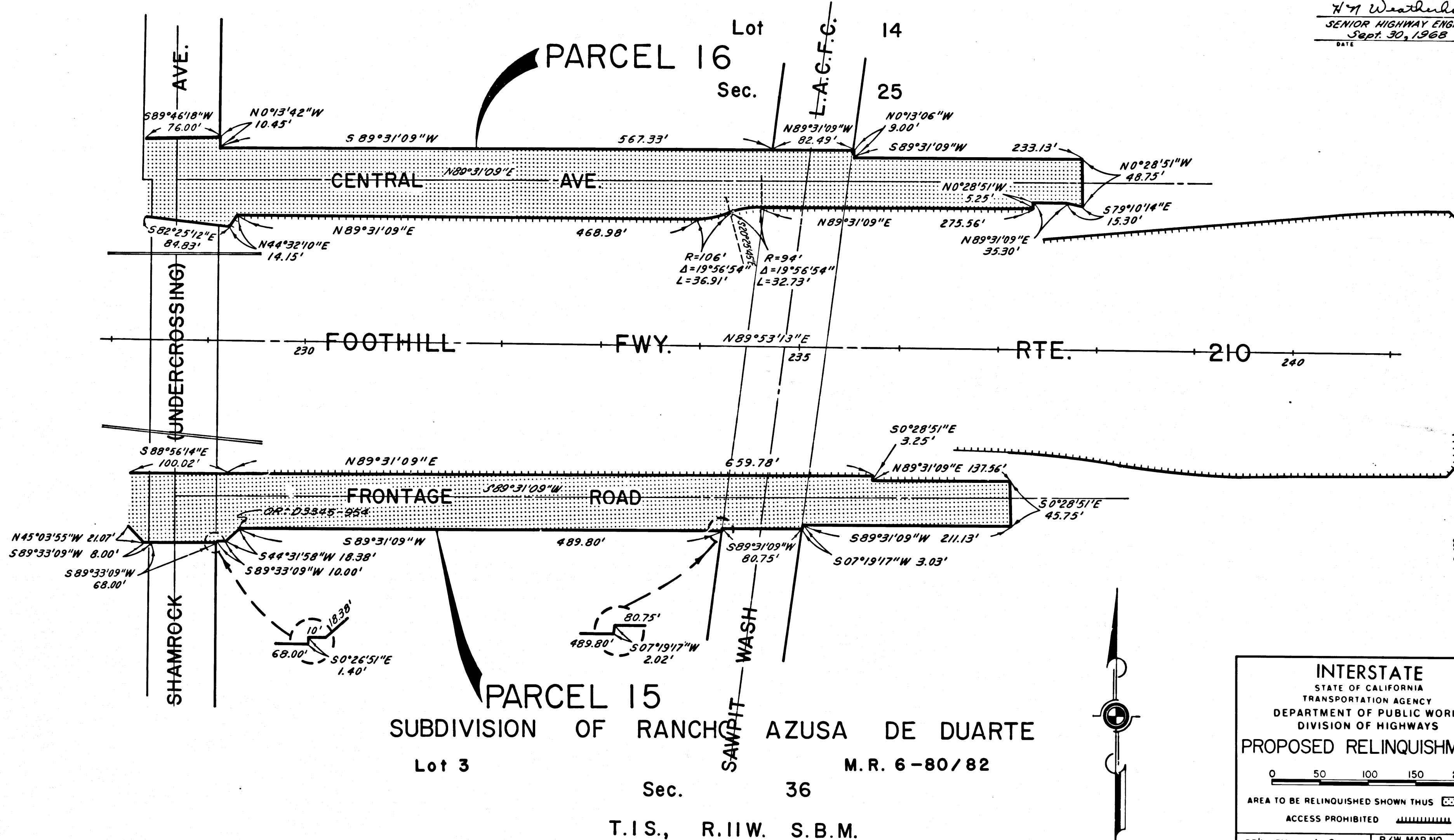
BOOK 7 PAGE 38

COUNTY ENGINEER'S COPY

DIST.	COUNTY	ROUTE	POST MILES	SHEET NO.	TOTAL SHEETS
07	LA	210	32.9/35.9	8	14

CITY OF MONROVIA

H. Weatherholt
 SENIOR HIGHWAY ENGINEER
 Sept. 30, 1968
 DATE



FILED WITH LOS ANGELES COUNTY RECORDER, RAY E. LEE OCT 9 1968

INTERSTATE
 STATE OF CALIFORNIA
 TRANSPORTATION AGENCY
 DEPARTMENT OF PUBLIC WORKS
 DIVISION OF HIGHWAYS

PROPOSED RELINQUISHMENT

0 50 100 150 200

AREA TO BE RELINQUISHED SHOWN THUS [stippled pattern]

ACCESS PROHIBITED [hatched pattern]

DR'N BY L. S.	R/W MAP NO. F-1225
C'LC BY G. D. W.	REF. MAP NO. 175-6
C'K'D BY S. L. T.	REL- 668
REVISED	669

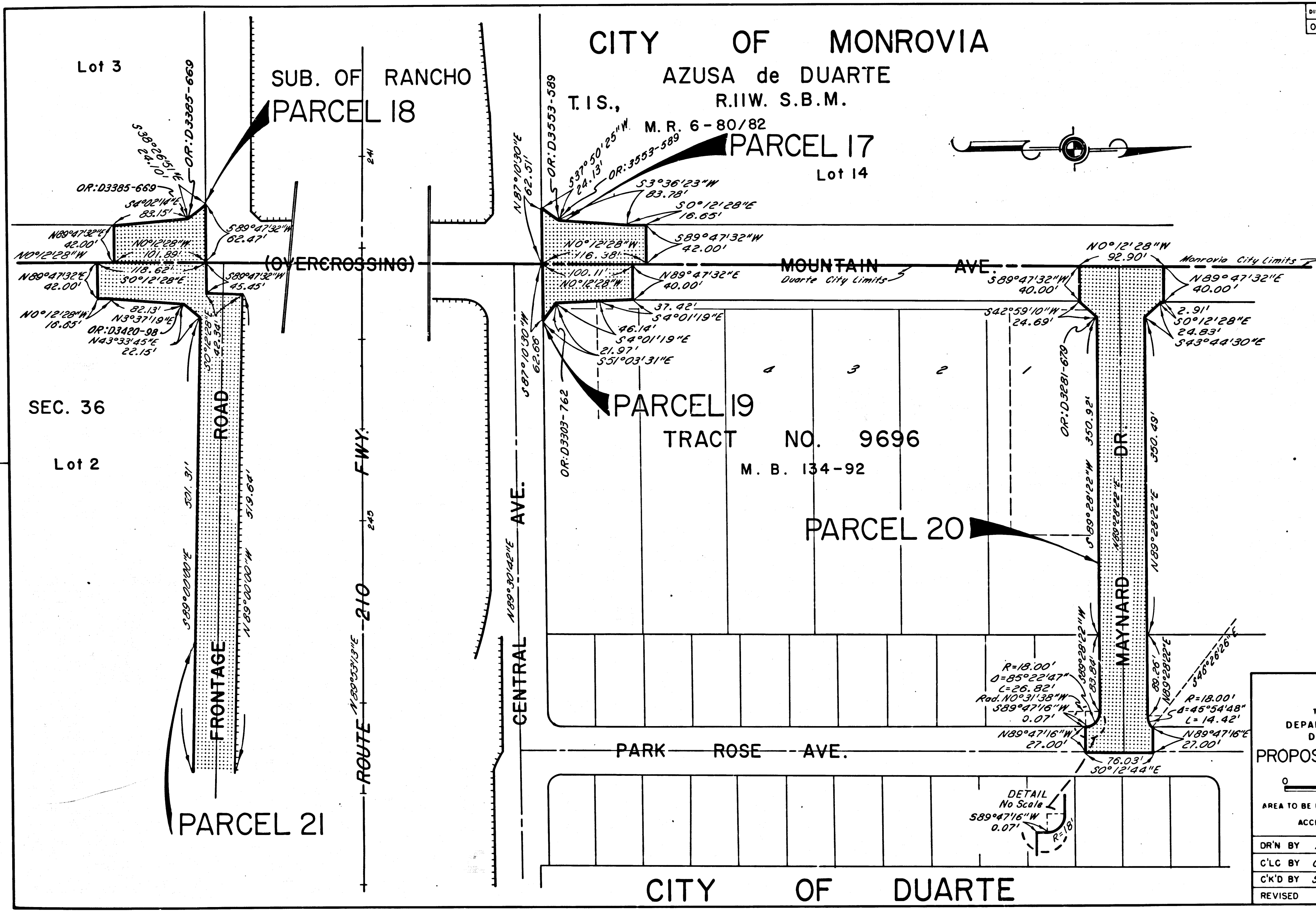
PARCEL 15
 SUBDIVISION OF RANCHO AZUSA DE DUARTE
 Lot 3 Sec. 36 M. R. 6-80/82
 T. I. S., R. I. I. W. S. B. M.

COUNTY ENGINEER'S COPY

BOOK 7 PAGE 39

DIST	COUNTY	ROUTE	POST MILES	SHEET NO.	TOTAL SHEETS
07	LA	210	32.9/35.9	9	14

H. W. Weatherholt
 SENIOR HIGHWAY ENGINEER
 Sept. 30, 1968
 DATE



ALSO WITH LOS ANGELES COUNTY RECORDER, RAY E. LEE OCT 9 1968

INTERSTATE
 STATE OF CALIFORNIA
 TRANSPORTATION AGENCY
 DEPARTMENT OF PUBLIC WORKS
 DIVISION OF HIGHWAYS

PROPOSED RELINQUISHMENT

0 50 100 150 200

AREA TO BE RELINQUISHED SHOWN THUS [Pattern]

ACCESS PROHIBITED [Pattern]

DR'N BY	M.A.C.	R/W MAP NO.	F-1226
C'LC BY	G.D.W.	REF. MAP NO.	175-6
C'K'D BY	S.L.T.	REL-	668
REVISED			669

BOOK 7 PAGE 40

COUNTY ENGINEER'S COPY

DIST	COUNTY	ROUTE	POST MILES	SHEET NO.	TOTAL SHEETS
07	LA	210	32.9/35.9	10	14

H. W. Weatherholt
 SENIOR HIGHWAY ENGINEER
 DATE Sept. 30, 1968

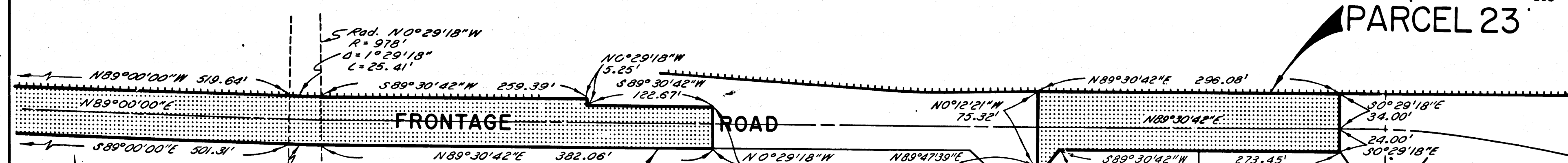
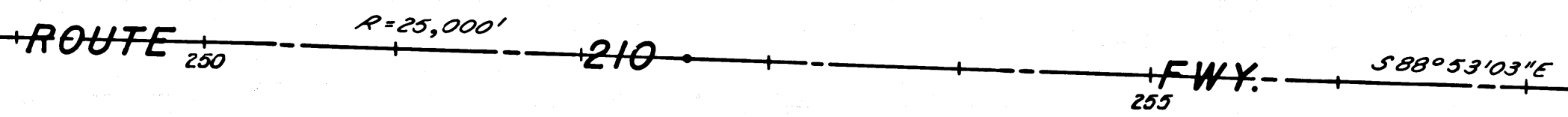
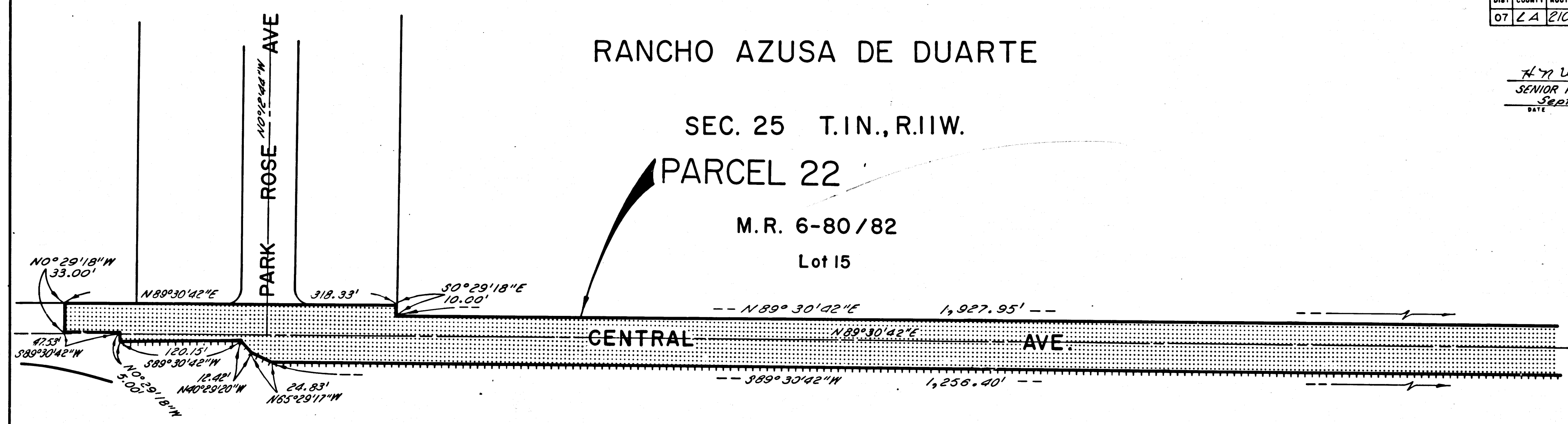
RANCHO AZUSA DE DUARTE

SEC. 25 T.1N., R.11W.

PARCEL 22

M.R. 6-80/82

Lot 15



PARCEL 21

PARCEL 23

CITY OF DUARTE

TRACT NO. 13041

M. B. 328-25/26

INTERSTATE
 STATE OF CALIFORNIA
 TRANSPORTATION AGENCY
 DEPARTMENT OF PUBLIC WORKS
 DIVISION OF HIGHWAYS
 PROPOSED RELINQUISHMENT



AREA TO BE RELINQUISHED SHOWN THUS [stippled pattern]
 ACCESS PROHIBITED [hatched pattern]

DR'N BY	M.A.C.	R/W MAP NO.	F-1226
C'LG BY	G.D.W.	REF. MAP NO.	175-6
C'K'D BY	S.L.T.	REL-	668
REVISED			669

COUNTY ENGINEER'S COPY

FILED WITH LOS ANGELES
 COUNTY RECORDER, RAY E. LEE
 OCT 9 1968

BOOK 7 PAGE 41

DIST	COUNTY	ROUTE	POST MILES	SHEET NO.	TOTAL SHEETS
07	L.A.	210	32.9/35.9	11	14

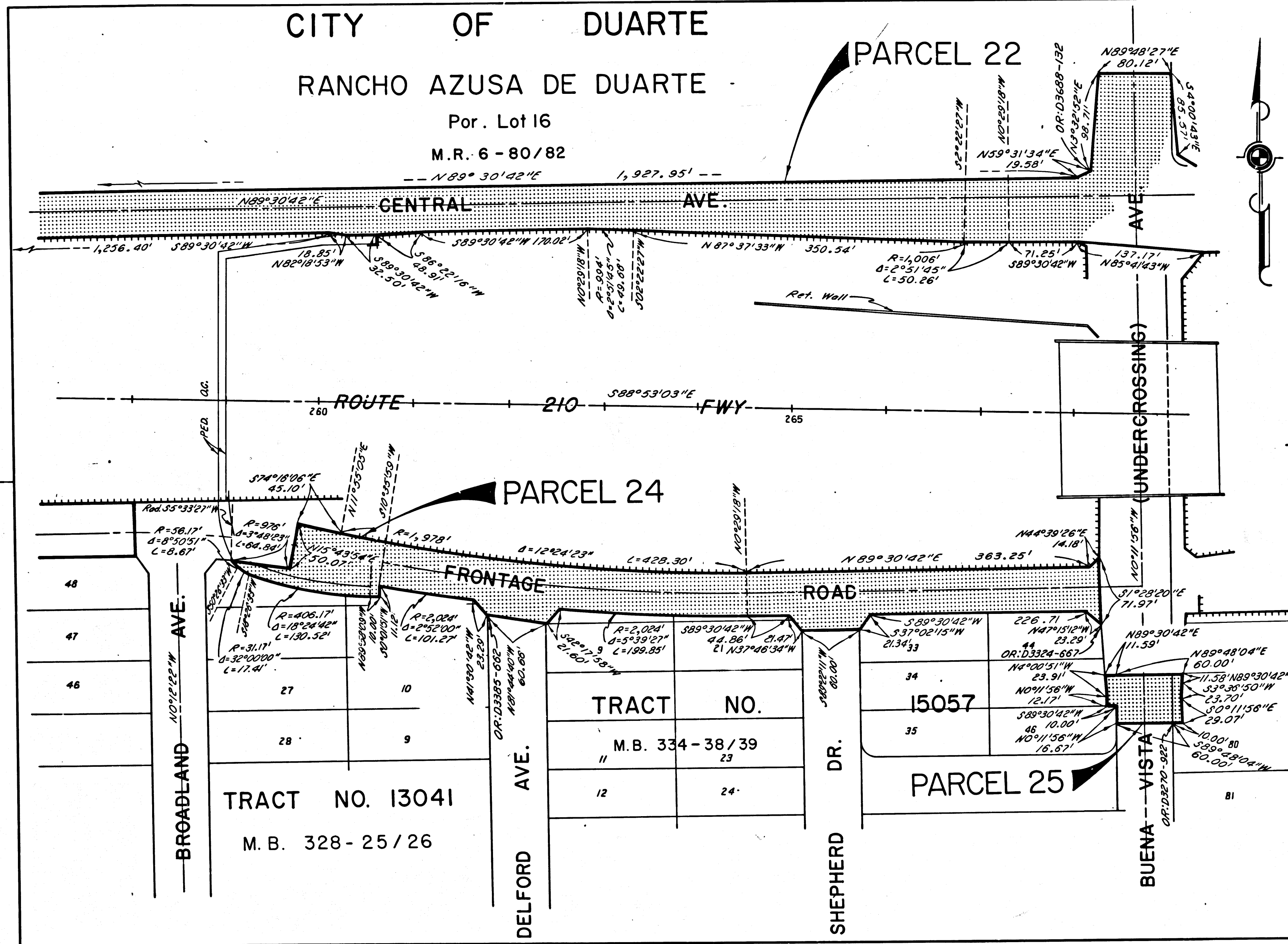
CITY OF DUARTE

RANCHO AZUSA DE DUARTE

Por. Lot 16

M.R. 6 - 80/82

H. A. Weatherholt
SENIOR HIGHWAY ENGINEER,
Sept. 30, 1968
DATE



FILED WITH LOS ANGELES
COUNTY RECORDER, RAY E. LISK
OCT 9 1968

INTERSTATE
STATE OF CALIFORNIA
TRANSPORTATION AGENCY
DEPARTMENT OF PUBLIC WORKS
DIVISION OF HIGHWAYS

PROPOSED RELINQUISHMENT

0 50 100 150 200

AREA TO BE RELINQUISHED SHOWN THUS

ACCESS PROHIBITED

DR'N BY	M.A.C.	R/W MAP NO.	F-1226
C'LC BY	G.D.W.	REF. MAP NO.	175-6
C'K'D BY	S.L.T.	REL-	668
REVISED			669

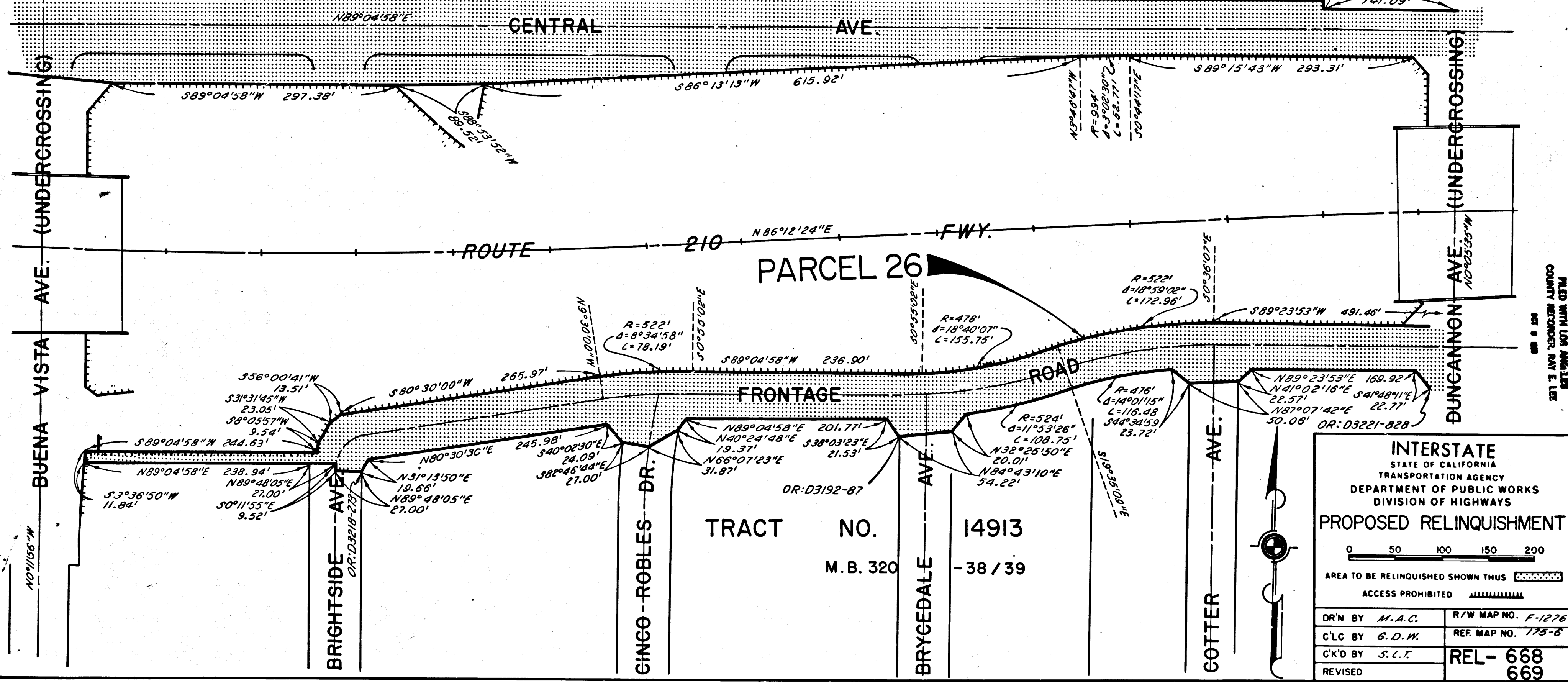
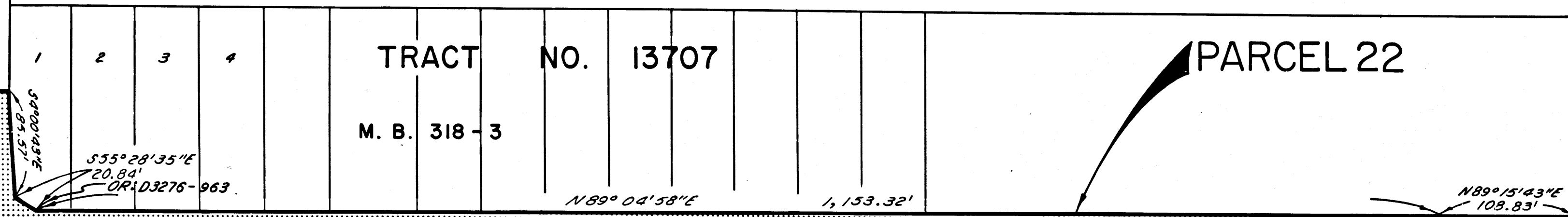
COUNTY ENGINEER'S COPY

BOOK 7 PAGE 42

DIST	COUNTY	ROUTE	POST MILES	SHEET NO.	TOTAL SHEETS
07	L.A.	210	32.935.9	12	14

CITY OF DUARTE

H. W. Weatherholt
 SENIOR HIGHWAY ENGINEER
 Sept. 30, 1968
 DATE



INTERSTATE
 STATE OF CALIFORNIA
 TRANSPORTATION AGENCY
 DEPARTMENT OF PUBLIC WORKS
 DIVISION OF HIGHWAYS

PROPOSED RELINQUISHMENT

0 50 100 150 200

AREA TO BE RELINQUISHED SHOWN THUS [Pattern]

ACCESS PROHIBITED [Pattern]

DR'N BY M.A.C.	R/W MAP NO. F-1226
C'LG BY G.D.W.	REF. MAP NO. 175-6
C'K'D BY S.C.T.	REL- 668
REVISED	669

COUNTY ENGINEER'S COPY

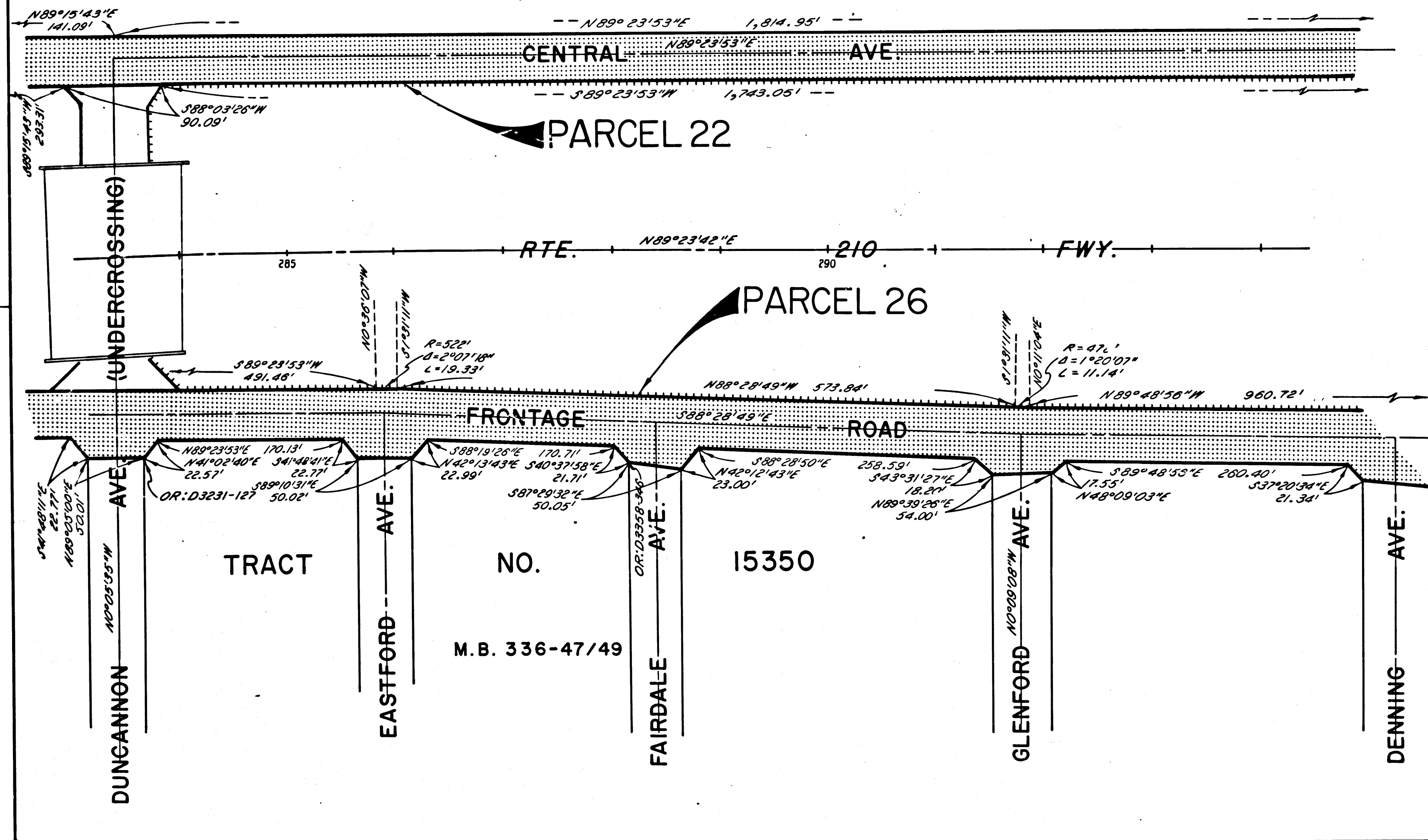
FILED WITH LOS ANGELES COUNTY RECORDER, DAY E. LEE OCT 9 1968

BOOK 7 PAGE 43

DIST	COUNTY	ROUTE	POST MILES	SHEET NO.	TOTAL SHEETS
07	L.A.	210	32.9/35.9	13	14

CITY OF DUARTE

H. W. Weatherholt
 SENIOR HIGHWAY ENGINEER
 Sept. 30, 1968
 DATE



FILED WITH LOS ANGELES COUNTY RECORDER, MAY 1, 1968

INTERSTATE
 STATE OF CALIFORNIA
 TRANSPORTATION AGENCY
 DEPARTMENT OF PUBLIC WORKS
 DIVISION OF HIGHWAYS

PROPOSED RELINQUISHMENT

0 50 100 150 200

AREA TO BE RELINQUISHED SHOWN THUS [stippled pattern]

ACCESS PROHIBITED [hatched pattern]

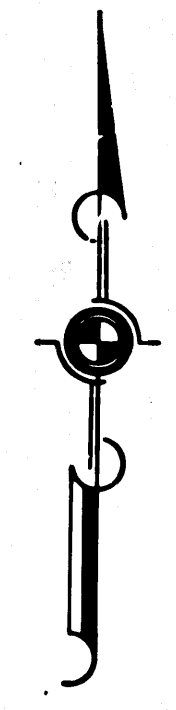
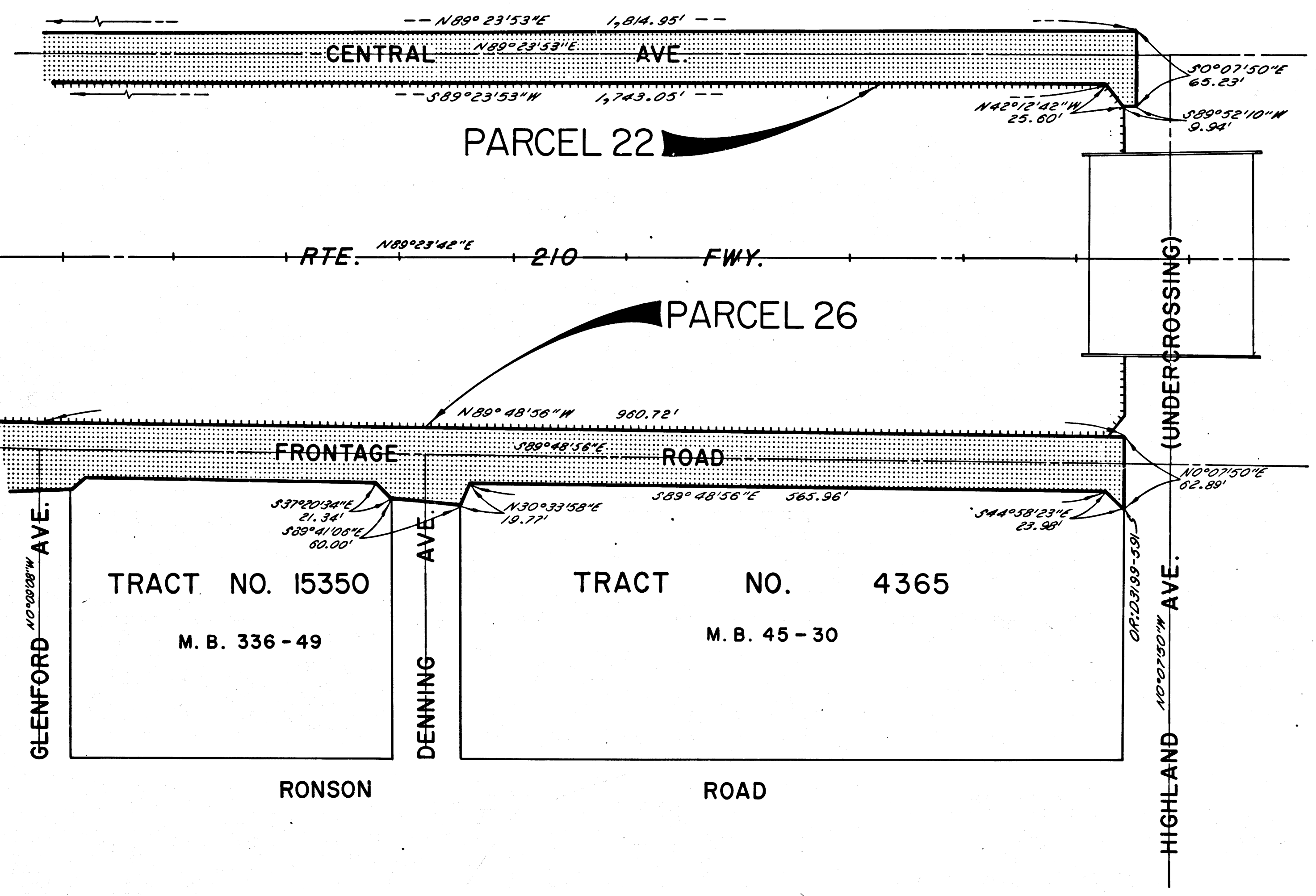
DR'N BY M.A.C.	R/W MAP NO. F-1227
C'LC BY G.D.W.	REF. MAP NO. 175-6
C'K'D BY S.L.T.	REL-668
REVISED	669

BOOK 7 PAGE 44

COUNTY ENGINEER'S COPY

DIST	COUNTY	ROUTE	POST MILES	SHEET NO.	TOTAL SHEETS
07	L.A.	210	32.9/35.9	14	14

H. W. Weatherholt
 SENIOR HIGHWAY ENGINEER
 Sept. 30, 1968
 DATE



FILED WITH LOS ANGELES
 COUNTY RECORDER, RAY E. LEE
 OCT 9 1968

INTERSTATE
 STATE OF CALIFORNIA
 TRANSPORTATION AGENCY
 DEPARTMENT OF PUBLIC WORKS
 DIVISION OF HIGHWAYS

PROPOSED RELINQUISHMENT

0 50 100 150 200

AREA TO BE RELINQUISHED SHOWN THUS [Dotted Pattern]
 ACCESS PROHIBITED [Hatched Pattern]

DR'N BY M.A.C.	R/W MAP NO. F1227
C'LG BY G.D.W.	REF. MAP NO. 175-6
C'K'D BY S.L.T.	REL- 668
REVISED	669

CITY OF DUARTE

COUNTY ENGINEER'S COPY

BOOK 7 PAGE 45