

DIST	COUNTY	ROUTE	POST MILES	SHEET NO.	TOTAL SHEETS
07	L.A.	210	33.4	1	2

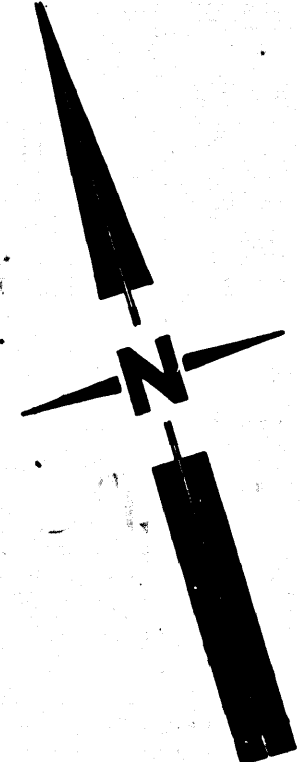
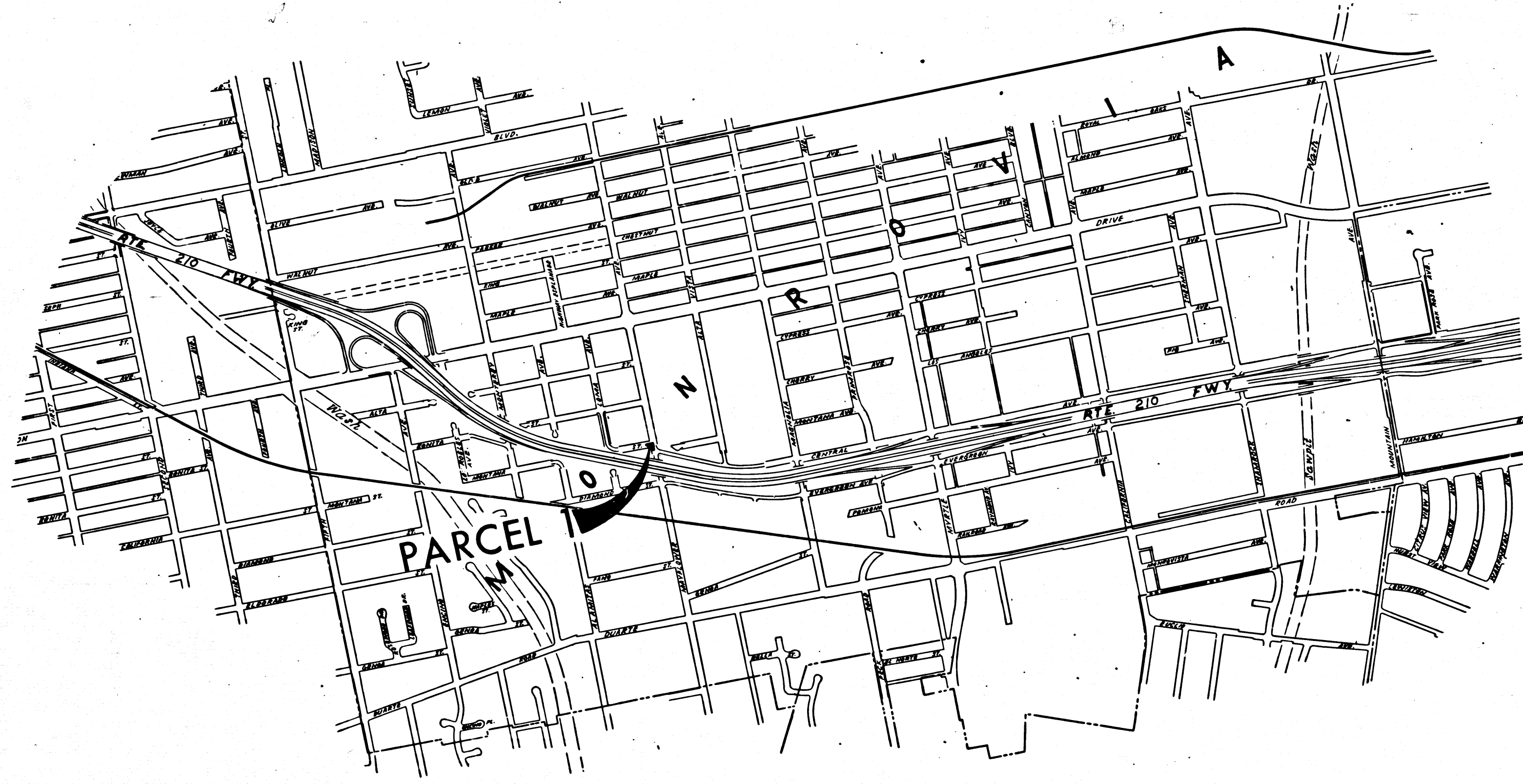
STATE OF CALIFORNIA
 TRANSPORTATION AGENCY
 DEPARTMENT OF PUBLIC WORKS
 DIVISION OF HIGHWAYS

RIGHT OF WAY MAPS OF
STATE HIGHWAY
 IN LOS ANGELES COUNTY ON ROUTE 210 FREEWAY
 AT MAYFLOWER AVE.

C. W. Hoy
 DEPUTY DISTRICT ENGINEER
 Nov. 14, 1968
 DATE

2535

FILED
 AT REQUEST OF
 DEPT. OF PUBLIC WORKS
 NOV. 19, 1968
 12:11 PM
 IN BOOK 7
 PAGE 50
 OF STATE HIGHWAY MAPS
 LOS ANGELES COUNTY, CALIF.
 RAY E. LEE
 COUNTY RECORDER
Chas. Free
 Deputy



INTERSTATE
 STATE OF CALIFORNIA
 TRANSPORTATION AGENCY
 DEPARTMENT OF PUBLIC WORKS
 DIVISION OF HIGHWAYS
 PROPOSED RELINQUISHMENT

SCALE
 0 600 1200 1800 2400 -

DR'N BY <i>U.K.</i>	R/W MAP NO. F1223-4
C'LC BY <i>G.D.W.</i>	REF. MAP NO.
C'K'D BY <i>M.M.</i>	REL-689
REVISED	

COUNTY ENGINEER'S COPY

7/50-51
 11/12

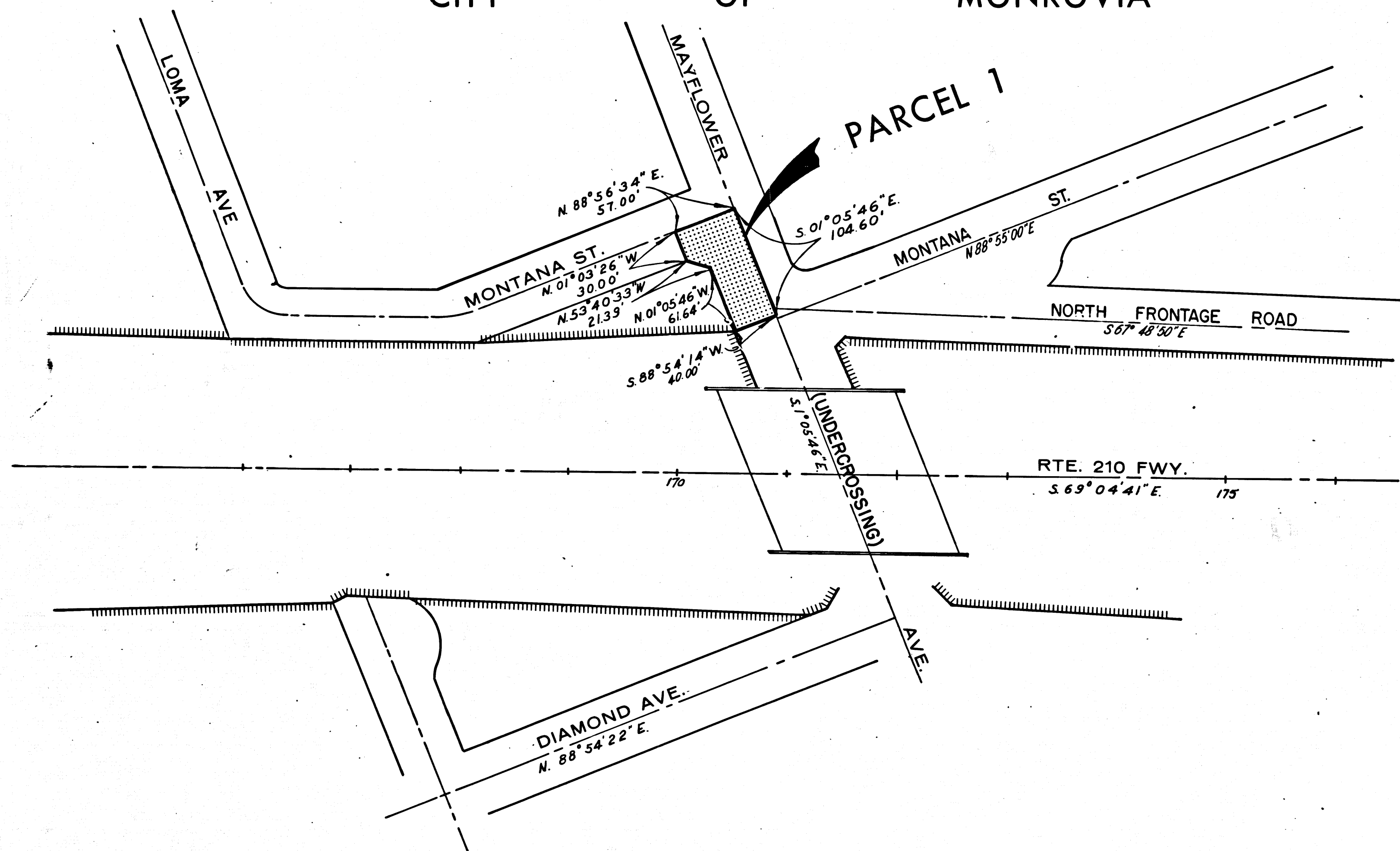
DIST	COUNTY	ROUTE	POST MILES	SHEET NO.	TOTAL SHEETS
07	L.A.	210	33.4	2	2

CITY OF MONROVIA

R.W. Bell
 SENIOR HIGHWAY ENGINEER
 Nov. 14, 1968
 DATE

FILED WITH LOS ANGELES
 COUNTY RECORDER, RAY E. LEE
 NOV 19 1968

PARCEL 1



INTERSTATE
 STATE OF CALIFORNIA
 TRANSPORTATION AGENCY
 DEPARTMENT OF PUBLIC WORKS
 DIVISION OF HIGHWAYS

PROPOSED RELINQUISHMENT

0 50 100 150 200

AREA TO BE RELINQUISHED SHOWN THUS

ACCESS PROHIBITED

DR'N BY G.W.	R/W MAP NO. F 1223-4
C'LC BY G.W.	REF. MAP NO.
C'K'D BY M.M.	REL- 689
REVISED	

COUNTY ENGINEER'S COPY