

DIST	COUNTY	ROUTE	POST MILES	SHEET NO.	TOTAL SHEETS
07	L. A.	118	1.1/2.4	1	4

STATE OF CALIFORNIA
 TRANSPORTATION AGENCY
 DEPARTMENT OF PUBLIC WORKS
 DIVISION OF HIGHWAYS

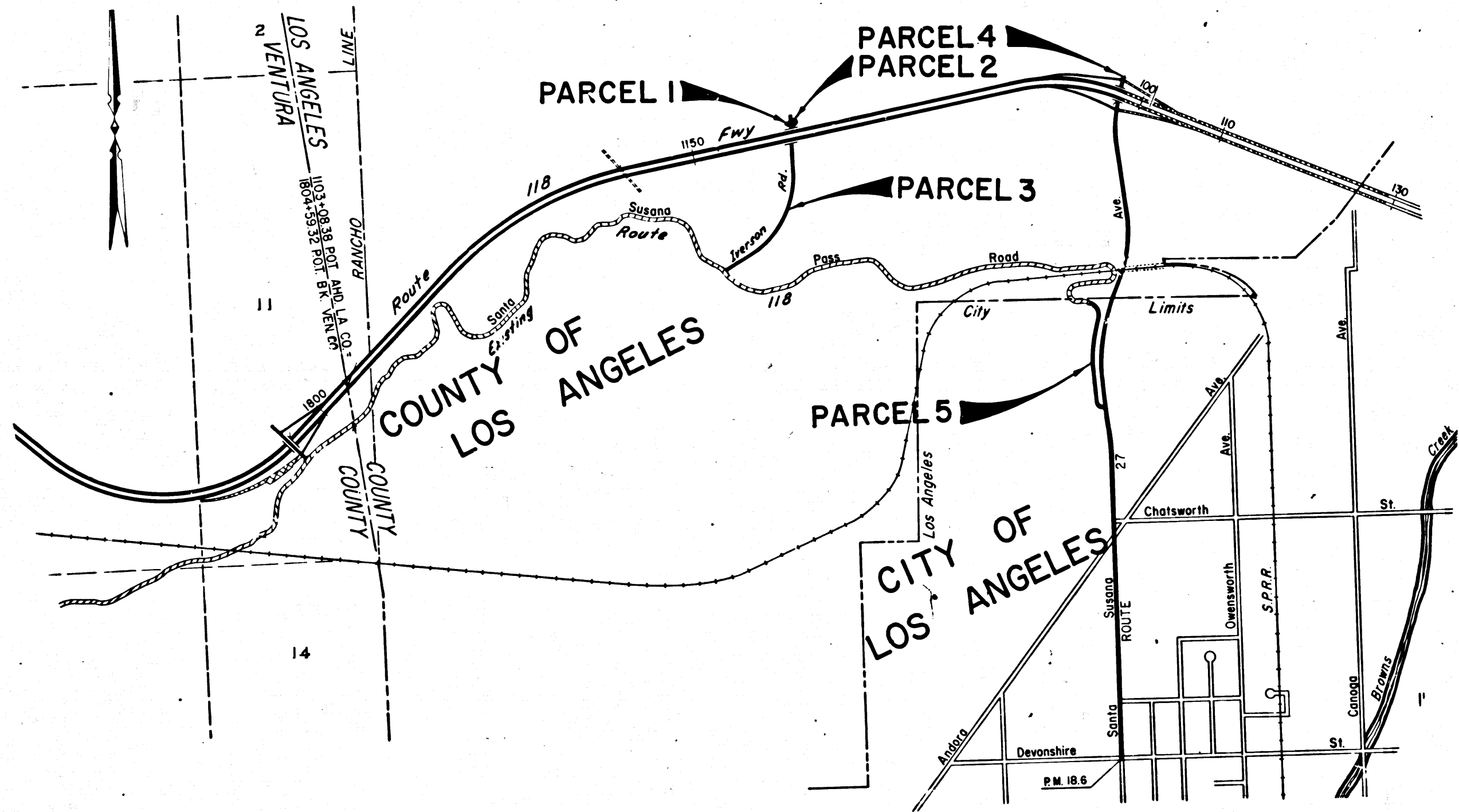
Anthony
 DEPUTY DISTRICT ENGINEER
 Nov. 14, 1968
 DATE

RIGHT OF WAY MAPS OF
STATE HIGHWAY

In Los Angeles County and the City of Los Angeles
 on Route 118 between Iverson Road and
 Route 27

2536

FILED
 AT REQUEST OF
 DEPT. OF PUBLIC WORKS
 NOV. 19, 1968
 12:00 PM
 IN BOOK 7
 AT PAGE 52
 OF STATE HIGHWAY MAPS
 LOS ANGELES COUNTY, CALIF.
 RAY E. KEE
 COUNTY RECORDER
Free



STATE OF CALIFORNIA
 TRANSPORTATION AGENCY
 DEPARTMENT OF PUBLIC WORKS
 DIVISION OF HIGHWAYS
PROPOSED RELINQUISHMENT

SCALE IN FEET
 1000 0 1000 2000

DR'N BY	M.A.C.	R/W MAP NO.	12130
C'LC BY	M.M.	REF. MAP NO.	171-B
C'K'D BY	G.D.W.	REL-	686,687
REVISED			

COUNTY ENGINEER'S COPY

1/5-55

DIST	COUNTY	ROUTE	POST MILES	SHEET NO.	TOTAL SHEETS
07	L.A.	118	1.1/2.4	2	4

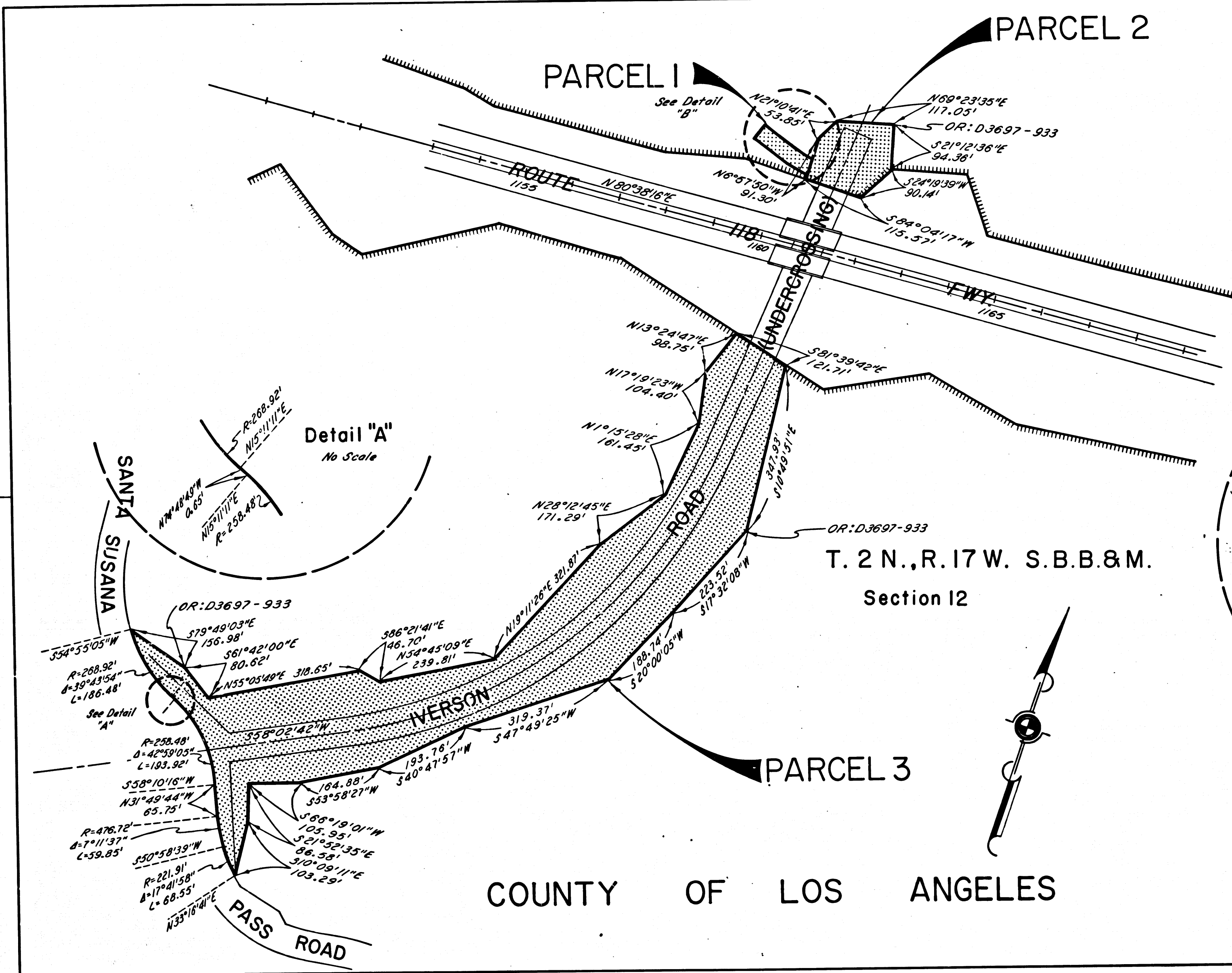
R.W. Fisher
 SENIOR HIGHWAY ENGINEER
 Nov. 14, 1968
 DATE

FILED WITH LOS ANGELES
 COUNTY RECORDER, RAY E. LEE
 NOV 19 1968

PARCEL 2

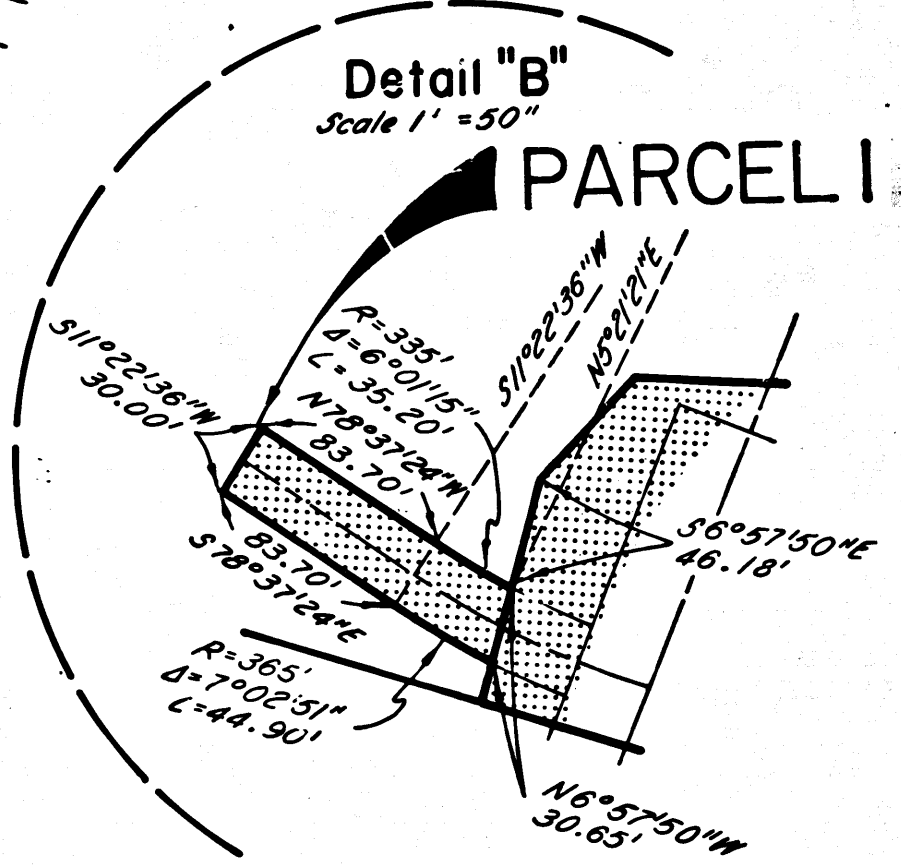
PARCEL 1
 See Detail "B"

PARCEL 3



Detail "A"
 No Scale

Detail "B"
 Scale 1" = 50'



T. 2 N., R. 17 W. S. B. B. & M.
 Section 12

COUNTY OF LOS ANGELES

STATE OF CALIFORNIA
 TRANSPORTATION AGENCY
 DEPARTMENT OF PUBLIC WORKS
 DIVISION OF HIGHWAYS

PROPOSED RELINQUISHMENT

0 100 200 300 400

AREA TO BE RELINQUISHED SHOWN THUS

ACCESS PROHIBITED

DR'N BY M.A.C.	R/W MAP NO. F-2130
C'LG BY M.M.	REF. MAP NO. 171-B
C'K'D BY G.D.W.	REL-686,687
REVISED	

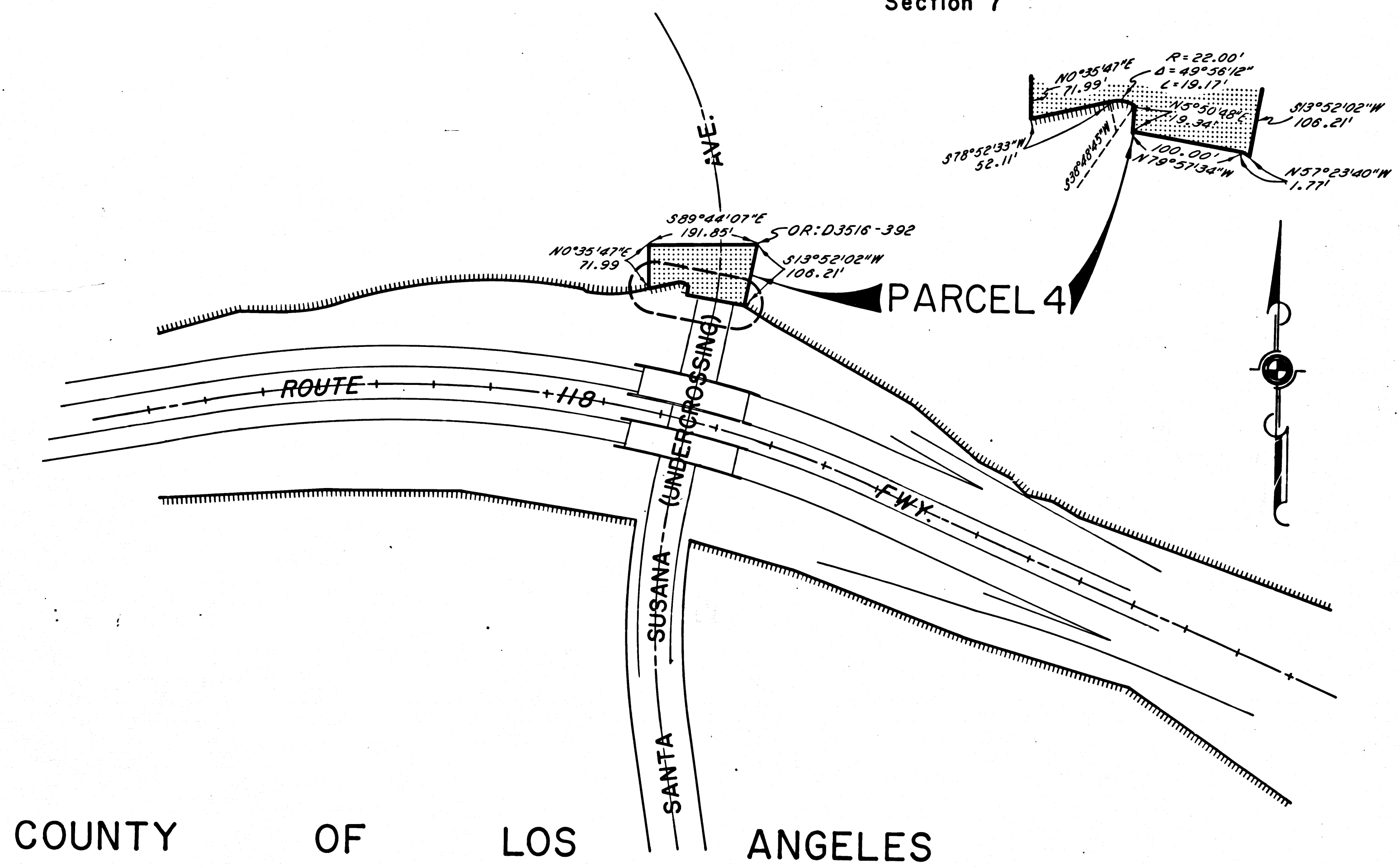
COUNTY ENGINEER'S COPY

DIST	COUNTY	ROUTE	POST MILES	SHEET NO.	TOTAL SHEETS
07	L.A.	118	1.1/2.4	3	4

T. 2 N., R. 16 W. S. B. B. & M.
Section 7

R. W. Feltner
SENIOR HIGHWAY ENGINEER
Nov. 14, 1968
DATE

FILED WITH LOS ANGELES
COUNTY RECORDER, RAY E. LEE
NOV 19 1968



COUNTY OF LOS ANGELES

STATE OF CALIFORNIA
TRANSPORTATION AGENCY
DEPARTMENT OF PUBLIC WORKS
DIVISION OF HIGHWAYS

PROPOSED RELINQUISHMENT

0 100 200 300 400

AREA TO BE RELINQUISHED SHOWN THUS [stippled pattern]

ACCESS PROHIBITED [hatched pattern]

DR'N BY	M. A. C.	R/W MAP NO.	F-2130
C'LC BY	M. M.	REF. MAP NO.	171-B
C'K'D BY	G. D. W.	REL-686,687	
REVISED			

COUNTY ENGINEER'S COPY

DIST	COUNTY	ROUTE	POST MILES	SHEET NO.	TOTAL SHEETS
07	C.A.	118	1.1/2.4	4	4

CITY OF LOS ANGELES

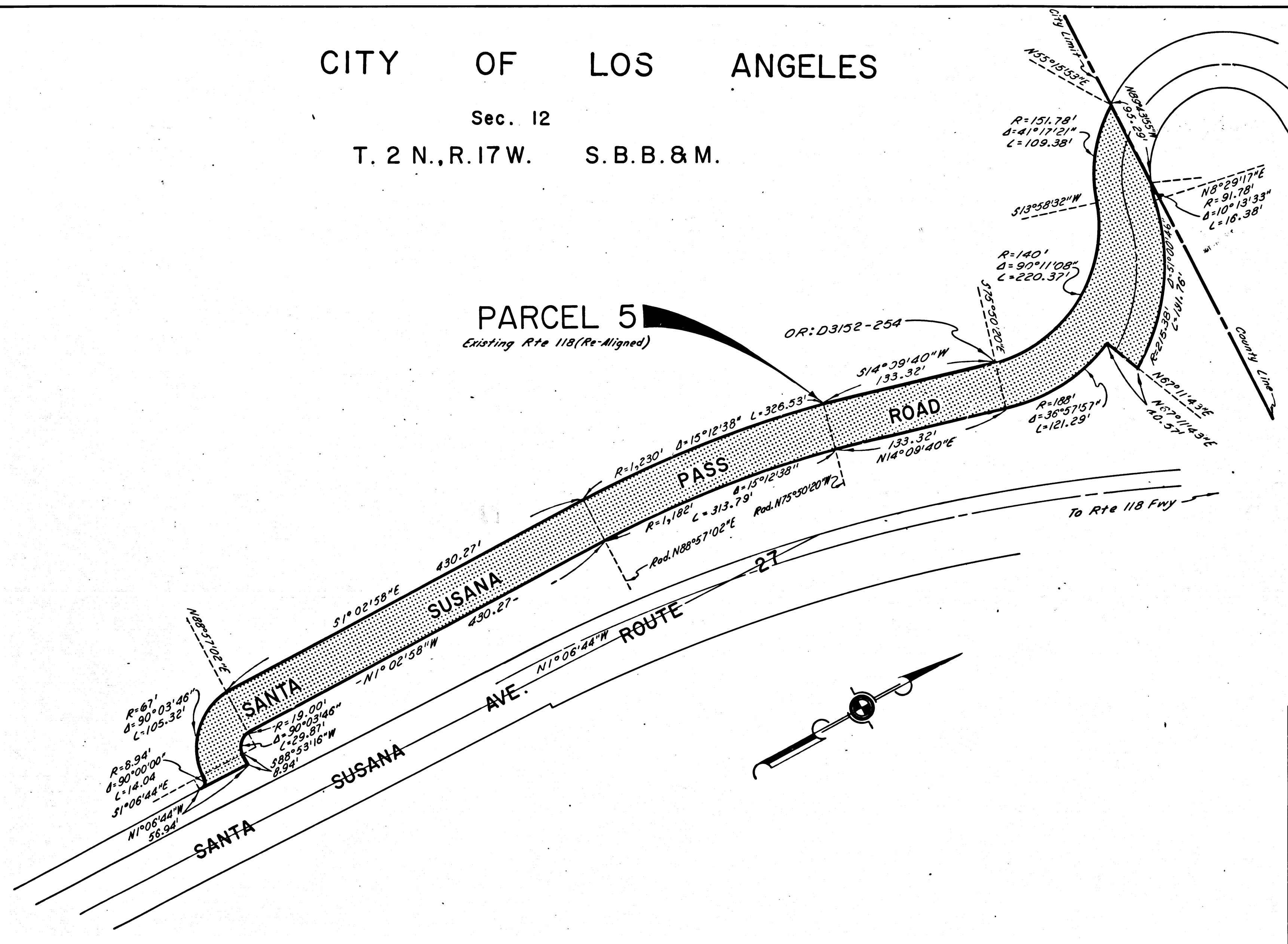
Sec. 12

T. 2 N., R. 17 W. S. B. B. & M.

M.F.M.
SENIOR HIGHWAY ENGINEER
Nov. 14, 1968
DATE
FILED WITH LOS ANGELES
COUNTY RECORDER, RAY E. LEE
NOV 19 1968

COUNTY OF
LOS
ANGELES

PARCEL 5
Existing Rte 118 (Re-Aligned)



STATE OF CALIFORNIA
TRANSPORTATION AGENCY
DEPARTMENT OF PUBLIC WORKS
DIVISION OF HIGHWAYS

PROPOSED RELINQUISHMENT

0 50 100 150 200

AREA TO BE RELINQUISHED SHOWN THUS

ACCESS PROHIBITED

DR'N BY <i>M.A.C.</i>	R/W MAP NO. 14714
C'LC BY <i>M.M.</i>	REF. MAP NO. 171-B
C'K'D BY <i>G.D.W.</i>	REL-686,687
REVISED	