

DIST	COUNTY	ROUTE	POST MILES	SHEET NO.	TOTAL SHEETS
07	LA	90	2.1/2.9	1	4

STATE OF CALIFORNIA
 TRANSPORTATION AGENCY
 DEPARTMENT OF PUBLIC WORKS
 DIVISION OF HIGHWAYS

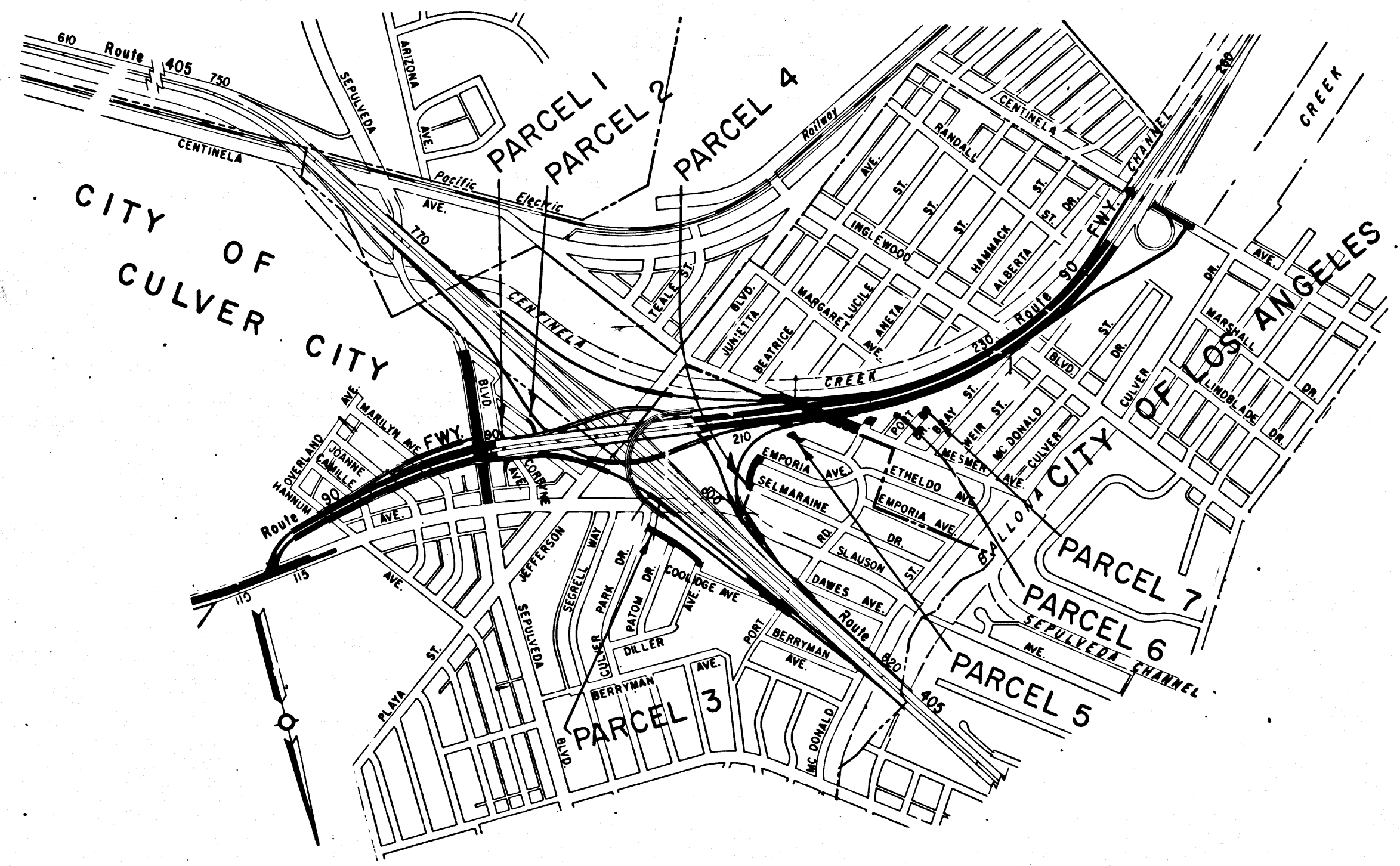
Anthony
 DEPUTY DISTRICT ENGINEER
 Nov. 14, 1968
 DATE

RIGHT OF WAY MAPS OF
STATE HIGHWAY

IN THE COUNTY OF LOS ANGELES ON RTE. 90 FWY.
 BETWEEN SEPULVEDA BLVD. AND INGLEWOOD BLVD.

2537

FILED
 AT REQUEST OF
 DEPT. OF PUBLIC WORKS
 Nov. 14, 1968
 12 000 11AM
 IN BOOK 7
 AT PAGE 56
 OF STATE HIGHWAY MAPS
 LOS ANGELES COUNTY, CALIF.
 RAY E. LEE
 COUNTY ENGINEER
Ray E. Lee



STATE OF CALIFORNIA
 TRANSPORTATION AGENCY
 DEPARTMENT OF PUBLIC WORKS
 DIVISION OF HIGHWAYS
PROPOSED RELINQUISHMENT

SCALE
 0 500 1000 1500 2000

DR'N BY L. S.	R/W MAP NO. F-1552
C'LC BY E. J. P.	REF. MAP NO.
C'K'D BY M. M.	REL-678
REVISED	679

COUNTY ENGINEER'S COPY

7/18/59

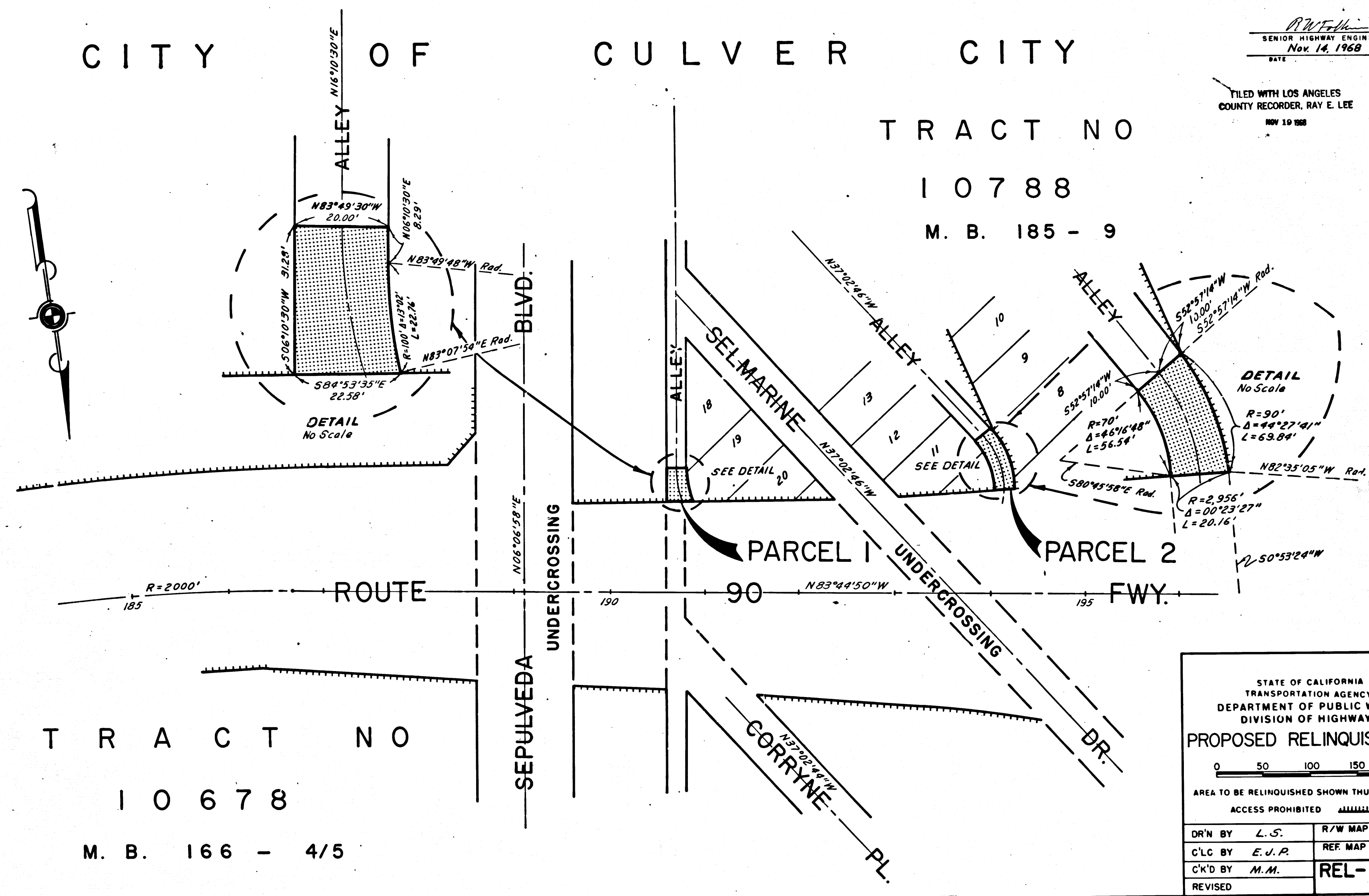
DIST	COUNTY	ROUTE	POST MILES	SHEET NO.	TOTAL SHEETS
07	LA	90	2.1/2.9	2	4

RWF
 SENIOR HIGHWAY ENGINEER
 Nov. 14, 1968
 DATE

FILED WITH LOS ANGELES
 COUNTY RECORDER, RAY E. LEE
 NOV 19 1968

CITY OF CULVER CITY

TRACT NO
 10788
 M. B. 185 - 9



TRACT NO
 10678
 M. B. 166 - 4/5

STATE OF CALIFORNIA
 TRANSPORTATION AGENCY
 DEPARTMENT OF PUBLIC WORKS
 DIVISION OF HIGHWAYS

PROPOSED RELINQUISHMENT

0 50 100 150 200

AREA TO BE RELINQUISHED SHOWN THUS

ACCESS PROHIBITED

DR'N BY	L.S.	R/W MAP NO.	F-2142
C'LG BY	E.J.P.	REF. MAP NO.	
C'K'D BY	M.M.	REL-	678
REVISED			679

COUNTY ENGINEER'S COPY

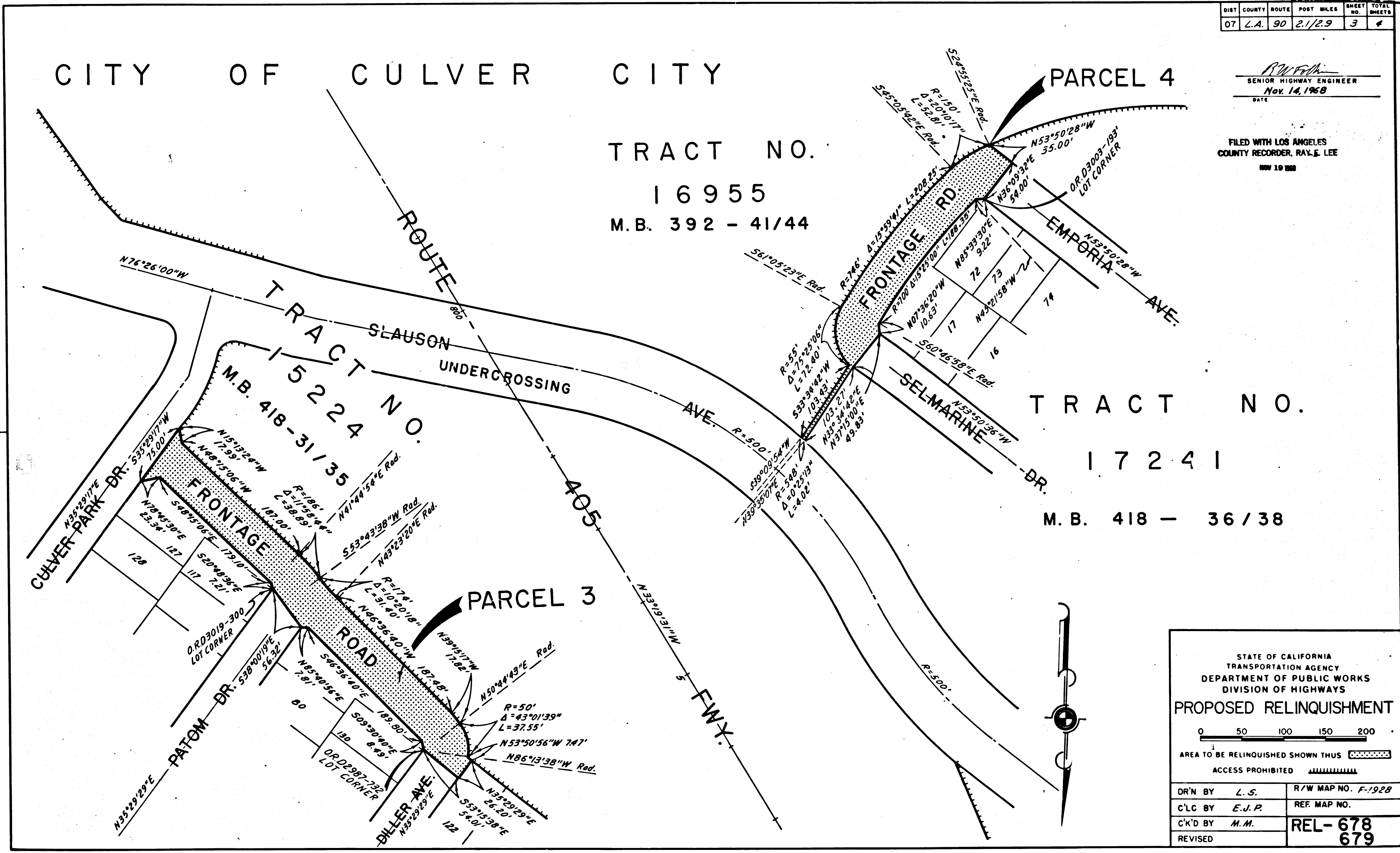
DIST	COUNTY	ROUTE	POST MILES	SHEET NO.	TOTAL SHEETS
07	L.A.	90	21/29	3	4

CITY OF CULVER CITY

TRACT NO.
16955
M.B. 392 - 41/44

R.W. Felt
SENIOR HIGHWAY ENGINEER
Nov. 14, 1968
DATE

FILED WITH LOS ANGELES
COUNTY RECORDER, RAY E. LEE
NOV 19 1968



TRACT NO.
17241
M.B. 418 - 36/38

STATE OF CALIFORNIA
TRANSPORTATION AGENCY
DEPARTMENT OF PUBLIC WORKS
DIVISION OF HIGHWAYS

PROPOSED RELINQUISHMENT

0 50 100 150 200

AREA TO BE RELINQUISHED SHOWN THUS

ACCESS PROHIBITED

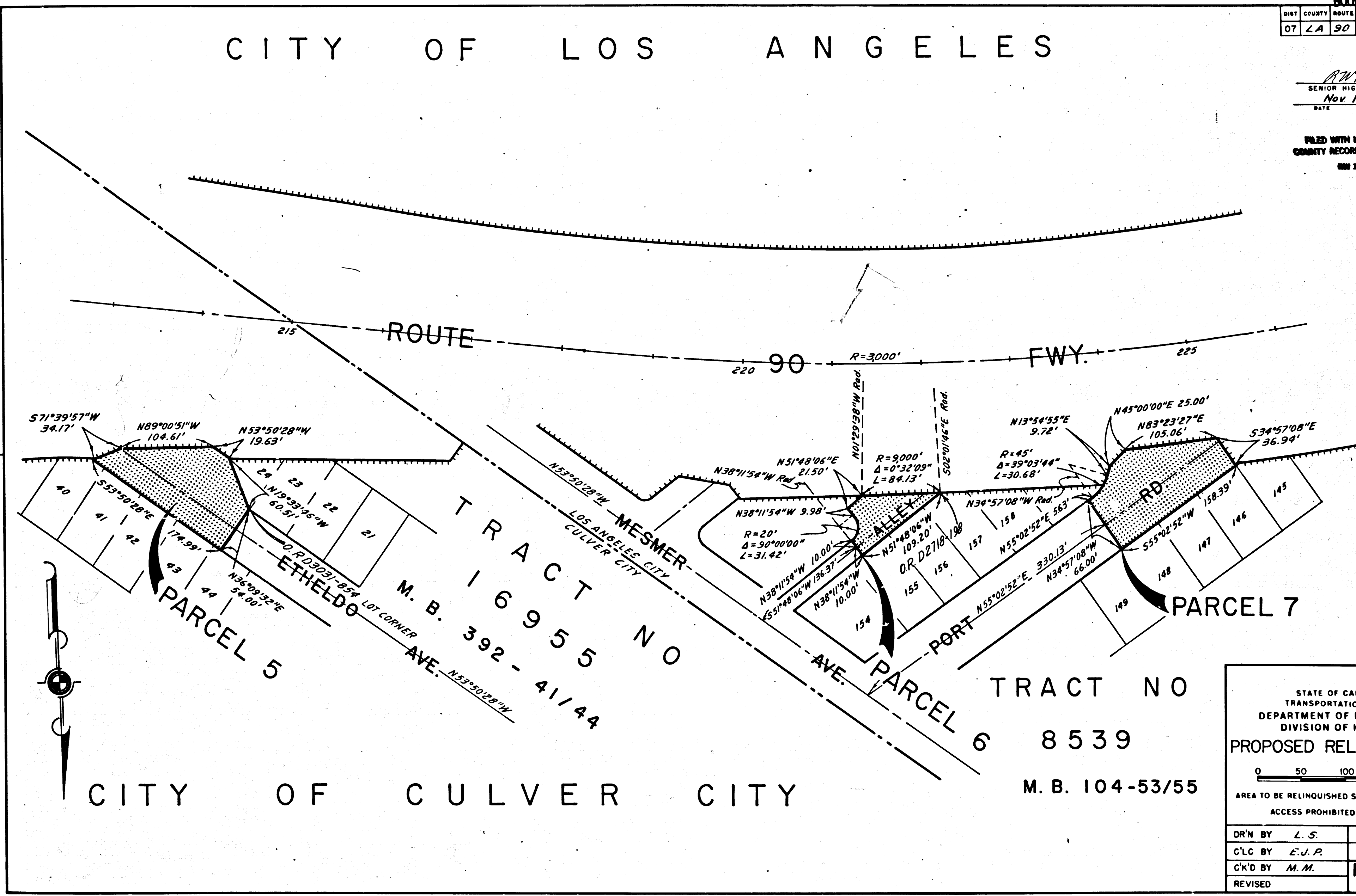
DR'N BY	L.S.	R/W MAP NO.	F-1928
C'LC BY	E.J.P.	REF. MAP NO.	
C'K'D BY	M.M.	REL-678	
REVISED		679	

DIST	COUNTY	ROUTE	POST MILES	SHEET NO.	TOTAL SHEETS
07	LA	90	2.1/2.9	4	4

CITY OF LOS ANGELES

R.W. Fisher
 SENIOR HIGHWAY ENGINEER
 Nov. 14, 1968
 DATE

FILED WITH LOS ANGELES
 COUNTY RECORDER, RAY E. LEE
 NOV 19 1968



CITY OF CULVER CITY

TRACT NO
 8539
 M. B. 104-53/55

STATE OF CALIFORNIA
 TRANSPORTATION AGENCY
 DEPARTMENT OF PUBLIC WORKS
 DIVISION OF HIGHWAYS

PROPOSED RELINQUISHMENT

0 50 100 150 200

AREA TO BE RELINQUISHED SHOWN THUS [diagonal line pattern]

ACCESS PROHIBITED [cross-hatch pattern]

DR'N BY	L. S.	R/W MAP NO.	F-1552
C'LC BY	E. J. P.	REF. MAP NO.	
C'K'D BY	M. M.	REL-678	
REVISED		679	

COUNTY ENGINEER'S COPY