

DIST	COUNTY	ROUTE	POST MILES	SHEET NO.	TOTAL SHEETS
07	L.A.	210	35.9363	1	4
07	L.A.	605	25.7		

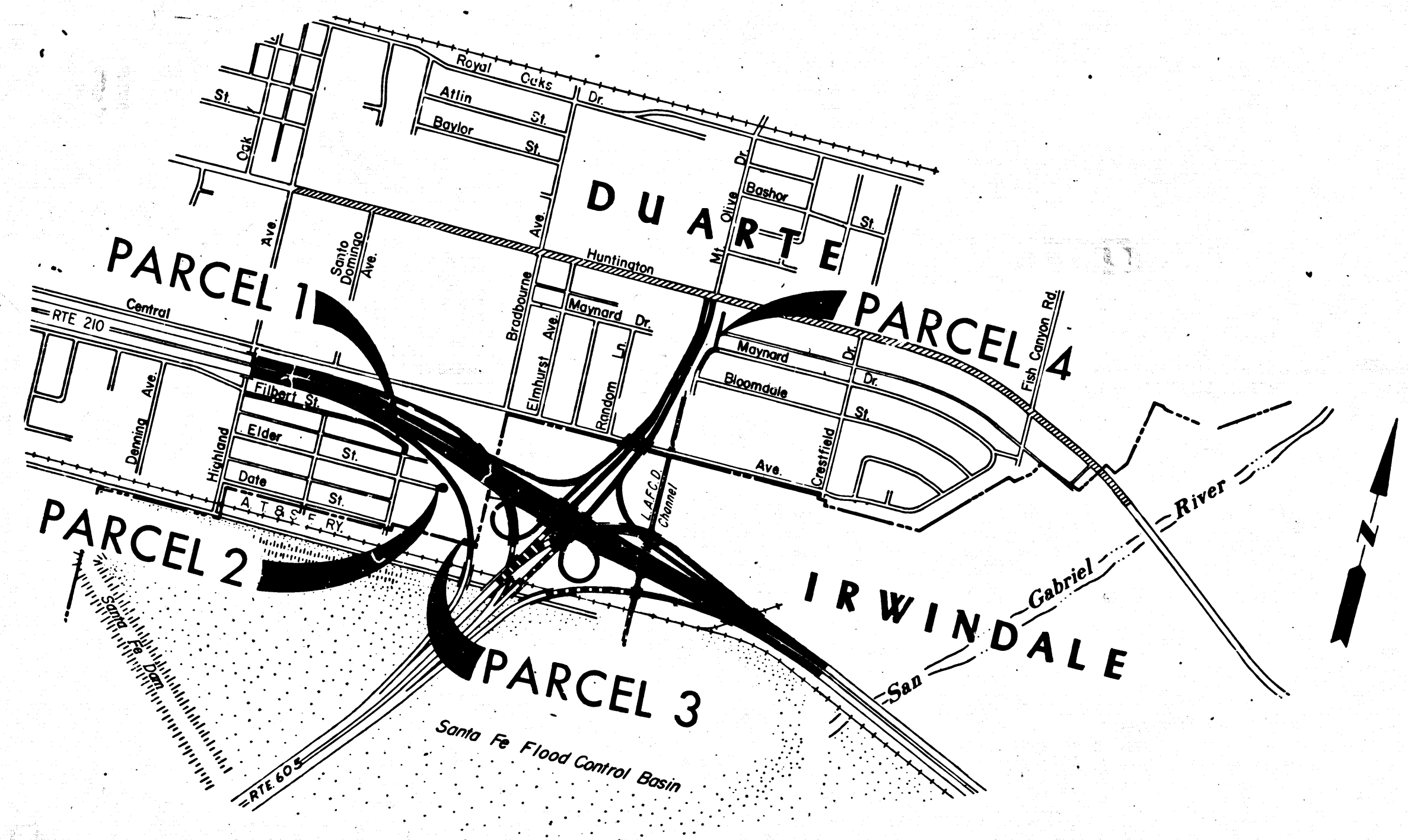
STATE OF CALIFORNIA
 TRANSPORTATION AGENCY
 DEPARTMENT OF PUBLIC WORKS
 DIVISION OF HIGHWAYS

RIGHT OF WAY MAPS OF
STATE HIGHWAY
 IN LOS ANGELES COUNTY

in Duarte between Highland Ave. and L.A.F.C.D. Channel

C.W. Hoy
 DEPUTY DISTRICT ENGINEER
 Nov 27, 1968
 DATE

2966
 FILED
 AT REQUEST OF
 DEPT. OF PUBLIC WORKS
 DEC 2, 1968
 1 PAST 3 P.M.
 IN BOOK 7
 AT PAGE 60
 OF STATE HIGHWAY MAPS
 LOS ANGELES COUNTY, CALIF.
 RAY G. LEE
 COUNTY ENGINEER
Free



INTERSTATE
 STATE OF CALIFORNIA
 TRANSPORTATION AGENCY
 DEPARTMENT OF PUBLIC WORKS
 DIVISION OF HIGHWAYS
 PROPOSED RELINQUISHMENT

SCALE IN FEET
 0 500 1000 1500

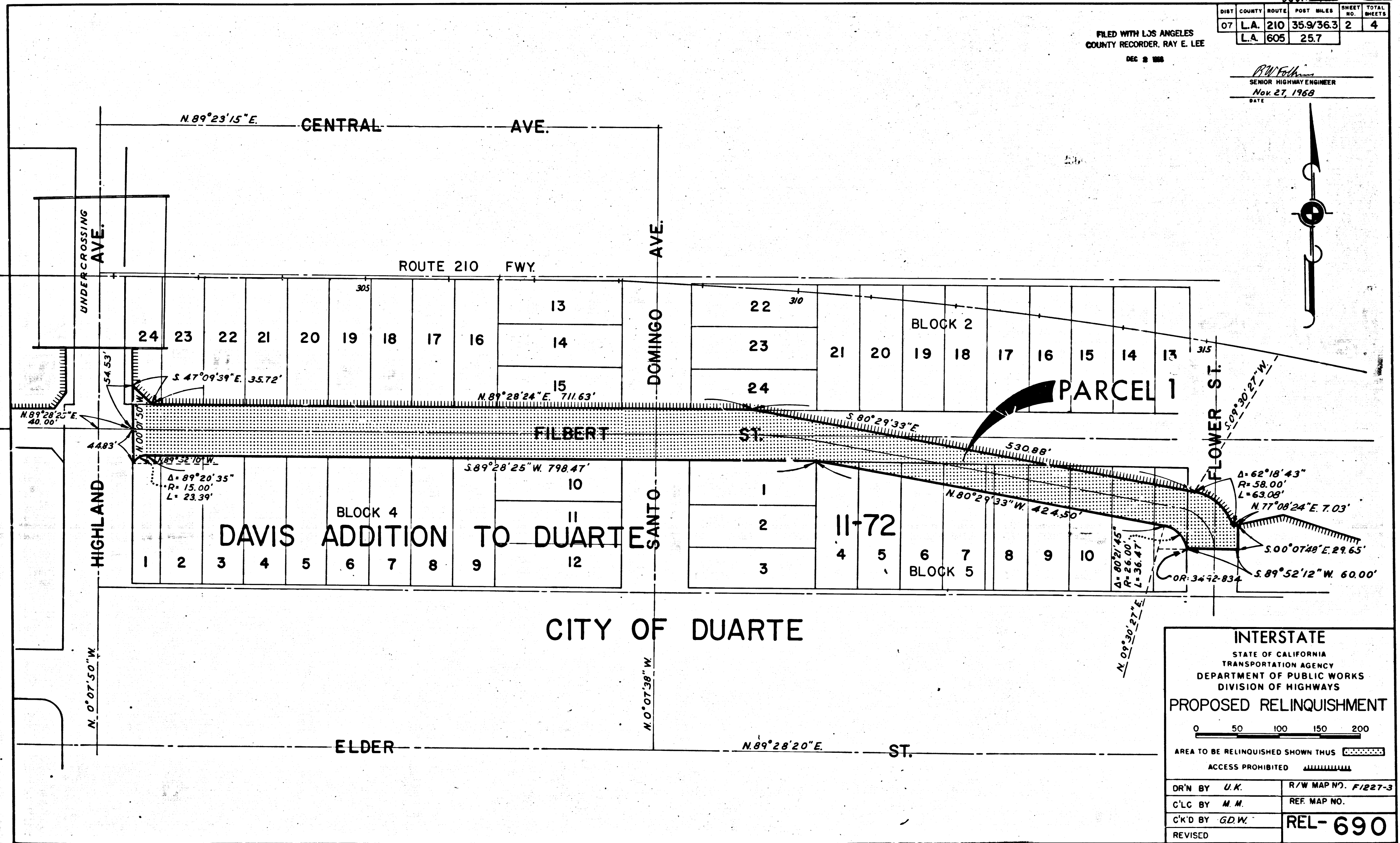
DR'N BY <i>U.K.</i>	R/W MAP NO. <i>F-1227</i>
C'LC BY <i>M.M.</i>	REF. MAP NO.
C'K'D BY <i>G.D.W.</i>	REL-690
REVISED	

COUNTY ENGINEER'S COPY

FILED WITH LOS ANGELES
COUNTY RECORDER, RAY E. LEE
DEC 8 1968

DIST	COUNTY	ROUTE	POST MILES	SHEET NO.	TOTAL SHEETS
07	L.A.	210	35.9/36.3	2	4
	L.A.	605	25.7		

R.W. Fellman
SENIOR HIGHWAY ENGINEER
Nov. 27, 1968
DATE



INTERSTATE
STATE OF CALIFORNIA
TRANSPORTATION AGENCY
DEPARTMENT OF PUBLIC WORKS
DIVISION OF HIGHWAYS

PROPOSED RELINQUISHMENT

0 50 100 150 200

AREA TO BE RELINQUISHED SHOWN THUS

ACCESS PROHIBITED

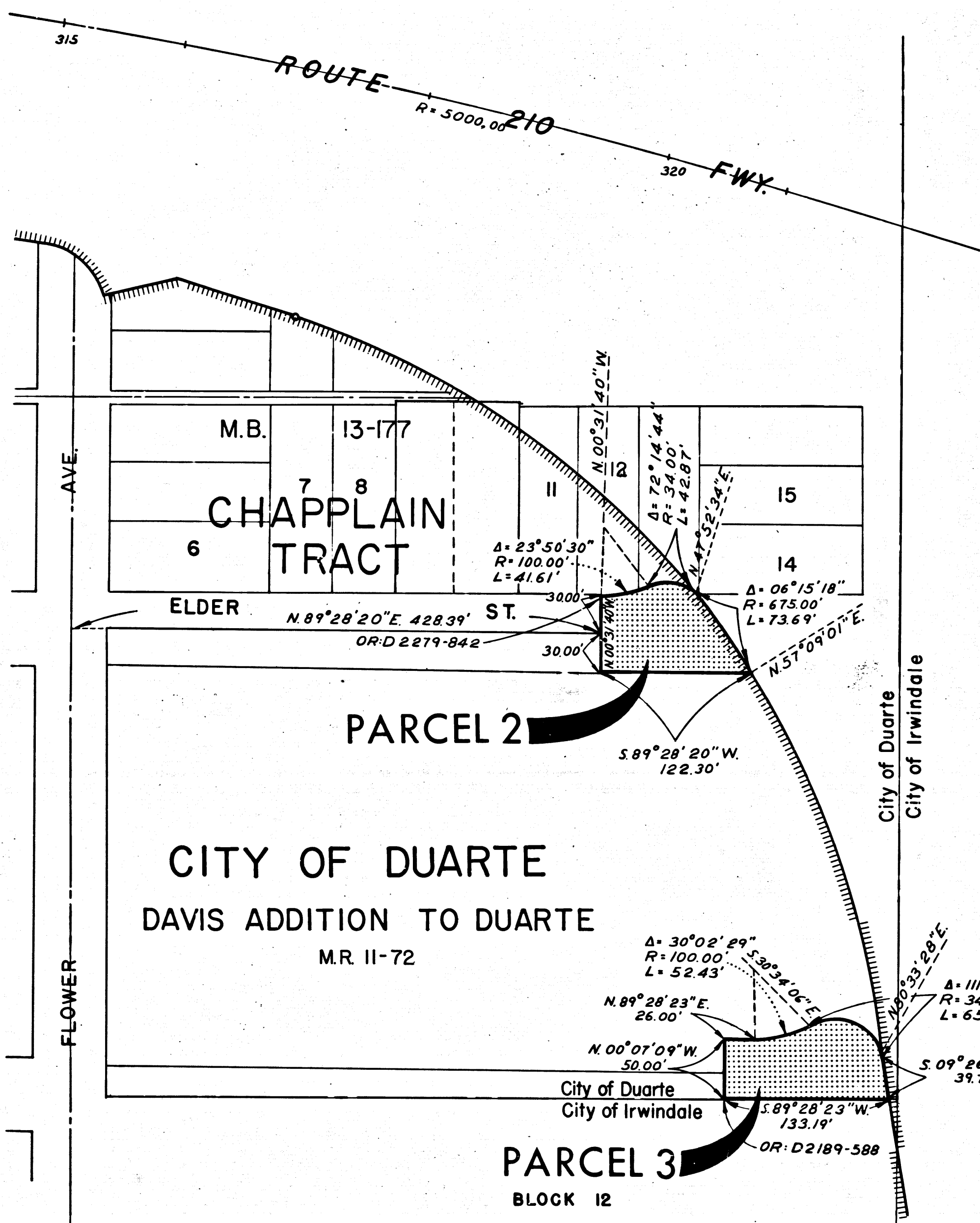
DR'N BY <i>U.K.</i>	R/W MAP NO. <i>F1227-3</i>
C'LC BY <i>M.M.</i>	REF. MAP NO.
C'KD BY <i>G.D.W.</i>	REL-690
REVISED	

COUNTY ENGINEER'S COPY

FILED WITH LOS ANGELES
COUNTY RECORDER, RAY E. LEE
DEC 8 1968

DIST	COUNTY	ROUTE	POST MILES	SHEET NO.	TOTAL SHEETS
07	L.A.	210	35.9/36.3	3	4
	L.A.	605	25.7		

R.M. Felt
SENIOR HIGHWAY ENGINEER
Nov. 27, 1968
DATE



INTERSTATE
STATE OF CALIFORNIA
TRANSPORTATION AGENCY
DEPARTMENT OF PUBLIC WORKS
DIVISION OF HIGHWAYS

PROPOSED RELINQUISHMENT

0 50 100 150 200

AREA TO BE RELINQUISHED SHOWN THUS [stippled pattern]

ACCESS PROHIBITED [hatched pattern]

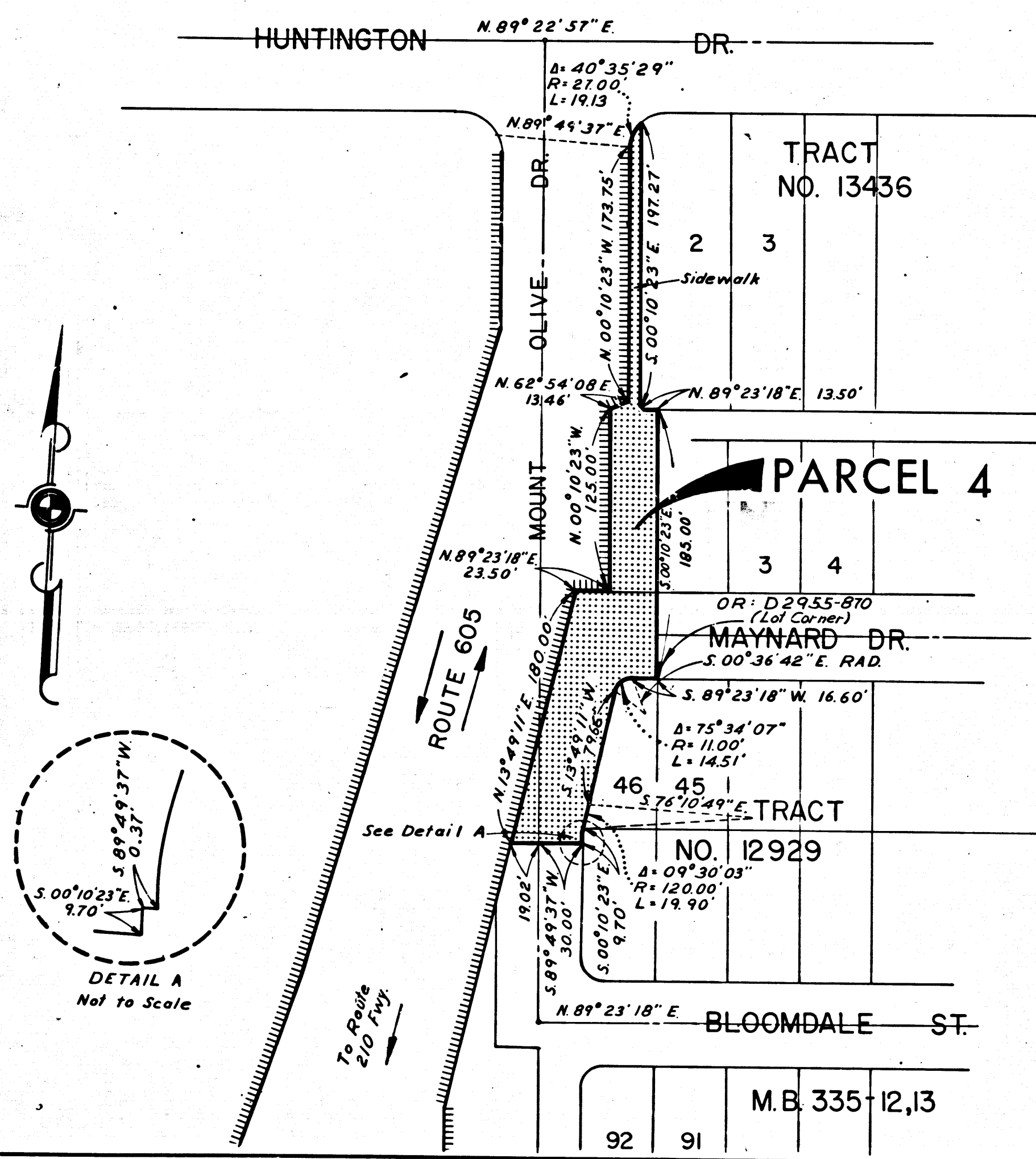
DR'N BY <i>L.K.</i>	R/W MAP NO. F1227-4
C'LC BY <i>M.M.</i>	REF. MAP NO.
C'W'D BY <i>G.D.W.</i>	REL-690
REVISED	

COUNTY ENGINEER'S COPY

FILED WITH LOS ANGELES
COUNTY RECORDER, RAY E. LEE
DEC 8 1968

DIST	COUNTY	ROUTE	POST MILES	SHEET NO.	TOTAL SHEETS
07	L.A.	605	25.7	4	4
	L.A.	210	35.9/36.3		

R. W. Johnson
SENIOR HIGHWAY ENGINEER
Nov. 27, 1968
DATE



CITY OF DUARTE

INTERSTATE
STATE OF CALIFORNIA
TRANSPORTATION AGENCY
DEPARTMENT OF PUBLIC WORKS
DIVISION OF HIGHWAYS

PROPOSED RELINQUISHMENT

0 50 100 150 200

AREA TO BE RELINQUISHED SHOWN THUS ACCESS PROHIBITED

DR'N BY <i>L.K.</i>	R/W MAP NO. <i>F1972-1</i>
C'LC BY <i>M.M.</i>	REF. MAP NO.
C'K'D BY <i>G.D.W.</i>	REL-690
REVISED	