

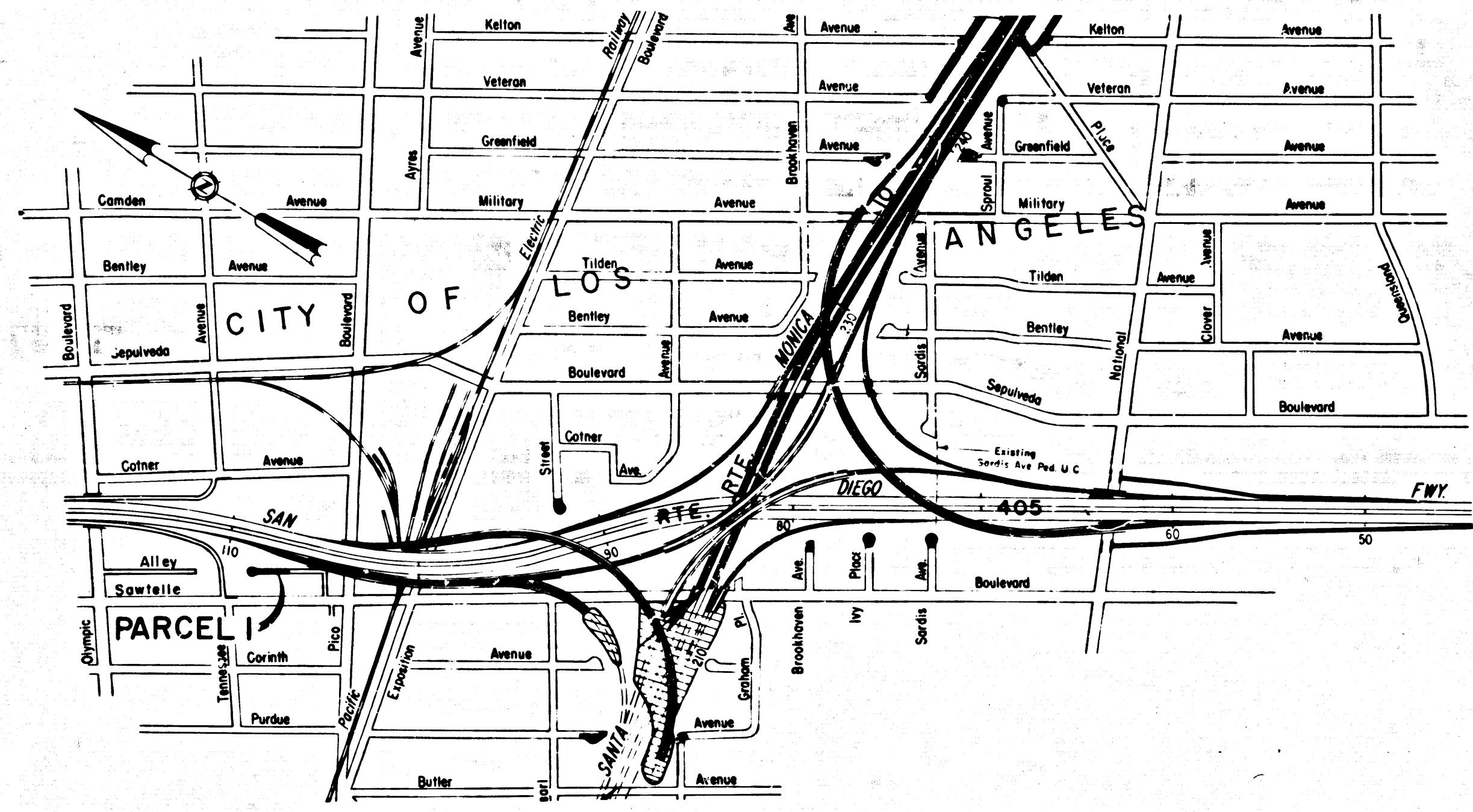
DIST	COUNTY	ROUTE	POST MILES	SHEET NO.	TOTAL SHEETS
07	L.A.	405	30.1	1	2

STATE OF CALIFORNIA
 TRANSPORTATION AGENCY
 DEPARTMENT OF PUBLIC WORKS
 DIVISION OF HIGHWAYS
 RIGHT OF WAY MAPS OF
STATE HIGHWAY

Anthony
 DEPUTY DISTRICT ENGINEER
 Jan. 10, 1969
 DATE

1834
 FILED
 AT REQUEST OF
 DEPT. OF PUBLIC WORKS
 JAN. 27, 1969
 2:00 P.M.
 IN BOOK 7
 ON PAGE 64
 OF STATE HIGHWAY MAPS
 LOS ANGELES COUNTY, CALIF.
 RAY E. LEE
 COUNTY RECORDER
Lee REC

San Diego Fwy. near Tennessee Ave.



INTERSTATE
 STATE OF CALIFORNIA
 TRANSPORTATION AGENCY
 DEPARTMENT OF PUBLIC WORKS
 DIVISION OF HIGHWAYS
PROPOSED RELINQUISHMENT

0 500 1000 1500 2000

DR'N BY L.S.	R/W MAP NO. F-1931
C'LC BY G.D.W.	REF. MAP NO.
CK'D BY S.L.T.	REL-647
REVISED 4-23-68	

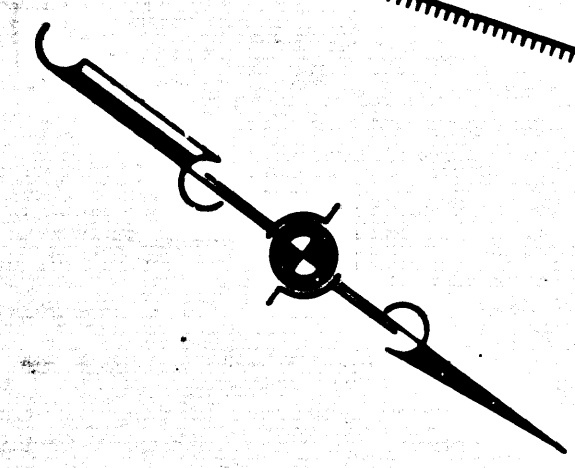
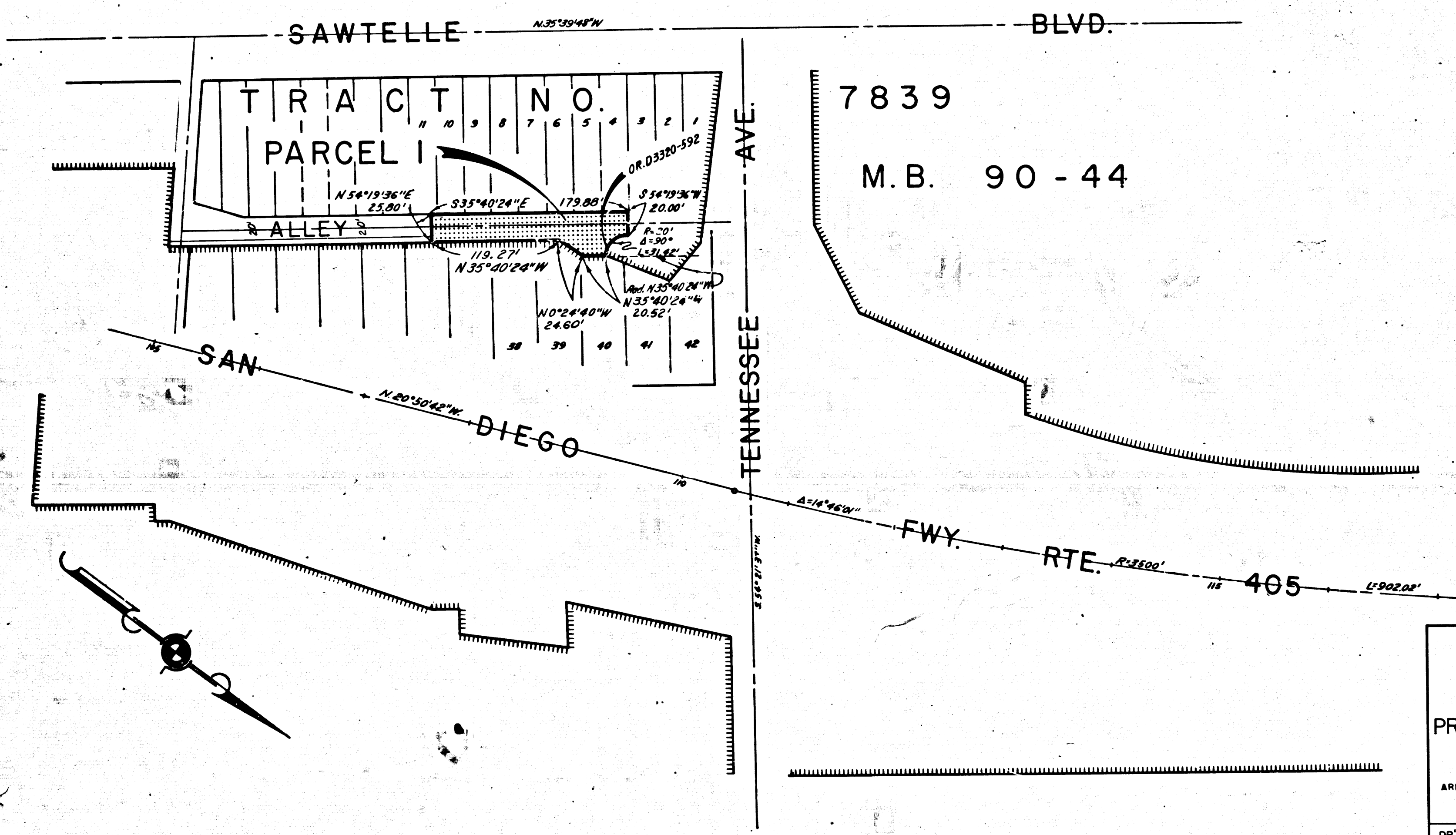
7/14/65 12/10

FILED WITH LOS ANGELES
COUNTY RECORDER, RAY E. LEE
JAN 27 1968

DIST	COUNTY	ROUTE	POST MILES	SHEET NO.	TOTAL SHEETS
07	LA	405	30.1	2	2

R.W. Felt
SENIOR HIGHWAY ENGINEER
Jan. 10, 1968
DATE

CITY OF LOS ANGELES



INTERSTATE
STATE OF CALIFORNIA
TRANSPORTATION AGENCY
DEPARTMENT OF PUBLIC WORKS
DIVISION OF HIGHWAYS

PROPOSED RELINQUISHMENT

0 50 100 150 200

AREA TO BE RELINQUISHED SHOWN THUS

ACCESS PROHIBITED

DR'N BY L.S.	R/W MAP NO. F-1931
C'LC BY G.D.W.	REF. MAP NO.
C'K'D BY S.L.T.	REL-647
REVISED 4-23-68	