

DIST	COUNTY	ROUTE	POST MILES	SHEET NO.	TOTAL SHEETS
07	L.A.	91	14.3/16.6	1	9

STATE OF CALIFORNIA
 TRANSPORTATION AGENCY
 DEPARTMENT OF PUBLIC WORKS
 DIVISION OF HIGHWAYS

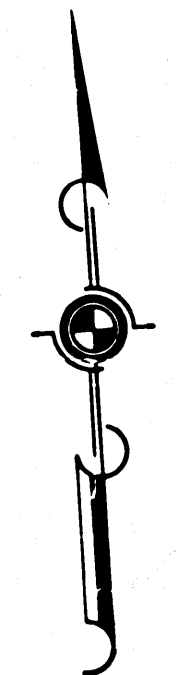
C.W. Hoy
 DEPUTY DISTRICT ENGINEER
 Jan. 22, 1969
 DATE

RIGHT OF WAY MAPS OF
STATE HIGHWAY

In the City of Bellflower between
 Passage Ave. and Palo Verde Ave.

2564

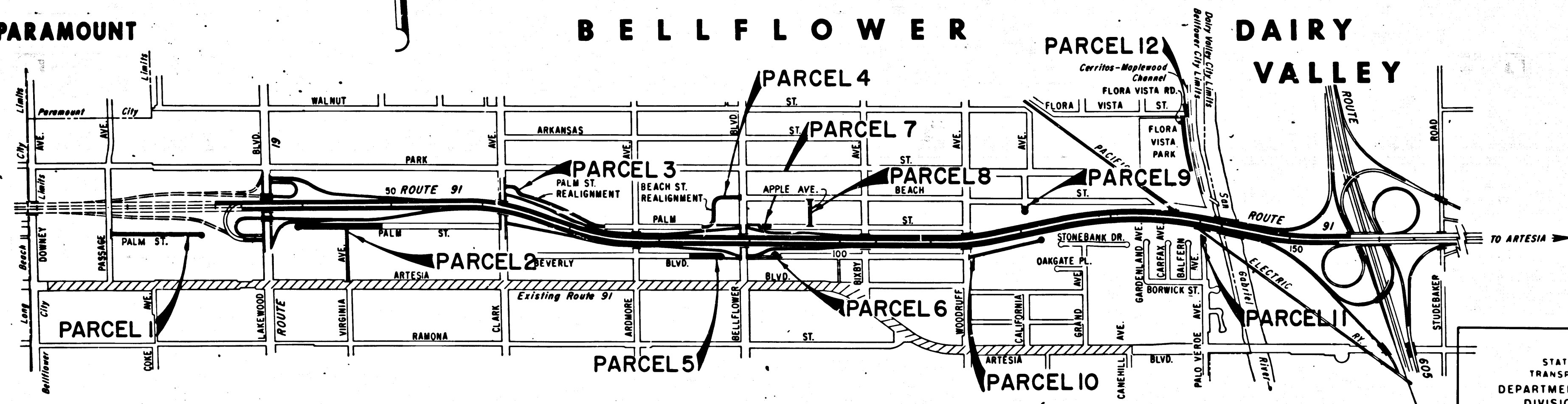
FILED
 AT REQUEST OF
 DEPT. OF PUBLIC WORKS
 FEB. 11, 1969
 20 MIN. PAST 2 P.M.
 IN BOOK 7
 AT PAGE 66
 OF STATE HIGHWAY MAPS
 LOS ANGELES COUNTY, CALIF.
 RAY E. LEE
 COUNTY RECORDER
[Signature]
 Deputy



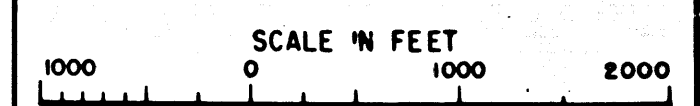
PARAMOUNT

BELLFLOWER

DAIRY VALLEY



STATE OF CALIFORNIA
 TRANSPORTATION AGENCY
 DEPARTMENT OF PUBLIC WORKS
 DIVISION OF HIGHWAYS
PROPOSED RELINQUISHMENT



DR'N BY	M.A.C.	R/W MAP NO.	F-1094 F-1085
C'LC BY	E.J.P.	REF. MAP NO.	177-18
C'K'D BY	G.D.W.	REL-	695
REVISED			

200 7/66-74

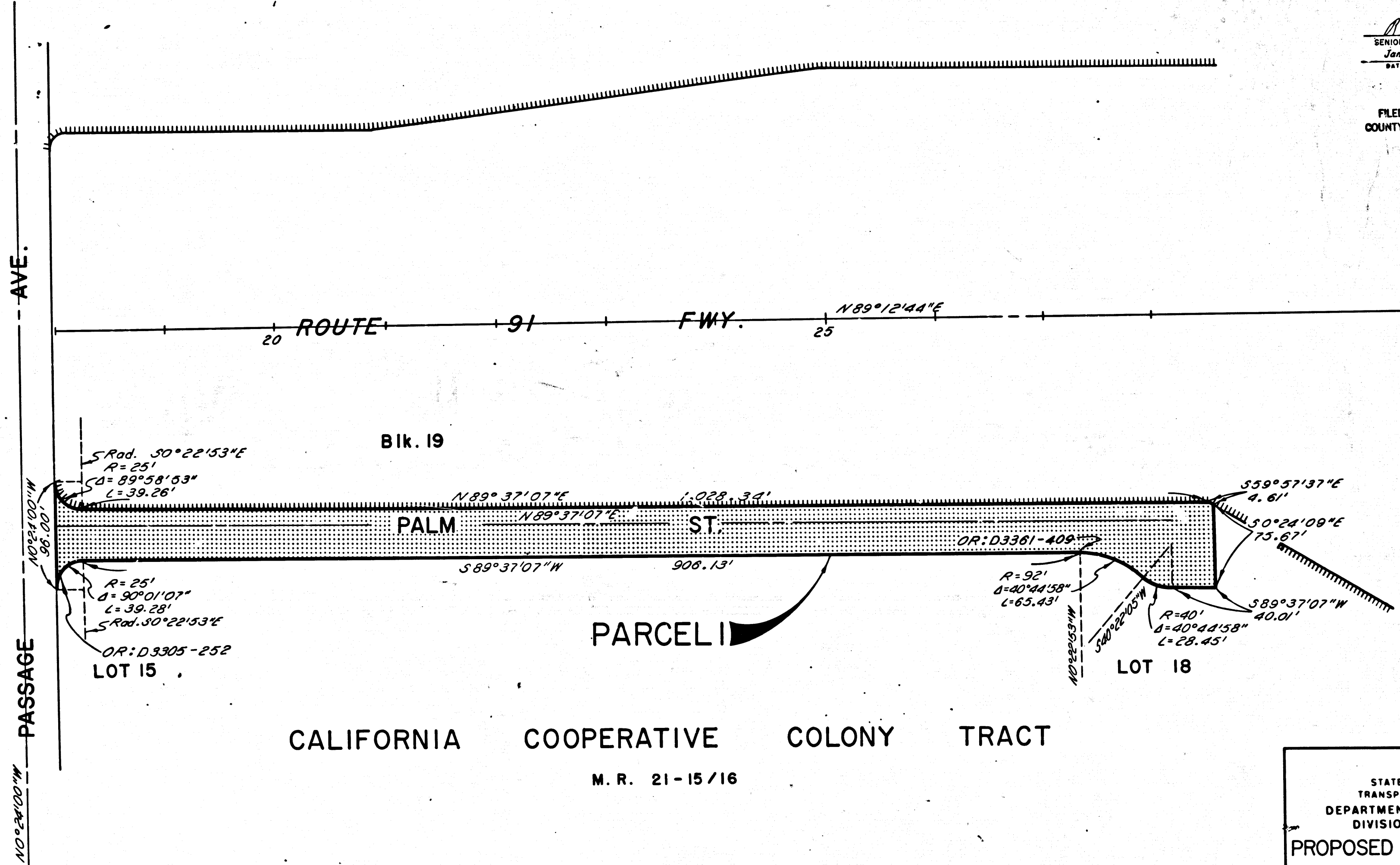
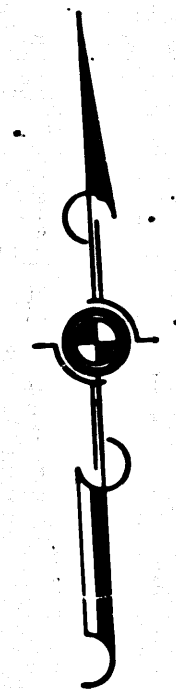
COUNTY ENGINEER'S COPY

DIST	COUNTY	ROUTE	POST MILES	SHEET NO.	TOTAL SHEETS
07	L.A.	91	14.3/16.6	2	9

CITY OF BELLFLOWER

A.W. Felkin
 SENIOR HIGHWAY ENGINEER
 Jan. 22, 1969
 DATE

FILED WITH LOS ANGELES
 COUNTY RECORDER, RAY E. LEE
 FEB 11 1969



STATE OF CALIFORNIA
 TRANSPORTATION AGENCY
 DEPARTMENT OF PUBLIC WORKS
 DIVISION OF HIGHWAYS

PROPOSED RELINQUISHMENT

0 50 100 150 200

AREA TO BE RELINQUISHED SHOWN THUS

ACCESS PROHIBITED

DR'N BY	M.A.C.	R/W MAP NO.	F-1094
C'LG BY	E.J.P.	REF. MAP NO.	177-16
C'K'D BY	G.D.W.	REL- 695	
REVISED			

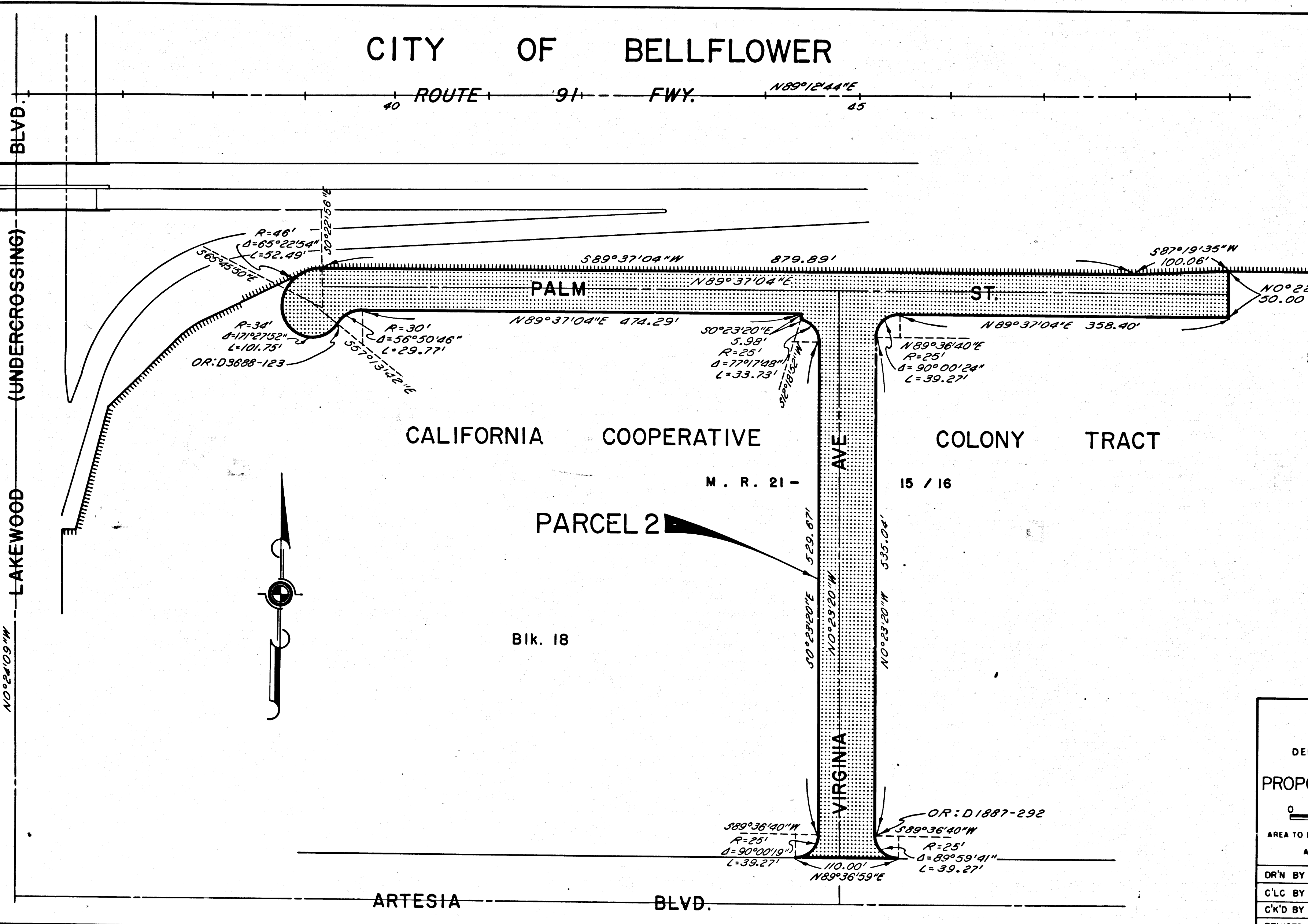
COUNTY ENGINEER'S COPY

DIST	COUNTY	ROUTE	POST MILES	SHEET NO.	TOTAL SHEETS
07	L.A.	91	14.3/16.6	3	9

CITY OF BELLFLOWER

R.W.F.M.
 SENIOR HIGHWAY ENGINEER
 Jan. 22, 1969
 DATE

FILED WITH LOS ANGELES
 COUNTY RECORDER, RAY E. LEE
 FEB 11 1969



STATE OF CALIFORNIA
 TRANSPORTATION AGENCY
 DEPARTMENT OF PUBLIC WORKS
 DIVISION OF HIGHWAYS

PROPOSED RELINQUISHMENT

0 50 100 150 200

AREA TO BE RELINQUISHED SHOWN THUS

ACCESS PROHIBITED

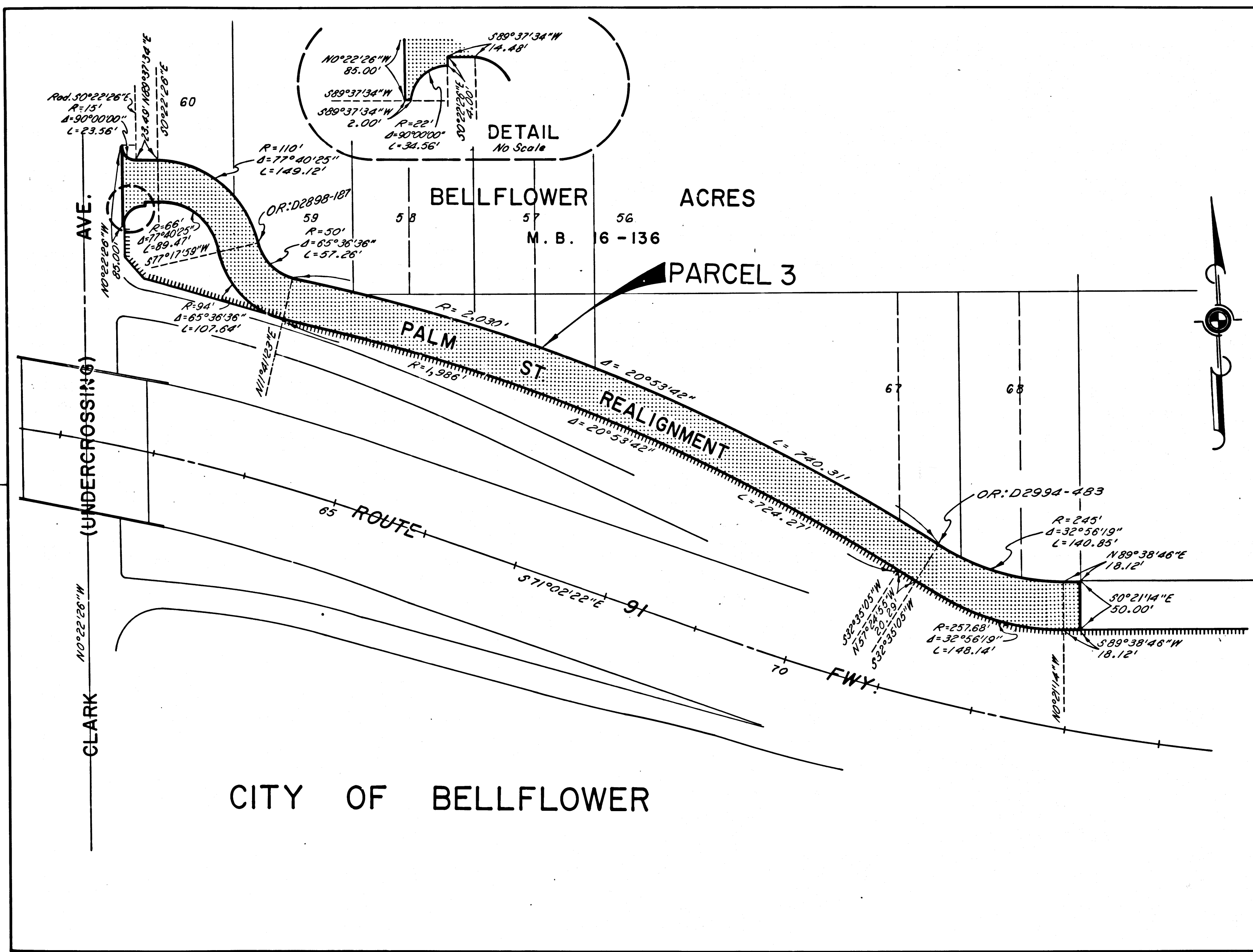
DR'N BY M.A.C.	R/W MAP NO. F-1094
C'LC BY E.J.R.	REF. MAP NO. 177-16
C'K'D BY G.D.W.	REL- 695
REVISED	

COUNTY ENGINEER'S COPY

DIST	COUNTY	ROUTE	POST MILES	SHEET NO.	TOTAL SHEETS
07	L.A.	91	14.3/16.6	4	9

R. W. Felt
 SENIOR HIGHWAY ENGINEER
 Jan. 22, 1969
 DATE

FILED WITH LOS ANGELES
 COUNTY RECORDER, RAY E. LEE
 FEB 11 1969



STATE OF CALIFORNIA
 TRANSPORTATION AGENCY
 DEPARTMENT OF PUBLIC WORKS
 DIVISION OF HIGHWAYS

PROPOSED RELINQUISHMENT

0 50 100 150 200

AREA TO BE RELINQUISHED SHOWN THUS

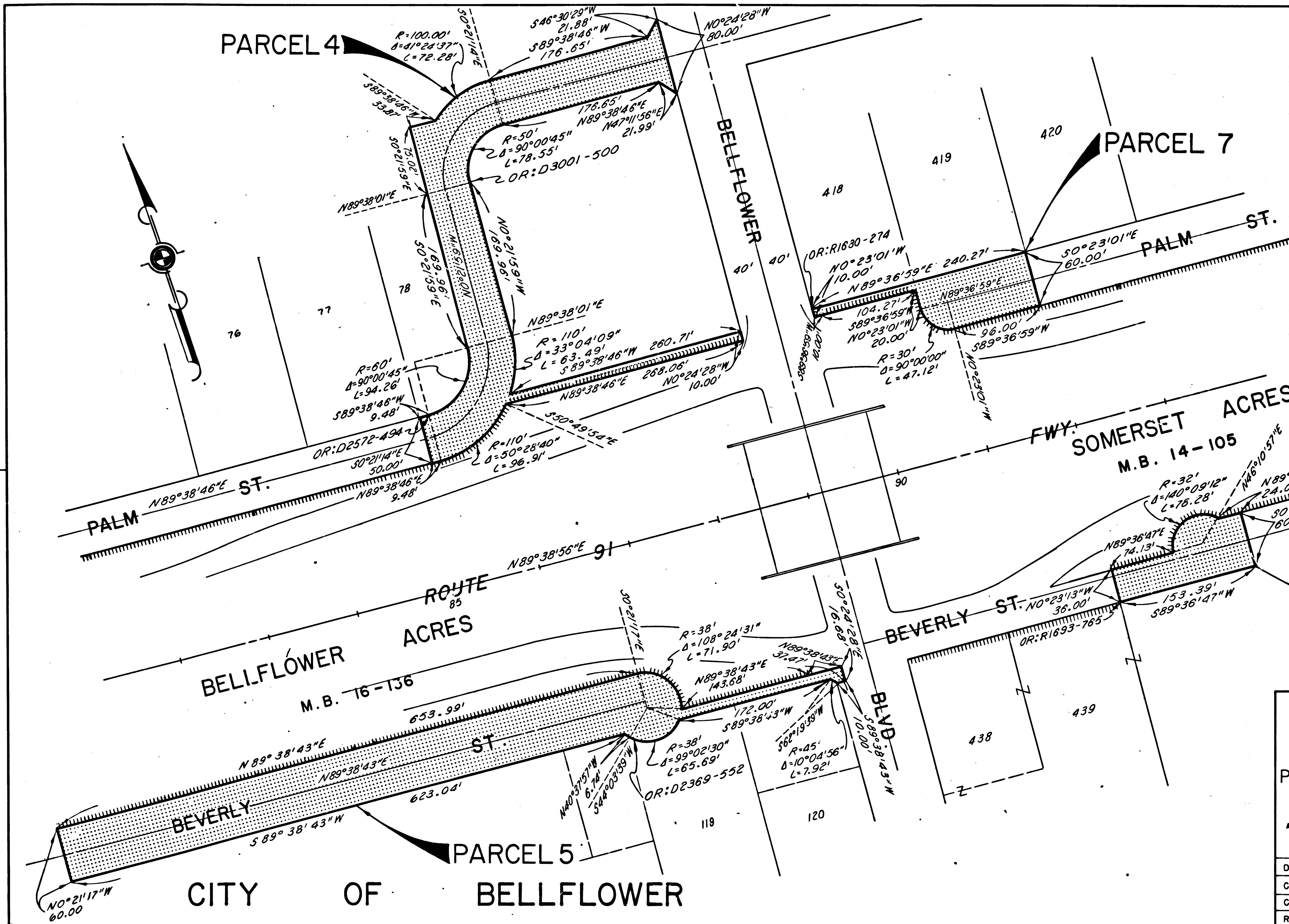
ACCESS PROHIBITED

DR'N BY	M.A.C.	R/W MAP NO.	F1095
C'LC BY	E.J.R.	REF. MAP NO.	177-18
C'K'D BY	G.D.W.	REL-	695
REVISED			

DIST	COUNTY	ROUTE	POST MILES	SHEET NO.	TOTAL SHEETS
07	L.A.	91	14.3/16.8	5	9

R.W. Felt
 SENIOR HIGHWAY ENGINEER
 Jan. 22, 1969
 DATE

FILED WITH LOS ANGELES
 COUNTY RECORDER, RAY E. LEE
 FEB 11 1969



STATE OF CALIFORNIA
 TRANSPORTATION AGENCY
 DEPARTMENT OF PUBLIC WORKS
 DIVISION OF HIGHWAYS

PROPOSED RELINQUISHMENT

0 50 100 150 200

AREA TO BE RELINQUISHED SHOWN THUS

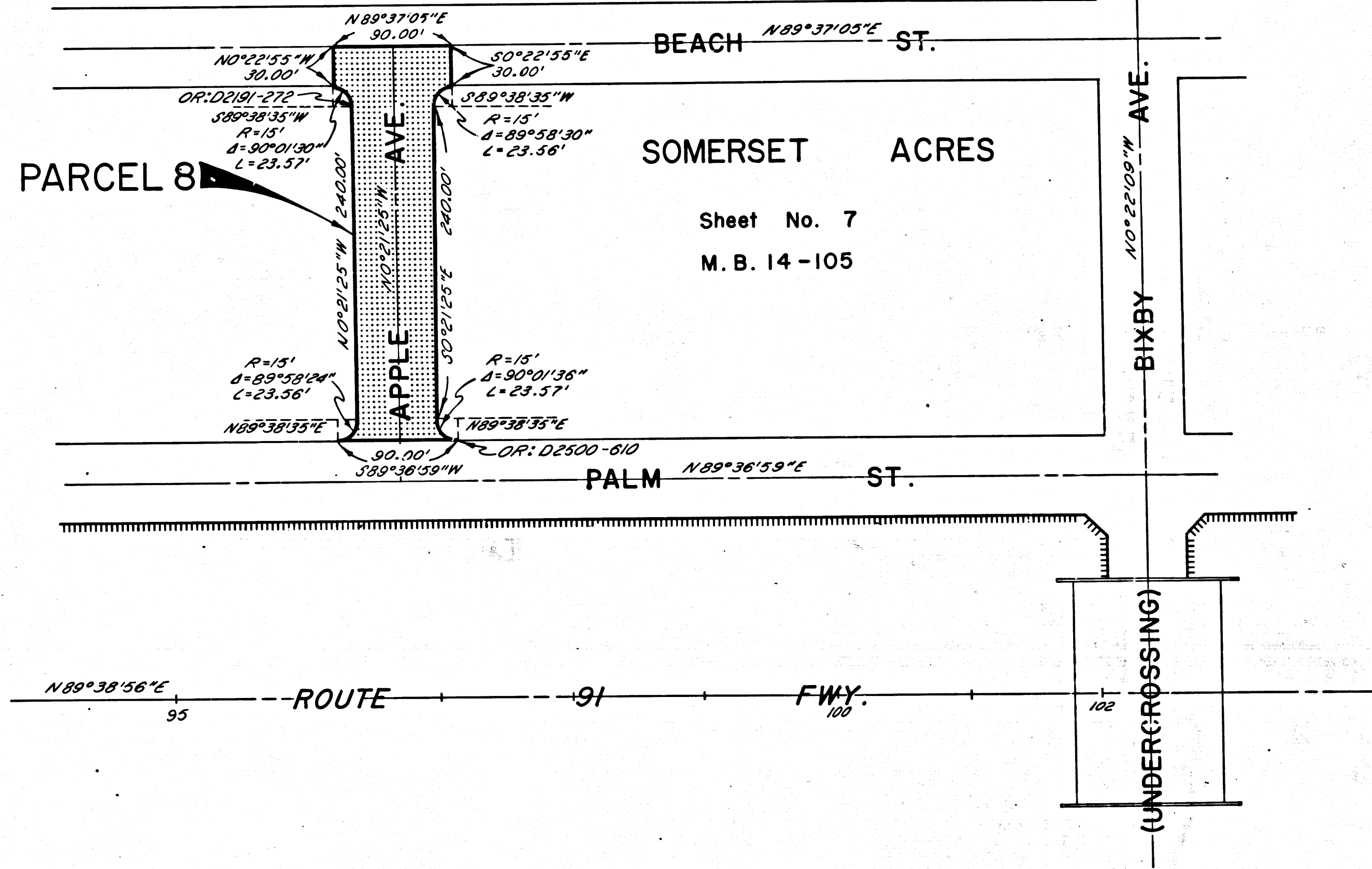
ACCESS PROHIBITED

DR'N BY <i>M.A.C.</i>	R/W MAP NO. <i>F-1094</i>
C'LC BY <i>E.J.R.</i>	REF. MAP NO. <i>177-18</i>
C'KD BY <i>G.D.W.</i>	REL- 695
REVISED <i>12-11-68</i>	

DIST	COUNTY	ROUTE	POST MILES	SHEET NO.	TOTAL SHEETS
07	L.A.	91	14.3/16.6	6	9

R.W. Felt
 SENIOR HIGHWAY ENGINEER
 Jan. 22, 1969
 DATE

FILED WITH LOS ANGELES
 COUNTY RECORDER, RAY E. LEE
 FEB 11 1969



CITY OF BELLFLOWER

STATE OF CALIFORNIA
 TRANSPORTATION AGENCY
 DEPARTMENT OF PUBLIC WORKS
 DIVISION OF HIGHWAYS

PROPOSED RELINQUISHMENT

0 50 100 150 200

AREA TO BE RELINQUISHED SHOWN THUS

ACCESS PROHIBITED

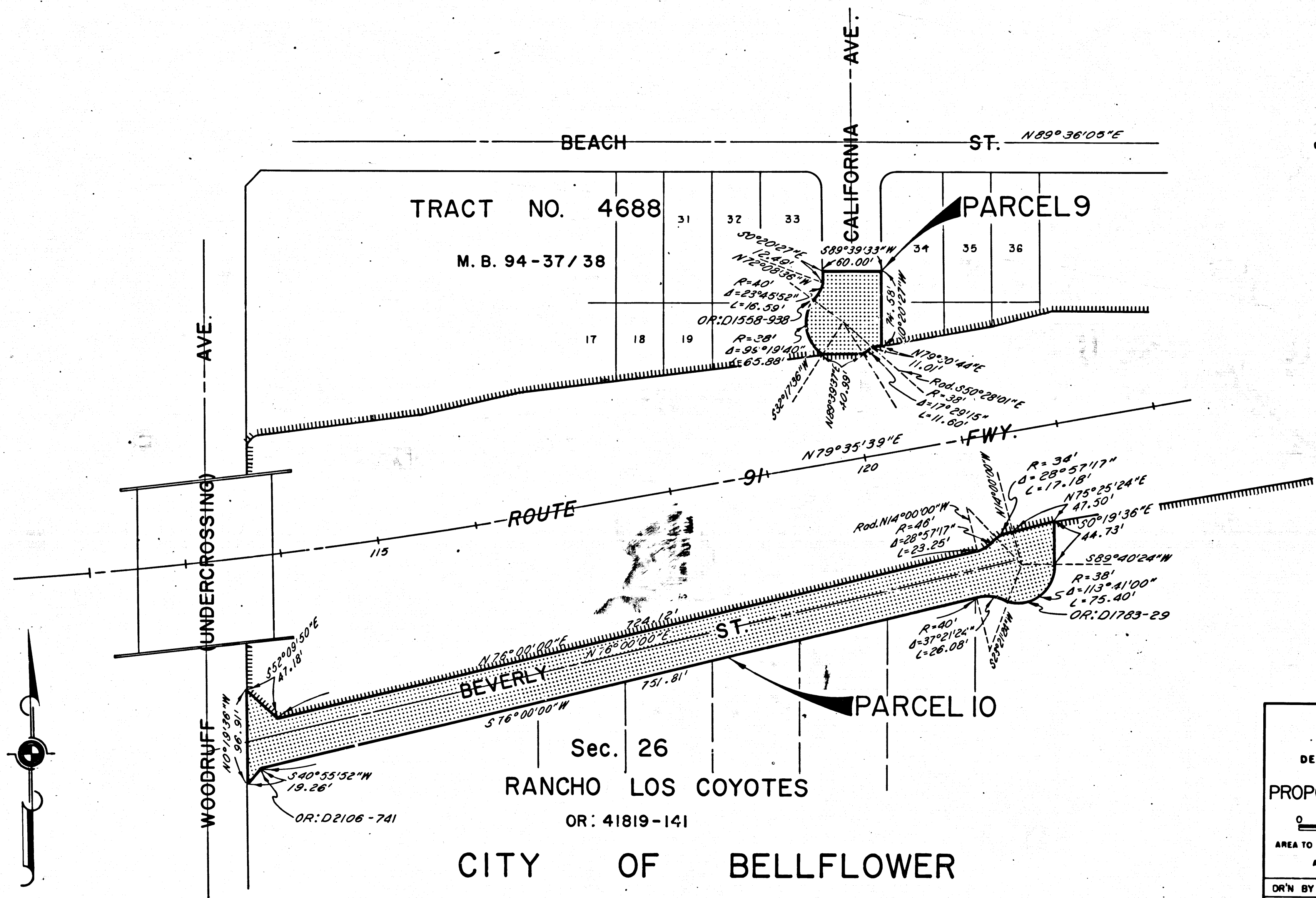
DR'N BY <i>M.A.C.</i>	R/W MAP NO. <i>F-1094</i>
C'LC BY <i>E.J.P.</i>	REF. MAP NO. <i>177-16</i>
C'K'D BY <i>G.D.W.</i>	REL- 695
REVISED	

COUNTY ENGINEER'S COPY

DIST	COUNTY	ROUTE	POST MILES	SHEET NO.	TOTAL SHEETS
07	L.A.	91	14.3/16.6	7	9

R.W. Folmer
 SENIOR HIGHWAY ENGINEER
 Jan 22, 1969
 DATE

FILED WITH LOS ANGELES
 COUNTY RECORDER, RAY E. LEE
 FEB 11 1969



STATE OF CALIFORNIA
 TRANSPORTATION AGENCY
 DEPARTMENT OF PUBLIC WORKS
 DIVISION OF HIGHWAYS

PROPOSED RELINQUISHMENT

0 50 100 150 200

AREA TO BE RELINQUISHED SHOWN THUS

ACCESS PROHIBITED

DR'N BY <i>M.A.C.</i>	R/W MAP NO. <i>F-1095</i>
C'LC BY <i>E.J.R.</i>	REF. MAP NO. <i>177-18</i>
C'K'D BY <i>G.D.W.</i>	REL- 695
REVISED	

COUNTY ENGINEER'S COPY

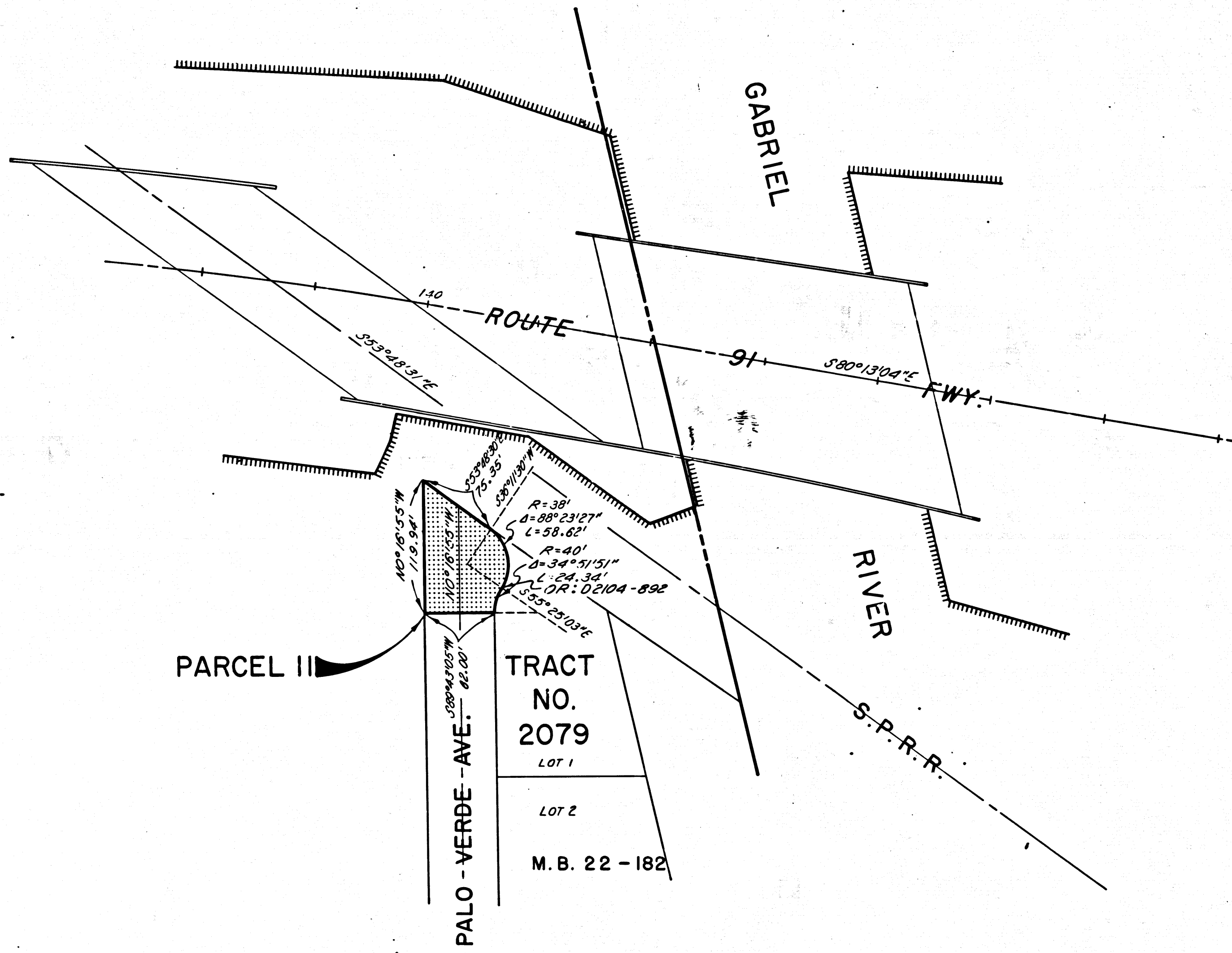
DIST	COUNTY	ROUTE	POST MILES	SHEET NO.	TOTAL SHEETS
07	L.A.	91	14.3/16.6	8	9

CITY OF BELLFLOWER

SAN GABRIEL RIVER

R.W. Smith
 SENIOR HIGHWAY ENGINEER
 Jan. 22, 1969
 DATE

FILED WITH LOS ANGELES
 COUNTY RECORDER, RAY E. LEE
 FEB 11 1969



STATE OF CALIFORNIA
 TRANSPORTATION AGENCY
 DEPARTMENT OF PUBLIC WORKS
 DIVISION OF HIGHWAYS

PROPOSED RELINQUISHMENT

0 50 100 150 200

AREA TO BE RELINQUISHED SHOWN THUS

ACCESS PROHIBITED

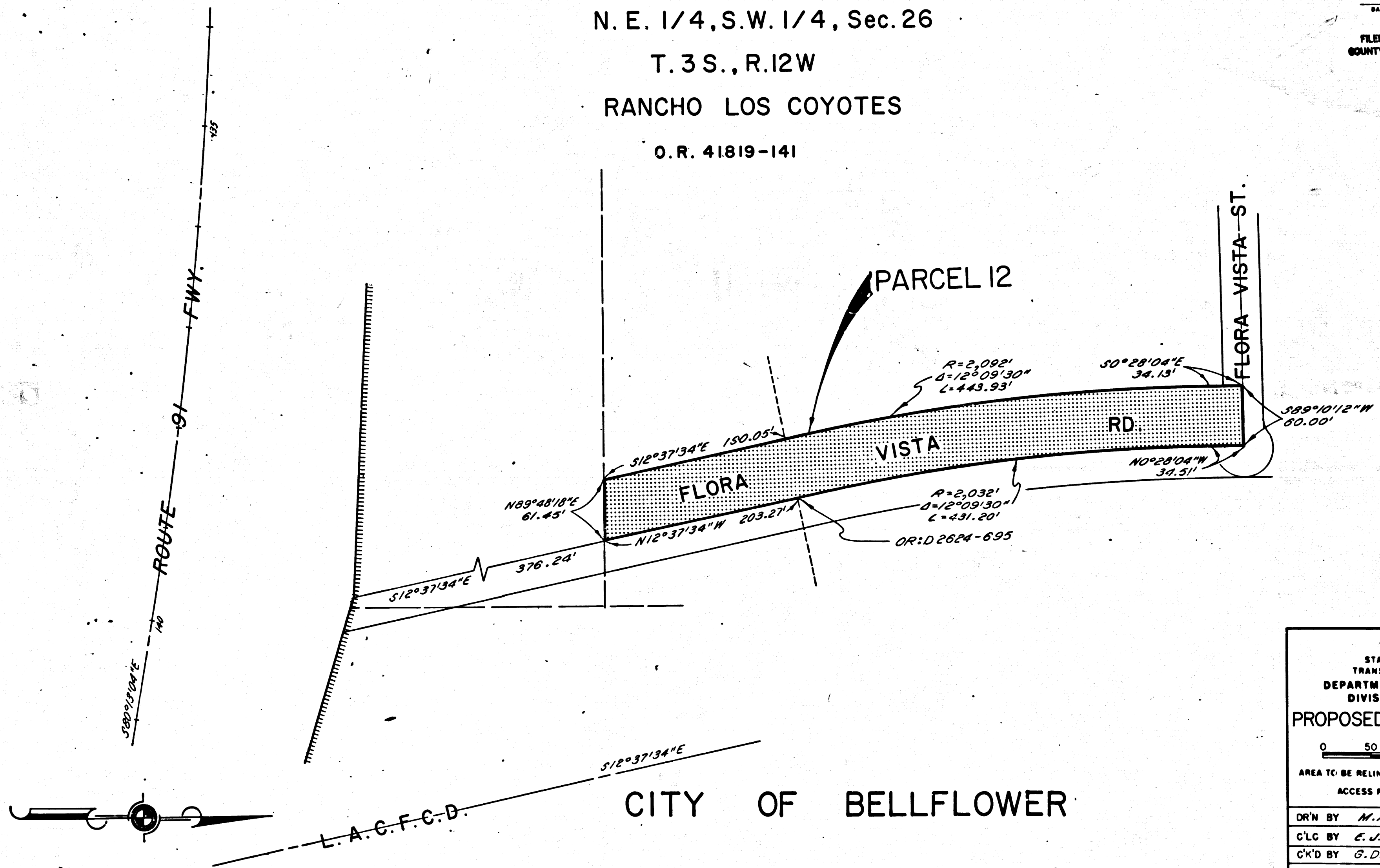
DR'N BY	M.A.C.	R/W MAP NO.	F-1095
C'LC BY	E.J.P.	REF. MAP NO.	177-16
C'K'D BY	G.D.W.	REL-	695
REVISED			

DIST	COUNTY	ROUTE	POST MILES	SHEET NO.	TOTAL SHEETS
07	L.A.	91	14.3/16.6	9	9

B.W.F.H.
 SENIOR HIGHWAY ENGINEER
 Jan. 22, 1969
 DATE

FILED WITH LOS ANGELES
 COUNTY RECORDER, RAY E. LEE
 FEB 11 1969

N. E. 1/4, S.W. 1/4, Sec. 26
 T. 3 S., R. 12 W
 RANCHO LOS COYOTES
 O. R. 41819-141



STATE OF CALIFORNIA
 TRANSPORTATION AGENCY
 DEPARTMENT OF PUBLIC WORKS
 DIVISION OF HIGHWAYS

PROPOSED RELINQUISHMENT

0 50 100 150 200

AREA TO BE RELINQUISHED SHOWN THUS

ACCESS PROHIBITED

DR'N BY	M.A.C.	R/W MAP NO.	F-1095
C'LC BY	E.J.P.	REF. MAP NO.	177-18
C'K'D BY	G.D.W.	REL- 695	
REVISED			