

DIST	COUNTY	ROUTE	POST MILES	SHEET NO.	TOTAL SHEETS
07	L.A.	91	14.5/16.7	1	1

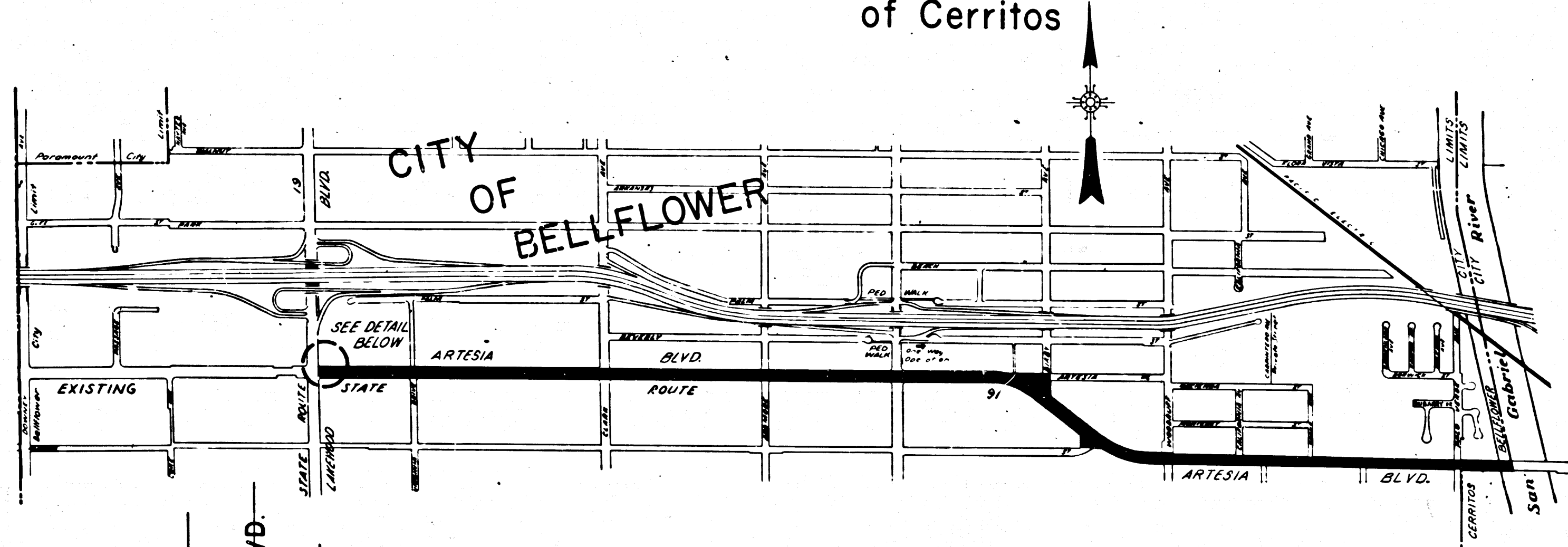
STATE OF CALIFORNIA
 TRANSPORTATION AGENCY
 DEPARTMENT OF PUBLIC WORKS
 DIVISION OF HIGHWAYS

C.W. King
 DEPUTY DISTRICT ENGINEER
 February 10, 1969
 DATE

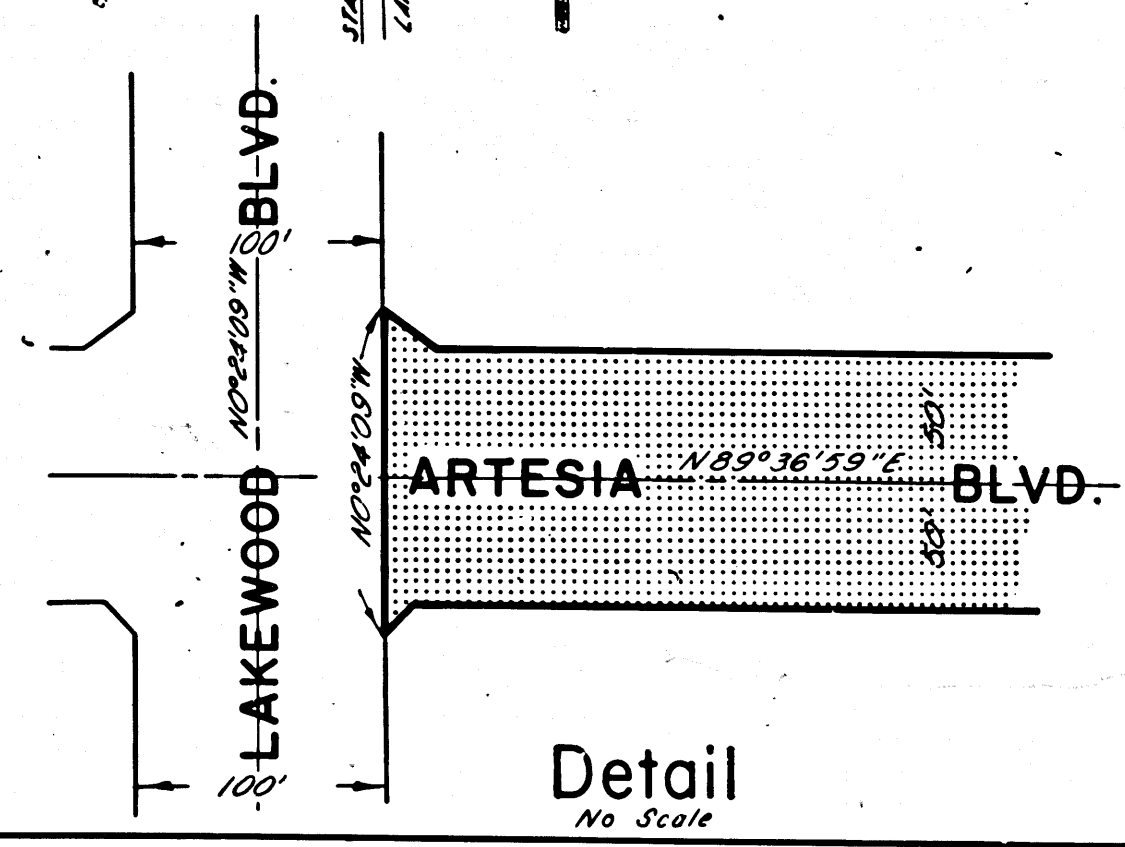
RIGHT OF WAY MAPS OF
STATE HIGHWAY
 In the City of Bellflower on Artesia Blvd.
 between Lakewood Blvd. and the West City Limit
 of Cerritos

4362

FILED
 AT REQUEST OF
 DEPT. OF PUBLIC WORKS
 FEB. 13, 1969
 458 PM
 12 PM
 7
 75
 OF STATE HIGHWAY MAPS
 LOS ANGELES COUNTY, CALIF.
 RAY E. AEE
 COUNTY RECORDER
 Deputy *Free*



CITY OF
 CERRITOS



STATE OF CALIFORNIA
 TRANSPORTATION AGENCY
 DEPARTMENT OF PUBLIC WORKS
 DIVISION OF HIGHWAYS

PROPOSED RELINQUISHMENT

SCALE
 0 600 1200 1800 2400

DR'N BY	M. A. C.	R/W MAP NO.	F-1094
C'LC BY	G. D. W.	REF. MAP NO.	
C'K'D BY	G. D. W.	REL-	710
REVISED			

COUNTY ENGINEER'S COPY

1247

715