

DIST	COUNTY	ROUTE	POST MILES	SHEET NO.	TOTAL SHEETS
07	L.A.	210	37.5/40.3	1	2

STATE OF CALIFORNIA
 TRANSPORTATION AGENCY
 DEPARTMENT OF PUBLIC WORKS
 DIVISION OF HIGHWAYS

Curtis
 DEPUTY DISTRICT ENGINEER
 February 10, 1969
 DATE

RIGHT OF WAY MAPS OF
STATE HIGHWAY

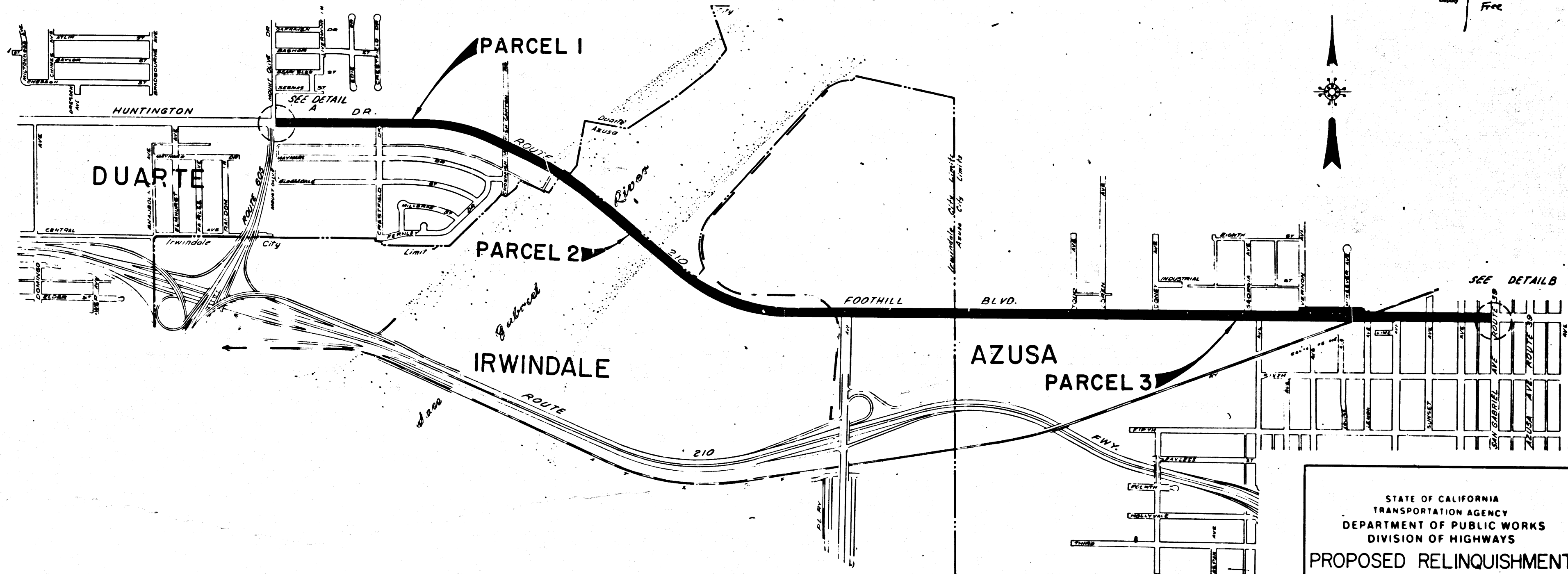
In the County of Los Angeles on Huntington Dr. and
 Foothill Blvd. between Mt. Olive Dr. and San Gabriel Ave.

4363

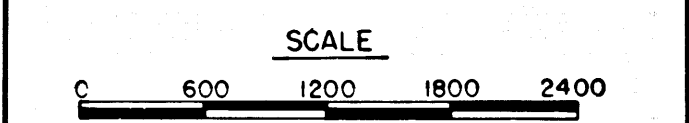
FILED
 AT REQUEST OF
 DEPT. OF PUBLIC WORKS
 FEB. 13, 1969
 4:55 PM, 12 PM.

IN BOOK 7
 AT PAGE 76
 OF STATE HIGHWAY MAPS
 LOS ANGELES COUNTY, CALIF.
 RAY E. LEE
 COUNTY RECORDER

Duly Free



STATE OF CALIFORNIA
 TRANSPORTATION AGENCY
 DEPARTMENT OF PUBLIC WORKS
 DIVISION OF HIGHWAYS
PROPOSED RELINQUISHMENT



DR'N BY <i>M.A.C.</i>	R/W MAP NO. <i>P21852</i>
C'LG BY <i>S.D.W.</i>	REF. MAP NO.
C'K'D BY	REL-704,705,
REVISED	706

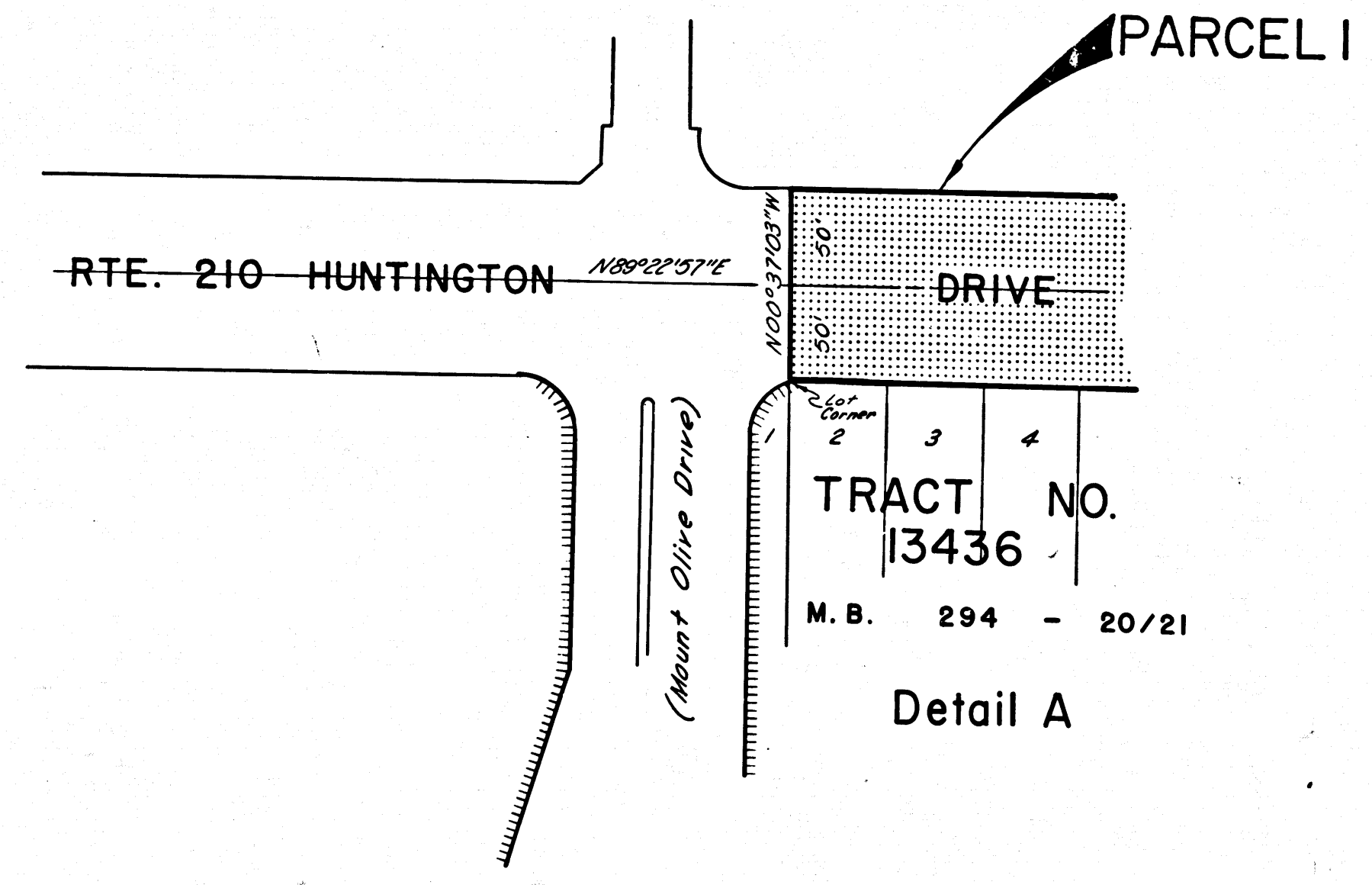
COUNTY ENGINEER'S COPY

7/76

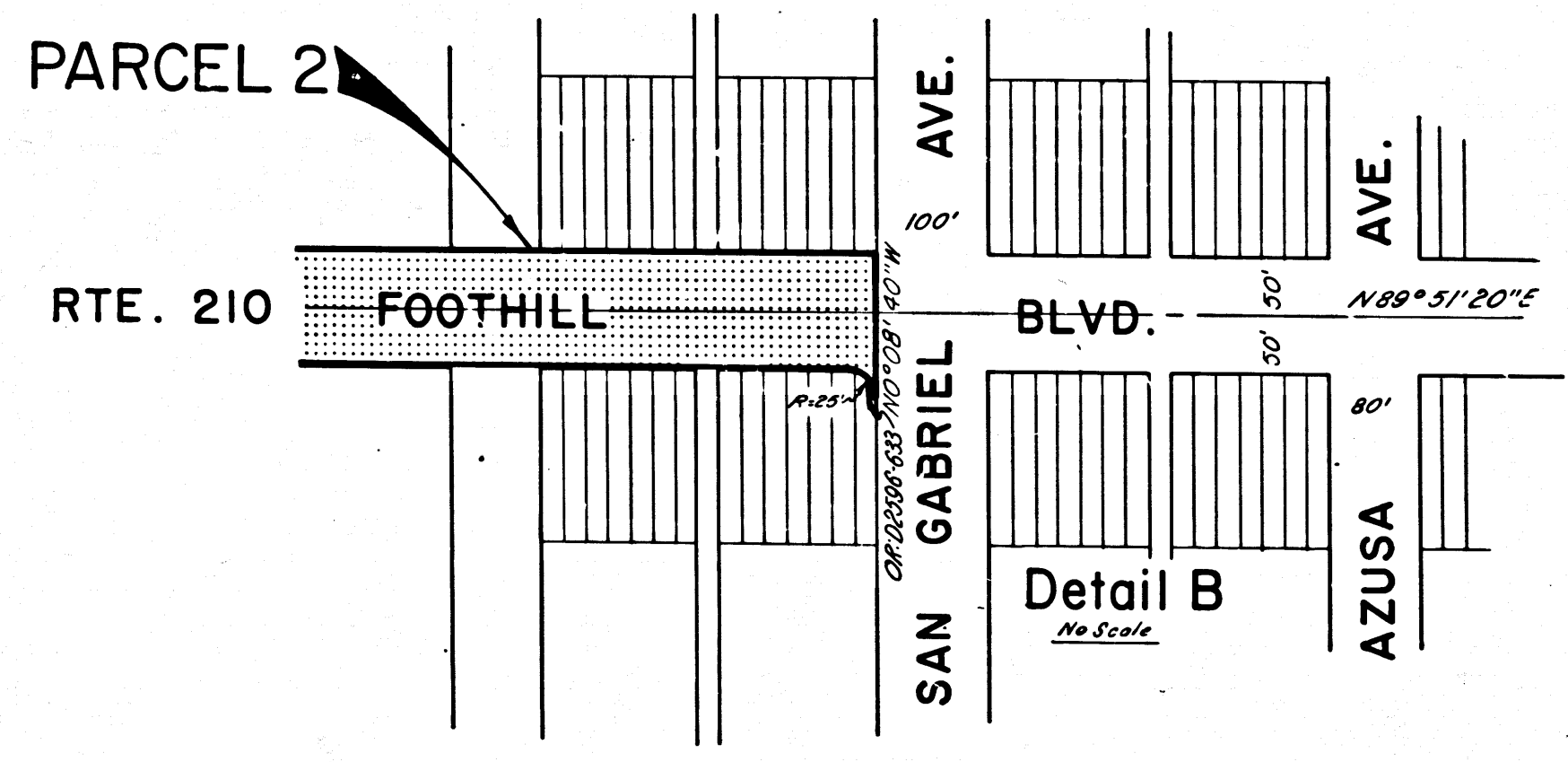
DIST	COUNTY	ROUTE	POST MILES	SHEET NO.	TOTAL SHEETS
07	L.A.	210	37.5/40.3	2	2

B.W. Felkin
 SENIOR HIGHWAY ENGINEER
 February 10, 1969
 DATE

FILED WITH LOS ANGELES
 COUNTY RECORDER, RAY E. LEE
 FEB 18 1969



TRACT NO.
 13436
 M. B. 294 - 20/21
 Detail A



Detail B
 No Scale

STATE OF CALIFORNIA
 TRANSPORTATION AGENCY
 DEPARTMENT OF PUBLIC WORKS
 DIVISION OF HIGHWAYS

PROPOSED RELINQUISHMENT

0 50 100 150 200

AREA TO BE RELINQUISHED SHOWN THUS

ACCESS PROHIBITED

DR'N BY	M.A.C.	R/W MAP NO.	P-1052 F-1972
C'LC BY	G.D.W.	REF. MAP NO.	
C'K'D BY		REL-704,705,	
REVISED		706	

COUNTY ENGINEER'S COPY