

DIST	COUNTY	ROUTE	POST MILES	SHEET NO.	TOTAL SHEETS
07	LA	5	55.5/59.8	1	9

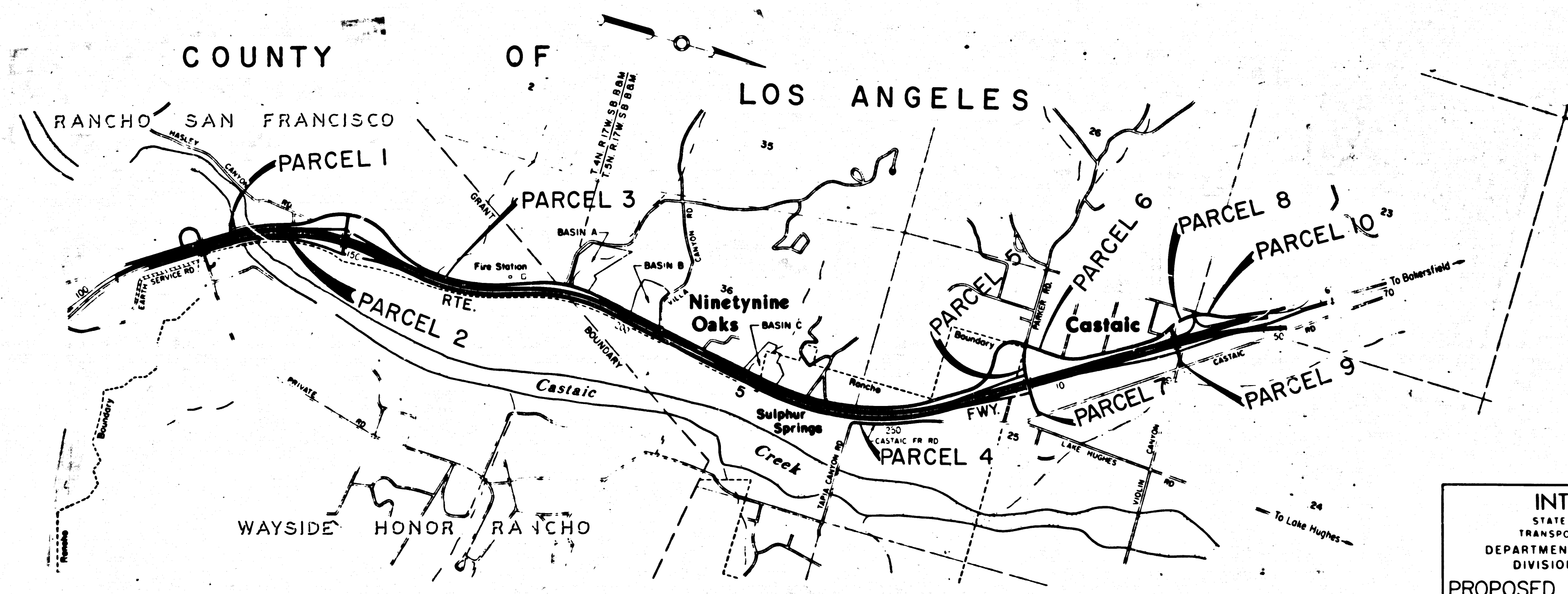
STATE OF CALIFORNIA
 TRANSPORTATION AGENCY
 DEPARTMENT OF PUBLIC WORKS
 DIVISION OF HIGHWAYS

Ray E. Lee
 DEPUTY DISTRICT ENGINEER
 February 20, 1969
 DATE

RIGHT OF WAY MAPS OF
 STATE HIGHWAY

In Los Angeles County between 0.4 mile south of
 Castaic Creek and 0.8 mile north of Parker Road near Castaic

2479
 FILED
 AT REQUEST OF
 DEPT. OF PUBLIC WORKS
 FEB. 25, 1969
 2:25 PM.
 IN BOOK 7
 AT PAGE 78
 OF STATE HIGHWAY MAPS
 LOS ANGELES COUNTY, CALIF.
 RAY E. LEE
 COUNTY ENGINEER
Ray E. Lee
 Deputy
 Free



INTERSTATE
 STATE OF CALIFORNIA
 TRANSPORTATION AGENCY
 DEPARTMENT OF PUBLIC WORKS
 DIVISION OF HIGHWAYS
 PROPOSED RELINQUISHMENT

SCALE
 0 500 1000 1500 2000

DR'N BY .. S.	R/W MAP NO.
C'LC BY M.M.	REF MAP NO.
C'K'D BY G.H.	REL-680
REVISED	

COUNTY ENGINEER'S COPY

DIST	COUNTY	ROUTE	POST MILES	SHEET NO.	TOTAL SHEETS
07	LA	5	55.5/59.8	2	9

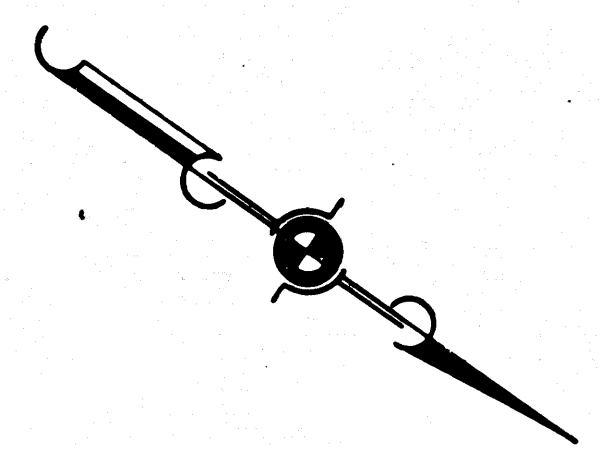
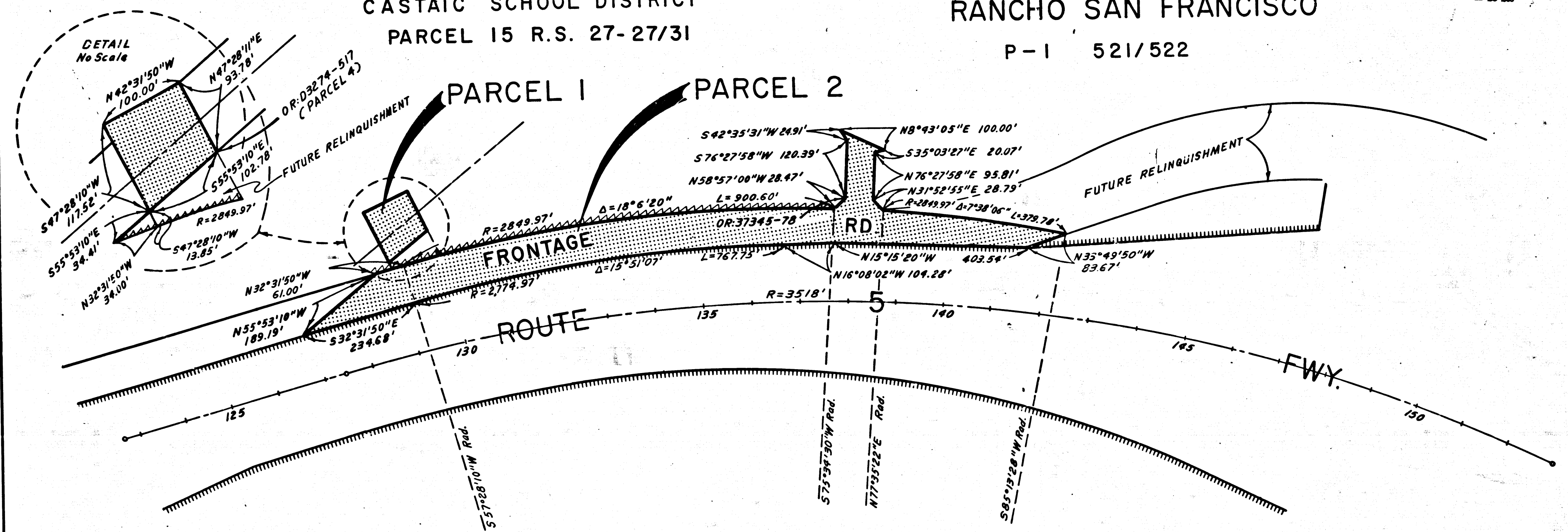
COUNTY OF LOS ANGELES

CASTAIC SCHOOL DISTRICT
PARCEL 15 R.S. 27-27/31

RANCHO SAN FRANCISCO
P-1 521/522

B.W. Williams
SEAL
REGISTERED ENGINEER
February 20, 1969
DATE

FILED WITH LOS ANGELES
COUNTY RECORDER, RAY E. LEZ
FEB 26 1969



INTERSTATE
STATE OF CALIFORNIA
TRANSPORTATION AGENCY
DEPARTMENT OF PUBLIC WORKS
DIVISION OF HIGHWAYS

PROPOSED RELINQUISHMENT

0 100 200 300 400

AREA TO BE RELINQUISHED SHOWN THUS

ACCESS PROHIBITED

RELINQUISH ACCESS RIGHTS

DR'N BY	L. S.	R/W MAP NO.	F-1310
C'LC BY	M. M.	REF. MAP NO.	
C'K'D BY	G. H.		
REVISED			

REL-680

COUNTY ENGINEER'S COPY

DIST	COUNTY	ROUTE	POST MILES	SHEET NO.	TOTAL SHEETS
07	LA	5	55.5/59.8	3	9

COUNTY OF LOS ANGELES

R. W. Fells
 SENIOR HIGHWAY ENGINEER
 February 20, 1969
 DATE

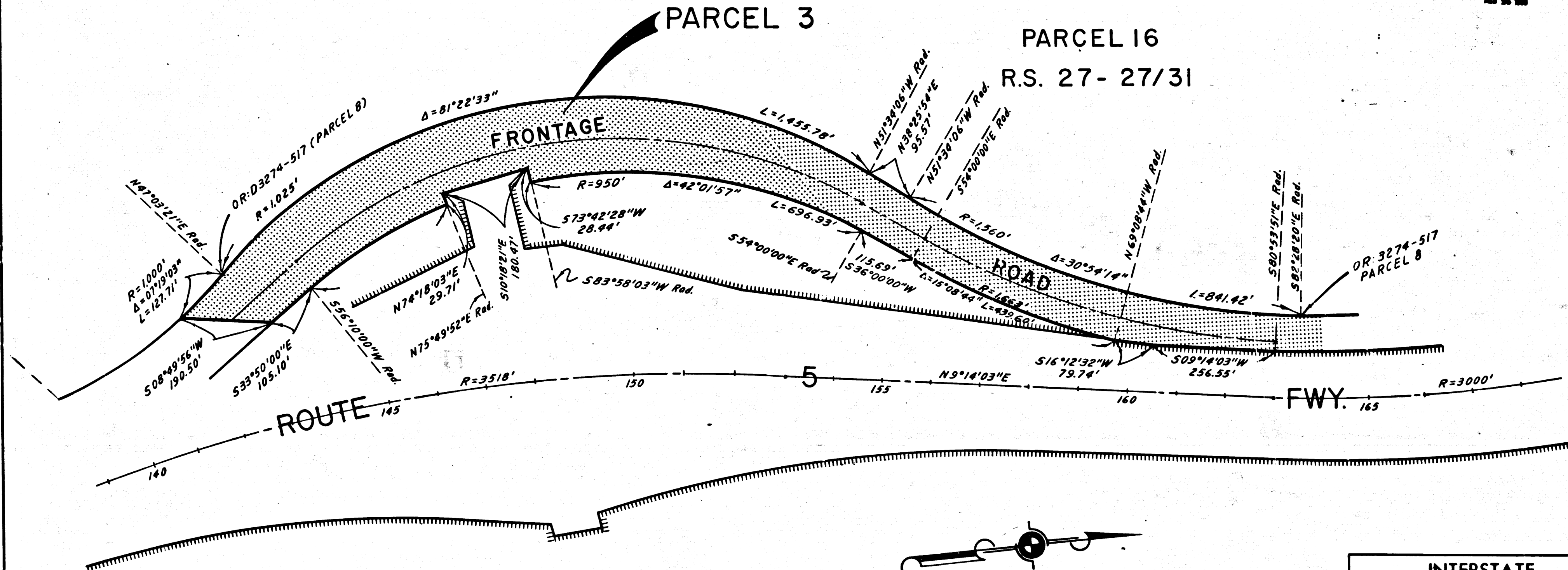
CASTAIC SCHOOL DISTRICT

FILED WITH LOS ANGELES
 COUNTY RECORDER, RAY E. LEE
 FEB 26 1969

PARCEL 16

R.S. 27- 27/31

PARCEL 3



RANCHO SAN FRANCISCO

INTERSTATE
 STATE OF CALIFORNIA
 TRANSPORTATION AGENCY
 DEPARTMENT OF PUBLIC WORKS
 DIVISION OF HIGHWAYS

PROPOSED RELINQUISHMENT

0 100 200 300 400

AREA TO BE RELINQUISHED SHOWN THUS

ACCESS PROHIBITED

DR'N BY	L. S.	R/W MAP NO.	F-1310
C'LC BY	M. M.	REF. MAP NO.	
C'K'D BY	G. H.	REL-	680
REVISED			

COUNTY ENGINEER'S COPY

FILED WITH LOS ANGELES
COUNTY RECORDER, RAY E. LEE
FEB 25 1969

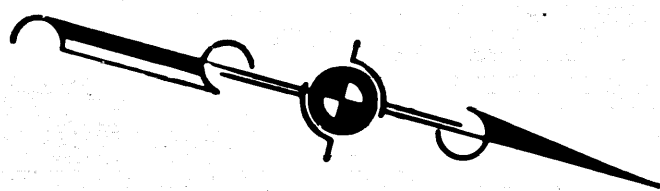
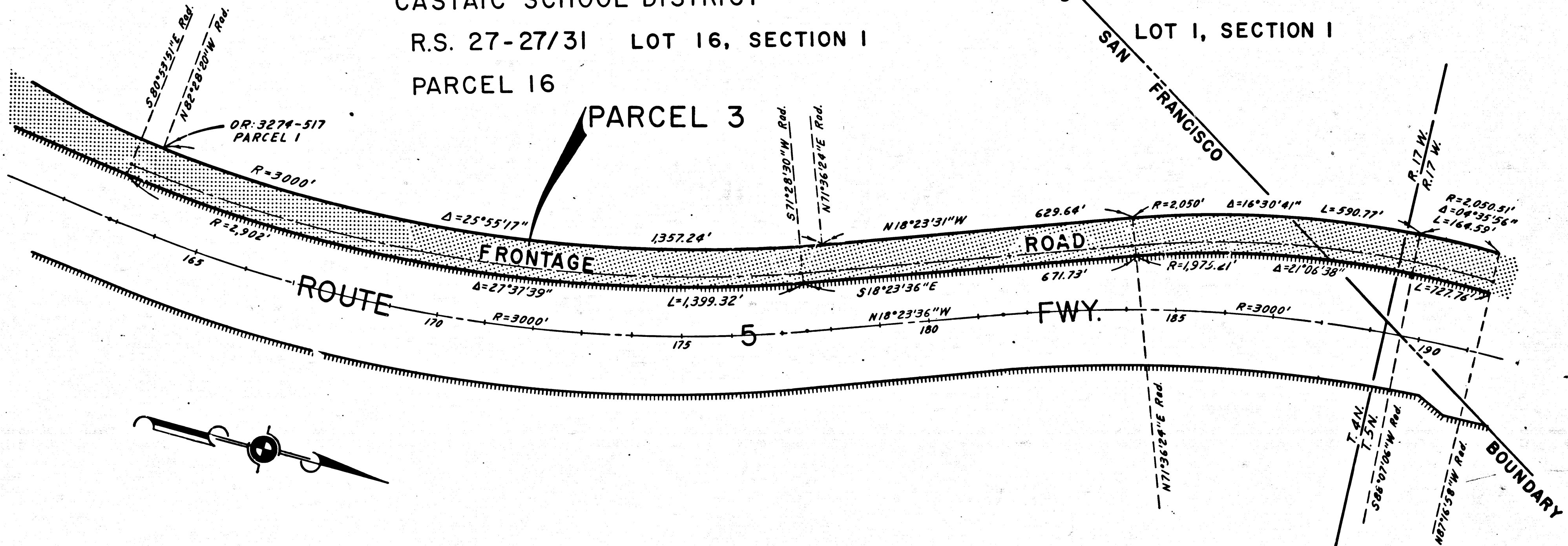
DIST	COUNTY	ROUTE	POST MILES	SHEET NO.	TOTAL SHEETS
07	LA	5	33.5/33.8	4	9

R.W. Felt
SENIOR HIGHWAY ENGINEER
February 20, 1969
DATE

C O U N T Y O F L O S A N G E L E S

CASTAIC SCHOOL DISTRICT
R.S. 27-27/31 LOT 16, SECTION 1
PARCEL 16

RANCHO SAN FRANCISCO
LOT 1, SECTION 1



R A N C H O S A N F R A N C I S C O

INTERSTATE
STATE OF CALIFORNIA
TRANSPORTATION AGENCY
DEPARTMENT OF PUBLIC WORKS
DIVISION OF HIGHWAYS

PROPOSED RELINQUISHMENT

0 100 200 300 400

AREA TO BE RELINQUISHED SHOWN THUS

ACCESS PROHIBITED

DR'N BY	L. S.	R/W MAP NO.	F-1310
C'LC BY	M. M.	REF. MAP NO.	
C'K'D BY	G. H.		
REVISED			

REL-680

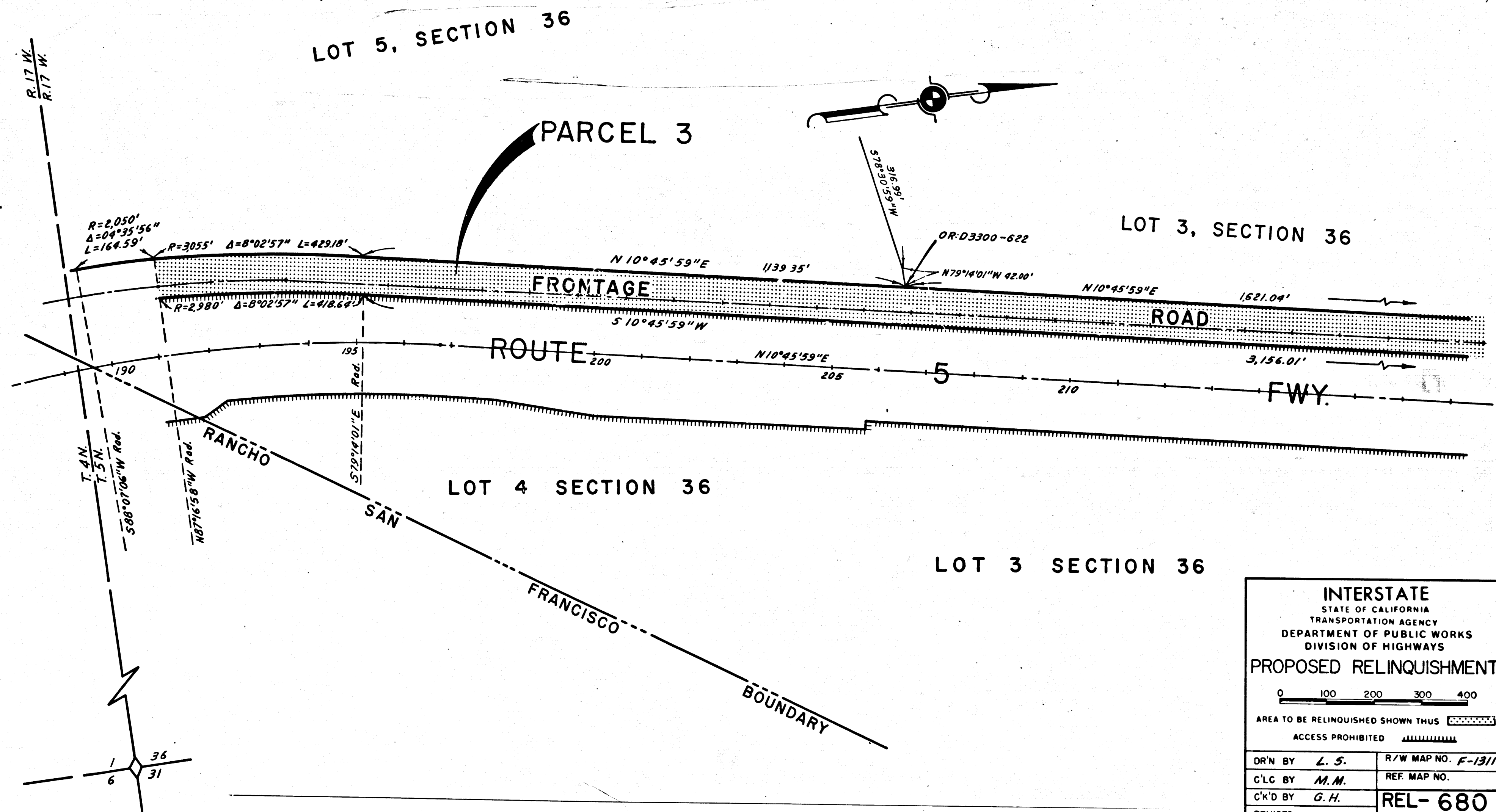
COUNTY ENGINEER'S COPY

FILED WITH LOS ANGELES
COUNTY RECORDER, RAY E. LEE
FEB 25 1969

DIST	COUNTY	ROUTE	POST MILES	SHEET NO.	TOTAL SHEETS
07	LA	5	55.5/59.8	5	9

R.W. Felt
SENIOR HIGHWAY ENGINEER
February 20, 1969
DATE

COUNTY OF LOS ANGELES



INTERSTATE
STATE OF CALIFORNIA
TRANSPORTATION AGENCY
DEPARTMENT OF PUBLIC WORKS
DIVISION OF HIGHWAYS

PROPOSED RELINQUISHMENT

0 100 200 300 400

AREA TO BE RELINQUISHED SHOWN THUS [Dotted Pattern]

ACCESS PROHIBITED [Hatched Pattern]

DR'N BY	L. S.	R/W MAP NO.	F-1311
C'LC BY	M.M.	REF. MAP NO.	
C'K'D BY	G.H.	REL-	680
REVISED			

COUNTY ENGINEER'S COPY

FILED WITH LOS ANGELES COUNTY RECORDER, RAY E. LEE

FEB 20 1969

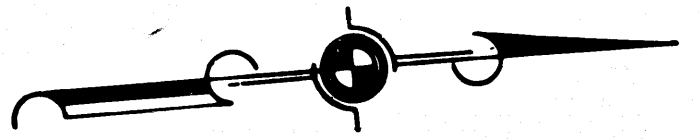
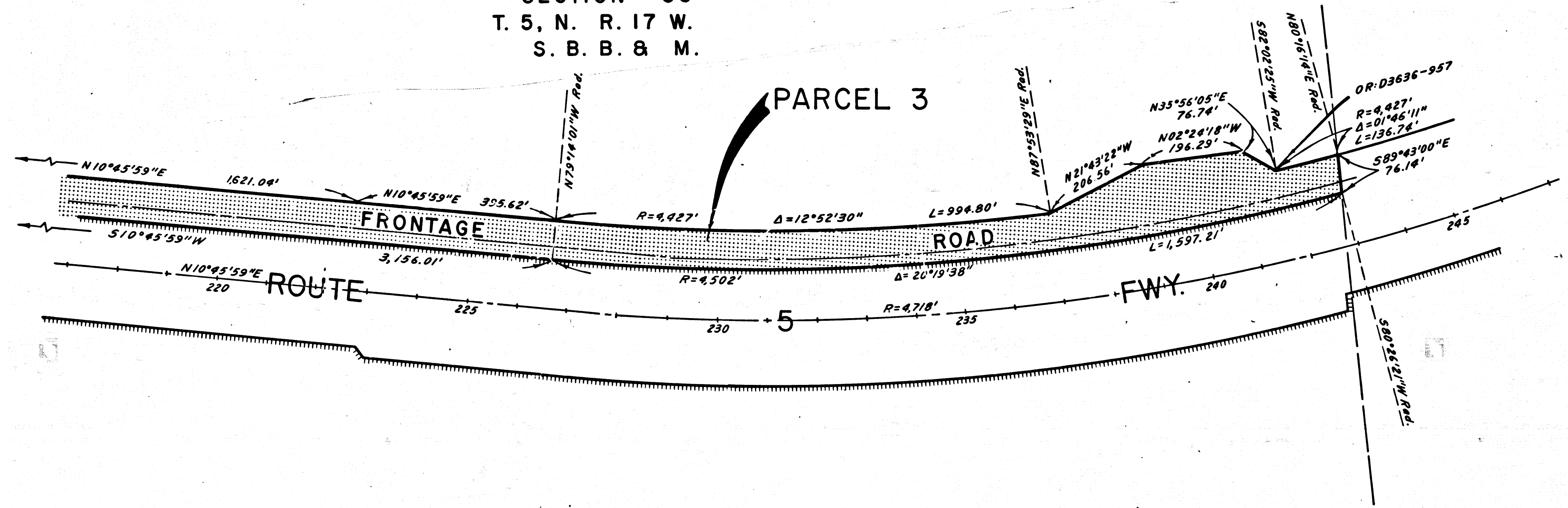
DIST	COUNTY	ROUTE	POST MILES	SHEET NO.	TOTAL SHEETS
07	LA	5	55.5/59.8	6	9

C O U N T Y O F L O S A N G E L E S

R.W. Falk
 SENIOR HIGHWAY ENGINEER
 February 20, 1969
 DATE

SECTION 36
 T. 5, N. R. 17 W.
 S. B. B. & M.

PARCEL 3



INTERSTATE
 STATE OF CALIFORNIA
 TRANSPORTATION AGENCY
 DEPARTMENT OF PUBLIC WORKS
 DIVISION OF HIGHWAYS

PROPOSED RELINQUISHMENT

0 100 200 300 400

AREA TO BE RELINQUISHED SHOWN THUS

ACCESS PROHIBITED

DR'N BY L. S.	R/W MAP NO. F-1311
C'LC BY M. M.	REF. MAP NO.
C'K'D BY G. H.	REL-680
REVISED	

COUNTY ENGINEER'S COPY

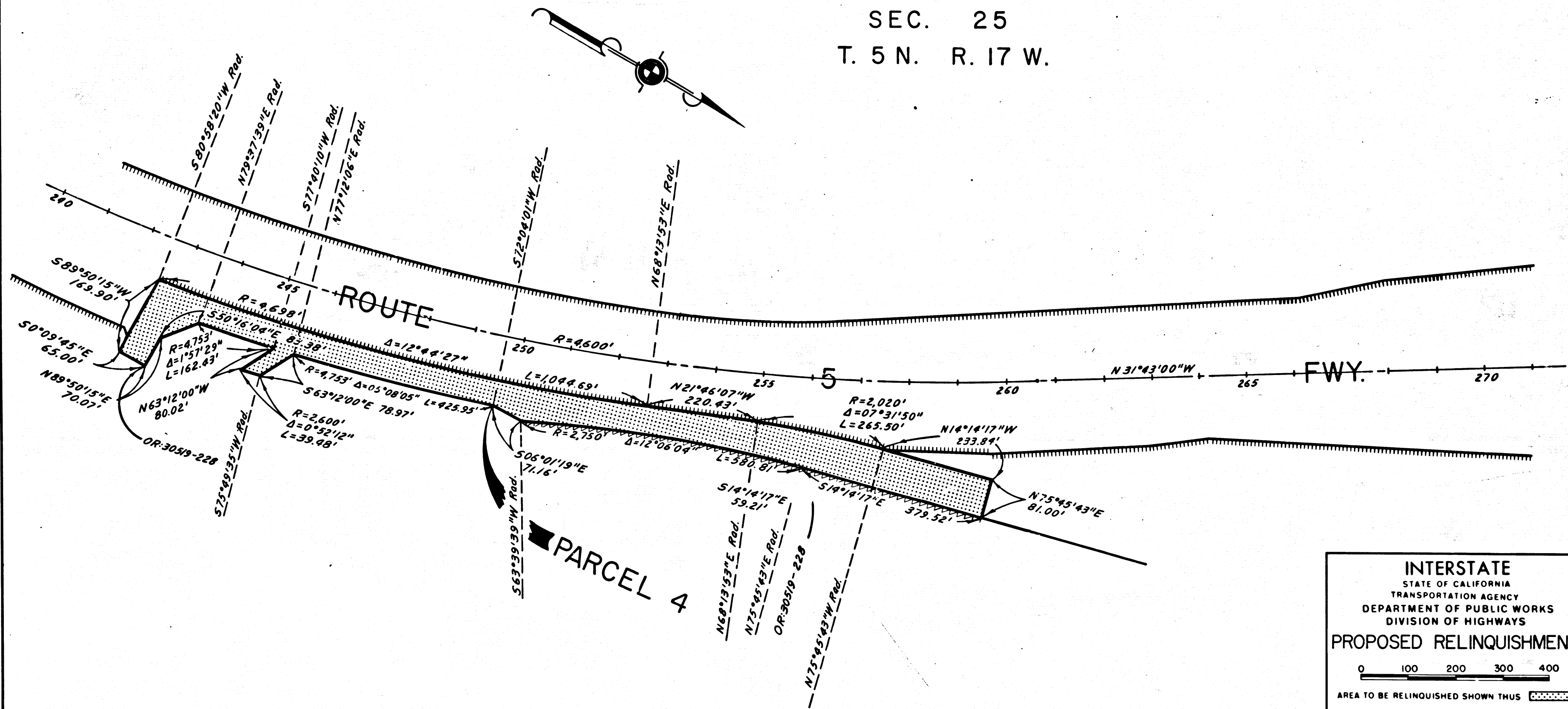
FILED WITH LOS ANGELES
COUNTY RECORDER, RAY E. LEE
FEB 25 1969

DIST	COUNTY	ROUTE	POST MILES	SHEET NO.	TOTAL SHEETS
07	LA	5	55.5/59.8	7	9

COUNTY OF LOS ANGELES

R.W. Fisher
SENIOR HIGHWAY ENGINEER
February 20, 1969
DATE

SEC. 25
T. 5 N. R. 17 W.



INTERSTATE
STATE OF CALIFORNIA
TRANSPORTATION AGENCY
DEPARTMENT OF PUBLIC WORKS
DIVISION OF HIGHWAYS

PROPOSED RELINQUISHMENT

0 100 200 300 400

AREA TO BE RELINQUISHED SHOWN THUS

ACCESS PROHIBITED

RELINQUISH ACCESS RIGHTS

DR'N BY	L. S.	R/W MAP NO.	F-1312
C'LC BY	M. M.	REF MAP NO.	
C'K'D BY	G. H.	REL-680	
REVISED			

COUNTY ENGINEER'S COPY

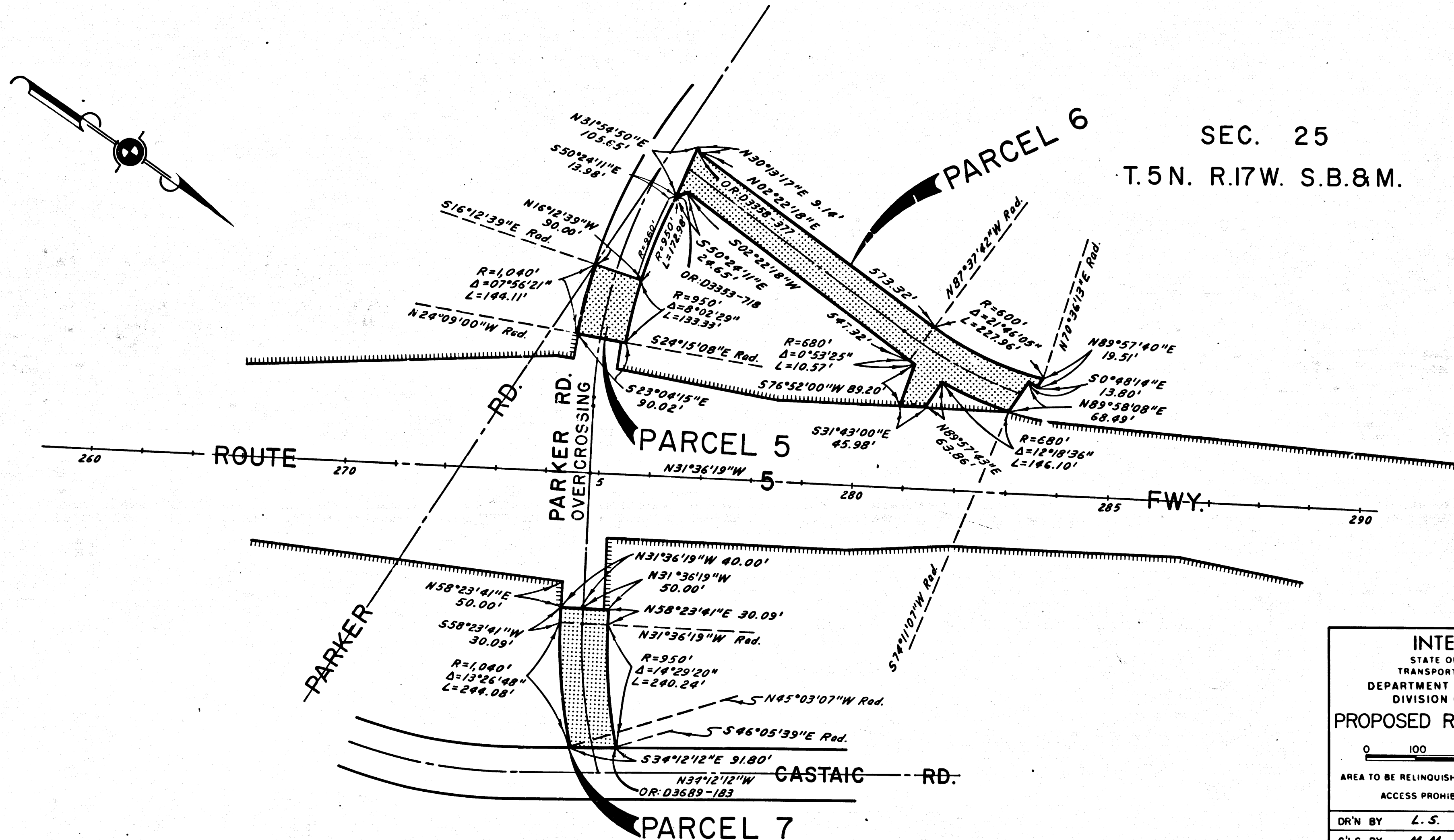
FILED WITH LOS ANGELES
COUNTY RECORDER, RAY E. LEE
888 25 100

DIST	COUNTY	ROUTE	POST MILES	SHEET NO.	TOTAL SHEETS
07	LA	5	55.5/59.8	8	9

COUNTY OF LOS ANGELES

R.W. Walker
SENIOR HIGHWAY ENGINEER
February 20, 1969
DATE

SEC. 25
T.5N. R.17W. S.B.&M.



INTERSTATE
STATE OF CALIFORNIA
TRANSPORTATION AGENCY
DEPARTMENT OF PUBLIC WORKS
DIVISION OF HIGHWAYS

PROPOSED RELINQUISHMENT

0 100 200 300 400

AREA TO BE RELINQUISHED SHOWN THUS

ACCESS PROHIBITED

DR'N BY	L. S.	R/W MAP NO.	F-1312
C'LC BY	M. M.	REF. MAP NO.	
C'K'D BY	G. H.	REL-680	
REVISED			

COUNTY ENGINEER'S COPY

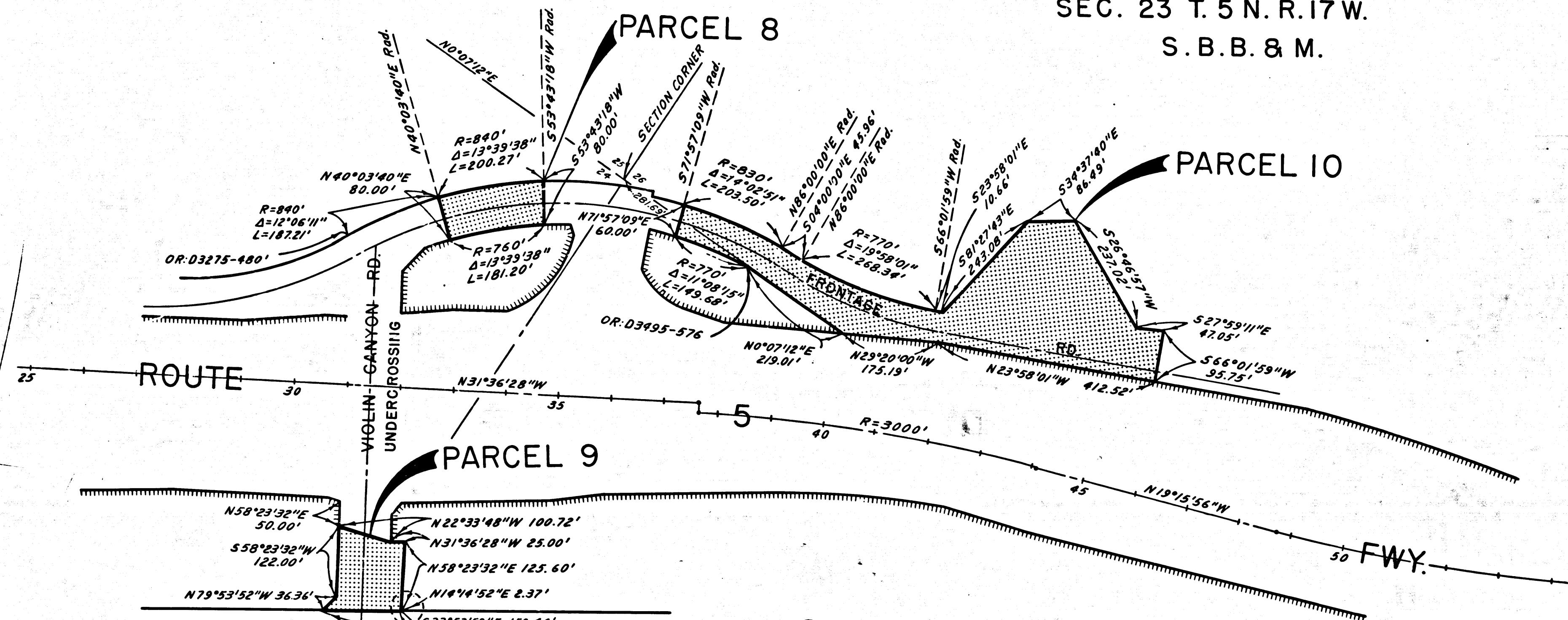
FILED WITH LOS ANGELES COUNTY RECORDER, RAY E. LEE

DIST	COUNTY	ROUTE	POST MILES	SHEET NO.	TOTAL SHEETS
07	L.A.	5	55.5/59.8	9	9

COUNTY OF LOS ANGELES

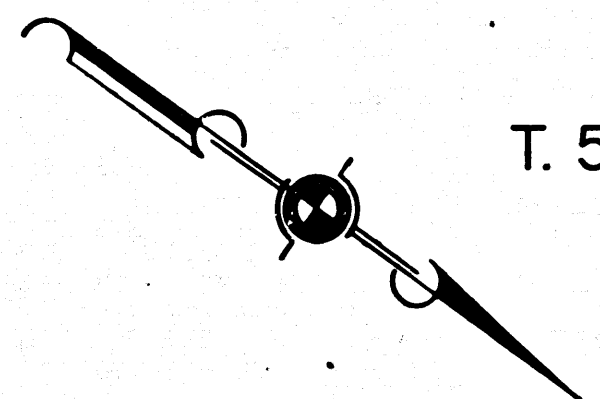
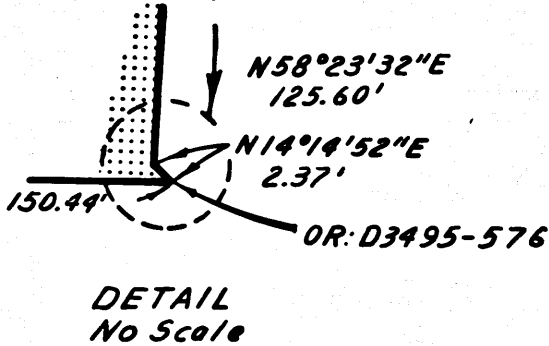
R.W. Felkin
 SENIOR HIGHWAY ENGINEER
 February 20, 1968
 DATE

SEC. 23 T. 5 N. R. 17 W.
 S. B. B. & M.



CASTAIC RD.

SEC. 24
 T. 5 N. R. 17 W. S. B. & M.



INTERSTATE
 STATE OF CALIFORNIA
 TRANSPORTATION AGENCY
 DEPARTMENT OF PUBLIC WORKS
 DIVISION OF HIGHWAYS

PROPOSED RELINQUISHMENT

0 100 200 300 400

AREA TO BE RELINQUISHED SHOWN THUS [stippled pattern]

ACCESS PROHIBITED [hatched pattern]

DR'N BY	L. S.	R/W MAP NO.	F-13/2
C'LC BY	M. M.	REF. MAP NO.	
C'K'D BY	G. H.	REL-680	
REVISED			

COUNTY ENGINEER'S COPY