

DIST	COUNTY	ROUTE	POST MILES	SHEET NO.	TOTAL SHEETS
07	L.A.	2	3.9/5.9	1	4

STATE OF CALIFORNIA
 TRANSPORTATION AGENCY
 DEPARTMENT OF PUBLIC WORKS
 DIVISION OF HIGHWAYS

Authoy
 DEPUTY DISTRICT ENGINEER
 March 3, 1969
 DATE

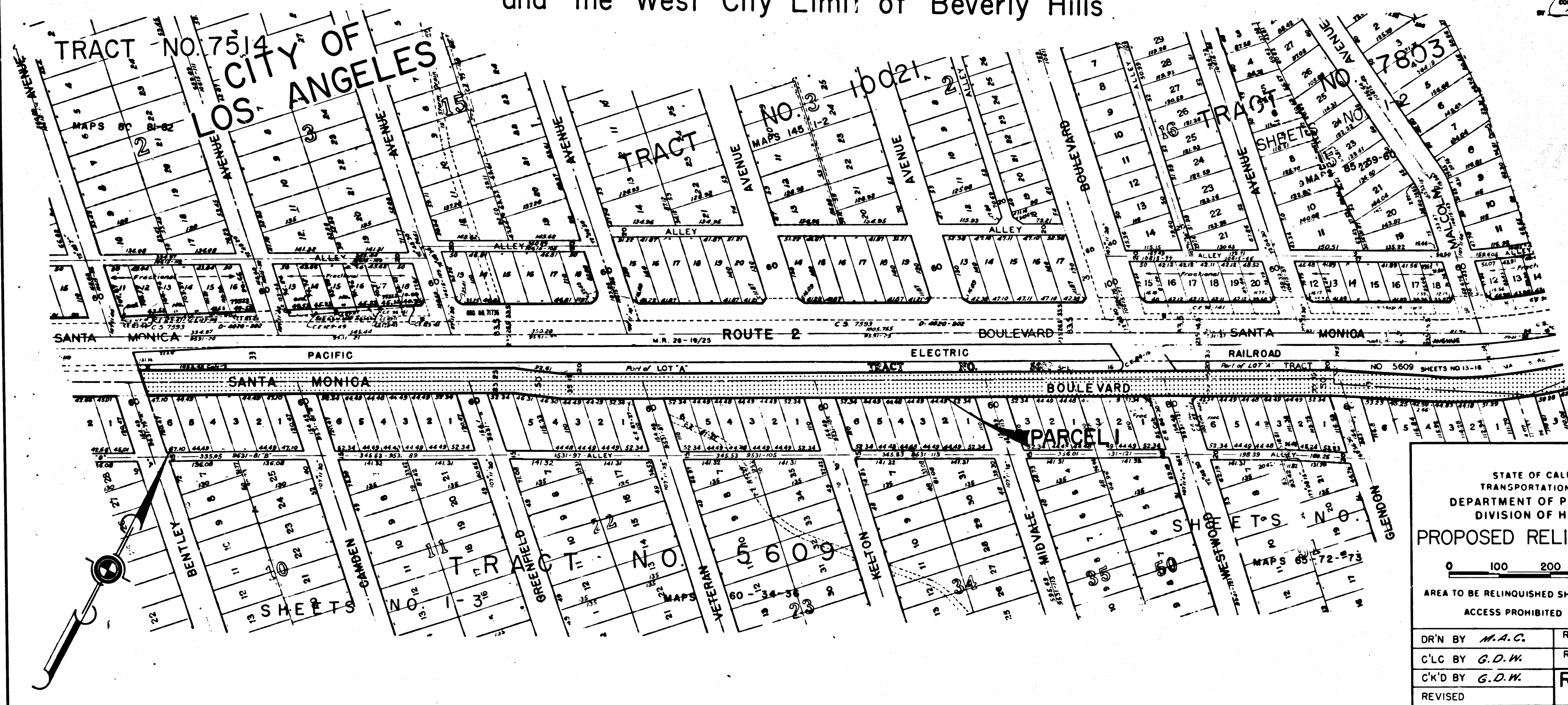
RIGHT OF WAY MAPS OF

STATE HIGHWAY

In the County of Los Angeles on superseded
 Route 2 along Santa Monica Blvd. between Bentley Ave.
 and the West City Limit of Beverly Hills

2224

FILED
 AT REQUEST OF
 DEPT. OF PUBLIC WORKS
 MAR. 10, 1969
 14 MAPS 12 P.M.
 IN BOOK 7
 AT PAGE 87
 OF STATE HIGHWAY MAPS
 FOR LOS ANGELES COUNTY, CALIF.
 RAY E. LEE
 COUNTY RECORDER
 BY *Ray* free
 Deputy



STATE OF CALIFORNIA
 TRANSPORTATION AGENCY
 DEPARTMENT OF PUBLIC WORKS
 DIVISION OF HIGHWAYS

PROPOSED RELINQUISHMENT

0 100 200 300 400

AREA TO BE RELINQUISHED SHOWN THUS

ACCESS PROHIBITED

DR'N BY <i>M.A.C.</i>	R/W MAP NO.
C/LC BY <i>G.D.W.</i>	REF MAP NO. <i>P25676</i>
C/K'D BY <i>G.D.W.</i>	REL-711
REVISED	

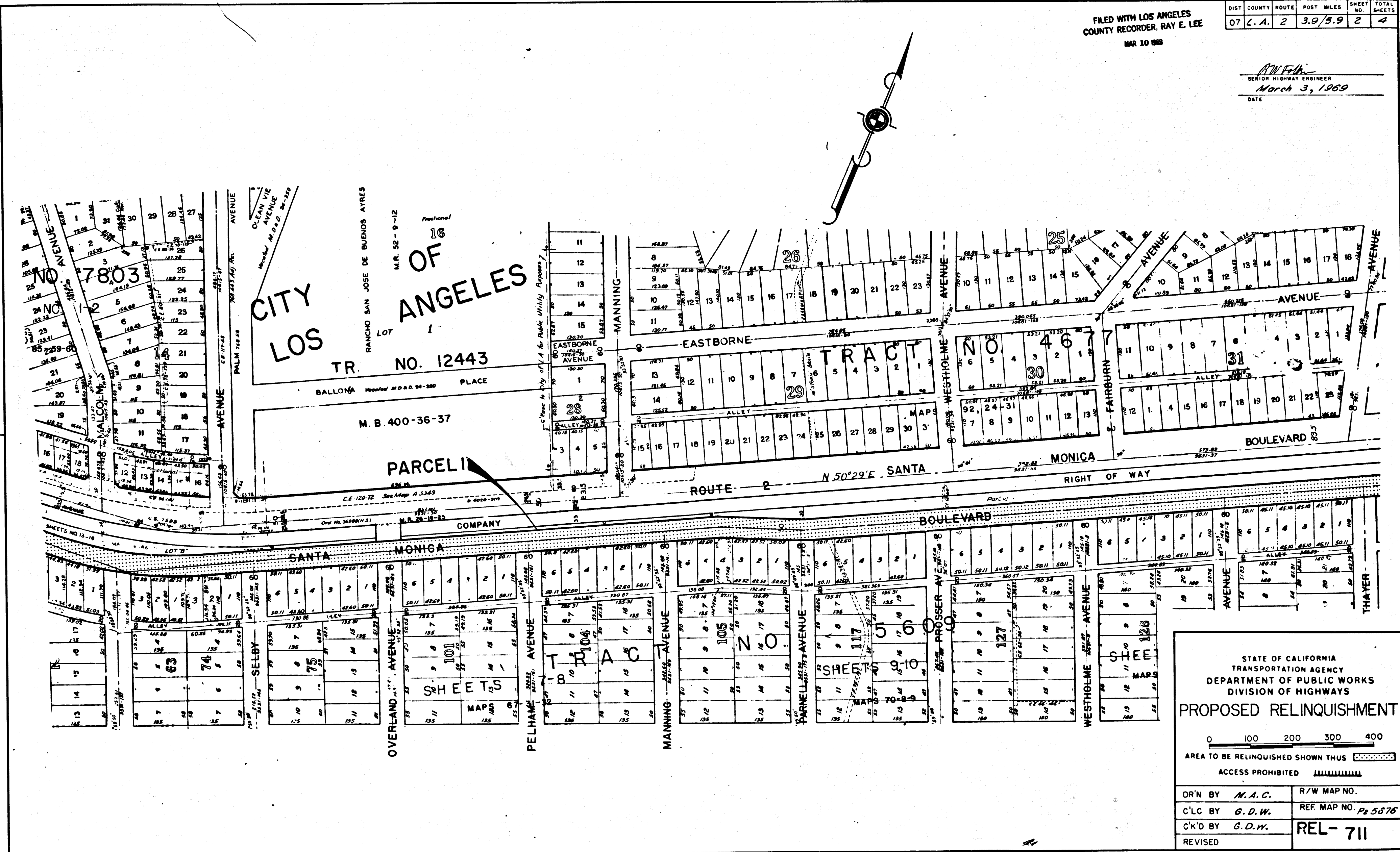
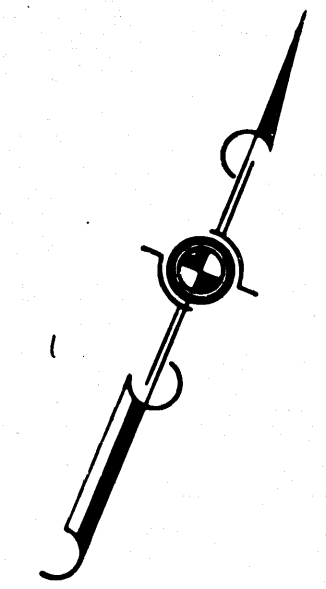
COUNTY ENGINEER'S COPY

7/17-60
 12/14

FILED WITH LOS ANGELES
COUNTY RECORDER, RAY E. LEE
MAR 10 1969

DIST	COUNTY	ROUTE	POST MILES	SHEET NO.	TOTAL SHEETS
07	L. A.	2	3.9/5.9	2	4

R.W. Felt
SENIOR HIGHWAY ENGINEER
March 3, 1969
DATE



STATE OF CALIFORNIA
TRANSPORTATION AGENCY
DIVISION OF HIGHWAYS

PROPOSED RELINQUISHMENT

0 100 200 300 400
AREA TO BE RELINQUISHED SHOWN THUS [Dotted Line]

ACCESS PROHIBITED [Wavy Line]

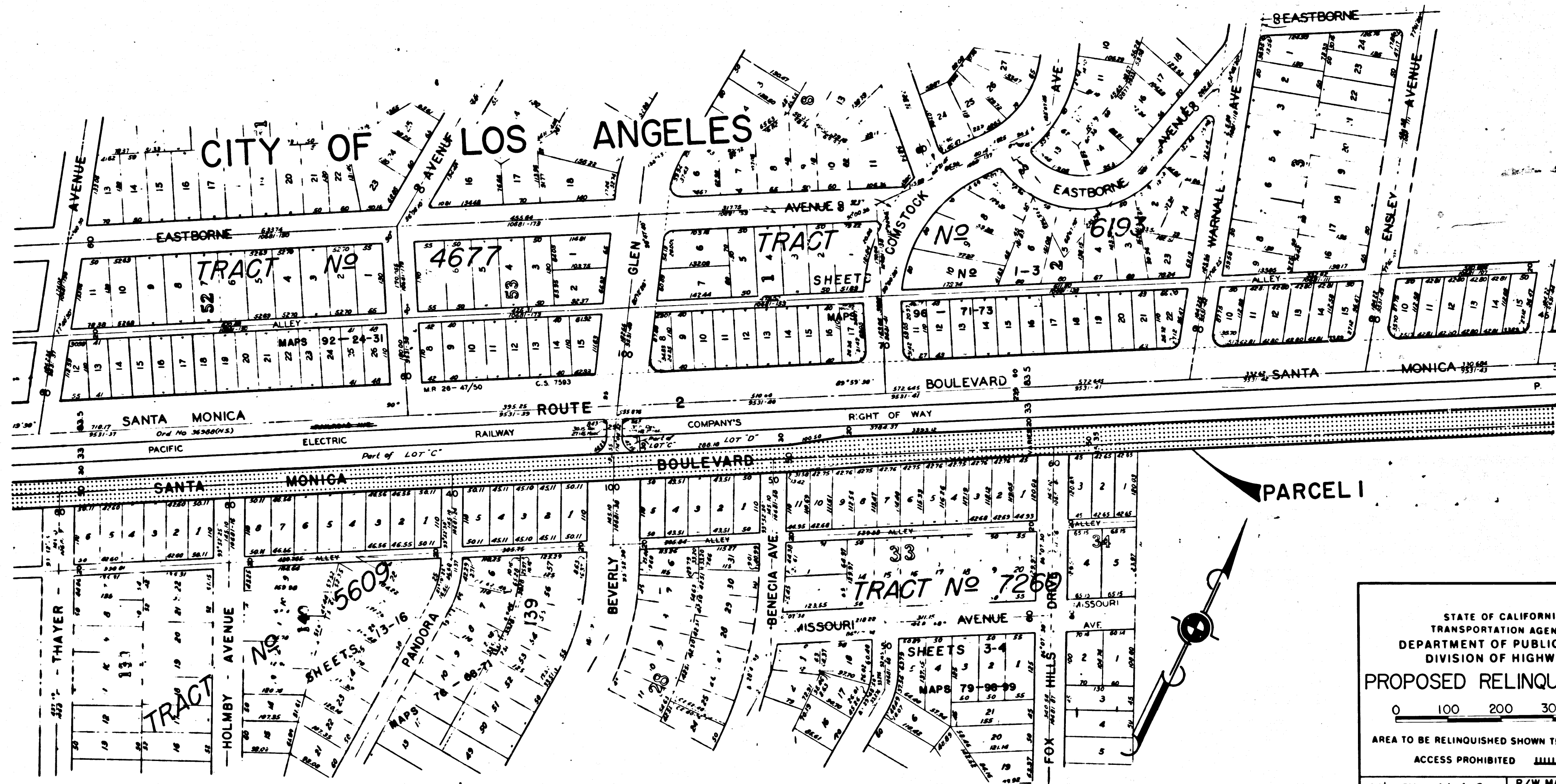
DR'N BY <i>M.A.C.</i>	R/W MAP NO.
C/LC BY <i>G.D.W.</i>	REF. MAP NO. <i>Pg 5876</i>
C/K'D BY <i>G.D.W.</i>	REL-711
REVISED	

COUNTY ENGINEER'S COPY

FILED WITH LOS ANGELES
COUNTY RECORDER, RAY E. LEE
MAR 30 1969

DIST	COUNTY	ROUTE	POST MILES	SHEET NO.	TOTAL SHEETS
07	L.A.	2	3.9/5.9	3	4

R.W.F.H.
SENIOR HIGHWAY ENGINEER
March 3, 1969
DATE



STATE OF CALIFORNIA
TRANSPORTATION AGENCY
DEPARTMENT OF PUBLIC WORKS
DIVISION OF HIGHWAYS

PROPOSED RELINQUISHMENT

0 100 200 300 400

AREA TO BE RELINQUISHED SHOWN THUS

ACCESS PROHIBITED

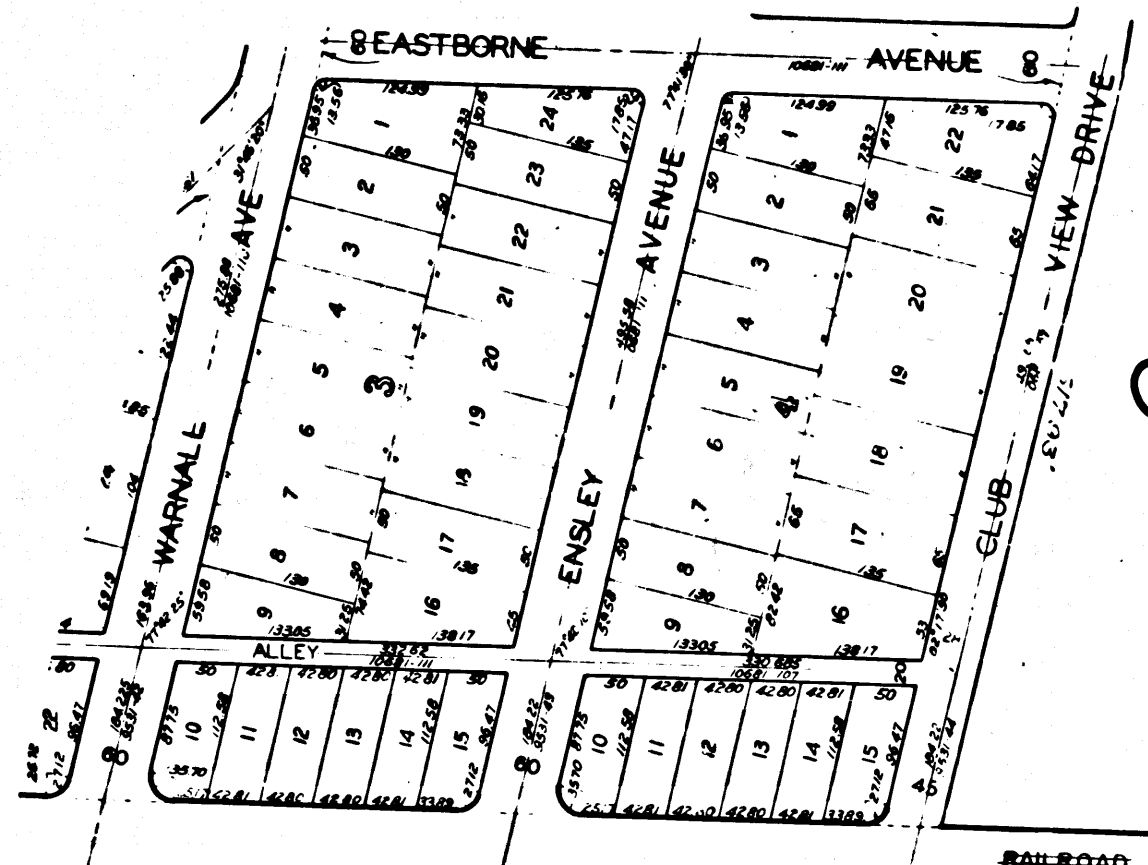
DR'N BY	M.A.C.	R/W MAP NO.
C'LG BY	G.D.W.	REF. MAP NO. P 5677
C'K'D BY	G.D.W.	REL- 711
REVISED		

COUNTY ENGINEER'S COPY

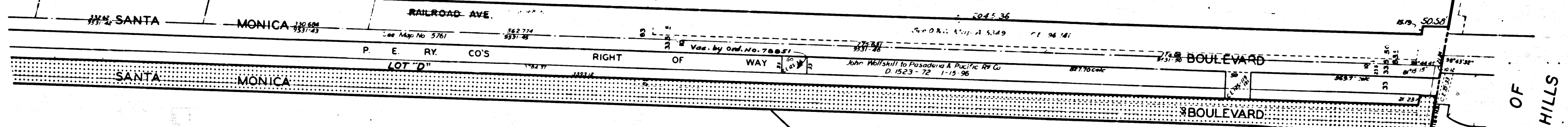
FILED WITH LOS ANGELES
COUNTY RECORDER, RAY E. LEE
MAR 10 1969

DIST	COUNTY	ROUTE	POST MILES	SHEET NO.	TOTAL SHEETS
07	L.A.	2	3.9/5.9	4	4

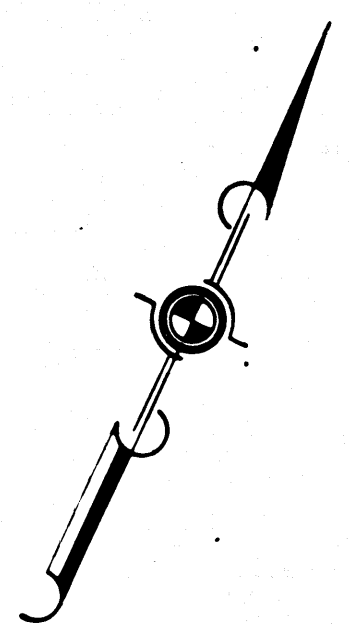
A.W.F.H.
SENIOR HIGHWAY ENGINEER
March 3, 1969
DATE



CITY OF LOS ANGELES
TRACT No. 4568
MB - 54-48



TRACT No. 5609
SHEETS 13-16
MAPS 76 - 68-71



STATE OF CALIFORNIA
TRANSPORTATION AGENCY
DEPARTMENT OF PUBLIC WORKS
DIVISION OF HIGHWAYS

PROPOSED RELINQUISHMENT

0 100 200 300 400

AREA TO BE RELINQUISHED SHOWN THUS

ACCESS PROHIBITED

DR'N BY M.A.C.	R/W MAP NO.
C'LC BY S.D.W.	REF. MAP NO. P25677
C'K'D BY G.D.W.	REL-711
REVISED 2-18-69	

COUNTY ENGINEER'S COPY