

DIST	COUNTY	ROUTE	POST MILES	SHEET NO.	TOTAL SHEETS
07	L.A.	210	37.8/39.6	1	8

PK 7
Pg 91

STATE OF CALIFORNIA
TRANSPORTATION AGENCY
DEPARTMENT OF PUBLIC WORKS
DIVISION OF HIGHWAYS

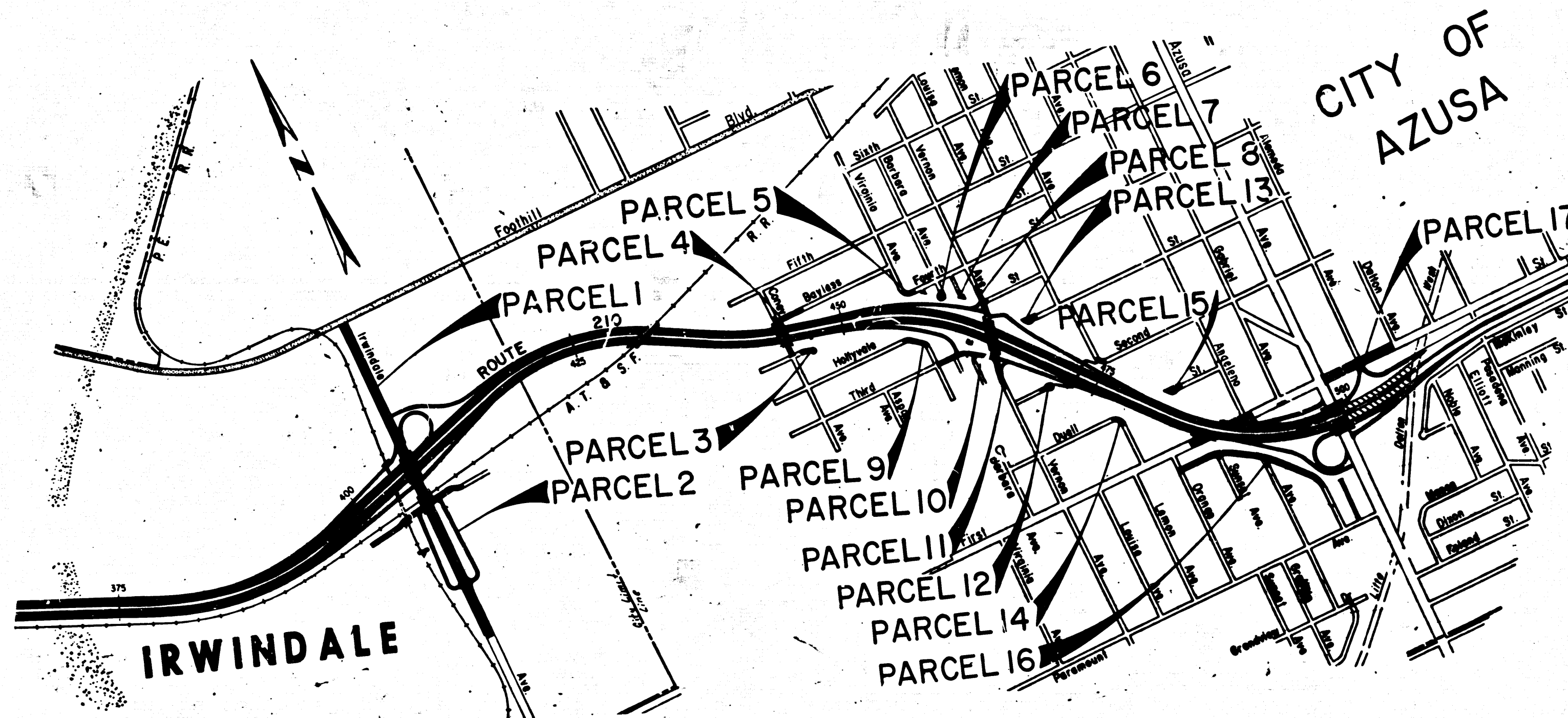
awHoy
DEPUTY DISTRICT ENGINEER
March 20, 1969
DATE

RIGHT OF WAY MAPS OF
STATE HIGHWAY

In the County of Los Angeles on Rte. 210 between
0.1 mi. west of Irwindale Ave to 0.2 mi east of Azusa Ave.

2517

FILED
AT REQUEST OF
DEPT. OF PUBLIC WORKS
MAR. 26 1969
MIN. PAST 2 PM
BY *J. J. Jones*
Deputy
FREE



STATE OF CALIFORNIA
TRANSPORTATION AGENCY
DEPARTMENT OF PUBLIC WORKS
DIVISION OF HIGHWAYS
PROPOSED RELINQUISHMENT

SCALE
0 600 1200 1800 2400

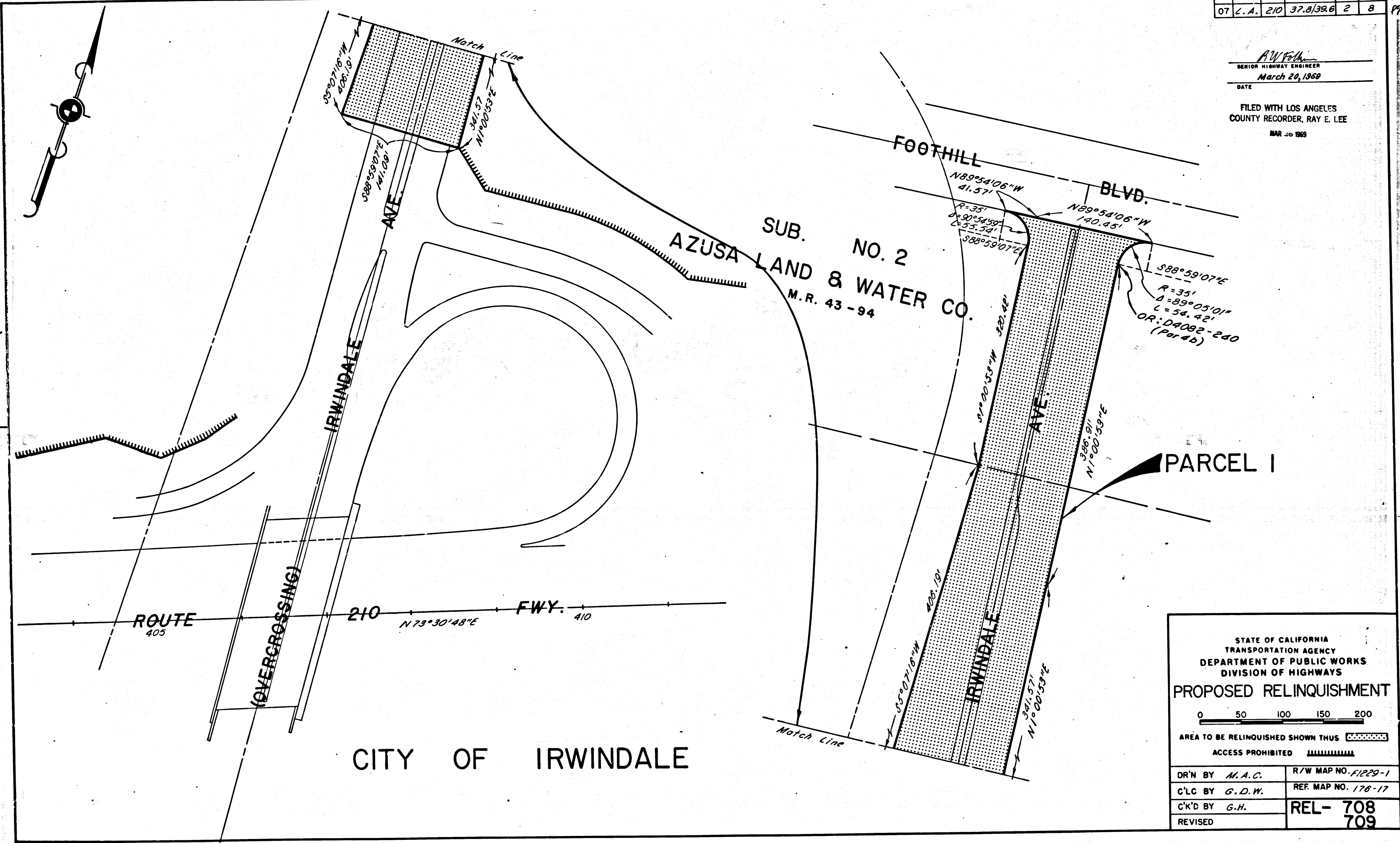
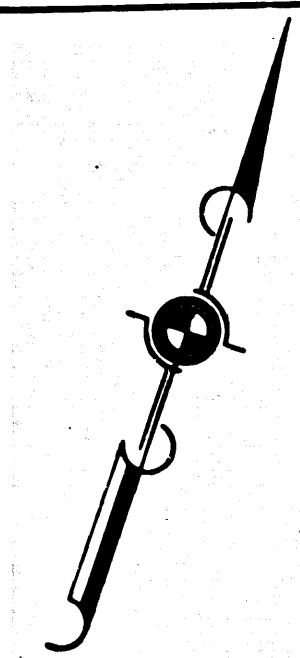
DR'N BY M.A.C.	R/W MAP NO. E1228 E1229 E1250
C'LC BY G.D.W.	REF. MAP NO. 176-16
C'K'D BY G.H.	REL-708 709
REVISED	

DIST	COUNTY	ROUTE	POST MILES	SHEET NO.	TOTAL SHEETS
07	L.A.	210	37.8/39.6	2	8

Sheet 7 of 8

R.W. Lee
 SENIOR HIGHWAY ENGINEER
 DATE March 20, 1969

FILED WITH LOS ANGELES COUNTY RECORDER, RAY E. LEE
 MAR 20 1969



STATE OF CALIFORNIA
 TRANSPORTATION AGENCY
 DEPARTMENT OF PUBLIC WORKS
 DIVISION OF HIGHWAYS

PROPOSED RELINQUISHMENT

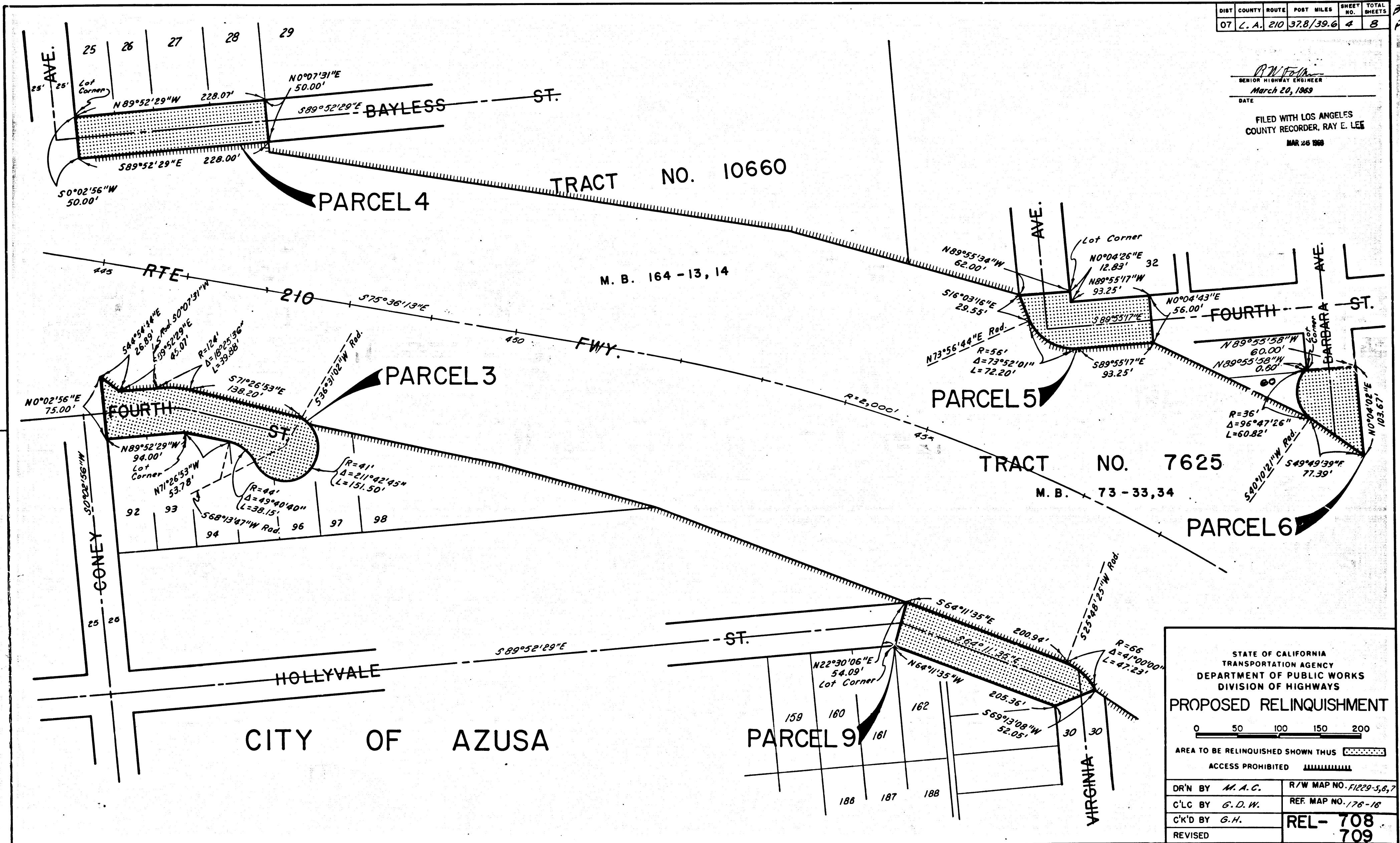
0 50 100 150 200

AREA TO BE RELINQUISHED SHOWN THUS

ACCESS PROHIBITED

DR'N BY <i>M.A.C.</i>	R/W MAP NO. <i>F1229-1</i>
C'LC BY <i>G.D.W.</i>	REF. MAP NO. <i>176-17</i>
C'K'D BY <i>G.H.</i>	REL- 708
REVISED	709

R.W. Fisher
 SENIOR HIGHWAY ENGINEER
 March 20, 1969
 DATE
 FILED WITH LOS ANGELES COUNTY RECORDER, RAY E. LEE
 MAR 26 1969



CITY OF AZUSA

STATE OF CALIFORNIA
 TRANSPORTATION AGENCY
 DEPARTMENT OF PUBLIC WORKS
 DIVISION OF HIGHWAYS

PROPOSED RELINQUISHMENT

0 50 100 150 200

AREA TO BE RELINQUISHED SHOWN THUS

ACCESS PROHIBITED

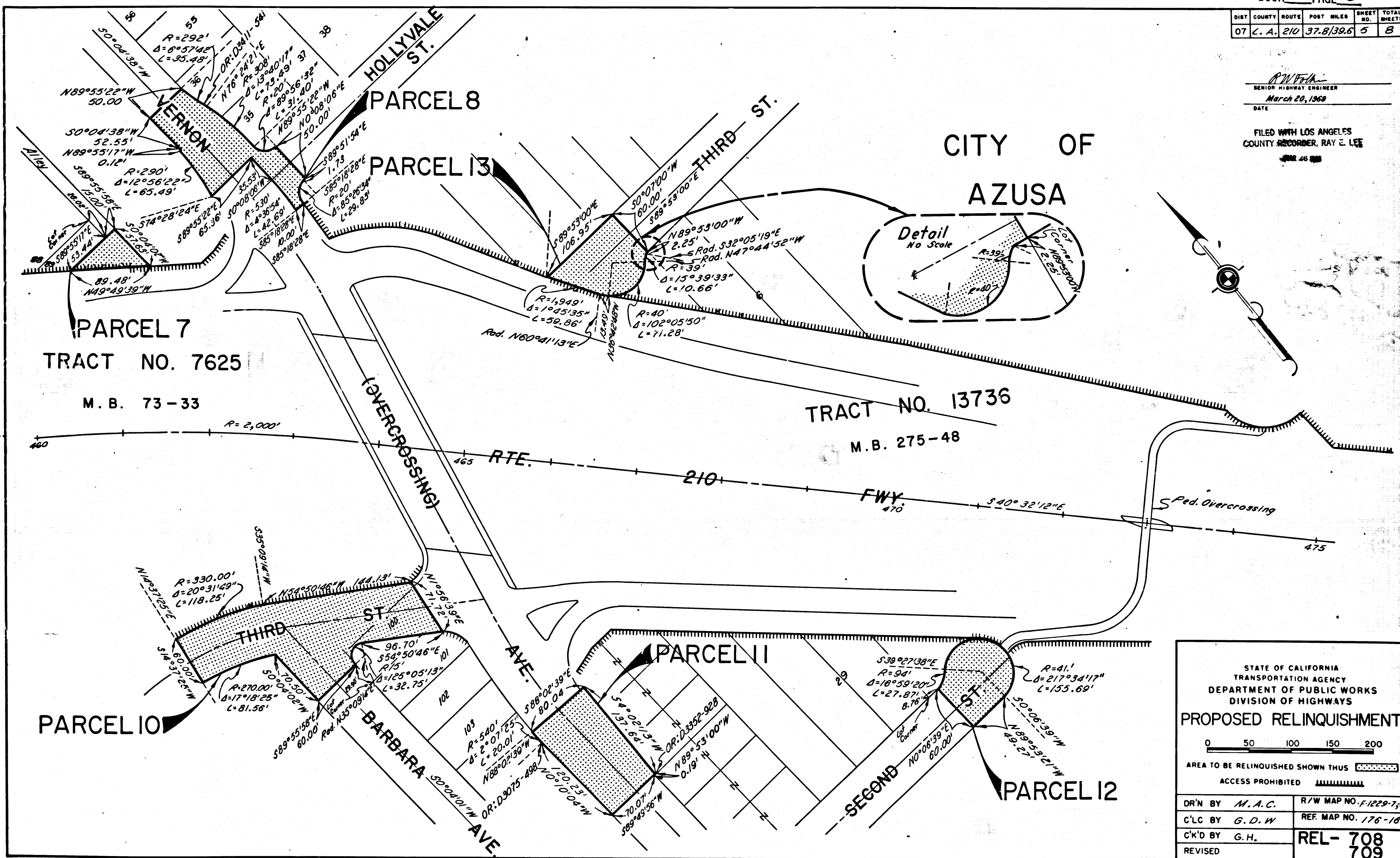
DR'N BY M.A.C.	R/W MAP NO. F1229-5,6,7
C'LC BY G.D.W.	REF. MAP NO. 178-18
C'K'D BY G.H.	REL-708
REVISED	709

DIST	COUNTY	ROUTE	POST MILES	SHEET NO.	TOTAL SHEETS
07	L. A.	210	37.8/39.6	5	8

Dk 7
Pg 95

R.W. Felt
SENIOR HIGHWAY ENGINEER
March 20, 1968
DATE

FILED WITH LOS ANGELES
COUNTY RECORDER, RAY E. LEE



STATE OF CALIFORNIA
TRANSPORTATION AGENCY
DEPARTMENT OF PUBLIC WORKS
DIVISION OF HIGHWAYS

PROPOSED RELINQUISHMENT

0 50 100 150 200

AREA TO BE RELINQUISHED SHOWN THUS

ACCESS PROHIBITED

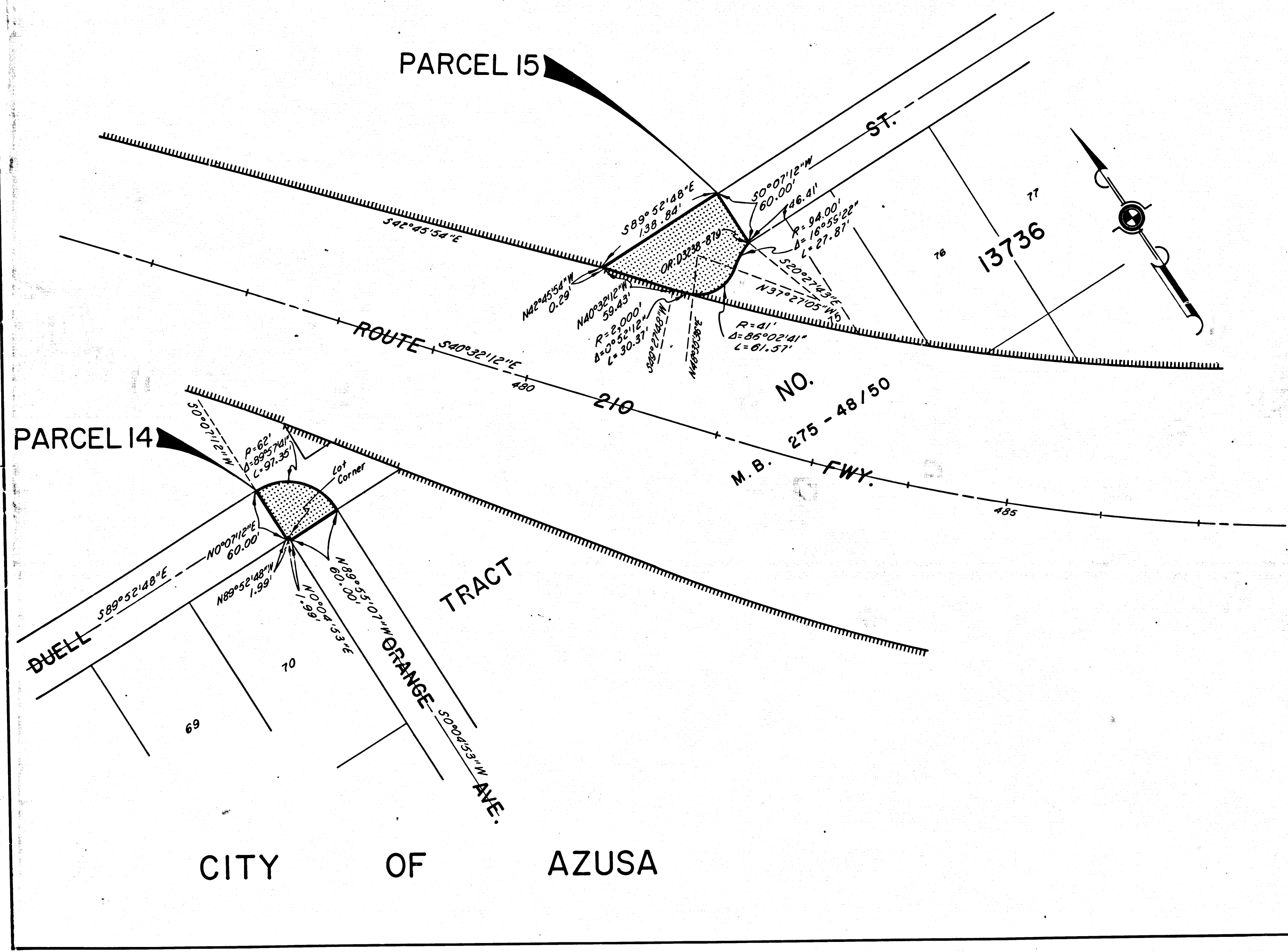
DR'N BY	M. A. C.	R/W MAP NO.	F-1229-7;8
C'LC BY	G. D. W.	REF. MAP NO.	176-18
C'K'D BY	G. H.	REL-	708
REVISED			709

DIST	COUNTY	ROUTE	POST MILES	SHEET NO.	TOTAL SHEETS
07	L.A.	210	37.8/39.6	6	8

Bx 7
Pg 96

R.W. Perkins
SENIOR HIGHWAY ENGINEER
DATE March 20, 1969

FILED WITH LOS ANGELES
COUNTY RECORDER, MAY E. LEE
MAR 26 1969



CITY OF AZUSA

STATE OF CALIFORNIA
TRANSPORTATION AGENCY
DEPARTMENT OF PUBLIC WORKS
DIVISION OF HIGHWAYS

PROPOSED RELINQUISHMENT

0 50 100 150 200

AREA TO BE RELINQUISHED SHOWN THUS [Hatched Box]

ACCESS PROHIBITED [Hatched Box]

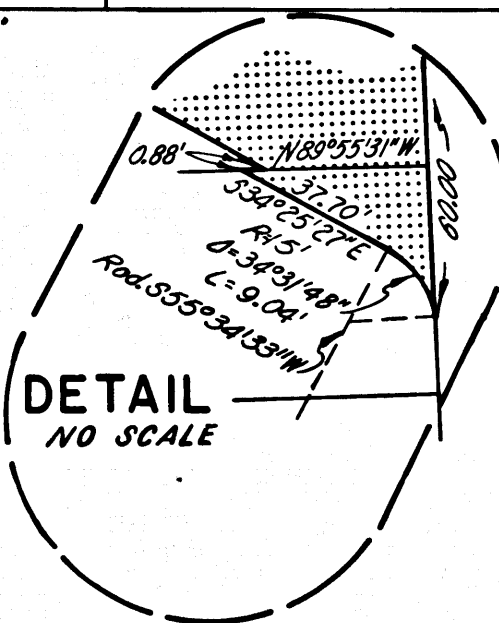
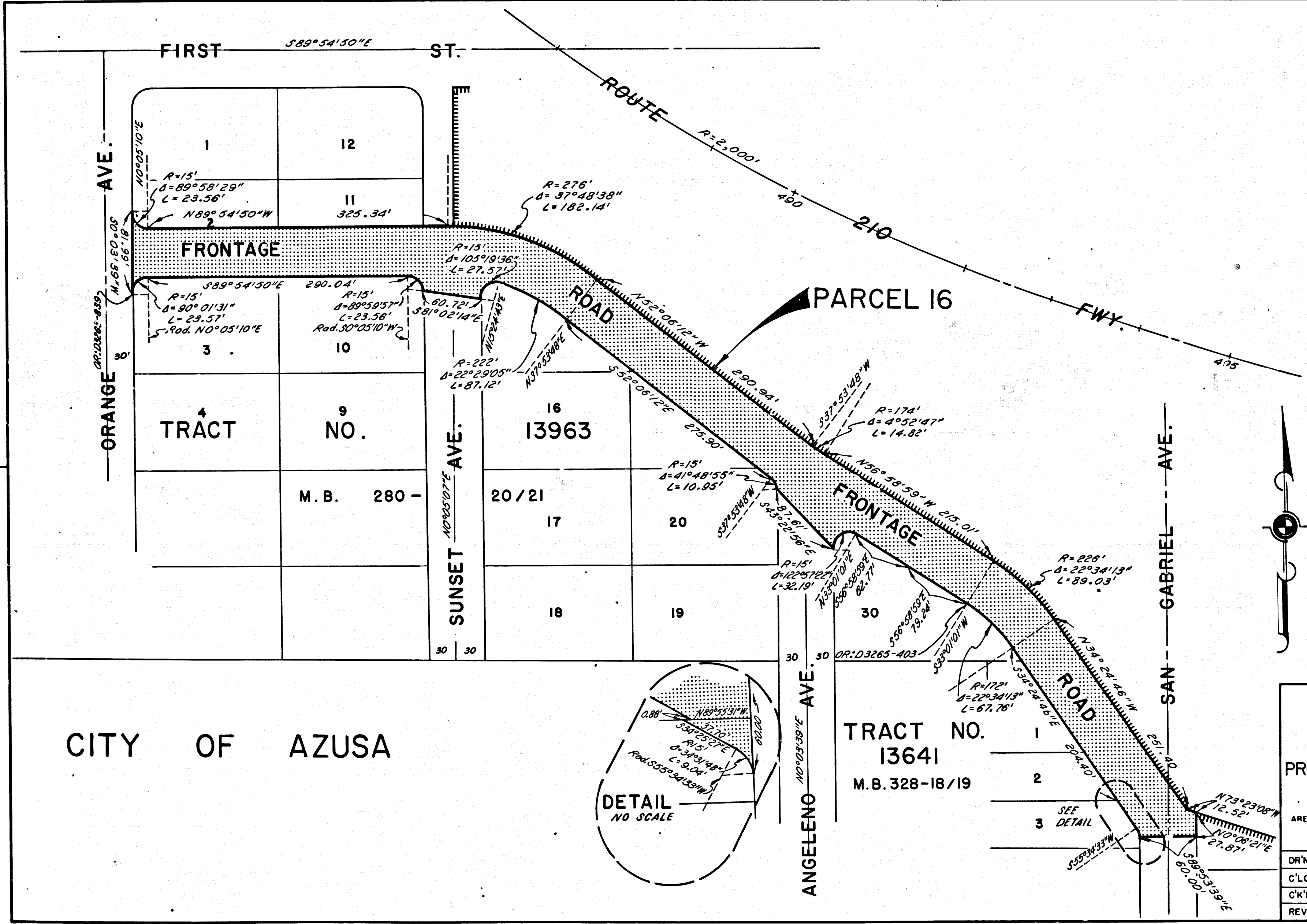
DR'N BY M.A.C.	R/W MAP NO. F1230
C'LC BY G.D.W.	REF. MAP NO. 176-17
C'K'D BY G.H.	REL-708
REVISED	709

DIST	COUNTY	ROUTE	POST MILES	SHEET NO.	TOTAL SHEETS
07	L.A.	210	37.8/39.6	7	8

PK 7
Pg 97

R.W. Felton
SENIOR HIGHWAY ENGINEER
March 20, 1969
DATE

FILED WITH LOS ANGELES
COUNTY RECORDER, RAY E. LEE
MAR 26 1969



CITY OF AZUSA

TRACT NO. 13641
M.B. 328-18/19

STATE OF CALIFORNIA
TRANSPORTATION AGENCY
DEPARTMENT OF PUBLIC WORKS
DIVISION OF HIGHWAYS

PROPOSED RELINQUISHMENT

0 50 100 150 200

AREA TO BE RELINQUISHED SHOWN THUS [Dotted Pattern]

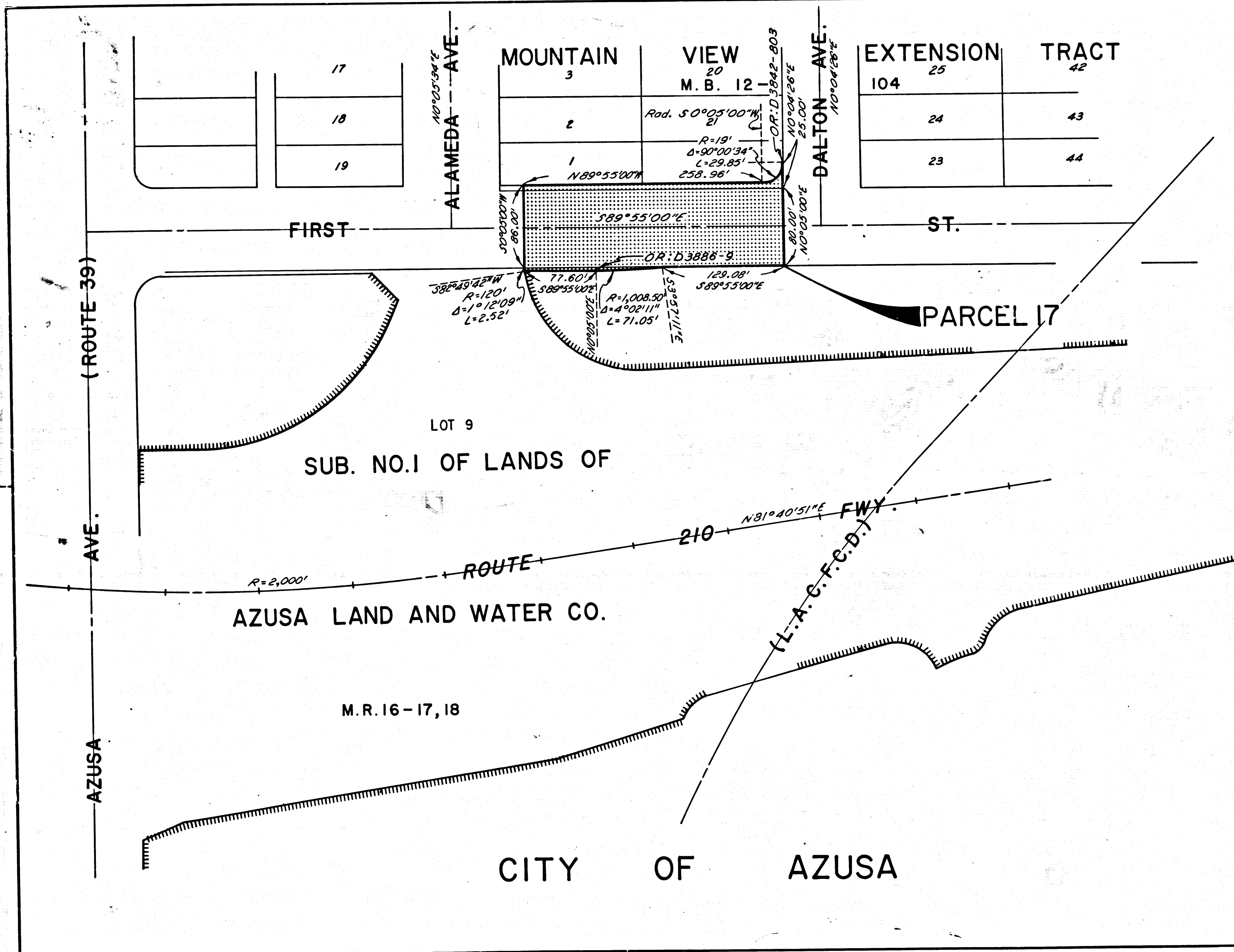
ACCESS PROHIBITED [Hatched Pattern]

DR'N BY	M. A. C.	R/W MAP NO. F1230-2,3
C'LC BY	G. D. H.	REF. MAP NO. 176-18
C'K'D BY	G. H.	REL-708
REVISED		709

DIST	COUNTY	ROUTE	POST MILES	SHEET NO.	TOTAL SHEETS
07	L. A.	210	37.8/39.6	8	8

EX 7
1998

R.W. Felt
SENIOR HIGHWAY ENGINEER
March 20, 1989
DATE
FILED WITH LOS ANGELES
COUNTY RECORDER, RAY E. LEE
MAR 24 1989



STATE OF CALIFORNIA
 TRANSPORTATION AGENCY
 DEPARTMENT OF PUBLIC WORKS
 DIVISION OF HIGHWAYS

PROPOSED RELINQUISHMENT

0 50 100 150 200

AREA TO BE RELINQUISHED SHOWN THUS

ACCESS PROHIBITED

DR'N BY <i>M. A. C.</i>	R/W MAP NO. 1230-4
C'LC BY <i>G. D. M.</i>	REF. MAP NO. 176-18
C'K'D BY <i>G. H.</i>	REL-708
REVISED	709