

DIST	COUNTY	ROUTE	POST MILES	SHEET NO.	TOTAL SHEETS
07	L.A.	10	10.5/11.4	1	3

STATE OF CALIFORNIA
 TRANSPORTATION AGENCY
 DEPARTMENT OF PUBLIC WORKS
 DIVISION OF HIGHWAYS

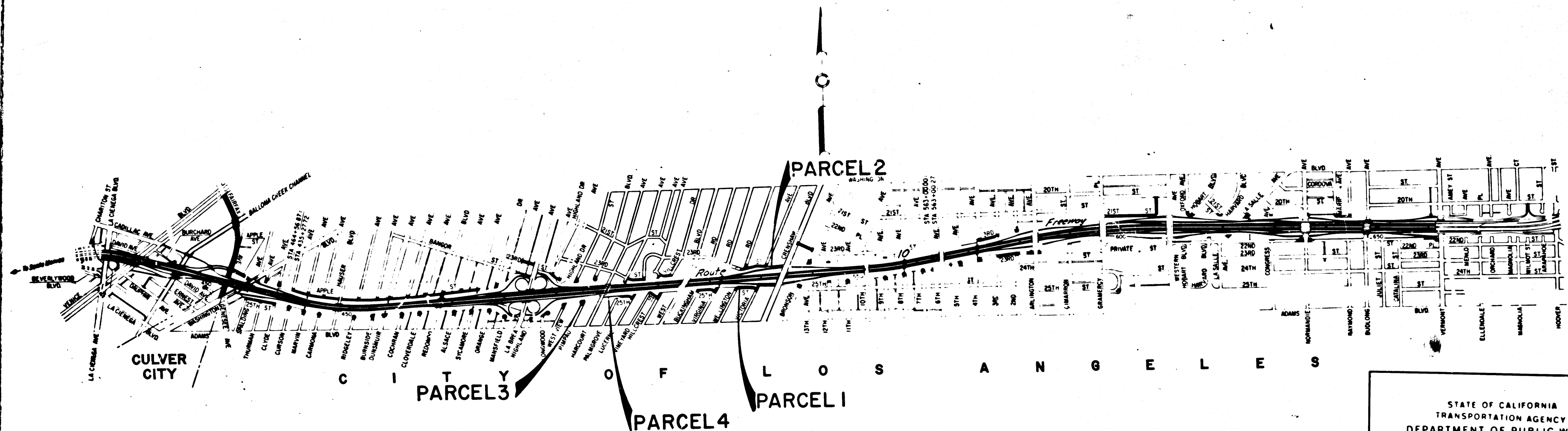
awh
 DEPUTY DISTRICT ENGINEER
 April 1, 1969
 DATE

RIGHT OF WAY MAPS OF
STATE HIGHWAY

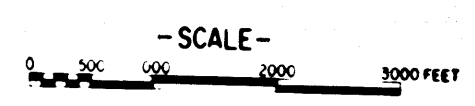
In the City of Los Angeles on Route 10 between
 La Brea Ave. and Crenshaw Blvd.

4378

FILED
 AT REQUEST OF
 DEPT. OF PUBLIC WORKS
 APRIL 9, 1969
 1 MIN. PAST 1 PM
 IN BOOK 8
 AT PAGE 1
 OF STATE HIGHWAY MAPS
 LOS ANGELES COUNTY, CALIF.
 FAY E. LEE
 COUNTY RECORDER
 BY *John E. Garcia*
 Deputy
 FREE



STATE OF CALIFORNIA
 TRANSPORTATION AGENCY
 DEPARTMENT OF PUBLIC WORKS
 DIVISION OF HIGHWAYS
PROPOSED RELINQUISHMENT

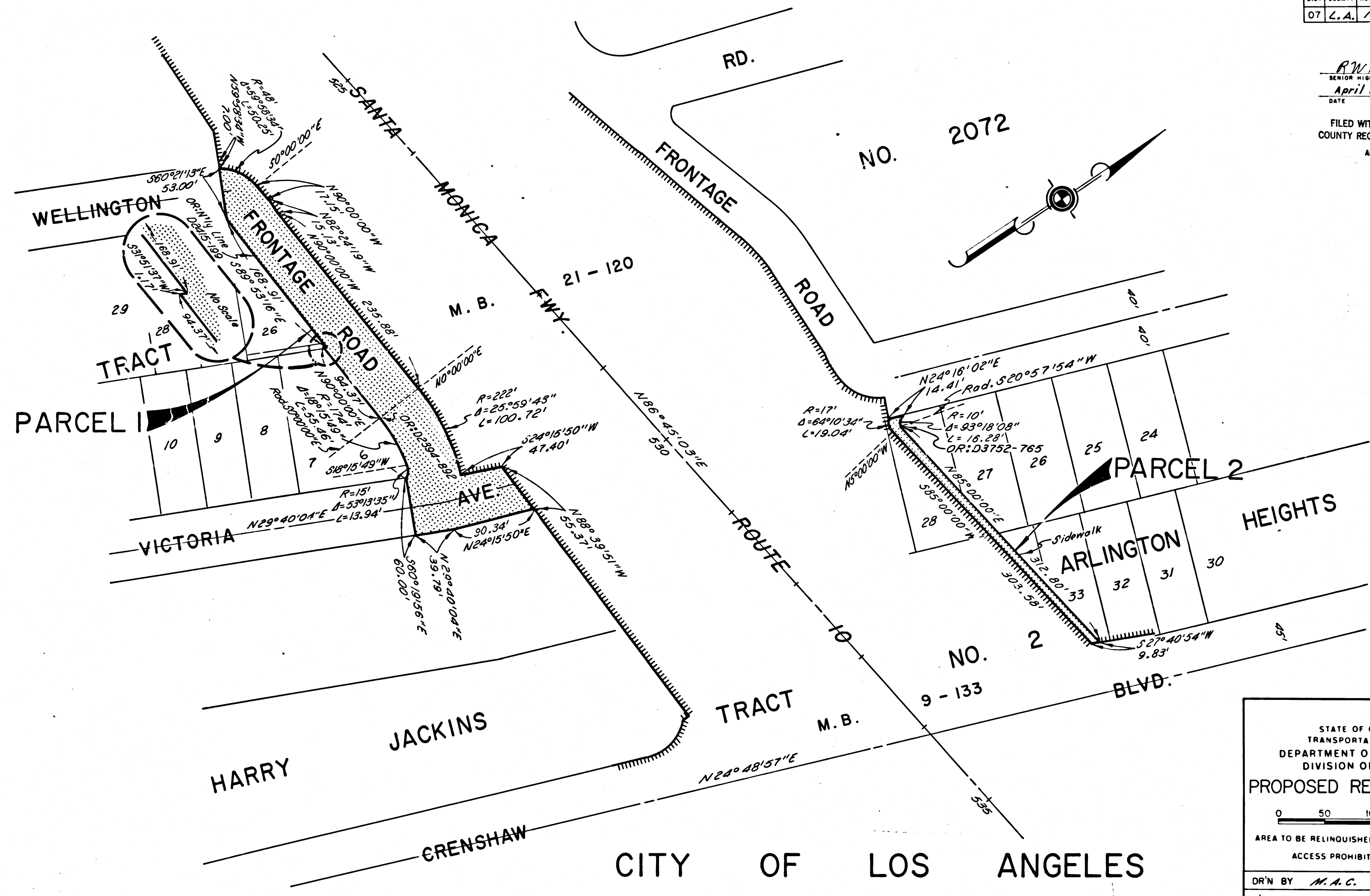


DR'N BY <i>M.A.C.</i>	R/W MAP NO. <i>F-2078</i>
C'LC BY <i>G.D.W.</i>	REF MAP NO. <i>148-4</i>
C'K'D BY <i>G.H.</i>	REL- 578
REVISED	

DIST	COUNTY	ROUTE	POST MILES	SHEET NO.	TOTAL SHEETS
07	L.A.	10	10.4/11.4	2	3

R.W. Folkin
 SENIOR HIGHWAY ENGINEER
 April 4, 1969
 DATE

FILED WITH LOS ANGELES
 COUNTY RECORDER, RAY E. LEE
 APR 9 1969



STATE OF CALIFORNIA
 TRANSPORTATION AGENCY
 DEPARTMENT OF PUBLIC WORKS
 DIVISION OF HIGHWAYS

PROPOSED RELINQUISHMENT

0 50 100 150 200

AREA TO BE RELINQUISHED SHOWN THUS

ACCESS PROHIBITED

DR'N BY	M.A.C.	R/W MAP NO.	F-2074
C'LC BY	G.D.W.	REF. MAP NO.	148-A
C'K'D BY	G.H.	REL-	578
REVISED			

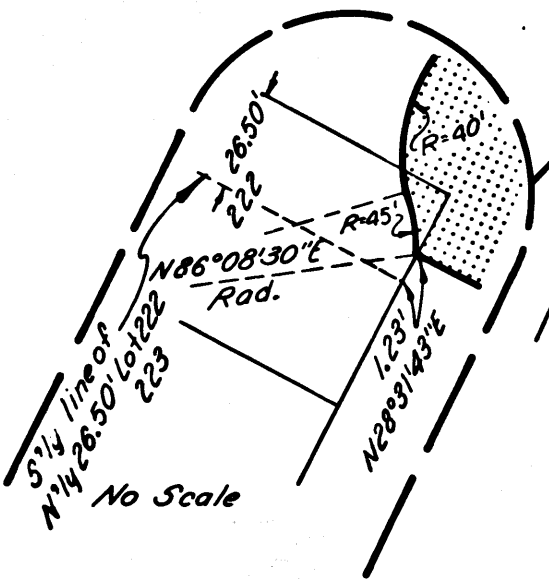
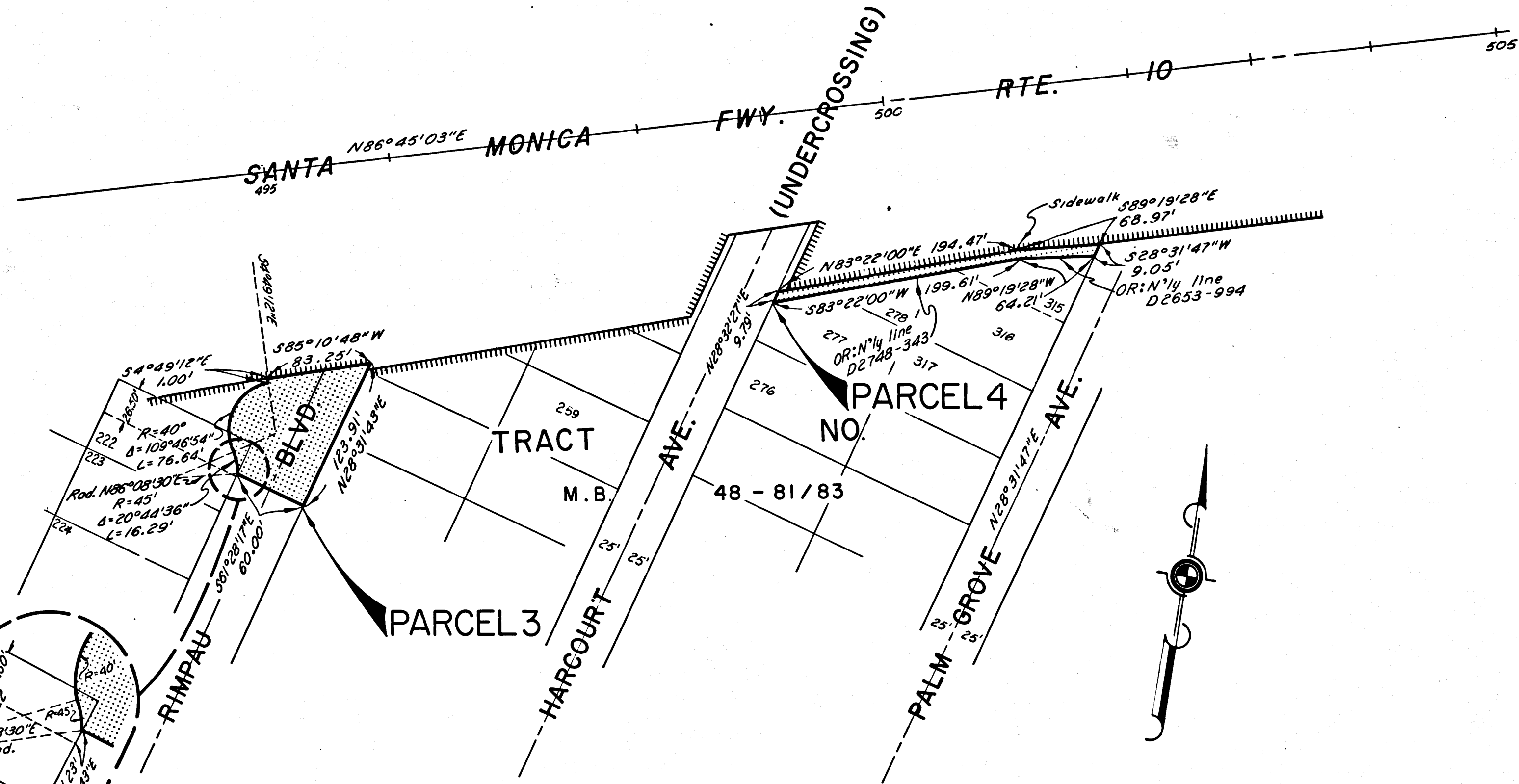
CITY OF LOS ANGELES

DIST	COUNTY	ROUTE	POST MILES	SHEET NO.	TOTAL SHEETS
07	L.A.	10	10.5/11.4	3	3

CITY OF LOS ANGELES

B.W. Fisher
 SENIOR HIGHWAY ENGINEER
 April 1, 1968
 DATE

FILED WITH LOS ANGELES
 COUNTY RECORDER, RAY E. LEE
 APR 9 1968



STATE OF CALIFORNIA
 TRANSPORTATION AGENCY
 DEPARTMENT OF PUBLIC WORKS
 DIVISION OF HIGHWAYS

PROPOSED RELINQUISHMENT

0 50 100 150 200

AREA TO BE RELINQUISHED SHOWN THUS

ACCESS PROHIBITED

DR'N BY M.A.C.	R/W MAP NO. F2074
C'LC BY G.D.W.	REF. MAP NO. 148-4
C'K'D BY G.H.	REL- 578
REVISED	