

DIST	COUNTY	ROUTE	POST MILES	SHEET NO.	TOTAL SHEETS
07	L.A.	10	13.7	1	2

STATE OF CALIFORNIA
 TRANSPORTATION AGENCY
 DEPARTMENT OF PUBLIC WORKS
 DIVISION OF HIGHWAYS

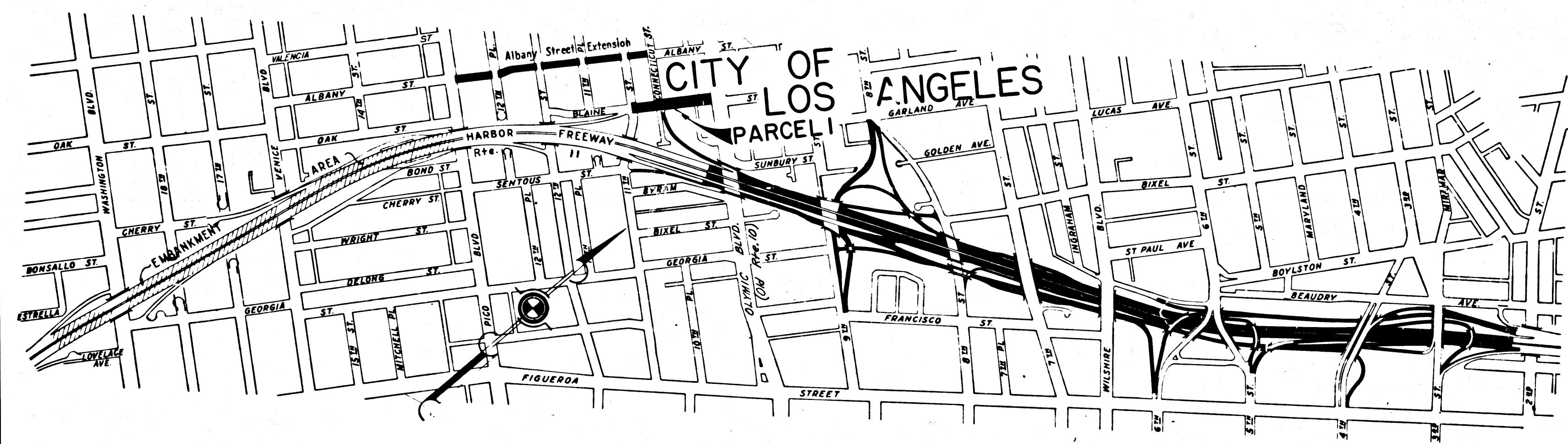
awh
 DEPUTY DISTRICT ENGINEER
 April 16, 1969
 DATE

RIGHT OF WAY MAPS OF
STATE HIGHWAY

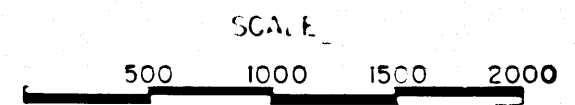
3141

In the City of Los Angeles near the Harbor Fwy.
 on Blaine St. between 11th. St and Olympic Blvd.

FILED
 AT REQUEST OF
 DEPT. OF PUBLIC WORKS
 APRIL 24, 1969
 12:12 PM
 IN BOOK 8
 AT PAGE 4
 OF STATE HIGHWAY MAPS
 LOS ANGELES COUNTY, CALIF.
 RAY E. LEE
 COUNTY RECORDER
 FREE



STATE OF CALIFORNIA
 TRANSPORTATION AGENCY
 DEPARTMENT OF PUBLIC WORKS
 DIVISION OF HIGHWAYS
PROPOSED RELINQUISHMENT



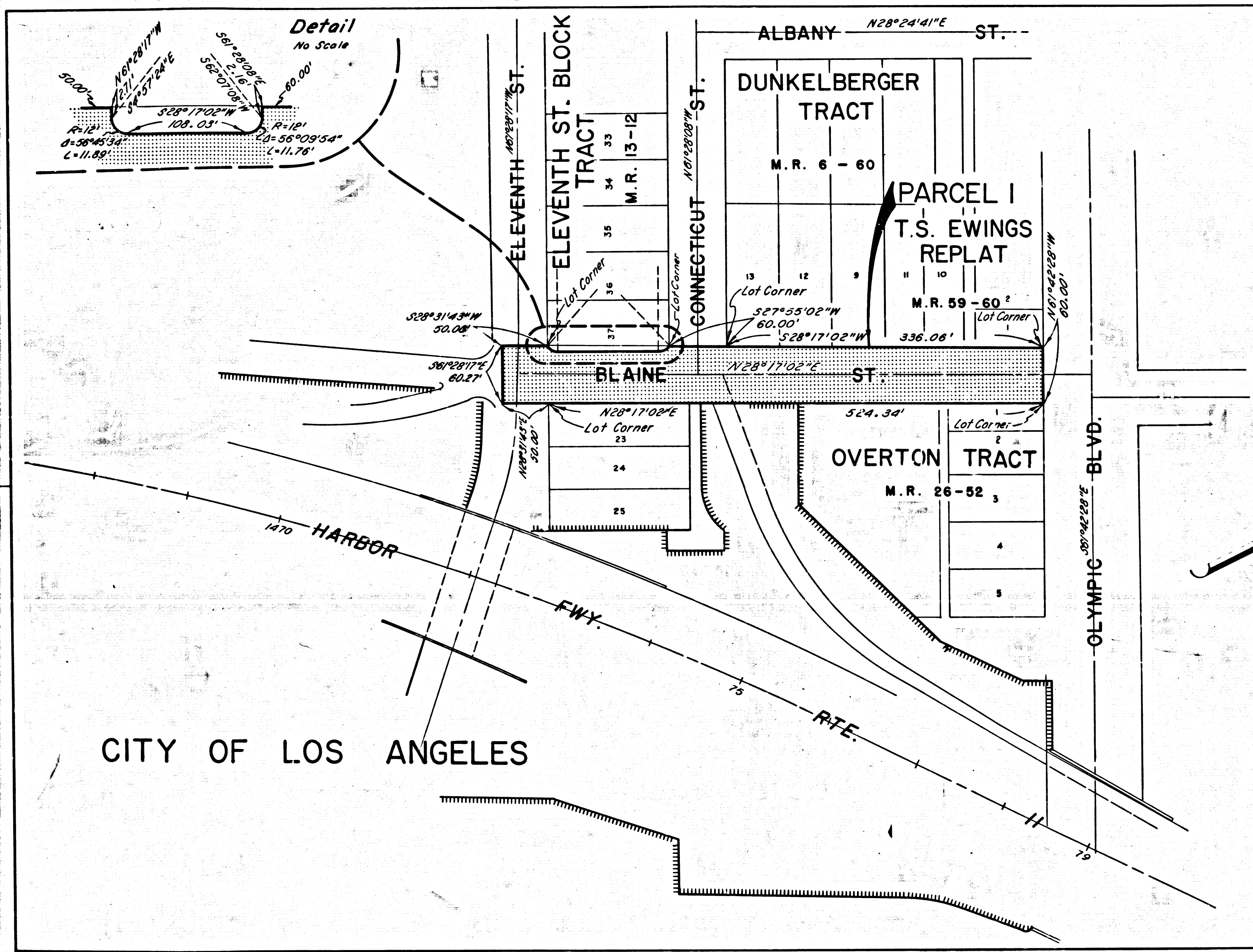
DR'N BY	M.A.C.	R/W MAP NO.	F-1358
C'LC BY	G.D.W.	REF. MAP NO.	
C'K'D BY	G.J.H.	REL-	716
REVISED			

COUNTY ENGINEER'S COPY

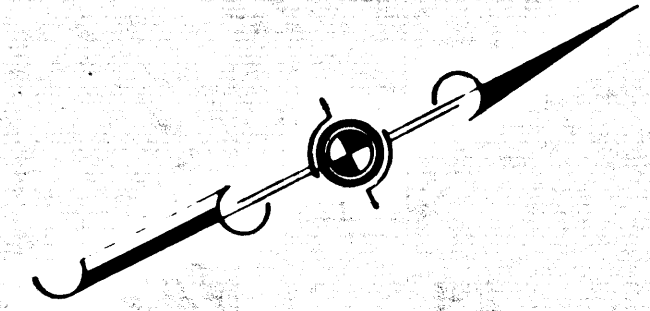
DIST	COUNTY	ROUTE	POST MILES	SHEET NO.	TOTAL SHEETS
07	L.A.	10	13.7	2	2

R.W. Fisher
 SENIOR HIGHWAY ENGINEER
 April 16, 1959
 DATE

FILED WITH LOS ANGELES
 COUNTY RECORDER, RAY E. LEE
 470 84 000



CITY OF LOS ANGELES



STATE OF CALIFORNIA
 TRANSPORTATION AGENCY
 DEPARTMENT OF PUBLIC WORKS
 DIVISION OF HIGHWAYS

PROPOSED RELINQUISHMENT

0 50 100 150 200

AREA TO BE RELINQUISHED SHOWN THUS

ACCESS PROHIBITED

DR'N BY <i>M.A.C.</i>	R/W MAP NO. <i>F-1358</i>
C'LC BY <i>G.D.W.</i>	REF. MAP NO.
C'K'D BY <i>G.J.H.</i>	REL- 716
REVISED	

COUNTY ENGINEER'S COPY