

DIST	COUNTY	ROUTE	POST MILES	SHEET NO.	TOTAL SHEETS
07	L.A.	60	85/86	1	2

STATE OF CALIFORNIA
 TRANSPORTATION AGENCY
 DEPARTMENT OF PUBLIC WORKS
 DIVISION OF HIGHWAYS

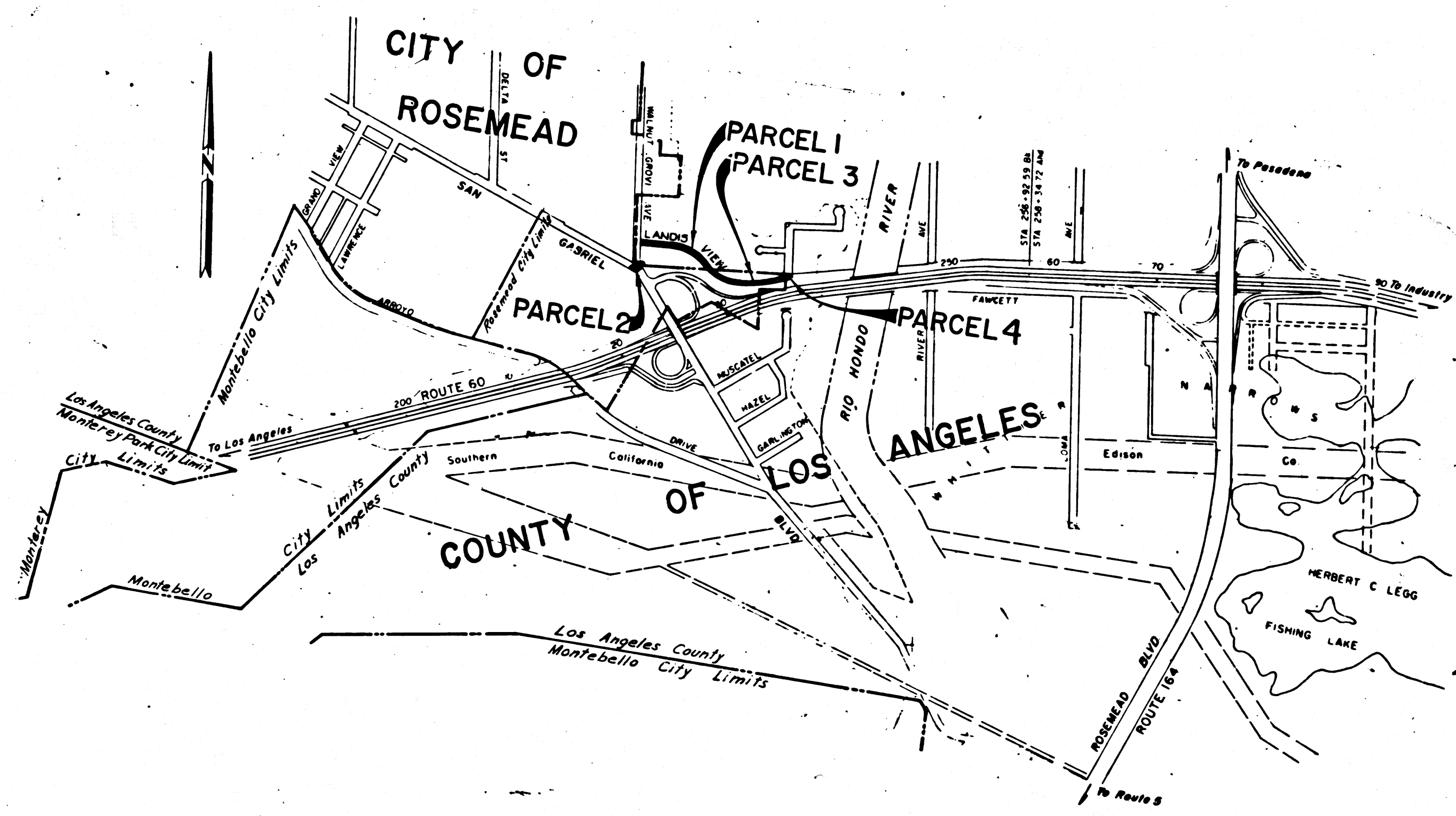
Art Hume
 DEPUTY DISTRICT ENGINEER
 May 21, 1969
 DATE

RIGHT OF WAY MAPS OF
STATE HIGHWAY

In Los Angeles County in and near Rosemead between
 Walnut Grove Avenue and 0.2 mile east of Walnut Grove Avenue

3165

FILED
 AT REQUEST OF
 DEPT. OF PUBLIC WORKS
 MAY 26, 1969
 4:55 P.M.
 IN BOOK 8
 AT PAGE 6
 OF STATE HIGHWAY MAPS
 FOR LOS ANGELES COUNTY, CALIF.
 RAY E. LEE
 COUNTY RECORDER
 BY *[Signature]*
 Deputy FILE



COUNTY ENGINEER'S COPY

8/47

FILED WITH LOS ANGELES COUNTY RECORDER, RAY E. LEE
MAY 26 1969

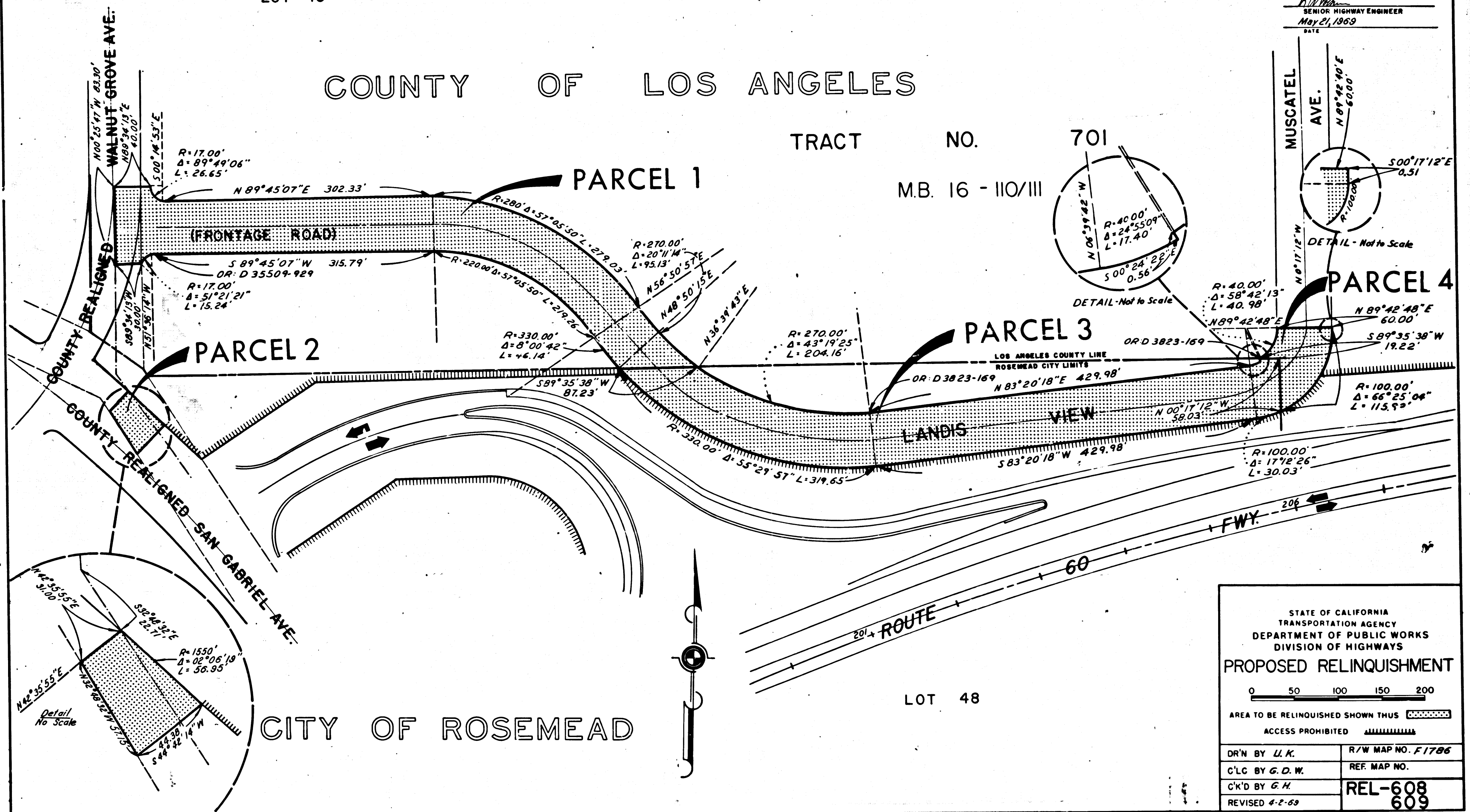
DIST	COUNTY	ROUTE	POST MILES	SHEET NO.	TOTAL SHEETS
07	L.A.	60	85/8.6	2	2

LOT 45

COUNTY OF LOS ANGELES

TRACT NO. 701

M.B. 16 - 110/III



STATE OF CALIFORNIA
TRANSPORTATION AGENCY
DEPARTMENT OF PUBLIC WORKS
DIVISION OF HIGHWAYS

PROPOSED RELINQUISHMENT

0 50 100 150 200

AREA TO BE RELINQUISHED SHOWN THUS [Hatched Box]

ACCESS PROHIBITED [Dashed Line]

DR'N BY U.K.	R/W MAP NO. F1786
C'LC BY G.D.W.	REF. MAP NO.
C'K'D BY G.H.	REL-608
REVISED 4-2-69	609

COUNTY ENGINEER'S COPY