

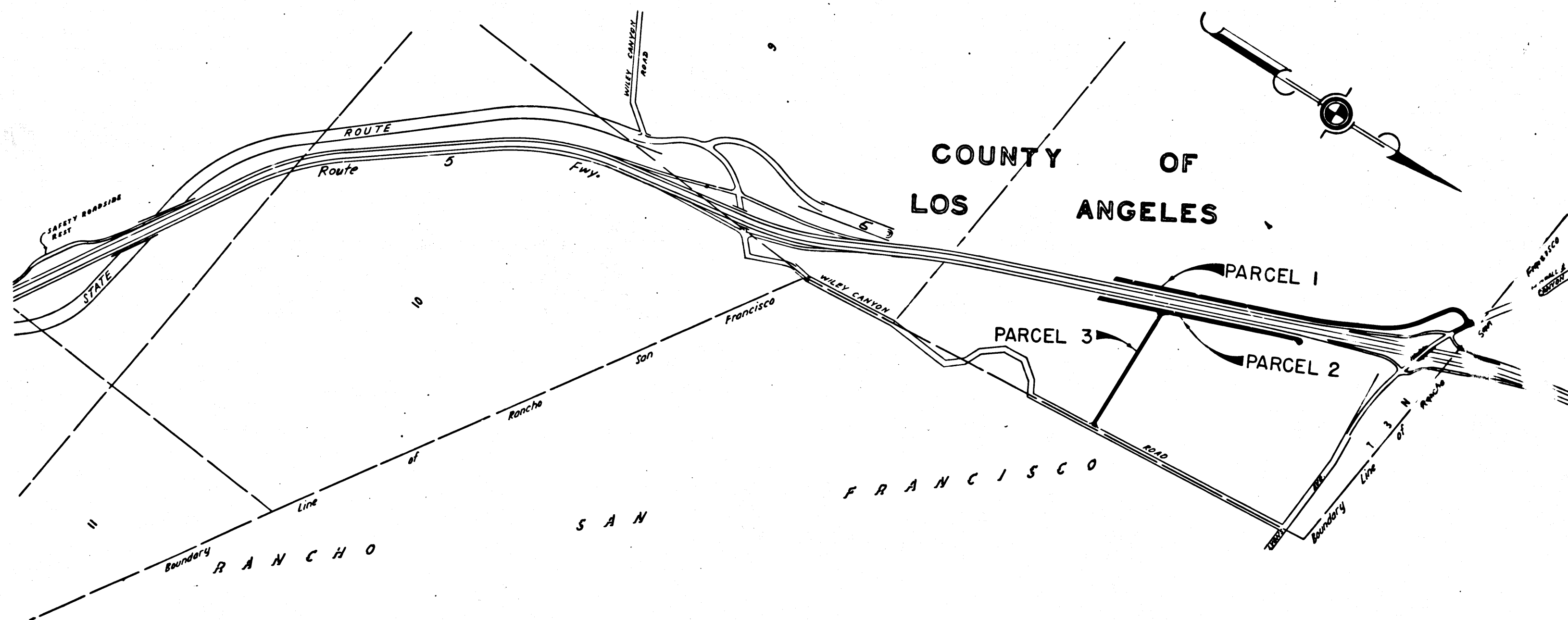
DIST	COUNTY	ROUTE	POST MILES	SHEET NO.	TOTAL SHEETS
07	L.A.	5	49.6503	1	3

STATE OF CALIFORNIA
 TRANSPORTATION AGENCY
 DEPARTMENT OF PUBLIC WORKS
 DIVISION OF HIGHWAYS

W.C. Dennis
 DEPUTY DISTRICT ENGINEER
 June 11, 1969
 DATE

RIGHT OF WAY MAPS OF
STATE HIGHWAY

IN LOS ANGELES COUNTY BETWEEN WILEY CANYON ROAD AND
 NEWHALL - PICO CANYON ROAD



3235

FILED
 AT REQUEST OF
 DEPT. OF PUBLIC WORKS
 JUNE 23, 1969
 2:27 PM
 IN BOOK 2
 AT PAGE 8
 OF STATE HIGHWAY MAPS
 LOS ANGELES COUNTY, CALIF.
 RAY E. LEE
 COUNTY ENGINEER
 Deputy
W.C. Dennis

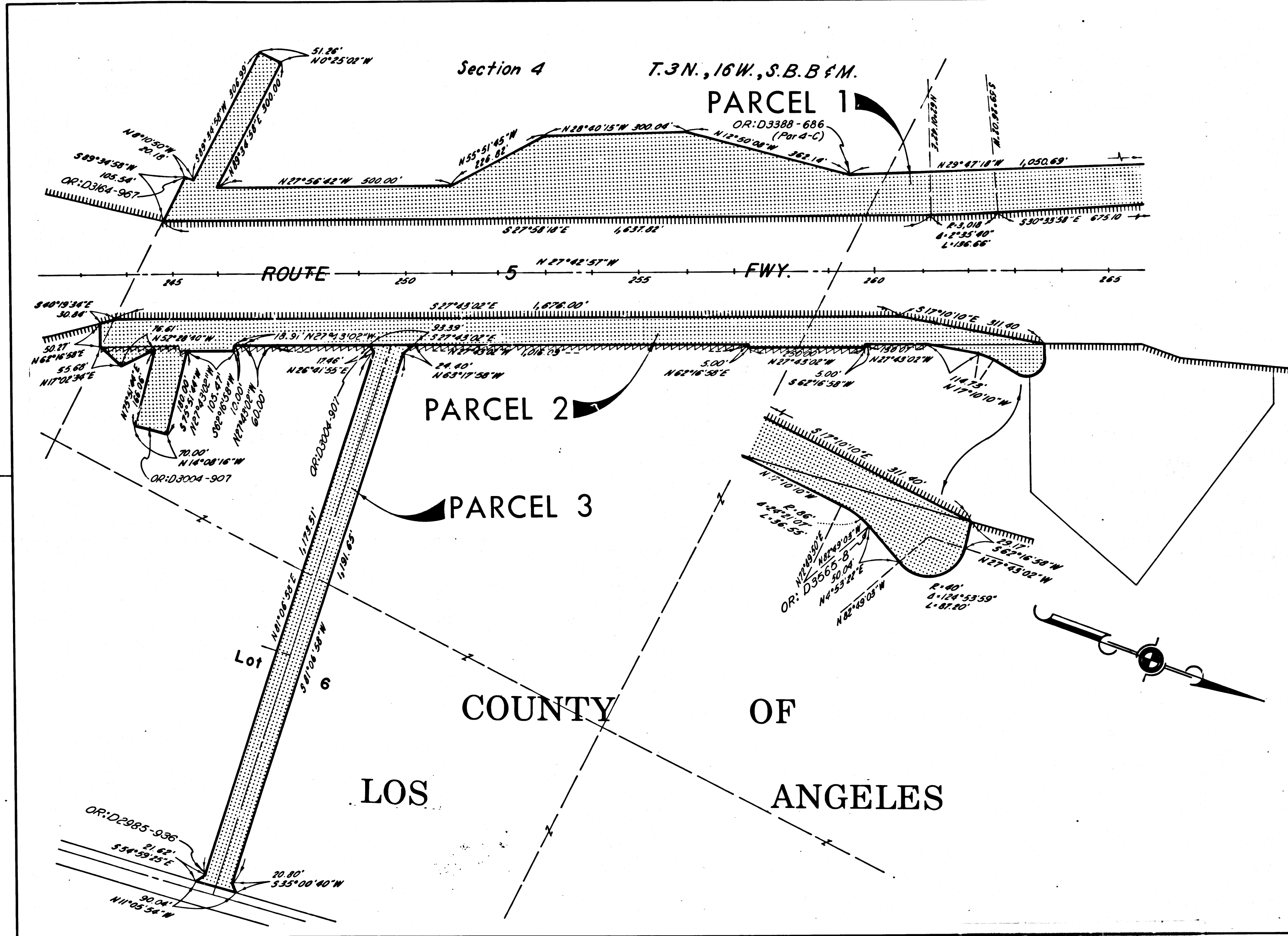
STATE OF CALIFORNIA
 TRANSPORTATION AGENCY
 DEPARTMENT OF PUBLIC WORKS
 DIVISION OF HIGHWAYS
PROPOSED RELINQUISHMENT

SCALE
 0 600 1200 1800 2400

DR'N BY <i>M.A.C.</i>	R/W MAP NO. <i>F-1306, F-1307</i>
C'LC BY <i>E.J.P.</i>	REF. MAP NO.
C'KD BY <i>S.L.T.</i>	REL-602
REVISED	

DIST	COUNTY	ROUTE	POST MILES	SHEET NO.	TOTAL SHEETS
07	L.A.	5	49.6/50.3	2	3

R.W. Felt
 SENIOR HIGHWAY ENGINEER
 DATE June 11, 1969
 FILED WITH LOS ANGELES COUNTY RECORDER, RAY E. LEE
 JUN 20 1969



STATE OF CALIFORNIA
 TRANSPORTATION AGENCY
 DEPARTMENT OF PUBLIC WORKS
 DIVISION OF HIGHWAYS

PROPOSED RELINQUISHMENT

0 100 200 300 400

AREA TO BE RELINQUISHED SHOWN THUS [stippled pattern]

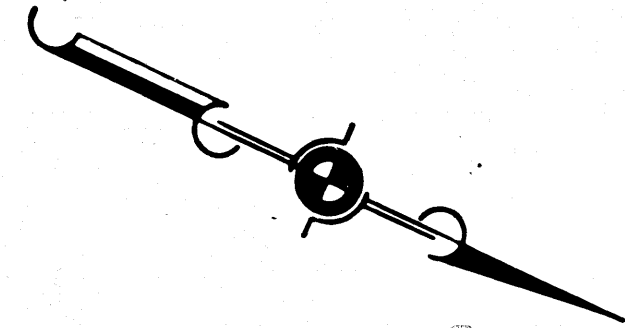
ACCESS RIGHTS TO BE RELINQUISHED SHOWN THUS [dashed line pattern]

ACCESS PROHIBITED [solid line pattern]

DR'N BY M.A.C.	R/W MAP NO. F-1306, 1/307
C'LC BY E.J.P.	REF. MAP NO.
C'D BY S.L.T.	REL-602
REVISED	

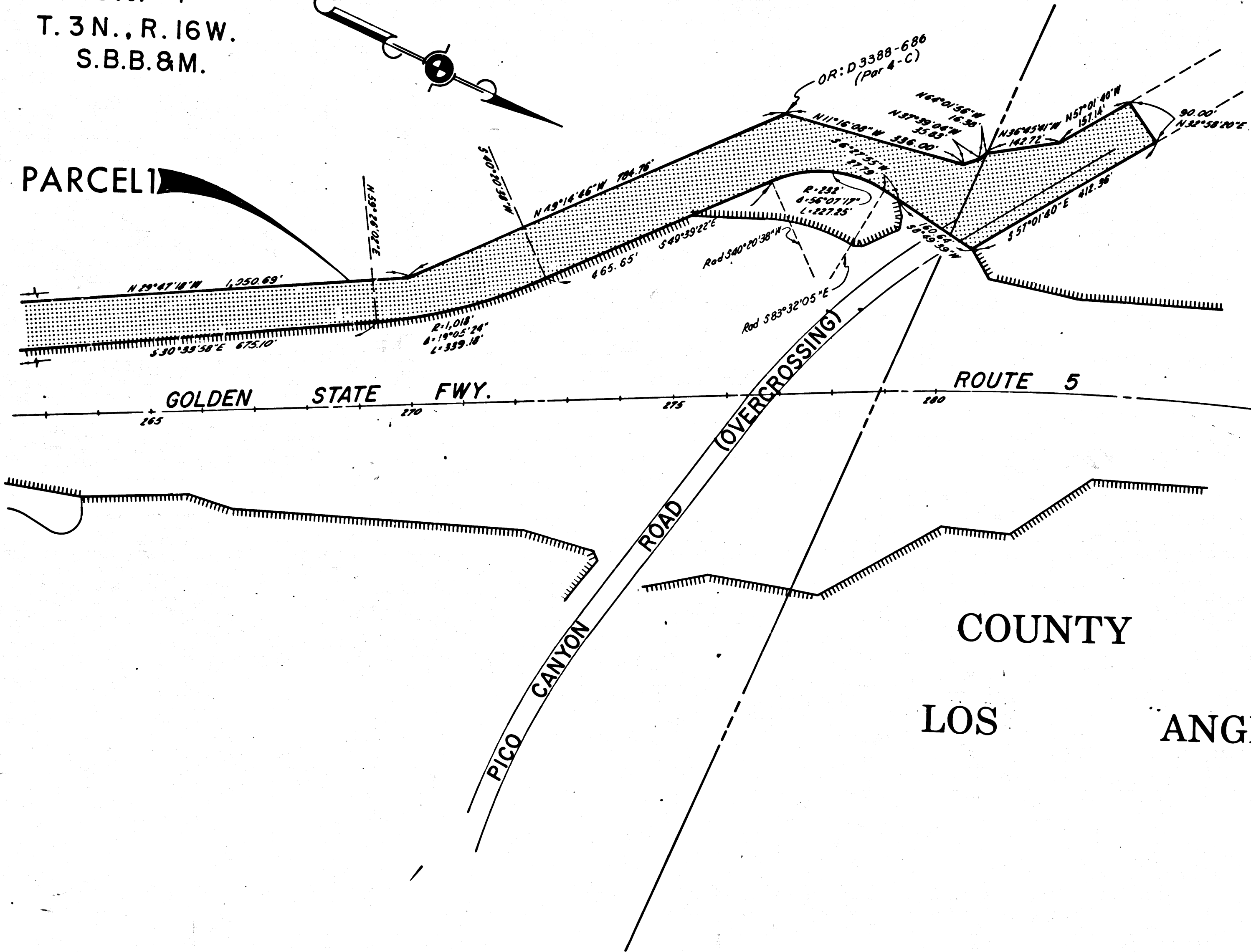
DIST	COUNTY	ROUTE	POST MILE	SHEET NO.	TOTAL SHEETS
07	L.A.	5	42.6/523	3	3

Sec. 4
T. 3 N., R. 16 W.
S.B.B. & M.



R.W. Felt
SENIOR HIGHWAY ENGINEER
June 11, 1969
DATE

FILED WITH LOS ANGELES
COUNTY RECORDER, RAY E. LEE
JUN 22 1969



COUNTY OF
LOS ANGELES

STATE OF CALIFORNIA
TRANSPORTATION AGENCY
DEPARTMENT OF PUBLIC WORKS
DIVISION OF HIGHWAYS

PROPOSED RELINQUISHMENT

0 100 200 300 400

AREA TO BE RELINQUISHED SHOWN THUS

ACCESS PROHIBITED

DR'N BY <i>M.A.C.</i>	R/W MAP NO. <i>F-1307</i>
C'LC BY <i>E.J.P.</i>	REF. MAP NO.
C'K'D BY <i>S.L.T.</i>	REL-602
REVISED	