

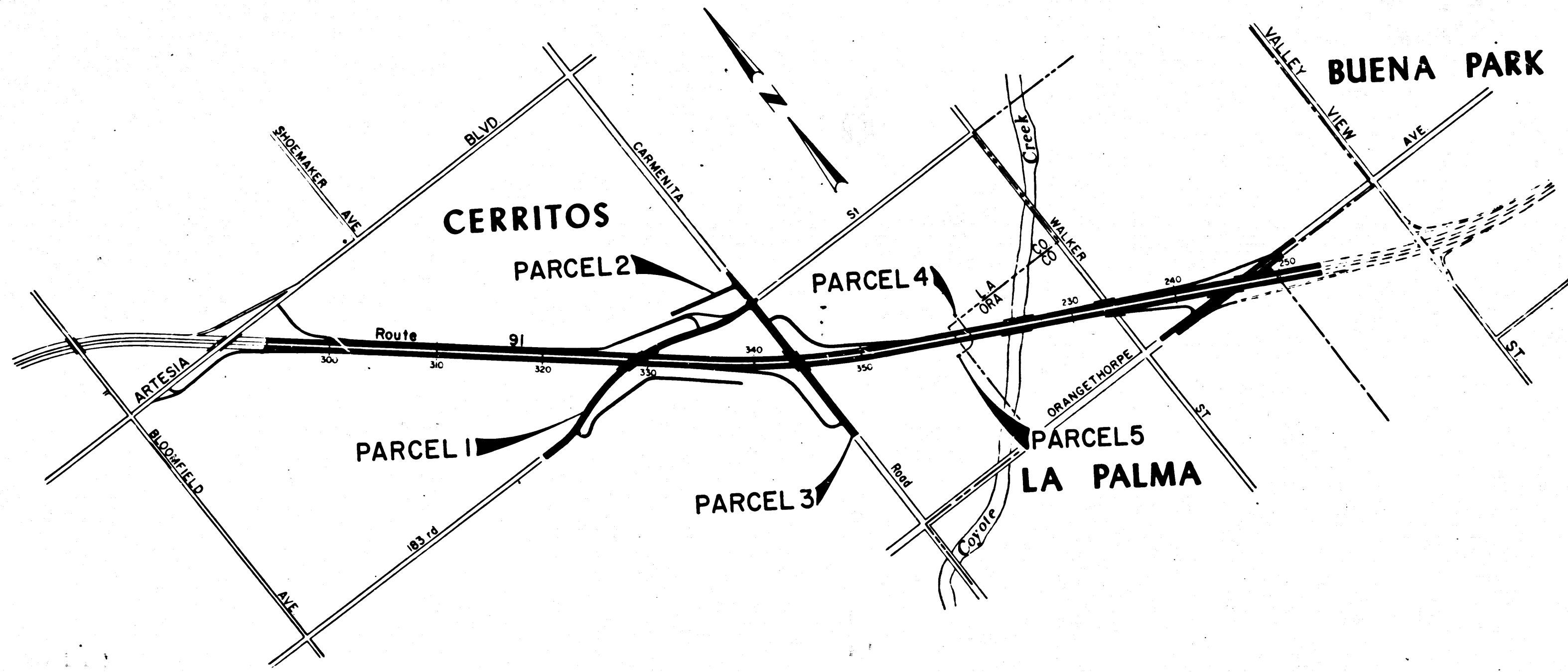
DIST	COUNTY	ROUTE	POST MILES	SHEET NO.	TOTAL SHEETS
07	L.A.	91	20.0/20.7	1	5

A. H. Hinkel
 DEPUTY DISTRICT ENGINEER
 DATE June 29, 1969

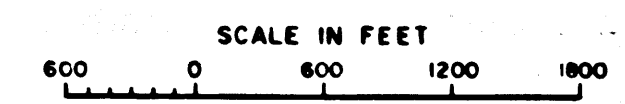
2197
 FILED
 AT REQUEST OF
 DEPT. OF PUBLIC WORKS
 JULY 9, 1969
 35 POST 11AM
 COUNTY RECORDER
 Dandy Free

STATE OF CALIFORNIA
 TRANSPORTATION AGENCY
 DEPARTMENT OF PUBLIC WORKS
 DIVISION OF HIGHWAYS

RIGHT OF WAY MAPS OF
STATE HIGHWAY
 In Los Angeles County on Route 91 Between
 0.7 mi. east of Artesia Blvd. and the west
 boundary of Orange County



STATE OF CALIFORNIA
 TRANSPORTATION AGENCY
 DEPARTMENT OF PUBLIC WORKS
 DIVISION OF HIGHWAYS
PROPOSED RELINQUISHMENT



DR'N BY	M.A.C.	R/W MAP NO.	F-1097 F-1098
C'LC BY	G.H.	REF. MAP NO.	180-12
C'K'D BY	G.D.W.	REL-	717
REVISED			

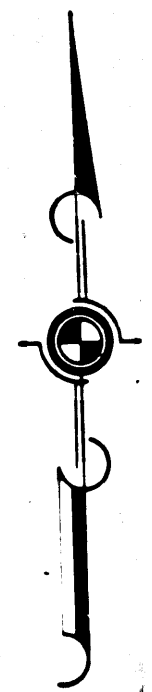
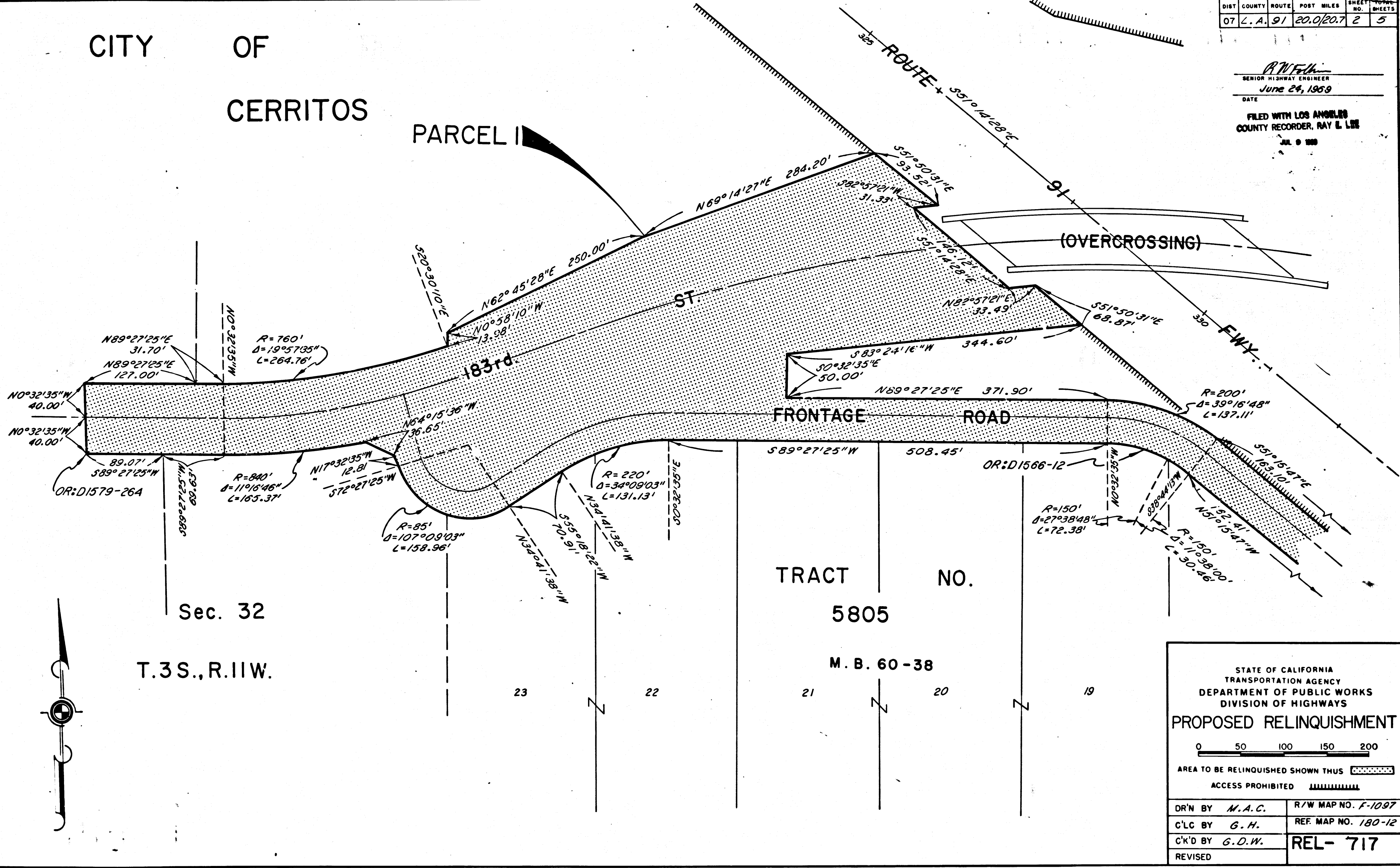
DIST	COUNTY	ROUTE	POST MILES	SHEET NO.	TOTAL SHEETS
07	L. A.	91	20.0/20.7	2	5

CITY OF CERRITOS

PARCEL I

R. W. Felt
SENIOR HIGHWAY ENGINEER
June 24, 1959
DATE

FILED WITH LOS ANGELES COUNTY RECORDER, RAY E. LEE
JUL 9 1959



STATE OF CALIFORNIA
TRANSPORTATION AGENCY
DEPARTMENT OF PUBLIC WORKS
DIVISION OF HIGHWAYS

PROPOSED RELINQUISHMENT

0 50 100 150 200

AREA TO BE RELINQUISHED SHOWN THUS [stippled pattern]

ACCESS PROHIBITED [hatched pattern]

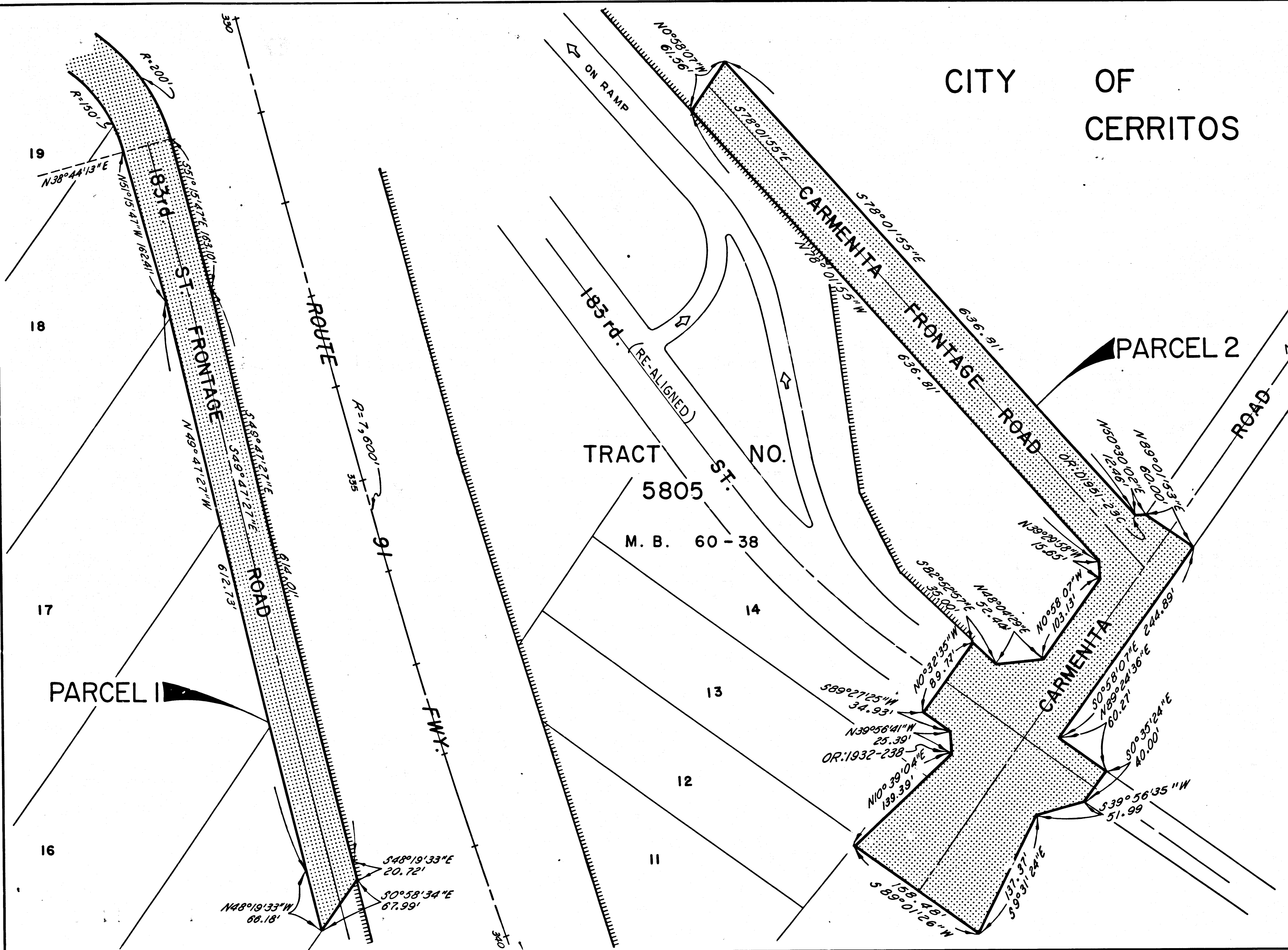
DR'N BY	M.A.C.	R/W MAP NO.	F-1097
C'LC BY	G.H.	REF. MAP NO.	180-12
C'K'D BY	G.D.W.	REL-	717
REVISED			

DIST	COUNTY	ROUTE	POST MILES	SHEET NO.	TOTAL SHEETS
07	L.A.	91	20.0207	3	5

R.W. Fell
 SENIOR HIGHWAY ENGINEER
 June 24, 1969
 DATE

FILED WITH LOS ANGELES
 COUNTY RECORDER, RAY E. LEE
 JUL 9 1969

CITY OF CERRITOS



STATE OF CALIFORNIA
 TRANSPORTATION AGENCY
 DEPARTMENT OF PUBLIC WORKS
 DIVISION OF HIGHWAYS

PROPOSED RELINQUISHMENT

0 50 100 150 200

AREA TO BE RELINQUISHED SHOWN THUS

ACCESS PROHIBITED

DR'N BY	M.A.C.	R/W MAP NO.	F-1097
C'LC BY	G.H.	REF. MAP NO.	F-1098
C'K'D BY	G.D.W.	REL-	717
REVISED			

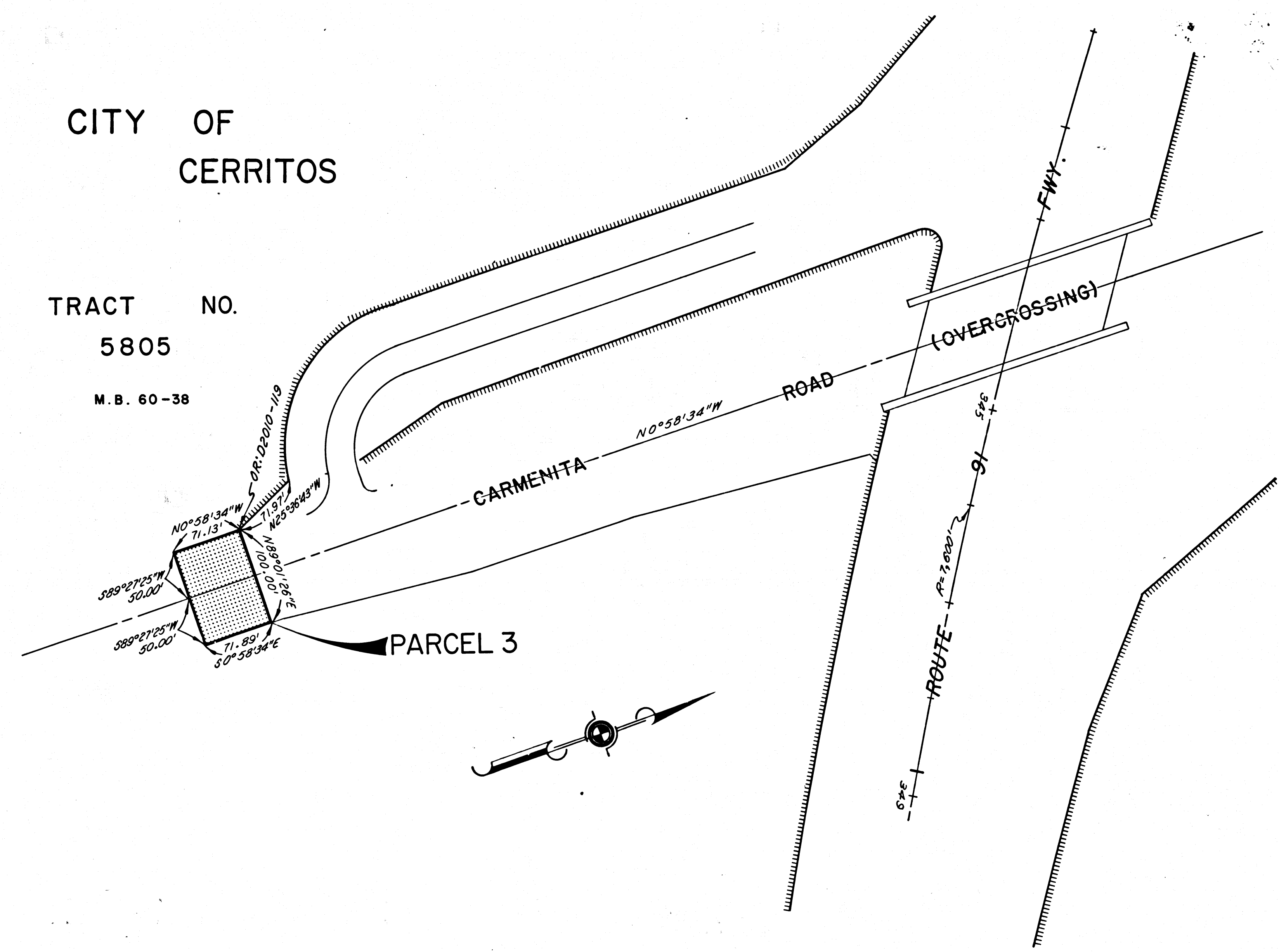
DIST.	COUNTY	ROUTE	POST MILES	SHEET NO.	TOTAL SHEETS
07	L.A.	91	20.0/20.7	4	5

R.W.F. Mc...
 SENIOR HIGHWAY ENGINEER
 June 24, 1969
 DATE

FILED WITH LOS ANGELES
 COUNTY RECORDER, RAY E. LEE
 JUL 9 1969

CITY OF
 CERRITOS

TRACT NO.
 5805
 M.B. 60-38



STATE OF CALIFORNIA
 TRANSPORTATION AGENCY
 DEPARTMENT OF PUBLIC WORKS
 DIVISION OF HIGHWAYS

PROPOSED RELINQUISHMENT

0 50 100 150 200

AREA TO BE RELINQUISHED SHOWN THUS

ACCESS PROHIBITED

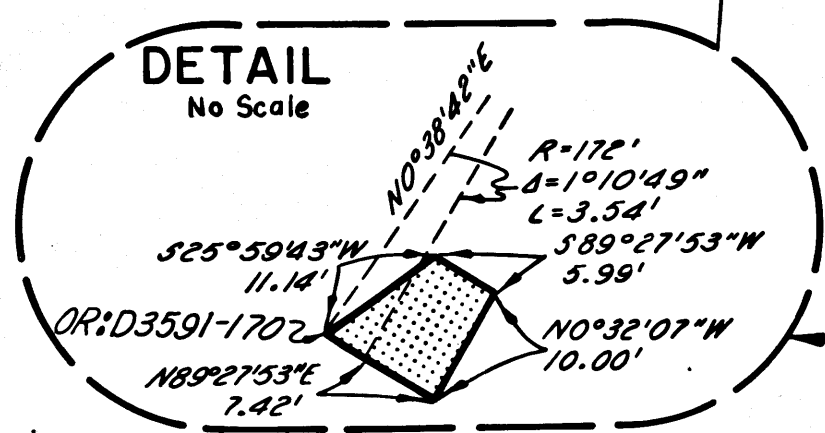
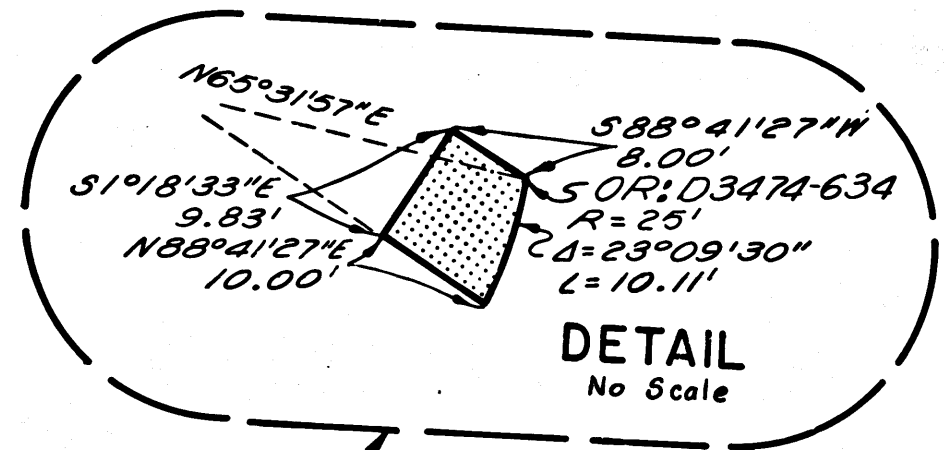
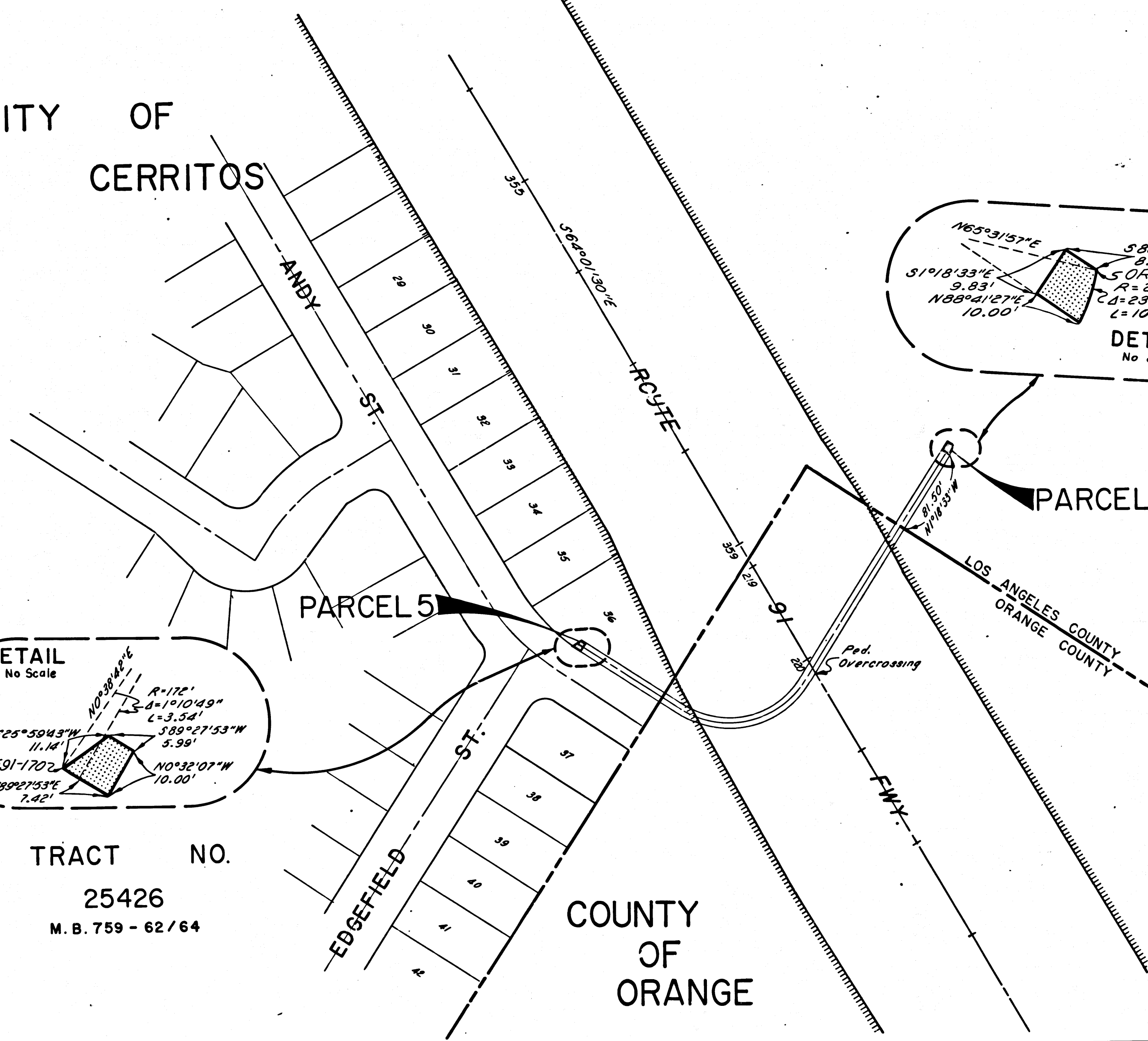
DR'N BY M.A.C.	R/W MAP NO. F-1097
C'LC BY G.H.	F-1098
C'K'D BY G.D.W.	REF. MAP NO. 180-12
REVISED	REL-717

FILED WITH LOS ANGELES COUNTY RECORDER, RAY E. LEE

DIST	COUNTY	ROUTE	POST MILES	SHEET NO.	TOTAL SHEETS
07	L.A.	91	20.0/20.7	5	5

R. W. Lee
 SENIOR HIGHWAY ENGINEER
 June 24, 1960
 DATE

CITY OF CERRITOS



TRACT NO.
 25426
 M. B. 759 - 62/64

COUNTY OF ORANGE

RANCHO LOS COYOTES
 OR: 41819 - 141

STATE OF CALIFORNIA
 TRANSPORTATION AGENCY
 DEPARTMENT OF PUBLIC WORKS
 DIVISION OF HIGHWAYS

PROPOSED RELINQUISHMENT

0 50 100 150 200

AREA TO BE RELINQUISHED SHOWN THUS

ACCESS PROHIBITED

DR'N BY	M.A.C.	R/W MAP NO.	F-1098
C'LC BY	G.H.	REF. MAP NO.	180-12
C'K'D BY	G.D.W.	REL-	717
REVISED			

