

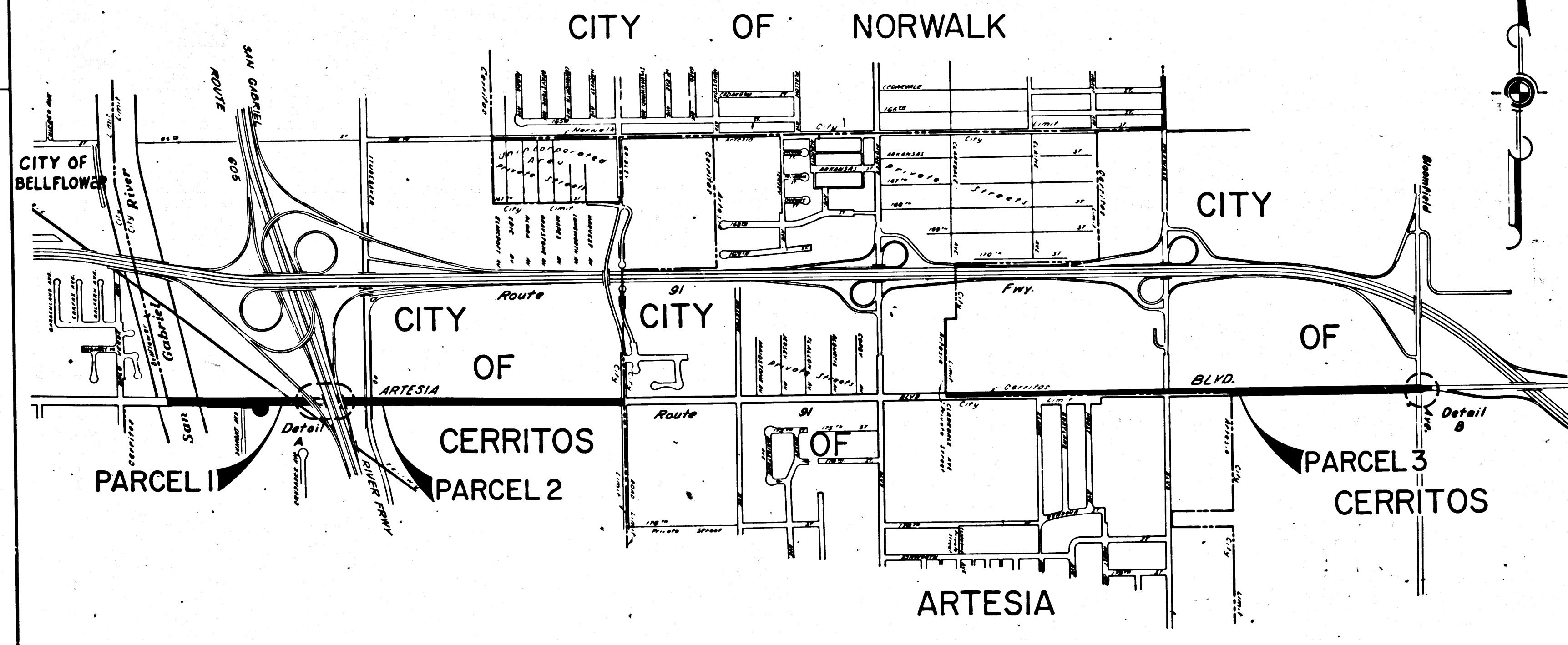
DIST	COUNTY	ROUTE	POST MILES	SHEET NO.	TOTAL SHEETS
07	L.A.	91	16.6/19.1	1	2

STATE OF CALIFORNIA  
 TRANSPORTATION AGENCY  
 DEPARTMENT OF PUBLIC WORKS  
 DIVISION OF HIGHWAYS

RIGHT OF WAY MAPS OF  
**STATE HIGHWAY**  
 In the City of Cerritos on Artesia Blvd.(Route 91)  
 between E. City Limit of Bellflower and  
 Bloomfield Ave.

*A. H. Huelsh*  
 DEPUTY DISTRICT ENGINEER  
 June 24, 1969  
 DATE

2198  
 FILED  
 AT REQUEST OF  
 DEPT. OF PUBLIC WORKS  
 JULY 9, 1969  
 35 PM 11AM  
 IN BOOK 8  
 OF STATE HIGHWAY MAPS  
 LOS ANGELES COUNTY, CALIF.  
 RAY E. LEE  
 COUNTY REGISTRAR  
 Free



STATE OF CALIFORNIA  
 TRANSPORTATION AGENCY  
 DEPARTMENT OF PUBLIC WORKS  
 DIVISION OF HIGHWAYS

**PROPOSED RELINQUISHMENT**

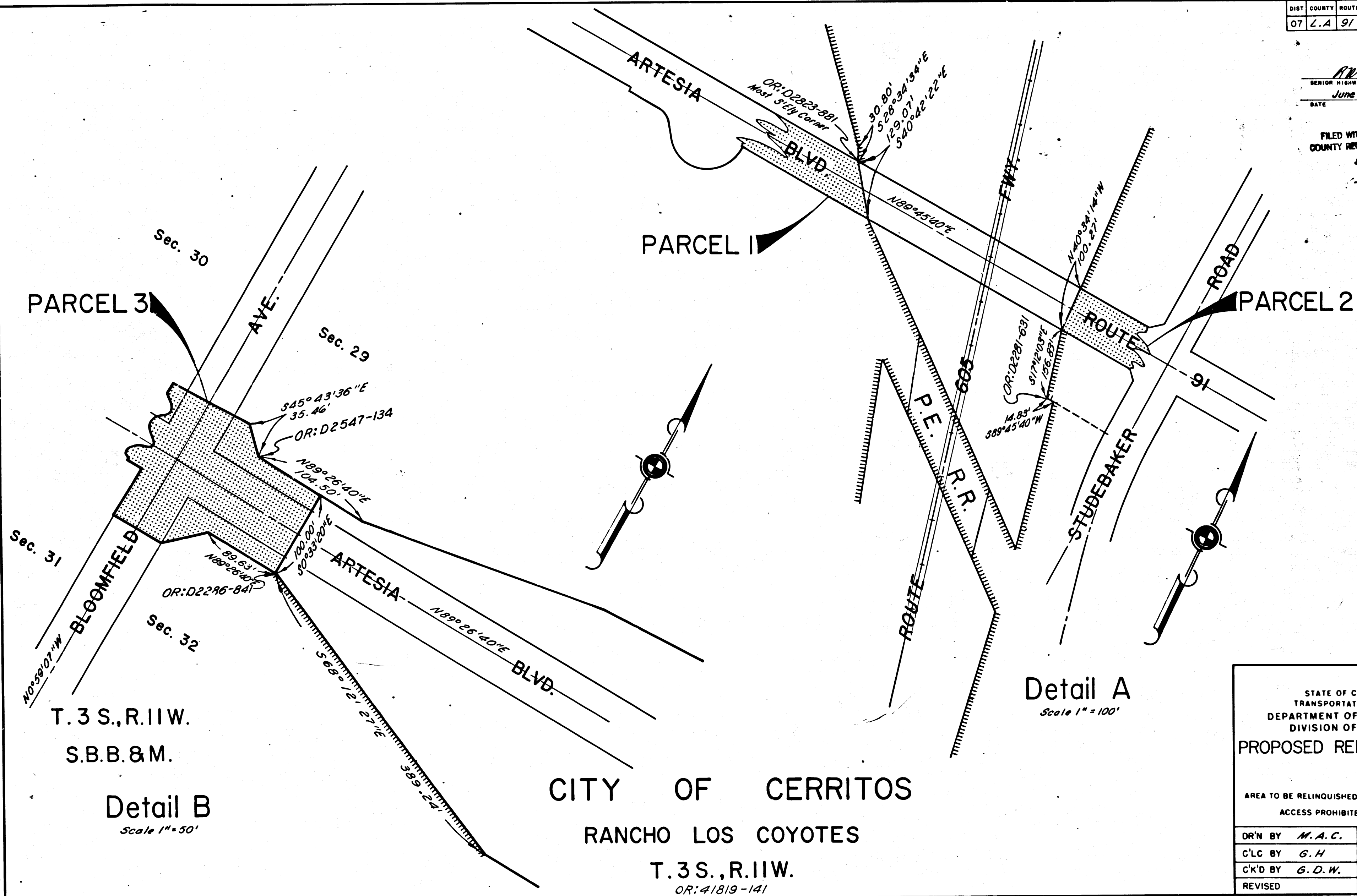
SCALE  
 0 600 1200 1800 2400

DR'N BY <i>M.A.C.</i>	R/W MAP NO. <i>F-1007</i>
C'LC BY <i>G.H.</i>	REF. MAP NO. <i>F-1957</i>
C'K'D BY <i>G.D.W.</i>	<b>REL-732</b>
REVISED	

DIST	COUNTY	ROUTE	POST MILES	SHEET NO.	TOTAL SHEETS
07	L.A.	91	16.6/19.1	2	2

*R.W. Felt*  
 SENIOR HIGHWAY ENGINEER  
 DATE June 24, 1969

FILED WITH LOS ANGELES  
 COUNTY RECORDER, RAY E. LEE  
 JUL 9 1969



Sec. 30  
 PARCEL 3  
 AVE.  
 Sec. 29  
 Sec. 31  
 BLOOMFIELD  
 Sec. 32  
 T. 3 S., R. I I W.  
 S. B. B. & M.  
 Detail B  
 Scale 1" = 50'

CITY OF CERRITOS  
 RANCHO LOS COYOTES  
 T. 3 S., R. I I W.  
 OR: 41819-141

Detail A  
 Scale 1" = 100'

STATE OF CALIFORNIA  
 TRANSPORTATION AGENCY  
 DEPARTMENT OF PUBLIC WORKS  
 DIVISION OF HIGHWAYS  
 PROPOSED RELINQUISHMENT

AREA TO BE RELINQUISHED SHOWN THUS

ACCESS PROHIBITED

DR'N BY	M. A. C.	R/W MAP NO.	F-1097
C'LC BY	G. H.	REF. MAP NO.	F-1257
C'K'D BY	G. D. W.	REL-	732
REVISED			