

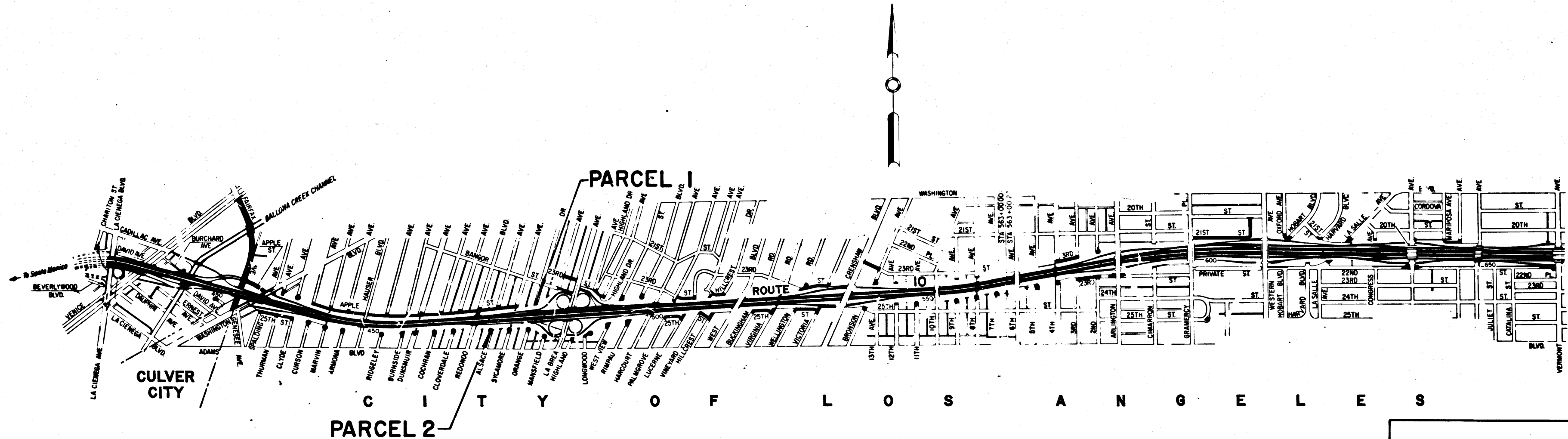
DIST	COUNTY	ROUTE	POST MILES	SHEET NO.	TOTAL SHEETS
07	L.A.	10	10.2-10.4	1	3

STATE OF CALIFORNIA
 TRANSPORTATION AGENCY
 DEPARTMENT OF PUBLIC WORKS
 DIVISION OF HIGHWAYS

A. L. Hamilton
 DEPUTY DISTRICT ENGINEER
 Aug. 18, 1969
 DATE

RIGHT OF WAY MAPS OF
STATE HIGHWAY
 In the City of Los Angeles at Alsace Ave.
 and Orange Dr. Cul-de-sacs

2319
 FILED
 AT REQUEST OF
 DEPT. OF PUBLIC WORKS
 AUG. 26, 1969
 10:16 AM
 12 P.M.
 IN BOOK 8
 AT PAGE 23
 OF STATE HIGHWAY MAPS
 LOS ANGELES COUNTY, CALIF.
 RAY E. LEE
 COUNTY RECORDER
 Deputy
 Free



STATE OF CALIFORNIA
 TRANSPORTATION AGENCY
 DEPARTMENT OF PUBLIC WORKS
 DIVISION OF HIGHWAYS
PROPOSED RELINQUISHMENT

-SCALE-
 0 500 1000 2000 3000 FEET

DR'N BY <i>L.W.K.</i>	R/W MAP NO. <i>F-2023</i>
C'LC BY <i>G.D.W.</i>	REF. MAP NO.
C'K'D BY <i>G.H.</i>	REL-738
REVISED	

COUNTY ENGINEER'S COPY

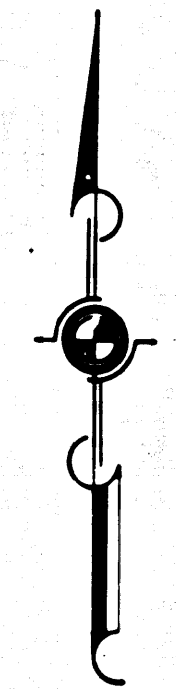
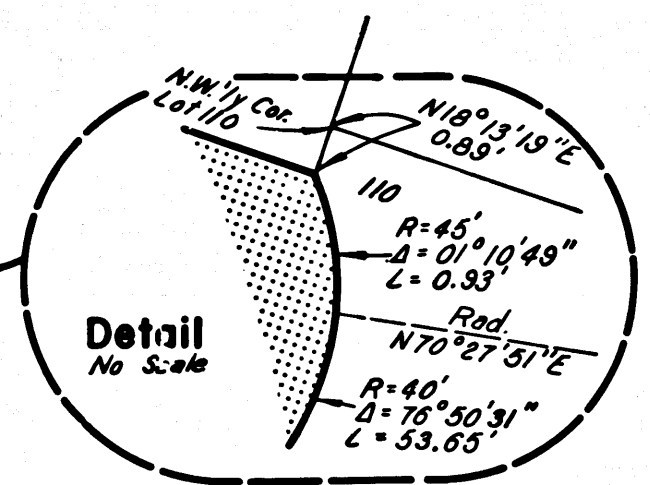
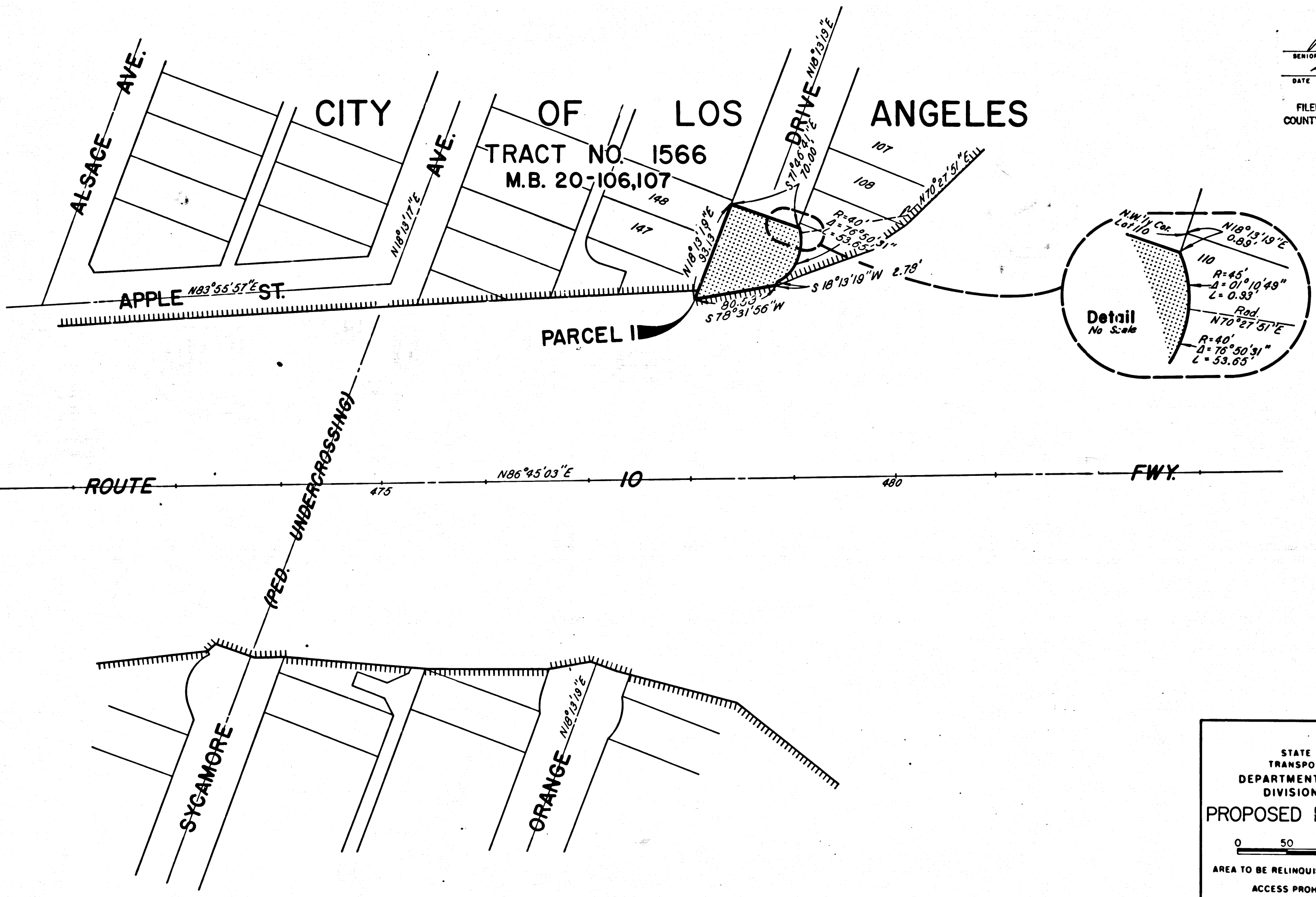
8/27-28

12/16

DIST	COUNTY	ROUTE	POST MILES	SHEET NO.	TOTAL SHEETS
07	L.A.	10	10.2-10.4	2	3

A.W. Felkin
 SENIOR HIGHWAY ENGINEER
 Aug. 18, 1969
 DATE

FILED WITH LOS ANGELES
 COUNTY RECORDER, RAY E. LEE
 AUG 25 1969



STATE OF CALIFORNIA
 TRANSPORTATION AGENCY
 DEPARTMENT OF PUBLIC WORKS
 DIVISION OF HIGHWAYS
PROPOSED RELINQUISHMENT

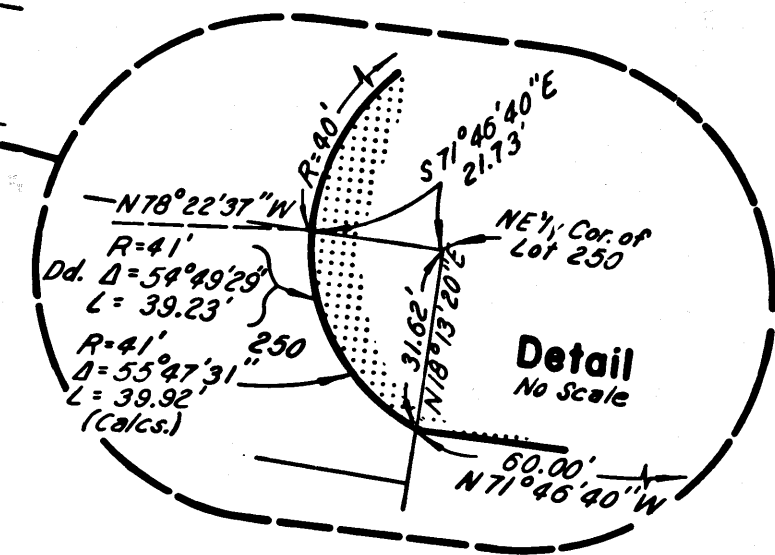
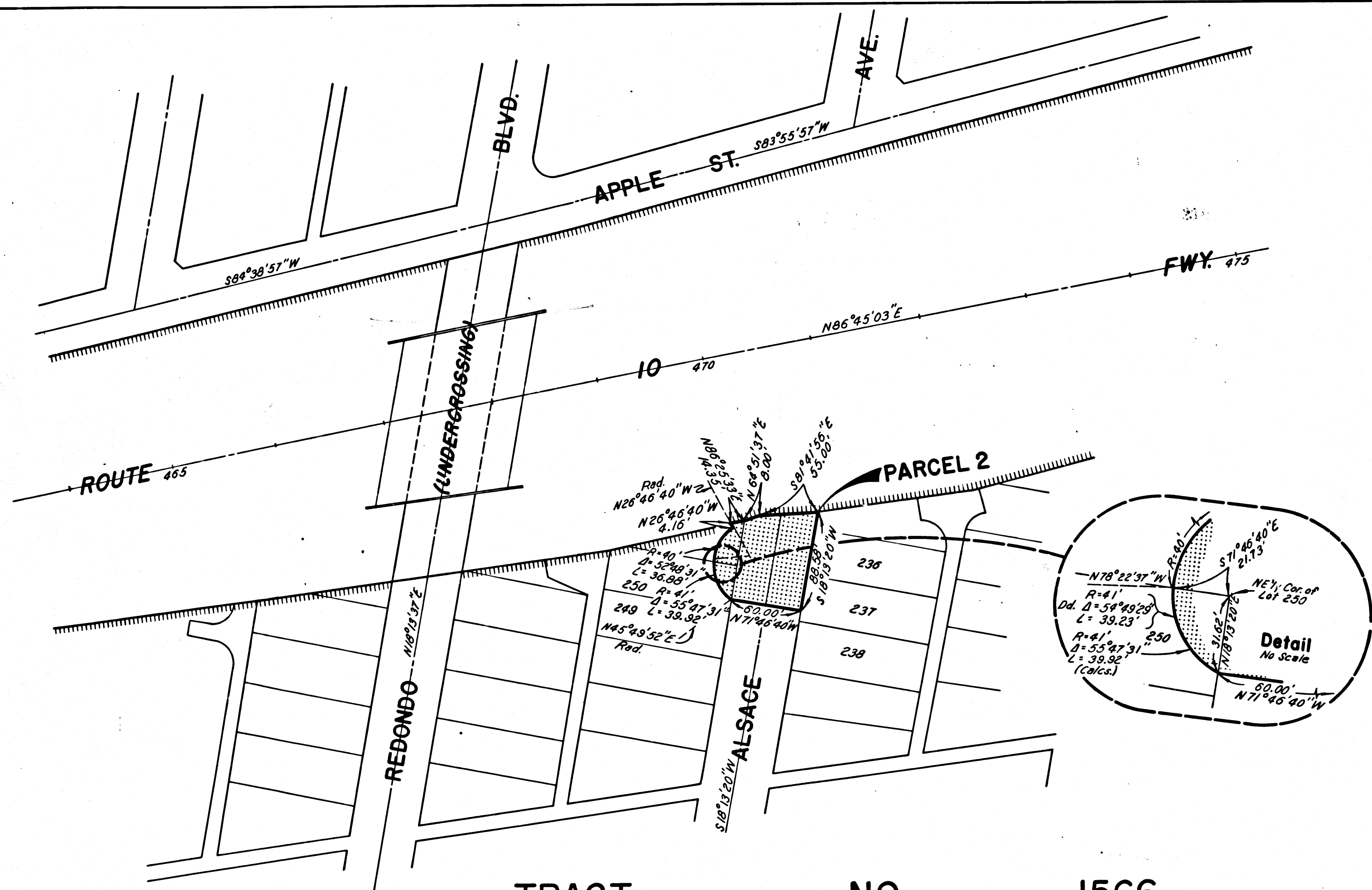
0 50 100 150 200
 AREA TO BE RELINQUISHED SHOWN THUS [Dotted Line]
 ACCESS PROHIBITED [Hatched Line]

DR'N BY <i>L.W.K.</i>	R/W MAP NO. <i>F2023</i>
C'LC BY <i>G.D.W.</i>	REF. MAP NO.
C'K'D BY <i>G.H.</i>	REL-738
REVISED	

DIST.	COUNTY	ROUTE	POST MILES	SHEET NO.	TOTAL SHEETS
07	L.A.	10	10.2-10.4	3	3

R.W.F.
 SENIOR HIGHWAY ENGINEER
 Aug. 18, 1969
 DATE

FILED WITH LOS ANGELES
 COUNTY RECORDER, RAY E. LEE
 AUG 26 1969



TRACT NO. 1566
 M.B. 20 - 106,107
 CITY OF LOS ANGELES

STATE OF CALIFORNIA
 TRANSPORTATION AGENCY
 DEPARTMENT OF PUBLIC WORKS
 DIVISION OF HIGHWAYS

PROPOSED RELINQUISHMENT

0 50 100 150 200

AREA TO BE RELINQUISHED SHOWN THUS

ACCESS PROHIBITED

DR'N BY <i>L.W.K.</i>	R/W MAP NO. <i>F-2023</i>
C'LC BY <i>G.D.W.</i>	REF. MAP NO.
C'K'D BY <i>G.H.</i>	REL-738
REVISED	