

DIST	COUNTY	ROUTE	POST MILES	SHEET NO.	TOTAL SHEETS
07	LA	134	5.177.4	1	1

STATE OF CALIFORNIA
 TRANSPORTATION AGENCY
 DEPARTMENT OF PUBLIC WORKS
 DIVISION OF HIGHWAYS

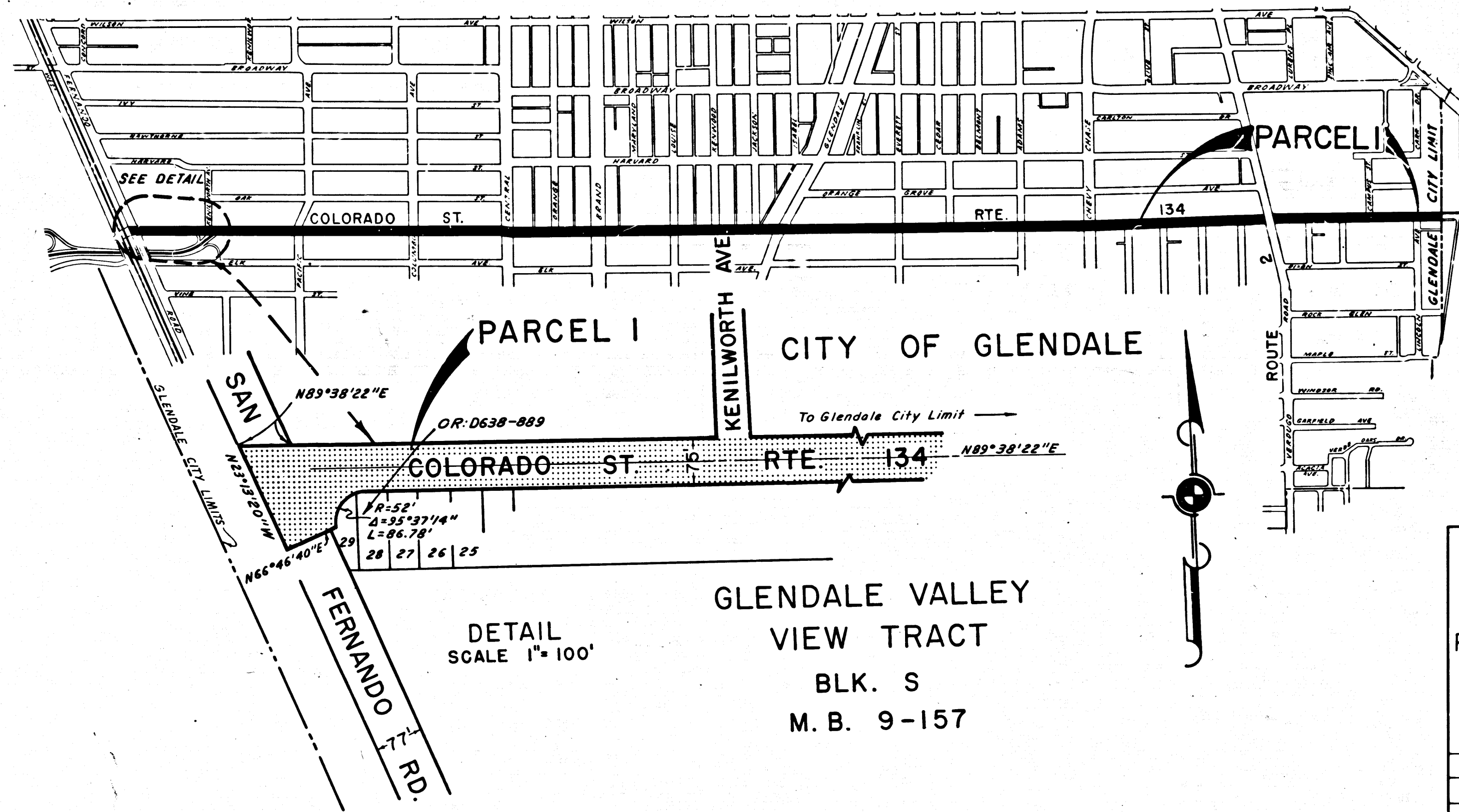
Alvin
 DEPUTY DISTRICT ENGINEER
 Aug. 27, 1969
 DATE

RIGHT OF WAY MAPS OF
STATE HIGHWAY

3284

FILED
 AT REQUEST OF
 DEPT. OF PUBLIC WORKS
 SEP. 2, 1969
 9 31 P.M.
 IN BOOK 8
 AT PAGE 26
 OF STATE HIGHWAY MAPS
 LOS ANGELES COUNTY, CALIF.
 RAY E. LEE
 COUNTY ENGINEER
Ray E. Lee Free
 Deputy

IN THE COUNTY OF LOS ANGELES BETWEEN SAN FERNANDO
 ROAD AND THE EASTERLY CITY LIMIT OF GLENDALE



DETAIL
 SCALE 1"=100'

GLENDALE VALLEY
 VIEW TRACT
 BLK. S
 M. B. 9-157

STATE OF CALIFORNIA
 TRANSPORTATION AGENCY
 DEPARTMENT OF PUBLIC WORKS
 DIVISION OF HIGHWAYS
PROPOSED RELINQUISHMENT

SCALE
 0 600 1200 1800 2400

DR'N BY <i>L. S.</i>	R/W MAP NO. <i>F-1160</i>
C'LC BY <i>G.D.W.</i>	REF. MAP NO.
C'K'D BY <i>G.H.</i>	REL-703
REVISED <i>7-22-69</i>	

8/26

COUNTY ENGINEER'S COPY