

DIST	COUNTY	ROUTE	POST MILES	SHEET NO.	TOTAL SHEETS
07	LA	5	46.0/49.7	1	7

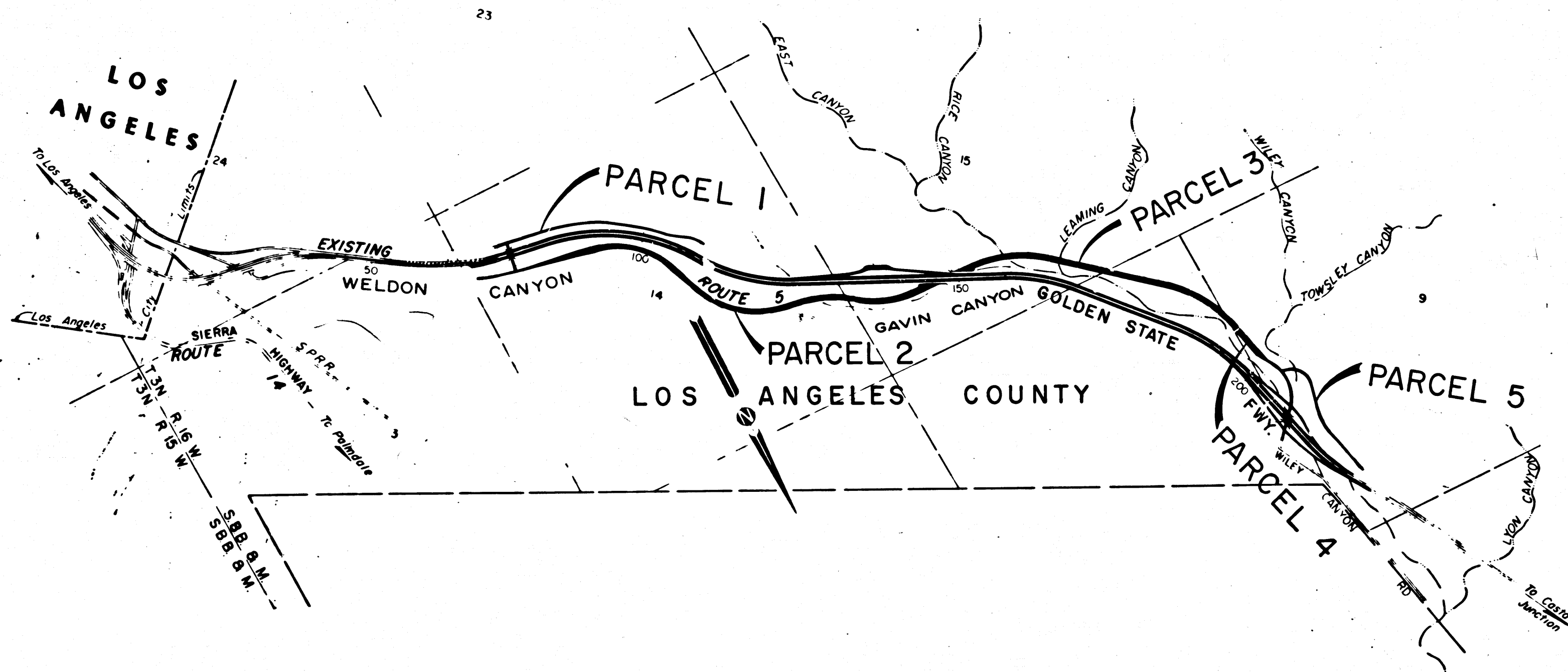
STATE OF CALIFORNIA
 TRANSPORTATION AGENCY
 DEPARTMENT OF PUBLIC WORKS
 DIVISION OF HIGHWAYS

A. H. Hummel
 DEPUTY DISTRICT ENGINEER
 Aug. 22, 1969
 DATE

RIGHT OF WAY MAPS OF
STATE HIGHWAY

In Los Angeles County between 1.1 miles north and
 4.1 miles north of Route 14 north of Los Angeles

2573
 FILED
 AT REQUEST OF
 DEPT. OF PUBLIC WORKS
 SEP. 16, 1969
 5:01 P.M.
 IN BOOK 8
 AT PAGE 27
 OF STATE HIGHWAY MAPS
 LOS ANGELES COUNTY, CALIF.
 RAY E. LEE
 COUNTY RECORDER
 BY *[Signature]*
 Deputy Free



INTERSTATE
 STATE OF CALIFORNIA
 TRANSPORTATION AGENCY
 DEPARTMENT OF PUBLIC WORKS
 DIVISION OF HIGHWAYS
PROPOSED RELINQUISHMENT

0 1000 2000 3000 4000

DR'N BY L.S.	R/W MAP NO. F-1305
C'LC BY E.J.P.	F-1306
C'K'D BY S.L.T.	REF. MAP NO. 166-13
REVISED	REL-585

COUNTY ENGINEER'S COPY

8/27

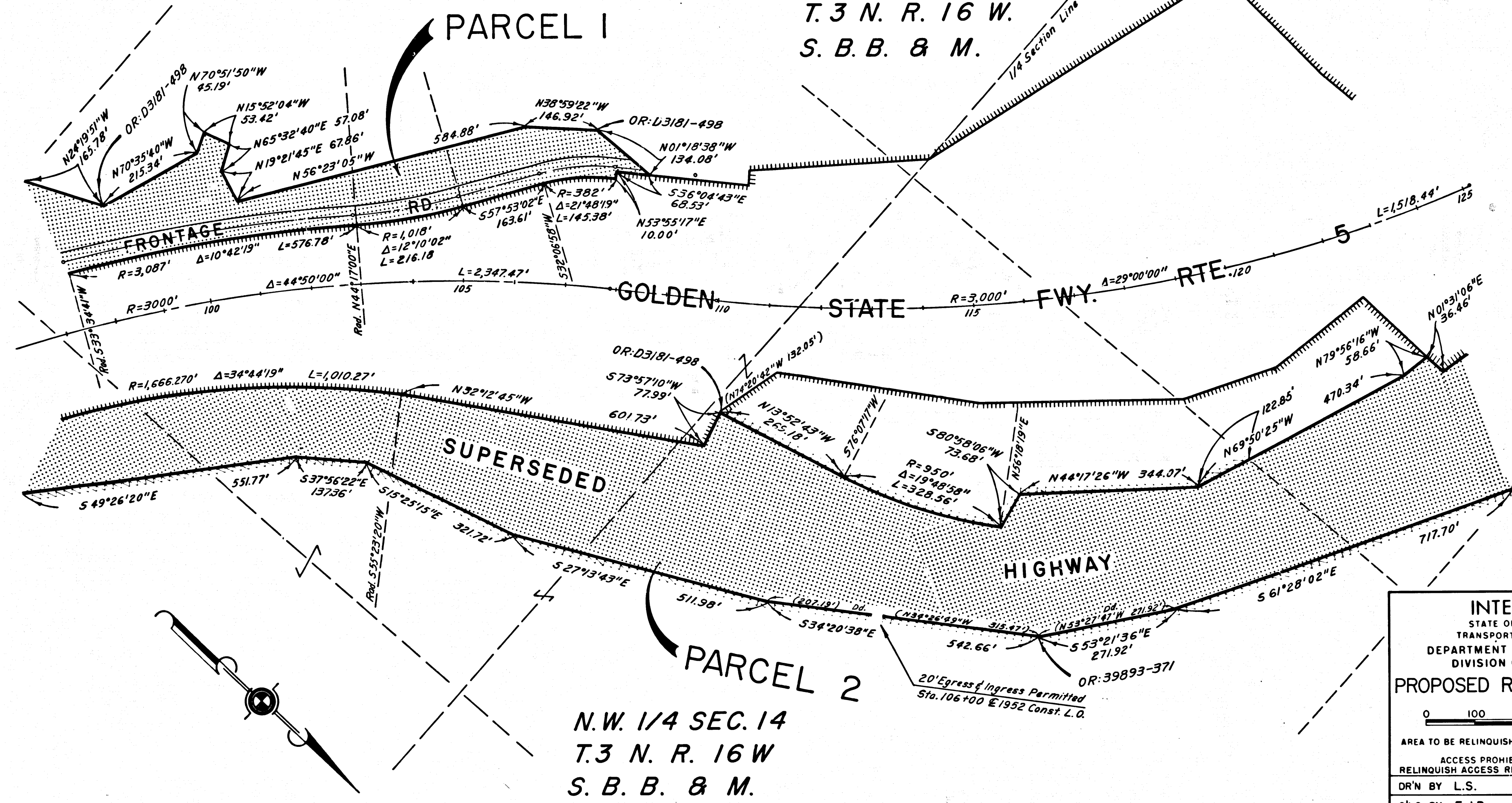
DIST	COUNTY	ROUTE	POST MILES	SHEET NO.	TOTAL SHEETS
07	LA	5	46.0/49.7	3	7

COUNTY OF LOS ANGELES

R.W. Felt
 SENIOR HIGHWAY ENGINEER
 DATE Aug. 22, 1969

FILED WITH LOS ANGELES
 COUNTY RECORDER, RAY E. LEE
 SEP 16 1969

S.W. 1/4 SEC. 14
 T.3 N. R. 16 W.
 S. B. B. & M.



N.W. 1/4 SEC. 14
 T.3 N. R. 16 W
 S. B. B. & M.

INTERSTATE
 STATE OF CALIFORNIA
 TRANSPORTATION AGENCY
 DEPARTMENT OF PUBLIC WORKS
 DIVISION OF HIGHWAYS

PROPOSED RELINQUISHMENT

0 100 200 300 400

AREA TO BE RELINQUISHED SHOWN THUS [Stippled Box]

ACCESS PROHIBITED [Wavy Line]

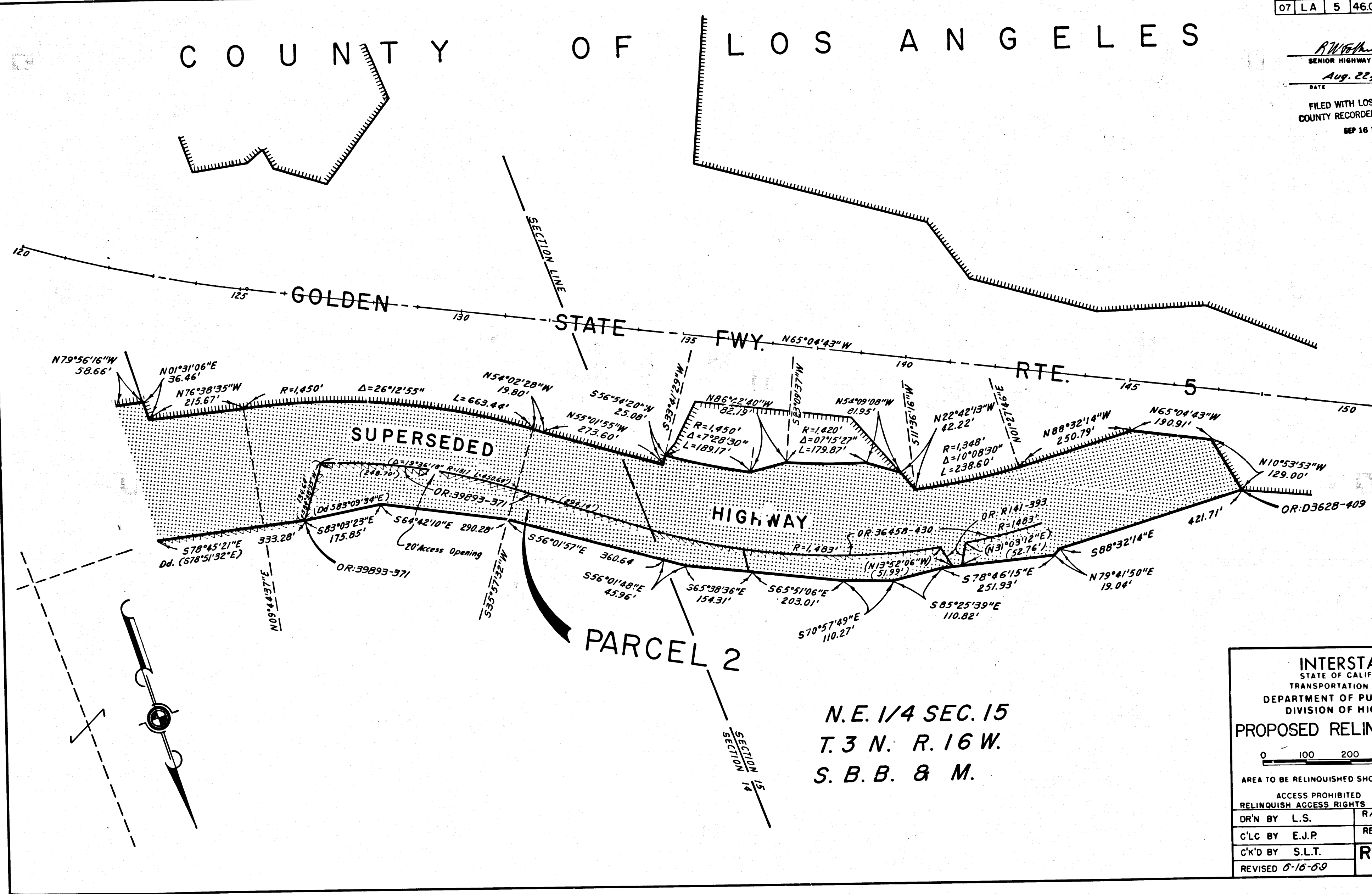
RELINQUISH ACCESS RIGHTS [Wavy Line]

DR'N BY L.S.	R/W MAP NO. F-1305
C'LC BY E.J.P.	REF. MAP NO. 166-13
C'K'D BY S.L.T.	REL-585
REVISED 6-16-69	

DIST	COUNTY	ROUTE	POST MILES	SHEET NO.	TOTAL SHEETS
07	LA	5	46.0/49.7	4	7

COUNTY OF LOS ANGELES

R.W. Keith
 SENIOR HIGHWAY ENGINEER
 Aug. 22, 1969
 DATE
 FILED WITH LOS ANGELES
 COUNTY RECORDER, RAY E. LEE
 SEP 16 1969



INTERSTATE
 STATE OF CALIFORNIA
 TRANSPORTATION AGENCY
 DEPARTMENT OF PUBLIC WORKS
 DIVISION OF HIGHWAYS
PROPOSED RELINQUISHMENT

0 100 200 300 400

AREA TO BE RELINQUISHED SHOWN THUS [Hatched Box]

ACCESS PROHIBITED [Dashed Line]

RELINQUISH ACCESS RIGHTS [Dotted Line]

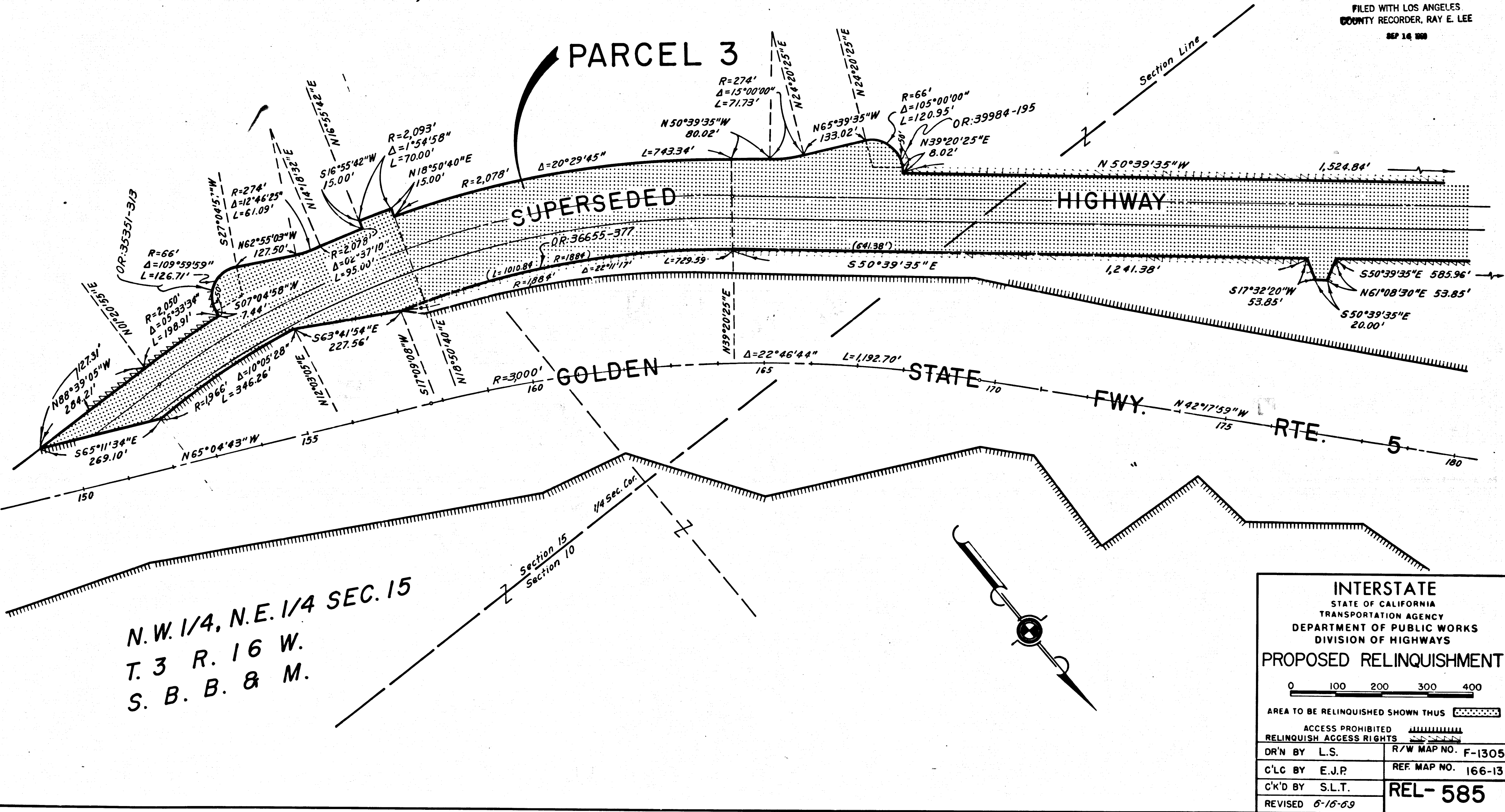
DR'N BY L.S.	R/W MAP NO. F-1305
C'LC BY E.J.P.	REF MAP NO. 166-13
C'K'D BY S.L.T.	REL-585
REVISED 6-16-69	

N.E. 1/4 SEC. 15
 T.3 N. R.16 W.
 S.B.B. & M.

DIST	COUNTY	ROUTE	POST MILES	SHEET NO.	TOTAL SHEETS
07	L.A.	5	46.0/49.7	5	7

COUNTY OF LOS ANGELES

R.W. Felt
 SENIOR HIGHWAY ENGINEER
 Aug. 22, 1969
 DATE
 FILED WITH LOS ANGELES
 COUNTY RECORDER, RAY E. LEE
 SEP 16 1969



INTERSTATE
 STATE OF CALIFORNIA
 TRANSPORTATION AGENCY
 DEPARTMENT OF PUBLIC WORKS
 DIVISION OF HIGHWAYS

PROPOSED RELINQUISHMENT

0 100 200 300 400

AREA TO BE RELINQUISHED SHOWN THUS [Symbol]

ACCESS PROHIBITED [Symbol]

RELINQUISH ACCESS RIGHTS [Symbol]

DR'N BY L.S.	R/W MAP NO. F-1305
C'LC BY E.J.P.	REF. MAP NO. 166-13
C'K'D BY S.L.T.	REL-585
REVISED 6-16-69	

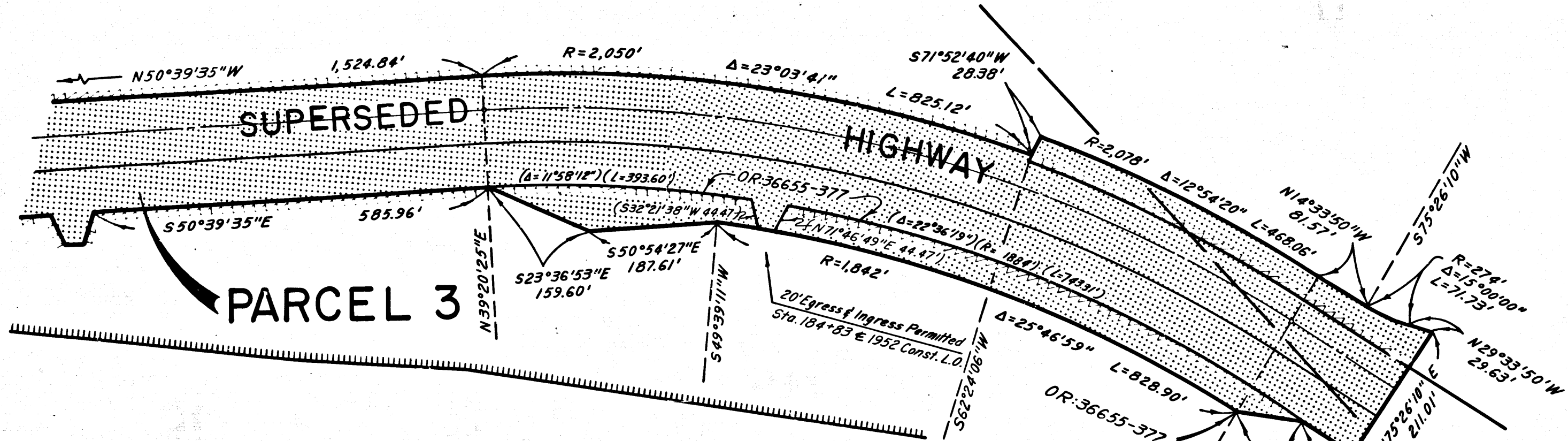
COUNTY ENGINEER'S COPY

DIST	COUNTY	ROUTE	POST MILES	SHEET NO.	TOTAL SHEETS
07	L.A.	5	46.0/49.7	6	7

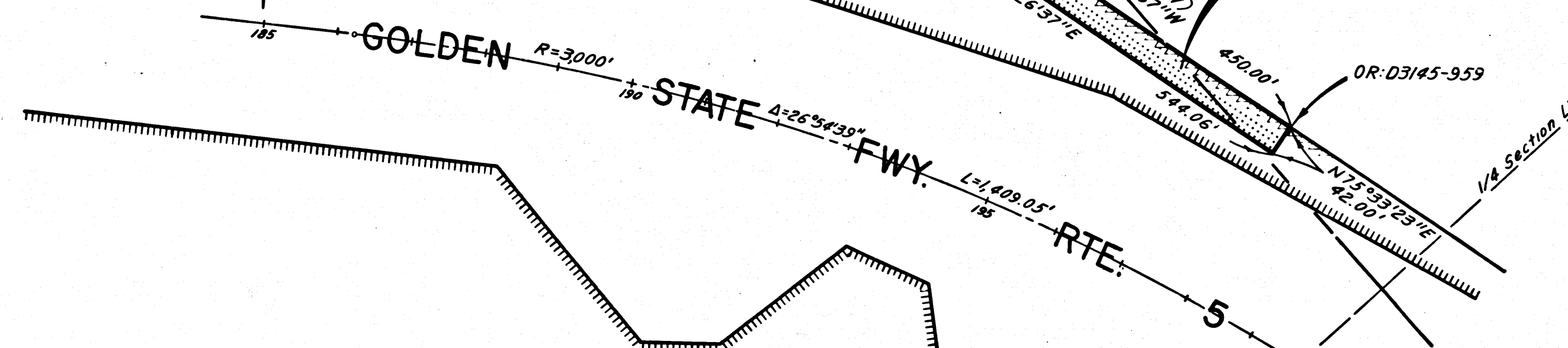
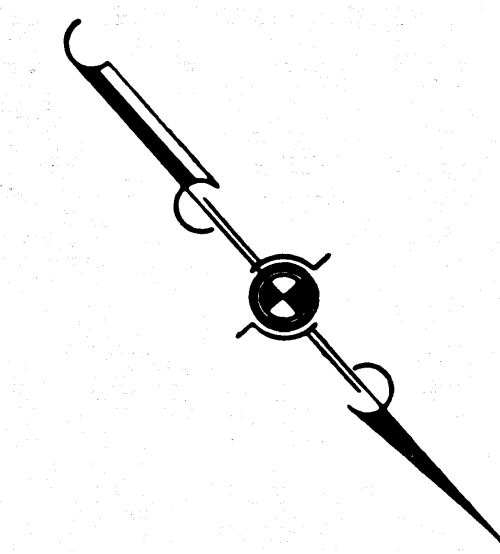
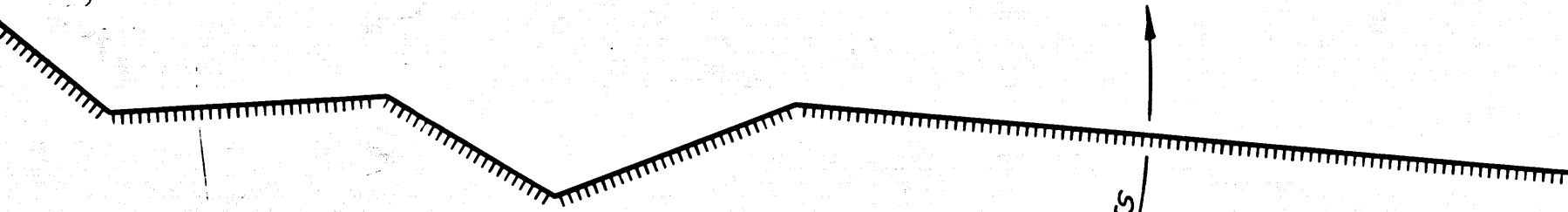
COUNTY OF LOS ANGELES

R.W.F.H.
 SENIOR HIGHWAY ENGINEER
 Aug. 22, 1969
 DATE

FILED WITH LOS ANGELES
 COUNTY RECORDER, RAY E. LEE
 SEP 16 1969



175 GOLDEN STATE FWY. RTE. 5
 N42°17'59\"/>



INTERSTATE
 STATE OF CALIFORNIA
 TRANSPORTATION AGENCY
 DEPARTMENT OF PUBLIC WORKS
 DIVISION OF HIGHWAYS

PROPOSED RELINQUISHMENT

0 100 200 300 400

AREA TO BE RELINQUISHED SHOWN THUS

ACCESS PROHIBITED

RELINQUISH ACCESS RIGHTS

DR'N BY L.S.	R/W MAP NO. F-1306
C'LC BY E.J.P.	REF MAP NO. 166-13
C'K'D BY S.L.T.	REL-585
REVISED	

COUNTY ENGINEER'S COPY

DIST	COUNTY	ROUTE	POST MILES	SHEET NO.	TOTAL SHEETS
07	LA	5	46.0/49.7	7	7

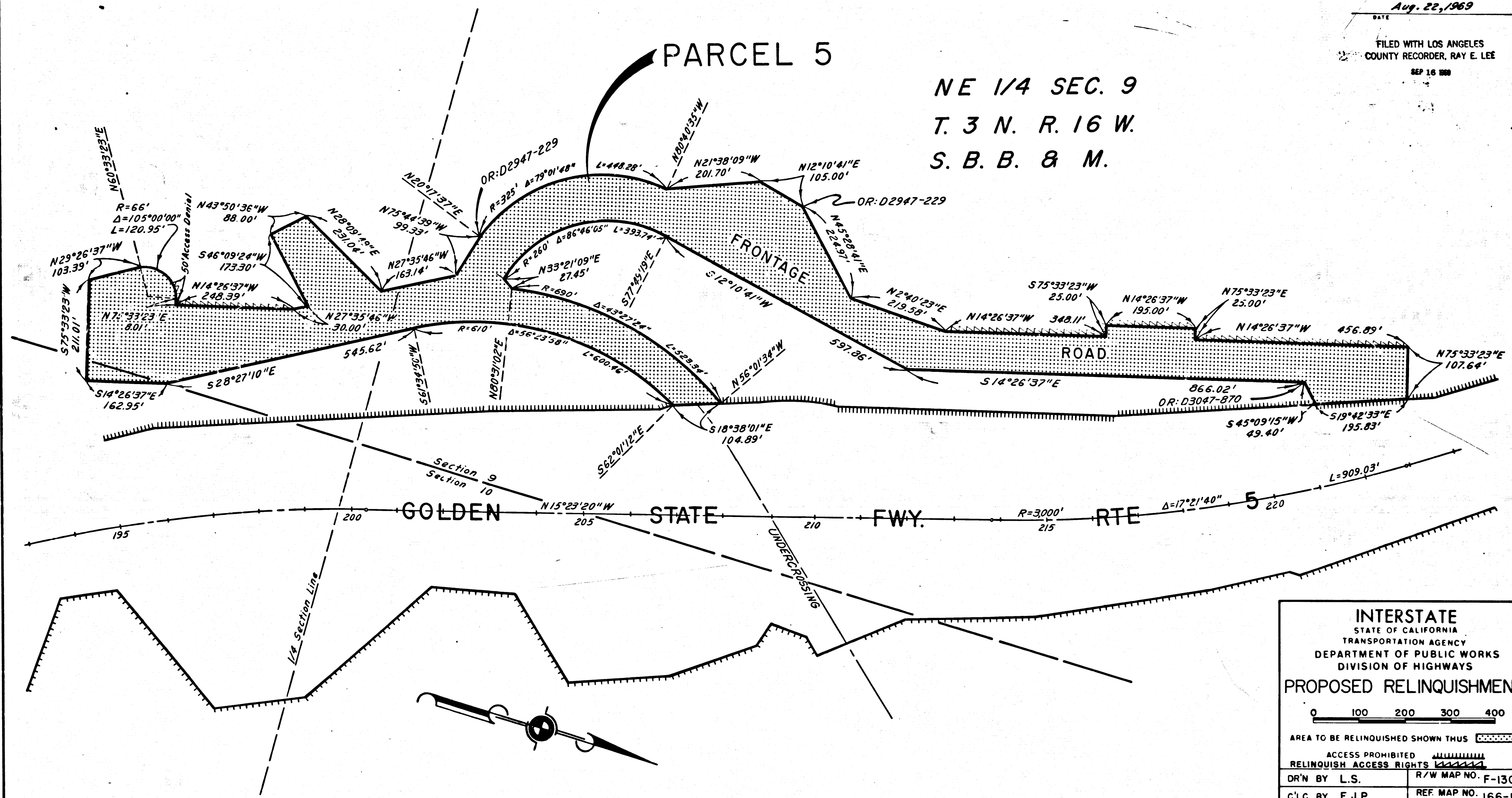
C O U N T Y O F L O S A N G E L E S

R.W.F.M.
 SENIOR HIGHWAY ENGINEER
 Aug. 22, 1969
 DATE

FILED WITH LOS ANGELES
 COUNTY RECORDER, RAY E. LEE
 SEP 16 1969

PARCEL 5

NE 1/4 SEC. 9
 T. 3 N. R. 16 W.
 S. B. B. & M.



INTERSTATE
 STATE OF CALIFORNIA
 TRANSPORTATION AGENCY
 DEPARTMENT OF PUBLIC WORKS
 DIVISION OF HIGHWAYS

PROPOSED RELINQUISHMENT

0 100 200 300 400

AREA TO BE RELINQUISHED SHOWN THUS [Stippled Box]

ACCESS PROHIBITED [Hatched Box]

RELINQUISH ACCESS RIGHTS [Dashed Box]

DR'N BY L.S.	R/W MAP NO. F-1306
C'LC BY E.J.P.	REF MAP NO. 166-13
C'K'D BY S.L.T.	REL-585
REVISED	