

DIST	COUNTY	ROUTE	POST MILES	SHEET NO.	TOTAL SHEETS
07	C.A.	10	43.7/44.2	1	4

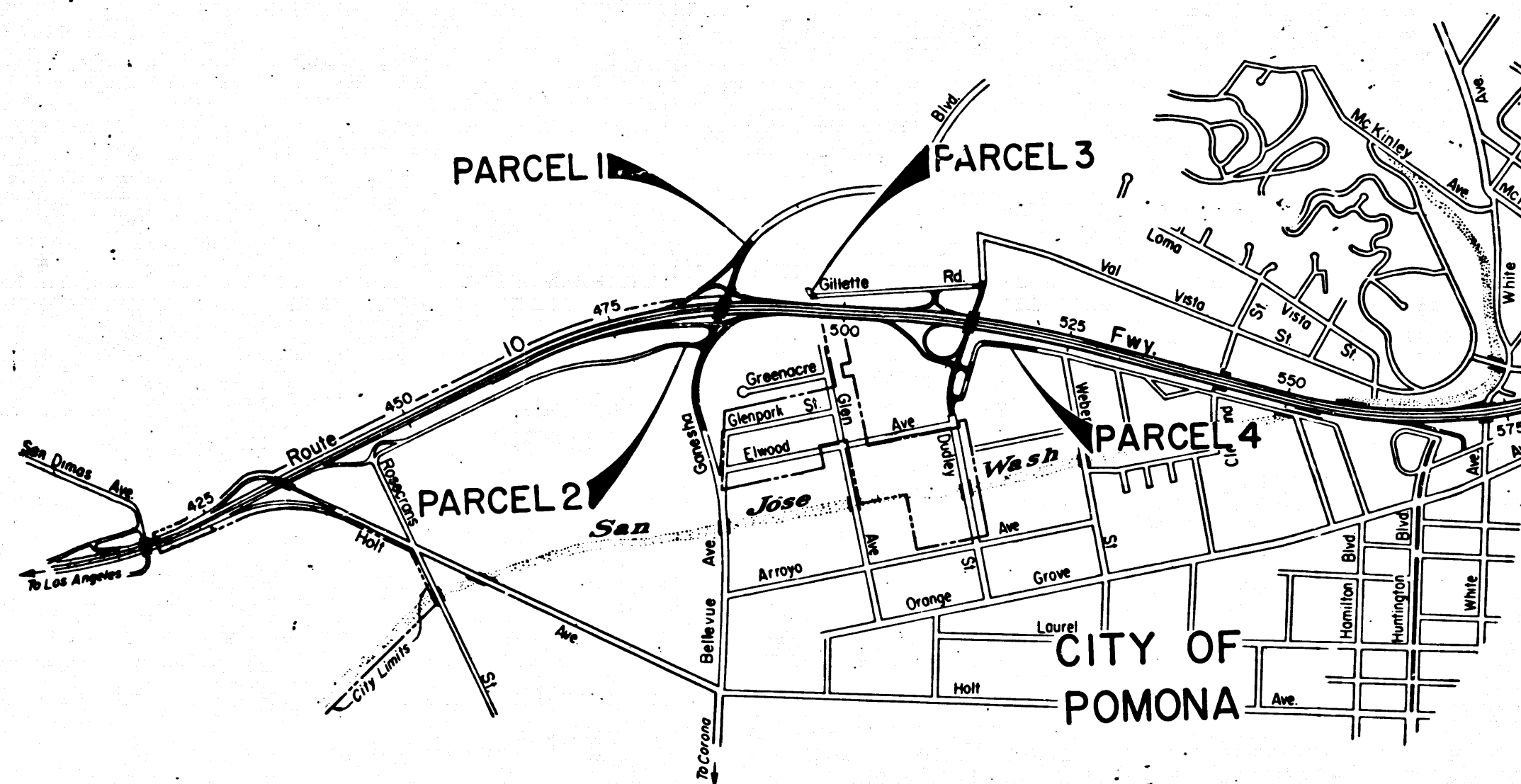
STATE OF CALIFORNIA  
 TRANSPORTATION AGENCY  
 DEPARTMENT OF PUBLIC WORKS  
 DIVISION OF HIGHWAYS

*W. H. Hamelbach*  
 DEPUTY DISTRICT ENGINEER  
 DATE Aug. 22, 1969

RIGHT OF WAY MAPS OF  
**STATE HIGHWAY**  
 In the County of Los Angeles on Route 10 between  
 0.1 mi. W of Ganessa Blvd. and 0.1 mi. E. of  
 Dudley St. Overcrossing

2574

FILED  
 AT REQUEST OF  
 DEPT. OF PUBLIC WORKS  
 SEPT. 16, 1969  
 5 P.M.  
 IN BOOK 8  
 AT PAGE 34  
 OF COUNTY RECORD MAPS  
 LOS ANGELES COUNTY, CALIF.  
 RAY E. LEE  
 COUNTY RECORDER  
 Deputy *Free*



STATE OF CALIFORNIA  
 TRANSPORTATION AGENCY  
 DEPARTMENT OF PUBLIC WORKS  
 DIVISION OF HIGHWAYS  
**PROPOSED RELINQUISHMENT**

SCALE IN FEET  
 0 1000 2000 3000 4000

DR'N BY <i>M...C.</i>	R/W MAP NO. <i>F/1968, F/1969</i>
C'LC BY <i>G.H.</i>	REF MAP NO. <i>179-10</i>
C'K'D BY <i>G.D.W.</i>	<b>REL-725</b>
REVISED	

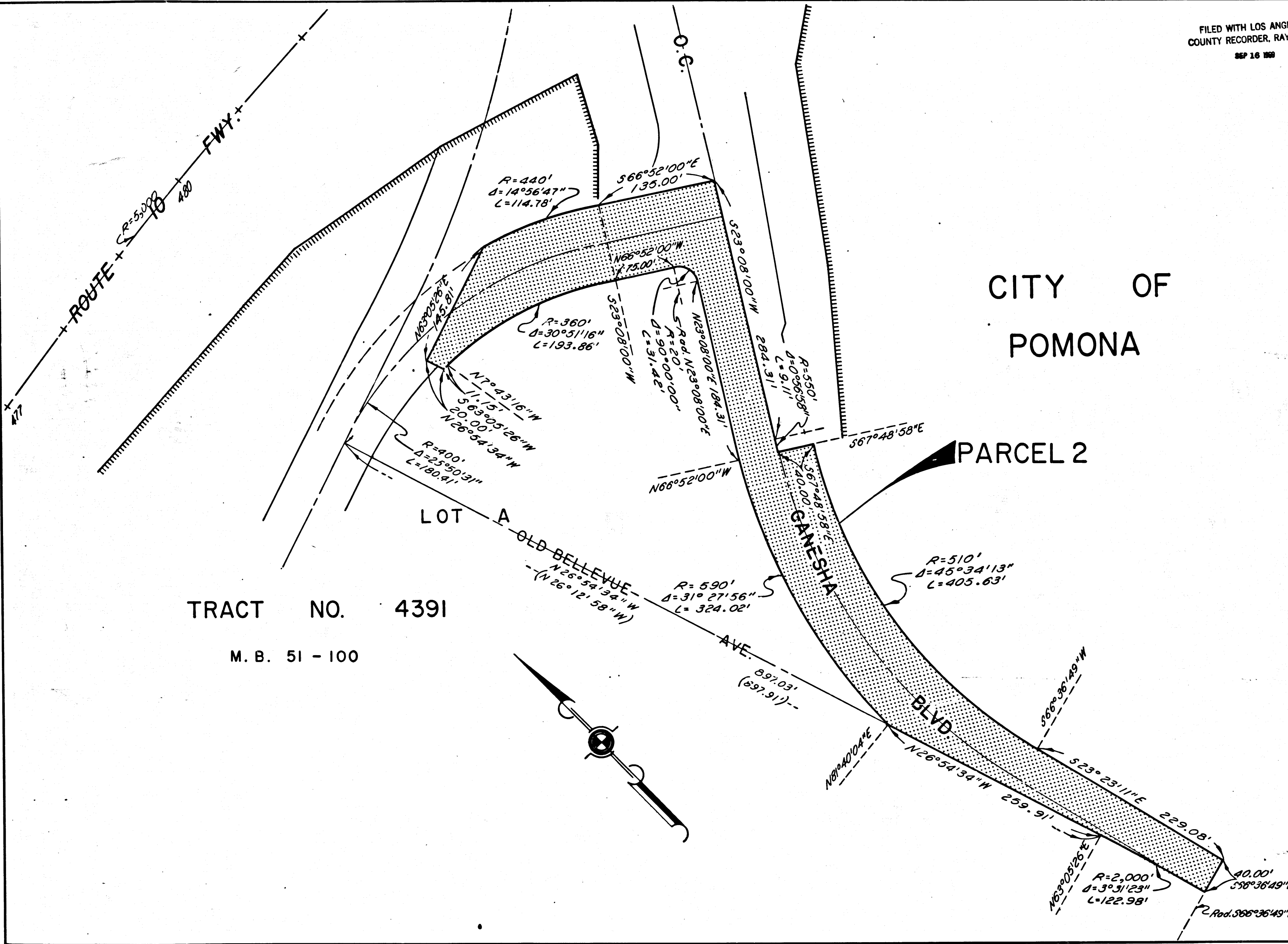
COUNTY ENGINEER'S COPY

8/24

DIST.	COUNTY	ROUTE	POST MILES	SHEET NO.	TOTAL SHEETS
07	L.A.	10	43.7/44.2	2	4

FILED WITH LOS ANGELES COUNTY RECORDER, RAY E. LEE  
SEP 16 1969

*R.W. Felt*  
SENIOR HIGHWAY ENGINEER  
Aug. 22, 1969  
DATE



CITY OF POMONA

PARCEL 2

TRACT NO. 4391  
M. B. 51 - 100

STATE OF CALIFORNIA  
TRANSPORTATION AGENCY  
DEPARTMENT OF PUBLIC WORKS  
DIVISION OF HIGHWAYS

**PROPOSED RELINQUISHMENT**

0 50 100 150 200

AREA TO BE RELINQUISHED SHOWN THUS

ACCESS PROHIBITED

DR'N BY	M. A. C.	R/W MAP NO.	F1068, F1069
C/LC BY	G. H.	REF. MAP NO.	179-10
C/K'D BY	G. D. W.	<b>REL-725</b>	
REVISED			

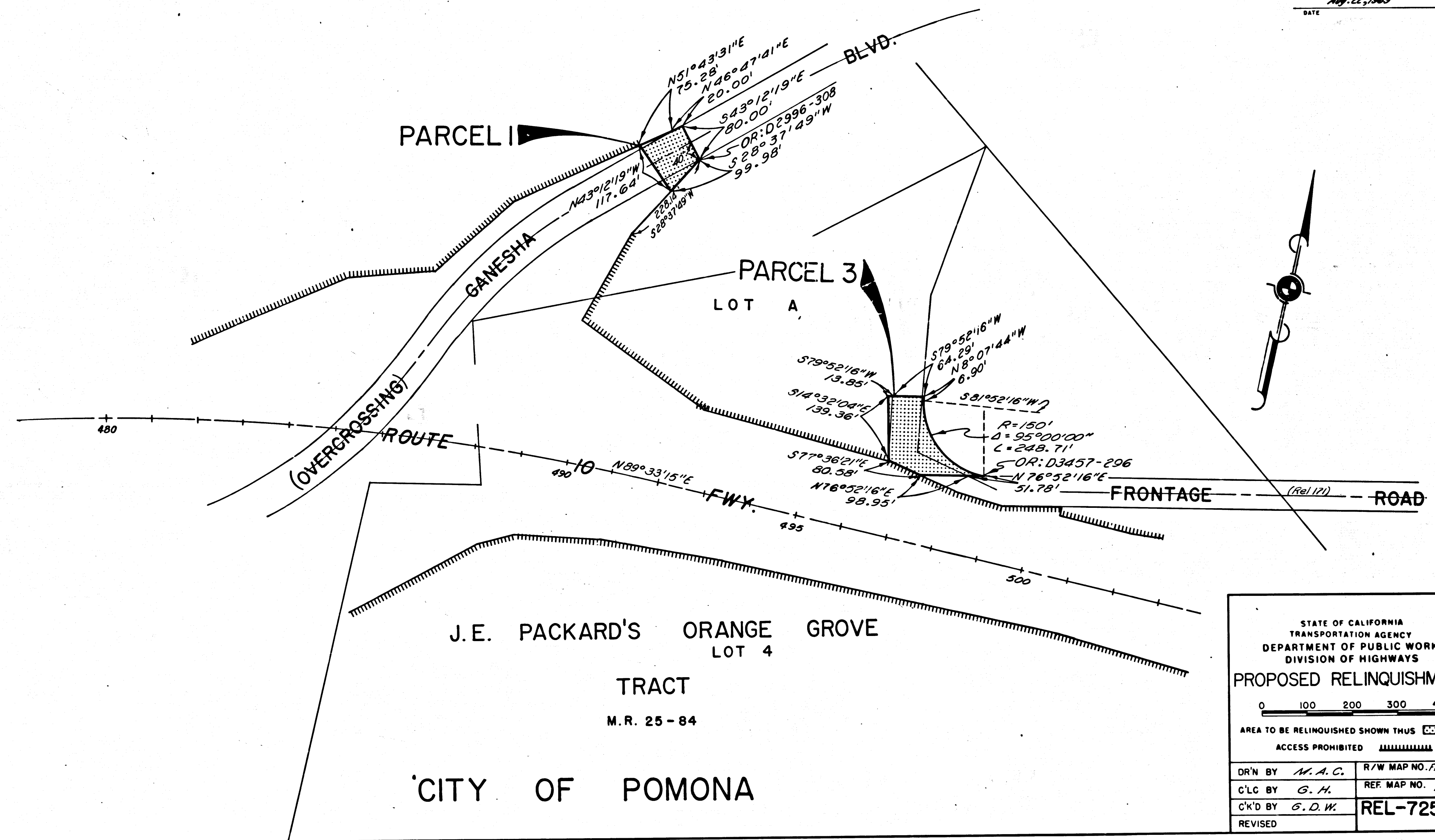
COUNTY ENGINEER'S COPY

FILED WITH LOS ANGELES  
COUNTY RECORDER, RAY E. LEE  
SEP 16 1969

DIST	COUNTY	ROUTE	POST MILES	SHEET NO.	TOTAL SHEETS
07	L.A.	10	43.7/44.2	3	4

*R.W.F.M.*  
SENIOR HIGHWAY ENGINEER  
May 22, 1969  
DATE

RANCHO SAN JOSE  
Pat. 2/292-293



STATE OF CALIFORNIA  
TRANSPORTATION AGENCY  
DEPARTMENT OF PUBLIC WORKS  
DIVISION OF HIGHWAYS

PROPOSED RELINQUISHMENT

0 100 200 300 400

AREA TO BE RELINQUISHED SHOWN THUS

ACCESS PROHIBITED

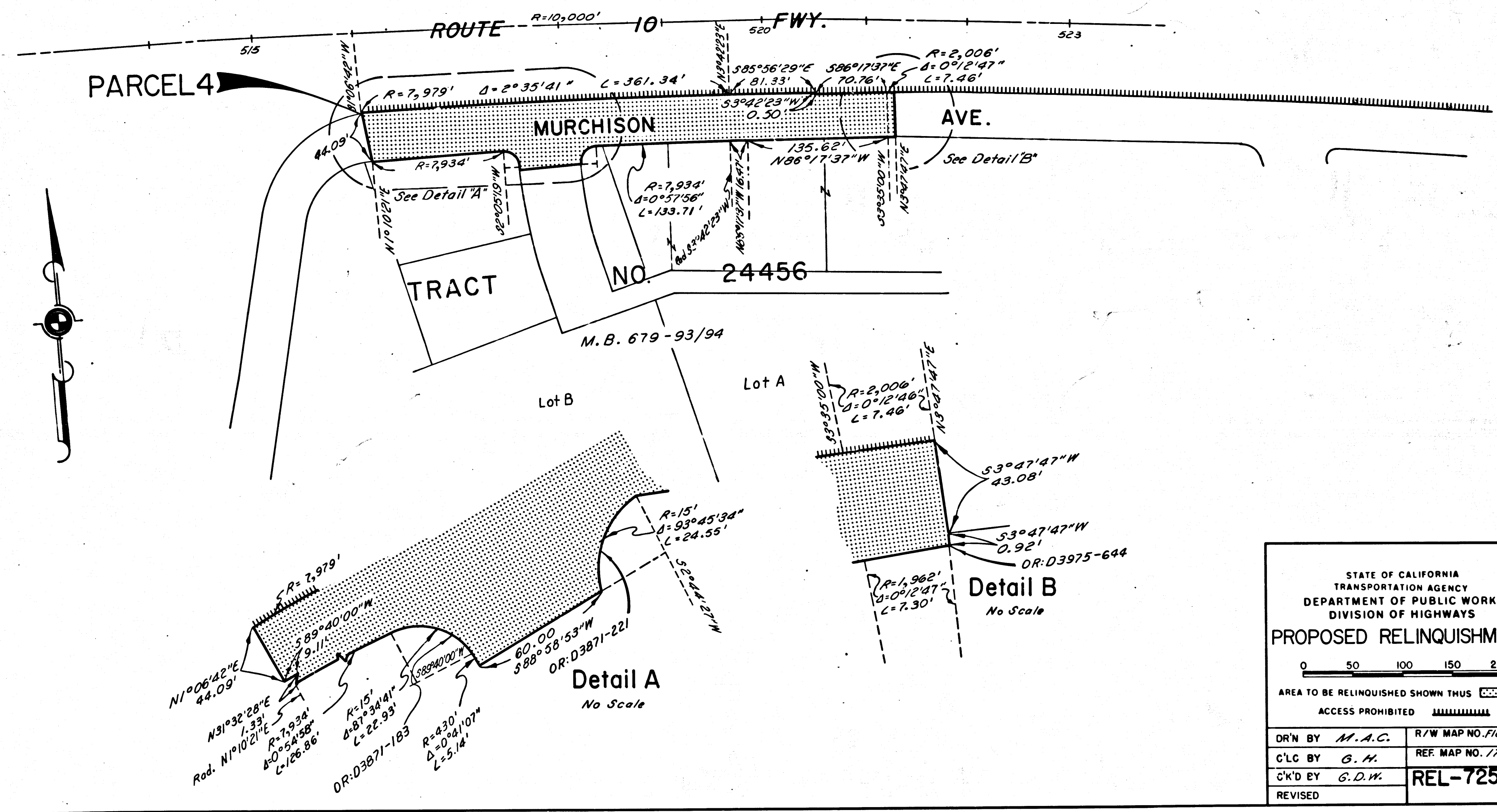
DR'N BY	M. A. C.	R/W MAP NO.	F1808, 1969
C'LC BY	G. H.	REF. MAP NO.	178-10
C'K'D BY	G. D. W.	REL-	725
REVISED			

FILED WITH LOS ANGELES  
COUNTY RECORDER, RAY E. LEE  
SEP 16 1969

DIST	COUNTY	ROUTE	POST MILES	SHEET NO.	TOTAL SHEETS
07	L.A.	10	43.744	4	4

# CITY OF POMONA

*R.W. Fisher*  
SENIOR HIGHWAY ENGINEER  
Aug. 22, 1969  
DATE



STATE OF CALIFORNIA  
TRANSPORTATION AGENCY  
DEPARTMENT OF PUBLIC WORKS  
DIVISION OF HIGHWAYS

### PROPOSED RELINQUISHMENT

0 50 100 150 200

AREA TO BE RELINQUISHED SHOWN THUS

ACCESS PROHIBITED

DR'N BY	M.A.C.	R/W MAP NO. F1868, F1869
C'LC BY	G.H.	REF. MAP NO. 179-10
C'K'D BY	G.D.W.	REL-725
REVISED		

COUNTY ENGINEER'S COPY