

DIST	COUNTY	ROUTE	POST MILES	SHEET NO.	TOTAL SHEETS
07	L.A.	134	10.8	1	2

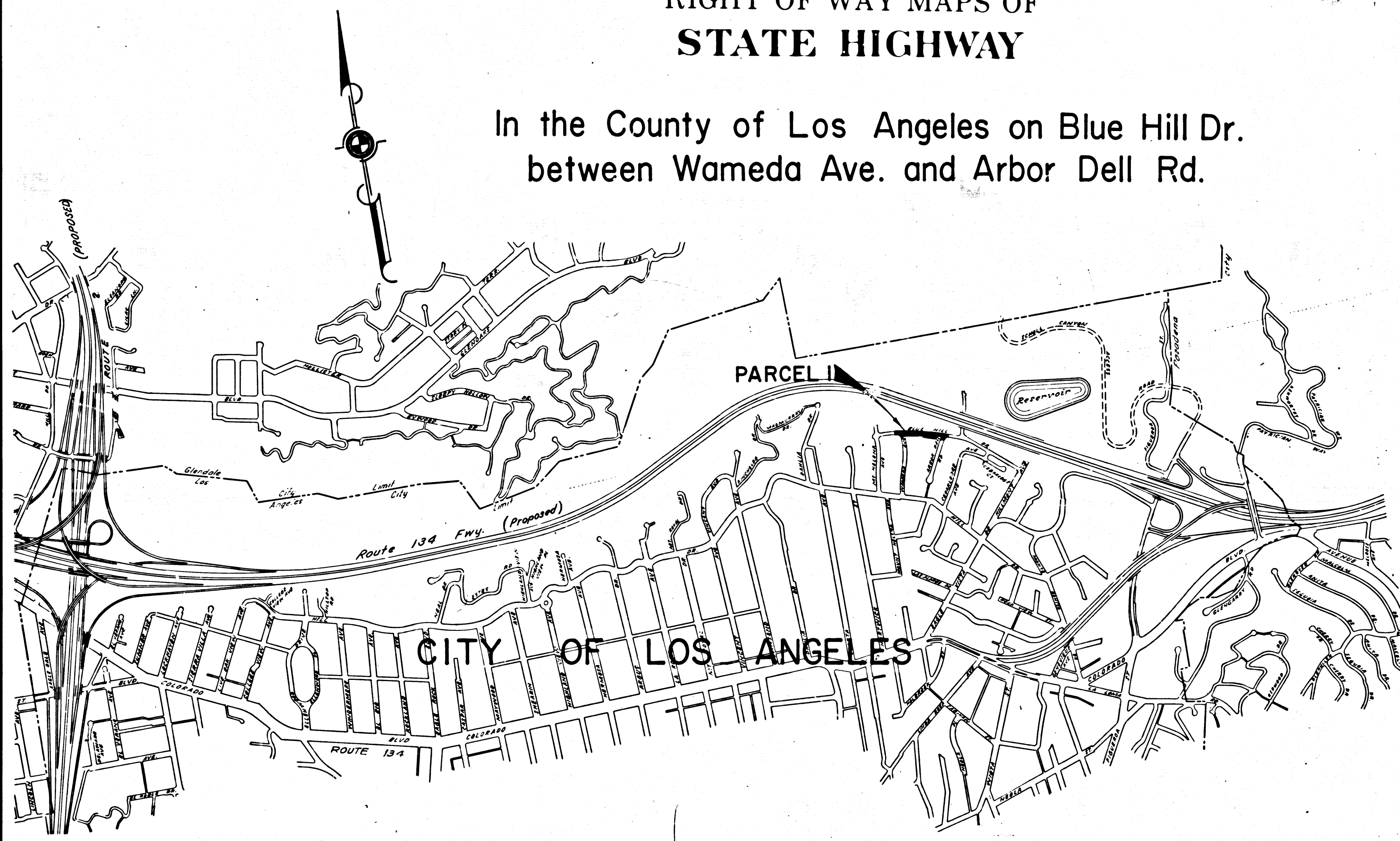
STATE OF CALIFORNIA  
 TRANSPORTATION AGENCY  
 DEPARTMENT OF PUBLIC WORKS  
 DIVISION OF HIGHWAYS

*A.L. Hummel*  
 DEPUTY DISTRICT ENGINEER  
 - September 19, 1969  
 DATE

RIGHT OF WAY MAPS OF  
**STATE HIGHWAY**

In the County of Los Angeles on Blue Hill Dr.  
 between Wameda Ave. and Arbor Dell Rd.

2697  
 2697  
 FILED  
 AT REQUEST OF  
 DEPT. OF PUBLIC WORKS  
 SEPT 29, 1965  
 15  
 IN BOOK 8  
 AT PAGE 38  
 OF STATE HIGHWAY MAPS  
 LOS ANGELES COUNTY, CALIF.  
 DAY E. LEE  
 COUNTY RECORDER  
*John Dawson*  
 Deputy  
 FREE



STATE OF CALIFORNIA  
 TRANSPORTATION AGENCY  
 DEPARTMENT OF PUBLIC WORKS  
 DIVISION OF HIGHWAYS  
**PROPOSED RELINQUISHMENT**

SCALE  
 0 600 1200 1800 2400

DR'N BY	M.A.C.	R/W MAP NO.	F-1165.2
C'LC BY	G.D.W.	REF. MAP NO.	181-11
C'K'D BY	S.L.T.	REL-	657
REVISED	8-1-69		

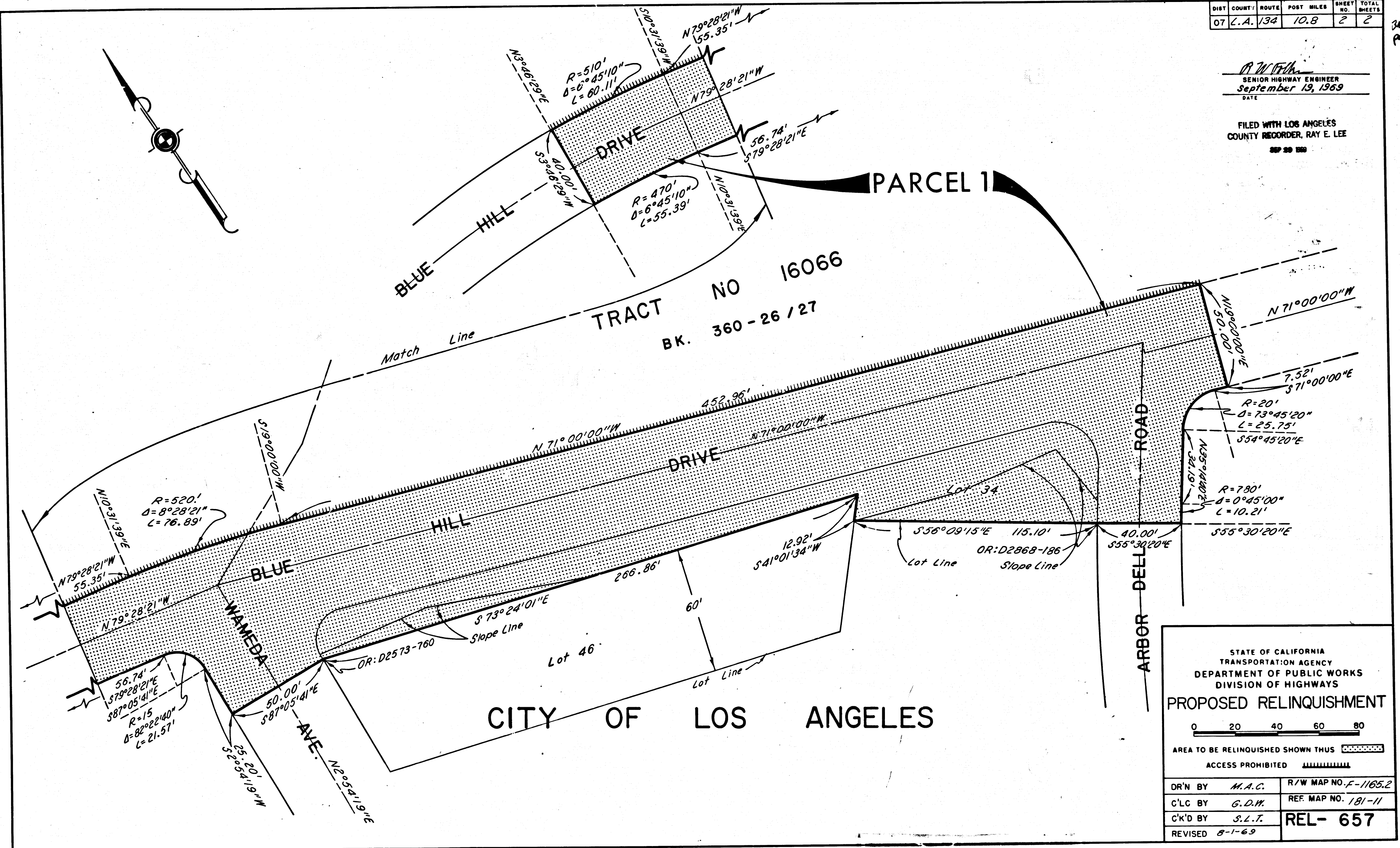
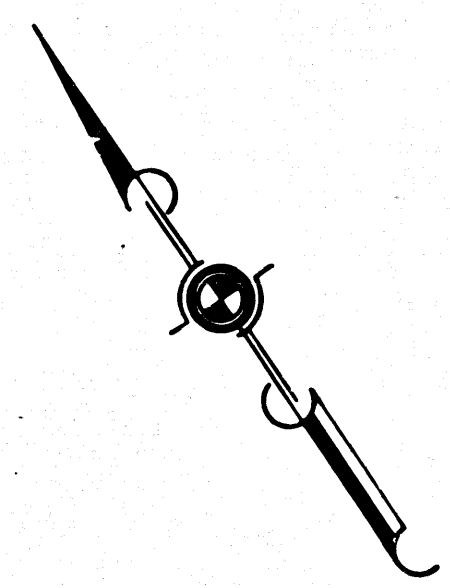
COUNTY ENGINEER'S COPY

DIST	COUNTY	ROUTE	POST MILES	SHEET NO.	TOTAL SHEETS
07	L.A.	134	10.8	2	2

38  
39

*R. W. Felt*  
SENIOR HIGHWAY ENGINEER  
September 13, 1969  
DATE

FILED WITH LOS ANGELES  
COUNTY RECORDER, RAY E. LEE  
SEP 29 1969



STATE OF CALIFORNIA  
TRANSPORTATION AGENCY  
DEPARTMENT OF PUBLIC WORKS  
DIVISION OF HIGHWAYS

**PROPOSED RELINQUISHMENT**

0 20 40 60 80

AREA TO BE RELINQUISHED SHOWN THUS

ACCESS PROHIBITED

DR'N BY	M.A.C.	R/W MAP NO.	F-1165.2
C/LC BY	G.D.M.	REF MAP NO.	181-11
C/K'D BY	S.L.T.	<b>REL- 657</b>	
REVISED	8-1-69		

COUNTY ENGINEER'S COPY