

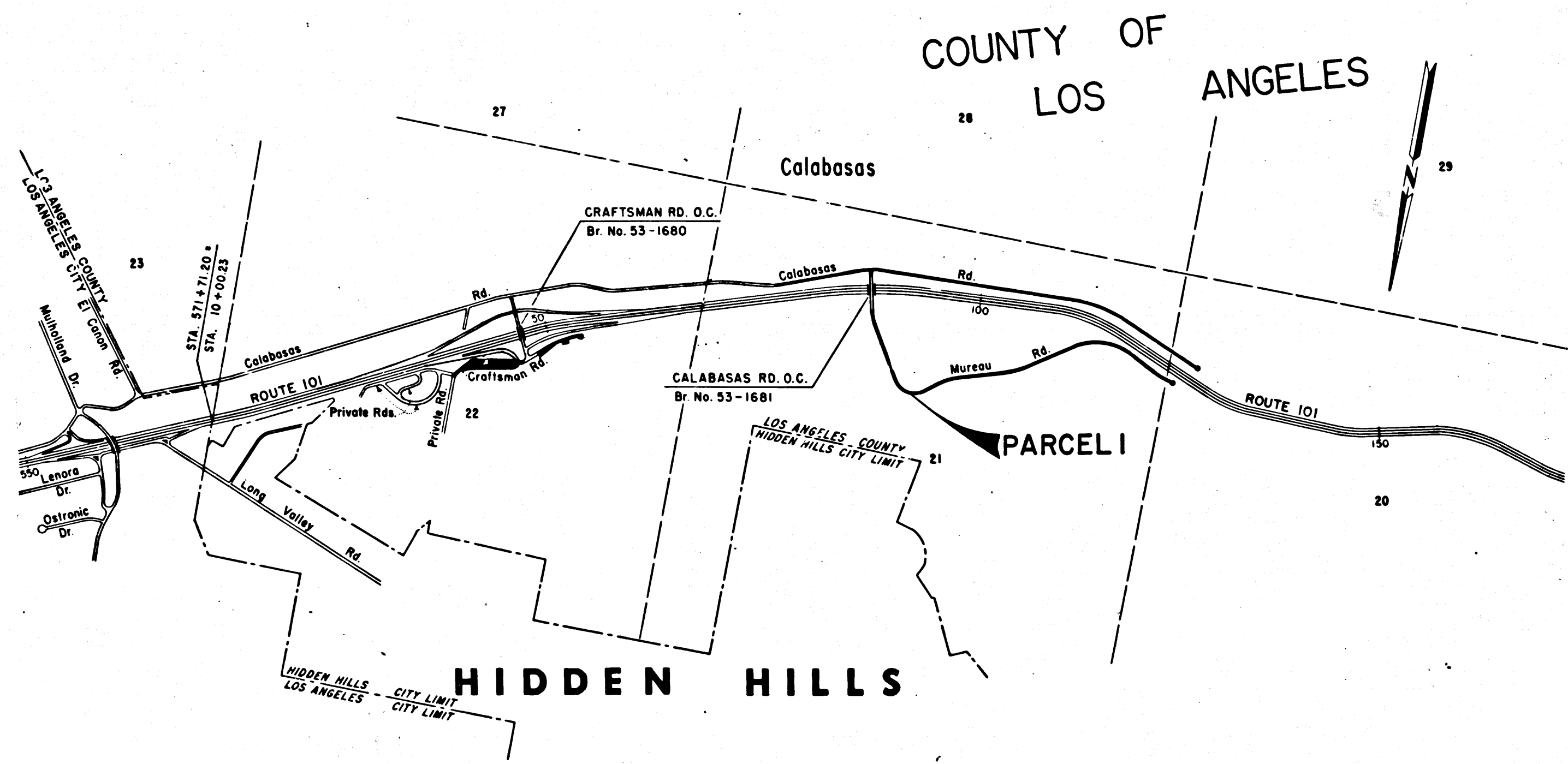
DIST	COUNTY	ROUTE	POST MILES	SHEET NO.	TOTAL SHEETS
07	L.A.	101	28.1/28.6	1	3

A. L. Hill
 DEPUTY DISTRICT ENGINEER
 September 13, 1969
 DATE

STATE OF CALIFORNIA
 TRANSPORTATION AGENCY
 DEPARTMENT OF PUBLIC WORKS
 DIVISION OF HIGHWAYS
 RIGHT OF WAY MAPS OF
STATE HIGHWAY

In the County of Los Angeles
 on Mureau Road along Rte. 101 Fwy.

2698
 FILED
 AT REQUEST OF
 DEPT. OF PUBLIC WORKS
 SEPT 29 1969
 15 MIN PAST 1 PM
 IN BOOK 8
 AT PAGE 40
 OF STATE HIGHWAY MAPS
 LOS ANGELES COUNTY, CALIF.
 RAY E. LEE
 COUNTY RECORDER
 BY *J. H. ...*
 DATED 9/29/69



STATE OF CALIFORNIA
 TRANSPORTATION AGENCY
 DEPARTMENT OF PUBLIC WORKS
 DIVISION OF HIGHWAYS
PROPOSED RELINQUISHMENT

SCALE IN FEET
 0 1000 2000 3000

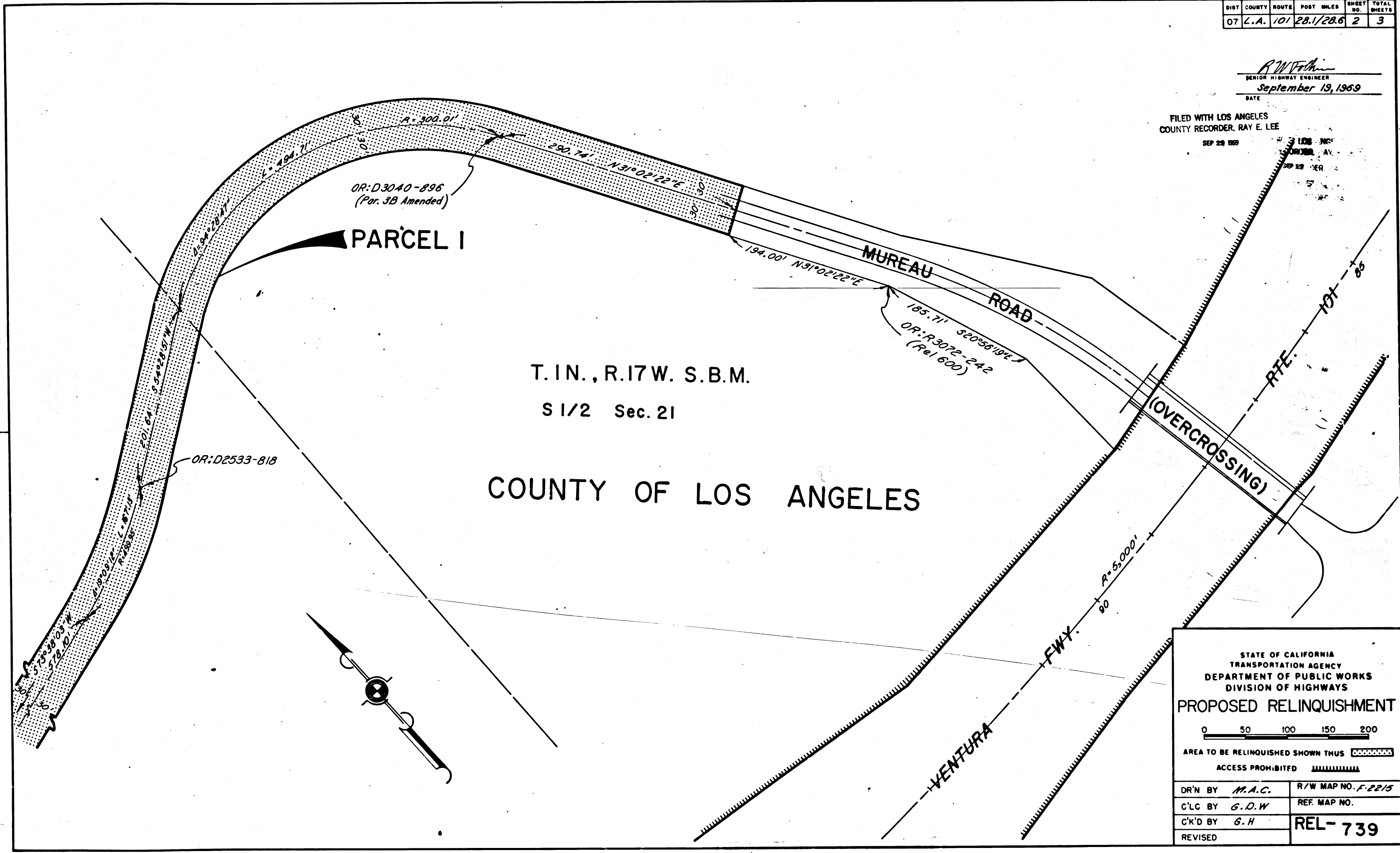
DR'N BY <i>M.A.C.</i>	R/W MAP NO. F2215
C'LC BY <i>G.D.W.</i>	REF. MAP NO.
C'K'D BY <i>G.H.</i>	REL-739
REVISED	

COUNTY ENGINEER'S COPY

DIST	COUNTY	ROUTE	POST MILES	SHEET NO.	TOTAL SHEETS
07	L.A.	101	28.1/28.6	2	3

R.W. Felton
 SENIOR HIGHWAY ENGINEER
 September 19, 1969
 DATE

FILED WITH LOS ANGELES
 COUNTY RECORDER, RAY E. LEE
 SEP 29 1969



STATE OF CALIFORNIA
 TRANSPORTATION AGENCY
 DEPARTMENT OF PUBLIC WORKS
 DIVISION OF HIGHWAYS

PROPOSED RELINQUISHMENT

0 50 100 150 200

AREA TO BE RELINQUISHED SHOWN THUS

ACCESS PROHIBITED

DR'N BY <i>M.A.C.</i>	R/W MAP NO. <i>F-2215</i>
C'LC BY <i>G.D.W.</i>	REF. MAP NO.
C'K'D BY <i>G.H.</i>	REL-739
REVISED	

COUNTY ENGINEER'S COPY

