

DIST	COUNTY	ROUTE	POST MILES	SHEET NO.	TOTAL SHEETS
07	L.A.	10	8.8	1	3

STATE OF CALIFORNIA
 TRANSPORTATION AGENCY
 DEPARTMENT OF PUBLIC WORKS
 DIVISION OF HIGHWAYS

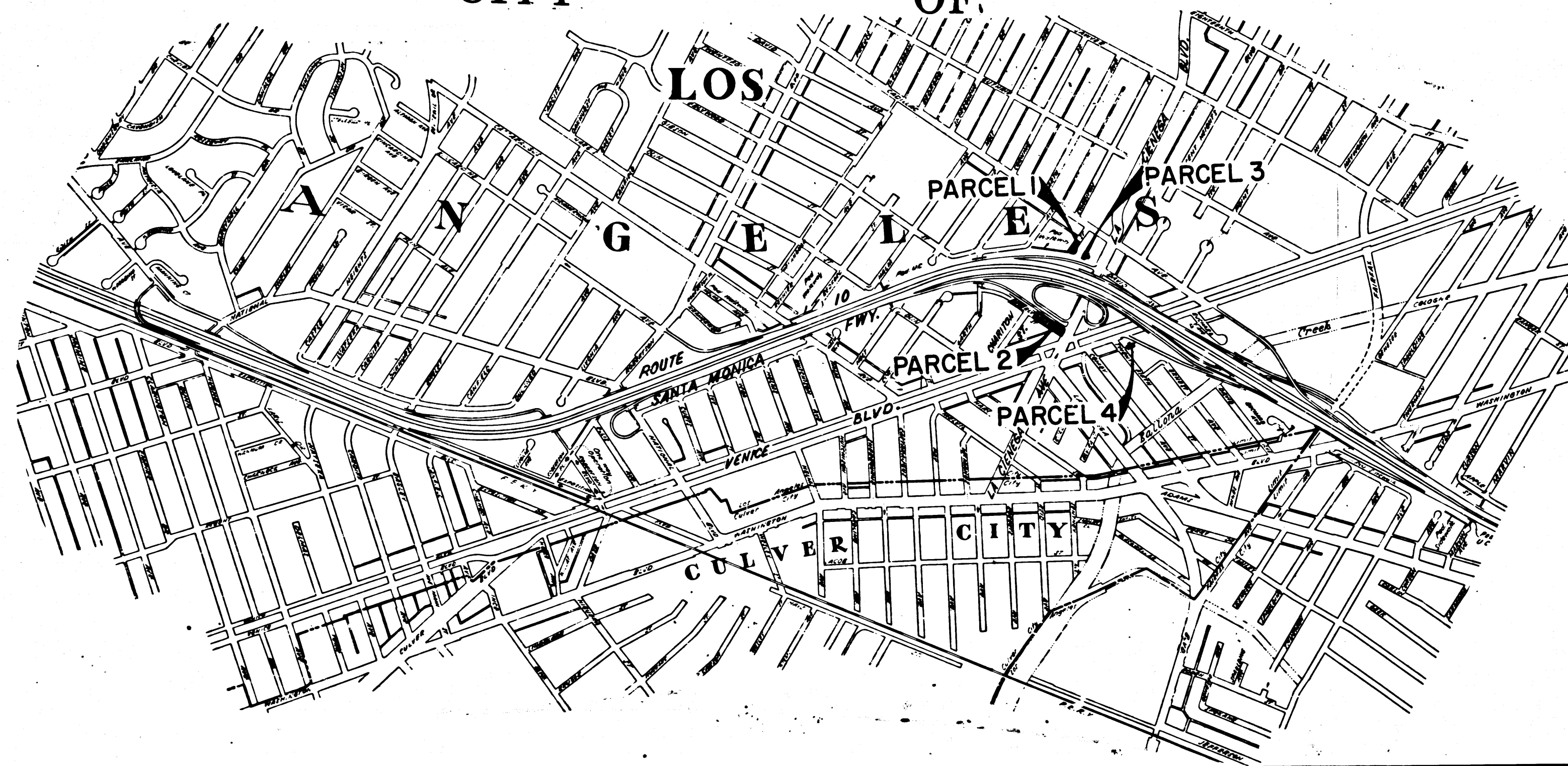
A. Hinkel
 DEPUTY DISTRICT ENGINEER
 Oct. 7, 1969
 DATE

RIGHT OF WAY MAPS OF
STATE HIGHWAY

In the County of Los Angeles on Route 10
 near La Cienega Blvd.

3793
 FILED
 AT REQUEST OF
 DEPT. OF PUBLIC WORKS
 OCT. 14, 1969
 2:33 P.M.
 IN BOOK 8
 AT PAGE 43
 OF STATE HIGHWAY MAPS
 LOS ANGELES COUNTY, CALIF.
 RAY E. LEE
 COUNTY RECORDER
 Deputy
Free

CITY OF



INTERSTATE
 STATE OF CALIFORNIA
 TRANSPORTATION AGENCY
 DEPARTMENT OF PUBLIC WORKS
 DIVISION OF HIGHWAYS
PROPOSED RELINQUISHMENT



DR'N BY	M.A.C.	R/W MAP NO.	F2072
C'LC BY	G.D.W.	REF. MAP NO.	148-4
C'K'D BY	G.H.	REL-	737
REVISED	9-10-69		

COUNTY ENGINEER'S COPY

12-23

8/43

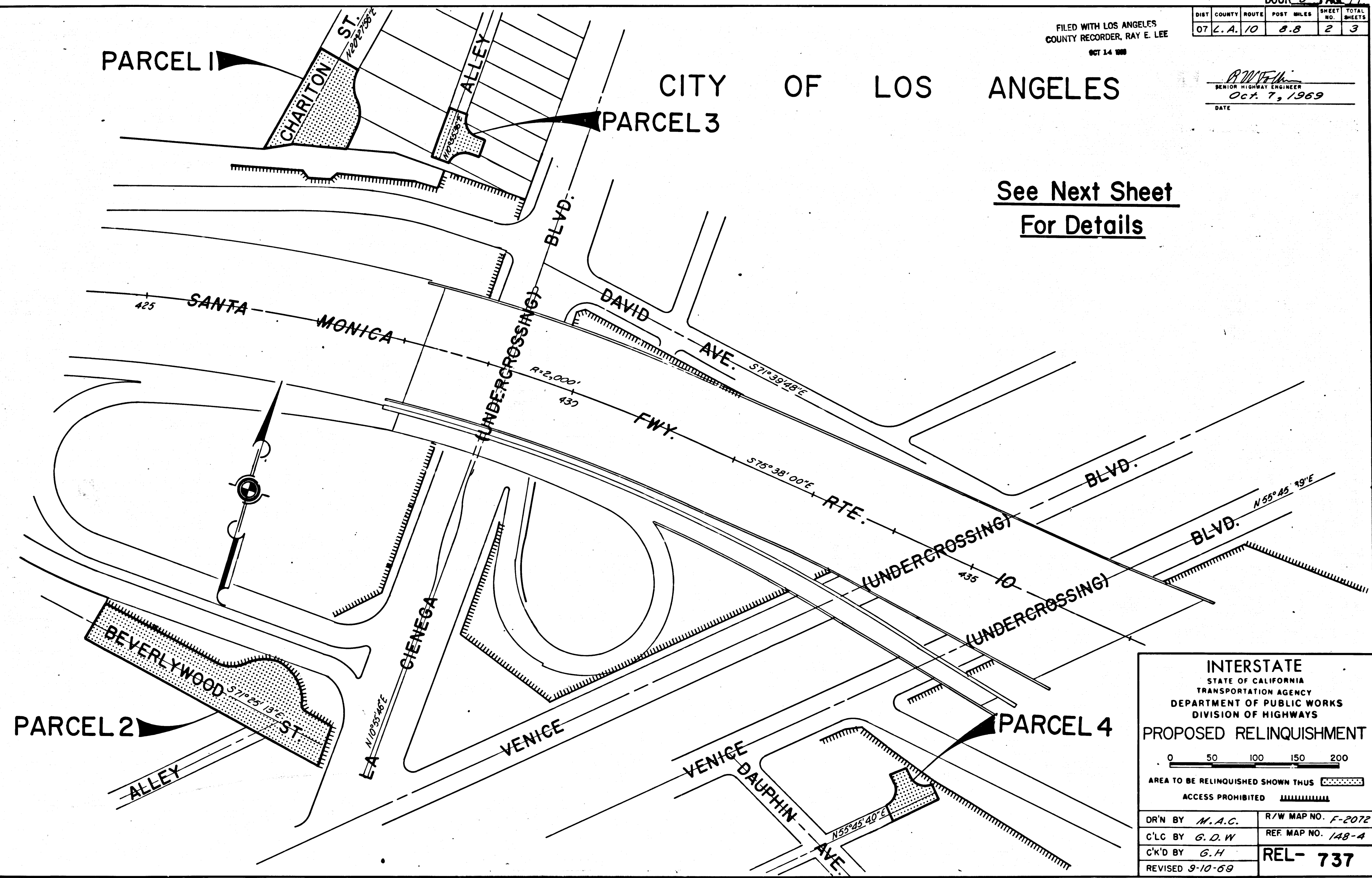
FILED WITH LOS ANGELES
COUNTY RECORDER, RAY E. LEE
OCT 14 1969

DIST	COUNTY	ROUTE	POST MILES	SHEET NO.	TOTAL SHEETS
07	L. A.	10	8.8	2	3

R.W.F.H.
SENIOR HIGHWAY ENGINEER
Oct. 7, 1969
DATE

CITY OF LOS ANGELES

See Next Sheet
For Details



INTERSTATE
STATE OF CALIFORNIA
TRANSPORTATION AGENCY
DEPARTMENT OF PUBLIC WORKS
DIVISION OF HIGHWAYS

PROPOSED RELINQUISHMENT

0 50 100 150 200

AREA TO BE RELINQUISHED SHOWN THUS [stippled box]

ACCESS PROHIBITED [hatched box]

DR'N BY M. A. C.	R/W MAP NO. F-2072
C'LG BY G. D. W.	REF. MAP NO. 148-A
C'K'D BY G. H.	REL- 737
REVISED 9-10-69	

COUNTY ENGINEER'S COPY

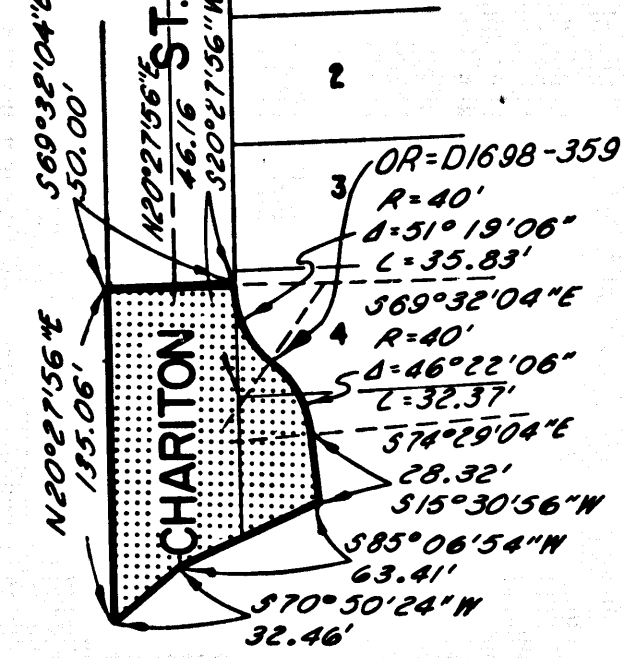
DIST	COUNTY	ROUTE	POST MILES	SHEET NO.	TOTAL SHEETS
07	L.A.	10	8.8	3	3

FILED WITH LOS ANGELES COUNTY RECORDER, RAY E. LEE
OCT 14 1969

R.M. Felt
SENIOR HIGHWAY ENGINEER
Oct. 7, 1969
DATE

TRACT NO. 6447

M.B. 75-80/83

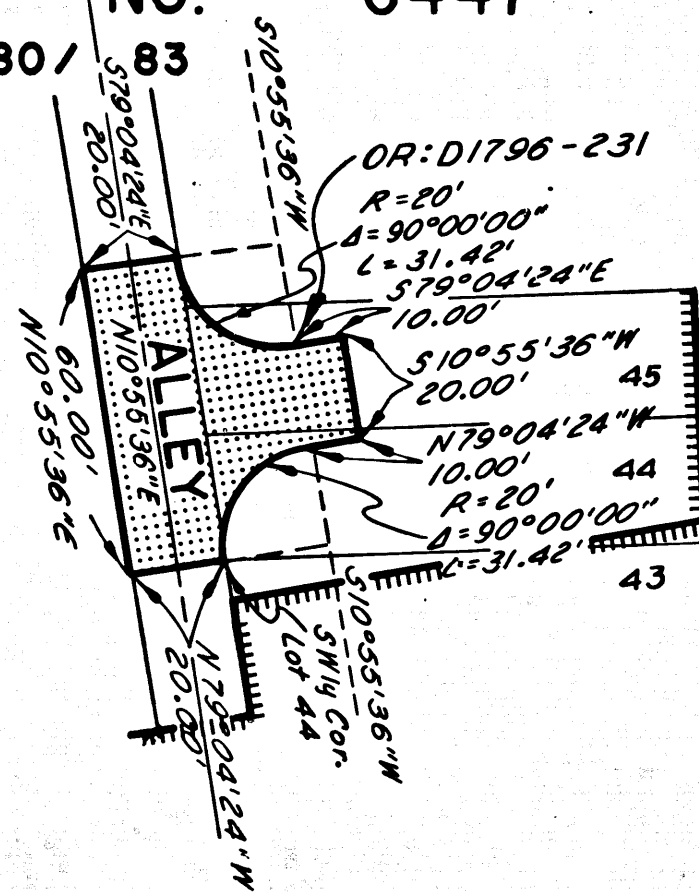


Detail Par. 1

Scale = 1"=50'

TRACT NO. 6447

M.B. 75-80/83

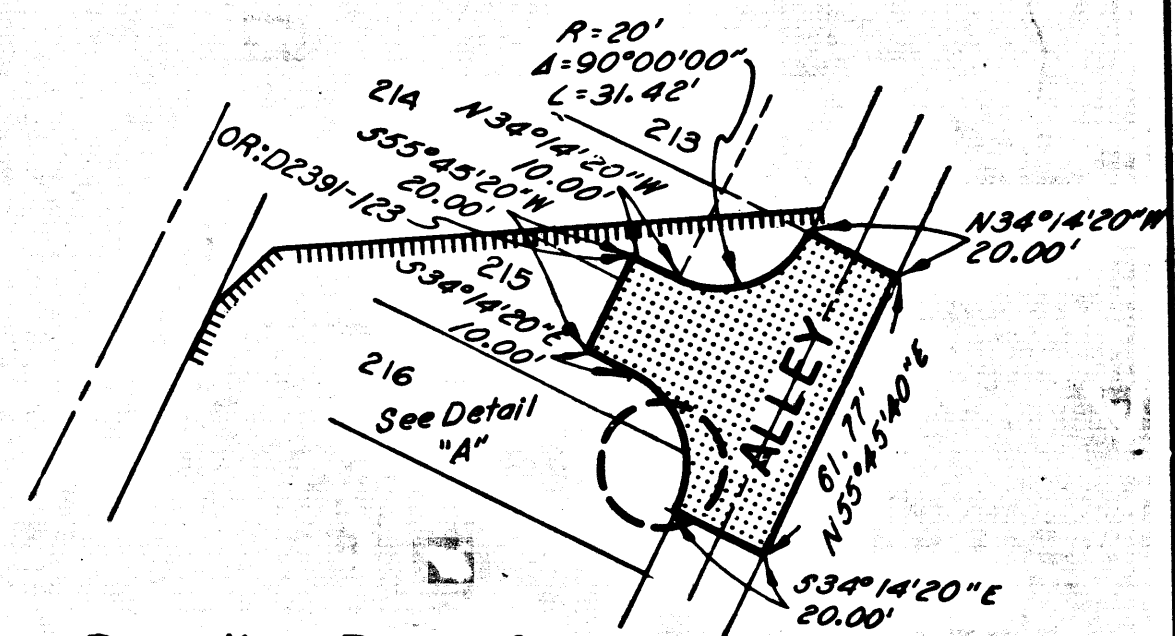


Detail Par. 3

Scale 1"=25'

TRACT NO. 6447

M.B. 75-80/83

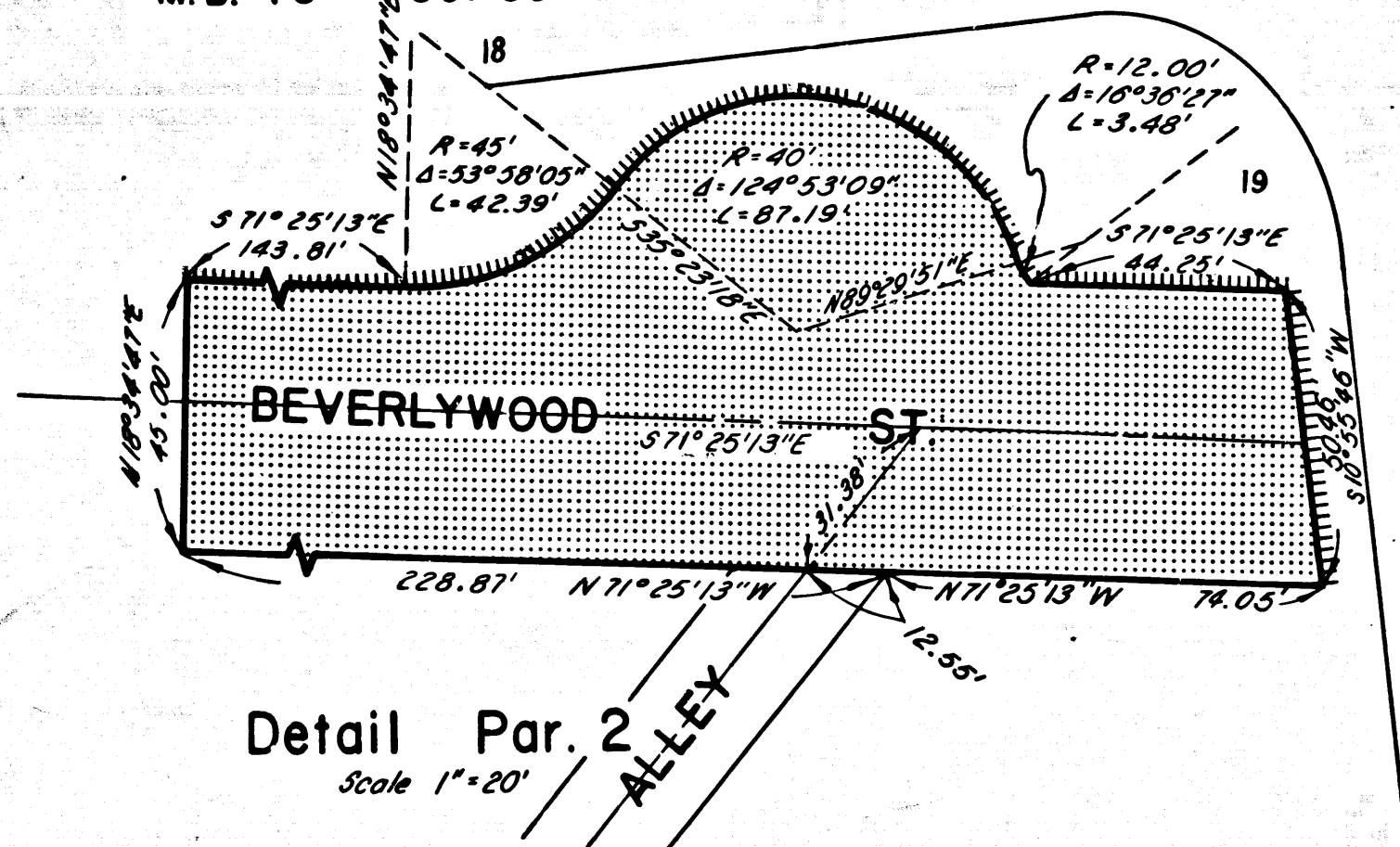


Detail Par. 4

Scale 1"=25'

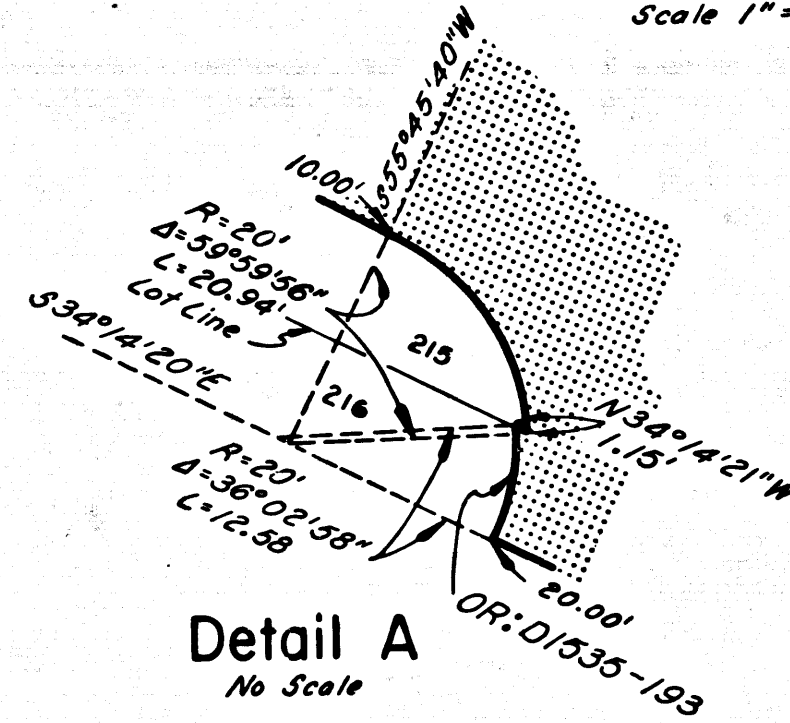
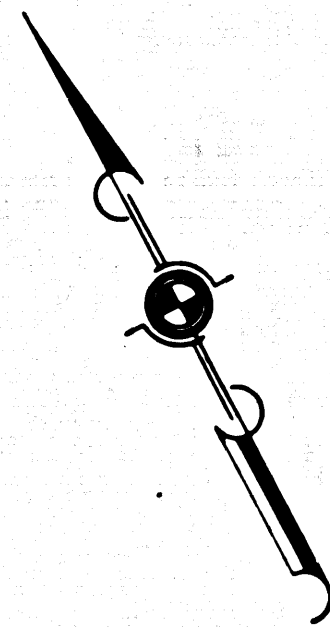
TRACT NO. 6447

M.B. 75-80/83



Detail Par. 2

Scale 1"=20'



Detail A

No Scale

INTERSTATE
STATE OF CALIFORNIA
TRANSPORTATION AGENCY
DEPARTMENT OF PUBLIC WORKS
DIVISION OF HIGHWAYS

PROPOSED RELINQUISHMENT

AREA TO BE RELINQUISHED SHOWN THUS

ACCESS PROHIBITED

DR'N BY M.A.C.	R/W MAP NO. F-2072
C'LC BY G.D.W.	REF. MAP NO. 148-A
C'K'D BY G.H.	REL- 737
REVISED S-10-69	